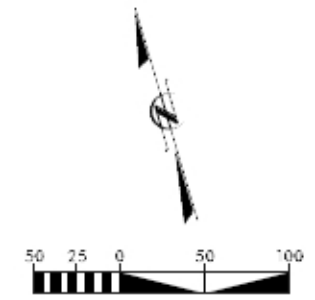
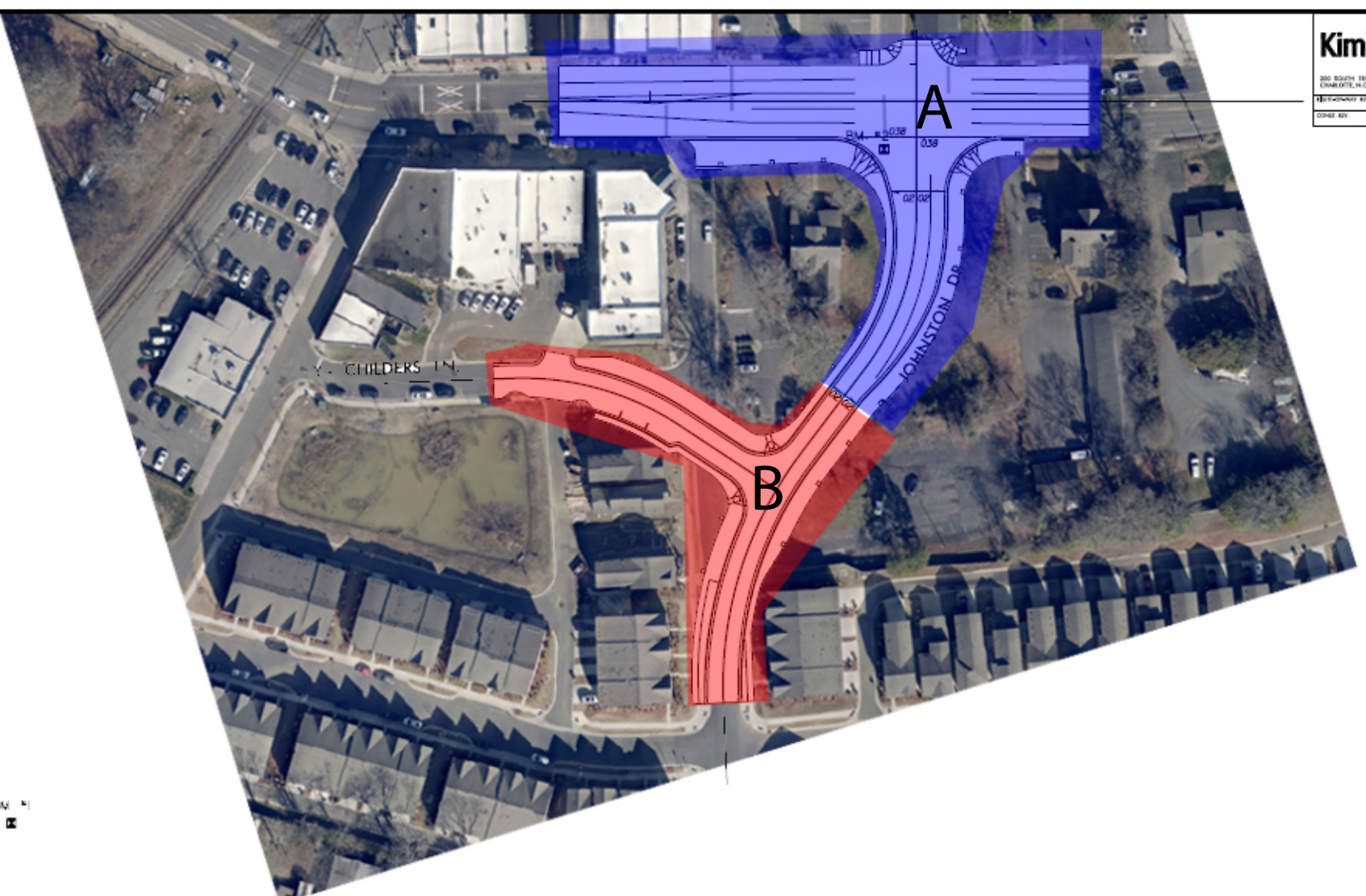


PROJECT REFERENCE NO. EB-5949	SHEET NO. 1-C
ROADWAY DESIGN ENGINEER	HYDRAULICS ENGINEER



BM #1
☒

BM #3
☒

BM #4
☒

.....
BM-1 ELEVATION = 587.88'
N 491281.9691 E 1433856.4285
.....

.....
BM-2 ELEVATION = 576.57'
N 491393.5412 E 1434655.4686
L STATION 15+33.37 8.87' LT.
.....

.....
BM-3 ELEVATION = 583.78'
N 490842.5561 E 1434372.5374
.....

.....
BM-4 ELEVATION = 591.05'
N 490845.2160 E 1435114.8423
.....



DATUM DESCRIPTION
THE LOCALIZED COORDINATE SYSTEM DEVELOPED FOR THIS PROJECT IS BASED ON THE STATE PLANE COORDINATES ESTABLISHED BY RD PHARR FOR NGS MONUMENT "M 091" WITH NAD 83/NSRS 2011 STATE PLANE GRID COORDINATES OF NORTHING: 486877.721(1) EASTING: 1432011.871(1) ELEVATION: 590.191(1)
THE COMPLETE COMBINED GRID FACTOR USED ON THIS PROJECT (GROUND TO GRID) IS: 0.99985372
ALL LINEAR DIMENSIONS ARE LOCALIZED HORIZONTAL DISTANCES
VERTICAL DATUM USED IS NAVD 88