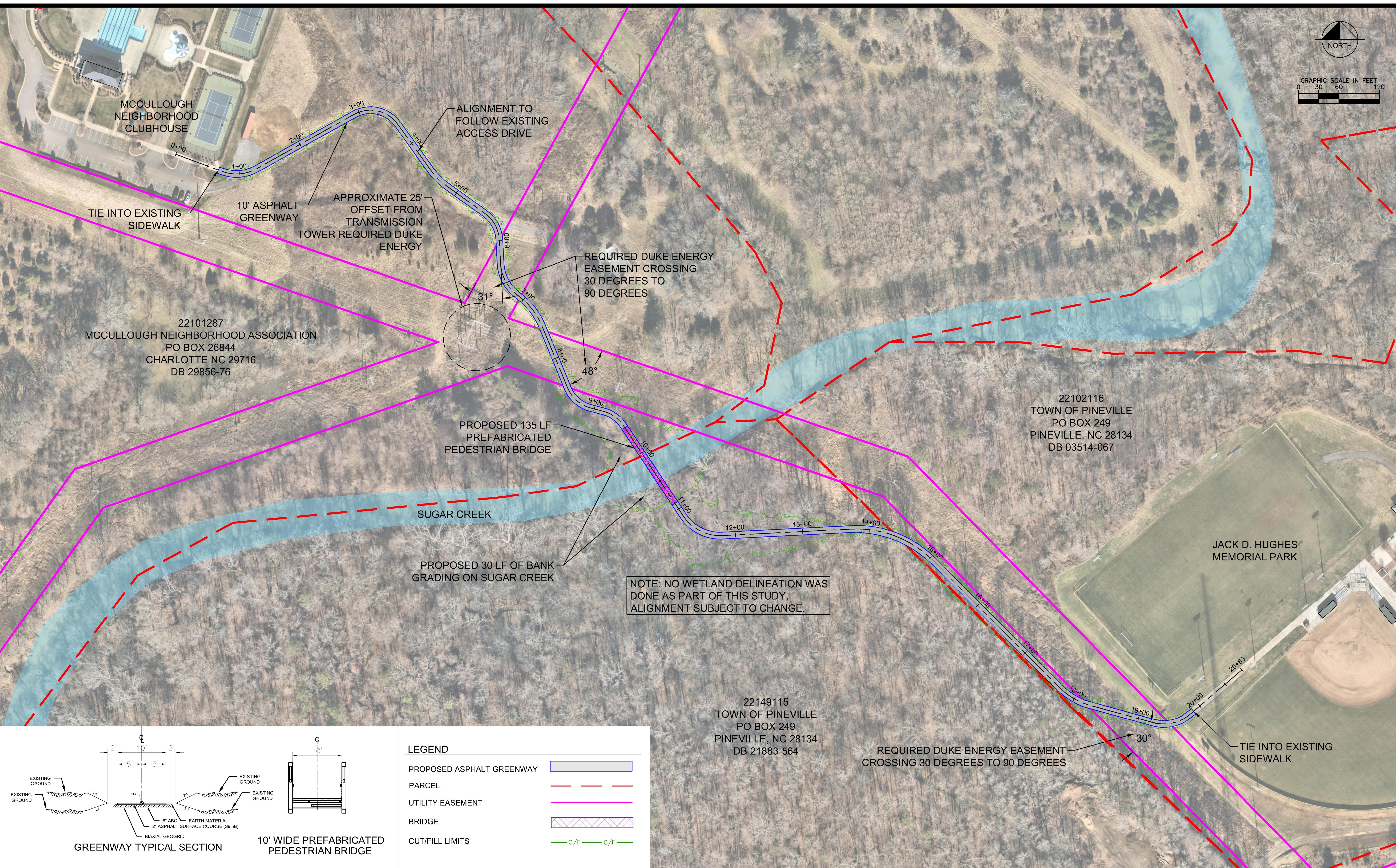


Drawing name: K:\CHL\_PRJ\018036 Town of Pineville\007 McCullough Greenway Feasibility\04\_CADD\Exhibits\McCullough Exhibit 2021-08-23.dwg Layout1 Aug 23, 2021 4:01pm by nancymancauso

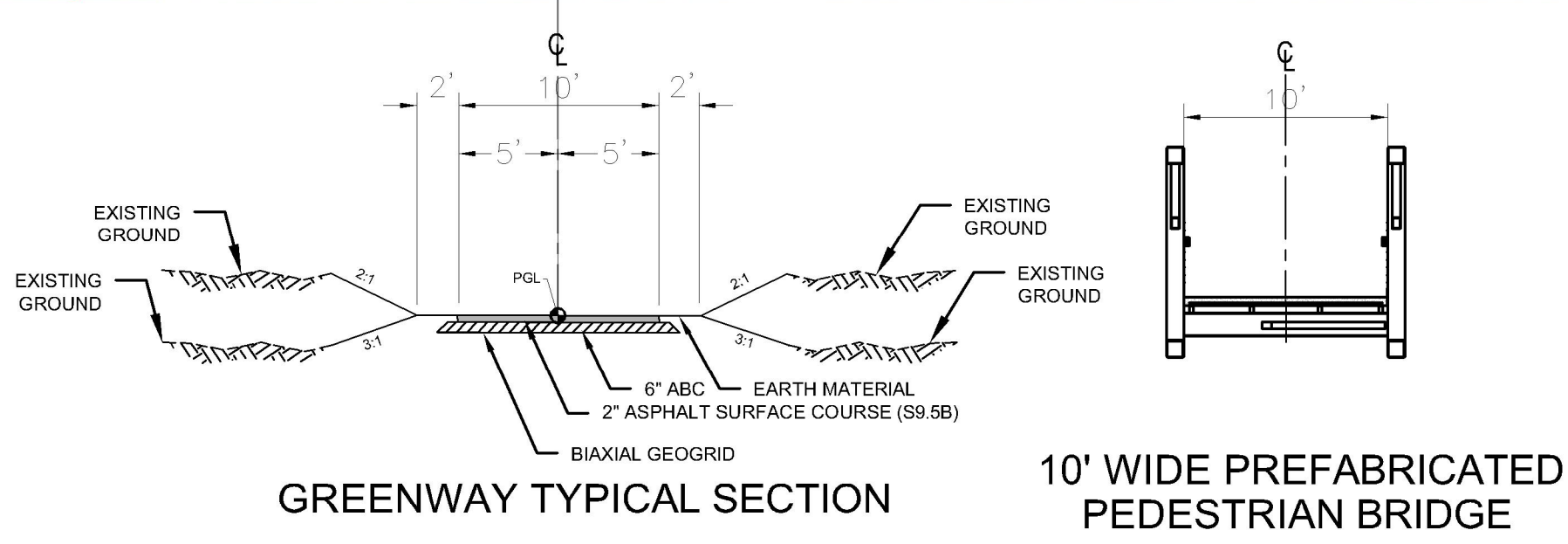


22101287  
MCCULLOUGH NEIGHBORHOOD ASSOCIATION  
PO BOX 26844  
CHARLOTTE NC 29716  
DB 29856-76

22102116  
TOWN OF PINEVILLE  
PO BOX 249  
PINEVILLE, NC 28134  
DB 03514-067

22149115  
TOWN OF PINEVILLE  
PO BOX 249  
PINEVILLE, NC 28134  
DB 21883-564

NOTE: NO WETLAND DELINEATION WAS DONE AS PART OF THIS STUDY, ALIGNMENT SUBJECT TO CHANGE.



LEGEND	
PROPOSED ASPHALT GREENWAY	
PARCEL	
UTILITY EASEMENT	
BRIDGE	
CUT/FILL LIMITS	

# MCCULLOUGH NEIGHBORHOOD GREENWAY CONNECTION FEASIBILITY STUDY

DATE: 08-23-2021

SHEET 1 of 1



THIS DOCUMENT, TOGETHER WITH THE CONCEPTS AND DESIGNS PRESENTED HEREIN, AS AN INSTRUMENT OF SERVICE, IS INTENDED ONLY FOR THE SPECIFIC PURPOSE AND CLIENT FOR WHICH IT WAS PREPARED. REUSE OF AND IMPROPER RELIANCE ON THIS DOCUMENT WITHOUT WRITTEN AUTHORIZATION AND ADAPTATION BY KIMLEY-HORN AND ASSOCIATES, INC. SHALL BE WITHOUT LIABILITY TO KIMLEY-HORN AND ASSOCIATES, INC.