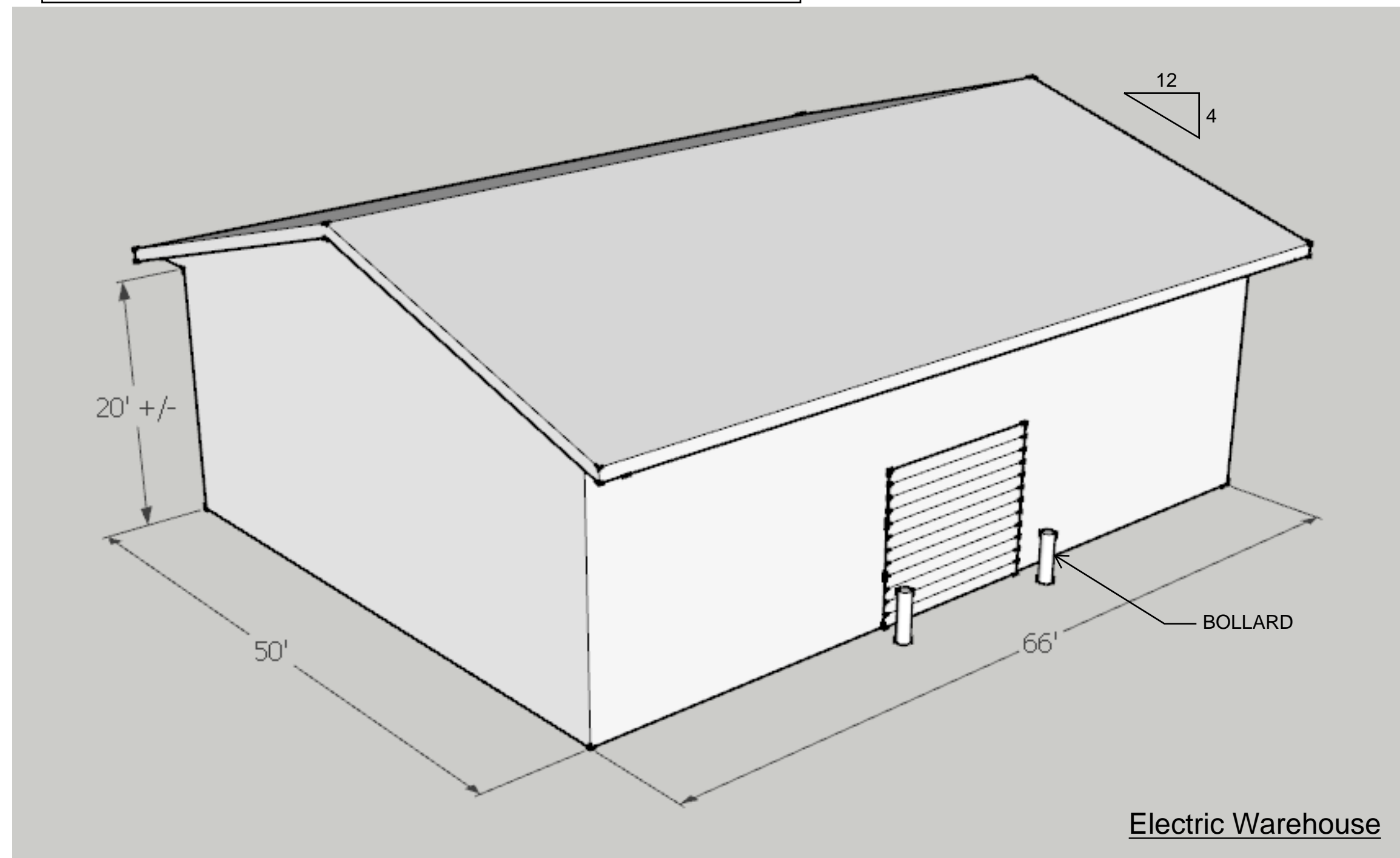


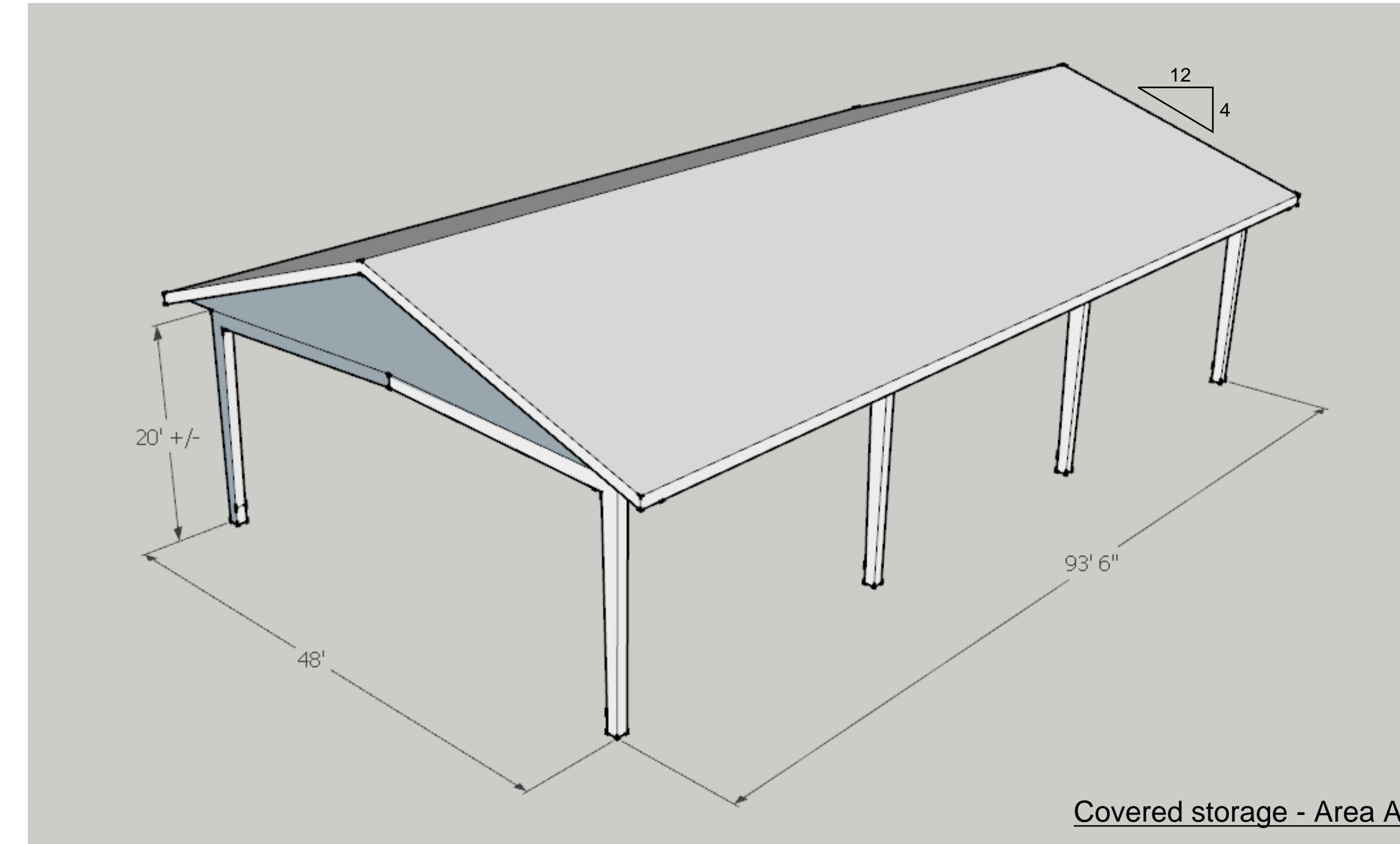
Electric Warehouse

- 66'0" L x 50'0" W x 20'0" H
- PEMB construction w/4' overhangs
- Standard PEMB standing seam metal roof
- Ice and snow guards
- No workstation, bathroom or office required in this building
- 18' minimum inside ceiling height with HVLS fan for ventilation
- Single 14' overhead door
- Lights & data
- Hose bibb outside
- No HVAC required in this building
- Enclosed building
- Include gutters and downspouts
- See program for additional information



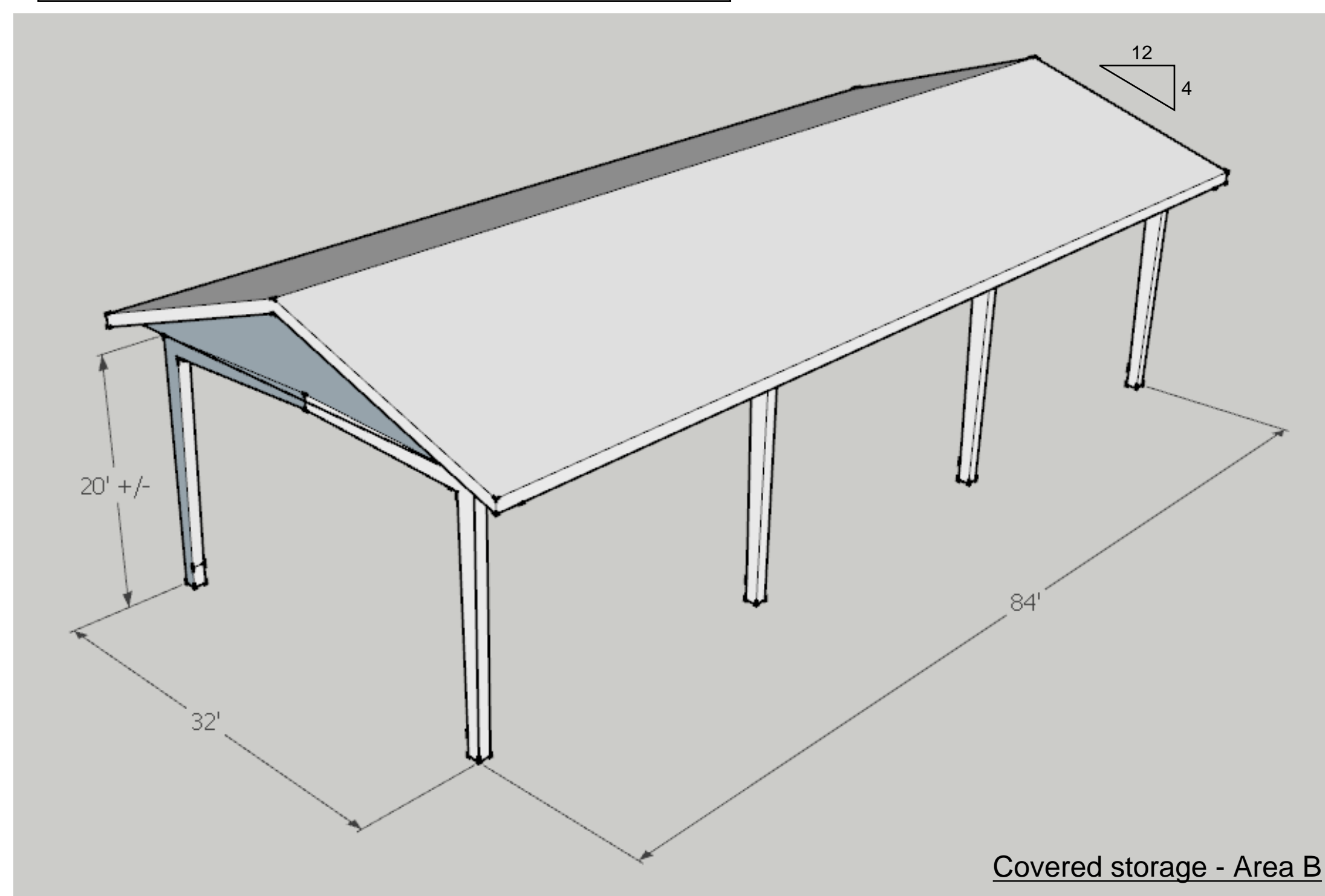
Covered storage - Area A

- 93'6" L x 48'0" W x 20'0" H
- PEMB construction w/4' overhangs
- Standard PEMB standing seam metal roof
- Ice and snow guards
- Provide lights, electrical, and water
- Open sided building
- Include gutters and downspouts
- See program for additional information



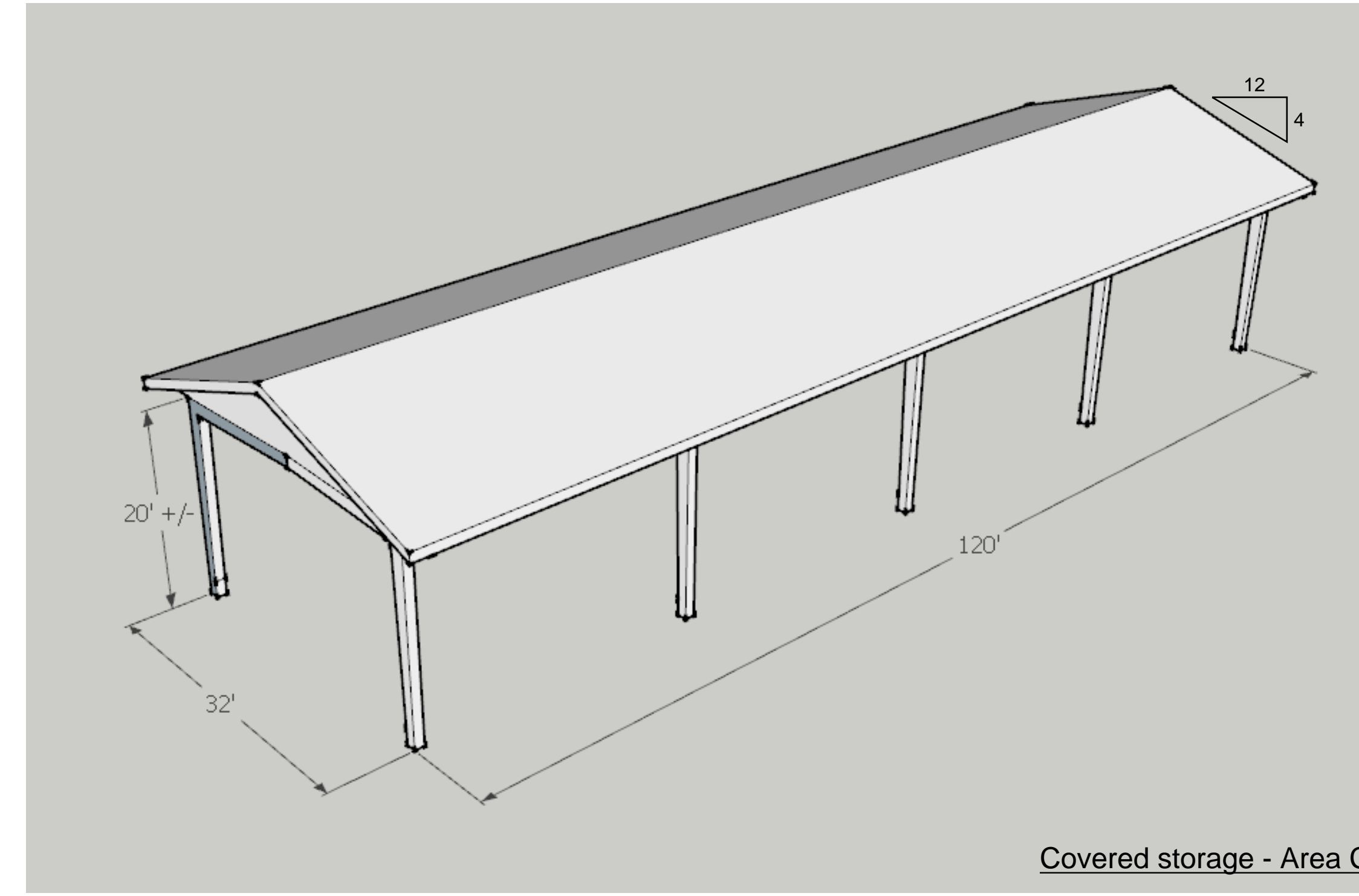
Covered storage - Area B

- 84'0" L x 32'0" W x 20'0" H
- PEMB construction w/4' overhangs
- Standard PEMB standing seam metal roof
- Ice and snow guards
- Provide lights and electrical
- Open sided building
- Include gutters and downspouts
- See program for additional information



Covered storage - Area C

- 120'0" L x 32'0" W x 20'0" H
- PEMB construction w/4' overhangs
- Standard PEMB standing seam metal roof
- Ice and snow guards
- Provide lights and electrical
- Open sided building
- Include gutters and downspouts
- See program for additional information



NOT FOR CONSTRUCTION

Project No.
1770

Date Printed:
04.10.2024
Drawn by:
SCNA
Checked by:

Revisions

© STEWART-COOPER-NEWELL ARCHITECTS, P.A.

THIS DRAWING IS THE PROPERTY OF STEWART-COOPER-NEWELL ARCHITECTS, P.A. AND IS SUBJECT TO FEDERAL COPYRIGHT LAWS. IT IS TO BE USED ONLY AS SHOWN AND NOT REPRODUCED, PUBLISHED OR USED IN ANY MANNER WITHOUT THE WRITTEN PERMISSION OF STEWART-COOPER-NEWELL ARCHITECTS, P.A.

719 East Second Avenue
Gastonia, NC 28054
Phone: 704.865.6311
Fax: 704.865.0046

Stewart · Cooper · Newell
Architects

SCNA

www.scn-architects.com

PINEVILLE OPERATIONS FACILITIES
COMMUNICATIONS and ELECTRICAL
PINEVILLE, NC

Sheet No.