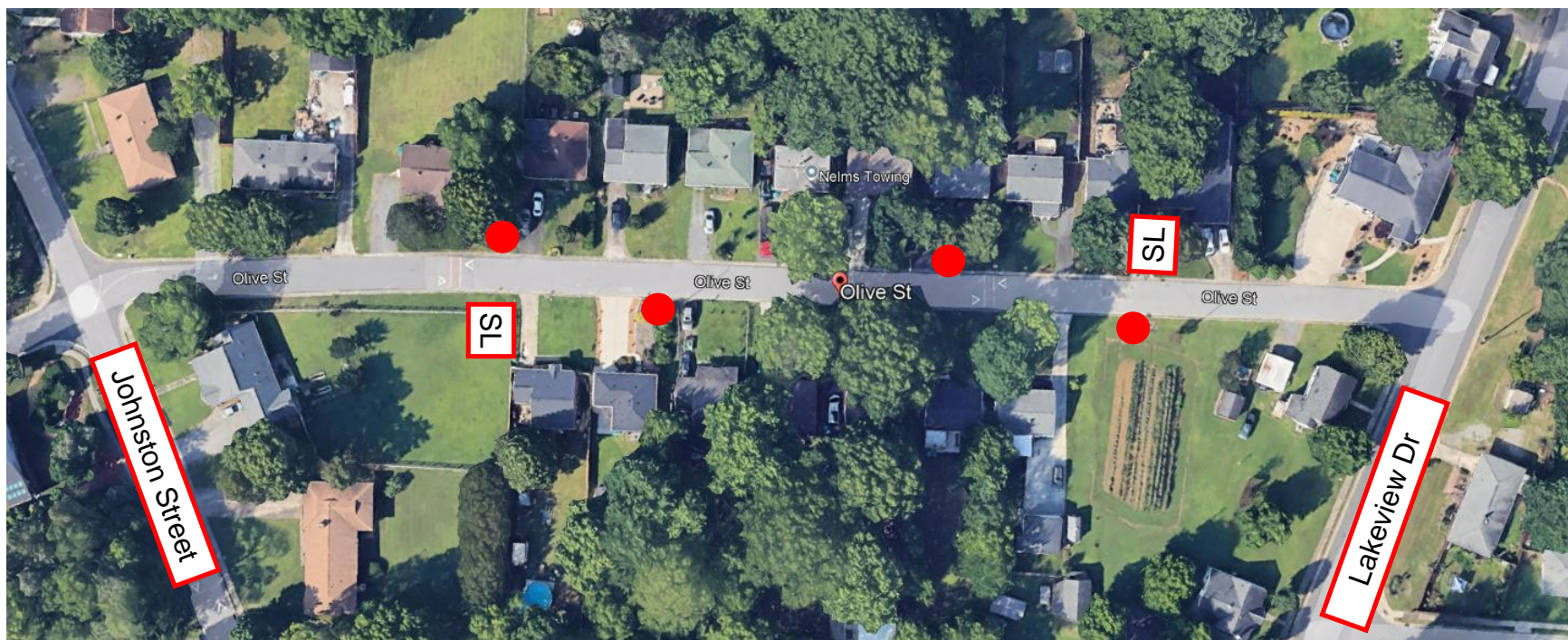


Olive Street and potential No Parking sign locations



Recommend place of R7-1 onto existing speed limit signs and on existing street light poles.

Approximate location of Light Poles-



Approximate location of speed limit sign



R7-1



Add No-Parking sign  
to SL sign.



Add No-Parking sign  
to existing Light  
Poles.

There are four light  
poles that could be  
used to add the No  
Parking sign on to  
minimize intrusive  
sign posts into  
yards.





Add No Parking sign  
to SL sign.

Move sign out of  
tree limbs or trim  
back with PO  
permission.