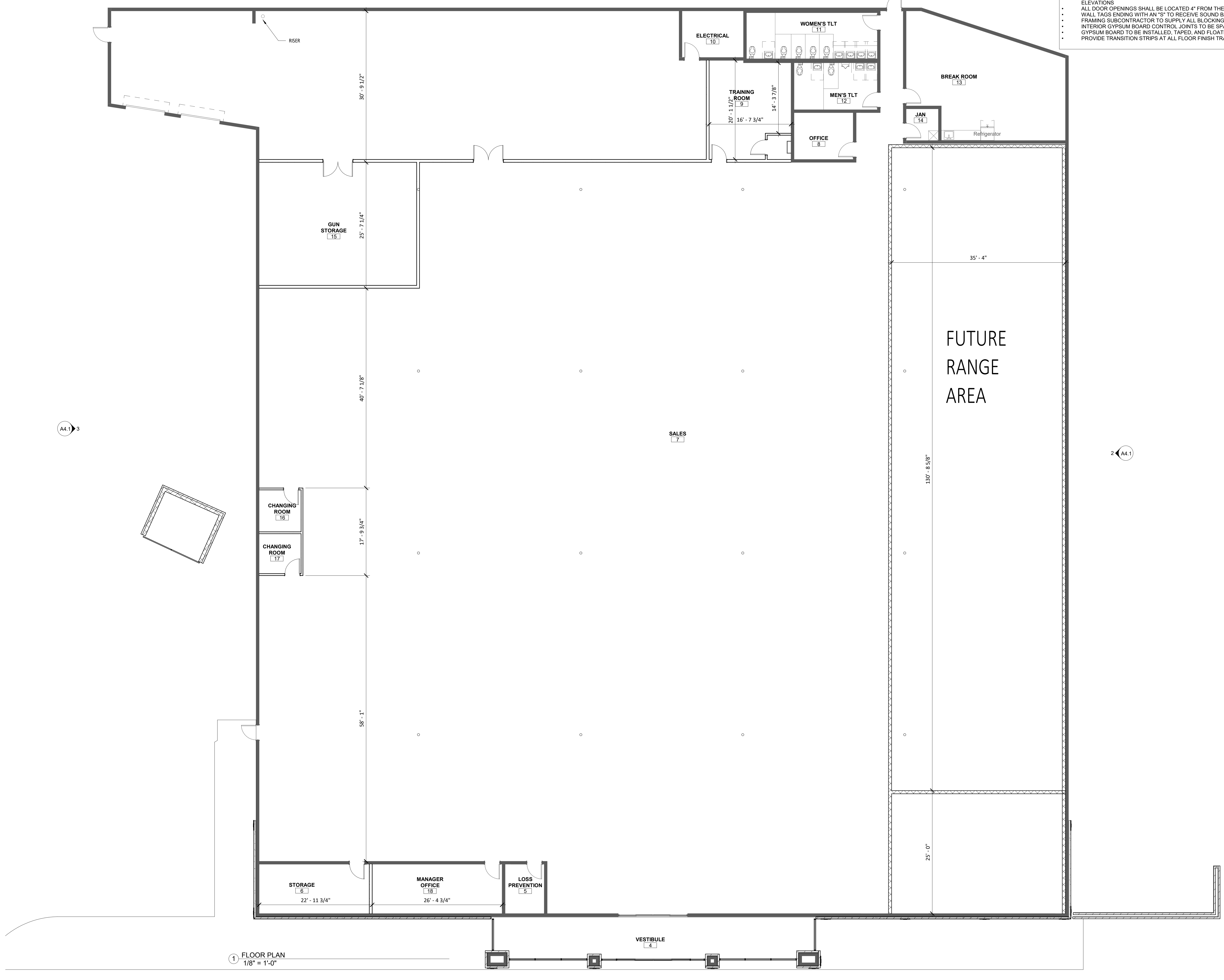


- GENERAL FLOOR PLAN NOTES**
- ALL EXTERIOR DIMENSIONS ARE TO FACE OF STUD/CMU UNLESS OTHERWISE NOTED.
 - ALL INTERIOR DIMENSIONS ARE TO FACE OF STRUCTURE UNLESS OTHERWISE NOTED.
 - ALL SUBCONTRACTORS MUST COORDINATE THE DESIGN AND INSTALLATION OF THEIR SYSTEMS WITH THE ARCHITECTURAL DRAWINGS.
 - VERIFY THAT ADA/ANSI REQUIREMENTS ARE SATISFIED PRIOR TO CONSTRUCTION OF NEW WALLS.
 - COORDINATE ALL BUILDING UTILITIES AND SYSTEMS WITH FLOOR PLANS AND REFLECTED CEILING PLANS.
 - FOUNDATIONS AND FOOTINGS FOR ALL NEW COLUMNS, PIERS AND WALLS SHALL BE IN ACCORDANCE WITH STRUCTURAL ENGINEERING AND ARCHITECTURAL DRAWINGS. ALL FINAL GRADES TO BE VERIFIED WITH ENGINEER. ALL FINAL GRADES OR PAVEMENTS ABUTTING THE BUILDING SHALL BE COORDINATED WITH CIVIL DOCUMENTS, LANDSCAPE DOCUMENTS AND STRUCTURAL DOCUMENTS. (SOIL REPORTS TO BE PROVIDED BY THE OWNER.)
 - FINISH FLOOR ELEVATIONS ARE RELATIVE AND DO NOT REFLECT ACTUAL CIVIL SITE ELEVATIONS. REFER TO CIVIL DRAWINGS FOR ACTUAL FINISH FLOOR ELEVATIONS.
 - ALL DOOR OPENINGS SHALL BE LOCATED 4" FROM THE FINISHED FACE OF WALL TO INSIDE FACE OF FRAME, UNLESS NOTED OR DETAILED OTHERWISE.
 - WALL TAGS ENDING WITH AN "S" TO RECEIVE SOUND BATTING IN WALLS.
 - FRAMING SUBCONTRACTOR TO SUPPLY ALL BLOCKING BEHIND CABINETS AND BATHROOM ACCESSORIES, AND ROOF ACCESS LADDERS.
 - INTERIOR GYPSUM BOARD CONTROL JOINTS TO BE SPACED AS SPECIFIED. COORDINATE LOCATIONS WITH ARCHITECT BEFORE PROCEEDING.
 - GYPSUM BOARD TO BE INSTALLED, TAPED, AND FLOATED BEHIND ALL CABINETS.
 - PROVIDE TRANSITION STRIPS AT ALL FLOOR FINISH TRANSITIONS WHETHER INDICATED OR NOT.



1 FLOOR PLAN
1/8" = 1'-0"

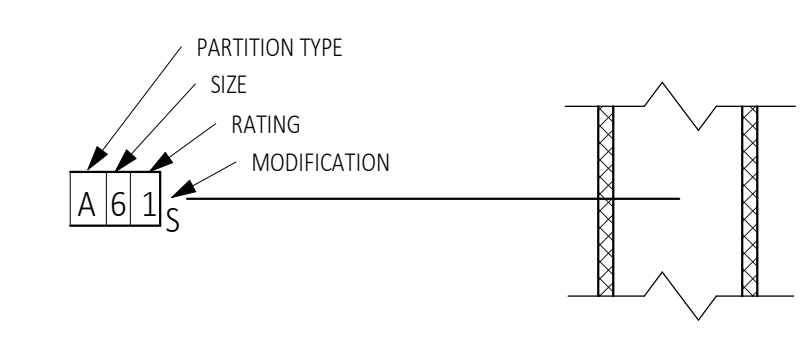
WALL TYPE LEGEND

- 1-HOUR FIRE RATED
- 2-HOUR FIRE RATED
- 2-HOUR CMU
- EXISTING WALL

GENERAL WALL NOTES

- INSTALL BOX HEADERS AT INTERIOR STUD WALL OPENINGS 44" OR GREATER. MATCH STUD GAGE OF WALL.
44" - 60" 6" HEADER
60" - 84" 8" HEADER

SEE T1.2 FOR PARTITION TYPES



MODIFICATIONS

- A 6" ABOVE CEILING FOR STUD WALL - BRACE TO STRUCTURE ABOVE
- B STUD TO DECK - STOP GYPSUM AT 6" ABOVE CEILING
- C STUD TO ROOF STRUCTURE - GYPSUM BOARD RUN FULL HEIGHT CORRIDORSIDE OF WALL, STOP 6" ABOVE CEILING OPPOSITE SIDE
- D STUD TO ROOF STRUCTURE - GYPSUM BOARD RUN FULL HEIGHT
- M MOISTURE RESISTANT GYP. BD TO 4'-0" A.F.F.
- S SOUND ATTENUATION FULL HEIGHT OF WALL
- XX PARTIAL HEIGHT WALL