



**SUBARU
SOUTH
CHARLOTTE**

10400 CADILLAC ST
PINEVILLE, NC 28134

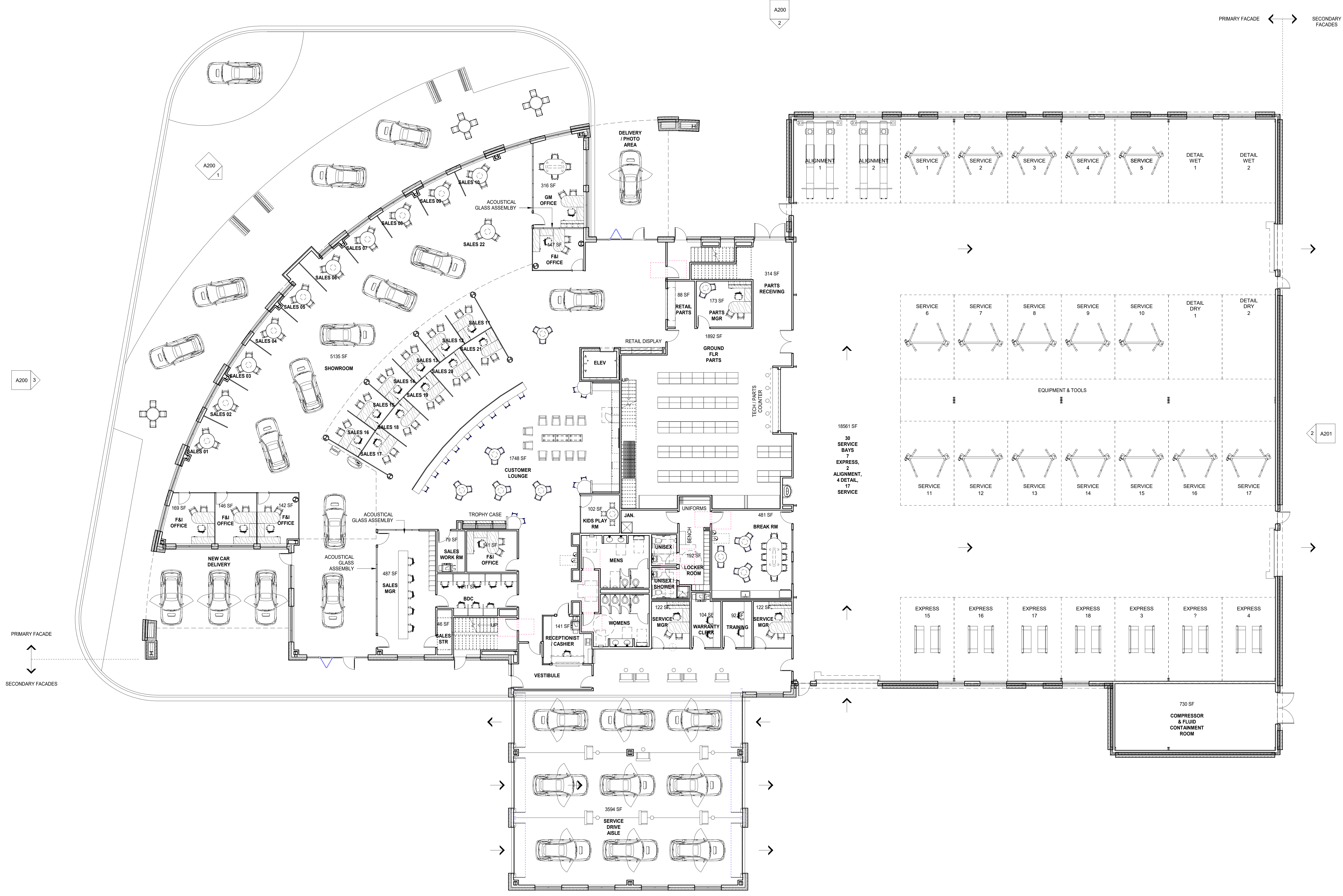
KEY PLAN

Revisions		
#	Date	Description

Project Number: 20116
Issued for: PRELIMINARY V4
Issue Date: 2021-01-27

DRAWING TITLE
1ST FLOOR PLAN

SHEET NUMBER
A101



1 OVERALL 1ST FLOOR PLAN
SCALE: 1" = 10'-0"



1 SOUTHWEST (FACING CADILLAC ST)

SCALE: 1" = 10'-0"



2 WEST (FACING CADILLAC ST & CARMAX)

SCALE: 1" = 10'-0"

PRIMARY FACADE MATERIAL PERCENTAGES		
MATERIAL	AREA	PERCENTAGE
BRICK	7,225 SF	56 %
SLATE	411 SF	3 %
METAL PANEL	2,944 SF	23 %
GLASS / FRAMES	2,346 SF	18 %
TOTAL	12,926 SF	100 %

PRIMARY FACADE ← → SECONDARY FACADES



3 SOUTH (FACING CADILLAC ST & GOLF RANGE)

SCALE: 1" = 10'-0"

EXTERIOR MATERIALS		
TAG	POCHE SYMBOL	BASIS-OF-DESIGN DESCRIPTION
BR1	[Symbol]	BRICK: 3-5/8" x 2-1/4" x 7-5/8" MODULAR WIRECUT PATTERN: RUNNING BOND COLOR: TAYLOR BRICK BLEND #306 PINK (50%), #309 PINK (35%), AND COPPERTONE (15%) MORTAR COLOR: HOLCIM MORTAMIX "FROSTY" SEALANT COLOR: BASF NP1NP2 "STONE"
BR15	[Symbol]	BRICK: 3-5/8" x 2-1/4" x 7-5/8" MODULAR WIRECUT PATTERN: SOLDIER COURSE COLOR: TAYLOR BRICK BLEND #306 PINK (50%), #309 PINK (35%), AND COPPERTONE (15%) MORTAR COLOR: HOLCIM MORTAMIX "FROSTY" SEALANT COLOR: BASF NP1NP2 "STONE"
BR25	[Symbol]	BRICK: 3-5/8" x 2-1/4" x 7-5/8" MODULAR WIRECUT PATTERN: SOLDIER/ROWLOCK/HEADER COURSE (SEE DETAILS) COLOR: TAYLOR BRICK #375 CHOCOLATE MORTAR COLOR: HOLCIM MORTAMIX "SANDSTONE" SEALANT COLOR: BASF NP1NP2 "REDWOOD TAN"
BR2U	[Symbol]	BRICK: 3-5/8" x 3-5/8" x 11-5/8" NOM. UTILITY WIRECUT PATTERN: RUNNING BOND COLOR: TAYLOR BRICK #375 CHOCOLATE MORTAR COLOR: HOLCIM MORTAMIX "SANDSTONE" SEALANT COLOR: BASF NP1NP2 "REDWOOD TAN"
BR3	[Symbol]	BRICK: 3-5/8" x 2-1/4" x 7-5/8" MODULAR WIRECUT PATTERN: RUNNING BOND COLOR: TAYLOR BRICK #323 GRAY MORTAR COLOR: HOLCIM MORTAMIX "FROSTY" SEALANT COLOR: BASF NP1NP2 "STONE"
BR2S	[Symbol]	BRICK: 3-5/8" x 2-1/4" x 7-5/8" MODULAR WIRECUT PATTERN: SOLDIER/ROWLOCK/HEADER COURSE (SEE DETAILS) COLOR: TAYLOR BRICK #323 GRAY MORTAR COLOR: HOLCIM MORTAMIX "FROSTY" SEALANT COLOR: BASF NP1NP2 "STONE"
BR4	[Symbol]	BRICK: 3-5/8" x 2-1/4" x 7-5/8" MODULAR WIRECUT PATTERN: RUNNING BOND COLOR: TAYLOR BRICK #519 GRAY MORTAR COLOR: HOLCIM MORTAMIX "FROSTY" SEALANT COLOR: BASF NP1NP2 "STONE"
MTL1	[Symbol]	KAWNEER MEDIUM-STILE ALUMINUM STOREFRONT WITH "40 DARK BRONZE" FINISH PER A4-810C21A44
MTL2	[Symbol]	EXPOSED METAL / STEEL PRIMER SHERWIN WILLIAMS KEM KROMIK UNIVERSAL METAL PRIMER B50WZ1 WITH 2 COATS SHERWIN WILLIAMS PRO INDUSTRIAL WATERBASED ALKYD URETHANE SEMI-GLOSS 553-1150, COLOR: "SW6991 BLACK MAGIC"
MTL3	[Symbol]	ACM METAL PANEL "SILVER" (NON-REFLECTIVE)
MTL4	[Symbol]	ACM METAL PANEL "AWARD BLUE"
SLT1	[Symbol]	THIN VENEER SLATE



**SUBARU
SOUTH
CHARLOTTE**

10400 CADILLAC ST
PINEVILLE, NC 28134

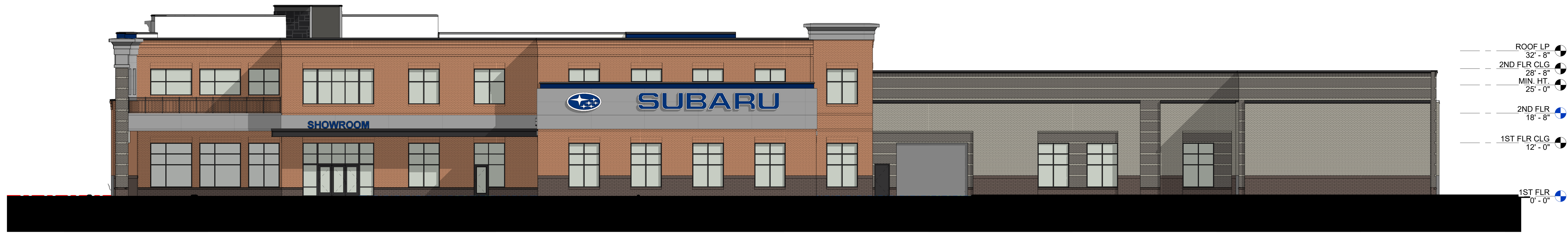
KEY PLAN

Revisions		
#	Date	Description

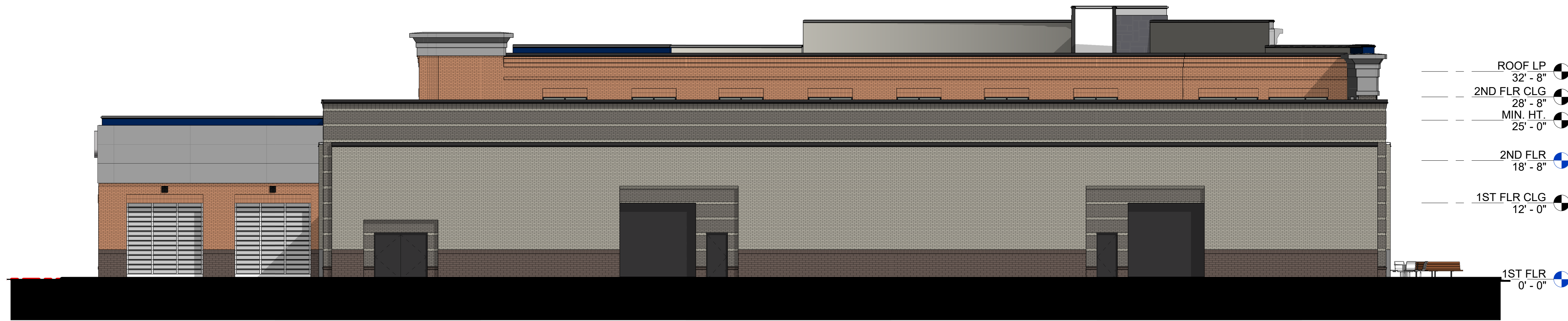
Project Number: 20116
Issued for: PRELIMINARY V4
Issue Date: 2021-01-27

DRAWING TITLE
**PRIMARY STREET
FACING
ELEVATIONS**

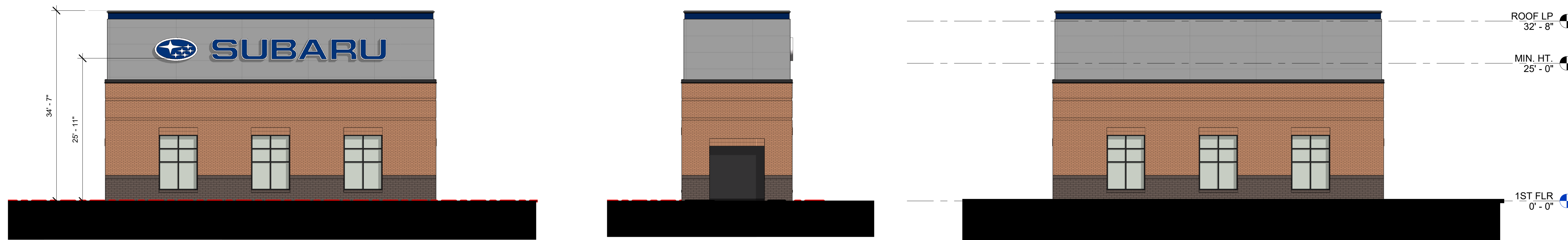
SHEET NUMBER
A200



1 EAST (FACING PARKING LOT & I-485)
SCALE: 1" = 10'-0"



2 NORTH (FACING I-485)
SCALE: 1" = 10'-0"



3 CAR WASH (FACING I-485)
SCALE: 1" = 10'-0"

4 CAR WASH (ENTER / EXIT)
SCALE: 1" = 10'-0"

5 CAR WASH (FACING PARKING LOT)
SCALE: 1" = 10'-0"

EXTERIOR MATERIALS		
TAG	POC/SYMBOL	BASIS-OF-DESIGN DESCRIPTION
BR1		BRICK: 3-5/8" x 2-1/4" x 7-5/8" MODULAR WIRECUT PATTERN: RUNNING BOND COLOR: TAYLOR BRICK BLEND #306 PINK (50%), #309 PINK (35%), AND COPPERTONE (15%) MORTAR COLOR: HOLCIM MORTAMIX "FROSTY" SEALANT COLOR: BASF NP11NP2 "STONE"
BR1S		BRICK: 3-5/8" x 2-1/4" x 7-5/8" MODULAR WIRECUT PATTERN: SOLDIER COURSE COLOR: TAYLOR BRICK BLEND #306 PINK (50%), #309 PINK (35%), AND COPPERTONE (15%) MORTAR COLOR: HOLCIM MORTAMIX "FROSTY" SEALANT COLOR: BASF NP11NP2 "STONE"
BR2S		BRICK: 3-5/8" x 2-1/4" x 7-5/8" MODULAR WIRECUT PATTERN: SOLDIERROWLOCK/HEADER COURSE (SEE DETAILS) COLOR: TAYLOR BRICK #675 CHOCOLATE MORTAR COLOR: HOLCIM MORTAMIX "SANDSTONE" SEALANT COLOR: BASF NP11NP2 "REDWOOD TAN"
BR2U		BRICK: 3-5/8" x 2-1/4" x 7-5/8" MODULAR WIRECUT PATTERN: RUNNING BOND COLOR: TAYLOR BRICK #675 CHOCOLATE MORTAR COLOR: HOLCIM MORTAMIX "SANDSTONE" SEALANT COLOR: BASF NP11NP2 "REDWOOD TAN"
BR3		BRICK: 3-5/8" x 2-1/4" x 7-5/8" MODULAR WIRECUT PATTERN: RUNNING BOND COLOR: TAYLOR BRICK #323 GRAY MORTAR COLOR: HOLCIM MORTAMIX "FROSTY" SEALANT COLOR: BASF NP11NP2 "STONE"
BR2S		BRICK: 3-5/8" x 2-1/4" x 7-5/8" MODULAR WIRECUT PATTERN: SOLDIERROWLOCK/HEADER COURSE (SEE DETAILS) COLOR: TAYLOR BRICK #323 GRAY MORTAR COLOR: HOLCIM MORTAMIX "FROSTY" SEALANT COLOR: BASF NP11NP2 "STONE"
BR4		BRICK: 3-5/8" x 2-1/4" x 7-5/8" MODULAR WIRECUT PATTERN: RUNNING BOND COLOR: TAYLOR BRICK #619 GRAY MORTAR COLOR: HOLCIM MORTAMIX "FROSTY" SEALANT COLOR: BASF NP11NP2 "STONE"
MTL1		KAWNEER MEDIUM-STYLE ALUMINUM STOREFRONT WITH #40 DARK BRONZE FINISH PER AA-M10C21444 EXPOSED METAL / STEEL: PRIMER SHERWIN WILLIAMS KEM KROMIK UNIVERSAL METAL PRIMER B50WZ1 WITH 2 COATS SHERWIN WILLIAMS PRO INDUSTRIAL WATERBASED ALKYO URETHANE SEMI-GLOSS B53-1150, COLOR "SW6991 BLACK MAGIC"
MTL2		ACM METAL PANEL "SILVER" (NON-REFLECTIVE)
MTL3		ACM METAL PANEL "AWARD BLUE"
SLT1		THIN VENEER SLATE



SUBARU
SOUTH
CHARLOTTE

10400 CADILLAC ST
PINEVILLE, NC 28134

KEY PLAN

Revisions		
#	Date	Description

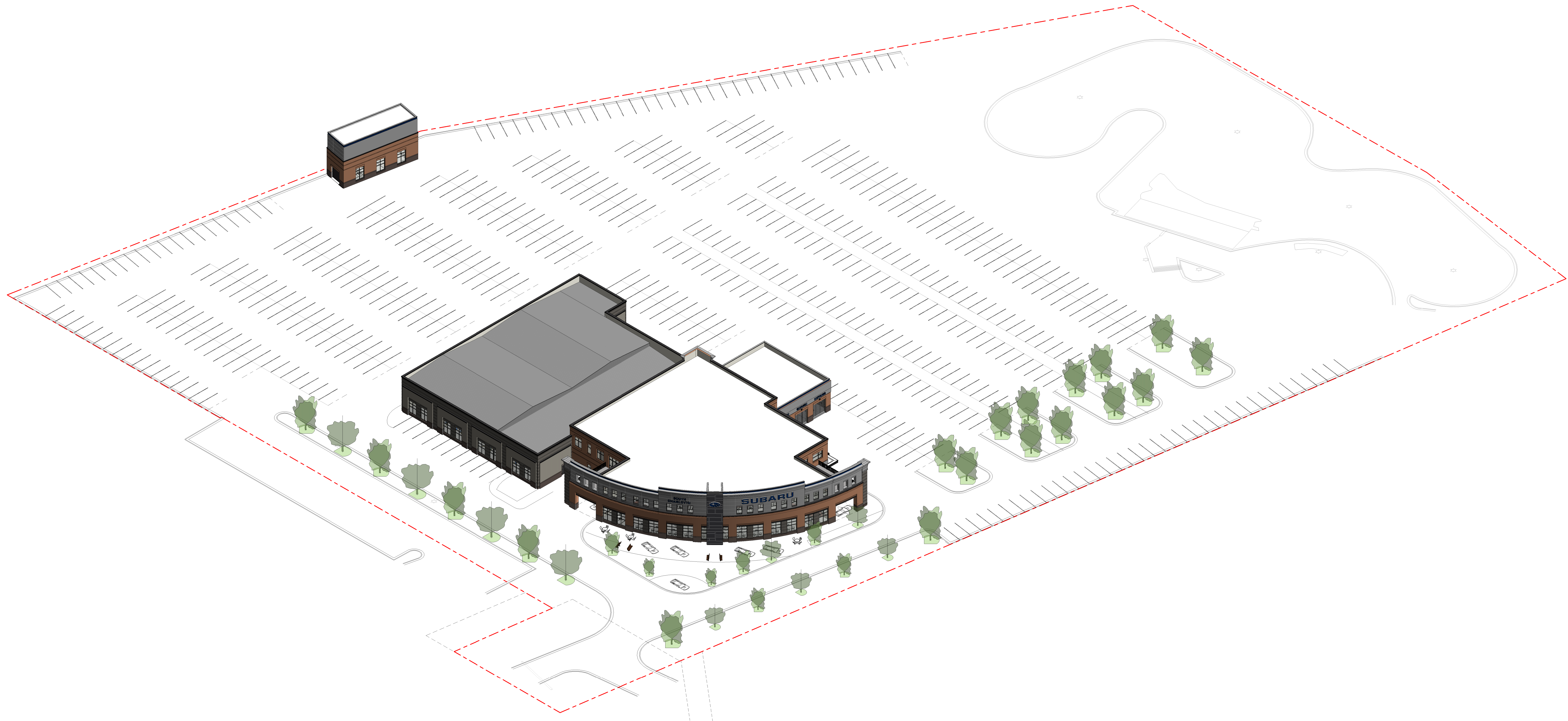
Project Number: 2016
Issued for: PRELIMINARY V4
Issue Date: 2021-01-27

DRAWING TITLE
SECONDARY ELEVATIONS

SHEET NUMBER
A201



2 3D PERSPECTIVE (LOOKING DOWN CADILLAC ST)
SCALE:



1 3D AXON (CADILLAC ST SIDE)
SCALE:



**SUBARU
SOUTH
CHARLOTTE**

10400 CADILLAC ST
PINEVILLE, NC 28134

KEY PLAN

Revisions		
#	Date	Description

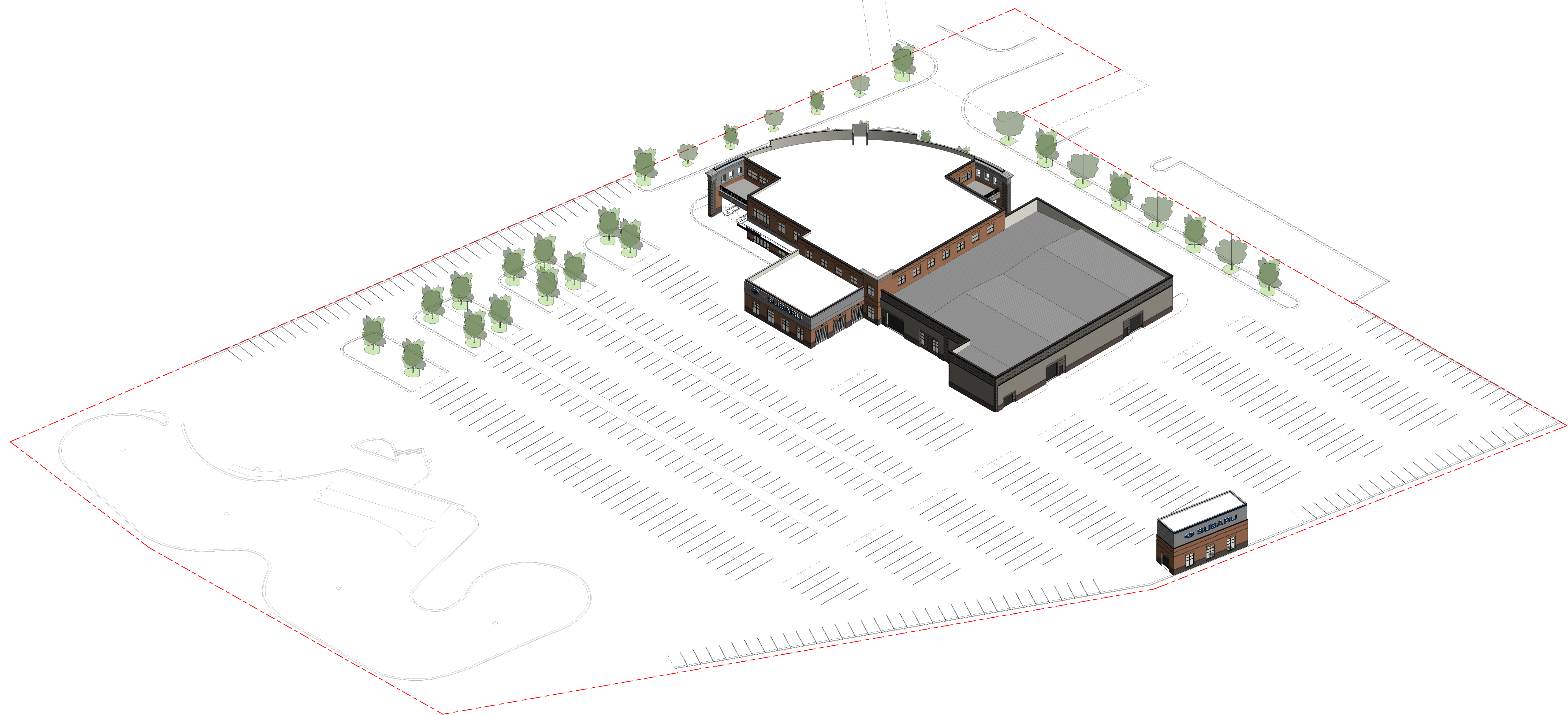
Project Number: 20116
Issued for: PRELIMINARY V4
Issue Date: 2021-01-27

DRAWING TITLE
**3D AXON &
PERSPECTIVE
FROM CADILLAC
ST SIDE**

SHEET NUMBER
A300



2 3D PERSPECTIVE (LOOKING FROM PARKING LOT SIDE)
SCALE:



1 3D AXON (I-485 SIDE)
SCALE:



**SUBARU
SOUTH
CHARLOTTE**

10400 CADILLAC ST
PINEVILLE, NC 28134

KEY PLAN

Revisions		
#	Date	Description

Project Number: 20116
Issued for: PRELIMINARY V4
Issue Date: 2021-01-27

DRAWING TITLE
**3D AXON &
PERSPECTIVE
VIEWS FROM
PARKING LOT**

SHEET NUMBER
A301