

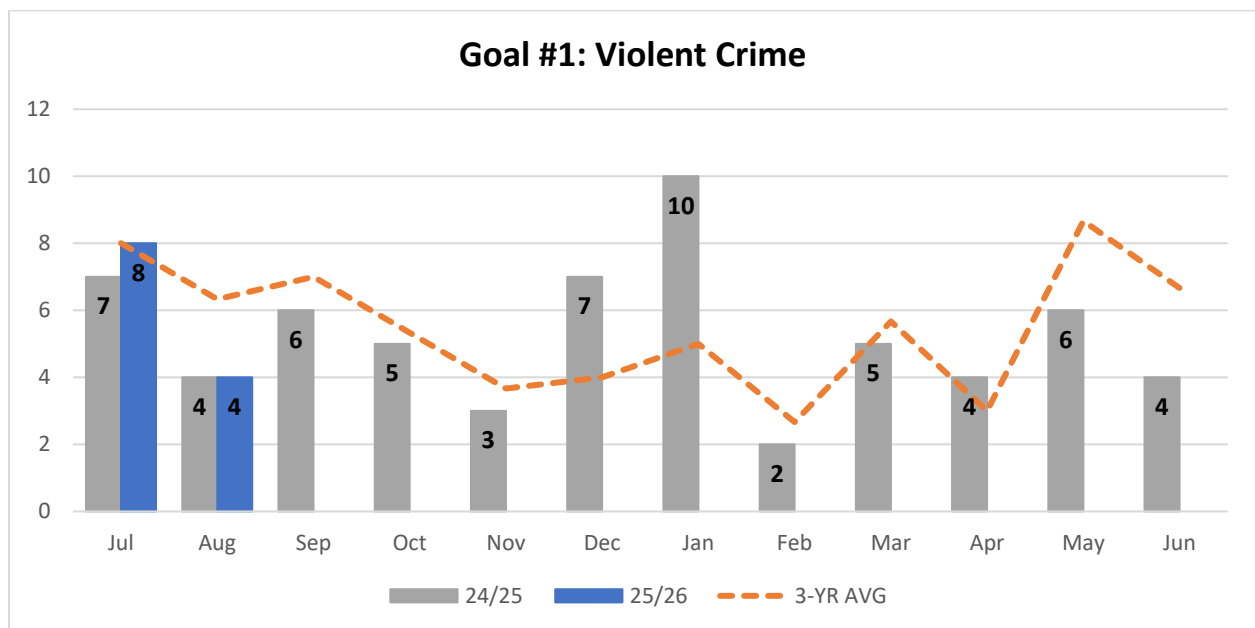


PINEVILLE POLICE DEPARTMENT

MONTHLY REPORT

August 2025

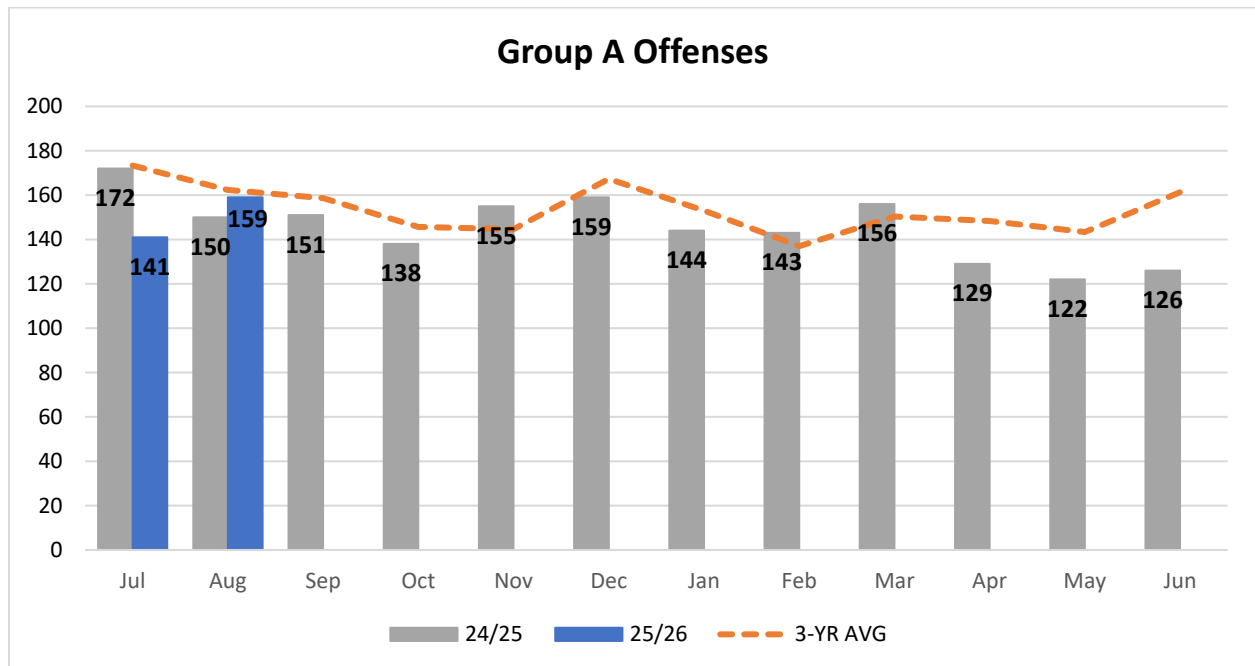
Violent Crime



Comparison to Jul 24 to Aug 24: **+1**

Comparison to Jul to Aug 3-Year Average: **-14%**

Group A Crime (All Crime)



* data is subject to change; unfounded removed

Comparison to Jul 24 to Aug 24: -7%

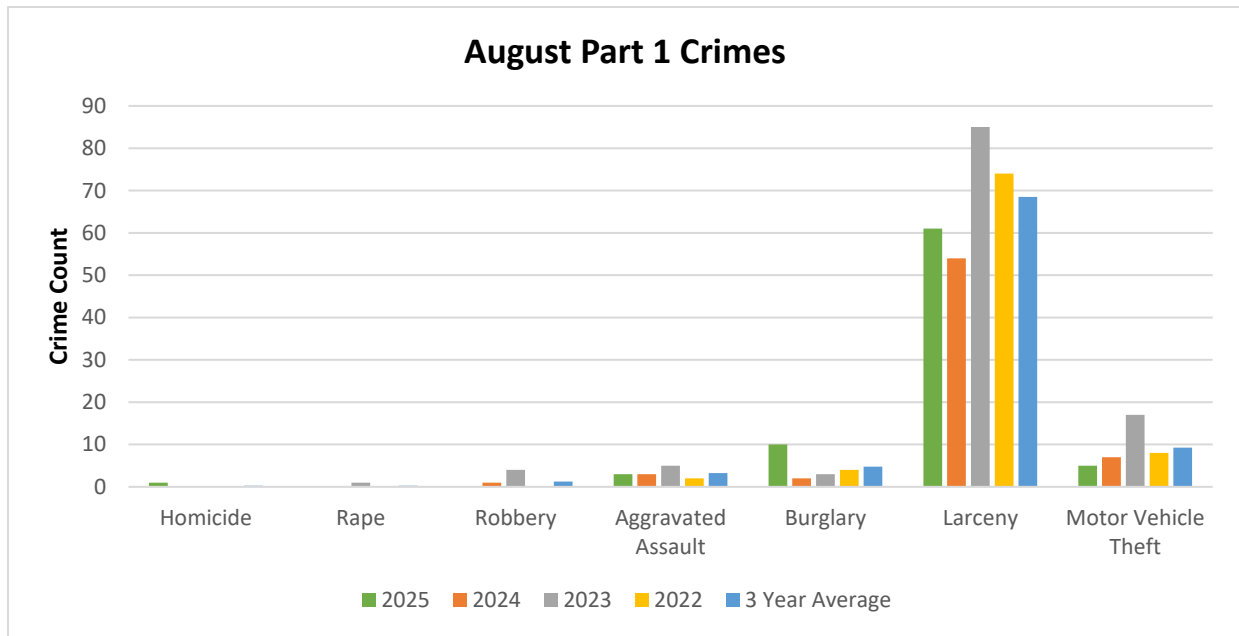
Comparison to Jul to Aug 3 Year Avg: -2%

Monthly Crime Statistics

Below is a table and bar graph of the counts for Part 1 Crimes in August. For comparison, the same is shown for the past 3 years. The average of the 3 years was calculated.

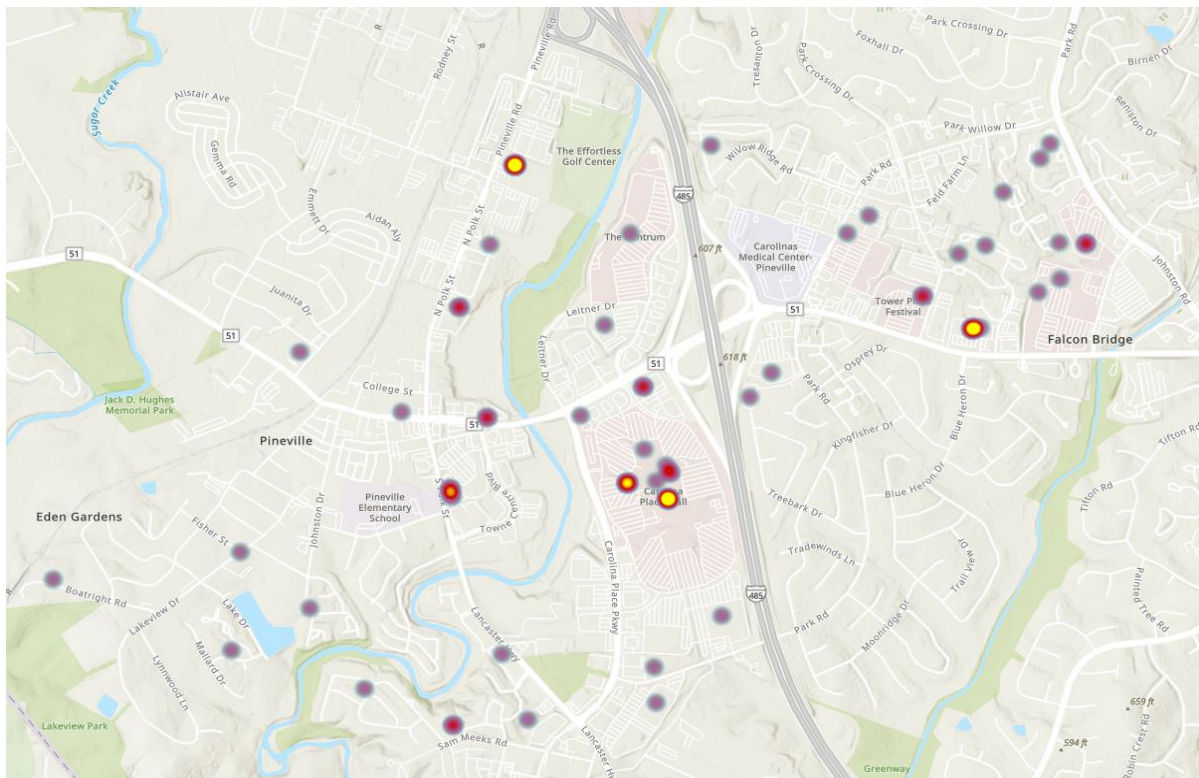
August Crime Stats						
Part 1 Offenses						
	2025	2024	2023	2022	3 Year Average	ETJ
Homicide	1	0	0	0	0	0
Rape	0	0	1	0	0	0
Robbery	0	1	4	0	1	0
Aggravated Assault	3	3	5	2	3	0
Burglary	10	2	3	4	5	0
Larceny	61	54	85	74	69	0
Motor Vehicle Theft	5	7	17	8	9	0

* ETJ statistics included in total number of offenses



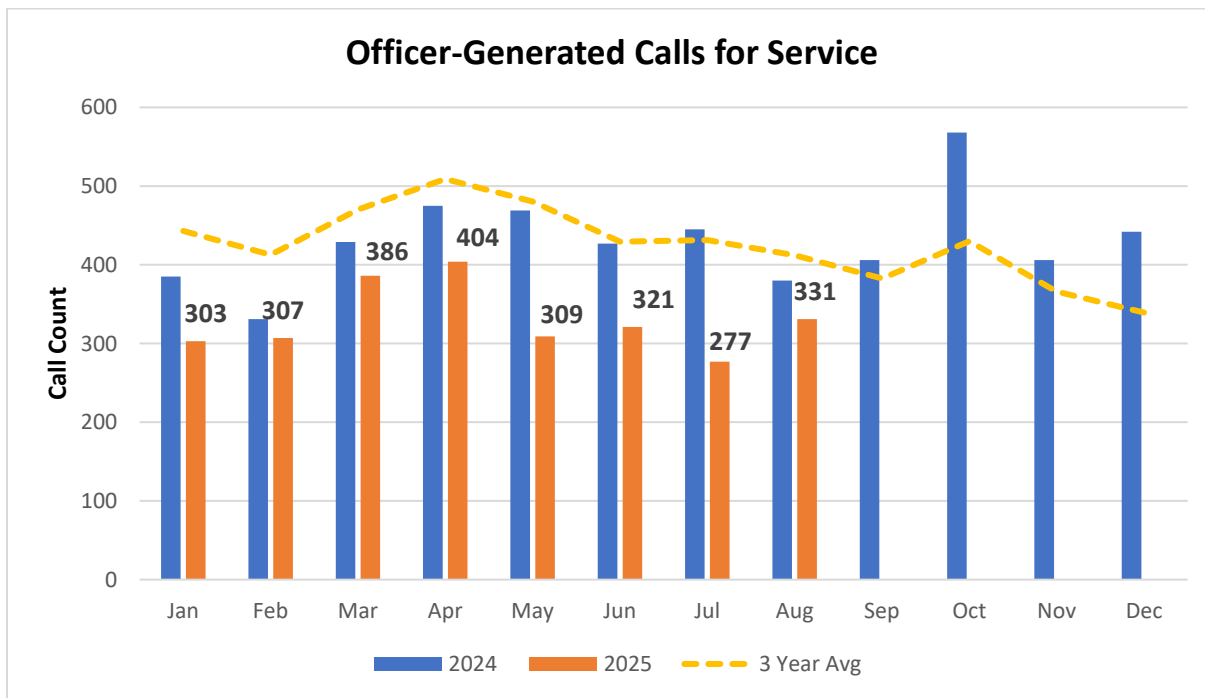
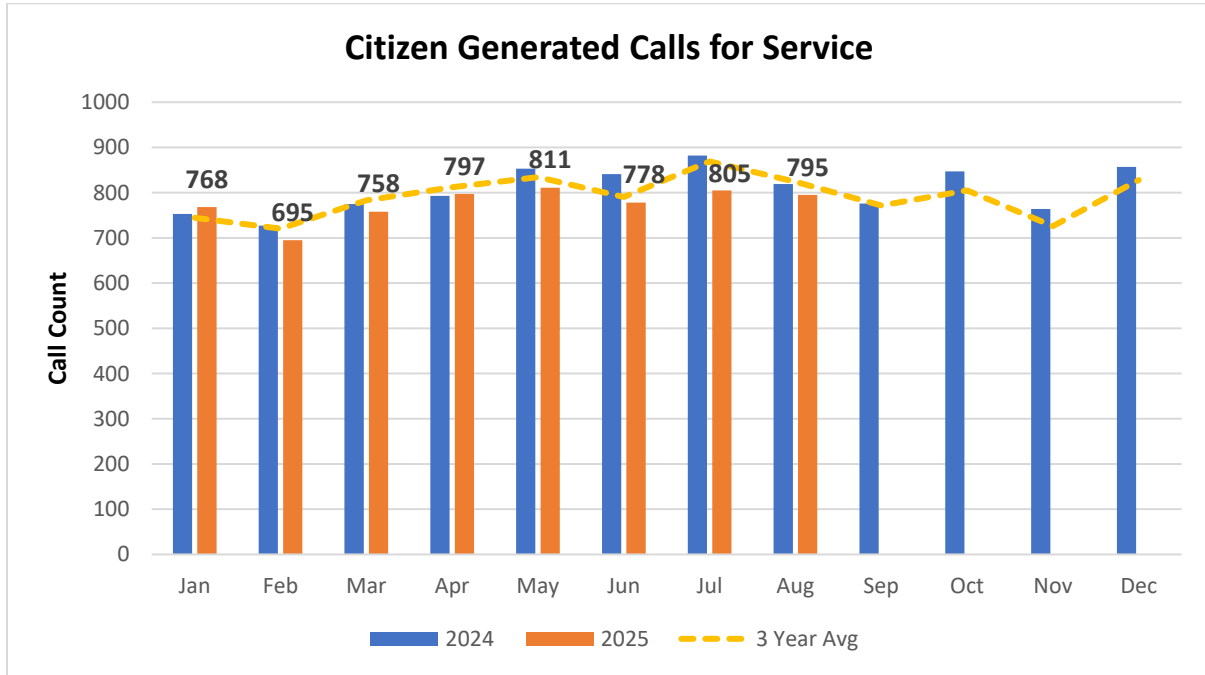
Top Crimes Mapped

Property crime makes up the majority of our crime. Specifically, these crimes are shoplifting, theft from motor vehicle, all other larceny, and burglary. The heat map below shows these crimes mapped and their hot spots. For August, hot spots include the Public Storage on Pineville Rd, Family Dollar, and Food Lion on S. Polk, Carolina Place Mall.

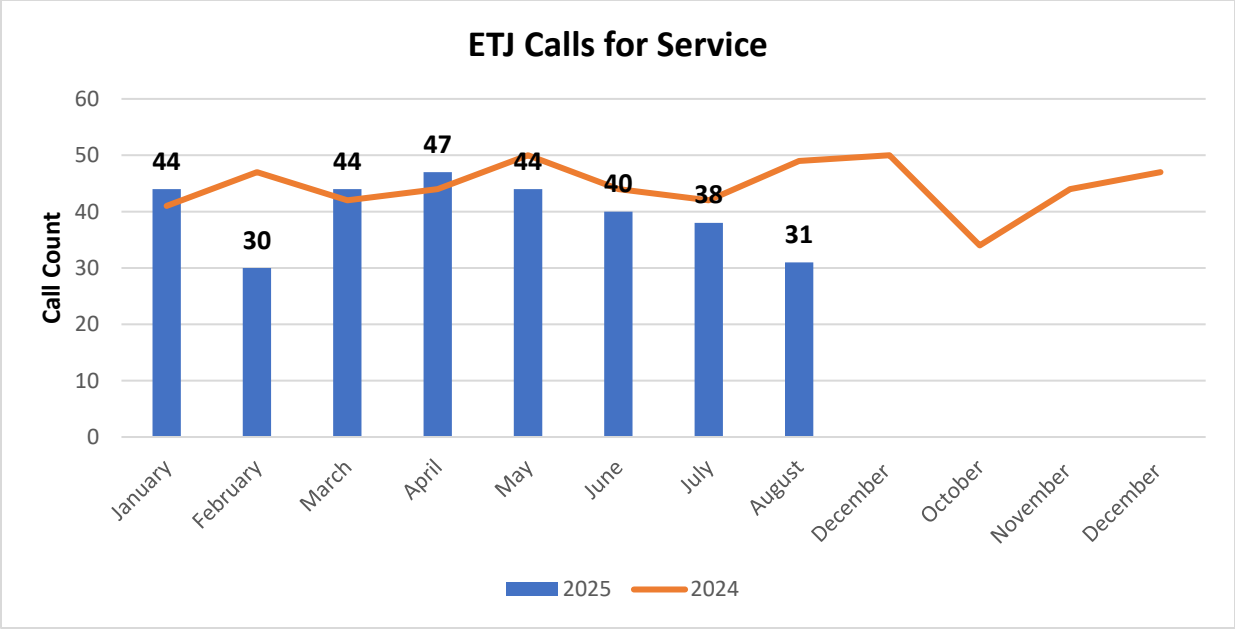


Calls for Service

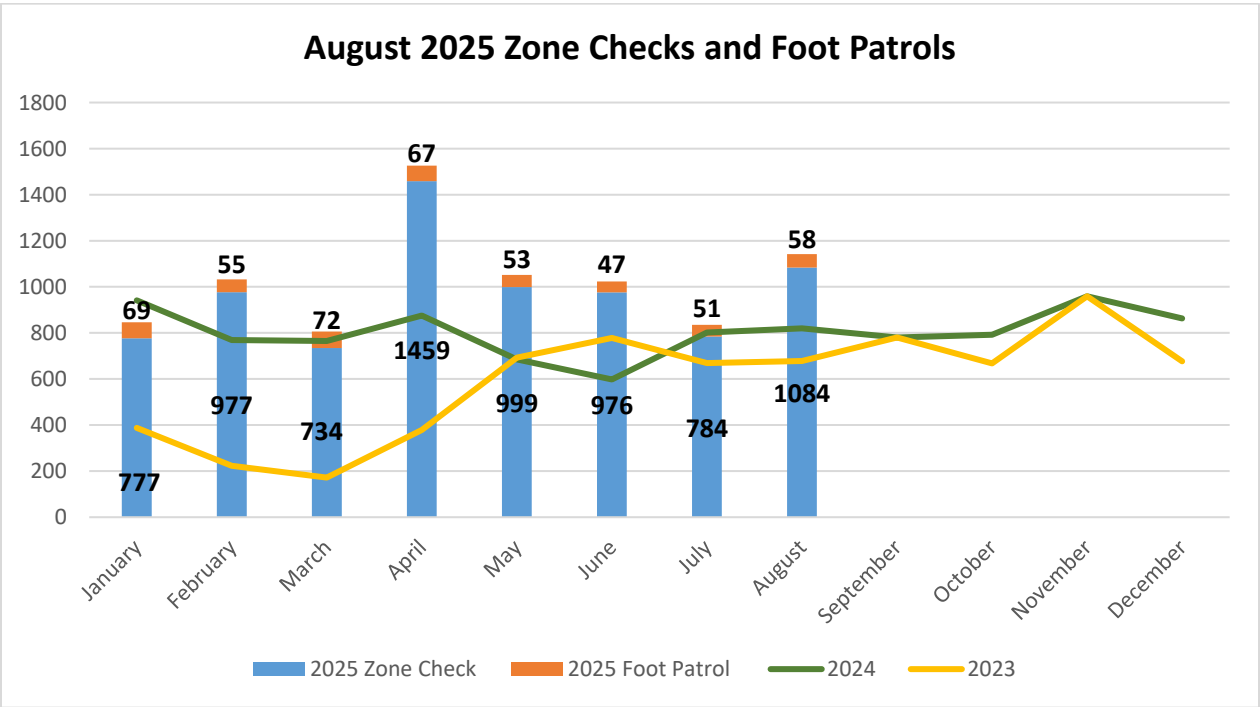
The graphs below display the number of calls for service in comparison to previous months, year, and 3-year average. The first graph is citizen-generated calls. The second graph is officer-generated calls. The final graph is the ETJ.



*zone checks and foot patrols removed



Zone Checks and Foot Patrols



August Traffic Enforcement

Traffic Enforcement Type and Dispositions

Enforcement	Count
Traffic	163
Citation Issued	39
Warning	115
Report Taken	4

*Officer Generated Stops

Locations of Traffic Enforcement

Street	Count
PINEVILLE-MATTHEWS RD	31
MAIN ST	21
POLK ST	20
CAROLINA PLACE PKY	13
COMMERCE DR	9
ROCK HILL-PINEVILLE RD	7
PINEVILLE RD	6
PARK RD	6
CENTRUM PKY	6
Towne Centre BLVD	4
PARK CEDAR DR	3
INDUSTRIAL DR	3
LANCASTER HWY	3
LEE ST	3
DOWNS CIR	2
SAM MEEKS RD	2
KINNERTON PL	1
CHURCH ST	1
DOWNS RD	1
LOWRY ST	1
PINEVILLE FOREST DR	1
I-485 INNER HWY	1
PLUM CREEK LN	1
SABAL PARK DR	1
I-485 OUTER HWY	1
CHARTER OAK LN / PINEVILLE-MATTHEWS RD	1

PARK RD/TREEBARK	1
MCMULLEN CREEK GREENWAY ENTRANCE	1
PINEVILLE METHODIST	1
MCMULLEN CREEK PKY	1
CADILLAC ST	1
MORROW AVE	1
LAKEVIEW DR	1
OAKBROOK DR	1
extended stay off 51	1
OLD TOWN HALL	1
main st social district	1
WINDY PINES WAY	1
485 OL	1
main st at ppd	1
Grand Total	163

Co-Responder Activity

July 2025-

9 clients

- 2 child mental health,
- 1 adult mental health,
- 2 homeless,
- 3 homeless/Mental Health,
- 1 substance use

7 engaged via CFS

1 engaged via Referral

1 engaged via outreach

8 follow-ups completed

2 diverted from jail & Referred

5 diverted from hospital & Referred

1 transported to hospital (Atrium Pineville) by Medic

Unable to make contact with 1 individual (left scene prior to my arrival)

August 2025-

21 Clients

- 2 Child mental health
- 2 family conflict
- 1 Family conflict/Mental health

5 homeless
3 homeless/mental health
4 Mental health
1 Substance use
1 Substance use/Mental health
2 other (Grief)
13 engaged via CFS
2 engaged via outreach
6 engaged via referral
60 Follow-ups completed

5 diverted from jail & Referred
9 diverted from hospital & Referred
3 hospitalized
1 arrested
2 unable to reach
1 Other (referral for family member)

August Community Engagement

- BINGO w/PNP at Belle Johnston 8/1
- “CPTED” Zumiez 8/4
- Homeless referral with Allison 8/11
- Homeless referral with Allison 8/12
- Pineville Night Charlotte Knights 8/13
- Homeless contact/relocation 8/14
- Pineville Elementary Work Day 8/15
- Ascent Apartment back to school party 8/15
- “CPTED” at new fire house 8/15
- Shop with a Carolina Panther Pro at Dick’s 8/17
- Homeless referrals with Allison 8/19
- Backpack giveaways w/QCD at Pineville Elementary 8/20

- Allison and I met w/Hearts for Invisible 8/20
- BINGO at Haven 8/20
- Ride for homeless couple, housing in Charlotte 8/20
- First day of school / direct traffic 8/25
- Safety Meeting 8/27
- Park at Caterina National Night Out 8/28