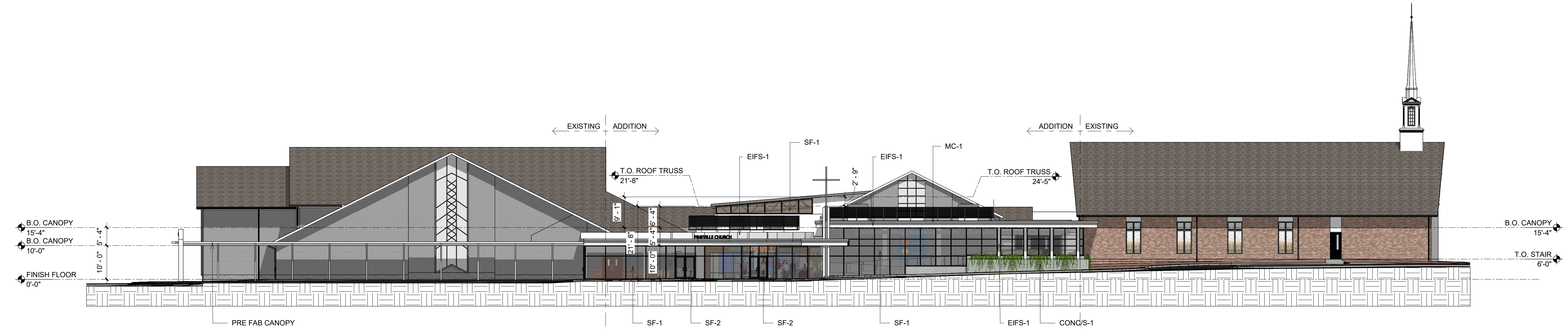
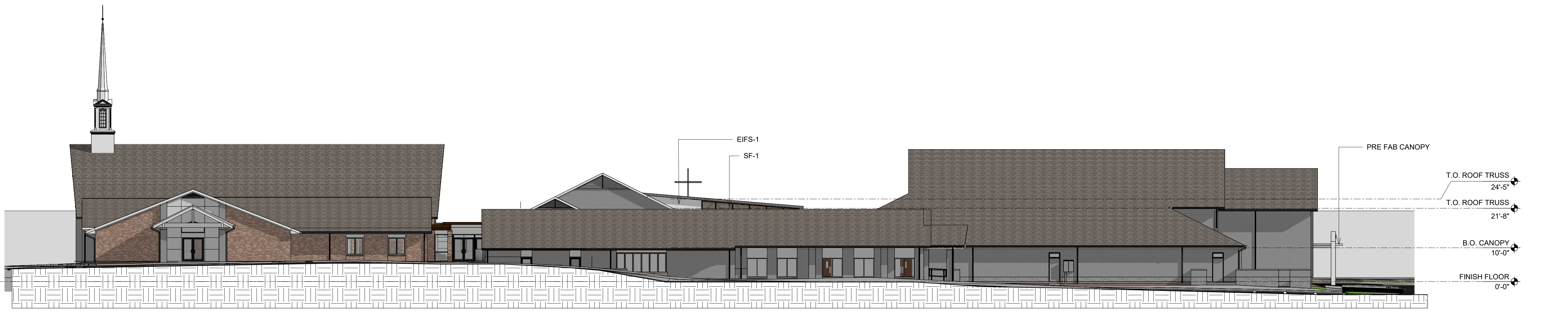


PROJECT: PINEVILLE CHURCH OF THE NAZARANE EXTERIOR MATERIAL SCHEDULE					
	MATERIALS	MANUFACTURER	DESCRIPTION	AREA/LOCATION	REMARKS
MC-1	METAL COPING	COLORKLAD	COLOR: GRAY	(SEE EXTERIOR ELEVATIONS)	-
EIFS-1	PAINT / EXTERIOR	SHERWIN WILLIAMS OR EQUAL	COLOR/FINISH: WHITE: SW7757 HIGH REFLECTIVE WHITE	(SEE EXTERIOR ELEVATIONS)	-
SF-1	STOREFRONT (ANODIZED ALUM.)	KAWNEER OR APPROVED EQUAL	COLOR: CLEAR #14	STOREFRONT SYSTEM	2 1/2" x4" FRAME SECTION
SF-2	STOREFRONT (ANODIZED ALUM.)	KAWNEER OR APPROVED EQUAL	COLOR: CLEAR #14	STOREFRONT DOORS	2 1/2" x4" FRAME SECTION
CONC/S-1	STAIN CONCRETE	VALSPAR OR EQUAL	COLOR/FINISH: STAIN FINISH	(SEE EXTERIOR ELEVATIONS)	-
PREFAB CANOPY	ALUMINUM	PEACHTREECOVER OR EQUAL	COLOR: WHITE	(SEE EXTERIOR ELEVATIONS)	CANOPY TO HAVE DRAIN, INSTAL PER MANUFACTURER



2
 A201
 EXTERIOR ELEVATION WEST
 1/16" = 1'-0"



1
 A201
 EXTERIOR ELEVATION EAST
 1/16" = 1'-0"

Project Title

1			
2			
3			
4			

No.	Date	Revision	By

Drawn By: GT
 Checked By: FA
 Proj. #: P2332
 Date: 9/12/2024

Sheet Title

EAST & WEST
 EXTERIOR
 ELEVATIONS

Sheet No.

A201