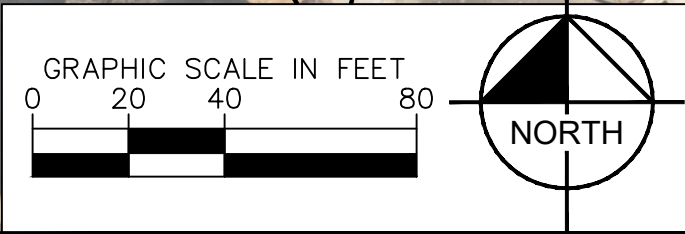
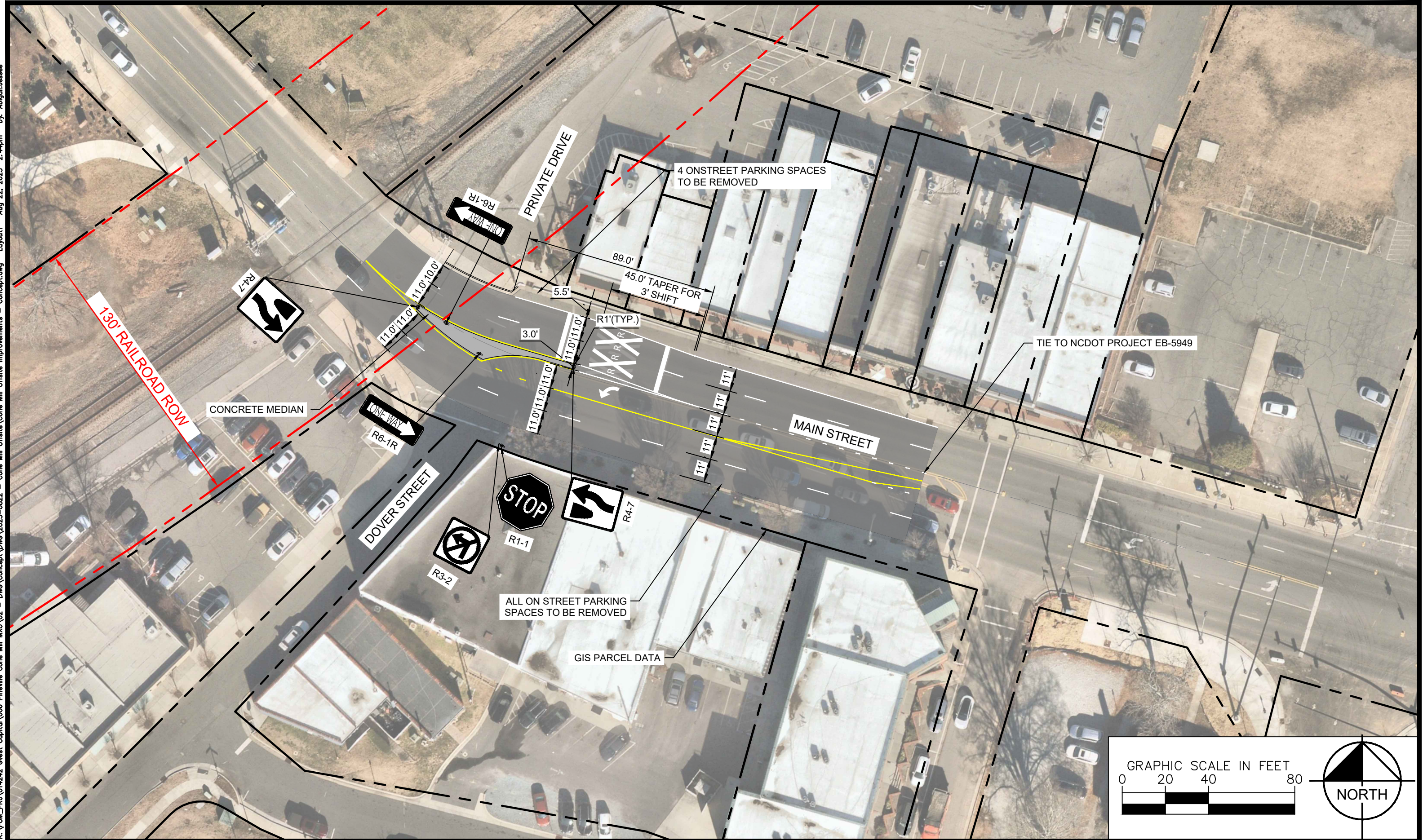


Drawing name: K:\FOM_PRA\014242 Guest Capital\006 Pineville Cone Mill MXU\02 - DWG\Concept\DWG\2025-0822 - Cone Mill Offsite\Cone Mill Offsite Improvements - Concept.dwg Layout1 Aug 22, 2025 2:44pm by: Abigail.Jessee



PINEVILLE CONE MILL OFFSITE IMPROVEMENTS

DATE: AUGUST 2025

SHEET 1 of 1

NC LICENSE # F-0102
580 KINGSLEY PARK DRIVE, SUITE 125
FORT MILL, SOUTH CAROLINA 29715
PHONE 803-728-4756

THIS DOCUMENT, TOGETHER WITH THE CONCEPTS AND DESIGNS PRESENTED HEREIN, AS AN INSTRUMENT OF SERVICE, IS INTENDED ONLY FOR THE SPECIFIC PURPOSE AND CLIENT FOR WHICH IT WAS PREPARED. REUSE OF AND IMPROPER RELIANCE ON THIS DOCUMENT WITHOUT WRITTEN AUTHORIZATION AND ADAPTATION BY KIMLEY-HORN AND ASSOCIATES, INC. SHALL BE WITHOUT LIABILITY TO KIMLEY-HORN AND ASSOCIATES, INC.