

Exhibit A

CERTIFICATE OF OWNERSHIP

I, THE UNDERSIGNED, HEREBY CERTIFY THAT I AM THE OWNER OF THE HAUGEN SUBDIVISION AS SHOWN ON THIS PLAT. I APPROVE THIS SURVEY AND PLAT.

XX XX XX
1200 HAUGEN DRIVE, PETERSBURG,
ALASKA 99833

DATE _____

NOTARY'S ACKNOWLEDGEMENT

SUBSCRIBED AND SWORN TO BEFORE ME THIS _____ DAY OF _____ 20____

BY: _____
(PERSON APPEARING)

NOTARY PUBLIC FOR ALASKA
MY COMMISSION EXPIRES _____

PLAT APPROVAL

I CERTIFY THAT THIS SUBDIVISION PLAT AS SHOWN COMPLIES WITH THE SUBDIVISION REGULATIONS OF THE CITY OF PETERSBURG. THIS SUBDIVISION PLAT IS APPROVED FOR THE RECORDING BY THE DISTRICT RECORDER IN THE PETERSBURG RECORDING DISTRICT.

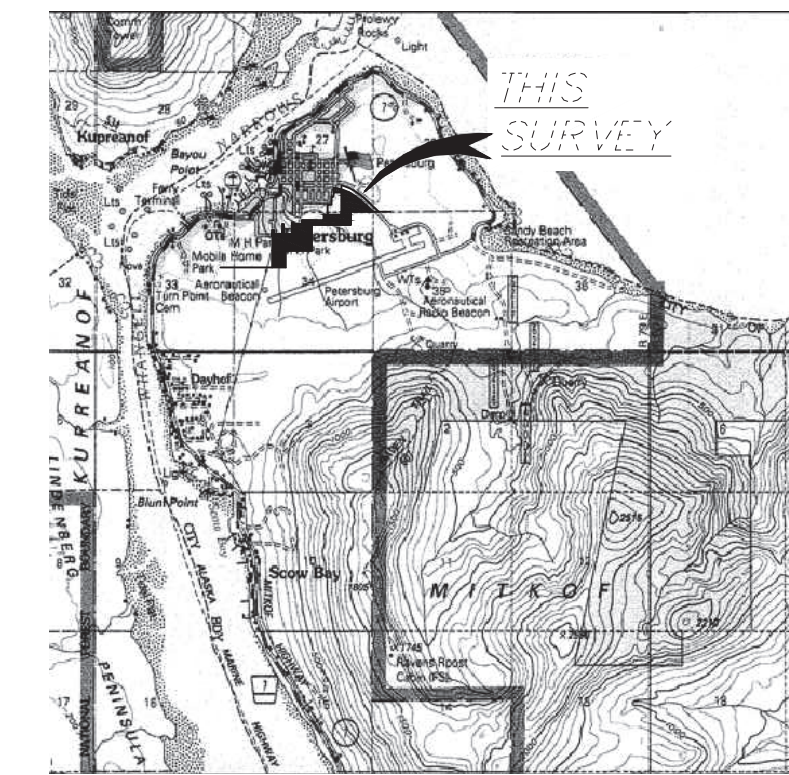
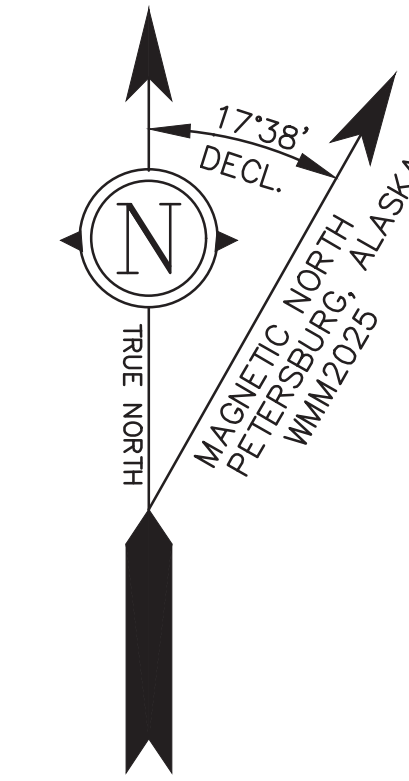
DATE _____ CHAIR, PETERSBURG PLATTING BOARD

DATE _____ ATTEST
SECRETARY, PETERSBURG PLATTING BOARD

TAX CERTIFICATE

I CERTIFY I AM THE FINANCE DIRECTOR OF THE CITY OF PETERSBURG. U.S. SURVEY NO.1168 IS OWNED BY THE CITY OF PETERSBURG, SO THERE ARE NO TAXES ASSESSED AGAINST THIS PARCEL.

NAME: _____ DATE: _____



VICINITY MAP
SOURCE: U.S.G.S. QUADRANGLE PETERSBURG (D-3), ALASKA 1986
1" = 1 MILE

NOTES

- THE EXISTING ORIGINAL CORNERS WERE RECOVERED AND USED TO CONTROL AND CALCULATE THE LOCATION OF THE SUBDIVISION BOUNDARIES, AS SHOWN ON THIS PLAT.
- SET 30" LONG 5/8" DIAMETER REBAR WITH 2" ALUMINUM CAP WITH PLASTIC INSERT AT LOCATIONS AS INDICATED ON THIS PLAT, STAMPED AS SHOWN IN THE TYPICAL.
- THE ERROR OF CLOSURE OF THIS SURVEY DOES NOT EXCEED 1:5000, AND/OR CORNER POSITIONS HAVE A RELATIVE POSITION ACCURACY AT THE 95 PERCENT CONFIDENCE LEVEL OF 0.13 FEET PLUS 100 PPM.
- ALL BEARINGS SHOWN ARE TRUE BEARINGS AS ORIENTED TO THE BASIS OF BEARING AND DISTANCES SHOWN ARE REDUCED TO HORIZONTAL FIELD DISTANCES.
- THIS PLAT IS SUBJECT TO:
 - THIS PLAT IS SUBJECT TO THE NOTES AND EASEMENTS SHOWN ON PLAT 2009-16.
 - THIS PLAT IS SUBJECT TO THE NOTES AND EASEMENTS SHOWN ON PLAT 2024-5.
 - THIS PLAT IS SUBJECT TO THE NOTES AND EASEMENTS SHOWN ON PLAT 2010-1.
 - THIS PLAT IS SUBJECT TO THE NOTES AND EASEMENTS SHOWN ON PLAT 69-202.
 - THIS PLAT IS SUBJECT TO THE NOTES AND EASEMENTS SHOWN ON PLAT 2023-5.
 - THIS PLAT IS SUBJECT TO THE NOTES AND EASEMENTS SHOWN ON PLAT 2016-4.

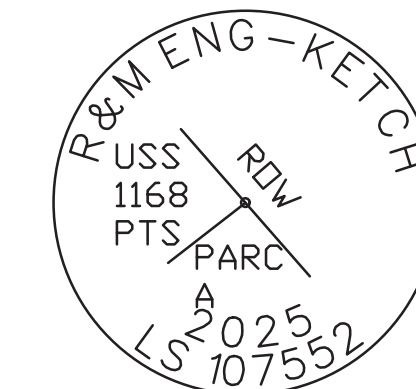
LEGEND

	FOUND PRIMARY MONUMENT-3 1/4" DIA. ALUM. CAP ON 2 1/2" DIA. ALUM. POST WITH MAGNET UNLESS OTHERWISE NOTED
	SECONDARY MONUMENT RECOVERED
	SECONDARY MONUMENT SET THIS SURVEY
	UNSURVEYED
	SURVEYED
	OVERHEAD UTILITY LINE
	RECORD BEARING AND DISTANCE PLAT 2009-16
	UTILITY POLE

BASIS OF BEARING

BEARINGS SHOWN ARE NAD 83 GEODETIC BEARINGS BASED ON HIGH PRECISION GLOBAL NAVIGATION SATELLITE SYSTEM TECHNOLOGY, USING TRIMBLE R10-2 RECEIVERS, DIFFERENTIALLY CORRECTED AND PROCESSED USING TRIMBLE BUSINESS CENTER SOFTWARE VERSION 2025.10. DISTANCES SHOWN ARE REDUCED TO HORIZONTAL FIELD DISTANCES.

TYPICAL SECONDARY MONUMENT SET THIS SURVEY

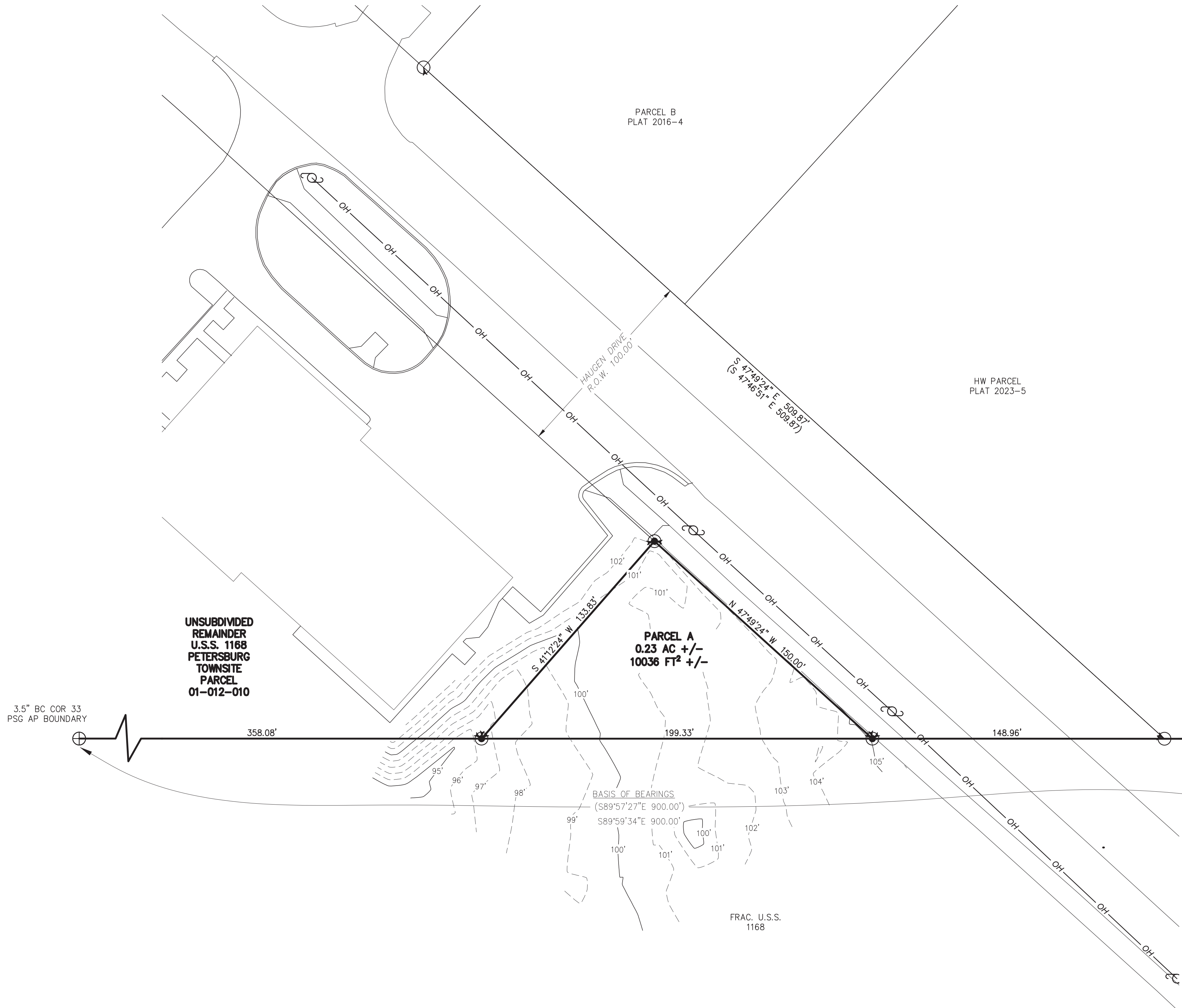


SET 5/8" X 30" LONG REBAR (UNLESS OTHERWISE NOTED) AND 2" ALUMINUM CAP WITH PLASTIC INSERT

SCALE 1"=30'

THIS DRAWING MAY BE REDUCED. VERIFY SCALE BEFORE USING

1 METER = 3.2808333 U.S. SURVEY FEET
1 U.S. ACRE = 0.4047 HECTARES



DATE OF SURVEY: _____	R&M ENGINEERING-KETCHIKAN, INC. 7180 REVILLA ROAD, SUITE 300 KETCHIKAN, AK 99901 Phone: (907) 225-7917 CERTIFICATE OF AUTHORIZATION #: C576
BEGINNING: _____ OCTOBER, 2025	
ENDING: _____ OCTOBER, 2025	

SURVEYOR'S CERTIFICATE

I HEREBY CERTIFY THAT I AM PROPERLY REGISTERED AND LICENSED TO PRACTICE LAND SURVEYING IN THE STATE OF ALASKA, THAT THIS PLAT REPRESENTS A SURVEY MADE BY ME OR UNDER MY DIRECT SUPERVISION, THAT THE MONUMENTS SHOWN HEREON ACTUALLY EXIST AS DESCRIBED, AND THAT ALL DIMENSIONS AND OTHER DETAILS ARE CORRECT.

DATE _____

CHRISTOPHER G. PIBURN, PLS # 107552



A PLAT OF HAUGEN SUBDIVISION CREATING PARCEL A

A SUBDIVISION OF
USS 1168 PETERSBURG TOWNSITE
PARCEL 01-012-010
LOCATED WITHIN
USS 1168 PETERSBURG TOWNSITE
CREATING PARCEL A
CONTAINING 0.23 ACRES MORE OR LESS
PETERSBURG RECORDING DISTRICT

DRAWN BY: EBH	
DATE: NOVEMBER 2025	
SURVEYOR: EBH	
SCALE: 1"=30'	CHECKED: CGP
	RM PROJECT NUMBER 252759.01