

# BLIND SLOUGH HYDRO OWNER'S DAM SAFETY PLAN AND EMERGENCY ACTION PLAN

Presentation to Petersburg Borough Assembly  
January 20, 2026

- ▶ Federal Energy Regulatory Commission License Requirements – Safety plans
- ▶ Owner's Dam Safety Plan
- ▶ Emergency Action Plan

# AGENDA

# FERC LICENSE REQUIREMENTS FOR SAFETY

- ▶ Public Safety Plan
  - ▶ Dam Safety, Surveillance and Monitoring Plan
  - ▶ Owner's Dam Safety Plan
  - ▶ Emergency Action Plan
- 
- A series of three parallel white diagonal lines in the bottom right corner of the slide, extending from the middle of the right edge towards the bottom left.

# CRYSTAL LAKE OWNER'S DAM SAFETY PLAN

## STATEMENT OF PURPOSE

- ▶ This plan recognizes the special responsibility that all owners must operate their dams in a safe manner.
- ▶ Crystal Lake Dam is a High Hazard Dam due to potential for loss of life and damage to structures at the Crystal Lake Hatchery and USFS Blind Slough picnic area if a failure were to occur.



# PROJECT DESCRIPTION





















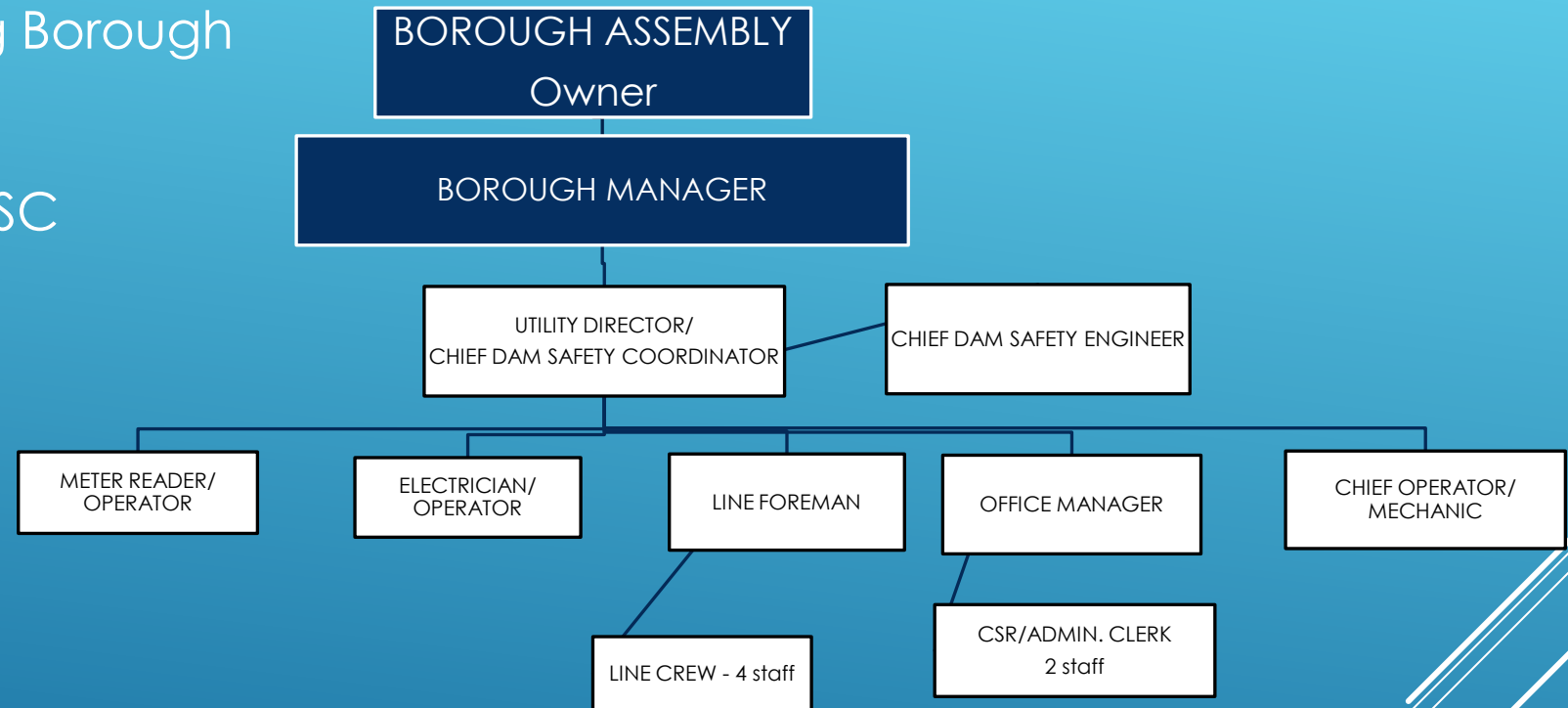






# RESPONSIBILITY FOR DAM SAFETY

- ▶ Owner – Petersburg Borough
- ▶ Operator – PMPL
- ▶ Utility Director – CDSC
  - ▶ CDSE
- ▶ PMPL Staff





DAM SAFETY TRAINING

COMMUNICATIONS/REPORTING

RECORD KEEPING

CONTINUAL IMPROVEMENTS

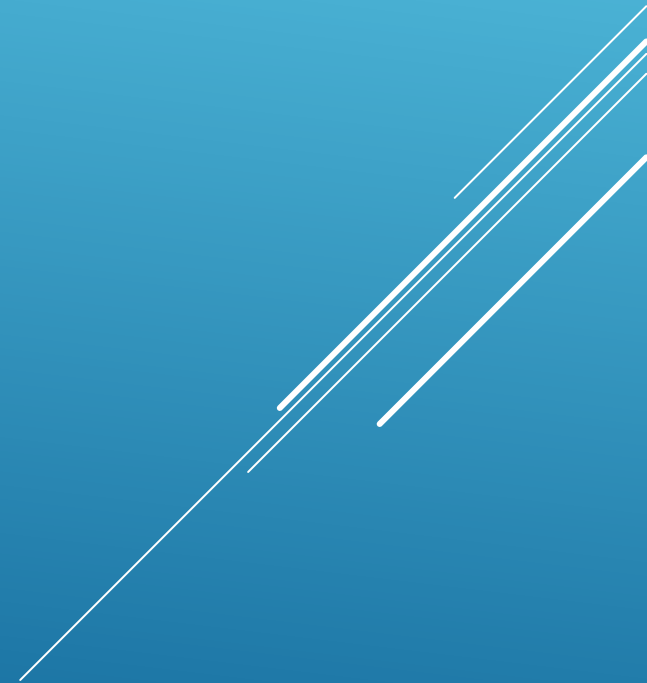
ODSP AUDITS

THE ODSP SERVES TO ESTABLISH AND MAINTAIN A SAFE  
HYDROELECTRIC PROJECT FOR THE BOROUGH AND MEMBERS  
OF THE PUBLIC.

Several thin, parallel white lines of varying lengths and orientations are positioned in the bottom right corner of the slide, creating a modern, abstract graphic element.

# EMERGENCY ACTION PLAN

- ▶ This plan defines responsibilities and provides procedures designed to identify unusual and unlikely conditions which may endanger the Crystal Lake Dam in time to mitigate any hazards and notify affected parties of possible, impending or actual failure of the dam.



# DAM SAFETY EMERGENCY LEVEL CATEGORIES

CDSC, IN CONSULTATION WITH CDSE, DETERMINES IF ACTIVATION OF EAP IS NECESSARY AND THE EMERGENCY LEVEL PRIOR TO NOTIFICATIONS

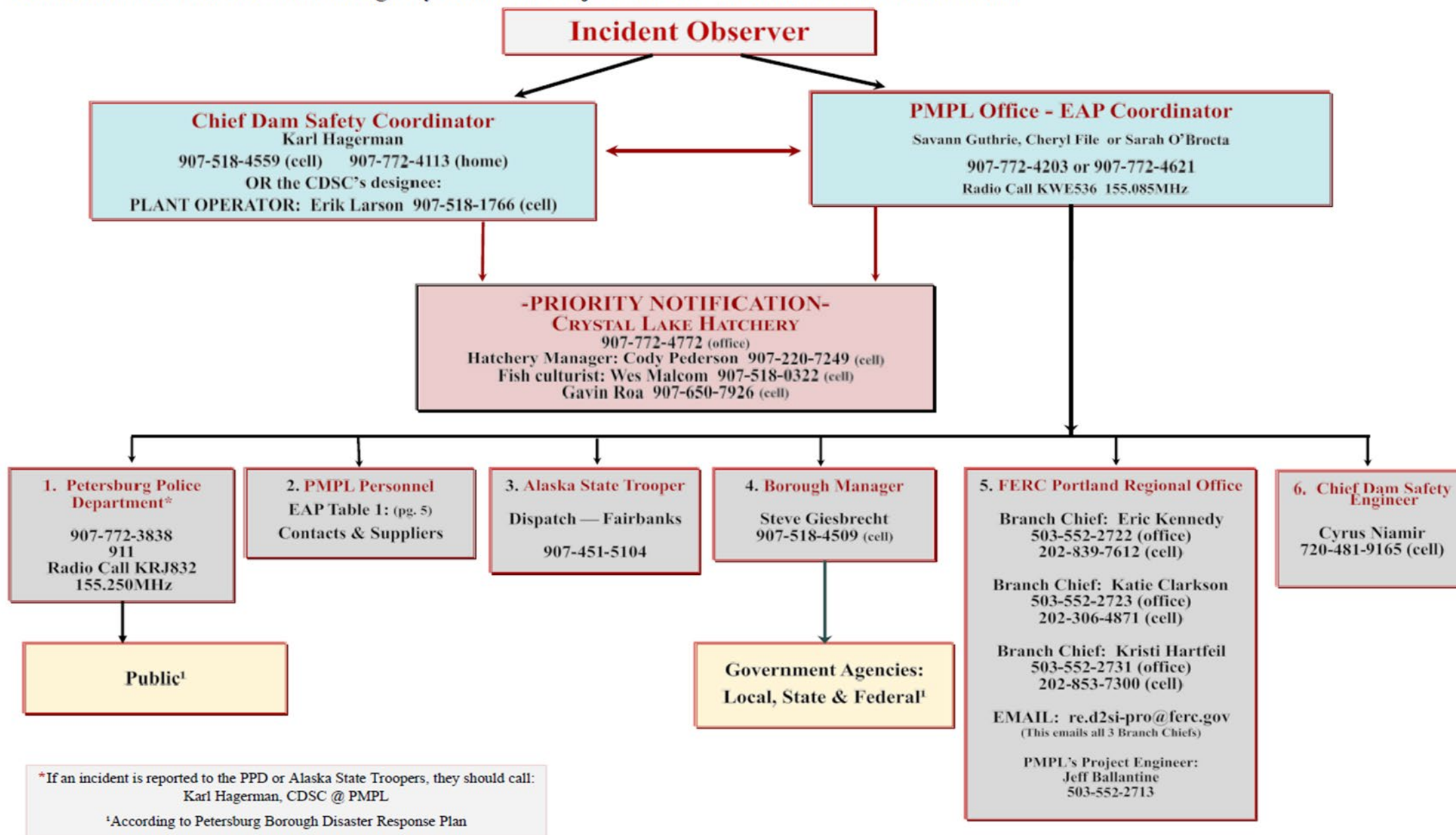


Non-  
failure

Potential  
Failure

Imminent  
Failure

# Notification Flowchart for Blind Slough Hydroelectric Project No. 201—Potential or Imminent Failure



## ▶ EAP Provisions

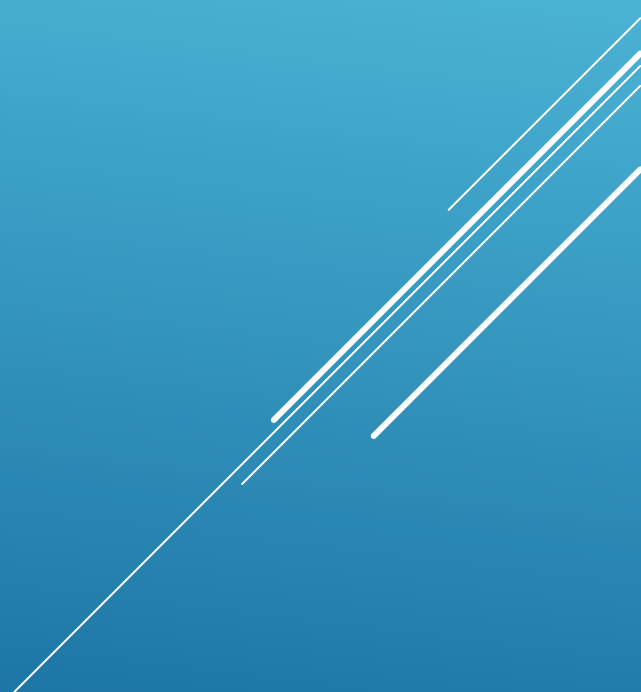
- ▶ Detection

- ▶ Notification and communication

- ▶ Emergency Actions

- ▶ Termination and follow-up

- ▶ Preparedness











► FERC mandated safety plans serve to make our hydroelectric project safe for employees and the public, and also guide the Borough in the event of an emergency situation.

► Thank you

► Questions?

Several thin, parallel white lines of varying lengths and orientations are positioned in the bottom right corner of the slide, creating a modern, abstract graphic element.