

---

**File Code:** 2360  
**Date:** January 29, 2024

Mark Jensen  
Mayor  
Petersburg Borough  
Po Box 329  
Petersburg AK, 99833

Dear Mayor Jensen,

The USDA Forest Service (FS) Petersburg Ranger District plans to renovate the Petersburg Federal Building (formerly Petersburg's US Post Office) at 12 N. Nordic Drive in Petersburg, Alaska (Figure 1). The Petersburg Borough has been identified as an interested party to this effort.

Built in 1972, the Petersburg Federal Building is now over 50 years of age and was recently determined eligible for listing on the National Register of Historic Places. Its National Register eligibility is based on its New Formalism architectural style from the Late Modern Period, which is a less common style for buildings in Alaska. Additionally, the building has an historic association with a federal development program in the 1950s through the 1970s, as well as an association with an increased federal workforce in local areas. Since the 1980s the building and site have undergone a series of modifications as the use shifted from a federal post office to the Tongass National Forest's Petersburg Ranger District office. The exterior of the building retains much of its historic integrity and character.

The renovation project proposes both interior and exterior changes to the building. Most of the interior work would consist of updating electrical, ventilation and fire suppression systems, updating finishes, and reconfiguring the interior layout for a more modern workplace. Some of this work would result in changes to the exterior of the building, such as replacing the opaque storefront panels on the northeast corner with operable windows and replacing the windows on the south end of level 2 to help with noise reduction (Figures 2-5). To minimize negative effects to the building's historic integrity, the FS proposes using an aluminum window that closely matches the original window style and material used in the era the building was built. Additionally, the project is proposing to replace metal doors on the north lower elevation and to restore the original stucco finish to the outside of the building's penthouse (Figures 2-5).





Figure 1. Petersburg Federal Building

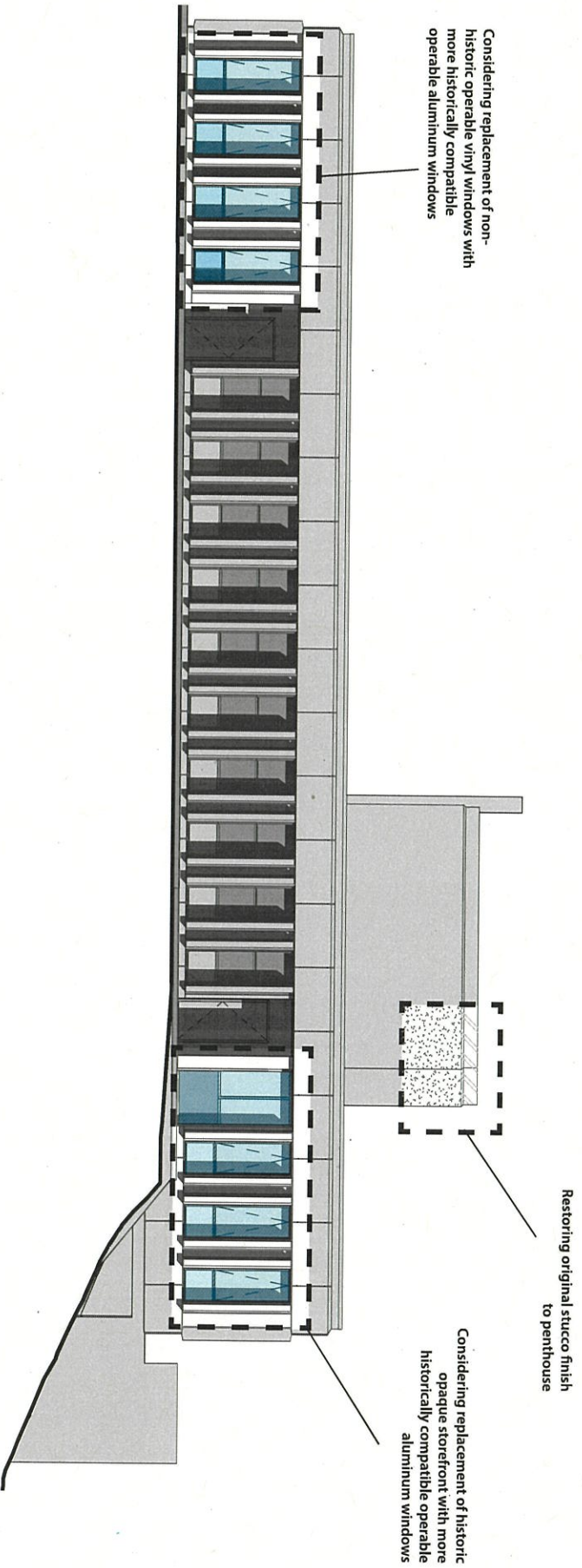
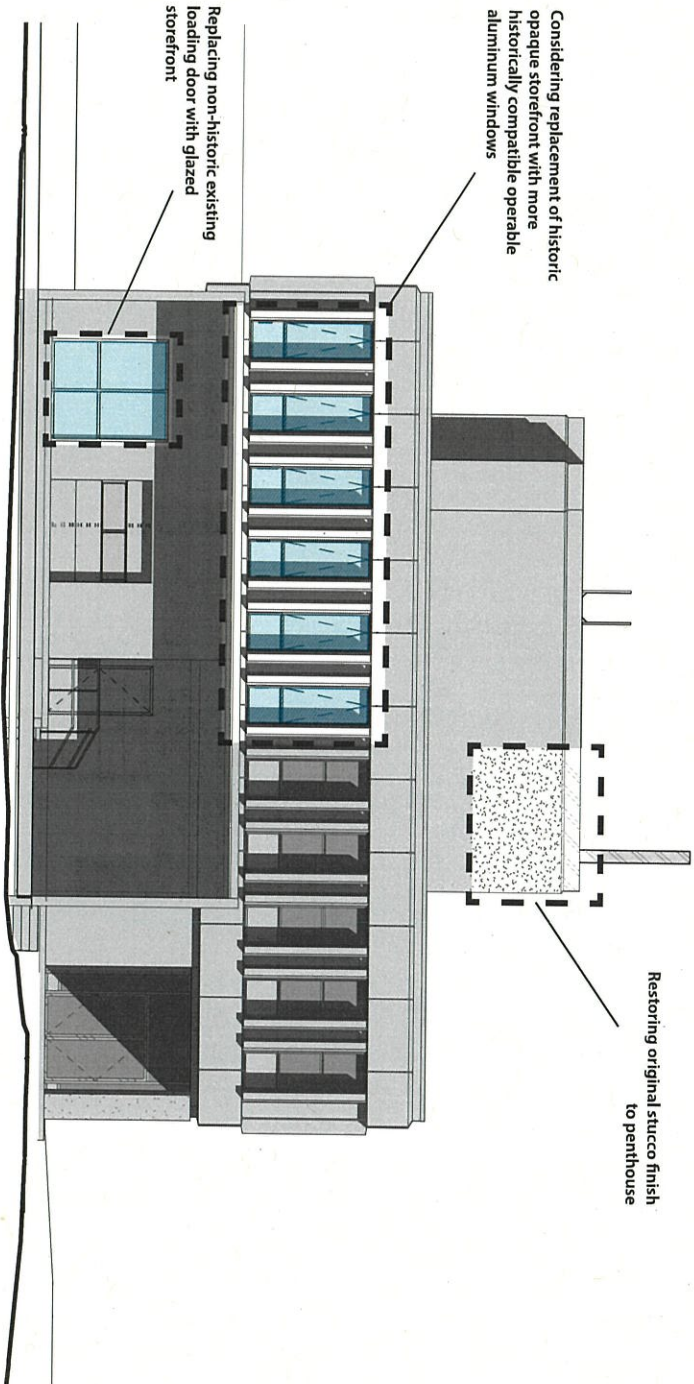


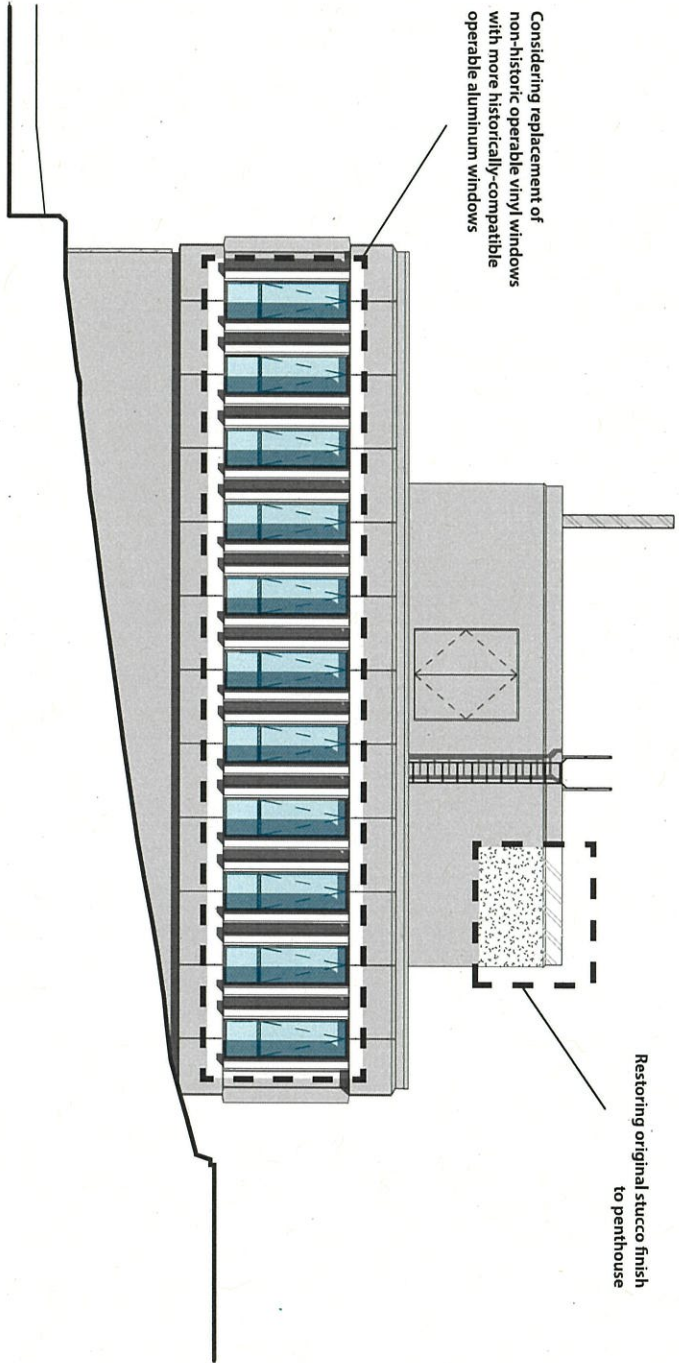
Figure 2.

EAST ELEVATION - PRELIMINARY DESIGN





**Figure 3. NORTH ELEVATION - PRELIMINARY DESIGN**



**Figure 4. SOUTH ELEVATION - PRELIMINARY DESIGN**

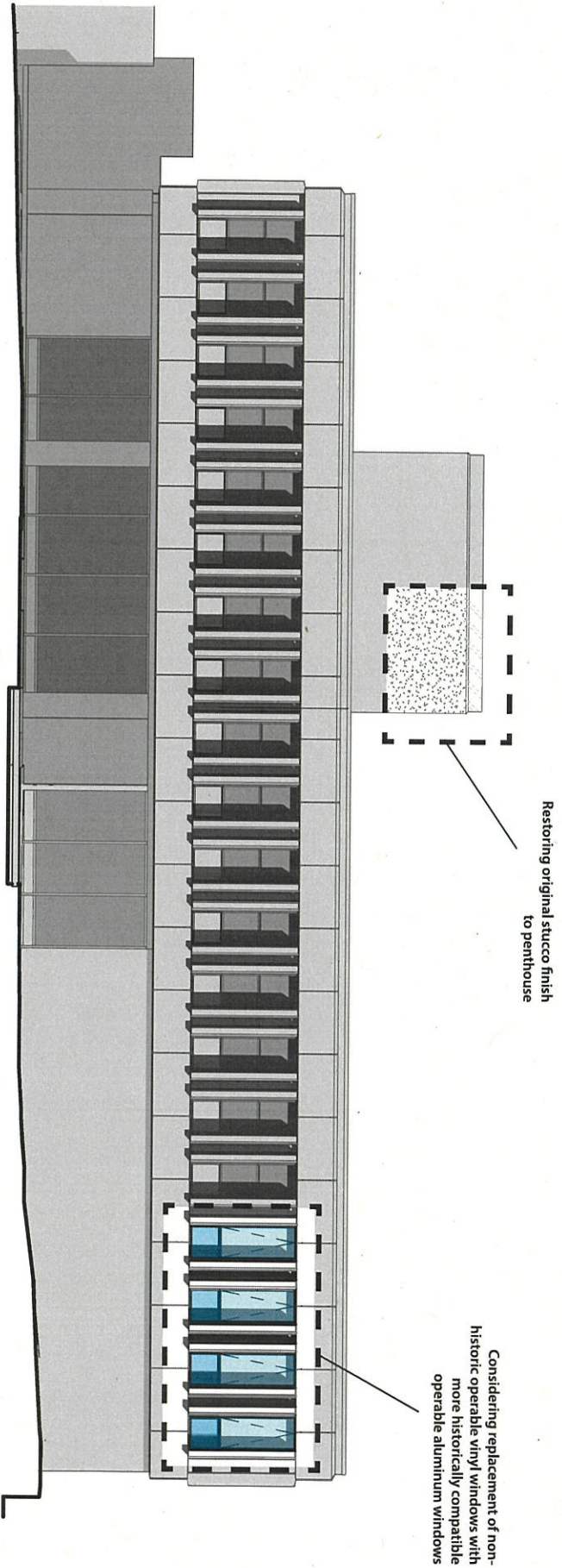


Figure 5.

WEST ELEVATION - PRELIMINARY DESIGN