



Petersburg
MEDICAL CENTER

PMC CEO Borough Assembly Report July 2025

Mission Statement: Excellence in healthcare services and the promotion of wellness in our community.

Guiding Values: Dignity, Integrity, Professionalism, Teamwork, and Quality

Workforce Wellness: *Goal: To create a supportive work environment and promote the physical and mental well-being of hospital staff to improve retention and overall productivity.*

- **June 4:** Physician Lunch
- **June 11:** Medstaff meeting, with presentation by Dr. Sonkiss
- **June 12:** Student Intern Orientation with Phil, Human Resources and IT
- **June 19 :** Office Hours/Coffee with Phil
- **June 20:** Environmental Care Rounds
- **June 20:** Manager Meeting
- PMC Celebrates the following professionals in June: Community Health Improvement employees Becky Turland, Mariah Clemens, Katie Holmlund, Jake Clemens, Kaili Watkins, Logan Stolpe, and Julie Walker. National Nurse Assistants (CNAs) Lillee Birchell, Daphany Capitini, Veronica Carter, Lucille Chapman, Holli Davis, Aileen Eilenberger, Myaca Francisco, Alana Esguerra, Carline Gayle, Gia Goodridge, Kathleen Heistuman, Fe Lamphere-England, Jamie Lockart, Audrey Moreno, Alice Neidiffer, Jackie Neidiffer, Janisa Nguyen, Erica O'Neil, Anya Pawuk, Caity Pearson, CeCe Perkins, Luke Sinclair, Avery Skeep, Kendra Speh, and Shirley Yip.



Becky, Mariah, Julie, Kaili



CeCe, Shirley, Lillee, Lucy, Anya

Community Engagement: *Goal: To strengthen the hospital's relationship with the local community and promote health and wellness within the community.*

- **June 2:** Submitted report for Borough Noon Assembly Meeting.
- **June 15:** Letters to Senator Murkowski and Senator Sullivan submitted (see attached)
- **June 17:** Op Ed published to Anchorage Daily News (see attached)
- **June 26:** KFSK/PMC Live
- **June 26:** Hospital Board Meeting open to the public
- **Ongoing this summer:** Kinderskog programs and ORCA camps launch featuring theater camps, FUEL Up, Kayak Expedition, Wiffleball, Flyfishing, and Wild Trails.
- **Ongoing:** Bingocize and Tai Ji Quan, part of fall prevention programs
- **Art Donation:** Art Donation from Beth Flor for the new facility. Pieces will temporarily be displayed in the WERC building until they can be moved to the new facility. Total of seven framed canvas paintings.



Petersburg High School (PHS) / Petersburg Medical Center CNA course

In the fall of 2016, PHS and PMC partnered to offer a Certified Nurse Assistant (CNA) course to PHS students. High school students were given the opportunity to complete their CNA training over the school year. The PHS / PMC course has been offered every other year to PHS students!

This year, the program includes juniors Gabriele Whitacre and Freya Tucker; seniors Martha Midkiff, Izabella Tarquino, and Elizabeth Burns. Special thanks to Traci Vinson, the course instructor, for her dedication & support.



Gabriele, Freya, Martha, Traci (Course Instructor)
Izabella, Elizabeth

Patient Centered Care: Goal: To provide high-quality, patient-centered care, and promote wellness for patients.

- June is showing consistent patient volumes, and we are anticipating increased volumes as we move into the summer months.
- Joy Janssen Clinic Access to Primary Care: We remain fully staffed with 4 Physicians and 2 mid-level practitioners. M-F 8AM-5PM, and Saturday 8AM-12, 1PM-4:30PM
 - Same day appointments for urgent care are readily available.
 - Next available appointment with primary care provider averages 16 business day wait time
 - Third available appointment with primary care remains an average 16 business days.

-The change in average wait times is due to provider PTO over the summer months. In June there are many two-provider days. Clinic has maintained same day availability for acute and time sensitive appointments.

Total Encounters

Patient Visits

Options ▾

1,375

Encounters
May 2025

107 (8.4%)

Change from
April 2025

1,265

Monthly Average
Past 25 Months



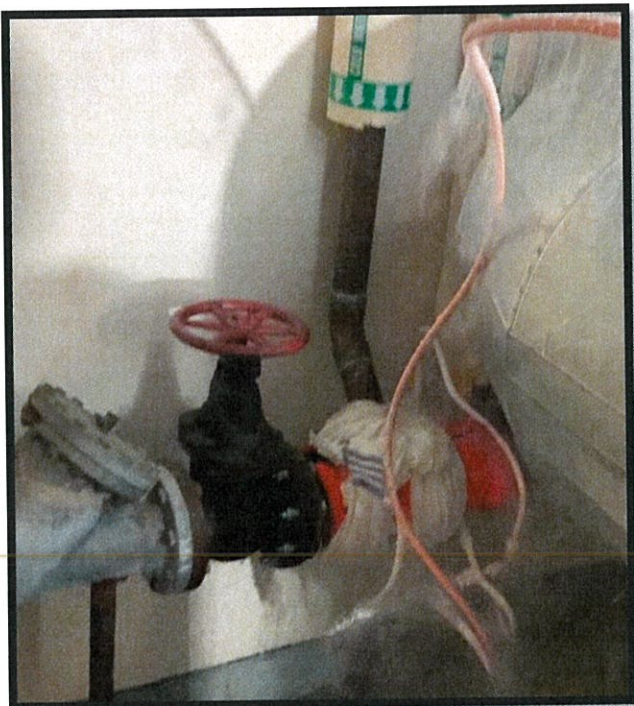
● ☒ Total Encounters

- Psychiatry services are ongoing via telehealth. Dr. Sonkiss was in town this month and saw patients in person. He also gave a presentation at MedStaff for our providers.
 - PMC initiated a partnership with Dr. Sonkiss in September 2024. Since that time, a number of individuals have engaged in psychiatric services with him, either through completed visits or upcoming scheduled intakes. This partnership has expanded access to care through both provider and self-referrals. We look forward to continuing advancements in telepsychiatry as there is an expressed need for it in our community.

- Audiologist, Phil Hofstetter, continues to see patients in Specialty Clinic.
- Dermatologist, Cameron French was in clinic June 9th-13th. He saw a total of 102 patients and is scheduled to return September 15-19th.



- **Current Facility:** We successfully completed the water system isolation and RPZ Assembly Replacement (full after-action report attached in *Old Business*)



New Facility: *Goal: To expand the capacity and capabilities of the community borough-owned rural hospital through the construction of a new facility, while taking into account the needs and priorities of the local community.*

- Arcadis submitted a report with a detailed update on the new facility.
- Base sitework nearly complete.
- Entire parking lot concreted and lines painted.
- Initial furniture, fixtures, and equipment has been ordered.
- MRI addition is 70% complete.
- We continue to be on track and on budget for the WERC building.
- Transition planning with the departments that will move into WERC building, as well as departments that will occupy the vacated space in our existing facility, will continue monthly until the move date this summer/fall.
- Updates: Project updates are available on the PMC website under the “New Facility & Planning” tab. Photos are updated on social media every Friday afternoon.
- As the WERC building nears completion, building tours are closed as floors, paint, and fixtures are added, with an opening date pending.



Financial Wellness: Goal: To achieve financial stability and sustainability for the hospital.
FY25 Benchmarks for Key Performance Indicators (KPIs): Gross A/R days to be less than 55, DNFB < then 5 days, and 90 Days Cash on Hand

- Accounts Receivables (AR) Update: This number was at 96 in March, down to 88 at the end of April, down to 78 mid-June.

Inpatient Days

Options ▾

Hospital Operations

153.00

Days
May 2025

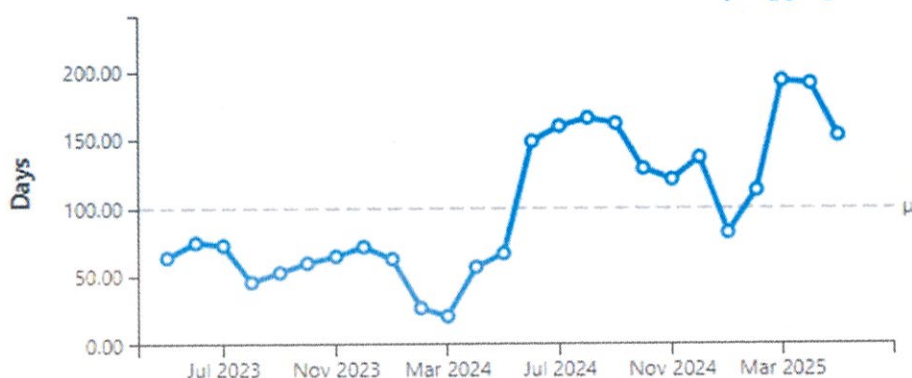
-38.00 (19.9%)

Change from
April 2025

99.96

Monthly Average
Past 25 Months

View By: Aggregate ▾



ED Visits

Options ▾

Hospital Operations

90

Visits
May 2025

13 (16.9%)

Change from
April 2025

79

Monthly Average
Past 25 Months



- ☒ ED Visits
- ☐ Benchmark (Critical Access Clients)

Summary

Average Census

Options *

Hospital Operations

13.77

Patients
May 2025

0.00 (0.0%)

Change from
April 2025

13.36

Monthly Average
Past 25 Months



- Grants; See *attached Grants Report*
- Monthly Financial report attached
- Budget preparations for the next FY26 have been drafted by Finance, detailed report regarding Capital, and Operational budget by CFO, Jason McCormick.

Submitted by: Phil Hofstetter, CEO
