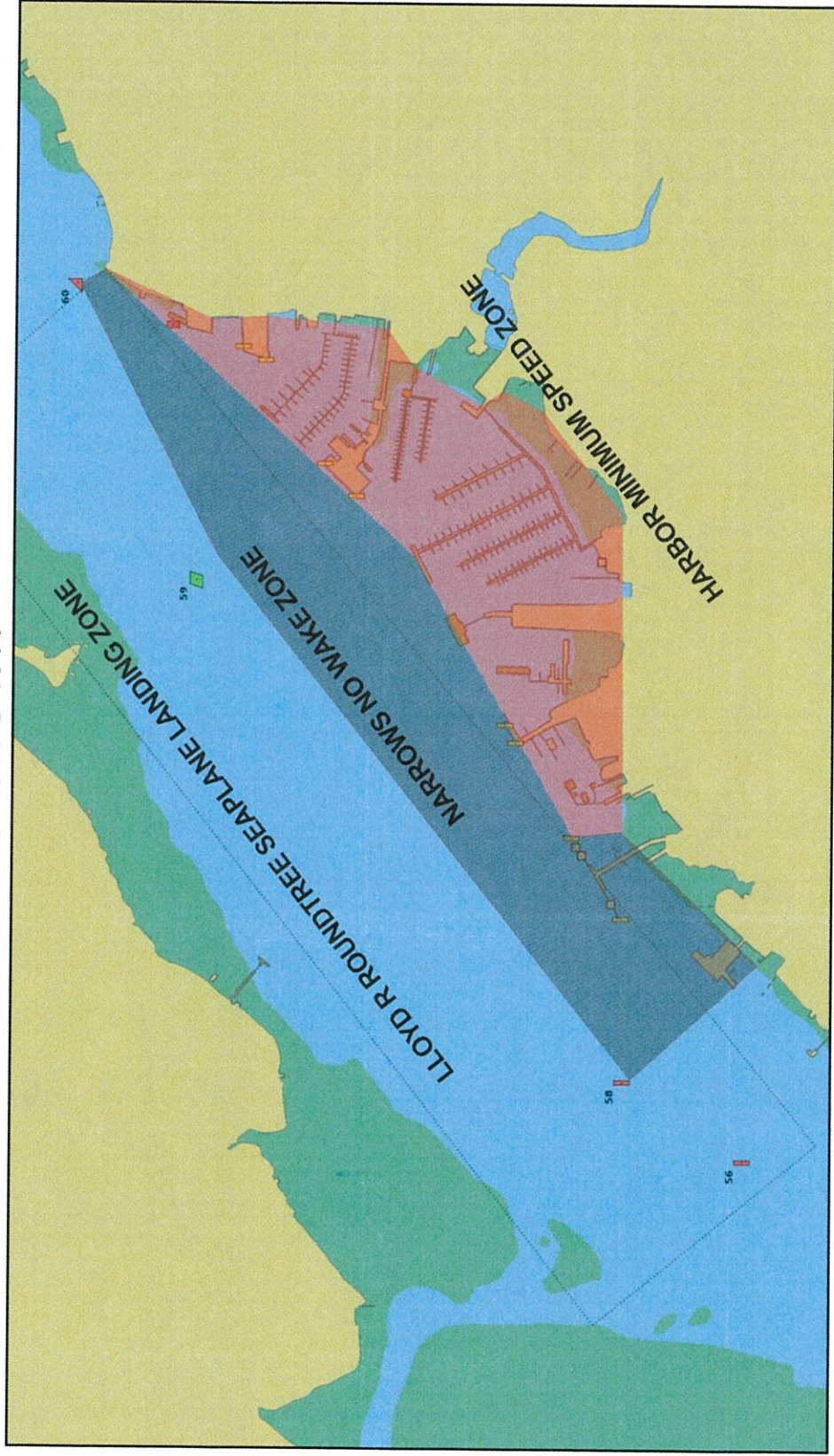


PORT AND HARBOR
PETERSBURG
ALASKA



**BOATERS ARE RESPONSIBLE FOR WAKES THAT MAY CAUSE DAMAGE TO OTHER VESSELS,
WATERFRONT FACILITIES, AND SEAPLANES LANDING IN THE FAA DESIGNATED LANDING ZONE.
ENFORCED BY PETERSBURG BOROUGH CHAPTER 14.20.30, ORDINANCE 2023-07**

