



Petersburg Medical Center

CEO Board Report July 2024

Mission Statement: Excellence in healthcare services and the promotion of wellness in our community.

Guiding Values: Dignity, Integrity, Professionalism, Teamwork, Quality

Highlights:

- July signals the start of the fiscal year (FY25) and year (2) of PMC Strategic Plan.
- PMC received notification that was awarded the State of Alaska Adult Day Program (3) year grant for \$149k and the State Opioid settlement (3) year grant for \$140k. There are 6 pending grants including Senator Murkowski's appropriation list for \$3M. Full grants detail provided in packet.
- Rep. Mary Peltola will arrive in Petersburg for a schedule tour of the PMC- old facility and new site on Aug.10th.
- Steel has arrived at the New Facility site for the WERC building.
- Registration is open for the 2024 Pedal/Paddle on July 27. Please show your support for this annual fundraiser by participating and/or donating to this fun event. PMC's goal is to raise \$24,000 in 2024. Register here: <https://www.pmcak.org/paddle-battle-registration.html>.

Join the PMC Foundation in supporting continuing education for staff & scholarships for high school seniors!



Pedal/Paddle Battle

SCOW BAY TO SANDY BEACH

Saturday, July 27th
Start at Scow Bay
Paddlers @ 09:30 / Pedalers @ 11:00
BBQ & Prize Drawings at Finish

Register and/or Donate www.pmcak.org

Registration

- Kayaks, Canoes, SUPs, & Bikes welcome!
- www.pmcak.org to register
- \$20 registration (free for kids under 12)

Participant & Sponsor Drawing

- Participants entered for getting sponsors
- Sponsors entered by donating

HUGE PRIZES!

- AK Airlines Tickets
- Mountain Bike
- Rumpl Puffy Blanket



Financial Wellness: Goal: To achieve financial stability and sustainability for the hospital.

FY23 Benchmarks for Key Performance Indicators (KPIs): Gross A/R days to be less than 55, DNFB < then 5 days, and 90 Days Cash on Hand

Accounts Receivables (AR) Update

Meetings with the HRG/ Trubridge executive leadership occurred June 19th and on July 5th to discuss the increasing Accounts Receivables (AR) which still hovering around 80 days. The revenue cycle team continues to work on improving this metric with a target of 55

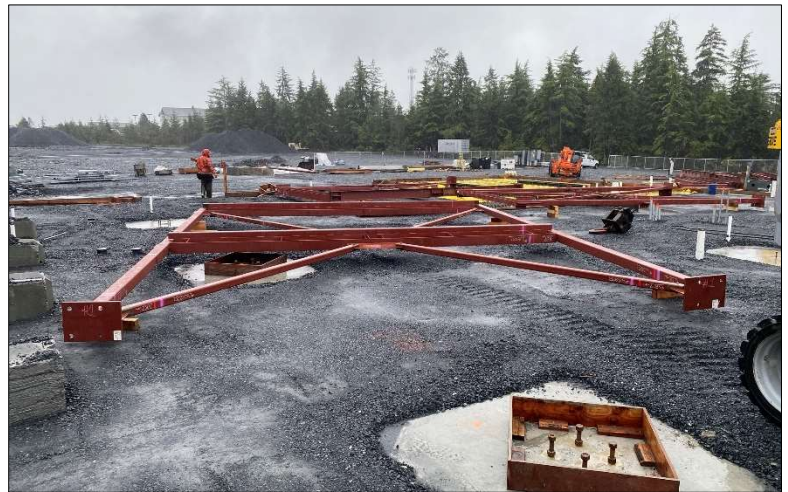


days. A detailed list of issues and expectations provided by the finance team. I anticipate another meeting on Tuesday July 23rd for their performance improvement plan. Applications were received on the position posted to begin the process of these functions internally. We are actively changing our approach to bring more billing in-house.

The finance packet includes the full FY24 year end and the Resource Committee would be reviewing this on the Wed July 24th. The finance team is starting the process to prepare for the FY24 full audit. As mentioned above the grants received for FY25 in both new and continuation (program grants only excluding capital) exceed \$700k for FY25.

New Facility: Goal: To expand the capacity and capabilities of the community borough-owned rural hospital through the construction of a new facility, while taking into account the needs and priorities of the local community. Arcadis submitted the update on the new facility and we are on track and on budget for the WERC building.

- Site Preparation: Site preparation is complete for the full 4.9 acres of wetlands permitting.
- Progress on WERC Building: Progress continues on the WERC building. Footers and foundations was poured, retaining wall is up and steel has arrived.
- Updates: Project updates are available on the PMC website under the “New Facility & Planning” tab.
- Tour of the Sites: Tours of the site for board and staff will begin next Friday July 26th at 5:30pm. This will be available for the community to sign up on a weekly basis throughout August, TBA.



- Senator Murkowski Appropriations: PMC made the list for \$3M, which needs approval but is an important nod to the continued support of the project.
- Lead-Up to State Capital Budget, Governor’s Budget, and State Bond: PMC will need to continue advocating as the #1 federal and state priority for next FY. This advocacy absolutely helps us secure grants and funding.

Workforce Wellness: Goal: To create a supportive work environment and promote the physical and mental well-being of hospital staff, in order to improve retention rates and overall productivity.

- The PMC newsletter for Q2 was sent out and available online with a great highlights of the quarter, thanks to Julie Walker.
- HR and PR will be working on a campaign to increase our visibility for jobs in Southeast as well as in Anchorage and Fairbanks. Turnover rate for PMC in FY 24 was 18% down from the previous year but the vacancy rates are high in specific areas that we will need a fresh approach and focus to improve for FY25.
- Employee engagement efforts this month included the new internal newsletter Cyndi Newman in HR creates (excerpt image below) and monthly CEO office hours.



CONGRATULATIONS TO:

- o Kaitlin & Josh Rathman on the birth of their daughter, Lainey Brooke on June 27th



Josh and Henry with Lainey



Lainey, Kaitlin, Josh

KINDER SKOG - MUD DAY, JUNE 27TH!

PMC's Kinder Skog Mud Day! The Kinder Skog staff enjoying the fun.



Noah, Nicole and Aimee with Kinder Skog youth



Damon and Aimee



Staff ready for the Mud Day experience

Community Engagement: Goal: To strengthen the hospital's relationship with the local community and promote health and wellness within the community.

- July 1: PMC reported out at the Borough Assembly meeting and the Borough Assembly.
- June 27 & July 25: KFSK Radio PMC Live.
- July 27: Save the date for the PMC Foundation's Pedal/Paddle Battle. At this annual event, participants bike or paddle from Scow Bay to Sandy Beach to raise funds to support staff education and HS scholarships. [Register](#) on the PMC website.

Patient-Centered Care and Wellness: Goal: To provide high-quality, patient-centered care and promote wellness for all patients.

- On July 18th Kinderskog had its first site visit for accreditation of the American Camps Association for Kinderskog and ORCA Camp each with their own accreditation. This is quite a process and want to commend Katie Holmlund for putting all the work into this as it is a process. We will hear back this fall if we are accredited. Photos show the site visit (which happened during spirit week).



- Volumes have rebounded in May and into June with summer influx of ER and Acute Care stays that continued on into July. Inpatient admissions saw the largest increase in June in the past 2 years. Swingbed and LTC also saw census increases, Home Health was stable and primary care was down slightly in June.
- The newsletter highlighted a few of PMC's expanded access through telehealth programs. It is exciting to see healthcare transform to deliver care and also retain our quality staff through technology.
- LTC staff do such an incredible job with our residents and the care of residents. The newsletter highlighted these great activities.

**CONTINUOUS IMPROVEMENT
Branching Out: PMC Expands Healthcare Reach with Telehealth Innovations**

In keeping with national healthcare trends, Peterburg Medical Center (PMC) has embraced telehealth to extend patient access to specialized care, enhancing outcomes and convenience. PMC's primary care clinic serves as the sturdy back of in-person patient care, from which technological advancements have sprouted telehealth branches to support patients in new and innovative ways. Technology has allowed some of our skilled and knowledgeable local providers to continue serving Peterburg even when life changes have put physical distance between them and the facility.

Telehealth enables PMC to deliver healthcare services through digital communication: remote consultations and coordinated care. Utilizing PMC's advanced Care electronic medical record system fosters streamlined, secure communication, facilitates transitions between primary care and specialty services, and ensures encrypted yet efficient information sharing, ultimately enhancing the quality of in-person care.

Dr. Jennifer Hyer, a seasoned primary care physician at PMC, has taken a sabbatical from her full-time role to embark on a global sabbatical adventure with her family. During this time, she finished a two-year fellowship in Integrative Medicine, which she now offers part-time as part of PMC's telehealth services. Dr. Hyer provides remote virtual consultations while traveling, combining conventional and complementary therapies to promote holistic patient wellness. Her personalized approach includes recommendations for nutrition, exercise, mind-body practices, and supplements, tailored to each patient's unique needs.

PMC's commitment extends further with the inclusion of remote behavioral health clinician, Pat Sessa, LCSW, who integrates behavioral health into primary care, addressing the interconnectedness of mental and physical health in collaboration with primary care providers. Pat is also a resource available to the PMC staff. Additional remote care team members, Amy Holte, RN, CDE, Nurse Case Manager and Brandi Boggs, Patient Navigator, and Jen Ray, Patient Benefits Coordinator work remotely to help ensure patients are supported as they navigate complex medical conditions or need support in completing assistance applications or navigating complicated healthcare systems.



▲ Dr. Hyer with Dr. Andrew Hest at the conclusion of her two-year Integrative Medicine Fellowship in Arizona.



▲ Thanks to telehealth, Brandy Boggs, Patient Navigator is able to continue to helping Peterburg residents navigate complex healthcare and assistance programs after relocating.

The Petersburg Pilot wrote a story on LTC resident Ron Hall's art show.

Artist residing in Long Term Care spreads joy through colorful paintings

Aiden Luhr | Jul 18, 2024



Aiden Luhr / Petersburg Pilot

Photographer turned painter Ron Hall shows one of his acrylic paintings at the Petersburg Medical Center, on July 15.

LONG TERM CARE UPDATE Summer Outings and New Activities

Spring at PMC's Long Term Care has been vibrant with activities, setting the stage for an exciting summer ahead. Residents eagerly anticipate more outings and community events in the coming months.

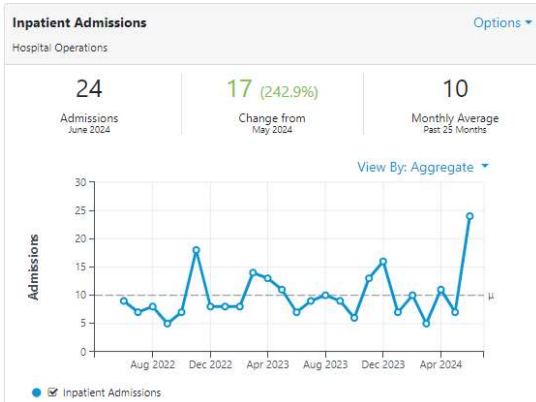
In May, residents enjoyed a delightful outing to the Little Norway festhous downtown. Despite the weather, the first picnic of the year on Memorial Day was a resounding success, thanks to a cozy fire and delicious food. We extend our gratitude to the community for their support and the volunteers whose efforts made the event possible.

Residents have relished visits to the KFSK radio station and the Parks and Recreation swimming pool. They've actively participated in hosting a radio show titled "High Country—Listen to Your Elders," where they contribute announcements and select music both remotely and in-person at the station. These activities have been enriching experiences, and we appreciate the support of KFSK and Petersburg Parks and Recreation in accommodating our residents.

Looking ahead, we're excited to announce Ron Hall's upcoming art show at the Clausen Memorial Museum. Ron, a talented resident, will showcase his canvas and acrylic paintings from July 22nd to 31st, with an Opening Reception on Friday, July 19th at 5pm. Please join us in celebrating Ron's artistic achievements.

Within our facility, residents have been enjoying our new Bingo program, a lively combination of bingo and exercise set to upbeat music. Additionally, there has been a revitalization of the Vespers program, fulfilling a request from our residents, thanks to the Petersburg Ministerial Association's support. Live music remains a highlight with local artists performing weekly. If you're interested in sharing your musical talents, please contact Alice at 907.772.5747 to join our lineup of musical guests.

PMC's Long Term Care continues to thrive with engaging activities and community involvement, making every season special for our residents.



Submitted by: Phil Hofstetter, CEO



Petersburg Medical Center

2024 GRANT PROPOSALS

Updated July 16, 2024

5 Grant Awards to Date: \$409,058 in FY25 + \$585,366 over FY26-27

◆ **ACF Summer ORCA Camps**

Provide three day camps for Petersburg youth and launch the first overnight kayak camp for teens.

1 Year | \$20,000 awarded

◆ **PCF Teen Mental Health First Aid**

Train PMC staff to be certified as facilitators of the evidence-based tMHFA prevention curriculum.

1 Year | \$9,260 awarded

◆ **SBHA School-Based Health Services Grant**

Partnership to provide School Nurse & Behavioral Health supports for PCSD K-12 students.

1 Year | \$87,115 awarded

Will fund: **0.85 FTE** across **3 positions** in Primary Care / BH; and **\$4,148** in PMC indirect costs.

◆ **State DPH Division Opioid Settlement Funds Grant**

Sustain telepsychiatry access pilot program established by PMC's 2023 HRSA grant.

3 Years | \$142,828 annually

Will fund: **0.9 FTE** across **3 positions** (PC/BH & Grants Director); and **\$18,630** in PMC indirect costs.

◆ **State SDS Division Adult Day Services Grant**

Support for Cedar Social Club staffing and over \$33K per year in scholarships for participants.

3 Years | \$149,855 annually

Will fund: **1.0 FTE** across **4 positions** in Home Health; and **\$13,623** in PMC indirect costs.

6 Pending Grant Requests: \$9.7 million, FY25-FY29

◆ **Denali Commission Basic Infrastructure Grant**

New Medical Center & Long Term Care facility remaining costs through Phase 3.

1 Award | \$2,000,000 total requested – *Pending: decision expected July 2024*

◆ **GCI Suicide Prevention Grant**

Provide outreach materials, workbooks, and supplies for community suicide prevention trainings.

1 Year | \$7,000 total requested – *Pending: decision expected July 2024*

◆ **OASH Community Level Innovations Grant**

Collaboration to address colorectal cancer and hypertension health disparities.

4 Years | \$555,600 annually – *Pending: decision expected August 2024*

◆ **SAMHSA Strategic Prevention Framework Grant**

Collaboration to develop community substance use and suicide prevention priorities.

5 Years | \$375,000 annually – *Pending: decision expected August 2024*

- ◆ **Senate Appropriations Congressionally Directed Funds (Sen. Murkowski)**
New Medical Center & Long Term Care facility remaining costs through Phase 3.
1 Award | \$3,000,000 total requested – *Pending: decision expected Fall 2024*
- ◆ **US Dept. Agriculture Distance Learning and Telemedicine Grant**
Equipment and software supporting telemedicine & workforce development goals.
1 Award | \$640,148 total requested – *Pending: decision expected August 2024*

5 Continuing Multi-Year Grant Awards

- ◆ **ACL Communities Deliver & Sustain Evidence-Based Falls Prevention**
Provides two evidence-based falls prevention programs to older adults, people with disabilities, and others with mobility challenges, both in person and through telehealth; and connects eligible community members with available in-home services & other care at PMC.
Year 2 of 4 | \$549,327 awarded total
Currently funding: **0.85 FTE** across **3 positions** in Community Wellness & Home Health Program housed in: Community Wellness
- ◆ **AHHA Facility-Led Workforce Initiative Funding**
Provides financial support for Community Wellness youth programs, specifically expansion of summer camps, and behavioral health and wellness supports for PMC personnel.
Year 2 of 2 | \$52,992 awarded Year 2
Program housed in: Community Wellness
- ◆ **HRSA Congressionally Directed Spending: Community Project**
Contributes to New Medical Center & Long Term Care facility sitework and construction costs.
Awarded 2022 | \$8,000,000 awarded total
Project housed in: Finance
- ◆ **State DPH Division Community-Based Tobacco Prevention & Control Grant**
Implements the evidence-based Million Hearts® Change Package for Tobacco Cessation in the PMC health care systems change, by making tobacco cessation a practice and system priority and creating a supportive environment for cessation.
Year 2 of 3 | \$145,000 per year
Currently funding: **0.8 FTE** across **3 positions** in Community Wellness & Clinic; **\$13,050** in indirect Program housed in: Primary Care Clinic / Community Wellness
- ◆ **US Department of Treasury Coronavirus Capital Projects Fund Grant**
Constructs a 19,000 square foot Wellness, Education, and Resource Center (WERC) building adjacent to the New Medical Center & Long Term Care facility, which will include program space enabling community work, education and health monitoring.
Year 3 of 6 | \$20,000,000 awarded total
Project housed in: Finance

Submitted by: Katie McKay Bryson, Director Grants, Planning & Evaluation