



New Facility Construction Report March 2025

Sitework

Sitework has resumed and that activity will continue through the end of April. This will include final grading, landscaping, pouring concrete sidewalks, and a service driveway. Other exterior improvements will be done during this same time and should all be completed by May 1st or sooner.

WERC Building

The additional layer of exterior clad Rockwool insulation is nearly completed, and the metal siding is also nearly completed they are moving along in parallel. Painting in areas open to above is nearly completed, Otis has nearly completed the installation of the elevator which should be complete by the end of March and will be tested and certified on March 26th by the SOA, this will also include an inspection by the SOA FM for and testing the Fire Alarm system. Electrical, Communication, and Mechanical trim out is about 90% complete, and interior finishes are about 85% complete. Carpet and flooring are ongoing.

The MRI Addition steel structure has been erected and ETS Lindgren will soon begin to fabricate the RF Copper shield offsite for installation in May alongside the parts of the addition after framing is completed. The Siemens SOU chiller units and Power Conditioner are also scheduled to arrive in May, followed by the magnet in June, and should allow for the calibration and testing to be completed by July 1.

New Hospital Design

Further design progress is on hold pending grant funding. The Phase 5 wetlands permit is currently under review, approval can take 3-4 months and should have approval by May of this year.

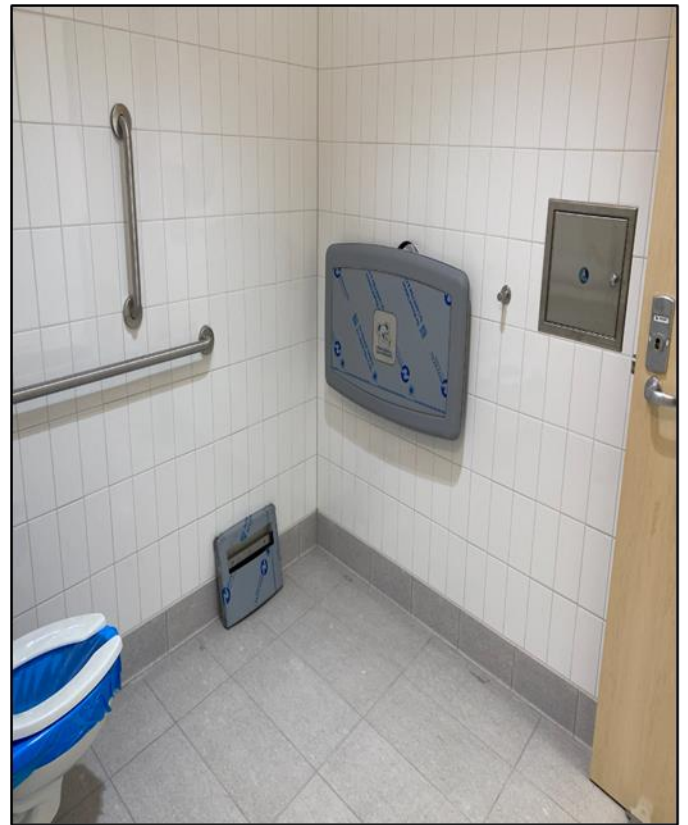
Upcoming Construction Activities (2-month look ahead)

- April – Exterior siding, Exterior concrete surfaces, Flooring, Fire Alarm, Mechanical and Electrical trim, MRI Addition steel and framing.
- May – Substantial Completion, Punch List, and MRI Addition, Final Exterior Improvements

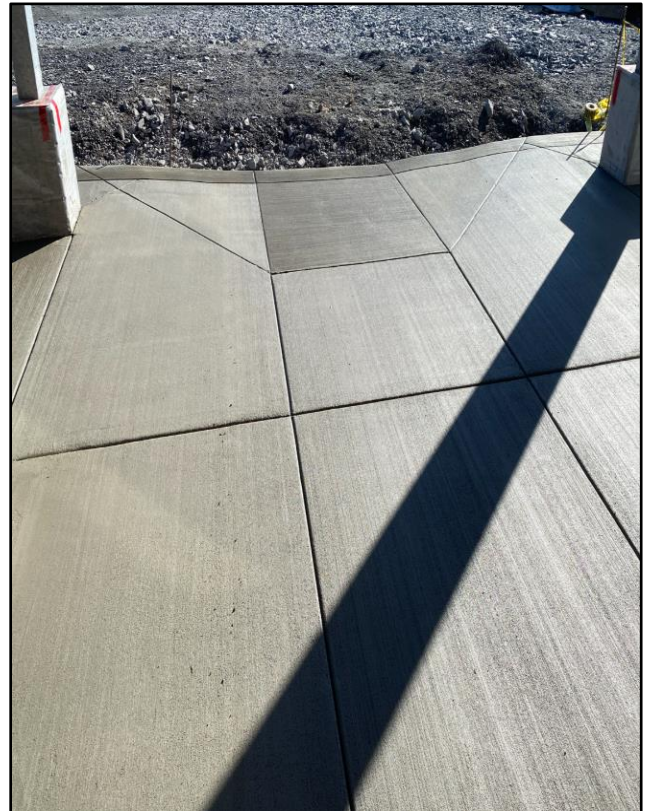
Budget

- WERC budget – \$22.7M
 - CCPF Treasury Grant – \$20M
 - HRSA Grant – \$2.7M
- Hospital Sitework & Design Budget up to 35% – \$5.3 M
 - HRSA Grant – \$5.3 M

Painting Open to Above and Bathroom Accessories Installation



Exterior Clad, MRI Addition Structure, and Entry Heated Slab



Submitted by: Justin Wetzel- Arcadis Project Manager