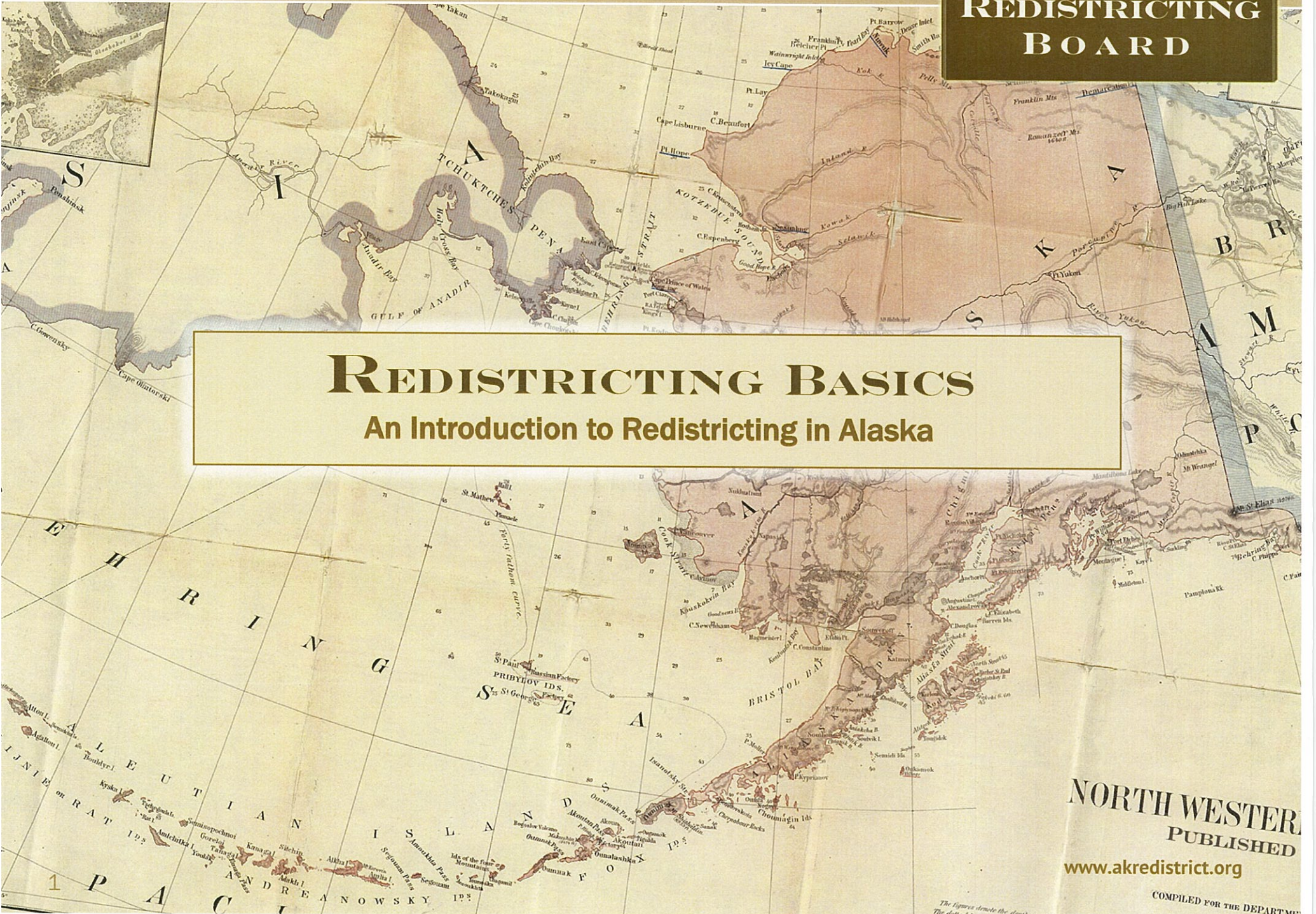


# ALASKA REDISTRICTING BOARD

## REDISTRICTING BASICS An Introduction to Redistricting in Alaska



NORTH WESTER  
PUBLISHED  
[www.akredistrict.org](http://www.akredistrict.org)  
COMPILED FOR THE DEPARTMENT



# **ALASKA'S PROCESS**

- **Voters approved Ballot Measure #3 in 1998 creating a 5-member independent Redistricting Board.**
- **Governor appoints 2 members**
- **Senate President 1 member**
- **House Speaker 1 member**
- **Chief Justice of the Supreme Court 1 member**
- **Members must represent various geographic areas of the State**
- **Members must be Alaska residents**
- **Members may not run for legislative office in the next cycle**
- **Board holds sole authority for drawing new legislative district maps and defending them in the Court system**

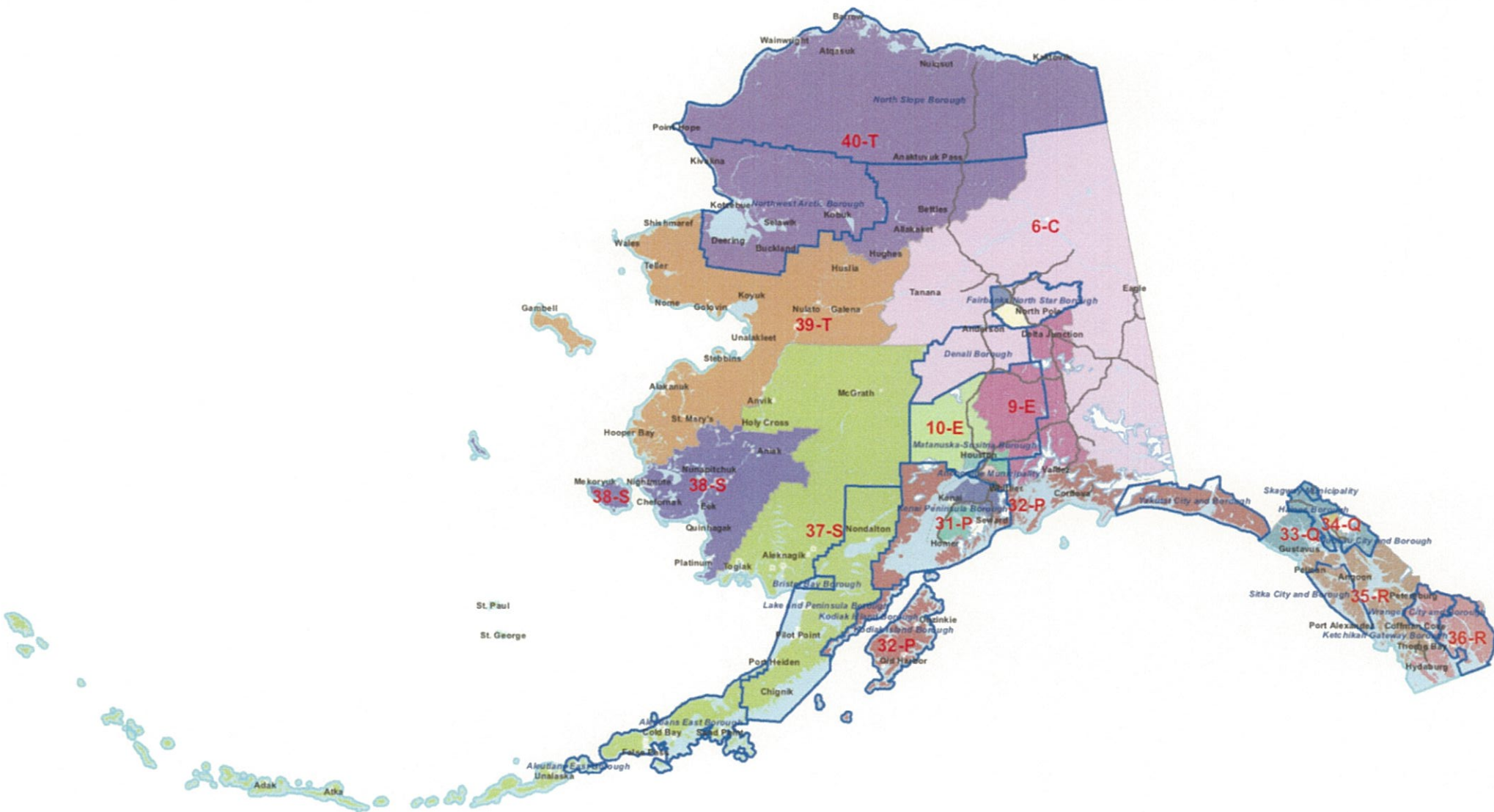


# **ALASKA'S BOARD**

- **The current Board was appointed and convened in August 2020**
- **Alaska Redistricting Board Members are:**
  - **John Binkley of Fairbanks, Chair**
  - **Melanie Bahnke of Nome**
  - **Nicole Borromeo of Anchorage**
  - **Bethany Marcum of Wasilla**
  - **Budd Simpson of Juneau**



## WHY CHANGE WHAT WORKS?





# **WHY REDISTRICT?**

- **The US and Alaska Constitutions' Equal Protection clauses require that each voter have as much influence over an election results as every other voter**
- **One person = One vote**
- **Legislative District lines are fixed, but Alaskans move frequently**



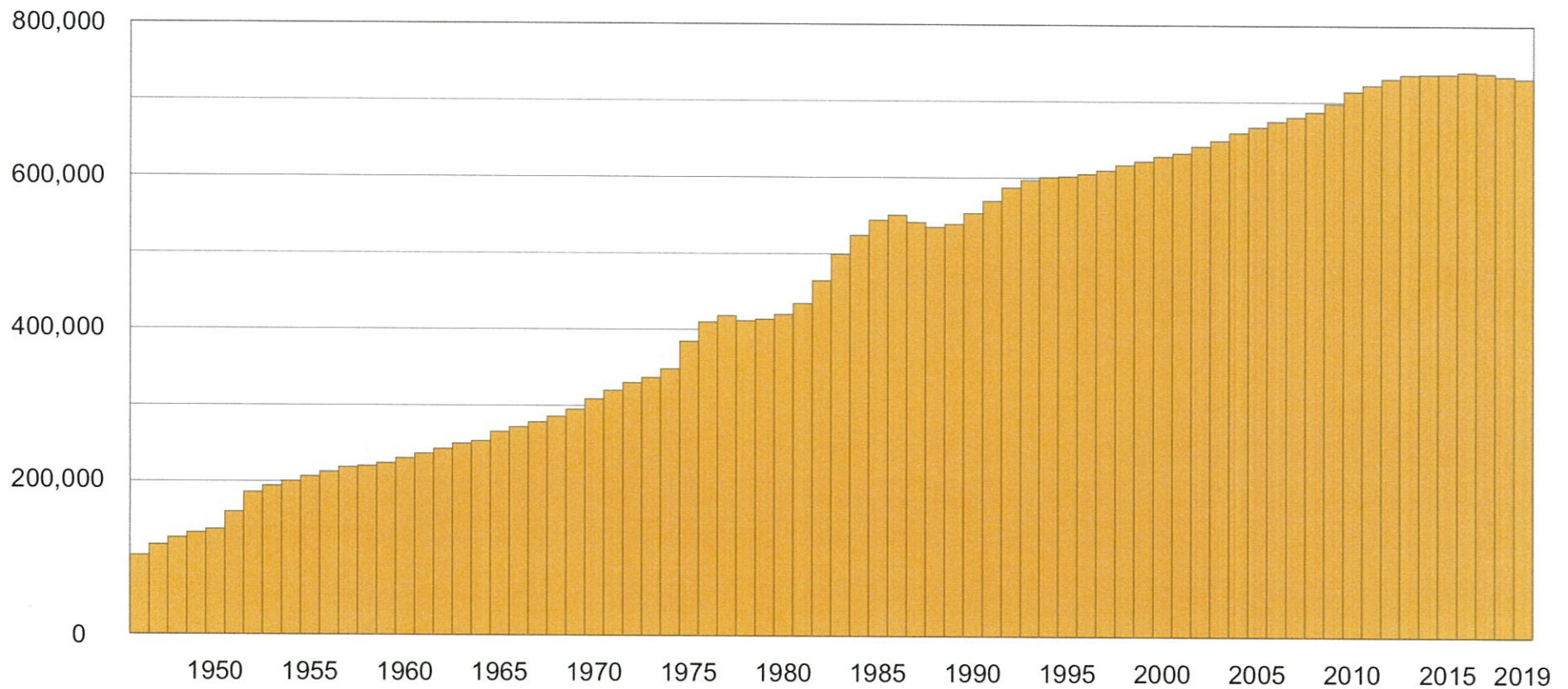
# **ALASKA CHURN**

- **In the past, in-migration and out migration spikes have driven change**
- **Now, only net population gain in recent years has been births**
- **Some areas churn more than others, for example**
  - **88% of Alaskans in the Bethel Census Area were born in Alaska**
  - **17% of population in the Aleutians West Census area were born in Alaska**



# ALASKA GROWS EARLY

Alaska Total Population, 1946 to 2019

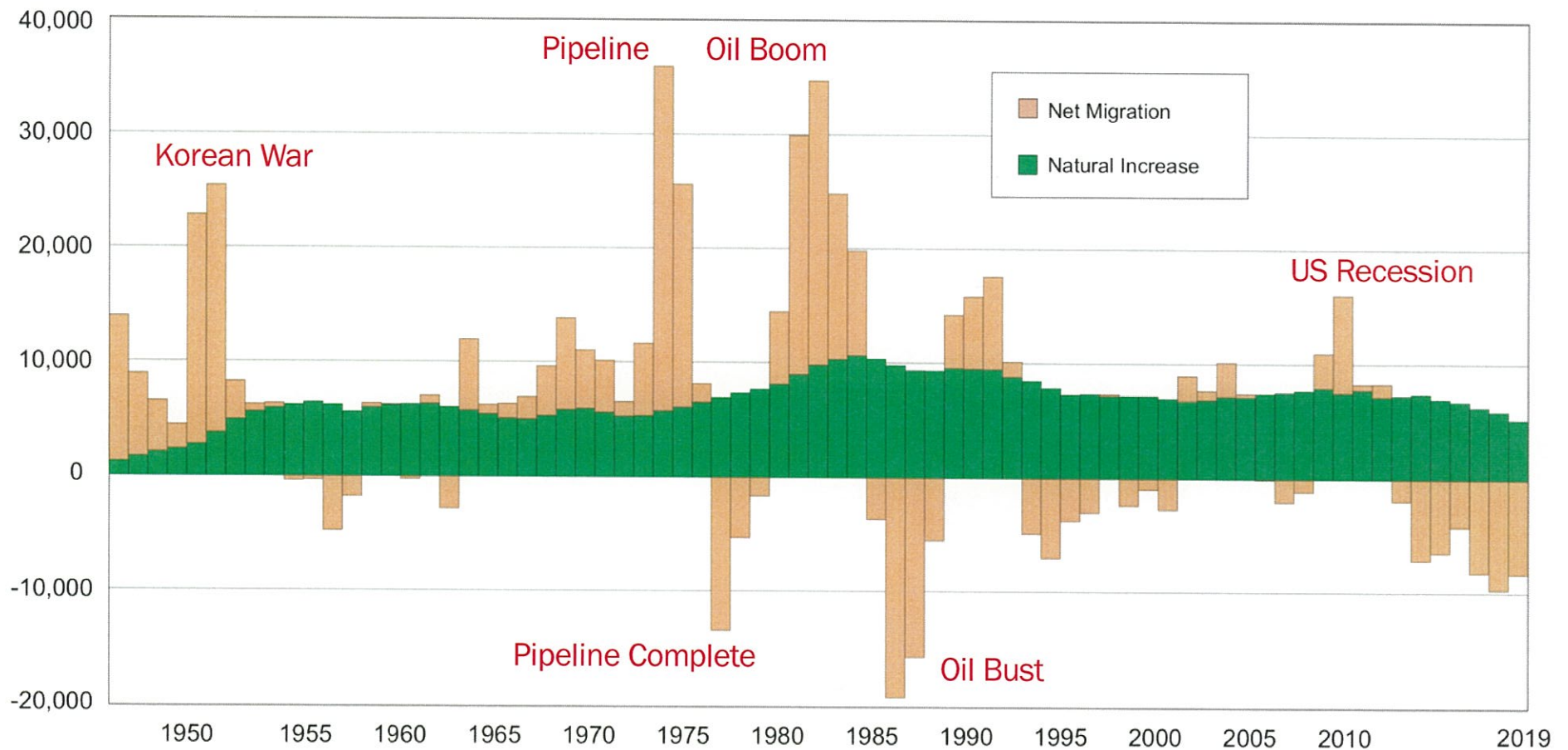


Source: Alaska Department of Labor and Workforce Development



# ALASKA CHANGES

Components of Population Change for Alaska, 1947 to 2019

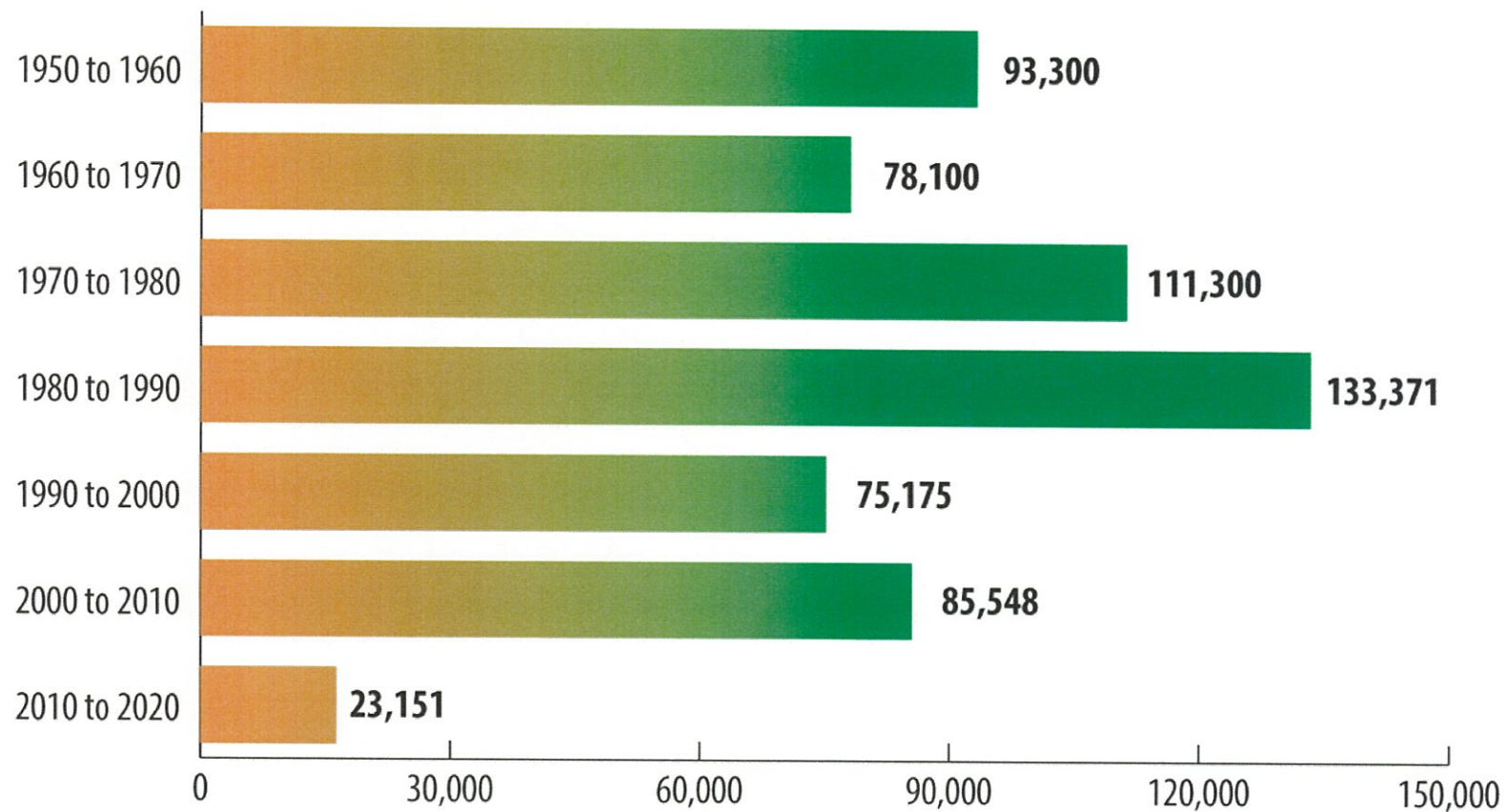


Source: Alaska Department of Labor and Workforce Development



# GROWTH COLLAPSES

## Alaska Population Change by Decade



Source: Alaska Department of Labor and Workforce Development



# CENSUS DELAYS

Nation/World

## Census Bureau says it won't deliver redistricting data until end of September

 Author: [Mike Schneider, Associated Press](#)  Updated: February 12  Published February 12

The U.S. Census Bureau said Friday it won't be delivering data used for redrawing congressional and state legislative districts until the end of September, causing headaches for state lawmakers and redistricting commissions facing deadlines to redraw districts this year.

Officials at the statistical agency blamed operational delays during the 2020 census caused by the pandemic.



# CENSUS DATA WHEN?

- **Feb 12<sup>th</sup>** Census notified states that Redistricting data should be “expected by September 30”
- **State of Ohio** sued Census over the delay until September
- **March 15**, the Census said it “recently determined” that data in the older format used in 2010 could be available by “mid-August”
- **April 15**, the Census says that initial data will be out August 16.
- **Census Info** page on [www.akredistrict.org](http://www.akredistrict.org) has actual emails

*\* September 30 is the currently published deadline, but data may be received sooner (days or weeks)*



# ALASKA CONSTITUTION

- **Alaska Constitution Article VI**

**§ 10. Redistricting Plan and Proclamation –**

(a) Within thirty days after the official reporting of the decennial census of the United States or thirty days after being duly appointed, whichever occurs last, the board shall adopt one or more proposed redistricting plans. The board shall hold public hearings on the proposed plan, or, if no single proposed plan is agreed on, on all plans proposed by the board. No later than ninety days after the board has been appointed and the official reporting of the decennial census of the United States, the board shall adopt a final redistricting plan and issue a proclamation of redistricting. The final plan shall set out boundaries of house and senate districts and shall be effective for the election of members of the legislature until after the official reporting of the next decennial census of the United States.



# **NORMAL CYCLE TIMELINE**

- **March 15, 2021: Census Redistricting Data received**
- **April 14, 2021: Proposed Plans Adopted**
- **June 13, 2021: Final Plans adopted**
- **July 13, 2021: Deadline for Litigation Filings**
- **July 13, 2021 – May 30, 2022: nearly a full year buffer for litigation**
- **June 1, 2022: Legislative Candidate Filing Deadline**



## 2021 LATE-AUGUST TIMING

- **August 24, 2021\*:** Census Redistricting Data received
- **September 23, 2021:** Deadline for Proposed Plans to be Adopted
- **November 22, 2021:** Deadline for Final Plan to be Adopted
- **December 22, 2021:** Deadline for Litigation Filings
- **Dec. 22 – June 1, 2022,** allows a max five month litigation window
- **June 1, 2022:** Legislative Candidate Filing Deadline

*\* August 24 is for example only. No fixed date has yet been announced by the Census Bureau*



## 2021 SEPT. 30 TIMING

- **September 30, 2021\*:** Census Redistricting Data received
- **October 30, 2021:** Deadline for Proposed Plans to be Adopted
- **December 29, 2021:** Deadline for Final Plan to be Adopted
- **January 28, 2021:** Deadline for Litigation Filings
- **Jan. 28 – June 1, 2022,** allows a max four month litigation window
- **June 1, 2022:** Legislative Candidate Filing Deadline

*\* September 30 is the currently published deadline, but data may be received sooner (days or weeks)*

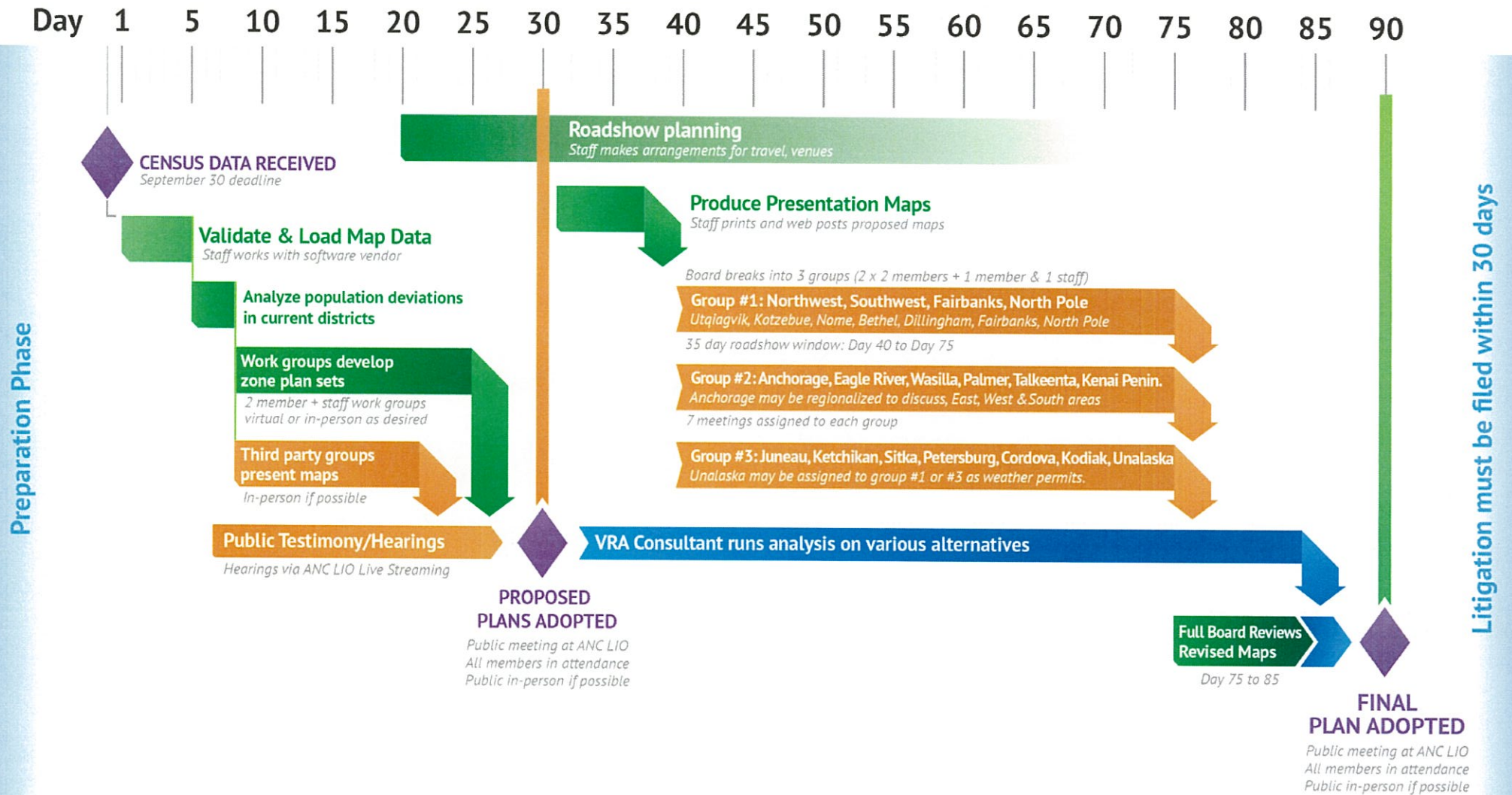


## 2021 SEPT. 30 TIMING

- September 30, 2021\*: Census Redistricting Data received
- October 30, 2021: Deadline for Proposed Plans to be Adopted
- December 29, 2021: Deadline for Final Plan to be Adopted
- January 28, 2021: Deadline for Litigation Filings
- **Jan. 28 – June 1, 2022, allows a max four month litigation window**
- June 1, 2022: Legislative Candidate Filing Deadline

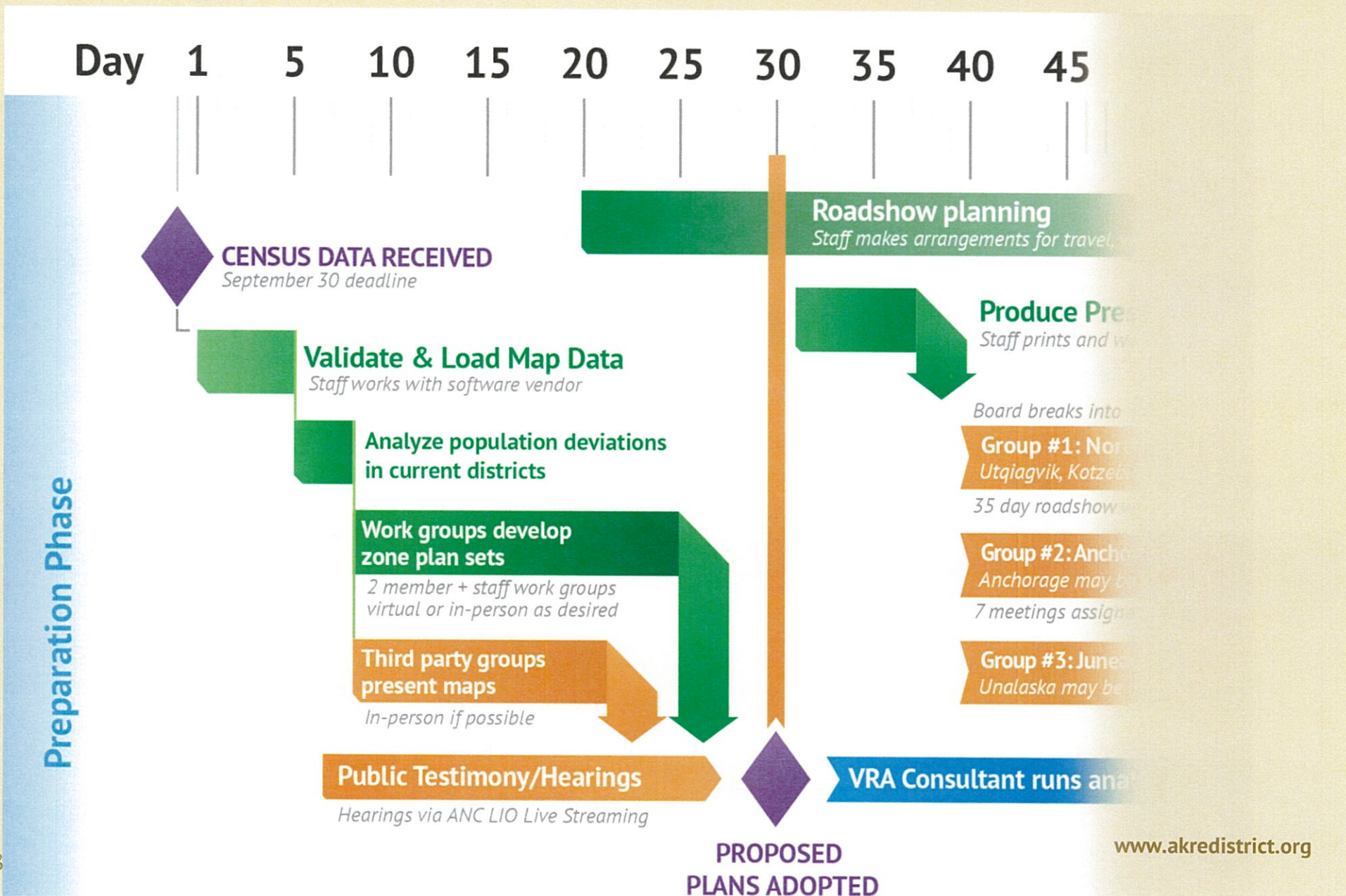


## DRAFT TIMELINE DETAIL





# DRAFT TIMELINE DETAIL





# DRAFT TIMELINE DETAIL

30 35 40 45 50 55 60 65 70 75 80 85 90

**Roadshow planning**

*Staff makes arrangements for travel, venues*

**Produce Presentation Maps**

*Staff prints and web posts proposed maps*

*Board breaks into 3 groups (2 x 2 members + 1 member & 1 staff)*

**Group #1: Northwest, Southwest, Fairbanks, North Pole**

*Utqiagvik, Kotzebue, Nome, Bethel, Dillingham, Fairbanks, North Pole*

*35 day roadshow window: Day 40 to Day 75*

**Group #2: Anchorage, Eagle River, Wasilla, Palmer, Talkeenta, Kenai Penin.**

*Anchorage may be regionalized to discuss, East, West & South areas*

*7 meetings assigned to each group*

**Group #3: Juneau, Ketchikan, Sitka, Petersburg, Cordova, Kodiak, Unalaska**

*Unalaska may be assigned to group #1 or #3 as weather permits.*

**VRA Consultant runs analysis on various alternatives**

**Full Board Reviews  
Revised Maps**

*Day 75 to 85*

**FINAL  
PLAN ADOPTED**

**PROPOSED  
PLAN ADOPTED**  
*Meeting at ANC LIO  
Members in attendance  
1 person if possible*



# **THIS CYCLE IS UNIQUE**

- **Less than a single Alaska House seat in total population growth**
- **2000 legislative district target was 15,700**
- **2010 legislative district target was 17,756**
- **2020 Census count: 733,391: District target will be 18,355**
- **COVID delays introduce uncertainty into Census reporting timing**
- **Candidates may file for office before Census data is available or any new maps have been drawn**
- **Possible that candidate will file for District X, but will end up in District Y once population changes are accounted for**
- **Board keenly aware of this challenge, but not at liberty to change timeline**
- **COVID may force virtualized road show**



# WEBSITE AVAILABLE

[www.akredistrict.org](http://www.akredistrict.org)



ALASKA MAP BY CHARLES SUMNER CIRCA 1867

## ANNOUNCEMENTS

### [Census Redistricting Data Delayed](#)

On February 12th the U.S. Census notified the Board that redistricting data will be provided no later than September 30, 2021, pushing the deadline for a final plan to late December. [See more U.S. Census Info >](#)

### [Redistricting Board Adopts Policies](#)

In public meetings on Dec. 29 and Jan. 26 the Board unanimously adopted a revised procurement code and suite of open meetings, records, compensation and travel policies. [See Board Policy Page >](#)

### [Alaska Redistricting Board Retains Key Staff](#)

Today the Alaska Redistricting Board is pleased to announce the hiring of Peter Torkelson as Executive Director and TJ Presley as Deputy Director. [Full Story >](#)

## GET INVOLVED

### Stay Informed

Signup for email updates to receive advanced notice of upcoming board meetings and activities. [Signup Now >](#)



### Make Your Voice Heard

Submit your comments on any map or matter under consideration by the board. Submissions become part of the public record and will be printed in the public comment section of the next Board Packet. A valid Alaska zip code is required. [Submit Public Comment Now >](#)



### Questions or Concerns?

Ask questions or share your concerns on any issue related to the board's redistricting work. [Ask a question or share a concern >](#)



## MAP GALLERY

### 2013 Statewide Proclamation

The current Alaska House districts have been in effect since the summer of 2013 and do not reflect the forthcoming census enumeration. [View Gallery >](#)

### Anchorage & Mat-Su Maps

See zoomed-in maps on Southcentral districts from the 2010 redistricting cycle. [View Breakout Maps >](#)

### Fairbanks & North Pole Maps

These maps for the Fairbanks/North Pole districts reflect the 2010 redistricting cycle. [View Breakout Map >](#)

### Southeast Alaska Maps

These maps reflect the 2010-2013 redistricting cycle and do not reflect the 2020 census information. [View Southeast Map >](#)

ANNOUNCEMENTS

MAP GALLERY

GOVERNING LAW

GET INVOLVED

CENSUS INFO

CONTACT US



## WEBSITE AVAILABLE

[www.akredistrict.org](http://www.akredistrict.org)

The screenshot displays the Alaska Redistricting Board website. At the top left, a header reads "ALASKA REDISTRICTING BOARD" with the years "2007 2010 2020 2010 2010" below it. A navigation menu on the left includes "ANNOUNCEMENTS", "GET INVOLVED" (circled in red with a hand cursor), and "MAP GALLERY". The main content area features a historical map titled "ALASKA MAP BY CHARLES SUMNER CIRCA 1867". Below the map are three columns of content:

- ANNOUNCEMENTS**
  - Census Redistricting Data Delayed**: On February 12th the U.S. Census notified the Board that redistricting data will be provided no later than September 30, 2021, pushing the deadline for a final plan to late December. [See more U.S. Census Info >](#)
  - Redistricting Board Adopts Policies**: In public meetings on Dec. 29 and Jan. 26 the Board unanimously adopted a revised procurement code and suite of open meetings, records, compensation and travel policies. [See Board Policy Page >](#)
  - Alaska Redistricting Board Retains Key Staff**: Today the Alaska Redistricting Board is pleased to announce the hiring of Peter Torkelson as Executive Director and TJ Presley as Deputy Director. [Full Story >](#)
- GET INVOLVED**
  - Stay Informed**: Signup for email updates to receive advanced notice of upcoming board meetings and activities. [Signup Now >](#) (Accompanied by an envelope icon)
  - Make Your Voice Heard**: Submit your comments on any map or matter under consideration by the board. Submissions become part of the public record and will be printed in the public comment section of the next Board Packet. A valid Alaska zip code is required. [Submit Public Comment Now >](#) (Accompanied by a megaphone icon)
  - Questions or Concerns?**: Ask questions or share your concerns on any issue related to the board's redistricting work. [Ask a question or share a concern >](#) (Accompanied by a question mark icon)
- MAP GALLERY**
  - 2013 Statewide Proclamation**: The current Alaska House districts have been in effect since the summer of 2013 and do not reflect the forthcoming census enumeration. [View Gallery >](#)
  - Anchorage & Mat-Su Maps**: See zoomed-in maps on Southcentral districts from the 2010 redistricting cycle. [View Breakout Maps >](#)
  - Fairbanks & North Pole Maps**: These maps for the Fairbanks/North Pole districts reflect the 2010 redistricting cycle. [View Breakout Map >](#)
  - Southeast Alaska Maps**: These maps reflect the 2010-2013 redistricting cycle and do not reflect the 2020 census information. [View Southeast Map >](#)

At the bottom, a secondary navigation menu includes "ANNOUNCEMENTS", "MAP GALLERY", "GOVERNING LAW", "GET INVOLVED" (circled in red with a hand cursor), "CENSUS INFO", and "CONTACT US".



# WEBSITE AVAILABLE

[www.akredistrict.org](http://www.akredistrict.org)

## GET INVOLVED

The best way to get involved is to sign up for our notification email service which will alert you in advance of all board meetings, upcoming events, significant dates or breaking news which affects the redistricting effort in Alaska. You may choose your alert level to suit your priorities.

**First Name \***

John

**Last Name \***

Smith

**Email Address \***

john@smith.com

**Alert Level \***

- Board Meeting Notices
- Significant Dates
- News that Affects Redistricting

**Comments**

Thanks for keeping me informed!

Submit



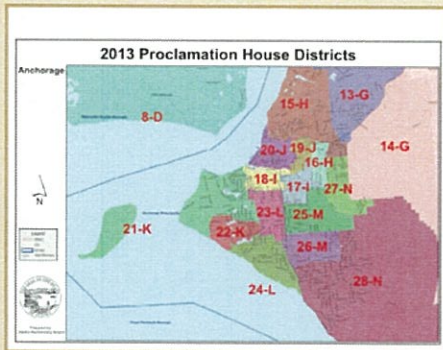
# WEBSITE MAPS

ALASKA  
REDISTRICTING  
BOARD

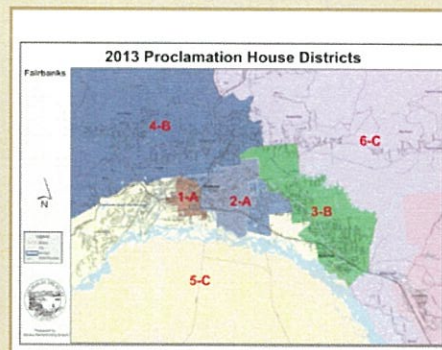
## MAP GALLERY

The [2013 Redistricting Board Proclamation](#) maps currently define Alaska legislative districts statewide. These reflect the 2010 U.S. Census enumeration of 710,200 Alaskans for an ideal district population of 17,755.

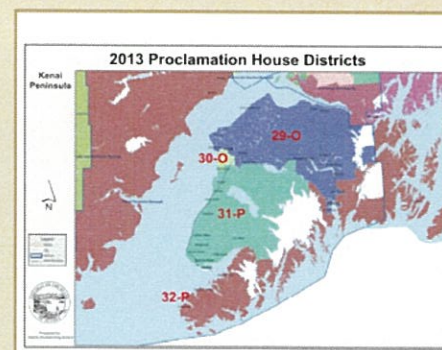
*Click an image or map title for hi-resolution PDF file. Right click and choose "Download linked file as..." to download and save PDF for off-line reference.*



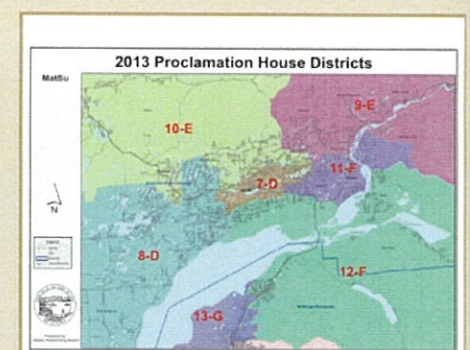
[2013 Proclamation Anchorage](#)



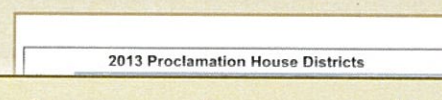
[2013 Proclamation Fairbanks](#)



[2013 Proclamation Kenai](#)



[2013 Proclamation MatSu](#)



<https://www.akredistrict.org/map-gallery/>



# ALASKA REDISTRICTING BOARD

## THANK YOU

Please reach out to ask questions or share concerns

[peter.torkelson@akredistrict.org](mailto:peter.torkelson@akredistrict.org)

[tj.presley@akredistrict.org](mailto:tj.presley@akredistrict.org)

907-563-0300

NORTH WESTER  
PUBLISHED

[www.akredistrict.org](http://www.akredistrict.org)

COMPILED FOR THE DEPARTMENT