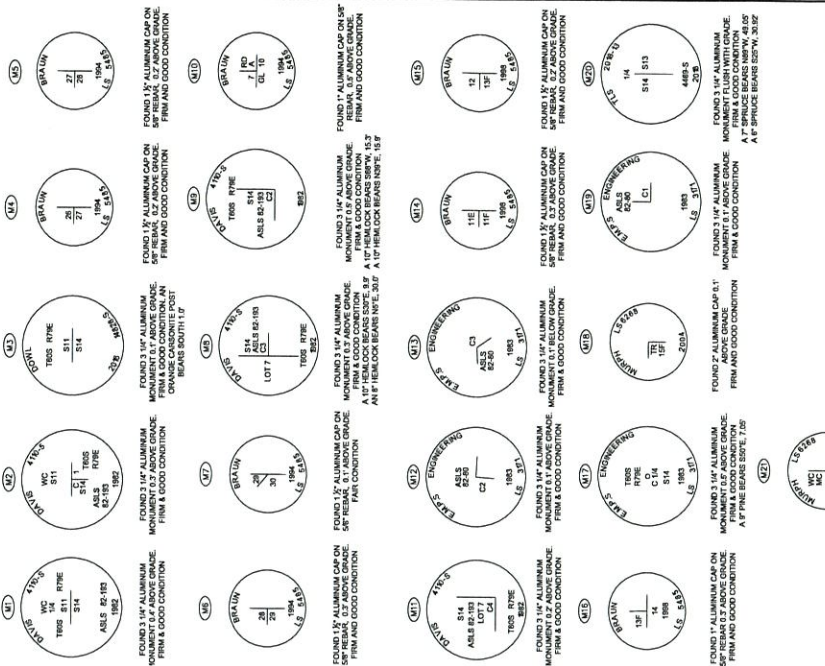


FOUND MONUMENTS



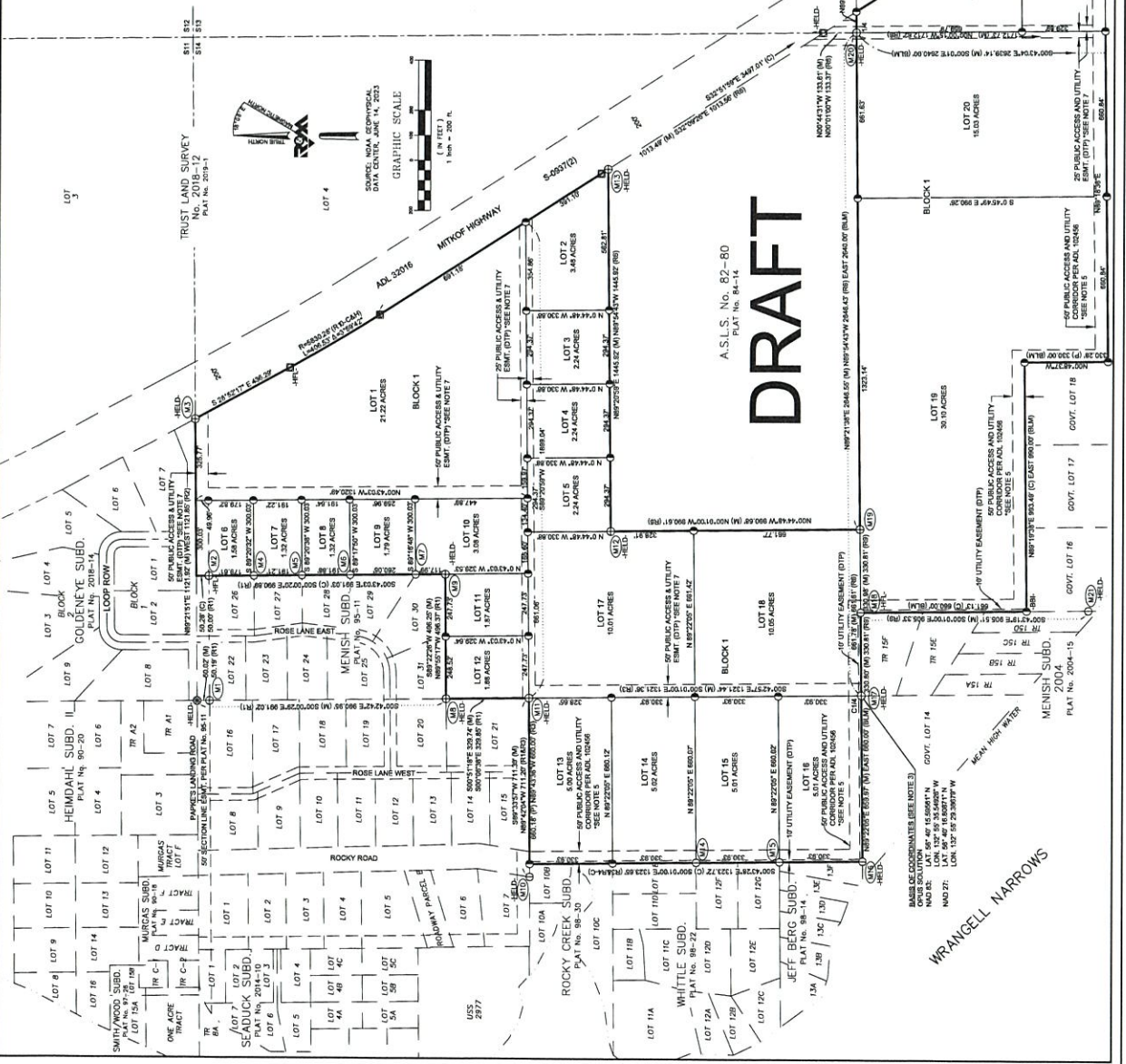
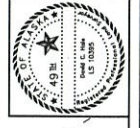
TRUST LAND SURVEY 2021-02
SOUTH MITKOF SUBDIVISION
 CREATING LOTS 1 THRU 30 IN BLOCK 1, LOTS
 1 THRU 34 IN BLOCK 2, LOTS 1 THRU 21 IN
 BLOCK 3, AND LOTS 1 THRU 15 IN BLOCK 4

A SUBDIVISION WITH PORTIONS OF
 SECTION 13, LOT 1, AND NE1/4
 SECTION 14, NE1/4, E1/2, NW1/4, NW1/4, NE1/4, NW1/4, AND
 SECTION 24, NW1/4, NW1/4, E1/2, NW1/4, NW1/4, NE1/4, NW1/4,
 SECTION 24, NW1/4, NW1/4, E1/2, NW1/4, NW1/4, NE1/4, NW1/4,
 WITHIN TOWNSHIP 09 SOUTH, RANGE 79 EAST, COCKER RIVER MERIDIAN, ALASKA
 CONTAINING 384.8 ACRES, MORE OR LESS. PETERSBERG RECORDING DISTRICT

910 Vineyard Drive, Anchorage, Alaska 99507
 (907) 342-3121
 www.mccormick.com

DATE: 03/07/2021
 RECD: 03/09/2021
 FILE NO.: 2850.02
 FILE NO.: 2021-02

DRAWN BY: DCH SCALE: 1"=200'
 SHEET 2 OF 5

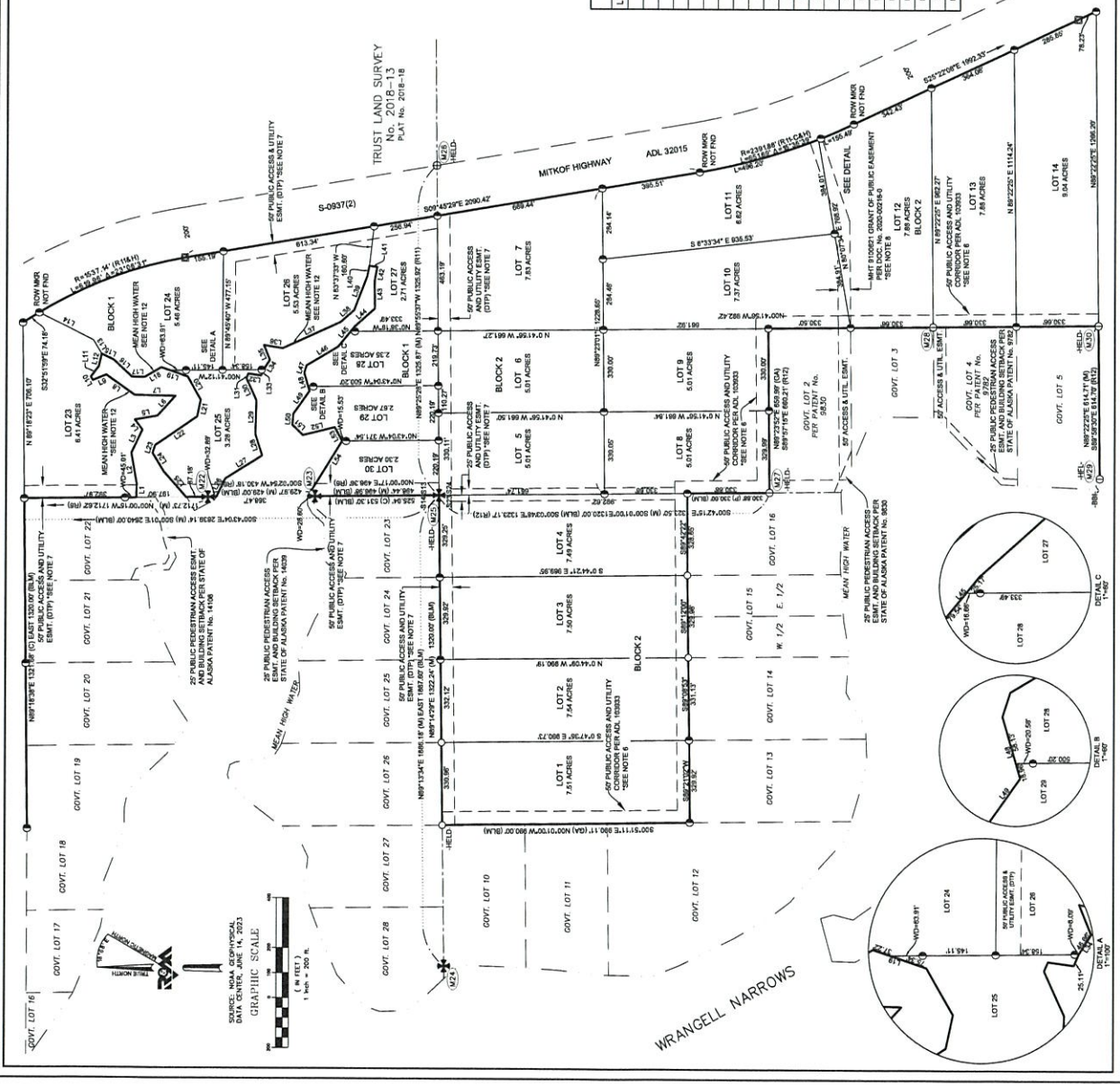
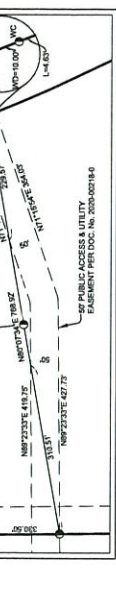
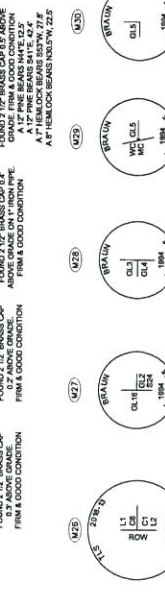
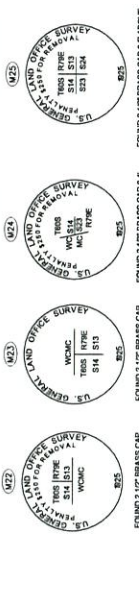


DRAFT

A.S.L.S. No. 82-80
 PLAT No. 84-14

WRANGELL NARROWS

FOUND MONUMENTS



PLAT OF
 TRUST LAND SURVEY 2021-02
 SOUTH MITKOF SUBDIVISION
 CREATING LOTS 1 THRU 30 IN BLOCK 1, LOTS
 1 THRU 34 IN BLOCK 2, LOTS 1 THRU 21 IN
 BLOCK 3, AND LOTS 1 THRU 15 IN BLOCK 4
 A SUBDIVISION WITH PORTIONS OF
 SECTION 13, LOT 1 AND M28A
 SECTION 14, MEAS. EXEMPTED, HINCHUCKA, MIDWINTER, LUMMINNER AND
 SECTION 24, HINCHUCKA AND MIDWINTER
 SECTION 24, CIVILIAN, MERRILL, EXEMPTED, AND 39R
 SECTION 24, CIVILIAN, MERRILL, EXEMPTED, MIDWINTER, LUMMINNER, LUMMINNER,
 SECTION 24, CIVILIAN, MERRILL, EXEMPTED, MIDWINTER, LUMMINNER, LUMMINNER,
 WITHIN TOWNSHIP 05 SOUTH, RANGE 78 EAST, COOPER RIVER MERIDIAN, ALASKA
 CONTAINING 54.88 ACRES, MORE OR LESS.

LINE TABLE

LINE#	DIRECTION	LENGTH
L1	S 84°31'00\"/>	
L2	N 11°11'00\"/>	
L3	S 84°31'00\"/>	
L4	N 11°11'00\"/>	
L5	S 84°31'00\"/>	
L6	N 11°11'00\"/>	
L7	S 84°31'00\"/>	
L8	N 11°11'00\"/>	
L9	S 84°31'00\"/>	
L10	N 11°11'00\"/>	
L11	S 84°31'00\"/>	
L12	N 11°11'00\"/>	
L13	S 84°31'00\"/>	
L14	N 11°11'00\"/>	
L15	S 84°31'00\"/>	
L16	N 11°11'00\"/>	
L17	S 84°31'00\"/>	
L18	N 11°11'00\"/>	
L19	S 84°31'00\"/>	
L20	N 11°11'00\"/>	
L21	S 84°31'00\"/>	
L22	N 11°11'00\"/>	

LINE TABLE

LINE#	DIRECTION	LENGTH
L23	S 84°31'00\"/>	
L24	N 11°11'00\"/>	
L25	S 84°31'00\"/>	
L26	N 11°11'00\"/>	
L27	S 84°31'00\"/>	
L28	N 11°11'00\"/>	
L29	S 84°31'00\"/>	
L30	N 11°11'00\"/>	
L31	S 84°31'00\"/>	
L32	N 11°11'00\"/>	
L33	S 84°31'00\"/>	
L34	N 11°11'00\"/>	
L35	S 84°31'00\"/>	
L36	N 11°11'00\"/>	
L37	S 84°31'00\"/>	
L38	N 11°11'00\"/>	
L39	S 84°31'00\"/>	
L40	N 11°11'00\"/>	
L41	S 84°31'00\"/>	
L42	N 11°11'00\"/>	
L43	S 84°31'00\"/>	
L44	N 11°11'00\"/>	

LINE TABLE

LINE#	DIRECTION	LENGTH
L45	S 84°31'00\"/>	
L46	N 11°11'00\"/>	
L47	S 84°31'00\"/>	
L48	N 11°11'00\"/>	
L49	S 84°31'00\"/>	
L50	N 11°11'00\"/>	
L51	S 84°31'00\"/>	
L52	N 11°11'00\"/>	
L53	S 84°31'00\"/>	
L54	N 11°11'00\"/>	
L55	S 84°31'00\"/>	
L56	N 11°11'00\"/>	
L57	S 84°31'00\"/>	
L58	N 11°11'00\"/>	
L59	S 84°31'00\"/>	
L60	N 11°11'00\"/>	
L61	S 84°31'00\"/>	
L62	N 11°11'00\"/>	
L63	S 84°31'00\"/>	
L64	N 11°11'00\"/>	

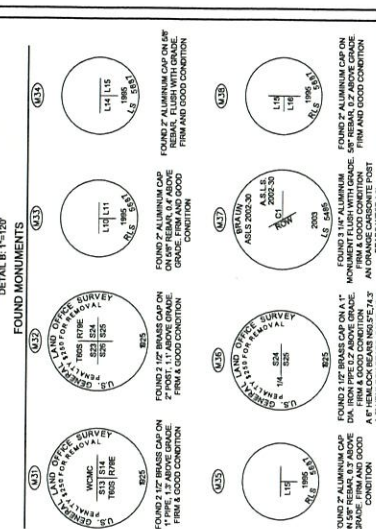
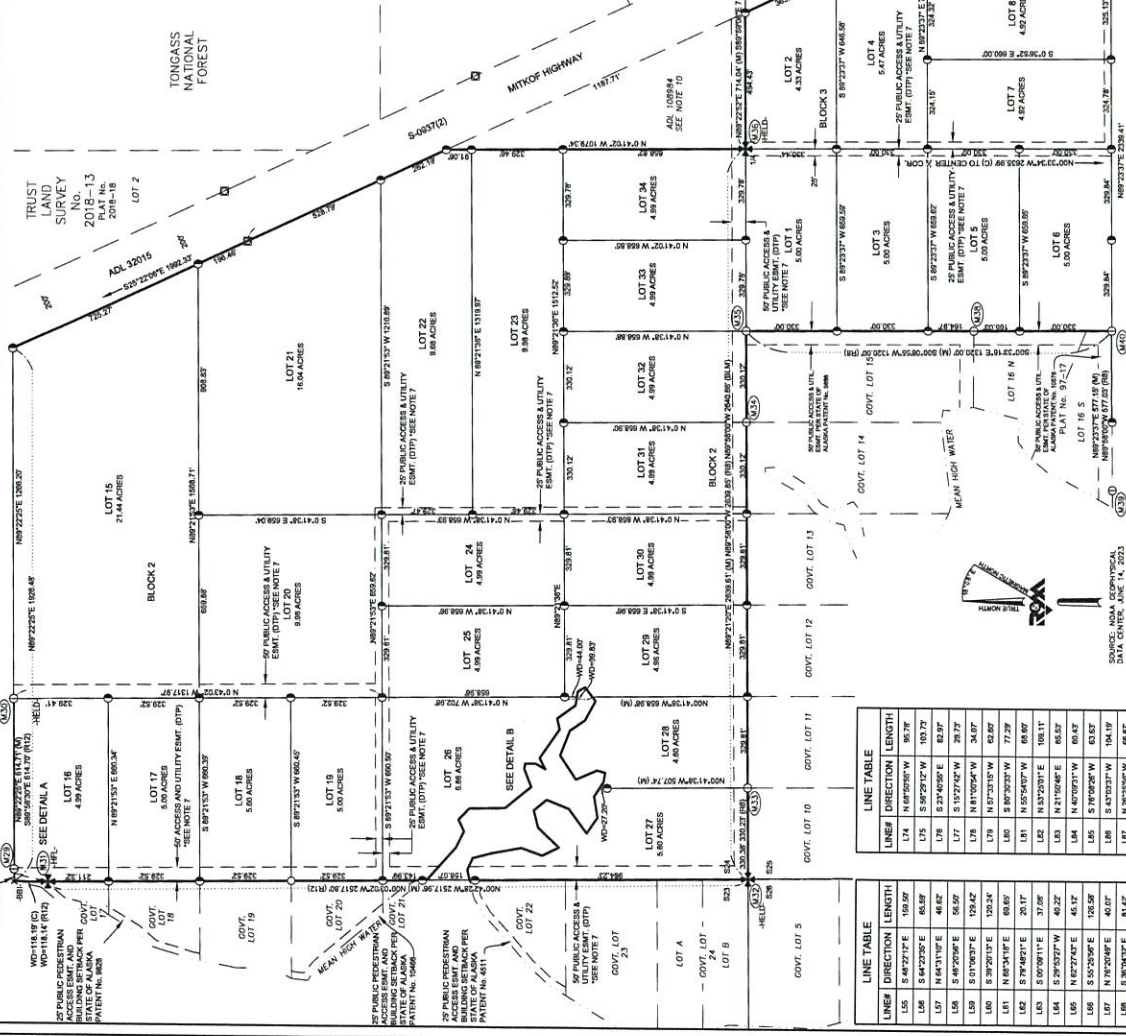
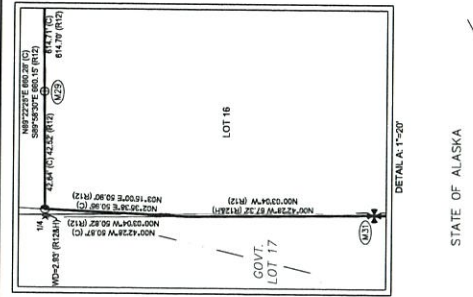
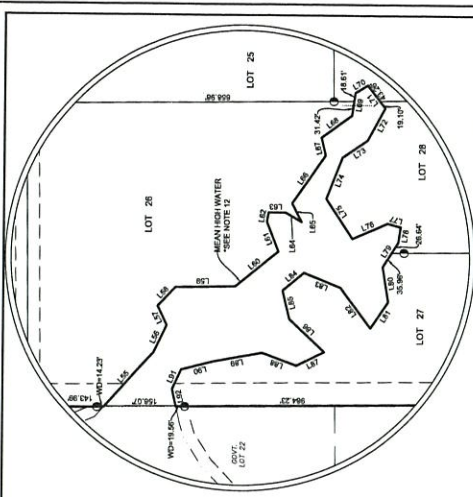


8101 Venture Drive, Anchorage, Alaska, 99507
 Phone: (907) 552-3403
 Website: www.mitchell.com

PLS FILE NO.
 FILE NO. 2502-02
 REC'D. 03/05/2023
 SCALE
 SHEET 3 OF 3

TLS 2021-02
 1-200
 DRAWN DATE: 09/03/21

PA20230011



TRUST LAND SURVEY 2021-02
SOUTH MITKOF SUBDIVISION
 CREATING LOTS 1 THRU 30 IN BLOCK 1, LOTS 1 THRU 34 IN BLOCK 2, LOTS 1 THRU 21 IN BLOCK 3, AND LOTS 1 THRU 15 IN BLOCK 4

SECTION 1: LOT 1 AND NE/4SW
 SECTION 2: NE/4SW AND NE/4SE
 SECTION 3: NE/4SW AND NE/4SE
 SECTION 4: NE/4SW AND NE/4SE
 SECTION 5: NE/4SW AND NE/4SE
 SECTION 6: NE/4SW AND NE/4SE
 SECTION 7: NE/4SW AND NE/4SE
 SECTION 8: NE/4SW AND NE/4SE
 SECTION 9: NE/4SW AND NE/4SE
 SECTION 10: NE/4SW AND NE/4SE
 SECTION 11: NE/4SW AND NE/4SE
 SECTION 12: NE/4SW AND NE/4SE
 SECTION 13: NE/4SW AND NE/4SE
 SECTION 14: NE/4SW AND NE/4SE
 SECTION 15: NE/4SW AND NE/4SE
 SECTION 16: NE/4SW AND NE/4SE
 SECTION 17: NE/4SW AND NE/4SE
 SECTION 18: NE/4SW AND NE/4SE
 SECTION 19: NE/4SW AND NE/4SE
 SECTION 20: NE/4SW AND NE/4SE
 SECTION 21: NE/4SW AND NE/4SE
 SECTION 22: NE/4SW AND NE/4SE
 SECTION 23: NE/4SW AND NE/4SE
 SECTION 24: NE/4SW AND NE/4SE
 SECTION 25: NE/4SW AND NE/4SE
 SECTION 26: NE/4SW AND NE/4SE
 SECTION 27: NE/4SW AND NE/4SE
 SECTION 28: NE/4SW AND NE/4SE
 SECTION 29: NE/4SW AND NE/4SE
 SECTION 30: NE/4SW AND NE/4SE
 SECTION 31: NE/4SW AND NE/4SE
 SECTION 32: NE/4SW AND NE/4SE
 SECTION 33: NE/4SW AND NE/4SE
 SECTION 34: NE/4SW AND NE/4SE

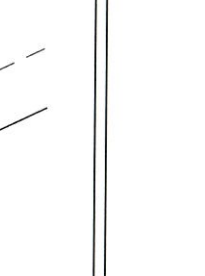
TRUST LAND SURVEY 2021-02
SOUTH MITKOF SUBDIVISION
 CREATING LOTS 1 THRU 30 IN BLOCK 1, LOTS 1 THRU 34 IN BLOCK 2, LOTS 1 THRU 21 IN BLOCK 3, AND LOTS 1 THRU 15 IN BLOCK 4

SECTION 1: LOT 1 AND NE/4SW
 SECTION 2: NE/4SW AND NE/4SE
 SECTION 3: NE/4SW AND NE/4SE
 SECTION 4: NE/4SW AND NE/4SE
 SECTION 5: NE/4SW AND NE/4SE
 SECTION 6: NE/4SW AND NE/4SE
 SECTION 7: NE/4SW AND NE/4SE
 SECTION 8: NE/4SW AND NE/4SE
 SECTION 9: NE/4SW AND NE/4SE
 SECTION 10: NE/4SW AND NE/4SE
 SECTION 11: NE/4SW AND NE/4SE
 SECTION 12: NE/4SW AND NE/4SE
 SECTION 13: NE/4SW AND NE/4SE
 SECTION 14: NE/4SW AND NE/4SE
 SECTION 15: NE/4SW AND NE/4SE
 SECTION 16: NE/4SW AND NE/4SE
 SECTION 17: NE/4SW AND NE/4SE
 SECTION 18: NE/4SW AND NE/4SE
 SECTION 19: NE/4SW AND NE/4SE
 SECTION 20: NE/4SW AND NE/4SE
 SECTION 21: NE/4SW AND NE/4SE
 SECTION 22: NE/4SW AND NE/4SE
 SECTION 23: NE/4SW AND NE/4SE
 SECTION 24: NE/4SW AND NE/4SE
 SECTION 25: NE/4SW AND NE/4SE
 SECTION 26: NE/4SW AND NE/4SE
 SECTION 27: NE/4SW AND NE/4SE
 SECTION 28: NE/4SW AND NE/4SE
 SECTION 29: NE/4SW AND NE/4SE
 SECTION 30: NE/4SW AND NE/4SE
 SECTION 31: NE/4SW AND NE/4SE
 SECTION 32: NE/4SW AND NE/4SE
 SECTION 33: NE/4SW AND NE/4SE
 SECTION 34: NE/4SW AND NE/4SE

CONTRACTING SALES AGENTS, MORE OR FEWER, AT THE DISCRETION OF THE TRUSTEES OF THE TRUST.

REX ACCO FTI
 9101 Vanguard Drive, Anchorage, Alaska 99507
 PH (907) 561-1111
 FAX (907) 561-1111
 WWW.REXACCO.COM

DATE: 03/26/2023
 END: 03/26/2023
 SCALE: 1"=200'
 FIELD NO.: 2500.02
 FILE NO.: 2500.02
 NLS 2021-02
 DRAWN BY: DCH
 SHEET 1 OF 5



DRAFT

LINE#	DIRECTION	LENGTH
L74	N 69°55'00" W	95.79
L75	S 89°24'12" W	103.27
L76	S 29°46'56" E	62.97
L77	S 15°57'42" W	29.77
L78	N 81°00'54" W	34.07
L79	S 87°30'15" W	62.67
L80	S 89°30'30" W	77.29
L81	N 52°54'00" W	66.67
L82	N 52°54'00" E	103.17
L83	N 14°50'00" E	65.67
L84	N 14°50'00" E	65.67
L85	N 14°50'00" E	65.67
L86	S 14°50'00" E	65.67
L87	N 14°50'00" W	103.17
L88	N 14°50'00" W	65.67
L89	N 14°50'00" W	65.67
L90	N 14°50'00" W	65.67
L91	N 14°50'00" W	65.67
L92	N 14°50'00" W	65.67
L93	N 14°50'00" W	65.67
L94	N 14°50'00" W	65.67
L95	N 14°50'00" W	65.67
L96	N 14°50'00" W	65.67
L97	N 14°50'00" W	65.67
L98	N 14°50'00" W	65.67
L99	N 14°50'00" W	65.67
L100	N 14°50'00" W	65.67

LINE#	DIRECTION	LENGTH
L1	N 69°55'00" W	95.79
L2	S 89°24'12" W	103.27
L3	S 29°46'56" E	62.97
L4	S 15°57'42" W	29.77
L5	N 81°00'54" W	34.07
L6	S 87°30'15" W	62.67
L7	S 89°30'30" W	77.29
L8	N 52°54'00" W	66.67
L9	N 52°54'00" E	103.17
L10	N 14°50'00" E	65.67
L11	N 14°50'00" E	65.67
L12	N 14°50'00" E	65.67
L13	S 14°50'00" E	65.67
L14	N 14°50'00" W	103.17
L15	N 14°50'00" W	65.67
L16	N 14°50'00" W	65.67
L17	N 14°50'00" W	65.67
L18	N 14°50'00" W	65.67
L19	N 14°50'00" W	65.67
L20	N 14°50'00" W	65.67
L21	N 14°50'00" W	65.67
L22	N 14°50'00" W	65.67
L23	N 14°50'00" W	65.67
L24	N 14°50'00" W	65.67
L25	N 14°50'00" W	65.67
L26	N 14°50'00" W	65.67
L27	N 14°50'00" W	65.67
L28	N 14°50'00" W	65.67
L29	N 14°50'00" W	65.67
L30	N 14°50'00" W	65.67

