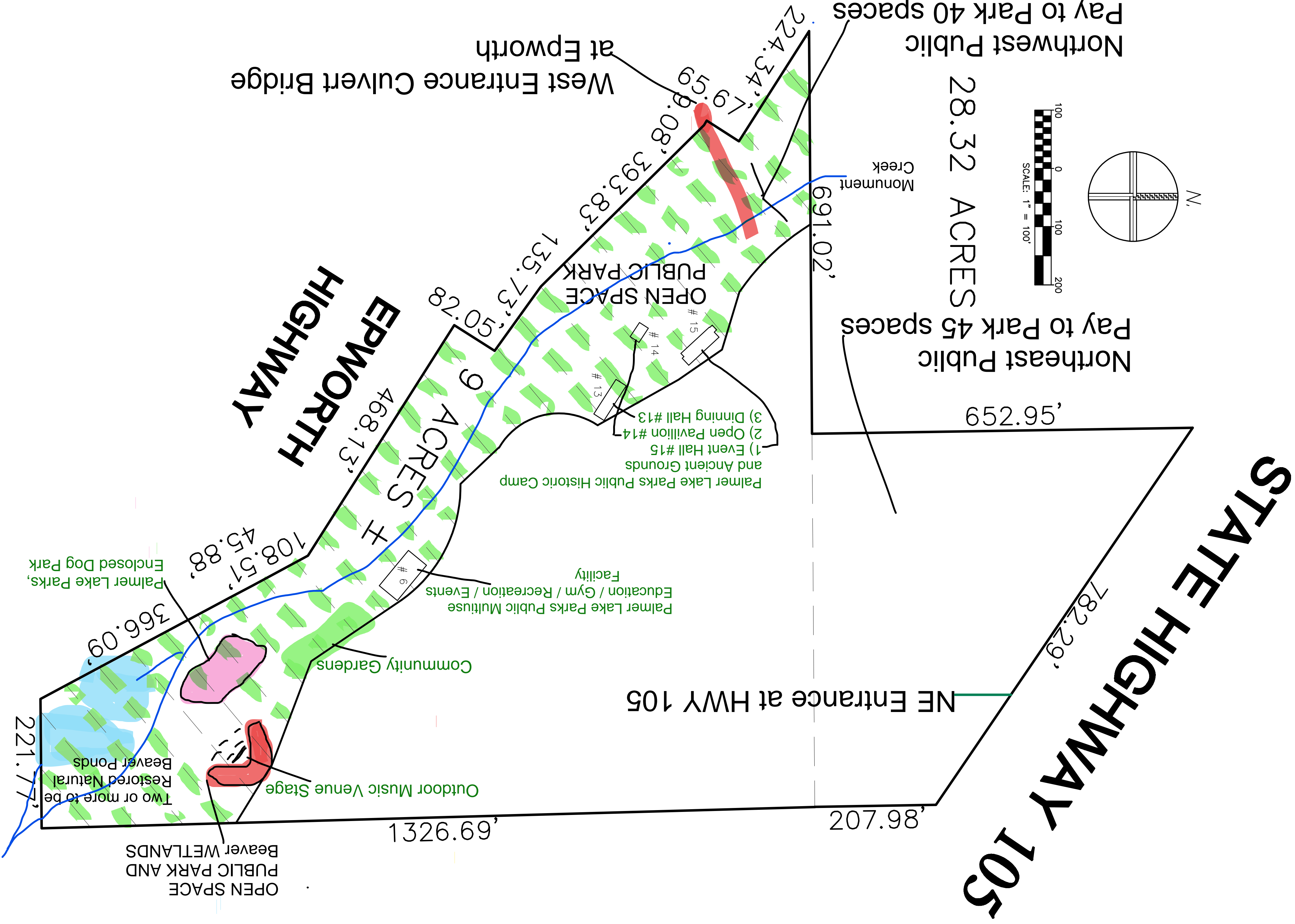


Palmer Lake Parks Commission Concept (working title) "Beaver Wetlands Park"
 9 Acres + or - Open Space Public Park and Wetlands in Perpetuity at 28.32 Acres Elephant Rock,
 January 6th 2023, submitted for Parks Commission Meeting. Discussion January 10th 2023.

Information and Park size Prepared by:
 Parks Commission Members
 Approximate / Concept measures by:
 Surveyor Jim Brinkman
 Graphics / Draft by: Parks Commission member Gene Kalest

- Locations Legend in Palmer Lake Park
- 1) Northeast Public Pay to Park 45 spaces
 - 2) Northwest Public Pay to Park 40 spaces
 - 3) West Entrance Culvert Bridge at Epworth
 - 4) Entire Parameter Trail
 - 5) Extended Creekside Trail to Beaver Ponds
 - 6) Two or more Log made ADA, Foot and Bike Bridges
 - 7) Southeast Two or more Restored Natural Beaver Ponds
 - 8) Palmer Lake Parks Public Multiuse Education / Gym / Recreation / Events Facility
 - 9) Palmer Lake Parks Public Historic Camp and Ancient Grounds
 - 1) Event Hall #15, Multiple Use
 - 2) Open Pavillion #14, Yoga, Poetry, Outdoor Education, Soft acoustic music
 - 3) Dining Hall #13, Multiple use
 - 10) Palmer Lake Parks, Enclosed Dog Park
 - 11) Outdoor Music Venue Stage
 - 12) Community Gardens



Parks Commission's new Public Park, Wetlands, Trails and Bridges Proposal is presented for discussion, building upon, and to create. With the intention of setting aside 9 plus acres, a new Public Park while protecting these wetlands, beaver ponds, historic and ancient sites. It was requested by the donor of this 28.32 acres land, the entire Town of Palmer Lake and its residents would benefit from their gift.