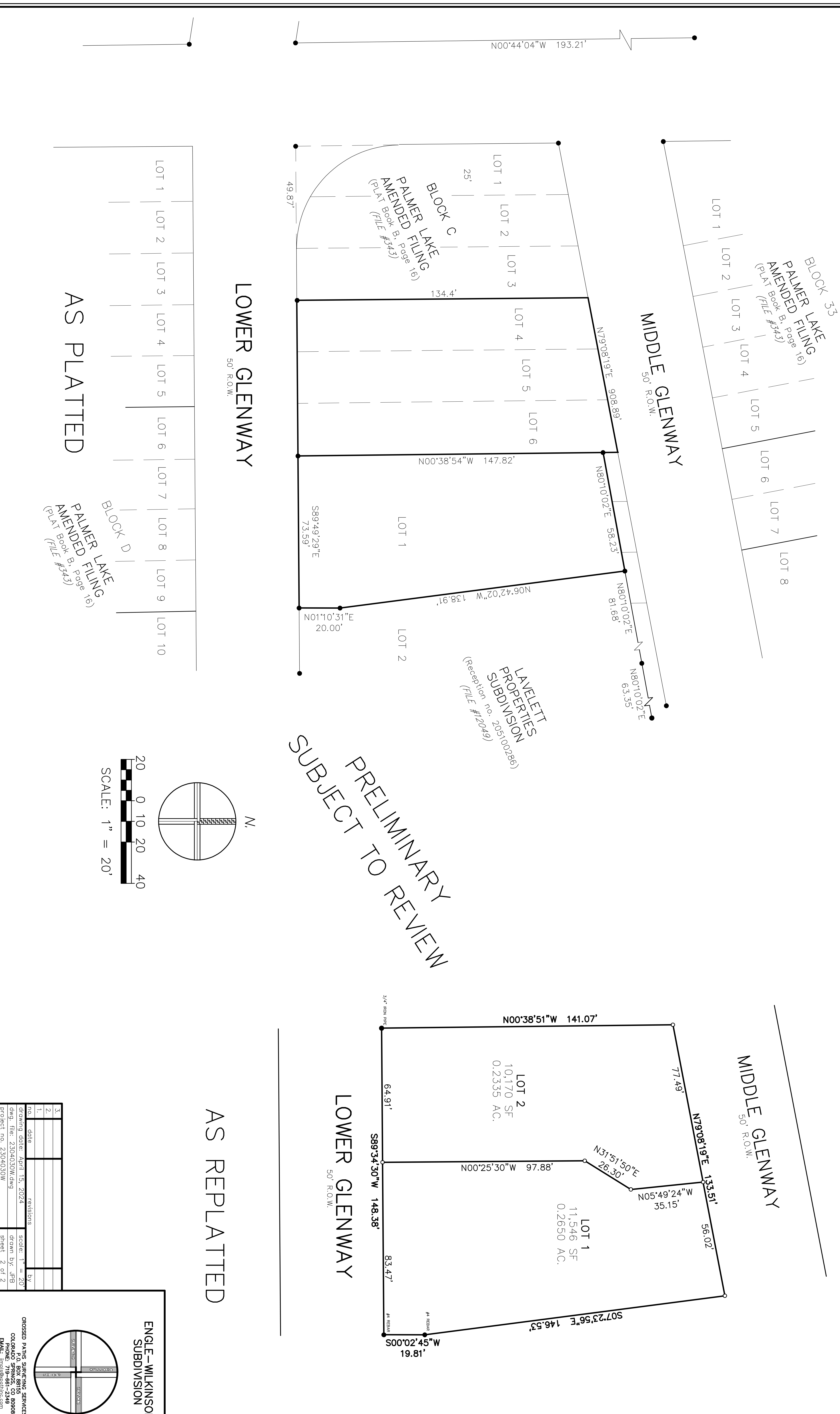


# ENGLE-WILKINSON SUBDIVISION

A VACATION AND REPLAT OF LOTS 4, 5, 6 AND THE REMAINING PORTIONS OF LOTS 7, 8, 9 ALL IN BLOCK C, PALMER LAKE AMENDED FILING to the Town of Palmer Lake, together with LOT 1, LAVELETT PROPERTIES SUBDIVISION, being a portion of the Southwest One-Quarter of Section 5, Township 11 South, Range 67 West of the 6th P.M., in the Town of Palmer Lake, El Paso County, Colorado

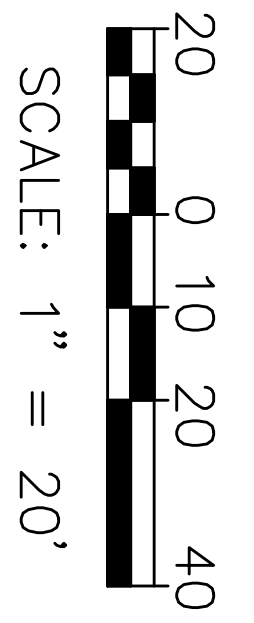
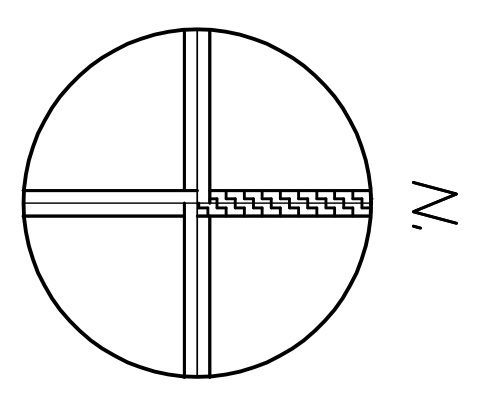


PRELIMINARY  
SUBJECT TO REVIEW

MIDDLE GLENWAY  
50' R.O.W.

LOWER GLENWAY  
50' R.O.W.

AS REPLATTED



no.	date	revisions	scale	by
3.				
2.				
1.				
no.	date	revisions	scale	by
1.	April 15, 2024		1" = 20'	drawn by: JPB
drawing date: April 15, 2024				
dwg. file: 2304030W.dwg				
project no. 2304030W				
sheet 2 of 2				

**ENGLE-WILKINSON SUBDIVISION**

CROSSED PATHS SURVEYING SERVICES, INC.  
COLORADO SPRINGS, CO 80908  
PHONE: 719-661-2348  
Email: info@crossedpaths.com