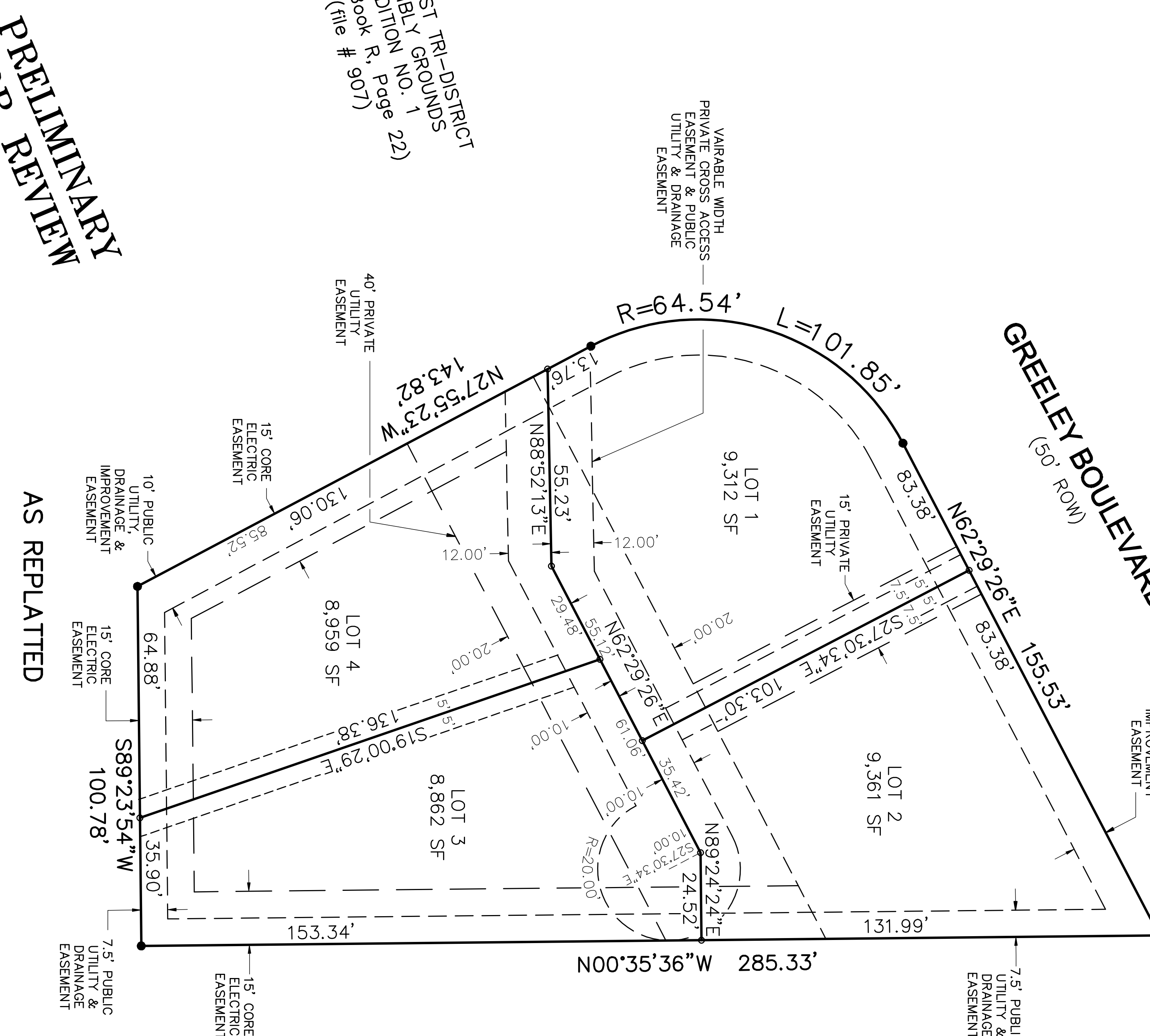
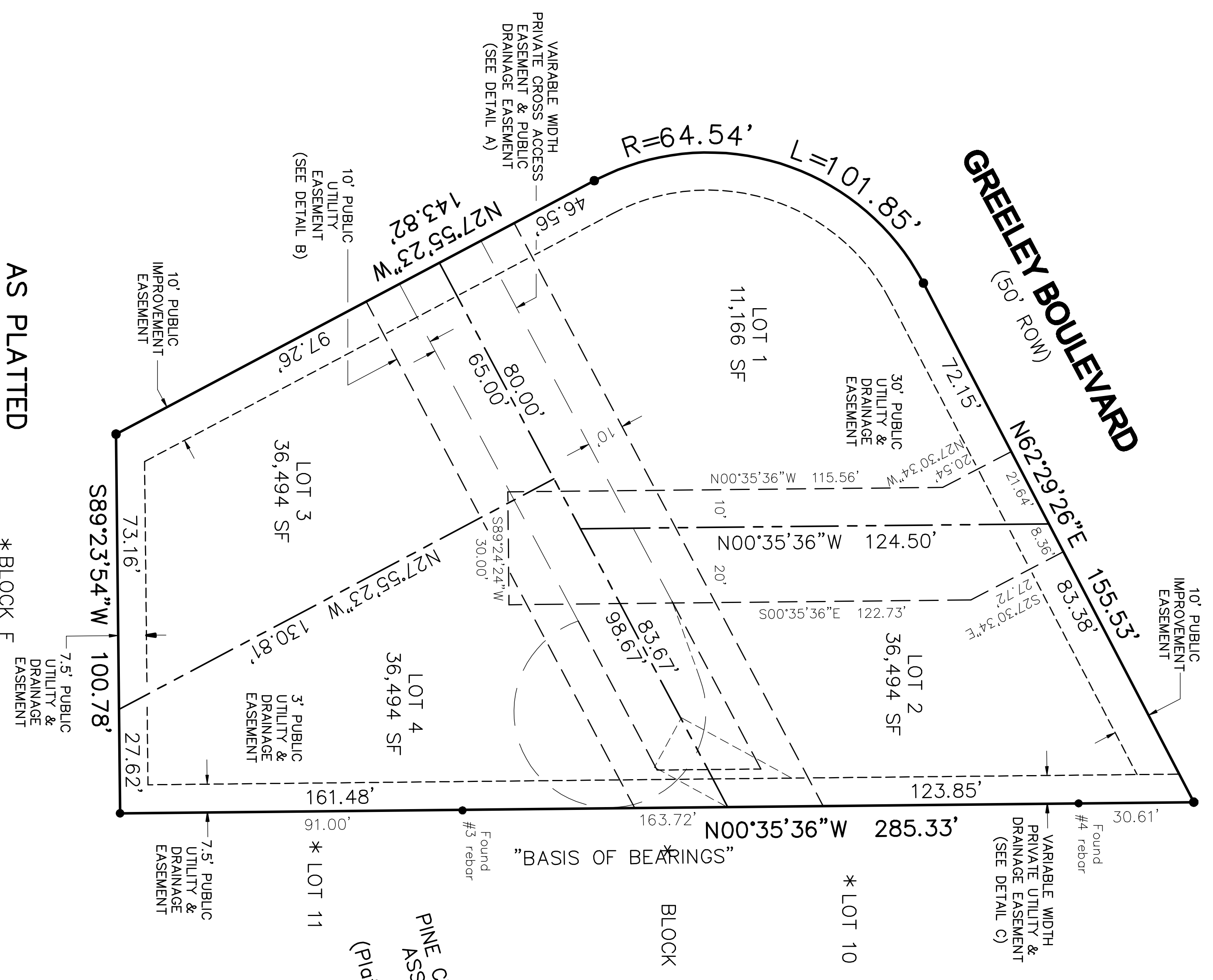


**A REPLAT OF LOT 1, BLOCK 2,  
PINE CREST YOUTH RANCH SUBDIVISION, AMENDMENT NO. 1**  
BEING A PORTION OF THE NORTHEAST ONE-QUARTER OF SECTION 8,  
TOWNSHIP 11 SOUTH, RANGE 67 WEST OF THE 6TH P.M.



**PRELIMINARY  
FOR REVIEW**

**AS REPLATTED**

**AS PLATTED**

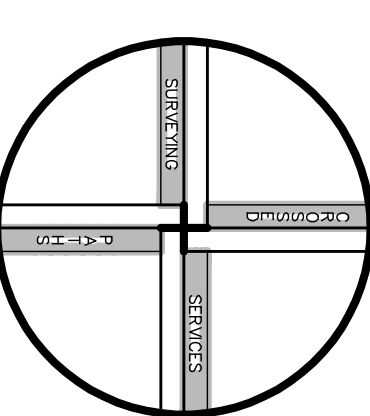
\* BLOCK F  
\* LOT 3

**PINE CREST TRI-DISTRICT  
ASSEMBLY GROUNDS**  
(Plat Book # 897)

**PINE CREST TRI-DISTRICT  
ASSEMBLY GROUNDS  
ADDITION NO. 1**  
(Plat Book # 907)

no.	date	revisions	scale	drawn by	sheet
3			1" = 20'		1 of 2
2					
1					

**A REPLAT OF LOT 1,  
BLOCK 2, PINE CREST  
YOUTH RANCH SUBDIVISION,  
AMENDMENT NO. 1**



**CROSSED PATHS SURVEYING SERVICES, INC.**  
COLORADO SPRINGS, CO 80908  
PHONE: 719-661-2348  
EMAIL: info@crossedpaths.com