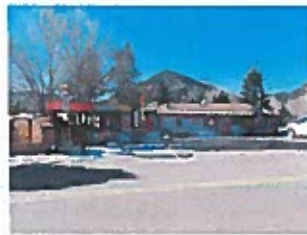
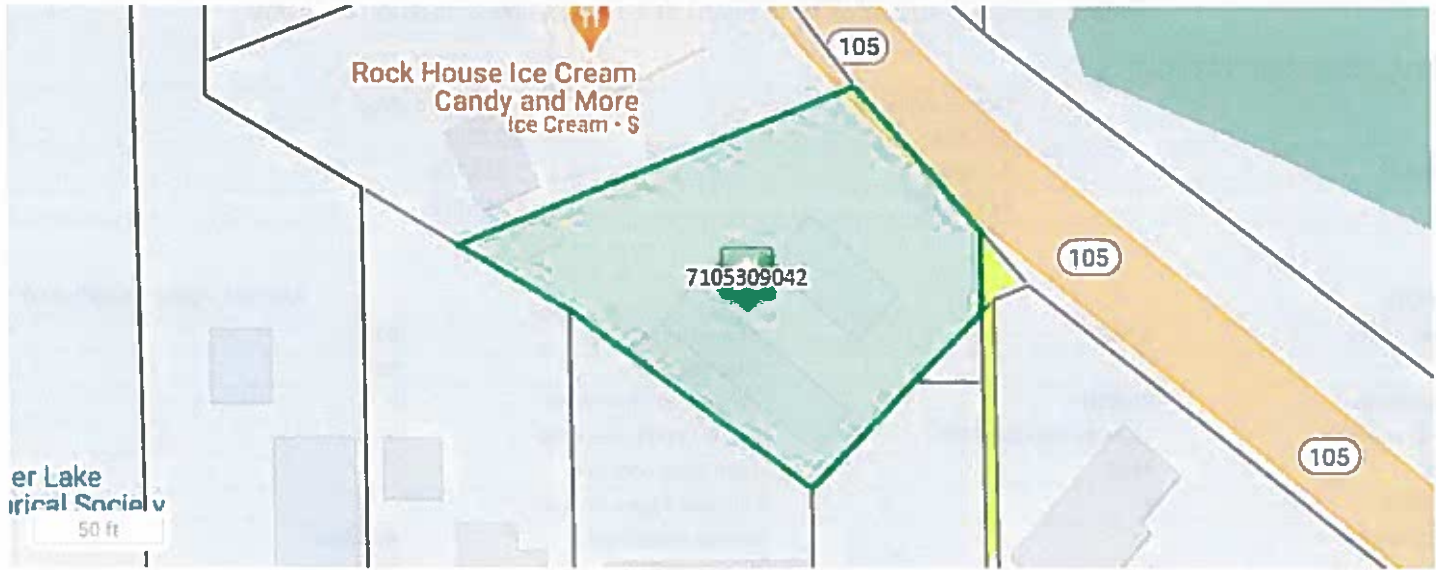


TAX ENTITY AND LEVY INFORMATION

County Treasurer Tax Information

Tax Area Code: PDZ Levy Year: 2022 Mill Levy: 73.312

Taxing Entity	Levy	Contact Name/Organization	Contact Phone
EL PASO COUNTY	7.732	FINANCIAL SERVICES	(719) 520-6400
EPC ROAD & BRIDGE SHARE	0.165	-	(719) 520-6498
TOWN OF PALMER LAKE	21.238	DAWN A COLLINS	(719) 481-2953
EPC-PALMER LAKE ROAD & BRIDGE SHARE	0.165	-	(719) 520-6498
LEWIS-PALMER SCHOOL NO 38	40.500	BRETT RIDGWAY	(719) 488-4705
PIKES PEAK LIBRARY	3.512	RANDALL A GREEN	(719) 531-6333
PALMER LAKE SANITATION	0.000	BECKY ORCUTT	(719) 481-2732



Disclaimer

We have made a good-faith effort to provide you with the most recent and most accurate information available. However, if you need to use this information in any legal or official venue, you will need to obtain official copies from the Assessor's Office. Do be aware that this data is subject to change on a daily basis. If you believe that any of this information is incorrect, please call us at (719) 520-6600.