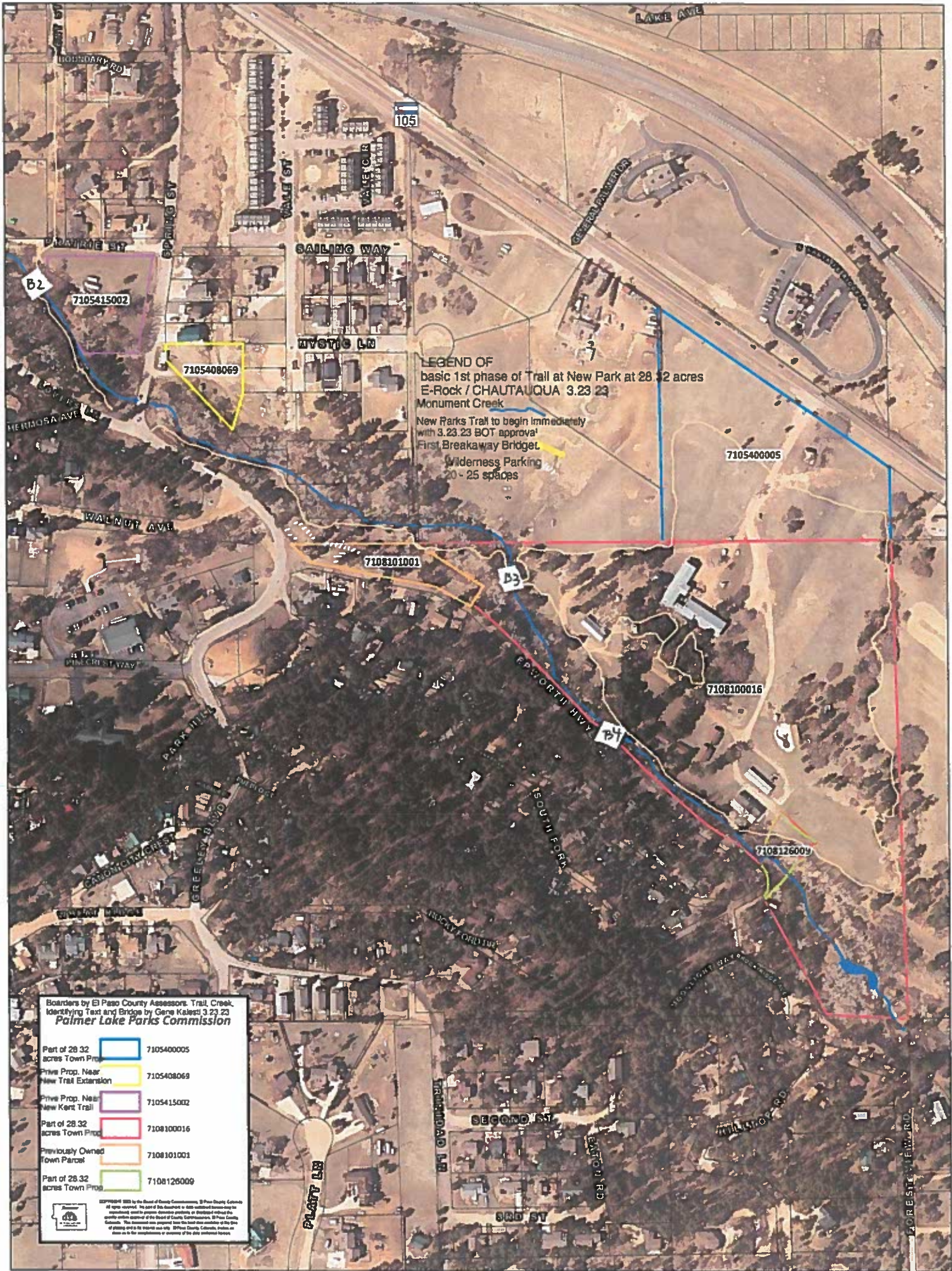


4 bridge (D)

B1



LEGEND OF
 basic 1st phase of Trail at New Park at 28.32 acres
 E-Rock / CHAUTAUQUA 3.23 23
 Monument Creek
 New Parks Trail to begin immediately
 with 3.23.23 BOT approval!
 First Breakaway Bridge
 Wilderness Parking
 20 - 25 spaces

Boundaries by El Paso County Assessors. Trail, Creek, Identifying Text and Bridge by Gene Kalesti 3.23.23
Palmer Lake Parks Commission

Part of 28.32 acres Town Prop	7105400005
Private Prop. Near New Trail Extension	7105408069
Private Prop. Near New Kent Trail	7105415002
Part of 28.32 acres Town Prop	7108100016
Previously Owned Town Parcel	7108101001
Part of 28.32 acres Town Prop	7108126009

©2019 El Paso County by the Board of County Commissioners, El Paso County, Colorado. All rights reserved. No part of this document is to be reproduced or transmitted in any form or by any means, electronic or mechanical, including photocopying, recording, or by any information storage and retrieval system, without the prior written permission of the Board of County Commissioners, El Paso County, Colorado. This document was prepared for the use of the Board of County Commissioners and is to be used only for the purposes intended. It is not to be used for any other purpose without the prior written permission of the Board of County Commissioners.

RECOMMENDATION

4 Glue Laminated Beams

w/ pine wood posts sourced from Palmer Lake AND STEEL CABLE RUNNING HORIZONTALLY INSTEAD OF WOOD

