

Palmer Lake Parks and Trails Commission Proposal for a New Park

Palmer Lake Municipal Code Chapter 2.20.040 – Parks and Trails Commission Duties and Responsibilities: The commission shall advise on matters pertaining to the implementation and development of the town park areas, new parks, trails and open spaces subject to approval of the town board.

The Palmer Lake Parks and Trails Commission requests the Board of Trustees consider designating specific town property as Cindy Allen Memorial Park. Cindy Allen was a beloved and deeply involved member of the Palmer Lake community. She and her husband Tom, built their home and spent decades enriching the town through civic engagement and volunteerism. Together, they founded the volunteer Parks and Recreation Committee, fostering outdoor spaces and community spirit. Cindy served as Mayor pro tem for 14 years and was a dedicated member of the Board of Trustees, contributing her leadership and vision to the town's development. Part of her lasting legacy in Palmer Lake is the Creekside Trail, a project she championed, built, and brought to life for the enjoyment of future generations.

The attached maps identify the area that we are proposing for the new park. The PLP&T Commission believes dedicating this town property as a park will benefit all the citizens of Palmer Lake and that this area should be designated as a park for the following reasons.

1. This area is already a key part of the Palmer Lake Parks and Trails trail system.
 - See attached map of the existing trail system.
 - Creekside Trail from Walnut Ave to Spring Street along the north side of Lover's Lane was constructed approximately 30 years ago. This area is directly across from Glen Park and has been maintained by the PLP&T Commission since 2018.
 - Palmer Lake Board of Trustees Resolution NO. 28-2023 authorized construction of a new trail beginning at the Kent Street platted right of way, to cross the creek, connect to the existing Creekside trail and follow southeast to the Elephant Rock town property to the open pavilion.
 - Resolution NO. 10-2024 authorized construction of walking bridges as part of the trail system.
 - Two bridges have been constructed, by US Air Force Academy cadets, to cross the creek and complete the trail system approved by the Board of Trustees. These bridges provide access to the downtown area and the Elephant Rock property.
 - In addition to the two US Air Force Academy bridges, two additional bridges have been constructed giving access to the existing trail system in the new park.
2. Designating this area as a park or open space would make it eligible for Conservation Trust Funds.
 - Per Department of Local Affairs 8 CCR 1306-3 Rules and Regulations, Conservation Trust Funds are the portion of Lottery proceeds constitutionally mandated to be distributed directly to local governments, based on population, for acquiring and maintaining parks, open space and recreational facilities. The funds are distributed and monitored through the Colorado Department of Local Affairs (DOLA).
3. The area has significant floodplain areas.
 - The FEMA Floodplain map of the proposed park area is attached.
 - The Pikes Peak Regional Building Department is the local Floodplain Administrator. They are responsible for identifying floodplain areas, and regulating the significant restrictions on uses.
 - Parks and open space are allowable uses for floodplain areas.
4. The proposed new park area is recognized by the US Fish and Wildlife Service as Preble's Meadow Jumping Mouse (Threatened Status) habitat. The PMJM is also identified by Colorado

Parks and Wildlife as a Priority Wildlife Species.

- The U.S. Fish and Wildlife Service added the Preble's Meadow Jumping Mouse to the List of Endangered and Threatened Wildlife in 50 CFR 17.11 as a threatened species on May 13, 1998 (63 FR 26517).
- The proposed park is included in the critical habitat for the Preble's mouse that includes approximately 411 miles (661 km) of rivers and streams and 34,935 acres (14,138 hectares) of lands in Colorado.
- Colorado Parks and Wildlife lists the PMJM as a Tier 1 Species of Greatest Conservation Need

5. Palmer Lake Parks and Trails Maintenance.

- PLP&T has spring and fall service days that focuses on maintenance of park facilities. These service days have focused multiple times on the area(s) that PLP&T is requesting for park designation.
- The area being requested for park designation is a critical part of the Fountain Creek Watershed Headwaters District. As such, the area is part of the annual Creek Week Service Days. The District supplies materials for creek cleanup and PLP&T organizes cleanup activities with the help of volunteers.
- PLP&T has been awarded multiple grants to improve the trail system, build new trails, and maintain the existing trail system in the proposed new park area.
- This year, the Mile High Youth Corp, through a grant, removed a huge amount of debris and foliage in the proposed new park area along North Monument Creek.
- PLP&T has already invested significant time and funding for improvements in the area we are proposing as a park. Trails have been constructed and maintained in the new park area after approval from the Board of Trustees.
- Benches have been placed in various locations along the trail system in the proposed new park.
- A great example of how these efforts have paid off is that trout have naturally returned to the creek in the area proposed as Cindy Allen Park.

6. Palmer Lake Public Works Maintenance.

- PLPW currently maintains the area as part of it's ongoing Parks and Trails maintenance responsibilities.

7. The area along N. Monument Creek has heritage apple trees.

- Heritage apple trees are recognized by the El Paso County Conservation District as part of the historic fruit tree culture of Colorado.
- Creation of the park would be a step towards preserving these trees. PLP&T has explored and obtained quotes on a 3 year program to prune, inject and care for the trees.

8. The proposed park has the full support of the Fountain Creek Watershed District and the Mile High Youth Corp. Letters of support are attached.

Attachments

1. Palmer Lake Municipal Code Chapter 2.20.040
2. Maps of proposed park
3. Maps of the existing trail system
4. PL BoT Resolution 28-2023
5. PL BoT Resolution 10-2024
6. Department of Local Affairs 8 CCR 1306-3 Rules and Regulations
7. FEMA Floodplain map
8. US Fish and Wildlife 50 CFR 17.11
9. Colorado Parks and Wildlife PMJM Assessment Publication
10. FCWD and MHYC Letters of Support

CHAPTER 2.20. - PARKS AND TRAILS COMMISSION

2.20.010. - Creation and establishment of advisory parks and trails commission.

There is hereby created and established the parks and trails commission, hereinafter referred to as "commission" in this chapter, for the town, which shall consist of seven members, with the addition of one alternate member to fill in for a regular voting member as needed, who shall be town residents for a minimum of one year, and shall be appointed by the mayor with the approval of the town board of trustees.

(Code 1973, § 12.20.020; Ord. No. 4-1991, § 3, 1991)

2.20.020. - Term of office.

The terms of office for the appointed members shall be two-year staggered terms. Recommendation for re-appointment is an option. In the event that a vacancy occurs during the term of any member, his or her successor may be recommended by the commission and shall be appointed by the mayor, with the approval of the town board of trustees, for the unexpired portion of the term.

(Code 1973, § 12.20.030; Ord. No. 4-1991, § 4, 1991)

2.20.030. - Compensation.

Members shall serve without compensation.

(Code 1973, § 12.20.040; Ord. No. 4-1991, § 5, 1991; Ord. No. 9-1982, § 6, 1983)

2.20.040. - Duties and responsibilities.

It shall be the responsibility of the commission to solicit citizen input and volunteers to assist in the upkeep of town parks, trails, and trail bridges identified as work groups. The commission shall advise on matters pertaining to the implementation and development of the town park areas, new parks, trails and open spaces subject to approval of the town board. The commission, when requested by the town board of trustees, shall consider, investigate, make findings, report and recommend upon any special matter or question impacting parks and/or trails. It shall also be the responsibility of the commission to study, investigate, counsel, and develop and/or update a written plan for the care, preservation, pruning, planting, replanting, removal or disposition of trees, shrubs and weeds; the care, creation, or preservation of trails, trail bridges in parks, and Town property. Such plan(s) shall be presented to the town board of trustees and, upon their acceptance and approval, shall constitute the official comprehensive Palmer Lake Parks and Trails Plan for the town.

(Code 1973, § 12.20.050; Ord. No. 4-1991, § 6, 1991)

2.20.050. - Operation.

The commission shall meet monthly and follow Colorado Open Meeting rules and regulations and keep a journal of its proceedings. A quorum for the transaction of business shall consist of a majority of the members of the commission. All members present shall be required to vote in all matters where they do not have a declared conflict of interest.

The Commission shall make its own rules, agreed upon by a majority of the Commission members. The rules shall not conflict with existing Town Code or resolutions, policy, or laws of any government entity in the United States. It shall be the responsibility of Commission members to participate as a Point of Contact (POC) to assist in specific areas of town parks and trails.

(Code 1973, § 12.20.060; Ord. No. 4-1991, § 7, 1991)

2.20.060. - Interference with commission.

It shall be unlawful for any person to prevent, delay or interfere with the work of the commission, or its work groups, or any of its agents, while engaging in and about the planting, cultivation, mulching, pruning, maintenance, spraying or removing of any park trees, shrubs, plants and property; creation or maintenance of trails, or trail bridges; adding to, or maintaining playgrounds, tennis/pickle ball courts, or other park facilities, as authorized in this chapter.

(Code 1973, § 12.20.090; Ord. No. 4-1991, § 12, 1991)

2.20.070. - Review by town board of trustees.

The town board of trustees shall have the right to review the conduct, acts and decisions of the commission. Any person may appeal acts and decisions of the commission to the town board of trustees, who shall hear the matter and make a final decision.

(Code 1973, § 12.20.100; Ord. No. 4-1991, § 13, 1991)

**TOWN OF PALMER LAKE
EL PASO COUNTY
STATE OF COLORADO**

RESOLUTION NO. 28-2023

**A RESOLUTION TO AUTHORIZE PARKS COMMISSION TO CREATE A TRAIL WITHIN THE
BOUNDARIES OF THE TOWN OF PALMER LAKE, COLORADO**

WHEREAS, Palmer Lake is a statutory Town organized under Part 3 of Article 4 of Title 31 of the Colorado Revised Statutes; and

WHEREAS, the Board of Trustees of the Town of Palmer Lake, Colorado, pursuant to Colorado statute and the Town of Palmer Lake Municipal Code, is vested with the authority of administering the affairs of the Town of Palmer Lake, Colorado;

WHEREAS, the Board holds authority over town public property; and

WHEREAS, the Board has authorized the Parks Commission to create a new trail to help connect existing trails within the town boundaries.

**NOW, THEREFORE, BE IT RESOLVED BY THE BOARD OF TRUSTEES OF THE TOWN OF
PALMER LAKE OF EL PASO COUNTY, COLORADO, AS FOLLOWS:**

Section 1. The Board authorizes the Parks Commission to do the following on behalf of the Board of Trustees:

- a. Stake and/or flag a proposed trail beginning at the Kent Street platted right of way, to cross the creek, connect to the Creekside trail and follow southeast to the Elephant Rock town property to the open pavilion;
- b. Provide written notice to all abutting property owners of the proposed trail;
- c. Hear any concerns about the proposed trail and report such concerns to the Board of Trustees;
- d. Review the trail design with Fire Department for proper mitigation;
- e. Build and install one walking bridge to cross the creek to connect to Creekside trail;
- f. Stake/flag a potential future parking area for review; and,
- g. Build the proposed trail, so long as the trail has been staked/flagged for not less than 30 days and the Board of Trustees has not directed otherwise.

Section 2. Severability. If any article, section, paragraph, sentence, clause, or phrase of this Resolution is held to be unconstitutional or invalid for any reason such decision shall not affect the validity or constitutionality of the remaining portions of this Resolution. The Board of Trustees hereby declares that it would have passed this resolution and each part or parts thereof irrespective of the fact that any one part or parts be declared unconstitutional or invalid.

Section 3. Repeal. Existing resolutions or parts of resolutions covering the same matters embraced in this Resolution are hereby repealed and all resolutions or parts of resolutions inconsistent with the provisions of this Resolution are hereby repealed.

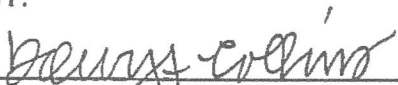
INTRODUCED, RESOLVED, AND PASSED AT A REGULAR MEETING OF THE BOARD OF TRUSTEES OF THE TOWN OF PALMER LAKE ON THIS 13th DAY OF APRIL 2023.

TOWN OF PALMER LAKE, COLORADO



Grant Havenar, Mayor

ATTEST:

By: 

Dawn A. Collins, Town Administrator/Clerk

TOWN OF PALMER LAKE, COLORADO

RESOLUTION NO. 10 - 2024

**A RESOLUTION TO AUTHORIZE TRAIL BUILDING BY THE
PALMER LAKE PARKS AND TRAILS COMMISSION
PALMER LAKE, COLORADO**

WHEREAS, the Board of Trustees of the Town of Palmer Lake, Colorado, pursuant to Colorado statute and the Town of Palmer Lake Municipal Code, is vested with the authority of administering the affairs of the Town of Palmer Lake, Colorado; and

WHEREAS, the Town of Palmer Lake seeks to authorize the Parks and Trails Commission to continue trail building activity; and

WHEREAS, the enclosed map was presented and a plan requested by the Parks Commission members to approve specific trail development; and

WHEREAS, the Board of Trustees desires to support the Parks and Trails Commission, as authorized in Chapter 2.20.040 of the town code, to safely connect areas of the town.

NOW, THEREFORE, BE IT RESOLVED BY THE BOARD OF TRUSTEES OF THE TOWN OF PALMER LAKE, COLORADO AS FOLLOWS:

1. In addition to the approved activity outlined in Resolution 28-2023 to build a trail beginning at Kent undeveloped right of way connecting to Creekside Trail, following southeast to the Elephant Rock (ER) property to the pavilion, and to install one walking bridge, completed, the Town Board of Trustees hereby authorizes the Parks and Trails Commission to –
 - a. Design, build and install additional bridges in partnership with US Air Force Academy, as identified on the map exhibit;
 - b. Renovate the open-air pavilion on ER property; and
 - c. Develop a perimeter trail within the ER property as outlined on the map exhibit.
2. Severability. If any article, section, paragraph, sentence, clause, or phrase of this Resolution is held to be unconstitutional or invalid for any reason such decision shall not affect the validity or constitutionality of the remaining portions of this Resolution. The Board of Trustees hereby declares that it would have passed this resolution and each part or parts thereof irrespective of the fact that any one part or parts be declared unconstitutional or invalid.
3. Repeal. Existing resolutions or parts of resolutions covering the same matters embraced in this Resolution are hereby repealed and all resolutions or parts of resolutions inconsistent with the provisions of this Resolution are hereby repealed.

INTRODUCED, RESOLVED, AND PASSED AT A REGULAR MEETING OF THE BOARD OF TRUSTEES OF THE TOWN OF PALMER LAKE ON THIS 11th DAY OF JANUARY 2024.

ATTEST:

TOWN OF PALMER LAKE, COLORADO

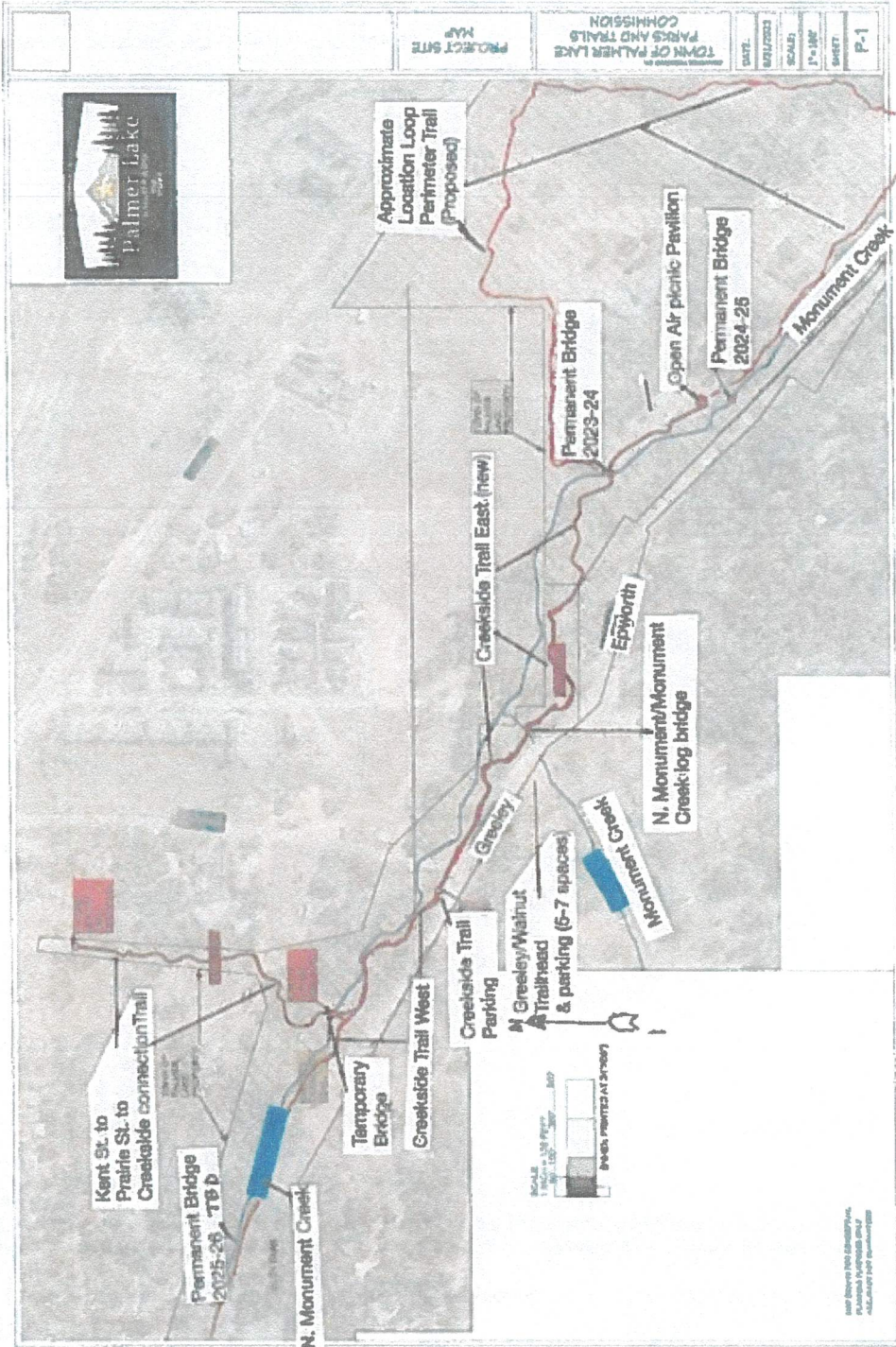


Dawn A. Collins
Town Administrator/Clerk

BY: 

Grant Havenar
Mayor

Palmer Lake Parks & Trails: Kent, Prairie, Creekside, E-Rock Trail System Plan Update - Dec. 28, 2023



PROJECT SITE MAP
 TOWN OF PALMER LAKE
 PARKS AND TRAILS
 COMMISSION
 DATE: _____
 REVISIONS: _____
 SCALE: _____
 1" = 100'
 SHEET: P-1

Map Source: GIS Department
 Date: 12/28/2023

DEPARTMENT OF LOCAL AFFAIRS
Division of Local Government

8 CCR 1306–3 Rules and Regulations

CONSERVATION TRUST FUND ADMINISTRATION, INCLUDING MONITORING,
ENFORCEMENT, AND GUIDANCE REGARDING ALLOWABLE EXPENDITURES
(C.R.S. 29-21-101)

BASIS AND PURPOSE

The basis for these rules is C.R.S. 29-21-101 (2)(a)(I) which states: "There is hereby created in the division the conservation trust fund."

The purpose of these rules is to implement the provisions of C.R.S. 29-21-101-102(3)(a) through (c) by developing procedures regarding monitoring of eligible entities' compliance with relevant rules and statute, procedures regarding enforcement of penalties for noncompliance, and guidance regarding allowable expenditures of conservation trust fund revenues.

RULES

Part I. Definitions

- A. "Capital improvements" means the acquisition or improvement of fixed assets.
- B. "Division" means the Division of Local Government in the Department of Local Affairs.
- C. "Fixed assets" means land, buildings, equipment and improvements other than buildings that the recipient uses to provide Conservation Trust Fund-allowable expenditures, including costs of construction, renovation, demolition, rehabilitation, deferred maintenance, improvements, equipment and furnishings. Fixed assets are determined to be those with an original cost of \$500.00 or more, or with a useful life of one year or more.
- D. "Interests in land and water" means any and all rights and interests in land or water, or both, including fee interests and less than full fee interests such as future interests, developmental rights, easements, covenants, and contractual rights. Every interest in land or water may be in perpetuity or for a fixed term and shall be deemed to run with the land or water to which it pertains for the benefit of the citizens of this state.

- E. "Maintenance" means keeping Conservation Trust Fund-eligible assets in an original or existing state of repair or of preserving them from failure or decline.
- F. "New conservation sites" means interests in land and water, acquired after establishment of a conservation trust fund pursuant to this section, for park or recreation purposes, for all types of open space, including but not limited to floodplains, greenbelts, agricultural lands, or scenic areas, or for any scientific, historic, scenic, recreational, aesthetic, or similar purpose.

Part II. Reporting and Monitoring - Procedures necessary to allow the division or its agents to monitor eligible entities' compliance with the requirements of C.R.S. 29-21-101 and of rules promulgated pursuant to C.R.S. 29-21-101, including annual reporting and entry and inspection of records regarding accounting and expenditures of revenues from the Conservation Trust Fund.

- A. On forms supplied by the division, each eligible entity shall annually submit to the division a certification that they have established a Conservation Trust Fund and are eligible to receive Conservation Trust Fund moneys.
- B. The treasurer of a municipality or special district, chief financial officer, or the official custodian of the Conservation Trust Fund of an eligible entity shall annually review and certify to the division that the eligible entity's self-reported Conservation Trust Fund expenditures comply with the requirements of Article 21 of Title 29, C.R.S., and of rules promulgated pursuant to that article.
- C. On forms supplied by the division, each eligible entity shall annually submit to the division a statement showing the total amount of state moneys in its local Conservation Trust Fund, the amount of any state moneys encumbered or expended from such fund since the previous year's report, interest earned on the balance of Conservation Trust Funds from the previous year, and the purpose of the encumbrance or expenditure.
- D. All recipients of Conservation Trust Fund funds shall maintain records regarding accounting and expenditures of revenues from the Conservation Trust Fund moneys.
- E. An eligible entity shall not deposit any other moneys in its conservation trust fund.
- F. All interest earned on the investment of moneys in a local Conservation Trust Fund shall be credited to the fund and shall be expended only for purposes authorized by C.R.S. 29-21-101.
- G. In the utilization of moneys received pursuant to C.R.S. 29-21-101, each eligible entity may cooperate or contract with any other government or political subdivision pursuant to C.R.S. 29-1-201 et seq., subject to the separate

accounting requirement of C.R.S. 29-21-101 (2)(b)(II). Such cooperation may include the sharing of moneys held by any such entities in their respective Conservation Trust Funds for joint expenditures for the acquisition, development and maintenance of new conservation sites.

- H. All such records shall be made available for inspection upon demand by the division's staff or its agents.
- I. Division staff or its agents shall develop a system to monitor accounting and expenditure of revenues from the Conservation Trust Fund. Such a monitoring system shall include review and verification of data in annual reports submitted by eligible entities. The review shall provide assurance that the information self-reported by eligible entities is accurate and complete, and identify unallowable or questionable expenditures for follow-up. When concerns are noted during the review process, documentation to verify the eligible entities' expenditures or accounting practices shall be provided upon demand.

Part III. Enforcement - Procedures necessary to allow the division to enforce eligible entities' compliance with C.R.S. 29-21-101, including penalties, forfeiture of shares previously distributed, issuance of an order after a hearing held pursuant to C.R.S. 24-4-105 to repay to a state or local Conservation Trust Fund specific revenues from a conservation trust fund that were expended for purposes that are not authorized by C.R.S. 29-21-101, and, if the eligible entity fails to timely comply with the order, issuance of an order to the treasurer holding moneys of the eligible entity that were generated pursuant to the taxing authority of the eligible entity to prohibit the release of any such moneys until the eligible entity complies with the order, and the ability to treat a noncompliant eligible entity as though it were an ineligible entity.

- A. Upon preliminary determination that a Conservation Trust Fund recipient has violated statutes or rules governing fund expenditures or accounting practices, the division will notify the entity before considering enforcement actions.
- B. Prior to considering enforcement actions, the division shall conduct a hearing held pursuant to C.R.S. 24-4-105, in which pertinent facts concerning violations are presented. The recipient shall have full rights of and access to procedural due process to present facts and to rebut the determination of violation.
- C. Upon a finding of violation of statutes or rules, the division, in its sole discretion, shall have the authority to consider and take certain enforcement actions. Such actions shall include these options:
 - 1. Provision of a written warning and a corrective course of action.
 - 2. Issuance of an order to repay to a state or local Conservation Trust Fund specific revenues that were expended for purposes that are not authorized by statute or these rules.

3. If the eligible entity fails to comply with the order, the division will withhold future funds and treat the noncompliant eligible entity as though it were an ineligible entity.
4. Upon chronic non-compliance, the division will issue an order to the county treasurer to prohibit release of property tax revenues until the entity complies with the order.

Part IV. Expenditures - Guidance regarding allowable expenditures of Conservation Trust Fund revenues to facilitate eligible entities' compliance.

A. Allowable expenditures of Conservation Trust Funds include the following:

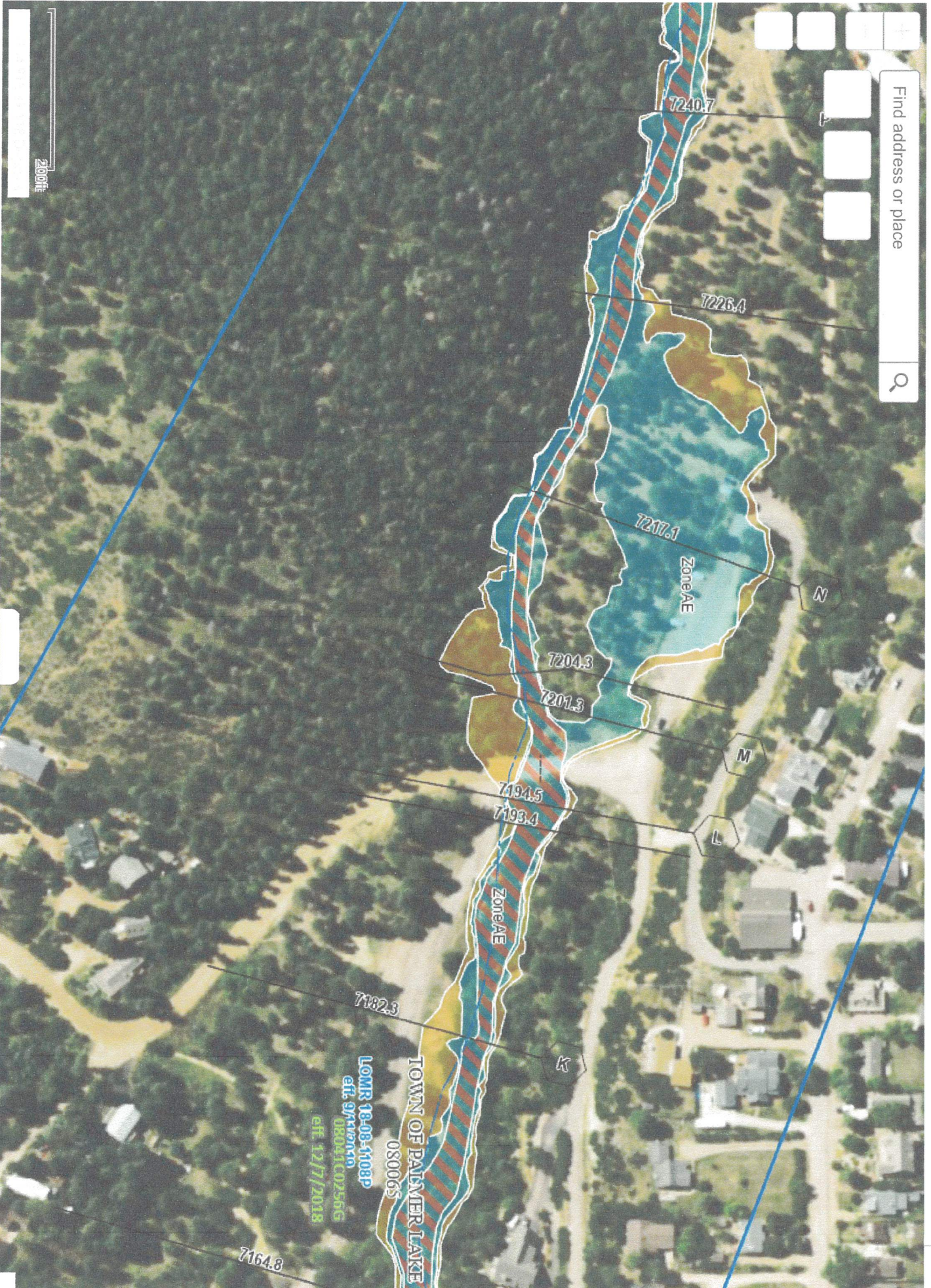
1. Acquisition, development, and maintenance of new conservation sites.
2. Capital improvements or maintenance for recreational purposes on any public site.
3. Operation of a system of television relay and translator facilities and the use, acquisition, equipping, and maintenance of land, buildings, and other recreational facilities therefore.

B. Unallowable expenditures of Conservation Trust Funds include, but are not limited to the following:

1. Operating expenditures, including salaries, except those operating expenditures, including salaries, that are considered to be for maintenance purposes.
2. Expenditure for activities such as athletic teams, fireworks, recreational programs, and public associations or clubs.



Find address or place



7240.7

7226.4

7217.1

7204.3

7201.3

7194.5

7193.4

7182.3

7164.8

Zone AE

Zone AE

TOWN OF PALMER LAKE

080065

LOMR 18-03-4108P

eff. 9/1/2010

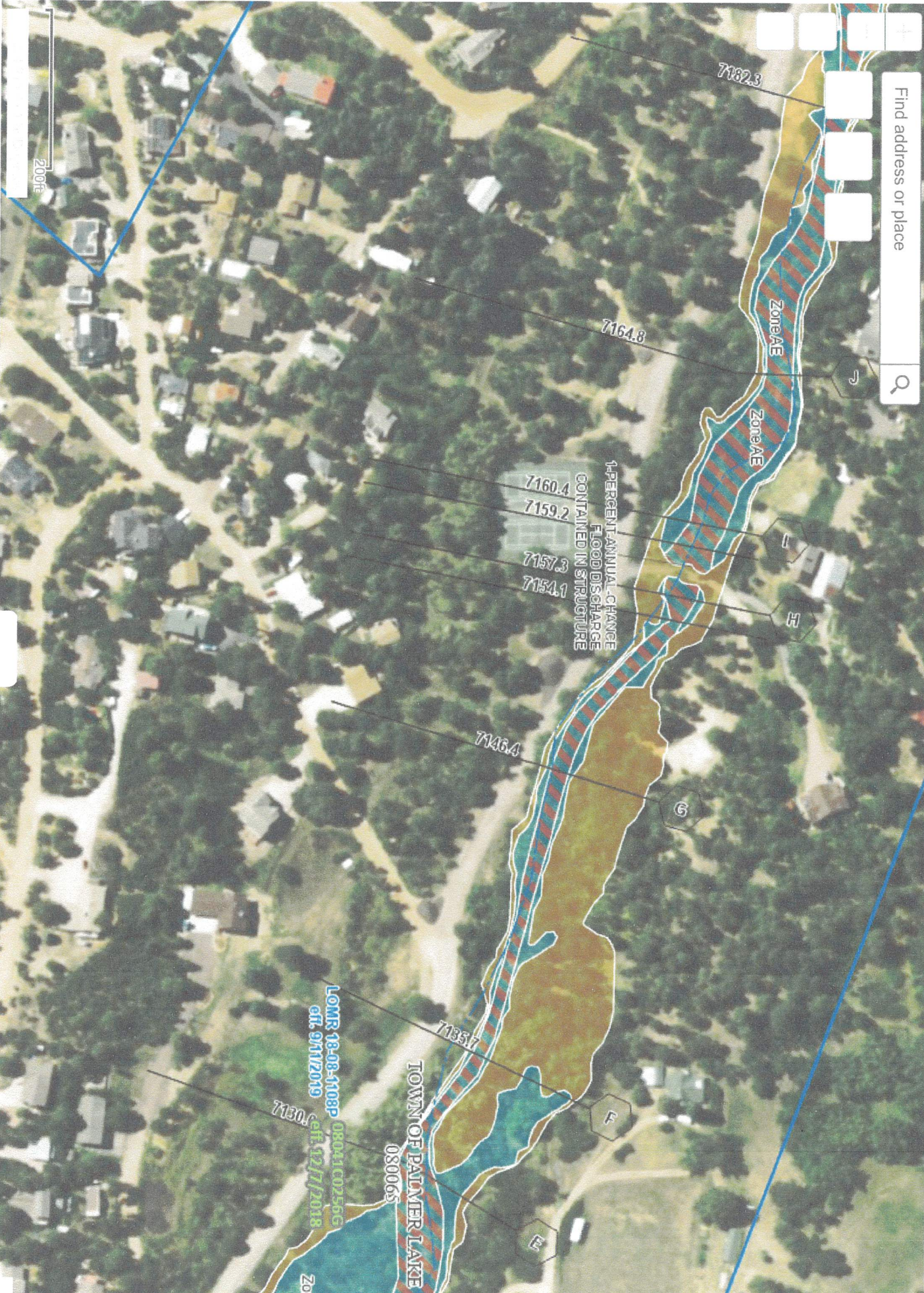
08041002566

eff. 12/7/2018

200ft



Find address or place



1-PERCENT ANNUAL CHANCE FLOOD DISCHARGE CONTAINED IN STRUCTURE

Zone AE

Zone AE

H

G

F

FE

LOMR 18-08-1108P 08041C0256G
eff. 2/11/2019

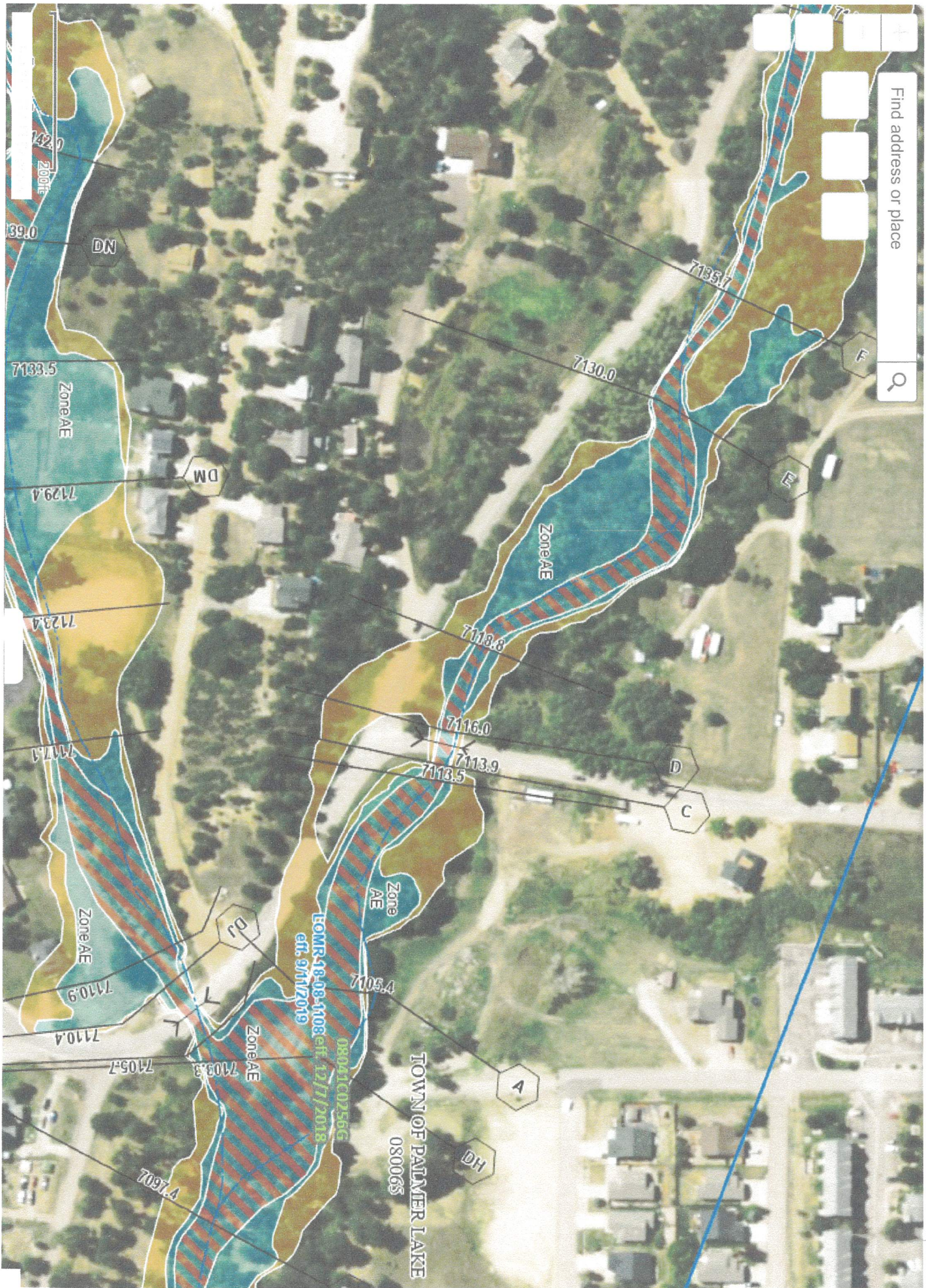
08041C0256G
eff. 12/7/2018

TOWN OF PALMER LAKE
080065

200ft



Find address or place





Find address or place



200ft

TOWN OF PALMER LAKE
080065

LOMR 18-08-4108P
eff. 9/6/2019

08041C02566
eff. 12/7/2018

7074.0

7018.4

DD

DE

DF

7089.6

7097.4

7105.7
7109.3

7110.4

7110.9

Zone AE

7117.1

DL

DK

D1

7116.0

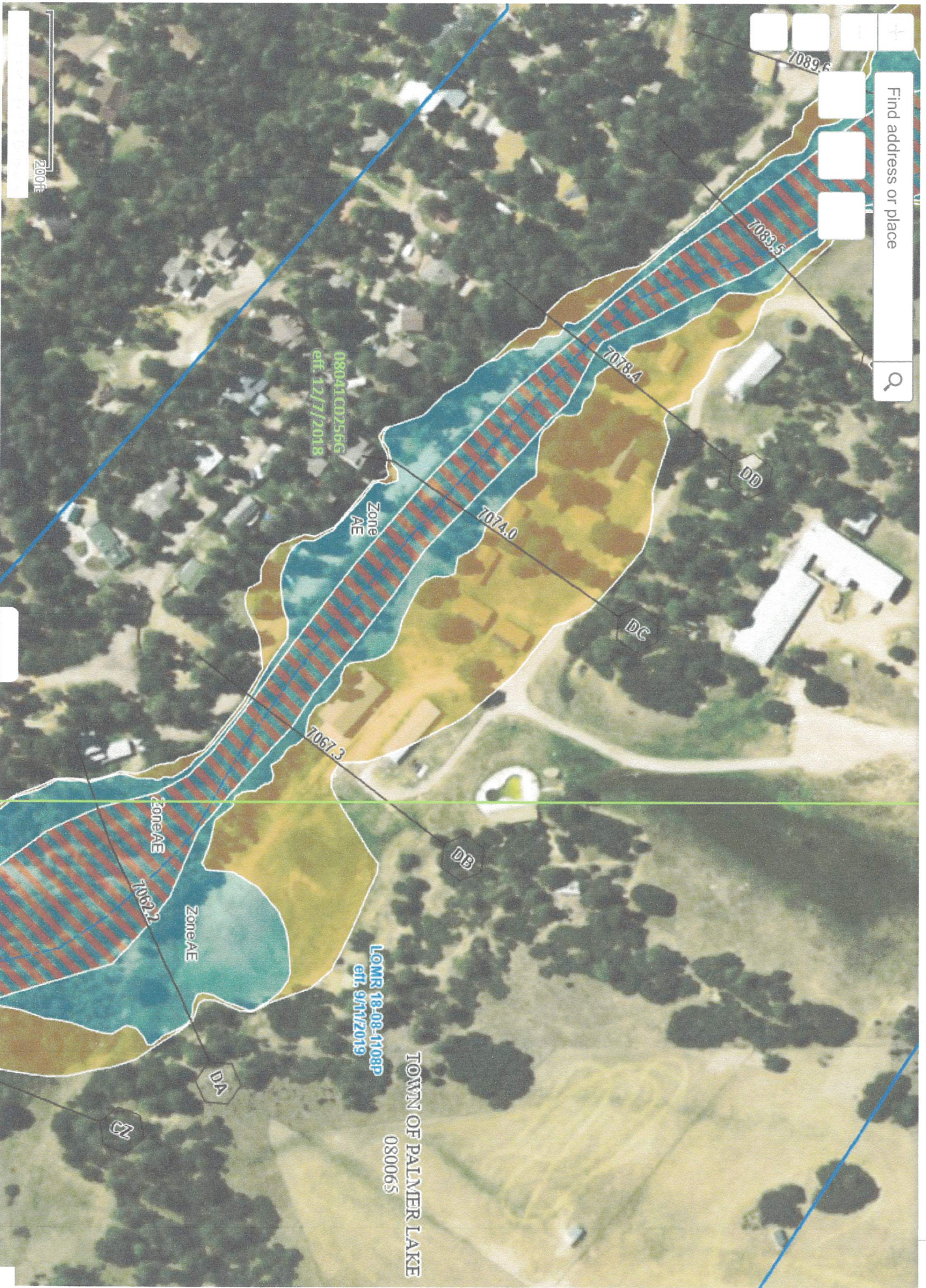


FEMA's National Flood Hazard Layer (NFHL) Viewer

Find address or place



Input fields for address or place search



200ft

08041002566
eff. 12/7/2018

LOMR 18-08-1108P
eff. 9/11/2019

TOWN OF PALMER LAKE
080065

7089.6

7089.7

7088.4

7074.0

7067.3

7062.2

DD

DC

DB

D/A

D

Title 50 –Wildlife and Fisheries

Chapter I –United States Fish and Wildlife Service, Department of the Interior

Subchapter B

–Taking, Possession, Transportation, Sale, Purchase, Barter, Exportation, and Importation of Wildlife and Plants

Part 17 –Endangered and Threatened Wildlife and Plants

Subpart B –Lists

§ 17.11 Endangered and threatened wildlife.

- (a) The list in paragraph (h) of this section contains the wildlife species determined by the Service or the National Marine Fisheries Service (NMFS) of the Department of Commerce’s National Oceanic and Atmospheric Administration (hereafter in this section referred to as “the Services”) to be endangered species or threatened species. It also contains the wildlife species treated as endangered species or threatened species because they are similar in appearance to and may be confused with endangered or threatened species (see §§ 17.50 through 17.52). The “Common name,” “Scientific name,” “Where listed,” and “Status” columns provide regulatory information; together, they identify listed wildlife species within the meaning of the Act and describe where they are protected. When a taxon has more than one entry, the “Where listed” or “Status” column will identify its status in each relevant geographic area. The listing of a particular taxon includes all lower taxonomic units.
- (b) **“Common name” column.** Although common names are included, they cannot be relied upon for identification of any specimen, since they may vary greatly in local usage. In cases where confusion might arise, one or more synonyms are provided in parentheses within the “Common name” column. If a species has been listed as an Evolutionarily Significant Unit (ESU) or a Distinct Vertebrate Population Segment (DPS), the ESU or DPS names will be provided in brackets “[]” following the common name.
- (c) **“Scientific name” column.** The Services use the most recently accepted scientific name. In cases where confusion might arise, one or more synonyms are provided in parentheses within the “Scientific name” column. The Services rely, to the extent practicable, on the Integrated Taxonomic Information System (ITIS) to determine a species’ scientific name. ITIS incorporates the naming principles established by the *International Code of Zoological Nomenclature* (see paragraph (g) of this section). If the scientific name in ITIS differs from the scientific name adopted for use under the Convention on International Trade in Endangered Species of Wild Fauna and Flora (CITES), the CITES nomenclature is provided in brackets “[]” within the “Scientific name” column following the ITIS nomenclature.
- (d) **“Where listed” column.** The “Where listed” column sets forth the geographic area where the species is listed for purposes of the Act. Except when providing a geographic description of a DPS or ESU, or an experimental population designation, “Wherever found” will be used to indicate the Act’s protections apply to all individuals of the species, wherever found.
- (e) **“Status” column.** Within the “Status” column, the following abbreviations are used:

Abbreviation	Regulatory status the abbreviation represents
E	Endangered species.
T	Threatened species.
E (S/A)	Endangered based on similarity of appearance to an existing listed species.
T (S/A)	Threatened based on similarity of appearance to an existing listed species.
XE	Essential experimental population (See subpart H of this part).
XN	Nonessential experimental population (See subpart H of this part).

(f) **"Listing Citations and Applicable Rules" column.** The "Listing Citations and Applicable Rules" column is nonregulatory in nature and is provided for informational and navigational purposes only.

(1) Within the "Listing Citations and Applicable Rules" column, the following superscripts are used:

Superscript	Description of citation or rule
N	NMFS listing citation (NMFS Lead).
J	Both FWS and NMFS listing citation (Joint Jurisdiction).
CH	Critical habitat rule.
4d	Species-specific "4(d)" rule (a rule issued under the authority of section 4(d) of the Act).
10j	Species-specific "10(j)" rule (a rule issued under the authority of section 10(j) of the Act).

(2) Listing citations contain the volume, document starting page number, and publication date of the FEDERAL REGISTER publication(s) in which a species was given status, listed, or reclassified. At least since 1973, these documents have included a statement indicating the basis for the listing, as well as the effective date(s) of the listing or other rules that changed how the species was identified in the List in paragraph (h) of this section.

(3) "Critical habitat" and "Species-specific" rules superscripts provide cross-references to other sections in this part or part 222, 223, or 226 of chapter II of this title where critical habitat and species-specific rules are found. The species-specific superscripts also identify experimental populations. Experimental populations (superscript "10j") are a separate citation, with one of the following symbols in the "Status" column: "XE" for an essential experimental population and "XN" for a nonessential experimental population.

(4) This column is for reference and navigational purposes only. All other appropriate rules in this part, parts 217 through 226 of chapter II of this title, and part 402 of chapter IV of this title apply, if no species-specific rules are referenced. In addition, other rules in this title could relate to such species (for example, port-of-entry requirements). The references in the "Listing Citations and Applicable Rules" column do not comprise a comprehensive list of all regulations that the Services might apply to the species or to the regulations of other Federal agencies or State or local governments.

(g) The Services will rely to the extent practicable on ITIS (<http://www.itis.gov>) and standard references adopted for CITES (<http://cites.org>).

(h) The "List of Endangered and Threatened Wildlife" is provided in the table in this paragraph (h):

Common name	Scientific name	Where listed	Status	Listing citations and applicable rules
Mammals				
Addax	<i>Addax nasomaculatus</i>	Wherever found	E	70 FR 52319, 9/2/2005.
Anoa, lowland	<i>Bubalus depressicornis</i>	Wherever found	E	35 FR 8491, 6/2/1970.
Anoa, mountain	<i>Bubalus quarlesi</i>	Wherever found	E	41 FR 24061, 6/14/1976.

rufomitrat (= *badius* r.) Wherever found E [35 FR 8491](#), 6/2/1970. Monkey, Tonkin snub-nosed *Rhinopithecus avunculus* Wherever found E [41 FR 45990](#), 10/19/1976; [55 FR 39414](#), 9/27/1990. Monkey, woolly spider *Brachyteles arachnoides* Wherever found E [35 FR 8491](#), 6/2/1970. Monkey, yellow-tailed woolly *Lagothrix flavicauda* Wherever found E [41 FR 45990](#), 10/19/1976. Monkey, Yunnan snub-nosed *Rhinopithecus bieti* Wherever found E [55 FR 39414](#), 9/27/1990. Monkey, Zanzibar red colobus *Procolobus* (= *Colobus*) *pennantii* (= *kirki*) *kirki* Wherever found E [35 FR 8491](#), 6/2/1970. Mountain beaver, Point Arena *Aplodontia rufa nigra* Wherever found E [56 FR 64716](#), 12/12/1991. Mouse, Alabama beach *Peromyscus polionotus ammobates* Wherever found E [50 FR 23872](#), 6/6/1985; [50 CFR 17.95\(a\)](#).^{CH} Mouse, Anastasia Island beach *Peromyscus polionotus phasma* Wherever found E [54 FR 20598](#), 5/12/1989. Mouse, Australian native *Notomys aquilo* Wherever found E [41 FR 24062](#), 6/14/1976. Mouse, Australian native *Zyzomys pedunculatus* Wherever found E [41 FR 24062](#), 6/14/1976. Mouse, Choctawhatchee beach *Peromyscus polionotus allophrys* Wherever found E [50 FR 23872](#), 6/6/1985; [50 CFR 17.95\(a\)](#).^{CH} Mouse, Field's *Pseudomys fieldi* Wherever found E [35 FR 18319](#), 12/2/1970. Mouse, Gould's *Pseudomys gouldii* Wherever found E [38 FR 14678](#), 6/4/1973. Mouse, Key Largo cotton *Peromyscus gossypinus allapaticola* Wherever found E [48 FR 43040](#), 9/21/1983; [49 FR 34504](#), 8/31/1984. Mouse, New Holland *Pseudomys novaehollandiae* Wherever found E [35 FR 18319](#), 12/2/1970. Mouse, New Mexico meadow jumping *Zapus hudsonius luteus* Wherever found E [79 FR 33119](#), 6/10/2014; [50 CFR 17.95\(a\)](#).^{CH} Mouse, Pacific pocket *Perognathus longimembris pacificus* Wherever found E [59 FR 5306](#), 2/3/1994; [59 FR 49752](#), 9/29/1994. Mouse, Perdido Key beach *Peromyscus polionotus trissyllepsis* Wherever found E [50 FR 23872](#), 6/6/1985; [50 CFR 17.95\(a\)](#).^{CH} Mouse, Preble's meadow jumping *Zapus hudsonius preblei* Wherever found T [63 FR 26517](#), 5/13/1998; [78 FR 31679](#), 5/24/2013; [50 CFR 17.40\(l\)](#); ^{4d} [50 CFR 17.95\(a\)](#).^{CH} Mouse, salt marsh harvest *Reithrodontomys raviventris* Wherever found E [35 FR 16047](#), 10/13/1970. Mouse, Shark Bay *Pseudomys praeconis* Wherever found E [35 FR 18319](#), 12/2/1970. Mouse, Shortridge's *Pseudomys shortridgei* Wherever found E [35 FR 18319](#), 12/2/1970. Mouse, smoky *Pseudomys fumeus* Wherever found E [35 FR 18319](#), 12/2/1970. Mouse, southeastern beach *Peromyscus polionotus niveiventris* Wherever found T [54 FR 20598](#), 5/12/1989. Mouse, St. Andrew beach *Peromyscus polionotus peninsularis* Wherever found E [63 FR 70053](#), 12/18/1998; [50 CFR 17.95\(a\)](#).^{CH} Mouse, western *Pseudomys occidentalis* Wherever found E [35 FR 18319](#),

Preble's Meadow Jumping Mouse



ASSESSING HABITAT QUALITY FOR PRIORITY WILDLIFE SPECIES IN COLORADO WETLANDS



© ROB SCHORR, CNHP

Preble's meadow jumping mouse (*Zapus hudsonius preblei*, Family *Dipodidae*) is a rare small mammal that lives in dense riparian vegetation along the Front Range.

Species Description

Identification

Preble's meadow jumping mice grow to approximately nine inches in length, including their five and a half-inch tails. They are mostly nocturnal and hibernate in upland areas for eight months of the year, making them difficult to observe.

Preferred Habitats

During summer months, the most important wetland types occupied by Preble's meadow jumping mice include riparian areas and adjacent wet meadows. During the summer, they prefer dense shrub, grass and forb ground cover along creeks, rivers, and associated waterbodies. From early fall through the spring, they hibernate underground in burrows that are typically at the base of vegetation and have a northerly aspect.

Diet

The diet of Preble's meadow jumping mice includes, but is probably not limited to, grass seeds, invertebrates, fungi, and insect larvae.

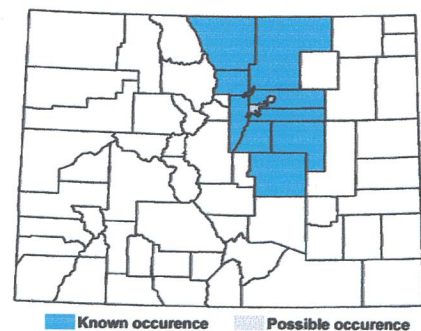
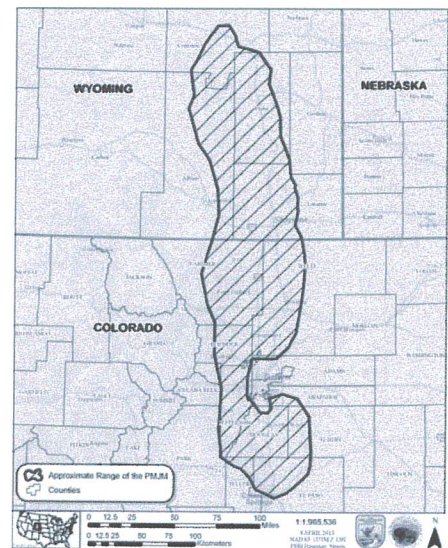
Conservation Status

The Preble's meadow jumping mouse is listed as threatened by the U.S. Fish and Wildlife Service (USFWS 1998). In Colorado, they are listed as a threatened, Tier 1, Species of Greatest Conservation Need (CPW 2015). The Colorado Natural Heritage Program considers the subspecies to be globally-imperiled (G5 T2) and critically-imperiled with the state (S1).

Species Distribution

Range

Preble's meadow jumping mice occur only in Colorado and Wyoming. In Colorado, they are known to occupy the counties along the Front Range from the Wyoming border through El Paso County.



Full species range map from USFWS (2004). Colorado map based on Grunau et al. (1999), and Schorr (2001).

Version Date: November 2020

Preferred Habitat Conditions

Distance from riparian habitat patch to water	<10 yards
Dominant vegetation	a combination of grasses, shrubs, forbs, and trees
Habitat size	>60 acres
Herbaceous vegetation height	>20–40 inches
Landscape context	ungrazed
Percent ground cover	densely vegetated; between grasses, forbs, and shrubs, close to 100%
Species richness	>20 plant species

Management Recommendations

This fact sheet contains easy-to-use guidelines for understanding habitat needs of Colorado Parks and Wildlife priority wetland-dependent wildlife. Biologists with expertise in Preble's meadow jumping mice have suggested numerous practical steps that can be taken to improve habitat quality for this species.

Hydrology

- Maintain or restore natural regime.
- Control erosion within stream corridor.

Vegetation

- Provide, restore, and enhance riparian vegetation.
- Provide, restore, and enhance upland shrub.
- Provide, restore, and enhance grassland habitat.
- Control noxious weeds, avoiding May through October.
- Consider providing woody debris.

Conservation

- Use best strategies to minimize disturbance.



© ROB SCHORR, CNHP

Acknowledgements

Robert Schorr (Colorado Natural Heritage Program) reviewed an earlier version and provided input on preferred habitat conditions.

Suggested Reading and Citations

- CPW (Colorado Parks and Wildlife). 2015. State Wildlife Action Plan: A Strategy for Conserving Wildlife in Colorado. Denver, Colorado.
- Grunau, L., R. Schorr, D. Green, B. Rosenlund, C. Pague, and J. Armstrong. 1999. Conservation and management plan for the Preble's meadow jumping mouse on the U. S. Air Force Academy. Colorado Natural Heritage Program unpublished report to the Natural Resources Branch, U.S. Air Force Academy.
- Meaney, C. A., A. K. Ruggles, B. C. Lubow, N. W. Clippinger. 2003. Abundance, survival, and hibernation of Preble's meadow jumping mice (*Zapus hudsonius preblei*) in Boulder County, Colorado. *Southwestern Naturalist* 48: 610-623.
- Schorr, R. A. 2001. Meadow jumping mice (*Zapus hudsonius preblei*) on the U.S. Air Force Academy, El Paso County, Colorado. Colorado Natural Heritage Program unpublished report to the Natural Resources Branch, U.S. Air Force Academy.
- Schorr, R. A. 2003. Meadow jumping mice (*Zapus hudsonius preblei*) on the U.S. Air Force Academy, El Paso County, Colorado: Populations, Movement and Habitat from 2000-2002. Colorado Natural Heritage Program unpublished report to the Natural Resources Branch, U.S. Air Force Academy.
- Trainor, A. M., T. M. Shenk, and K. R. Wilson. 2007. Microhabitat characteristics of Preble's meadow jumping mouse high-use areas. *Journal of Wildlife Management* 71: 469-477.
- Trainor, A. M., T. M. Shenk, and K. R. Wilson. 2012. Spatial, temporal, and biological factors associated with Preble's meadow jumping mouse (*Zapus hudsonius preblei*) home range. *Journal of Mammalogy* 93: 429-438.
- U.S. Fish and Wildlife Service (USFWS). 2013. Endangered and threatened wildlife and plants: 12-month finding on two petitions to delist the Preble's meadow jumping mouse. *Federal Register* 78: 31680-31712.
- USFWS. 2015. Draft recovery plan Preble's meadow jumping mouse (*Zapus hudsonius preblei*). U.S. Fish and Wildlife Service, Region 6, Lakewood, Colorado.



© ROB SCHORR, CNHP



© M. CANESTORP



© U.S. FISH AND WILDLIFE SERVICE



© ROB SCHORR, CNHP

DISCLAIMER: This scorecard is designed specifically for the Colorado Parks and Wildlife (CPW) Wetland Wildlife Conservation Program. It does not replace protocols required by U. S. Fish and Wildlife Service (USFWS). Please contact USFWS regarding questions about their required protocols for species listed under the Endangered Species Act.

Habitat Scorecard for Preble's Meadow Jumping Mouse (v. Nov 2020)

Assessment of habitat before and after restoration or management actions

Project Name: _____ Project Area (acres): _____ Habitat Area (acres): _____

Size of Contiguous Habitat outside Project Area (acres): _____ Ownership (circle): Same / Different / Conservation Easement

Scorecard Instructions: Enter one value that best describes early to mid-summer conditions of each habitat variable, using the numbers in the value column. Habitat variables are in shaded boxes; ranges of condition are directly below each variable. **If condition is outside range or is not described, enter a zero.**

Project Area and Habitat Area: The project area includes the entire area affected by the project. The habitat is the area that will provide (in case of pre-project) or does provide (post-project) habitat for each potential target species within the project area. The habitat area may be the same size as the project area or it might be smaller and it may be defined differently for different target species. If there is contiguous habitat area outside the project area, note the size and whether the ownership of the contiguous areas is the same or different and whether it is under conservation easement or other habitat protection. If the habitat area within your project area is noncontiguous and/or if sections are in very different conditions, consider using multiple scorecards so that each scorecard represents the general conditions. If you use multiple scorecards, identify each habitat area on a map.

Key habitat variable and conditions	Value	Pre-Project	Expected Post-Project	Actual Post-Project
Date of assessment				
Dominant vegetation				
Combination of sedges, grasses, annual and perennial forbs and dense shrubs	13.2			
Combination of sedges, grasses, and dense shrubs	8.8			
Combination of sedges, grasses, and more open shrubs	4.4			
Percent grass cover				
>40%	13.2			
>20 – 40%	8.8			
10 – 20%	4.4			
Percent shrub cover				
>80%	13.2			
>50 – 80%	8.8			
5 – 50%	4.4			
Distance from habitat patch to water				
<10 yards	12.5			
10 – 20 yards	8.4			
>20 – 40 yards	4.2			
Species richness (number of species in vegetation community)				
>20 species	11.9			
10 – 20 species	7.9			
<10 species	4.0			
Habitat size				
>60 acres	10.6			
50 – 60 acres	7.0			
<50 acres	3.5			
Percent forb cover				
>35 – 50%	10.4			
>15 – 35%	6.9			
5 – 15%	3.5			

Continued on next page.

Habitat Scorecard for Preble's Meadow Jumping Mouse (v. Nov 2020)

Assessment of habitat before and after restoration or management actions

Preble's Meadow Jumping Mouse Scorecard *continued*.

Key habitat variable and conditions	Value	Pre-Project	Expected Post-Project	Actual Post-Project
Height of herbaceous vegetation (grasses and forbs)				
>20 – 40 inches	9.9			
8 – 20 inches	6.6			
<8 inches	3.3			
Land use within 100 yards				
Ungrazed	5.1			
Grazed lightly	3.4			
Grazed moderately	1.7			
Total (of 100 possible): add all numbers in before or after columns				