



N.E.S. Inc.
619 N. Cascade Avenue, Suite 200
Colorado Springs, CO 80903

Tel. 719.471.0073
Fax 719.471.0267

www.nescolorado.com

© 2012. All Rights Reserved.

PLANNER / LANDSCAPE ARCHITECT

IN ASSOCIATION WITH

ELEPHANT ROCK VILLAS

PROJECT INFO

DATE: 8.15.22
PROJECT MGR: C.LIEBER
PREPARED BY: C.HELMELINGER

STAMP

ISSUE INFO

DATE: BY: DESCRIPTION:

ISSUE / REVISION

SHEET TITLE

SITE PLAN

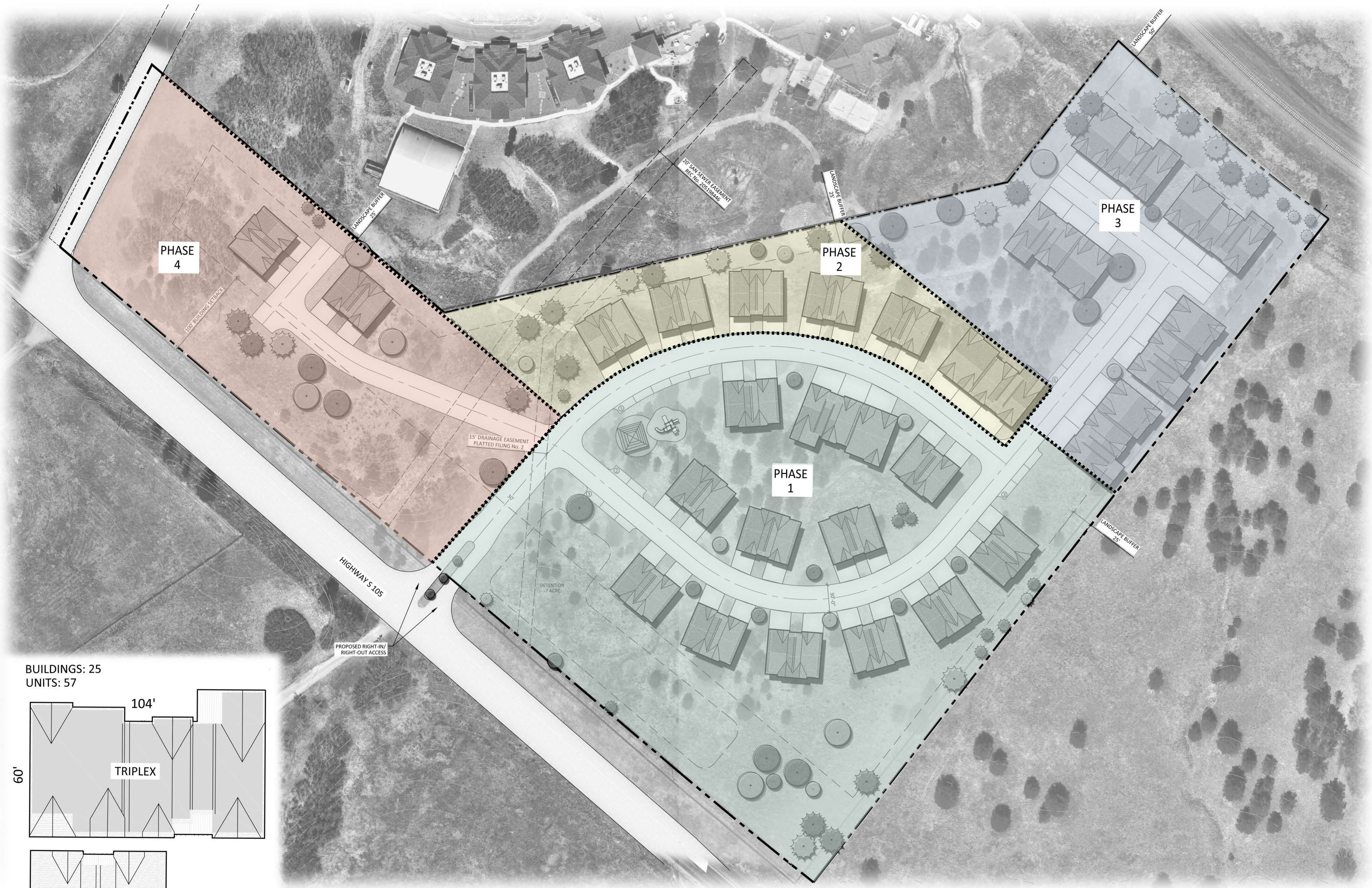
SHEET NUMBER

1

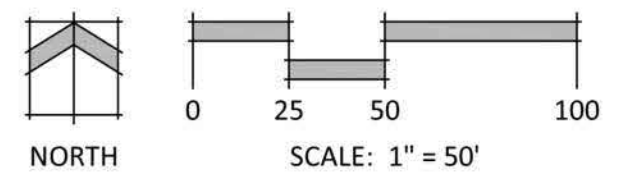
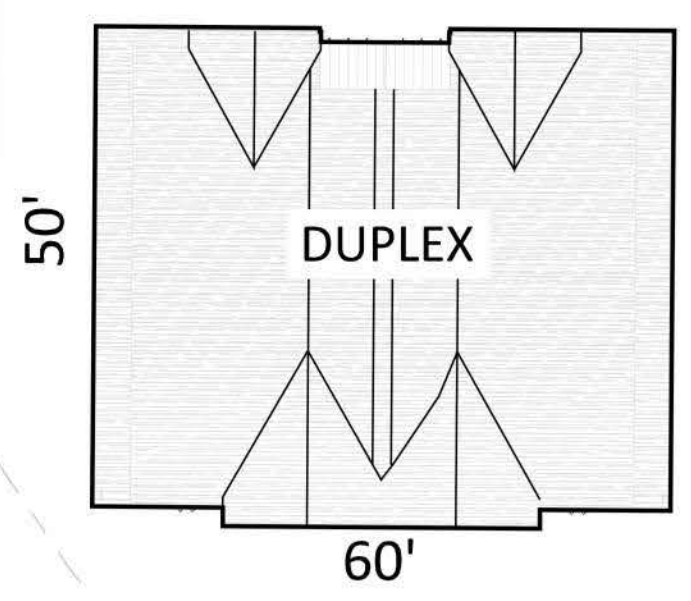
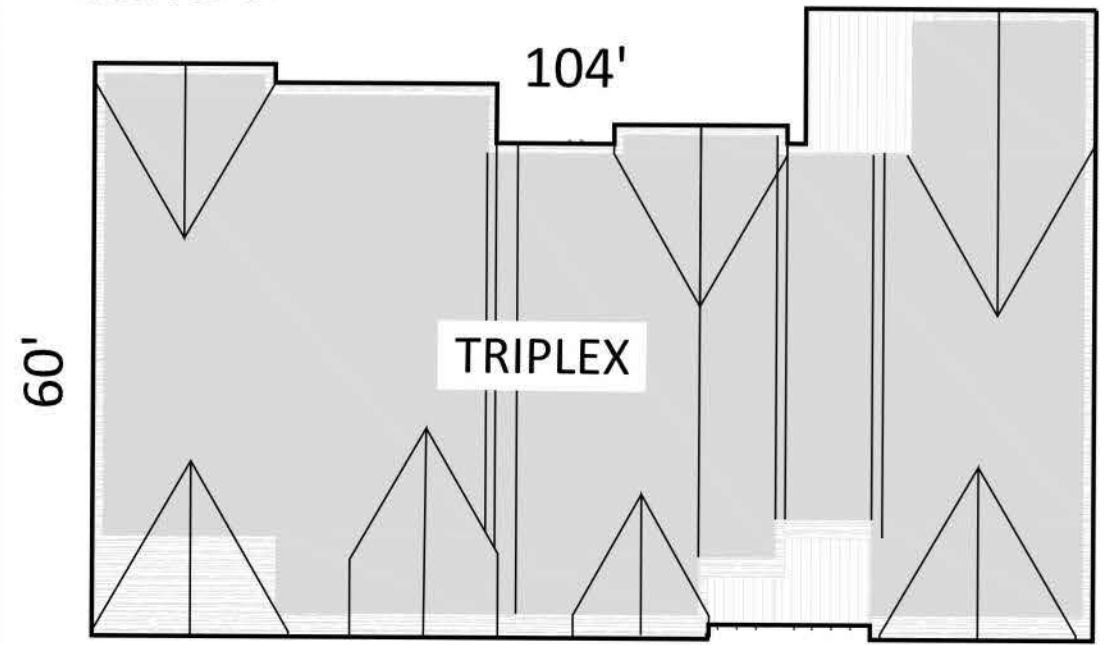
1 OF 1

PLAN FILE #

CPC #



BUILDINGS: 25
UNITS: 57



P:\Dorman Properties, LLC\Palmer Lake\Townhomes\Drawings\Planning\SD\Palmer Lake Townhomes SD.dwg [Site Plan (2)] 8/15/2022 12:01:36 PM chelmlinger