

**CONTRACT PLANS COMPONENTS**

ROADWAY PLANS  
SIGNING AND PAVEMENT MARKING PLANS  
LIGHTING PLANS

**INDEX OF LIGHTING PLANS**

SHEET NO.	SHEET DESCRIPTION
L-1	KEY SHEET
L-2	LIGHTING NOTES
L-3	POLE DATA TABLE AND LEGEND
L-4 - L-5	LIGHTING PLAN

**STATE OF FLORIDA  
DEPARTMENT OF TRANSPORTATION**

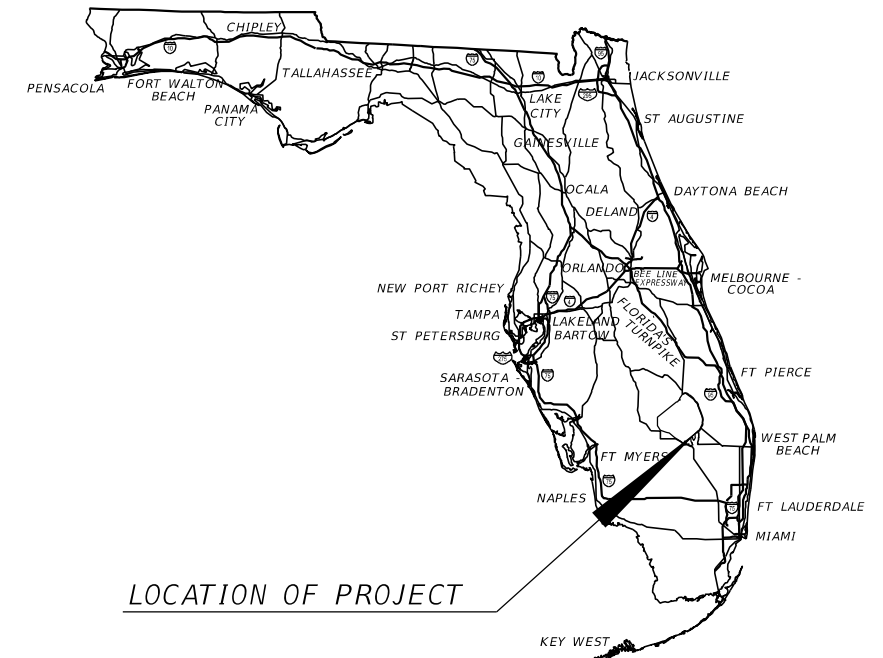
**LIGHTING PLANS**

**FINANCIAL PROJECT ID 447664-1-52-01  
(FEDERAL FUNDS)**

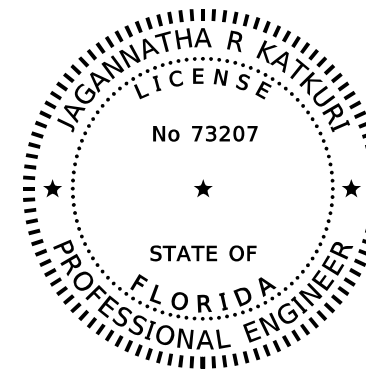
**PALM BEACH COUNTY (93130)**

**STATE ROAD NO. 15 (EAST MAIN ST.)  
RESURFACING, RESTORATION AND REHABILITATION  
FROM ANNONA ST. TO SR-700/CONNERS HWY.**

<b>PROJECT LOCATION URL:</b>	<a href="https://tinyurl.com/2s4f2t6y">https://tinyurl.com/2s4f2t6y</a>
<b>PROJECT LIMITS:</b>	BEGIN MP 10.871 - END MP 14.213
<b>EXCEPTIONS:</b>	NONE
<b>BRIDGE LIMITS:</b>	NONE
<b>RAILROAD CROSSING:</b>	SOUTH CENTRAL FLORIDA EXPRESS CROSSING NO. 272282-T (MP 12.702) AND US SUGAR RR CROSSING NO. 853360-D (MP 12.942)



LOCATION OF PROJECT



THIS ITEM HAS BEEN DIGITALLY  
SIGNED AND SEALED BY

ON THE DATE ADJACENT TO THE SEAL

PRINTED COPIES OF THIS DOCUMENT ARE  
NOT CONSIDERED SIGNED AND SEALED  
AND THE SIGNATURE MUST BE VERIFIED  
ON ANY ELECTRONIC COPIES.

THE ABOVE NAMED PROFESSIONAL IS  
RESPONSIBLE FOR THE FOLLOWING SHEETS  
IN ACCORDANCE WITH RULE 61G15-23.004, F.A.C.

**LIGHTING PLANS  
ENGINEER OF RECORD:**

JAGANNATHA R KATKURI, P.E.  
P.E. LICENSE NUMBER 73207  
CONSTRUCTIVE ENGINEERING, INC.  
8461 LAKE WORTH RD, SUITE 227  
LAKE WORTH, FL 33467  
(561) 713-1163  
CONTRACT NO.: CAG40  
VENDOR NO.: F814232103

**FDOT PROJECT MANAGER:**

THUC H. LE, P.E.

**GOVERNING STANDARD PLANS:**

Florida Department of Transportation, FY 2024-25 Standard Plans for Road and Bridge Construction and applicable Interim Revisions (IRs).

Standard Plans for Road Construction and associated IRs are available at the following website: <http://www.fdot.gov/design/standardplans>

APPLICABLE IRs: N/A

**GOVERNING STANDARD SPECIFICATIONS:**

Florida Department of Transportation, FY 2024-25 Standard Specifications for Road and Bridge Construction at the following website: <http://www.fdot.gov/programmanagement/Implemented/SpecBooks>

CONSTRUCTION CONTRACT NO.	FISCAL YEAR	SHEET NO.
TBD	25	L-1

GENERAL NOTES  
=====

1. THE AGENCY RESPONSIBLE FOR THE ROADWAY LIGHTING SYSTEM IS CITY OF PAHOKEE.
2. REFER TO THE UTILITY ADJUSTMENT SHEET IN THE ROADWAY PLANS FOR UTILITY OWNERS AND AGENCY CONTACT INFORMATION.

12/7/2023 4:02:42 PM inter F:\worksets\FDOT\44766415201\Lighting\GNWLT01.dgn

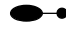
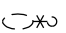
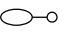
THE OFFICIAL RECORD OF THIS SHEET IS THE ELECTRONIC FILE DIGITALLY SIGNED AND SEALED UNDER RULE 61G15-23.004, F.A.C.

REVISIONS				PROFESSIONAL TYPE	STATE OF FLORIDA DEPARTMENT OF TRANSPORTATION			<i>LIGHTING NOTES</i>	SHEET NO.
DATE	DESCRIPTION	DATE	DESCRIPTION	JAGANNATHA R KATKURI, P.E. LICENSE NUMBER: 73207 CONSTRUCTIVE ENGINEERING, INC 8461 LKAE WORTH RD, SUITE 227 LAKE WORTH, FL 33467	ROAD NO.	COUNTY	FINANCIAL PROJECT ID		L-2
						SR 15	PALM BEACH		

**POLE DATA**

POLE NO.	CIRCUIT	STATION	OFFSET	SIDE	N/E COORDINATES (X/Y)	POLE OWNER	MAINTAINING AGENCY	POLE TYPE	DIST. OR ARM	LUMINAIRE WATTAGE	LUMINAIRE TYPE	LUMINAIRE MAKE/MODEL	LUMEN OUTPUT	IES DISTRIBUTION PATTERN	CCT	MOUNTING HEIGHT	TILT ANGLE	INPUT WATTAGE	INPUT VOLTAGE	LOAD CENTER NUMBER	NUMBER OF LUMINAIRES	CIRCUIT NUMBER	FOUNDATION TYPE	ARM CONFIGURATION	POLE DETAILS	PAY ITEM	
1	FPL	120+54.99	29.81'	RT	771765.00 /911792.00	FPL	FPL	FPL	8	121	LED	AEL/AUTOBAHN ATB2	16427.0	MEDIUM TYPE IV	3K	22.5	-	121	MVOLT	FPL	1	FPL	STANDARD	SINGLE	STANDARD POLE	BY FPL	
2	FPL	121+74.55	28.11'	LT	771756.58 /911924.58	FPL	FPL	FPL	8	121	LED	AEL/AUTOBAHN ATB2	16427.0	MEDIUM TYPE IV	3K	22.5	-	121	MVOLT	FPL	1	FPL	STANDARD	SINGLE	STANDARD POLE	BY FPL	
3	FPL	522+76.49	27.50'	RT	772371.21 /912875.38	FPL	FPL	FPL (EXIST)	8	121	LED	AEL/AUTOBAHN ATB2	16427.0	MEDIUM TYPE IV	3K	EXIST	-	121	MVOLT	FPL	1	FPL	STANDARD	EXIST	EXIST POLE	BY FPL	
4	FPL	523+90.12	24.29'	LT	772387.20 /912999.22	FPL	FPL	FPL	8	121	LED	AEL/AUTOBAHN ATB2	16427.0	MEDIUM TYPE IV	3K	22.5	-	121	MVOLT	FPL	1	FPL	STANDARD	SINGLE	STANDARD POLE	BY FPL	

**LEGEND**

- | SYMBOL  | DESCRIPTION   |
|---|---|
|  | NEW LED LUMINAIRE (121 W) ON A SHOULDER MOUNTED FPL POLE WITH 8 FT ARM, DESIGNED FOR IES TYPE IV, MEDIUM DISTRIBUTION PRODUCING A MINIMUM OF 16,427 LUMENS OUTPUT, MAX CANDELA 11395, COLOR TEMPERATURE 3000K, WIRED FOR MVOLT OPERATION. THE LUMINAIRE USED AS BASIS FOR DESIGN WAS AUTOBAHN WITH PHOTOMETRIC FILE ATB2 P40X_MVOLT_R4_3K.IES.                          |
|  | REMOVE EXISTING LUMINAIRE ON POWER POLE   |
|  | RETROFIT EXIST LUMINAIRE WITH NEW LED LUMINAIRE (121 W) ON EXISTING SHOULDER MOUNTED FPL POLE WITH 8 FT ARM WITH 16,427 INITIAL LUMENS OUTPUT, DESIGNED FOR ROADWAY TYPE IV, MEDIUM DISTRIBUTION, MAX CANDELA 11,395 COLOR TEMPERATURE 3000K WIRED FOR MVOLT OPERATION. THE LUMINAIRE USED AS BASIS FOR DESIGN WAS AUTOBAHN PHOTOMETRIC FILE ATB2 P40X_MVOLT_R4_3K.IES. |

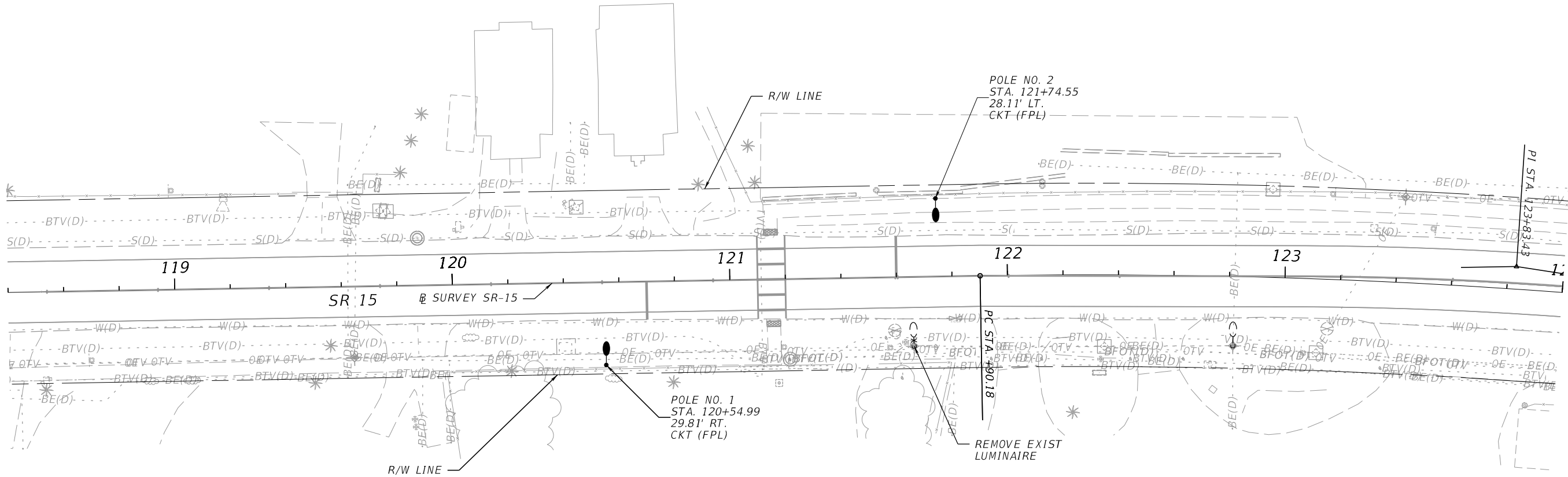
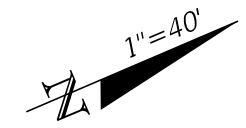
LIGHTING DESIGN CRITERIA  
MIDBLOCK CROSSING  
AVERAGE INITIAL ILLUMINANCE--1.5 FOOT CANDLES STANDARD  
WIND SPEED-----160 MPH

12/7/2023 4:02:44 PM iinter \\nasaeer\F\Worsets\VDOT\4476641\Lighting\PLD\LT01.dgn

THE OFFICIAL RECORD OF THIS SHEET IS THE ELECTRONIC FILE DIGITALLY SIGNED AND SEALED UNDER RULE 61G15-23.004, F.A.C.

REVISIONS				PROFESSIONAL TYPE		STATE OF FLORIDA DEPARTMENT OF TRANSPORTATION			SHEET NO.
DATE	DESCRIPTION	DATE	DESCRIPTION	JAGANNATHA R KATKURI, P.E. LICENSE NUMBER: 73207 CONSTRUCTIVE ENGINEERING, INC. 8461 LAKE WORTH RD, SUITE 227 LAKE WORTH, FL 33467		ROAD NO.	COUNTY	FINANCIAL PROJECT ID	
						SR 15	PALM BEACH	447664-1-52-01	

**POLE DATA AND LEGEND**

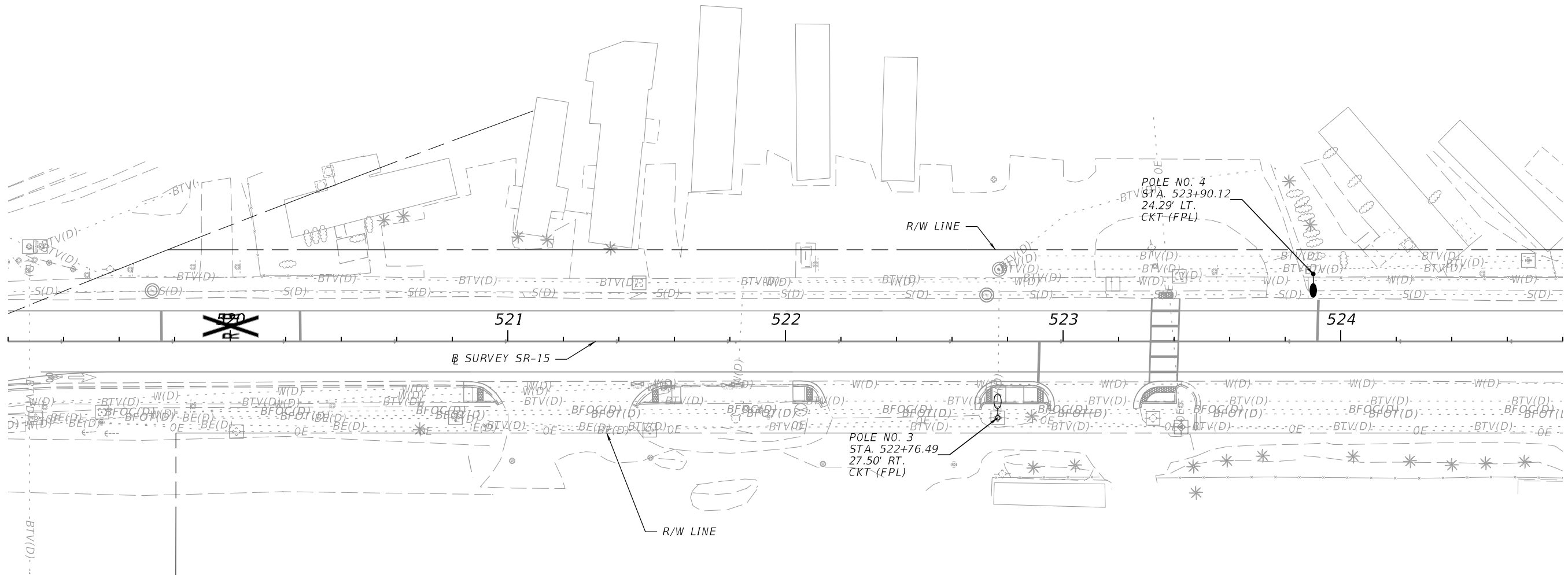
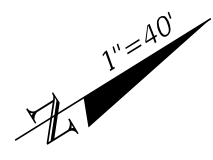


12/7/2023 4:02:57 PM inter \\nassee\F\Worksets\VDOT\44766415201\Lighting\PLAN\L101.dgn

THE OFFICIAL RECORD OF THIS SHEET IS THE ELECTRONIC FILE DIGITALLY SIGNED AND SEALED UNDER RULE 61G15-23.004, F.A.C.

REVISIONS				PROFESSIONAL TYPE	STATE OF FLORIDA DEPARTMENT OF TRANSPORTATION			SHEET NO.
DATE	DESCRIPTION	DATE	DESCRIPTION		ROAD NO.	COUNTY	FINANCIAL PROJECT ID	
				JAGANNATHA R KATKURI, P.E. LICENSE NUMBER: 73207 CONSTRUCTIVE ENGINEERING, INC. 8461 LAKE WORTH RD, SUITE 227 LAKE WORTH, FL 33467	SR 15	PALM BEACH	447664-1-52-01	L-4

**LIGHTING PLAN**



12/7/2023 4:03:01 PM inter \\nassee\F\Worksets\VDOT\44766415201\Lighting\PLANL01.dgn

THE OFFICIAL RECORD OF THIS SHEET IS THE ELECTRONIC FILE DIGITALLY SIGNED AND SEALED UNDER RULE 61G15-23.004, F.A.C.

REVISIONS				PROFESSIONAL TYPE	STATE OF FLORIDA DEPARTMENT OF TRANSPORTATION			SHEET NO.
DATE	DESCRIPTION	DATE	DESCRIPTION		ROAD NO.	COUNTY	FINANCIAL PROJECT ID	
				JAGANNATHA R KATKURI, P.E. LICENSE NUMBER: 73207 CONSTRUCTIVE ENGINEERING, INC. 8461 LAKE WORTH RD, SUITE 227 LAKE WORTH, FL 33467	SR 15	PALM BEACH	447664-1-52-01	L-5

*LIGHTING PLAN*