



ROSSO
Site Development

James T. Lewis Jr. LAP Coordinator Palm Beach Operations

1302 South J Street
Lake Worth, FL 33460



Ph: 561-689-0889
Fax: 561-689-2851

CHANGE ORDER BREAKDOWN

Description of work: Revision #2 Per Response To RFI #17
48" Storm Manhole

CO #: 11

EQUIPMENT					
#	Description	Qty	Unit	Unit Cost	Total Cost
1	Loader		HR	\$62.50	\$0.00
2	Tractor		HR	\$40.38	\$0.00
3	Roller		HR	\$56.12	\$0.00
4	Mixer		HR	\$202.61	\$0.00
5	Grader		HR	\$79.95	\$0.00
6	Backhoe		HR	\$93.41	\$0.00
7	Water Truck		HR	\$37.98	\$0.00
8	Dozer		HR	\$73.93	\$0.00
9	Paver		HR	\$61.50	\$0.00
10	Paving Roller		HR	\$40.38	\$0.00
11	Broom		HR	\$49.97	\$0.00
12	Excavator (30,000 lb)		HR	\$109.04	\$0.00
13	Excavator (70,000 lb)		HR	\$169.32	\$0.00
14	Tamp		HR	\$19.50	\$0.00
15	Saw		HR	\$19.50	\$0.00
16	Pick-Up Truck		HR	\$32.46	\$0.00
17	Dump Truck		HR	\$65.00	\$0.00
18	Curb Machine		HR	\$58.75	\$0.00
19	Pick up	160	HR	\$26.52	\$4,243.20

Equipment Subtotal \$4,243.20
Markup 0.150 \$636.48
EQUIPMENT TOTAL: \$4,879.68

LABOR					
#	Description				
1	Superintendent	160.0	HR	\$64.29	\$10,286.40
2	Foreman (w/ Pick-Up)		HR	\$44.21	\$0.00
3	Operator-Road Crew		HR	\$38.06	\$0.00
4	Laborer-Road Crew		HR	\$20.79	\$0.00
5	Operator-Underground Crew		HR	\$36.24	\$0.00
6	Pipe Layer, Tailman, Laborer-Underground Crew		HR	\$26.32	\$0.00
7	Curb Machine Operator-Concrete Crew		HR	\$43.50	\$0.00
8	Finisher-Concrete Crew		HR	\$32.61	\$0.00
9	Former/Laborer-Concrete Crew		HR	\$23.65	\$0.00
10			HR	\$26.52	\$0.00
11			HR		\$0.00

Labor Subtotal **\$10,286.40**
Burden 0.5146 \$5,293.38
Markup 0.150 \$1,542.96
LABOR TOTAL: \$17,122.74

MATERIAL					
#	Description	Qty	Unit	Unit Cost	Total Cost
1			LS		\$0.00
2			LS		\$0.00
3					\$0.00
4					\$0.00
5					\$0.00
6					\$0.00
7					\$0.00
Material Subtotal					\$0.00
Markup 0.175					\$0.00
MATERIAL TOTAL:					\$0.00

SUBCONTRACTORS					
#	Description	Qty	Unit	Unit Cost	Total Cost
1	Johnson Davis	1	LS	\$5,020.48	\$5,020.48
2		1	LS		\$0.00
3		1	LS		\$0.00
4		1	LS		\$0.00
5		1	LS		\$0.00
6		1	LS		\$0.00
7		1	LS		\$0.00
Subcontractor Subtotal					\$5,020.48
Markup 0.05					\$251.02
SUBCONTRACTOR TOTAL:					\$5,271.50

Equipment Total: \$4,879.68
Labor Total: \$17,122.74
Material Total: \$0.00
Subcontractors Total: \$5,271.50

Bond & General Liability Insurance: \$568.36
MOT: \$0.00
Total: \$27,842.29



CHANGE ORDER REQUEST

Date: 4/21/2022
J-D Project # : 41792
J-D COR Proposal #: 13

Rosso Site Development
1302 South J Street
Lake Worth, FL 33460
Attn: James Washington

Project: **Barfield Hwy**
RE: **Drainage Revision**

Furnish & Install Drainage Structure S-123B & The buy out of original premade Drainage Structure 123A.

The following is our cost summary for work performed to; Furnish & Install new proposed drainage structure S-123B. The buyout of premade structure S-123A, following the additional changes resulting from the AT&T duct bank. L&E to install S-123B.

1	Labor	1	LS	\$793.60	\$793.60
2	Equipment	1	LS	\$617.83	617.826
3	Material	1	LS	\$3,609.06	\$3,609.06
4	Subcontractors	1	LS	\$0.00	\$0.00

Total Amount of Change Order: \$5,020.48

Total Amount of Days Added to The Contract:

Please review and forward to the responsible parties for authorization.
As always, should there be any questions, please feel free to contact our office.

Sincerely,

Chad Rawlinson

Chad Rawlinson
Project Manager



Johnson-Davis Inc.

Johnson-Davis Inc.

Job Name: Barfield Hwy Date: 3/2/2022
 JD Job #: 41792
 Description of Work: Drainage Revision 2 COR#: 13

Labor: To Install Structure S-123B

Name	Position	Standard Hours	Overtime Hours	Standard Rate	Overtime Rate	Total
Superintendent		2		\$ 69.26	\$ 103.89	\$ 138.52
Foreman	Foreman	2		\$ 43.09	\$ 64.63	\$ 86.18
Operator - Excavator	Oper-Exc	2		\$ 25.45	\$ 38.18	\$ 50.91
Operator - Loader	Oper-Ldr	2		\$ 21.29	\$ 31.93	\$ 42.58
Pipe Layer	PL	2		\$ 23.95	\$ 35.92	\$ 47.89
Skilled Laborer	SL	2		\$ 18.75	\$ 28.12	\$ 37.50
Skilled Laborer	SL	2		\$ 18.75	\$ 28.12	\$ 37.50
Skilled Laborer	SL	2		\$ 18.75	\$ 28.12	\$ 37.50
0	0	2		\$ -	\$ -	\$ -
				\$ -	\$ -	\$ -
				\$ -	\$ -	\$ -

Labor Subtotal \$ 478.56
 Burden 0.442 \$ 211.52
 Markup on Labor 15.0% \$ 103.51
Labor Total \$ 793.60

Equipment: To Install Structure S-123B

Description	Qty	Hours	Rate	Total
Superintendent Vehicle	1	2	\$ 21.24	\$ 42.48
Foreman Truck with Hand Tools	1	2	\$ 18.56	\$ 37.12
20-55 Liebherr R954 C HD Excavator	1	2	\$ 172.05	\$ 344.10
30-28 Volvo L90D	1	2	\$ 50.40	\$ 100.80
Tamper	1	2	\$ 6.37	\$ 12.74
			\$ -	\$ -
			\$ -	\$ -
			\$ -	\$ -
			\$ -	\$ -
			\$ -	\$ -

Equipment Subtotal: \$ 537.24
 Markup on Equipment 15.0% \$ 80.59
Equipment Total \$ 617.83

Material

Description	Qty	Unit	Rate	Total
Drainage Structure S-123A	1	EA	\$ 1,550.00	\$ 1,550.00
New Drainage Structure S-123B	1	EA	\$ 1,383.00	\$ 1,383.00
			\$ -	\$ -
			\$ -	\$ -
			\$ -	\$ -
			\$ -	\$ -
			\$ -	\$ -
			\$ -	\$ -
			\$ -	\$ -
			\$ -	\$ -

Material Subtotal: \$ 2,933.00
 Tax 7% \$ 205.31
 Markup on Material 15.0% \$ 470.75
Material Total \$ 3,609.06

Subcontractor

Description	Qty	Unit	Rate	Total
				\$ -
				\$ -

Subcontractor Subtotal: \$ -
 Markup on Subcontractors 10.0% \$ -
Subcontractor Total \$ -

Total: \$ 5,020.48

Comments:



JOHNSON-DAVIS INC.

Contractors

604 HILLBRATH DRIVE

LANTANA, FL 33462-1694

PHONE: 561-588-1170 FAX: 561-585-5252

CU-C043087

Subject: Labor Burden Certification

I, John P. Stanley, the Chief Financial Officer of Johnson-Davis, Inc., certify that the following statements are true and correct. The following information is submitted pursuant to Specification 4-3.2.1:

Burden Rate Breakdown									
Workers Compensation	State Unemployment & Federal	FICA	Vacation , Holiday, Personal Time, Bereavement Pay	Health / Dental Insurance	Life Insurance	401(K)	G/L Ins.	Disability Insurance	DFWP
0.065	0.062	0.0765	0.07	0.095	.0017	0.04	0.022	0	0.01

TOTAL BURDEN RATE = 44.2%

If you have any questions or require any additional information, feel free to contact me.

Thank you,

John Stanley
Chief Financial Officer



LARISA DITU PELKEY
Commission # HH 178111
Expires January 22, 2026
Bonded Thru Budget Notary Services

State of Florida, County of Palm Beach

Sworn and subscribed before me this 09 day of March, 2019

Notary Public

Personally known to me

My Commission Expires:

01-22-26



• *Heavy Construction* •

• *Underground Utilities* •

Main office: 604 Hillbrath Drive- Lantana, FL 33462 • Phone: 561-588-1170 • Fax: 561-585-5252
Ft. Pierce Office: 863 S. Kings Hwy- Ft. Pierce, FL 34945 • Phone: 772-468-9200 • Fax: 772-468-9202



CONTRACT PLANS COMPONENTS

ROADWAY PLANS
SIGNING AND PAVEMENT MARKING PLANS
UTILITY PLANS

STATE OF FLORIDA
DEPARTMENT OF TRANSPORTATION

CONTRACT

FINANCIAL PROJECT ID

PALM BEACH

BARFIELD HIGHWAY R

INDEX OF ROADWAY PLANS

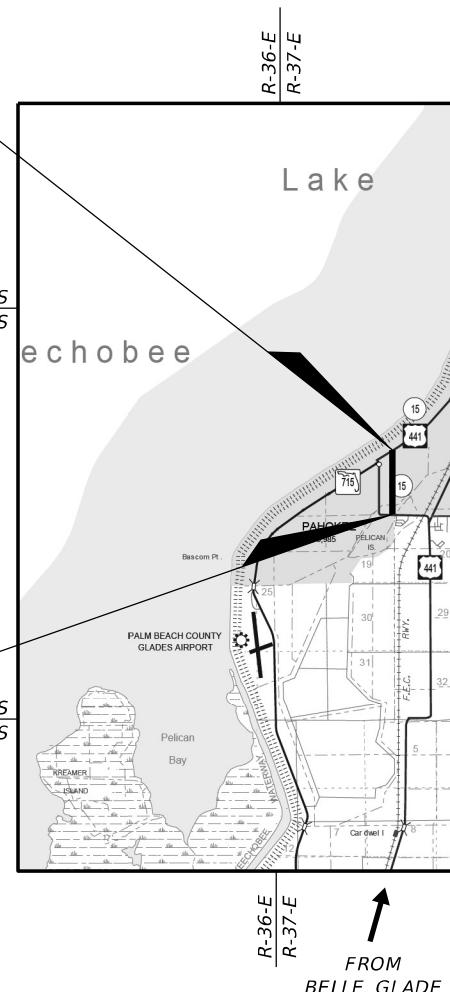
SHEET NO.	SHEET DESCRIPTION
1	KEY SHEET
2	SIGNATURE SHEET
3 - 3A	SUMMARY OF PAY ITEMS
4 - 5	DRAINAGE MAP
6 - 7	TYPICAL SECTION
8 - 10	SUMMARY OF DRAINAGE STRUCTURES
11	PROJECT LAYOUT
12	GENERAL NOTES
13 - 22	ROADWAY PLAN / PROFILE
23 - 24	CURB RAMP DETAILS
25 - 40	DRIVEWAY PROFILES
41 - 53	DRAINAGE STRUCTURES
54 - 56	ROADWAY SOIL SURVEY
57 - 87	CROSS SECTIONS
88 - 90	STORMWATER POLLUTION PREVENTION PLAN
91 - 95	EROSION CONTROL PLANS
96 - 98	TEMPORARY TRAFFIC CONTROL PLANS
99 - 103	UTILITY ADJUSTMENTS

END PROJECT
STA. 79+03.89
CL CONST.

BEGIN PROJECT
STA. 30+00.00
CL CONST.

T-41-S
T-42-S

T-42-S
T-43-S



GOVERNING STANDARD PLANS:

Florida Department of Transportation, FY2020-21 Standard Plans for Road and Bridge Construction and applicable Interim Revisions (IRs).

Standard Plans for Road Construction and associated IRs are available at the following website: <http://www.fdot.gov/design/standardplans>

APPLICABLE IRs: IR____-

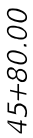
Standard Plans for Bridge Construction are included in the Structures Plans Component

GOVERNING STANDARD SPECIFICATIONS:

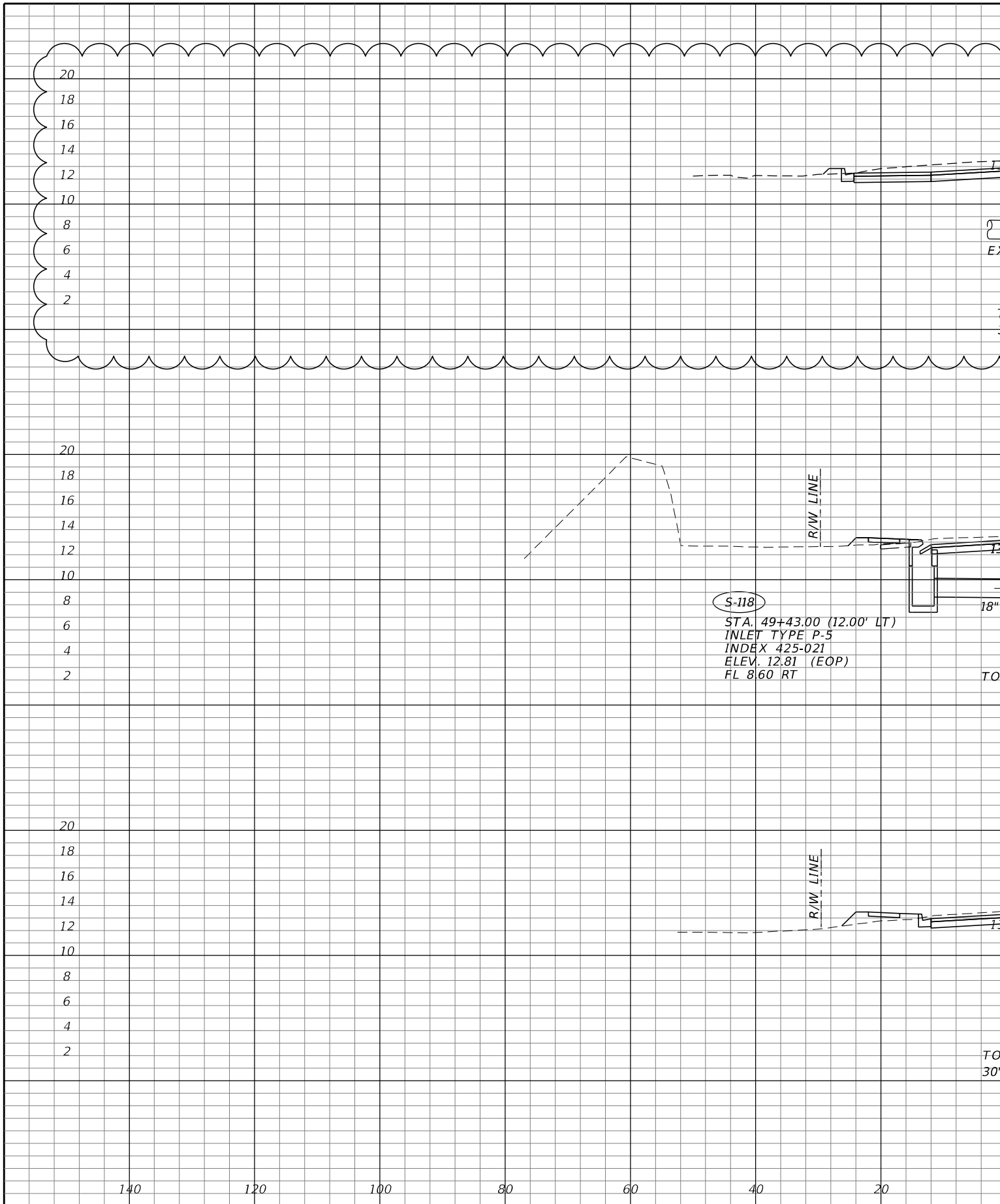
Florida Department of Transportation, JULY 2020 Standard Specifications for Road and Bridge Construction at the following website: <http://www.fdot.gov/programmanagement/Implemented/SpecBooks>

REVISIONS:

- 1 FINANCIAL PROJECT ID 442030-1
Roadway Sheet: 13, 14, 26, 57-61
(Revised 10-04-2021)
- 2 Roadway Sheet: 17, 45
(Revised 10-11-2021)



RODERICK MYRICK, P.E.
P.E. LICENSE NUMBER 56969
AE ENGINEERING, INC.
219 N. NEWMAN STREET, 4TH FLOOR
JACKSONVILLE, FL 32202
CERTIFICATE OF AUTHORIZATION: 27212



REVISIONS				RODERICK MYRICK, P.E. P.E. LICENSE NUMBER 56969 AE ENGINEERING, INC. 219 N. NEWNAN STREET, 4TH FLOOR JACKSONVILLE, FL 32202 CERTIFICATE OF AUTHORIZATION: 27212
DATE	DESCRIPTION	DATE	DESCRIPTION	
10-09-2021	△ ADDED S-123A.			

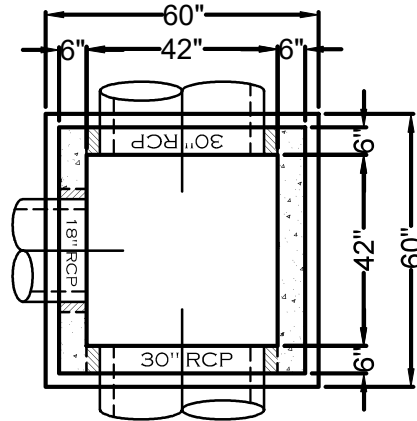
SPECIAL
ACCESSORY TO
ORDER BY
CPPB: NONE.

F.D.O.T. TESTING REQUIRED



CONCRETE PRODUCTS
OF THE PALM BEACHES, INC.
460 AVENUE "B"
RIVIERA BEACH, FL 33404
PHONE: 561-842-2743
FAX: 561-842-6387

42"Ø HOLE
HOLE UP: @ BASE
INVERT ELEV: 6.27



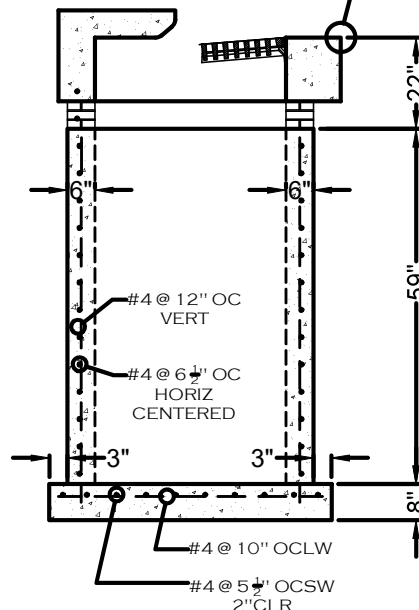
30"Ø HOLE
HOLE UP: 10' 1/2"
INVERT ELEV: 7.14

42"Ø HOLE
HOLE UP: @ BASE
INVERT ELEV: 6.27

PLAN VIEW

P5 (RIGHT) TOP
USF 5160-6310

EDGE OF PAVEMENT



FRONT ELEVATION

P-5 TOP TOTAL:

6,993#S
1.75 CYDS

WALL TOTAL:

4,038#S
1.01 CYDS

BASE TOTAL:

2,480 #S
0.62 CYDS

TOTAL WEIGHT:

13,511#S
3.38 CYDS

JOHNSON DAVIS,
INC.

BARFIELD HIGHWAY
RECONSTRUCTION
FIN# 442030-1-54-01

PROJECT NUMBER:

JD2021-059

STR NUMBER:

S-123A

STR TYPE:

P5 (RIGHT)
42"x42"
"CURB INLET"
(ALT. B) <10'-0"
F.D.O.T. INDEX:
425-021 & 010

CASTING:

USF 5160-6310 OR EQUAL

CONC. WEIGHT: 1,184 #V/FT

EOP ELEV:	12.54
INVERT ELEV:	6.27
CUT HEIGHT:	6.27
ADJUSTMENTS:	+0.50 -1.83
BOT. ELEV:	5.77
TOTAL HEIGHT:	4.94

GENERAL NOTES:

1. ALL CONCRETE TO BE 4000 PSI COMPRESSIVE STRENGTH @ 28 DAYS- TYPE II CONCRETE.
2. STRUCTURE DESIGN CONFORMS TO ASTM STANDARD C-478 SPECIFICATIONS.
3. STEEL REINFORCING PER F.D.O.T. INDEX #425-010 & #425-021.
4. ALL REINFORCING TO BE MINIMUM OF GRADE 60 STEEL WITH 2" CLR IN BASE & CENTERED IN THE WALLS.
5. ADDITIONAL REINFORCING @ ALL OPENINGS.
6. F.D.O.T. INSPECT & STAMP: YES

DATE: 10-20-21	REVISION:
DRAWN BY: AD	SCALE: N.T.S.
DWG NUM: S-123A	LOCATION: 17 & 45

REMARKS: ADD-ON

P5 (RIGHT) 42"x42" "CURB INLET" (ALT. B) <10'-0"

FIN# 442030-1-54-01

CONTRACT PLANS COMPONENTS

ROADWAY PLANS
SIGNING AND PAVEMENT MARKING PLANS
UTILITY PLANS

STATE OF FLORIDA
DEPARTMENT OF TRANSPORTATION

CONTRACT

FINANCIAL PROJECT

PALM BEACH

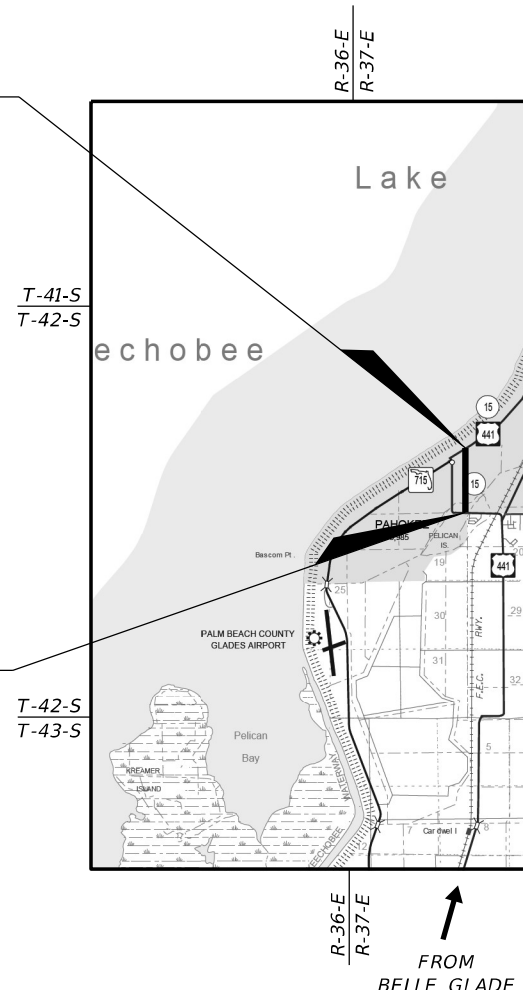
BARFIELD HIGHWAY R

INDEX OF ROADWAY PLANS

SHEET NO.	SHEET DESCRIPTION
1	KEY SHEET
2	SIGNATURE SHEET
3 - 3A	SUMMARY OF PAY ITEMS
4 - 5	DRAINAGE MAP
6 - 7	TYPICAL SECTION
8 - 10	SUMMARY OF DRAINAGE STRUCTURES
11	PROJECT LAYOUT
12	GENERAL NOTES
13 - 22	ROADWAY PLAN / PROFILE
23 - 24	CURB RAMP DETAILS
25 - 40	DRIVEWAY PROFILES
41 - 53	DRAINAGE STRUCTURES
54 - 56	ROADWAY SOIL SURVEY
57 - 87	CROSS SECTIONS
88 - 90	STORMWATER POLLUTION PREVENTION PLAN
91 - 95	EROSION CONTROL PLANS
96 - 98	TEMPORARY TRAFFIC CONTROL PLANS
99 - 103	UTILITY ADJUSTMENTS

END PROJECT
STA. 79+03.89
CL CONST.

BEGIN PROJECT
STA. 30+00.00
CL CONST.



GOVERNING STANDARD PLANS:

Florida Department of Transportation, FY2020-21 Standard Plans for Road and Bridge Construction and applicable Interim Revisions (IRs).

Standard Plans for Road Construction and associated IRs are available at the following website: <http://www.fdot.gov/design/standardplans>

APPLICABLE IRs: IR____-

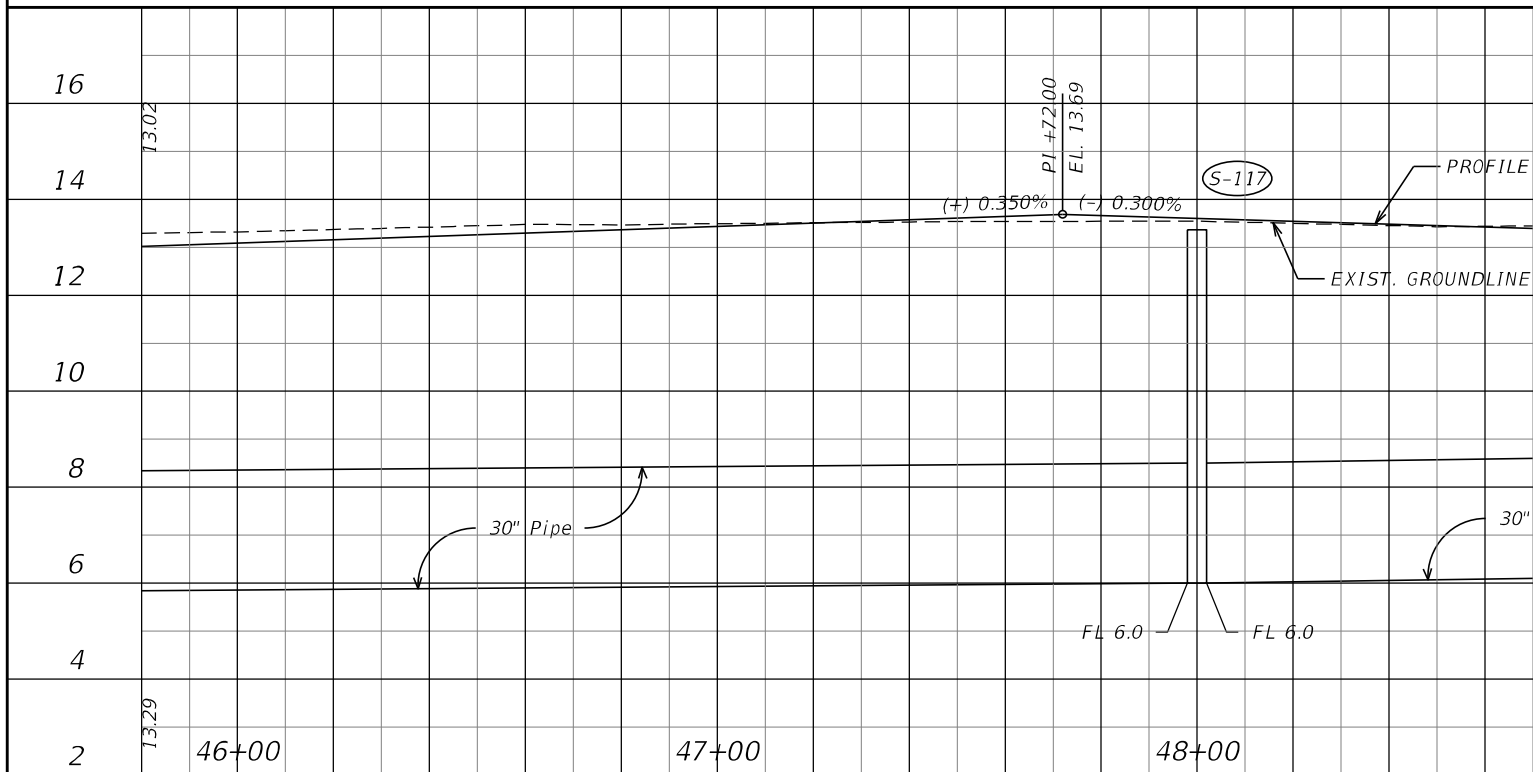
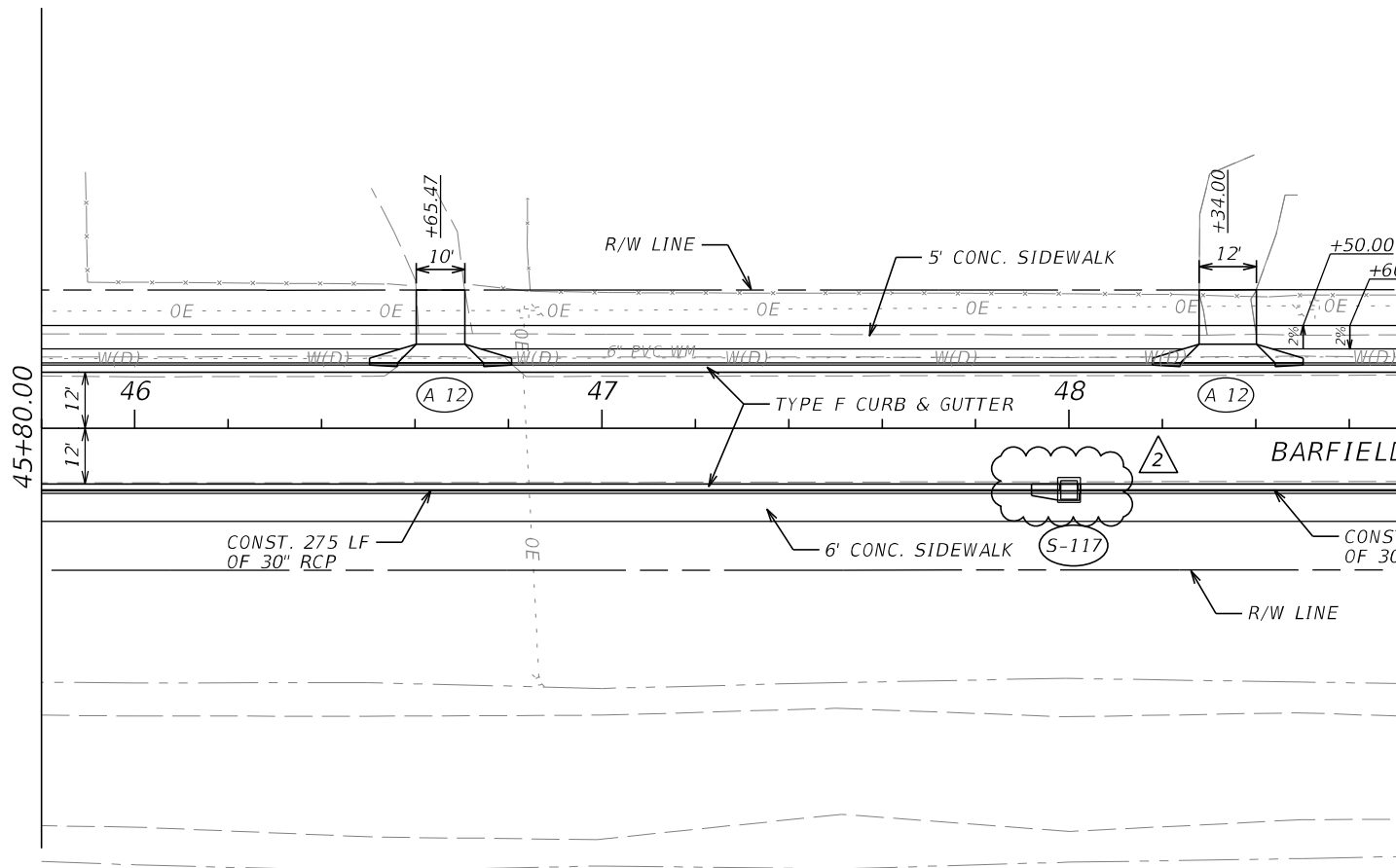
Standard Plans for Bridge Construction are included in the Structures Plans Component

GOVERNING STANDARD SPECIFICATIONS:

Florida Department of Transportation, JULY 2020 Standard Specifications for Road and Bridge Construction at the following website: <http://www.fdot.gov/programmanagement/Implemented/SpecBooks>

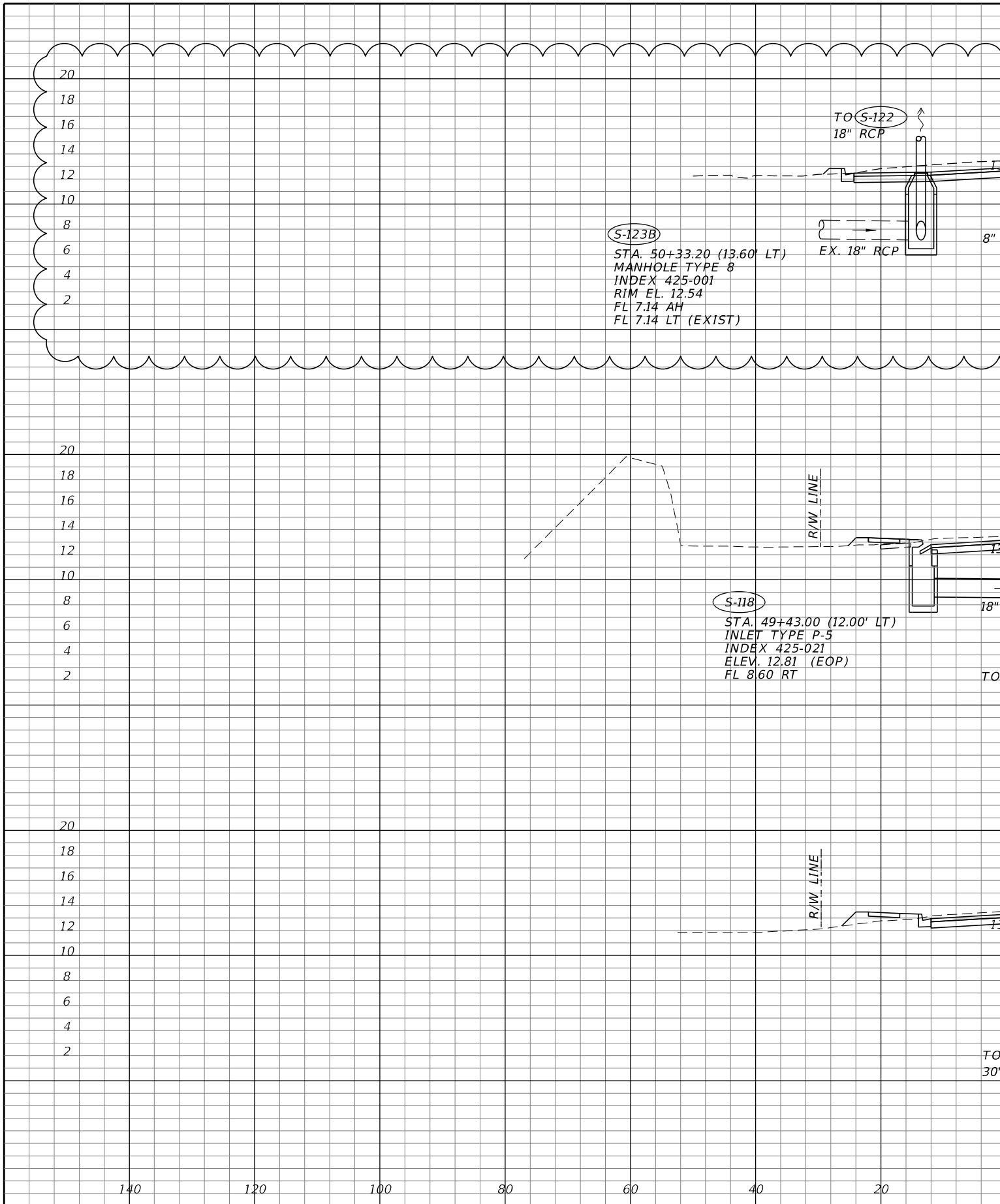
REVISIONS:

- 1 FINANCIAL PROJECT ID 442030-1
Roadway Sheet: 13, 14, 26, 57-61
(Revised 10-04-2021)
- 2 Roadway Sheet: 17, 45, 46
(Revised 12-20-2021)



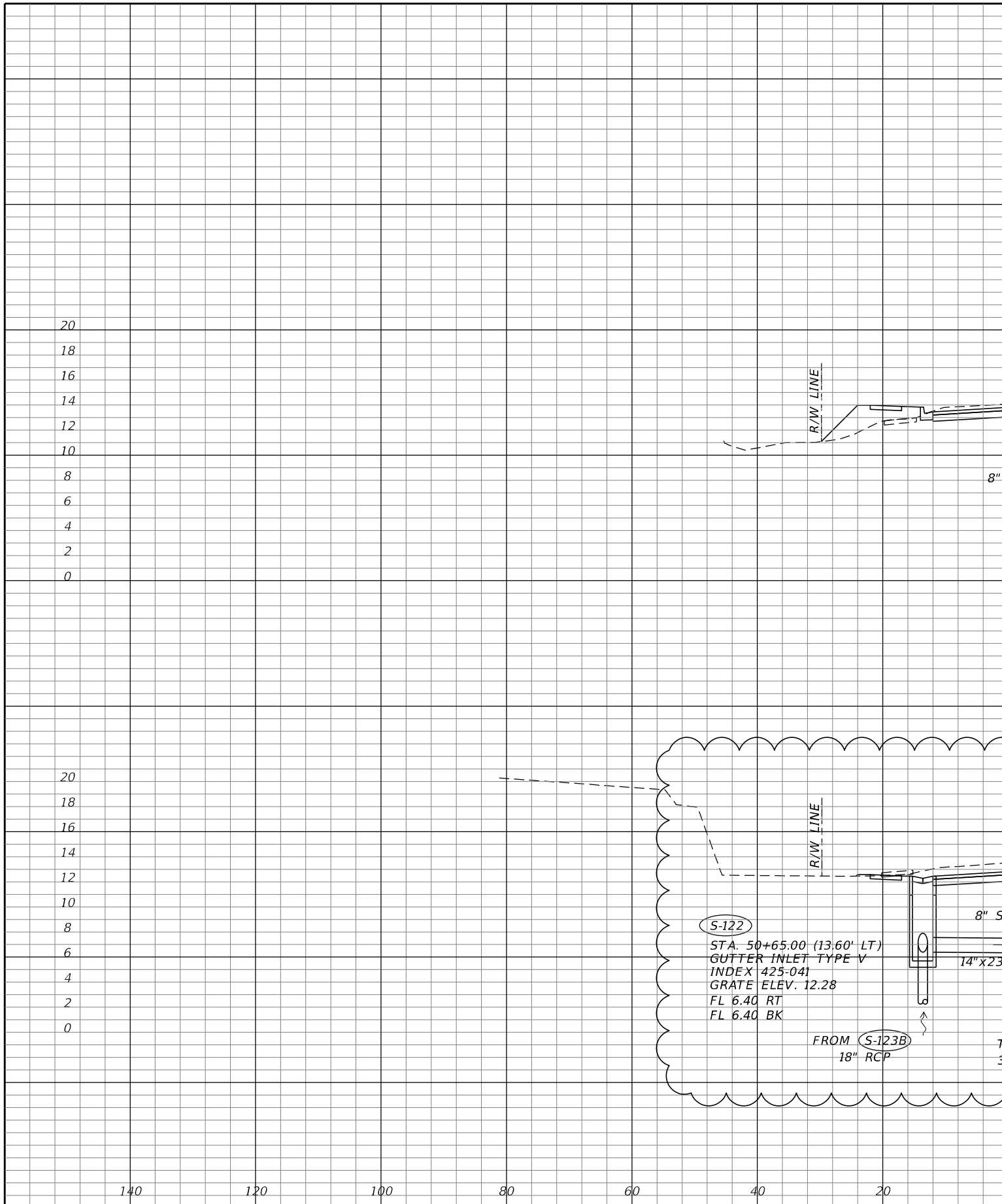
REVISIONS			
DATE	DESCRIPTION	DATE	DESCRIPTION
12-20-2021	△ ROTATED S-117 AND ADDED S-123B.		

RODERICK MYRICK, P.E.
 P.E. LICENSE NUMBER 56969
 AE ENGINEERING, INC.
 219 N. NEWNAN STREET, 4TH FLOOR
 JACKSONVILLE, FL 32202
 CERTIFICATE OF AUTHORIZATION: 27212



REVISIONS			
DATE	DESCRIPTION	DATE	DESCRIPTION
12-20-2021	△ ADDED S-123B.		

RODERICK MYRICK, P.E.
 P.E. LICENSE NUMBER 56969
 AE ENGINEERING, INC.
 219 N. NEWNAN STREET, 4TH FLOOR
 JACKSONVILLE, FL 32202
 CERTIFICATE OF AUTHORIZATION: 27212



REVISIONS			
DATE	DESCRIPTION	DATE	DESCRIPTION
12-20-2021	△ REVISED S-122 AND S-123.		

RODERICK MYRICK, P.E.
 P.E. LICENSE NUMBER 56969
 AE ENGINEERING, INC.
 219 N. NEWNAN STREET, 4TH FLOOR
 JACKSONVILLE, FL 32202
 CERTIFICATE OF AUTHORIZATION: 27212



CONCRETE PRODUCTS
OF THE PALM BEACHES, INC.

DATE: October 21, 2021

PRECAST CHANGE ORDER NO 2

CUSTOMER:	JOHNSON DAVIS	PO:	
JOB NAME:	BARIELD HIGHWAY		
PERSON CALLING:	CHAD	JOB NUMBER	JD2021-059

ADD QTY	STR#	ITEMS DESCRIPTION	CASTING REQ.		ITEM PRICE
1	S-123A	P-5 Right Curb Inlet w/ Throat	USF 5160-6310		\$ 1,550.00

SUBTOTAL: \$ 1,550.00

DELETE QTY	STR#	ITEMS DESCRIPTION	CASTING REQ.		ITEM PRICE

SUBTOTAL:

REMARKS/REASON FOR CHANGE(S)	ADDITIONAL COMMENTS/ NOTES	
1. WHY IS C/O NEEDED? ADDED TO PROJECT PER CUSTOMERS REQUEST		
2. IS IT IN THE ORIGINAL PLANS? NO	SUBTOTAL:	\$ 1,550.00
3. WAS IT PART OF THE ORIGINAL QUOTE? NO	CHANGE ORDER TOTAL:	\$ 1,550.00
4. CAN THE CUSTOMER PASS THE COST OF CHANGE(S) ON? YES	REQUESTED DELIVERY :	
5. WHO IS APPROVING IT? CHAD		
	COMPLETED BY:	Mike

CUSTOMER APPROVAL

SIGNED:

PRINTED NAME + DATE:



CONCRETE PRODUCTS
OF THE PALM BEACHES, INC.
460 Avenue S.
Riviera Beach, FL 33404
OFFICE FAX-561-842-6387
OFFICE NO.-561-842-2743

No. 11101

Page: 1 of 1

Date: 1/21/22

JOB NO.: _____

TO:

JOHNSON DAVIS

JOB NAME:

BARFIELD HIGHWAY SANITARY
MANHOLE REMAKES

ATTN: CHAD

Quantity	Item Description	Unit Price	Extended Total
2	Type 48" Dia. Sanitary Manhole w/ USF 420-KD w/ Boots & Agru-Liner 0'-6'	\$2,743.00	\$5,486.00
1	Type 48" Dia. P-8 Storm Manhole w/ USF 170-XB w/ NO Sump	\$1,383.00	\$1,383.00
	Any Type of Baffle, Skimmer or Weir BY OTHERS		
NOTES:		TOTAL	\$6,869.00
ADD TAX			

All Quotations/Proposals prices are good for 30 days. After 30 days, prices will be adjusted to reflect any increases in materials (Cement, Steel, Aggregates, castings, etc.)

ACCEPTANCE OF PROPOSAL: The above prices, specifications and conditions are satisfactory and are hereby accepted. You are authorized to do the work as specified.

DATE OF ACCEPTANCE _____

SIGNATURE _____

QUOTED BY MICHAEL P. LOWE

Quotation/Proposal

ID	Task Name	Duration	Start	Finish	Half 1, 2020 F M A M J J A S O N D	Half 2, 2020 J F M A M J J A S O N D	Half 1, 2021 J F M A M J J A S O N D	Half 2, 2021 J F M A M J J A S O N D
1	Preconstruction Meeting	1 day	Fri 4/30/21	Fri 4/30/21				
2	Shop Drawings Submitted, Reviewed and Returned	38 days	Mon 5/3/21	Wed 6/23/21				
3	Material Procurement	12 days	Thu 6/24/21	Fri 7/9/21				
4	Notice to Proceed	0 days	Wed 7/21/21	Wed 7/21/21				
5	Mobilization	0 days	Wed 7/21/21	Wed 7/21/21				
6	Sediment / Turbidity Barrier	8 days	Wed 7/21/21	Fri 7/30/21				
7	Phase I (East Side of Road)	141.25 days	Wed 7/21/21	Thu 3/30/23				
8	Clearing and Grubbing	1 day	Wed 7/21/21	Wed 7/21/21				
9	Mill Asphalt in Place (Sta. 30+00 to 63+40)	1 day	Wed 7/21/21	Wed 7/21/21				
10	Waterline	441.25 days	Wed 7/21/21	Thu 3/30/23				
11	Install New Waterline	349.25 days	Wed 7/21/21	Tue 11/22/22				
12	Section One Waterline Installation	59 days	Wed 7/21/21	Mon 10/11/21				
13	Sta. 30+60 to 30+60	1 day	Wed 7/21/21	Wed 7/21/21				
14	8" PVC	1 day	Wed 7/21/21	Wed 7/21/21				
15	Sta. 38+03 to 43+36	8 days	Thu 7/22/21	Mon 8/2/21				
16	12" PVC	5 days	Thu 7/22/21	Wed 7/28/21				
17	6" DIP	1 day	Thu 7/29/21	Thu 7/29/21				
18	FH #1 & #2	2 days	Fri 7/30/21	Mon 8/2/21				
19	Sta. 50+31 to 56+68	10 days	Tue 8/3/21	Mon 8/16/21				
20	12" PVC	7 days	Tue 8/3/21	Wed 8/11/21				
21	FH #5	1 day	Thu 8/12/21	Thu 8/12/21				
22	8" DIP	1 day	Fri 8/13/21	Fri 8/13/21				
23	FH #6	1 day	Mon 8/16/21	Mon 8/16/21				
24	Sta. 36+60 to 37+34	3 days	Tue 8/17/21	Thu 8/19/21				
25	6" DIP	2 days	Tue 8/17/21	Wed 8/18/21				
26	ARV	1 day	Thu 8/19/21	Thu 8/19/21				
27	Sta. 43+36 to 50+31	37 days	Fri 8/20/21	Mon 10/11/21				
28	12" PVC	7 days	Fri 8/20/21	Mon 8/30/21				
29	FH #3	1 day	Tue 8/31/21	Tue 8/31/21				
30	8" DIP	1 day	Wed 9/1/21	Wed 9/1/21				
31	FH#4	1 day	Thu 9/2/21	Thu 9/2/21				
32	Pressure Test and Bactees and asbuilts	15 days	Fri 9/3/21	Thu 9/23/21				
33	Health dept clearance	0 days	Thu 9/23/21	Thu 9/23/21				
34	Connect to Exist. Waterline	5 days	Tue 9/28/21	Mon 10/4/21				
35	Connect Services	5 days	Tue 10/5/21	Mon 10/11/21				
36	Section Two Waterline Installation	317.25 days	Fri 9/3/21	Tue 11/22/22				
37	Sta. 56+68 to 63+37	317.25 days	Fri 9/3/21	Tue 11/22/22				
38	12" PVC	7 days	Fri 9/3/21	Mon 9/13/21				
39	FH #7	1 day	Tue 9/14/21	Tue 9/14/21				
40	8" DIP	1 day	Wed 9/15/21	Wed 9/15/21				
41	FH #8	1 day	Thu 9/16/21	Thu 9/16/21				
42	Pressure Test and Bactees	15 days	Mon 1/3/22	Fri 11/18/22				
43	Connect to Exist. Waterline	1 day	Fri 11/18/22	Mon 11/21/22				
44	Connect Services	1 day	Mon 11/21/22	Tue 11/22/22				
45	Mill Asphalt in Place (Sta. 63+40 to 79+00)	1 day	Thu 9/16/21	Fri 9/17/21				
46	Sta. 63+37 to 70+34	20 days	Fri 9/17/21	Thu 10/14/21				
47	12" PVC (Main)	7 days	Fri 9/17/21	Mon 9/27/21				
48	6" DIP	1 day	Tue 10/12/21	Tue 10/12/21				
49	FH #9	1 day	Wed 10/13/21	Wed 10/13/21				
50	FH #10	1 day	Thu 10/14/21	Thu 10/14/21				
51	Sta. 70+34 to 76+08	8 days	Fri 10/15/21	Tue 10/26/21				
52	12" PVC	6 days	Fri 10/15/21	Fri 10/22/21				
53	FH #11	1 day	Mon 10/25/21	Mon 10/25/21				
54	FH #12	1 day	Tue 10/26/21	Tue 10/26/21				
55	Sta. 76+08 to 78+45	29 days	Wed 10/27/21	Mon 12/6/21				
56	8" PVC	3 days	Wed 10/27/21	Fri 10/29/21				
57	FH #13	1 day	Mon 11/1/21	Mon 11/1/21				
58	Pressure Test and Bactees	15 days	Tue 11/2/21	Mon 11/22/21				
59	Connect to Exist. Waterline	5 days	Tue 11/23/21	Mon 11/29/21				
60	Connect Services	5 days	Tue 11/30/21	Mon 12/6/21				
61	Demo Existing Waterline	48 days	Mon 1/23/23	Thu 3/30/23				
62	Sta. 35+00 to East 5th Street	4 days	Mon 1/23/23	Fri 1/27/23				
63	East 5th Street to East 2nd Street	5 days	Fri 1/27/23	Fri 2/3/23				
64	East 2nd Street to Main Street	4 days	Fri 3/24/23	Thu 3/30/23				
65	Sanitary Sewer	219 days	Wed 7/21/21	Mon 5/23/22				
66	Phase I (East Side of Road)	5 days	Wed 7/21/21	Tue 7/27/21				
67	Existing to SS-3	1 day	Wed 7/21/21	Wed 7/21/21				
68	SS-3 to SS-4	5 days	Wed 7/21/21	Tue 7/27/21				
69	Phase II (West Side of Road)	3 days	Thu 5/19/22	Mon 5/23/22				

Project: 20037 Barfield Hwy
Date: Tue 6/7/22

Task Milestone Summary Critical

ID	Task Name	Duration	Start	Finish	Half 1, 2020				Half 2, 2020				Half 1, 2021				Half 2, 2021					
					F	M	A	M	J	J	A	S	O	N	D	J	F	M	A	M	J	J
137	Temp Striping (East 7th to East 5th) (One Way Traffic)	2 days	Thu 1/19/23	Mon 1/23/23																		
138	Roadway (East 5th Street to East 2nd Street)	225.25 days	Thu 3/10/22	Thu 1/19/23																		
139	Dig out and Rock	15 days	Thu 3/10/22	Thu 12/8/22																		
140	Finish Grade Curb Pad	5 days	Thu 12/8/22	Thu 12/15/22																		
141	Pour Curb	5 days	Fri 12/9/22	Fri 12/16/22																		
142	Install 2nd Lift of Rock	2 days	Fri 12/16/22	Tue 12/20/22																		
143	Prep 6" Concrete Drives	2 days	Wed 12/14/22	Fri 12/16/22																		
144	Pour 6" Concrete Drives	2 days	Fri 12/16/22	Tue 12/20/22																		
145	Prep 4" Concrete Sidewalk	10 days	Fri 12/16/22	Fri 12/30/22																		
146	Pour 4" Concrete Sidewalk	12 days	Tue 12/20/22	Thu 1/5/23																		
147	Finish Grade Rock	4 days	Fri 12/30/22	Thu 1/5/23																		
148	Install 1st Lift Asphalt	1 day	Thu 1/5/23	Fri 1/6/23																		
149	Prep for Sod	6 days	Fri 1/6/23	Mon 1/16/23																		
150	Install Sod	3 days	Mon 1/16/23	Thu 1/19/23																		
151	Temp Striping (East 5th to East 2nd) (One Way Traffic)	2 days	Mon 1/23/23	Wed 1/25/23																		
152	Roadway (East 2nd Street to Main Street)	49 days	Mon 1/16/23	Fri 3/24/23																		
153	Dig out and Rock	11 days	Mon 1/16/23	Tue 1/31/23																		
154	Finish Grade Curb Pad	4 days	Tue 1/31/23	Mon 2/6/23																		
155	Pour Curb	5 days	Mon 2/6/23	Mon 2/13/23																		
156	Install 2nd Lift of Rock	2 days	Mon 2/13/23	Wed 2/15/23																		
157	Prep 6" Concrete Drives	2 days	Wed 2/15/23	Fri 2/17/23																		
158	Pour 6" Concrete Drives	2 days	Fri 2/17/23	Tue 2/21/23																		
159	Prep 4" Concrete Sidewalk	5 days	Tue 2/21/23	Tue 2/28/23																		
160	Pour 4" Concrete Sidewalk	8 days	Tue 2/28/23	Fri 3/10/23																		
161	Finish Grade Rock	3 days	Fri 3/10/23	Wed 3/15/23																		
162	Install 1st Lift Asphalt	1 day	Wed 3/15/23	Thu 3/16/23																		
163	Prep for Sod	4 days	Thu 3/16/23	Wed 3/22/23																		
164	Install Sod	2 days	Wed 3/22/23	Fri 3/24/23																		
165	Phase 2 (North side of Road)	235.9 days	Thu 5/19/22	Thu 4/13/23																		
166	Mill Existing Asphalt in Place (Sta. 30+00 to 2nd Street)	1 day	Thu 5/19/22	Fri 5/20/22																		
167	Stormwater Conveyance System	231.25 days	Fri 5/20/22	Mon 4/10/23																		
168	East 7th Street to East 5th Street	180.75 days	Fri 5/20/22	Fri 1/27/23																		
169	18" Plug to S-100	1 day	Fri 5/20/22	Fri 1/27/23																		
170	18" Plug to S-102	1 day	Mon 5/23/22	Fri 1/27/23																		
171	18" Plug to S-106	1 day	Tue 5/24/22	Fri 1/27/23																		
172	S-106 to S-107	1 day	Wed 5/25/22	Fri 1/27/23																		
173	18" Plug to S-109	1 day	Thu 5/26/22	Fri 1/27/23																		
174	18" Plug to S-112	1 day	Fri 5/27/22	Fri 1/27/23																		
175	East 5th Street to East 2nd Street	6 days	Fri 2/3/23	Mon 2/13/23																		
176	18" Plug to S-115	1 day	Fri 2/3/23	Mon 2/6/23																		
177	18" Plug to S-118	1 day	Mon 2/6/23	Tue 2/7/23																		
178	18" Plug to S-122	1 day	Tue 2/7/23	Wed 2/8/23																		
179	18" Plug to S-125	1 day	Wed 2/8/23	Thu 2/9/23																		
180	18" Plug to S-128	1 day	Thu 2/9/23	Fri 2/10/23																		
181	18" Plug to S-130	1 day	Fri 2/10/23	Mon 2/13/23																		
182	Mill Existing Asphalt in Place (Sta. 2nd to Main)	1 day	Wed 7/27/22	Thu 3/30/23																		
183	East 2nd Street to Main Street	7 days	Thu 3/30/23	Mon 4/10/23																		
184	18" Plug to S-133	1 day	Thu 3/30/23	Fri 3/31/23																		
185	18" Plug to S-135	1 day	Fri 3/31/23	Mon 4/3/23																		
186	18" Plug to S-140	1 day	Mon 4/3/23	Tue 4/4/23																		
187	18" Plug to S-144	1 day	Tue 4/4/23	Wed 4/5/23																		
188	18" Plug to S-145	1 day	Wed 4/5/23	Thu 4/6/23																		
189	18" Plug to S-147	1 day	Thu 4/6/23	Fri 4/7/23																		
190	18" Plug to S-149	1 day	Fri 4/7/23	Mon 4/10/23																		
191	Roadway (East 7th Street to East 5th Street)	180.25 days	Wed 8/3/22	Wed 4/12/23																		
192	Gravity Wall	15 days	Wed 3/22/23	Wed 4/12/23																		
193	Dig out and Rock	9 days	Wed 8/3/22	Fri 2/17/23																		
194	Finish Grade Curb Pad	3 days	Tue 8/16/22	Thu 8/18/22																		
195	Pour Curb	3 days	Wed 8/17/22	Thu 11/17/22																		
196	Install 2nd Lift of Rock	1 day	Mon 8/22/22	Mon 8/22/22																		
197	Prep 6" Concrete Drives	1 day	Mon 8/22/22	Thu 11/17/22																		
198	Pour 6" Concrete Drives	1 day	Tue 8/23/22	Thu 11/17/22																		
199	Prep 4" Concrete Sidewalk	6 days	Tue 8/23/22	Fri 11/18/22																		
200	Pour 4" Concrete Sidewalk	8 days	Wed 8/24/22	Fri 11/18/22																		
201	Finish Grade Rock	2 days	Mon 9/5/22	Tue 9/6/22																		
202	Install 1st Lift Asphalt	1 day	Wed 9/7/22	Wed 9/7/22																		
203	Prep for Sod	4 days	Thu 9/8/22	Thu 11/17/22																		
204	Install Sod	2 days	Thu 11/17/22	Mon 11/21/22																		

