

1

Introductions

- **Gina Stassi-Vanacore:** Director of Communications, Pioneer Community Energy
- **Lisa DeLaby:** Community Outreach Manager, Pioneer Community Energy

2

What is a CCA?

- Community Choice Aggregators (CCA) allow local governments to purchase electricity on behalf of customers in place of investor-owned utilities (i.e., PG&E for Pioneer Community Energy's territory)
- Energy crisis in the early 2000s prompted the California Legislature to pass Assembly Bill 117 in 2002, enabling community choice in its electricity provider
- The first CCA launched in 2010. Today:
 - More than 25 CCAs throughout California
 - Serving more than 200 communities
 - Providing generation for approximately 14 million customers



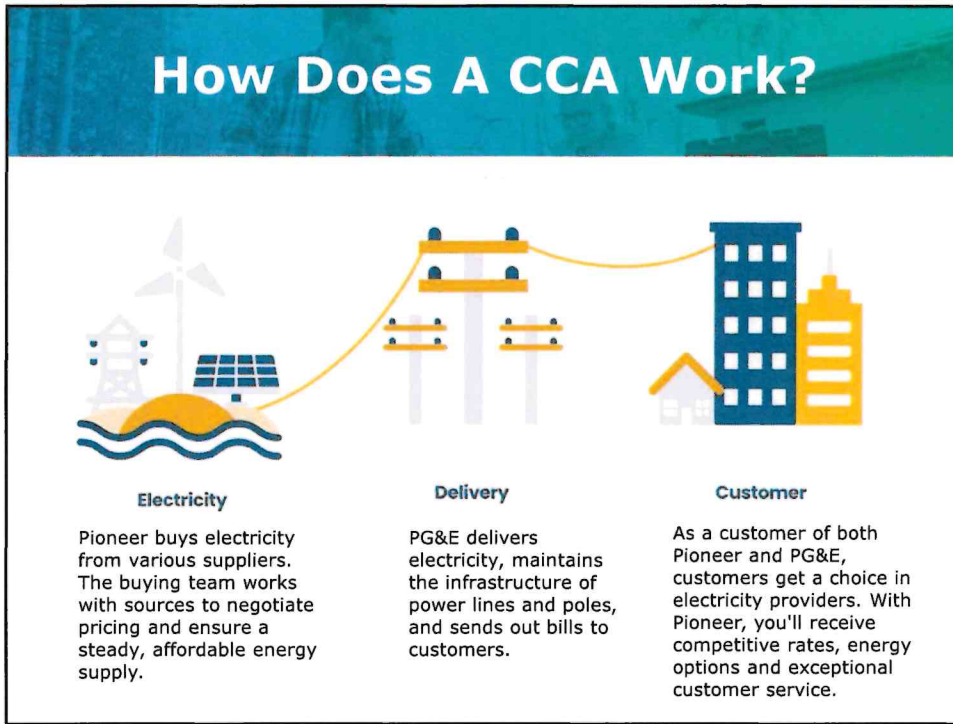
3

Why Choose Pioneer?

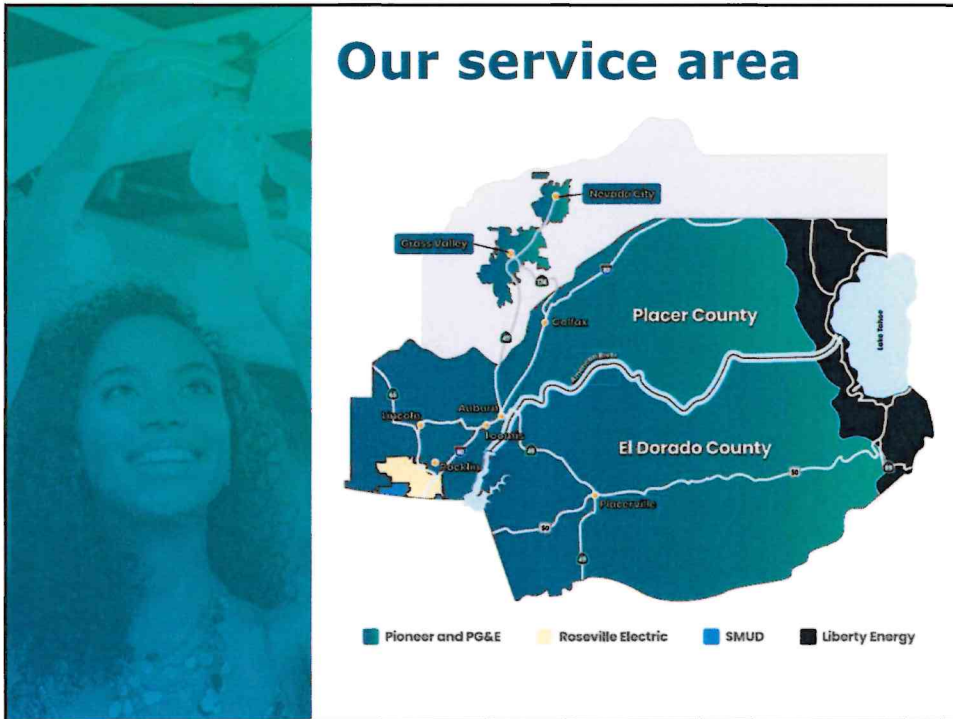
Pioneer serves inland communities with similar priorities like customer savings, community reinvestment, exceptional customer service, and economic development

- **Local Control** - Pioneer is a Joint Powers Authority, a not-for-profit public agency, with a board of directors comprised of only elected officials from the jurisdictions we serve.
- **Ratepayer Savings** - We are committed to providing competitive electricity rates and have saved customers \$85 million since launching in 2018, with an additional \$21 million in savings anticipated in 2024.
- **Community Reinvestment** - Creating opportunities to support biomass, and local power purchase agreements
 - El Dorado Irrigation District (\$37 million)
 - PCWA (Over \$10 million)
 - Sierra Pacific Industries (\$1.2 million)
 - Grass Valley - Biomass RFP
 - Western Placer Waste Management - biomass plant

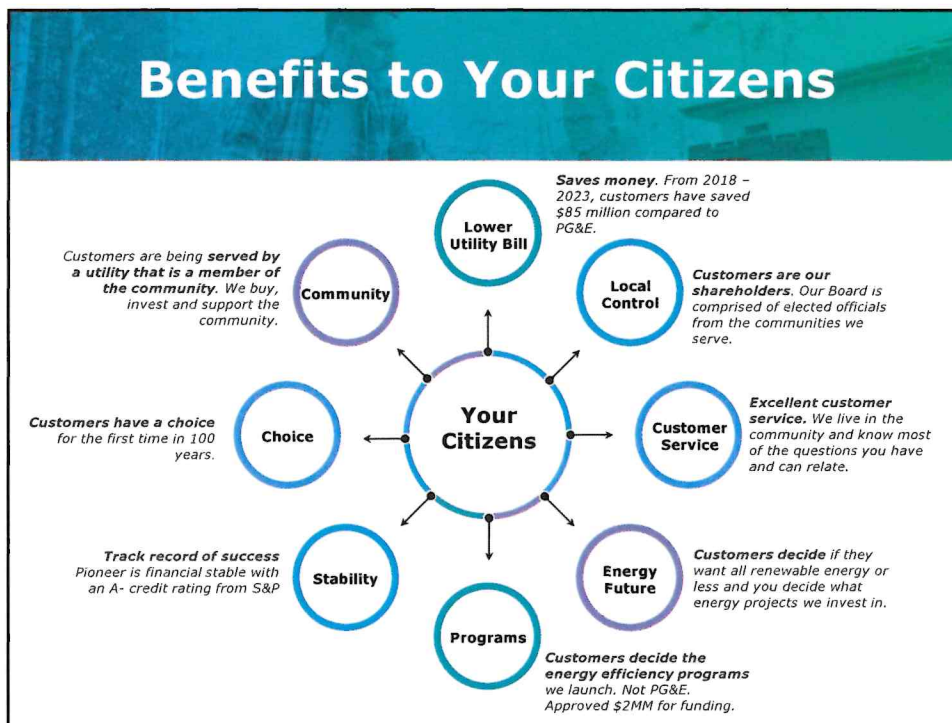
4



5



6



7

Governance

One Member – One Vote
No weighted voting based on electrical load usage. Each Member gets equal say.

Board Members are Elected Officials
Each Member Agency is represented by an elected official from the City/Town Council or County Board of Supervisors

You Decide
The Member Agency decides who sits on the Board. Pioneer imposes no term limits but encourages consistency when considering the complexities of the business

8



9

- ## Biomass & Advocacy
- **Legislation:** Pioneer sponsored and led AB 843 which passed on a unanimous bipartisan basis – this bill enabled CCAs to participate in the BioMAT program and launched in Spring 2024
 - **Feed-In Tariff:** Pioneer-unique program that incentivizes investment in biomass and small-hydro projects in our service territory to benefit the community and create local jobs
 - **Education:** Recently hosted an event together with SPI, CalFire, and Placer APCD for legislators about the benefits of biomass to support future legislation for biomass
 - **Advocacy Generally:** Ongoing advocacy with legislators and regulatory agencies to keep electricity costs low, promote biomass energy, and grid stability, among other things

10

Programs

Any program a customer is has with PG&E (e.g. CARE/FERA) carries over to Pioneer

- Additional Pioneer-specific programs include :
 - **Online Marketplace** -guides customers through the maze of complex information when deciding to energize their home, and protects them from bad players
 - **Participate.Energy** - \$0 lease program for residents to pair solar+battery storage that provides stability to rates and resiliency to grid outages
 - **GreenLite** – subsidized LED lighting through local retailers in Pioneer’s service area
 - **HVAC Tune-Up Rebate** – provide rebates to incentivize tune-ups on home systems to improve efficiency and lower utility bills
 - **Demand Side Management** programs coming soon that reward customers/businesses to lower energy usage when the grid is stressed
 - **Bi-monthly Customer Advisory Committee**

11

Community/Regional Partner

- Active involvement with Rural County Representatives of California (RCRC) to identify potential biomass projects that leads to economic development
- Participate in member agencies’ Chamber of Commerce committees and events
- Recently co-sponsored League of Cities divisional event
- Sponsor of marquee events like Lincoln Potters Baseball Club and Sierra Nevada Memorial Hospital gala as examples of engagement
- Partner with California Biomass Energy Alliance and Bioenergy Association of California
- Work with Economic Development groups to entice business location with Green100 product and competitive rates

12

Growing Interest in Joining Pioneer

PIONEER
COMMUNITY ENERGY

13

Next Steps

November 2024

- Pioneer conducts background meetings to gauge interest in joining working with city/county staff.
- Public meeting presentation from Pioneer.
- Orland, Willows, Glenn County move forward with Impact Assessment Study.
- Pioneer secures required data from PG&E.

January 2025

- Study findings shared with staff.
- 1st and 2nd readings of ordinance conducted by prospective members.

December 2024

- Orland, Willows, and Glenn County Impact Assessment Study begins.

March 2025

- Implementation Plan Amendment submitted to CPUC.

14



15



16

Mission & Vision

Mission Statement (What we do) – Pioneer Community Energy is a locally owned provider of electricity – powering the communities we serve with competitive rates, reliable service, and a choice in energy options

Vision Statement (Where we want to be) – A community partner in reliable energy solutions, and positive local impact, powering today and empowering tomorrow

17


Guiding Principles

- **Mission Statement:** Pioneer Energy is a locally owned provider of electricity – powering the communities we serve with competitive rates, reliable service, and a choice in energy options
- **Vision Statement:** A community partner in reliable energy solutions and positive local impact, powering today and empowering tomorrow

18

Rate Products

Residential Electricity Rates*



44.1% Renewable*


\$265.36**
average total

\$90.82
Electricity

N/A
Green100 Charges

\$177.13
PG&E Shipping Charges

\$(2.59)***
PCIA + FFS



100% Renewable


\$272.43**
average total

\$90.82
Electricity

\$7.07
Green100 Charges

\$177.13
PG&E Shipping Charges

\$(2.59)***
PCIA + FFS



38.3% Renewable

\$278.85**
average total

\$96.54
Electricity

N/A
Green100 Charges

\$177.13
PG&E Shipping Charges

\$5.19***
PCIA

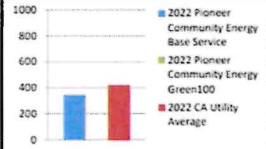
*As reported to the California Public Utilities Commission and Pioneer's Board of Directors.

19

Power Mix

2022 POWER CONTENT LABEL

Pioneer Community Energy
<https://pioneercommunityenergy.org/about-us/key-documents/>

Greenhouse Gas Emissions Intensity (lbs CO ₂ e/MWh)			Energy Resources					
2022 Pioneer Community Energy Base Service	2022 Pioneer Community Energy Green100	2022 CA Utility Average	2022 Pioneer Community Energy Base Service Power Mix	2022 Pioneer Community Energy Green100 Power Mix	2022 CA Power Mix			
343	0	422	Eligible Renewable¹	44.1%	100.0%	35.8%		
			Biomass & Biowaste	0.6%	0.0%	2.3%		
			Geothermal	6.3%	0.0%	4.7%		
			Eligible Hydroelectric	2.7%	21.6%	1.1%		
			Solar	11.5%	28.4%	17.0%		
			Wind	23.3%	30.0%	30.8%		
			Coal	0.0%	0.0%	2.1%		
			Large Hydroelectric	1.3%	0.0%	9.2%		
			Natural Gas	0.0%	0.0%	36.4%		
			Nuclear	27.6%	0.0%	9.2%		
			Other	0.0%	0.0%	0.1%		
			Unspecified Power²	27.0%	0.0%	7.1%		
			TOTAL	100.0%	100.0%	100.0%		
			Percentage of Retail Sales Covered by Retired Unbundled RECs³:			4%	0%	

¹The eligible renewable percentage above does not reflect RPS compliance, which is determined using a different methodology.
²Unspecified power is electricity that has been purchased through open market transactions and is not traceable to a specific generation source.
³Renewable energy credits (RECs) are tracking instruments issued for renewable generation. Unbundled renewable energy credits (RECs) represent renewable generation that was not delivered to serve retail sales. Unbundled RECs are not reflected in the power mix or GHG emissions intensities above.

For specific information about this electricity portfolio, contact: **Pioneer Community Energy**
1 (844) 937-7466

For general information about the Power Content Label, visit: <https://www.energy.ca.gov/programs-and-topics/programs/power-source-disclosure-program>

20

PG&E Programs Carry Over

- Enrollment in any program with PG&E, carries over to Pioneer. Examples include but not limited to:
 - CARE
 - FERA
 - Medical Baseline
- PG&E service will not be impacted by joining Pioneer (e.g., service request placed last in que with PG&E because you're with Pioneer)
- In addition, customers have access to Pioneer programs that are created to meet the unique needs of the communities we serve.

21

Benefits for Solar Customers

- Pioneer has 42,000+ solar accounts
- If you are a net generator, we pay a 1/2 cent premium over PG&E for your power
- If you are a net consumer, you enjoy the same discount as non-solar customer
- No contract or PPA required
- Reconcile monthly
- Annual pay-outs
- Indifferent on NEM 1,2 or SBP



22

How are customers billed?



ENERGY STATEMENT

www.pge.com/MyEnergy

Account No:

Statement Date: 05/03/2023

Due Date: 05/24/2023

Service For:

Your Account Summary

Amount Due on Previous Statement	\$310.25
Payment(s) Received Since Last Statement	-311.00
Outstanding Credit Balance	-\$0.75
Current PG&E Electric Delivery Charges	\$80.73
Pioneer Community Energy Electric Generation Charges	51.35
Current Gas Charges	110.27

Questions about your bill?

Mon-Fri 7 a.m.-7 p.m.
 Saturday 8 a.m.-5 p.m.
 Phone: 1-800-743-5000
www.pge.com/MyEnergy

Total Amount Due by 05/24/2023	\$241.60
---------------------------------------	-----------------

PG&E Bill – Page #1

- Pioneer listed on the front page
- Customer pays total energy bill to PG&E – one payment
- PG&E remits \$ to Pioneer