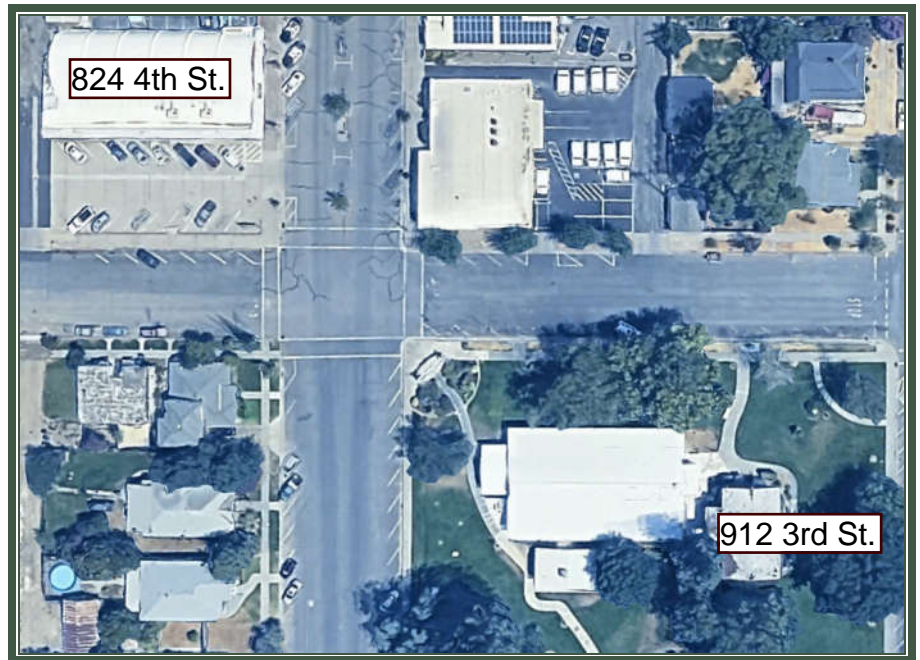




**Hazardous Material Survey Report**  
**824 4<sup>th</sup> Street, Orland, CA 95963**  
**912 3<sup>rd</sup> Street, Orland, CA 95963**



Prepared for:  
RG1 Construction Inc.  
3525 Old Conejo Rd #119  
Newbury Park, CA 91320

Prepared By:  
Vista Environmental Consulting  
2984 Teagarden Street  
San Leandro, CA 94577

February 20, 2026

Project No. 260036001

## TABLE OF CONTENTS

### EXECUTIVE SUMMARY

	<u>PAGE</u>
1. INTRODUCTION	1
2. METHODOLOGY	1
3. RESULTS	4
4. RECOMMENDATIONS	4
5. LIMITATIONS & EXCLUSIONS	8

### FIGURES

1. SITE PLAN

### APPENDICES

#### A. BUILDING DATA

- Hazardous Materials Summary
- Asbestos Sampling Inventory
- Sample Location Drawings
- Photo Documentation
- Asbestos Analytical Reports
- Lead Analytical Reports

## **EXECUTIVE SUMMARY**

Vista Environmental Consulting (Vista) performed pre-renovation hazardous materials surveys for the two (2) buildings located at 824 4<sup>th</sup> Street and 912 3<sup>rd</sup> Street, Orland, CA 95963 (Project Site). The surveys were performed to identify and sample accessible, suspect asbestos-containing materials, representative building components for the presence of lead-containing surface coatings/lead-based paints (LCSC/LBP), Polychlorinated Biphenyls (PCBs) in light fixture ballasts, and other hazardous materials that may be in the path of the renovation project. Vista performed the survey on January 26-27, 2026.

The following buildings were surveyed and contain the following hazardous materials:

- 824 4<sup>th</sup> Street, Orland, CA
- 912 3<sup>rd</sup> Street, Orland, CA

The Hazardous Materials Summaries, Asbestos Sampling Inventories, Sample Location Drawings, Photo Documentation Asbestos Analytical Reports, and Lead Analytical Reports can be found in *Appendix A – Building Data*.

The documents found in the appendices are not stand-alone documents and should not be separated from this report. Quantities and locations listed in the tables are order of magnitude estimates and are not to be used for bidding purposes. It is the sole responsibility of the contractor to verify quantities and locations of hazardous materials in the path of construction through site visits and contractual bid set documents, including, but not limited to all specifications, drawings, and addenda. Any discrepancies between the contractual bid set documentation and site visits must be submitted in writing to the Owner or Owner's representative, prior to bidding.

Glenn County Air Pollution Control; District (NESHAPS Non-Delegated) classifications are based upon the material's condition at the time of the survey or as rendered as a result of standard manual removal/demolition techniques. The use of "mechanical means", non-standard or other aggressive removal/demolition techniques may result in a different classification. Severely damaged non-friable asbestos containing materials, such as floor tiles and cement panels, are considered a regulated asbestos-containing material (RACM).

All Class I and II asbestos (>0.1%) disturbance and/or removal operations must be conducted by a Cal/OSHA registered and State licensed asbestos removal contractor. All disturbance and/or abatement operations should be under the direction of a California Certified Asbestos Consultant.

Should the removal of identified RACM involve at least 160 square feet or 260 linear feet per project site, per year, then notification to the NESHAPS (Local EPA) must be accomplished prior to the initiation of such activities. Cal/OSHA notification is needed for asbestos containing materials (ACM) over 100 square or linear feet.

All activities involving potential and identified lead-containing surfaces should be conducted in accordance with California Health & Safety Code sections 17920.10 and 10525, 10525.7, Title 8, California Code of Regulations (CCR), Section 1532.1.

In addition, all removal activities involving identified lead-based paints (LBP) must be conducted in accordance with Title 17, CCR, Division 1, Chapter 8, Sections 35001 through 36100, which proscribes the use of California Department of Public Health (CDPH) certified workers, work practices, and other requirements.

Written notification to Cal/OSHA must be accomplished should LBP activities involve equal to or more than 100 square feet or 100 linear feet of removal in accordance with the requirements of 8 CCR 1532.1.

Any welding, cutting or heating of metal surfaces containing surface coatings should be conducted in accordance with 8 CCR 1537 Welding, Cutting, and Heating of Coated Metals, which require surfaces covered with toxic preservatives, and in enclosed areas, be stripped of all toxic coatings for a distance of at least 4 inches, in all directions, from the area of heat application prior to the initiation of such heat application, or 8 CCR 1536 Ventilation Requirements for Welding, Brazing, and Cutting.

All potential and identified Universal Waste materials (UW) and Electronic Waste (E-Waste) impacted by the work should be removed and recycled or disposed of in accordance with the UW guidelines established by the DTSC, as stated in 22 CCR Sections 66261.9 and 66273.1 thru 66273.90.

All ballasts must be visually inspected prior to disposal to determine if they contain PCBs. Those ballasts marked No PCB's or PCB Free can be considered as such as should be treated as UW - electronic waste. All PCB-containing devices, including, but not limited to ballasts should be removed or have the oils removed and properly handled, collected, stored, transported and recycled or disposed of by an approved recycling or disposal facility in accordance with the requirements of Title 22 CCR 67426.1.

Devices containing ozone depleting chemicals and low-level radioactive sources, should be collected, waste characterized, disposed or recycled according to California rules and regulations.

Should materials similar to those identified in this report, or if other forms of suspect hazardous materials are encountered, contractors should be instructed to immediately cease work activities which may initiate an exposure episode, and notify the appropriate management personnel.

**Report prepared for the Company by:**

A handwritten signature in black ink, appearing to read 'C. Burns', written in a cursive style.

Christopher R. Burns  
Senior Project Manager  
CAC #92-0224  
LRCIA #LRC-00006938

## 1.0 INTRODUCTION

Vista Environmental Consulting, Inc. (Vista) has prepared this pre-renovation hazardous materials survey report for the two (2) buildings located at 824 4th Street and 912 3rd Street, Orland, CA 95963 (Project Site) for RG1 Construction Inc.

The purpose of this survey was to identify hazardous building materials so they can be removed; waste characterized, and properly disposed of prior to being impacted by renovation activities. The data provided in this report can assist all parties involved in this project make informed decisions with regards to regulatory compliance and the health and safety of their employees. This survey included the following:

- Visible and accessible suspect asbestos-containing materials (ACM) were assessed and sampled to determine asbestos content.
- Representative painted and coated building components were assessed and categorized based upon standard selective demolition practices and sampled for lead content which can be used in preliminary waste stream characterization estimates.
- Visible and accessible materials with the potential to have hazardous properties that are regulated and are commonly found in buildings were assessed, but not sampled. These materials include, but are not limited to:
  - Universal Waste (UW) materials, such as non-incandescent lamps, batteries, mercury-containing devices, and electronic waste; Batteries include, but are not limited to those found in exit signs, emergency lights, fire alarm systems, and back-up power systems;
  - Polychlorinated biphenyls (PCBs) containing devices such as lamp ballasts, wet-type transformers, and hydraulic systems;
  - Devices which may contain ozone depleting chemicals, such as Heating, Ventilation and Air Conditioning (HVAC) systems, refrigerators, freezers, fire suppression systems and water coolers/fountains;
  - Devices with low-level radioactive sources such as smoke detectors and exit signs.

## 2.0 METHODOLOGY

Vista performed the pre-renovation hazardous materials survey on January 26-27, 2026.

Vista's personnel on the project were:

- Christopher Burns, a State of California Division of Occupational Safety and Health (Cal/OSHA) Certified Asbestos Consultant (CAC) # 92-0224 and a State of California Department of Public Health (CDPH) Lead Related Construction Certified Inspector/Assessor (LRCIA) #LRC-00006938
- Javier Rocha, a Cal/OSHA Certified Site Surveillance Technician (CSST) #02-3244 and a CDPH Lead Related Construction Certified Sampling Technician (LRCST) #LRC-00000629

Vista's intent was to perform a thorough survey and made a good faith effort to access all building materials down to the structural components and/or interstitial spaces. Quantities and locations are based upon areas that were accessed. Materials similar to those in this report may be present in areas which were not accessed.

The vinyl membrane roof of 824 4<sup>th</sup> Street was excluded from this survey since it was recently installed, still under warranty, and was not anticipated to be part of this renovation project.

## 2.1 *Asbestos*

The asbestos survey was performed generally in accordance with the AHERA protocol (40 CFR Part 763, Subpart E). Visual identification was performed by assessing visible and accessible structural, architectural, and mechanical components for the presence of suspect ACM at the Project Site.

This limited ACM survey was conducted in the following manner:

- Suspect ACM was categorized into homogeneous materials. A homogeneous material is defined as being a surfacing material, thermal system insulation, or miscellaneous material which is uniform in color and texture. It may also be additionally subcategorized using the date of installation, when available.
- A sampling scheme was developed based upon the location and quantity of the suspect homogeneous ACM. A rough order of magnitude estimate of each suspect homogenous ACM was calculated and recorded for future reference. A sampling scheme, including a specific number of samples per suspect homogeneous ACM, was calculated prior to sampling.
- Sampling guidelines established by the United States Environmental Protection Agency (USEPA) were utilized for sampling each suspected homogeneous ACM. Methods described in Appendix K of 8 California Code of Regulation (CCR) 1529 were utilized in the collection of each suspect homogeneous ACM sample.
- Trained California asbestos certified personnel, using appropriate sampling tools and sterile leak-tight Whirl-pak® containers, collected building materials that were suspected to contain ACM.
- Each suspect ACM sample was collected and sealed in its container and appropriately labeled with a unique sample identification number and recorded on an asbestos bulk sampling log. Each log contains a chain-of-custody to assure the proper transition of the samples from Vista to the analytical laboratory.
- Sampling tools were decontaminated, by using a clean wet cloth, between collection of each suspect sample to prevent the possibility of cross contamination of subsequent suspect ACM samples.

Suspect ACM samples were delivered, under proper chain-of-custody protocol, to SGS located in Carson, CA. SGS is accredited under the National Voluntary Laboratory Accreditation Program (NVLAP) and the California Environmental Laboratory Accreditation Program (Cal-ELAP). The samples were submitted

for analysis by Polarized Light Microscopy (PLM) utilizing dispersion staining techniques in accordance with the EPA's "Method for the Determination of Asbestos in Bulk Building Materials" U.S. EPA/600/R-93/116, Visual Area Estimate, dated July 1993 and adopted by the NVLAP as Test Method Code 18/A01.

"Trace" asbestos containing plaster samples from 824 4<sup>th</sup> Street were further analyzed by 400-point count 40 CFR Part 763 Appendix E to Subpart E, EPA Method 600/M4-82-020; updated method 600 R-93/116 Determination of Asbestos in Bulk Building Materials with Gravimetric Reduction.

"Trace" asbestos containing concrete samples from 824 4<sup>th</sup> Street were further analyzed by 1000-point count 40 CFR Part 763 Appendix E to Subpart E, EPA Method 600/M4-82-020; updated method 600 R-93/116 Determination of Asbestos in Bulk Building Materials with Gravimetric Reduction.

## 2.2 *Lead*

Vista's lead construction screening assessment included collecting bulk samples of representative painted and coated surfaces in the path of construction for evaluation of lead levels for worker health and safety and preliminary waste characterization prior to construction activities. This survey was not a surface-by-surface inspection as outlined in the U.S. Department of Housing and Urban Development (HUD) Guidelines for the Evaluation and Control of Lead-Based Paint Hazards in Housing pursuant to Title X of the Housing and Community Development Act of 1992. These analytical data can be helpful in evaluation of lead-related environmental risks in general, but cannot be used to calculate worker exposures, are not a substitute for employee exposure monitoring, and are not sufficient for waste stream profiling.

Lead bulk samples were collected following United States Department of Housing and Urban Development (HUD) Appendix 13.2: Paint Chip sampling from the Guidelines for the Evaluation and Control of Lead-Based Paint Hazards in Housing, June 1995 and were delivered, under proper chain-of-custody protocol, to SGS in Carson, California. SGS is accredited under American Industrial Hygiene Association (AIHA), the Environmental Lead Laboratory Accreditation Program (ELLAP), and the California Department of Public Health (CDPH) for multiple metals analysis. The samples were prepared and analyzed by method EPA 3050B/7420, Flame Atomic Absorption (FAA).

## 2.3 *Other Hazardous Materials*

Devices with potential hazardous materials were visually identified during the survey walk-through and their quantities were estimated and recorded. No attempt was made to disassemble devices or sample suspect materials within the devices. For example, fluorescent light fixtures must be presumed to contain Universal Waste lamps, and ballasts which contain PCB oil are electronic waste, pending removal and disassembly of each unit to determine explicit product specific information that proves otherwise.

### 3.0 RESULTS

The following buildings were surveyed and contain the following hazardous materials:

Building	Asbestos	Lead-Based Paint or Materials	Lead Containing Paint	Universal Waste, Suspect PCBs, and Other Hazardous Materials
824 4 <sup>th</sup> Street	☑	☑	☑	☑
912 3 <sup>rd</sup> Street	☑	☑	☑	☑

The Hazardous Materials Summaries, Asbestos Sampling Inventories, Sample Location Drawings, Photo Documentation, Asbestos Analytical Reports, and Lead Analytical Reports can be found in *Appendix A – Building Data*.

The documents found in the appendices are not stand-alone documents and should not be separated from this report. Quantities and locations listed in the tables are order of magnitude estimates and are not to be used for bidding purposes. It is the sole responsibility of the contractor to verify quantities and locations of hazardous materials in the path of construction through site visits and contractual bid set documents, including, but not limited to all specifications, drawings, and addenda. Any discrepancies between the contractual bid set documentation and site visits must be submitted in writing to the Owner or Owner’s representative, prior to bidding.

NESHAPS classifications are based upon the material’s condition at the time of the survey or as rendered as a result of standard manual removal/demolition techniques. The use of “mechanical means”, non-standard or other aggressive removal/demolition techniques may result in a different classification.

### 4.0 RECOMMENDATIONS

#### 4.1 *Asbestos*

The results of the survey indicate that asbestos-containing materials **are present** at the Project Site.

Work performed during any activities that disturb the asbestos-containing materials identified in this report must be done in compliance with the most recent edition of all applicable federal, state, and local regulations, standards, and codes governing abatement, transport, and disposal of asbestos-containing materials. These include, but are not limited to, the following:

- CCR, Title 8, Chapter 3.2, Subchapter 2, Article 2.5 - Registration Asbestos-Related Work Sections 341.6 through 341.14
- CCR, Title 8, Section 1529 - Asbestos in the Construction Industry

- 40 CFR Part 61 USEPA National Emission Standards for Hazardous Air Pollutants (NESHAPS)
- 40 CFR Part 763 - Subpart E, Asbestos Containing Materials in Schools (AHERA)

Materials encountered in the buildings that are not part of this report must be properly sampled for the content of asbestos or assumed to be asbestos containing prior to any disturbance.

Prior to Class I and II activities which will disturb identified or assumed asbestos, a Cal/OSHA registered and California licensed asbestos contractor must be utilized for abatement of asbestos that will be impacted. Vista recommends that all abatement operations be conducted under the direction of a California Certified Asbestos Consultant.

#### 4.2 *Lead*

The results of the survey indicate that lead-based paints, and lead-containing paints and materials **are present** at the Project Site.

At present there is no state or federal regulation requiring mandatory lead removal or abatement prior to disturbance of building materials with identified lead paint or coatings. However, there are applicable Cal/OSHA worker protection and training requirements, Cal/EPA waste disposal requirements, CDPH requirements for public and residential buildings, and SB 460 lead hazard regulations that apply to lead-related construction activities, abatement activities and their associated wastes. The following is a brief discussion and summary of applicable regulatory requirements:

◆ **Cal/OSHA:** Title 8, California Code of Regulation (CCR), Section 1532.1 (8 CCR 1532.1) governs occupational exposure to lead. This regulation requires that prior to initiation of certain activities, referred to as “trigger tasks”, workers must be trained, medically evaluated, and properly fitted with respiratory protection, and protective clothing until statistically reliable personal eight-hour time weighted average (TWA) results indicate lead exposure levels below the Personal Exposure Limit (PEL) for each unique task which disturbs lead-based and lead-containing coatings. This process is known as a Negative Exposure Assessment or NEA.

If the result of the exposure assessment is above the Action Level (AL) additional monitoring is required and if the result is above the PEL additional exposure monitoring, worker protection (including respirator protection and PPE), training and medical requirements apply. However even where the NEA criteria is met, certain hazard communication training and work practice controls still apply where lead is disturbed. “Trigger tasks” are tasks that are assumed to exceed the PEL pending an exposure assessment and they encompass the majority of construction activities that disturb surface coatings. Examples of “trigger” tasks range from manual paint scraping as a lower expected exposure up to hot work and abrasive blasting

as the highest expected exposures, and include any non-listed task that the employer determines may potentially expose employees to lead levels above the AL.

*“OSHA does not consider any method that relies solely on the analysis of bulk materials or surface content of lead (or other toxic material) to be acceptable for safely predicting employee exposure to airborne contaminants. Without air monitoring results or without the benefit of historical or objective data (including air sampling which clearly demonstrates that the employee cannot be exposed above the action level during any process, operation, or activity) the analysis of bulk or surface samples cannot be used to determine employee exposure.” - OSHA Standard Interpretation May 8, 2000.*

OSHA states that these rules apply to “any detectable concentration of lead” without a specified detection level. Due to the Consumer Product Safety Commission currently allowing paint to contain up to 90 parts per million (ppm) or 0.009 wt% of lead, the variation of lead content due to aging and weathering, and the variation of detection limits associated with analysis of bulk materials, such as paint chips and surface content analysis via XRF, it is recommended that all painted or coated surfaces be treated as potentially containing lead. Positive analytical results by either method can be used to indicate that detectable lead is present but negative results cannot be interpreted as conclusively demonstrating the absence of lead.

Analytical data from analysis of bulk materials or surface content of lead can be helpful in evaluation of lead-related environmental risks in general but cannot be used to calculate worker exposures and are not a substitute for employee exposure monitoring. As a result of the above, any employee that works around potential lead-based or lead-containing coatings must have HAZCOM training and personal exposure air monitoring is additionally required for employees that disturb such coatings. Significant additional certification, notification, and work practices are required for materials found to be lead-based.

Any welding, cutting or heating of metal surfaces containing surface coatings should be conducted in accordance with 29 CFR 1926.354 and 8 CCR 1537. These regulations require surfaces covered with toxic preservatives, and in enclosed areas, be stripped of all toxic coatings for a distance of at least 4 inches, in all directions, from the area of heat application prior to the initiation of such heat application.

◆ **Cal/EPA** through the Division of Toxic Substance Control (DTSC) regulates disposal of lead hazardous waste (22 CCR Division 4.5, Minimum Standards for Management of Hazardous and Extremely Hazardous Wastes). DTSC has issued guidance indicating that architectural debris with intact lead paint is normally expected to be handled as general construction waste. However, waste stream segregation and analysis are still required for all lead painted or coated debris regardless if the paint or coating is intact on a building component or not. The resulting wastes may be hazardous under California and federal RCRA standards for lead and therefore require proper handling, packaging, labeling, and transportation under a proper manifest to a permitted hazardous waste storage, treatment and disposal facility.

◆ **CDPH:** The Department of Public Health (CDPH) has specific requirements (Title 17 Sections 35001 thru 36100 et. al.) for hazard assessment and work in public or residential structures in regards to lead-based paint. These regulations require special certifications, work practices, and notification for such activities.

◆ **Senate Bill 460 (SB 460):** An act to amend Section 1941.1 of the Civil Code, and to amend Sections 17961, 17980, and 124130 of, and to add Sections 17920.10, 105251, 105252, 105253, 105254, 105255, 105256, and 105257 to, the Health and Safety Code, relating to lead abatement. This bill allows for fines and criminal penalties to be levied on any person who is found to have performed lead abatement without containment or created a measurable “lead hazard” based upon current CDPH standards. A “lead hazard” means deteriorated lead-based paint, lead contaminated dust, lead contaminated soil, disturbing lead-based paint or presumed lead-based paint without containment, or any other nuisance which may result in persistent and quantifiable lead exposure.

Vista recommends that all parties that come into contact with paint and other materials that has detectable lead content follow all applicable federal, state and local regulations relating to employee health and safety and proper disposal of generated wastes.

#### 4.3 *Other Hazardous Materials*

The results of the survey indicate that other hazardous materials **are present** at the Project Site.

All potential and identified Universal Waste materials (UW) and Electronic Waste (E-Waste) impacted by the work should be removed and recycled or disposed of in accordance with the UW guidelines established by the DTSC, as stated in 22 CCR Sections 66261.9 and 66273.1 thru 66273.90.

Vista’s limited visual survey indicated that light fixtures with ballasts that may contain PCB oil are present. However, due to the limited nature of the random spot checks, Vista recommends that all ballasts be visually inspected prior to disposal to determine if they contain PCBs. Those ballasts marked No PCB’s or PCB Free can be considered as such as should be treated as UW - electronic waste.

Devices containing ozone depleting chemicals, low-level radioactive sources, petroleum or other chemicals, should be collected, waste characterized, disposed or recycled according to California rules and regulations.

All personnel who perform hazardous materials work must be trained and qualified to do so. They must also follow the most current OSHA regulations including 29 CFR 1910.120 and 8 CCR 5192, Hazardous Waste Operations and Emergency Response, as well as other applicable federal, state and local laws and regulations.

## 5.0 LIMITATIONS & EXCLUSIONS

Quantities and locations are based upon areas that were accessed. Materials similar to those in this report may be present in areas which were not accessed. Because of this, Vista recommends including line-item pricing, allowances, and/or additive/deductive wording to bid sheets for unforeseen conditions.

All material quantities reported herein are rough order of magnitude estimates and should not be used for bidding purposes. All contractors are responsible for accurately determining quantities and locations of materials identified in this report.

The survey performed was limited to representative rooms/areas and did not include access of areas and sampling of materials which would have required large scale destructive testing. Vista made a good faith effort based on accepted industry standards to perform a thorough survey and access all areas in order to assess their potential for having hazardous materials.

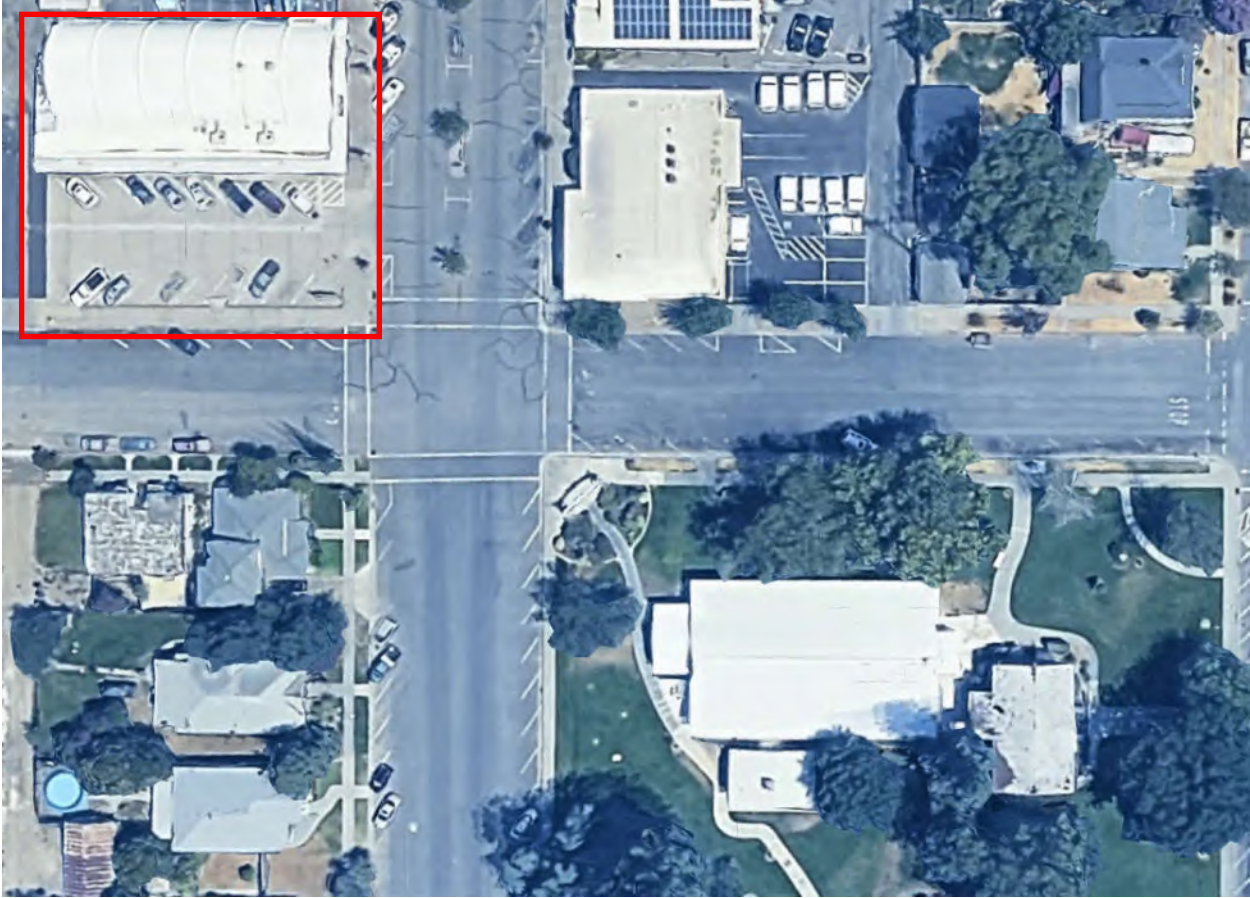
Respectfully Submitted,  
Vista Environmental Consulting



Christopher R. Burns  
Senior Project Manager  
CAC #92-0224  
LRCIA #LRC-00006938

**APPENDIX A**  
**BUILDING DATA**

## 824 4<sup>TH</sup> STREET, ORLAND



*The information contained in these appendices are not stand-alone documents and should not be separated from this report. For specific regulatory requirements regarding these materials please refer to the information provided in the Main Report. Quantities and locations listed in the tables are order of magnitude estimates and are not to be used for bidding purposes. It is the sole responsibility of the contractor to verify quantities and locations of hazardous materials in the path of construction through site visits and contractual bid set documents, including, but not limited to all specifications, drawings, and addenda. Any discrepancies between the contractual bid set documentation and site visits must be submitted in writing to the Owner or Owner's representative, prior to bidding.*

*NESHAP classifications are based upon the material's condition at the time of the survey or as rendered as a result of standard manual removal/demolition techniques. The use of "mechanical means", non-standard or other aggressive removal/demolition techniques may result in a different classification. NESHAP & Cal-OSHA classifications are based on the materials being >1% asbestos pending further analytical data that proves otherwise.*

# 824 4<sup>TH</sup> STREET, ORLAND HAZARDOUS MATERIALS SUMMARY

## *Asbestos*

HOMO. ID	MATERIAL	DESCRIPTION	LOCATION	CAL/OSHA CLASS	NESHAP CATEGORY	ESTIMATED QUANTITY
X	Sealant	Gray, Flashing	Exterior - West Side	Class II	Category I - Non-Friable	20 SF (80 LF)
Z	Concrete	Gray, Driveway	Exterior - South Side	Unclassified (<0.08% to 0.08% by 1000-Point Count)	NA (<0.08% to 0.08% by 1000-Point Count)	7,000 SF
AA	Concrete	Gray, Foundation	Exterior - South Side	Unclassified (Layer 0.07% by Point Count)	NA (Layer 0.07% by Point Count)	800 SF
CC	Putty	White, Metal Windows	Exterior East Side, Upper	Class II	Category II - Non-Friable	300 SF (Windows)
DD	Insulators	Unknown. Switch Gear	West Side Closed in area near Walk-in Freezer (Assumed Energized), West Side Exterior Upper Wall	Class II	Category II - Non-Friable	10 SF
GG	Paint/Plaster	White/Gray, Walls & Ceiling	Mechanical Room Restroom Area - Walls and Ceiling, South Side enclosed concrete curved columns.	Unclassified (Layer <0.16% to 0.16% by 400-Point Count)	NA (Layer <0.16% to 0.16% by 400-Point Count)	1,400 SF
II	Mastic	Silver & Gray, Metal Roof	Exterior West Side Corrugated Metal Roof	Class II	Category I - Non-Friable	S SF
JJ	Mastic/Felt	Gray & Black, Flashing	Exterior - West side below Upper Metal Windows.	Class II	Category I - Non-Friable	20 SF (80 LF)

## *Lead*

Sample #	Component	Substrate	Color	Location	Result	Units
824-PB01	Walls	Stucco	Red	Exterior	0.007	wt%
824-PB02	Walls	Concrete	Light Brown	Exterior	1.5	wt%

824 4<sup>TH</sup> STREET, ORLAND  
HAZARDOUS MATERIALS SUMMARY

Sample #	Component	Substrate	Color	Location	Result	Units
<b>824-PB03</b>	<b>Trim</b>	<b>Metal</b>	<b>Beige</b>	<b>Exterior</b>	<b>0.67</b>	<b>wt%</b>
824-PB04	Parking Stripe	Concrete	White	Exterior	0.046	wt%
<b>824-PB05</b>	<b>Parking Stripe</b>	<b>Concrete</b>	<b>Yellow</b>	<b>Exterior</b>	<b>8</b>	<b>wt%</b>
<b>824-PB06</b>	<b>Walls</b>	<b>Concrete</b>	<b>Light Gray</b>	<b>Exterior</b>	<b>1.2</b>	<b>wt%</b>
<b>824-PB07</b>	<b>Walls, Ceilings, &amp; Columns</b>	<b>Plaster &amp; Drywall</b>	<b>Off-White</b>	<b>Interior - East</b>	<b>0.89</b>	<b>wt%</b>
824-PB08	Wainscot, Doors & Door Frames	Wood	Black	Interior - East	<0.006	wt%
824-PB09	Walls & Columns	Plaster & Drywall	Gren	Interior - East	<0.006	wt%
824-PB10	Floor	Vinyl	Gray	Interior - East	0.0015	wt%
824-PB11	Floor	Vinyl	Blue	Interior - East	<0.0006	wt%
824-PB12	Column	Plaster	Gray	Interior - West	0.091	wt%
824-PB13	Walls	Drywall	White	Interior - West	<0.006	wt%
<b>824-PB14</b>	<b>Walls &amp; Ceiling</b>	<b>Plaster</b>	<b>White</b>	<b>Interior - West</b>	<b>1.4</b>	<b>wt%</b>
<b>824-PB15</b>	<b>Doors</b>	<b>Wood</b>	<b>Light Green</b>	<b>Interior - West</b>	<b>0.71</b>	<b>wt%</b>
<b>824-PB16</b>	<b>Walls</b>	<b>Concrete</b>	<b>White</b>	<b>Interior - West</b>	<b>0.58</b>	<b>wt%</b>

**Bold** =Lead-Based

*Devices with Potential Hazardous Materials*

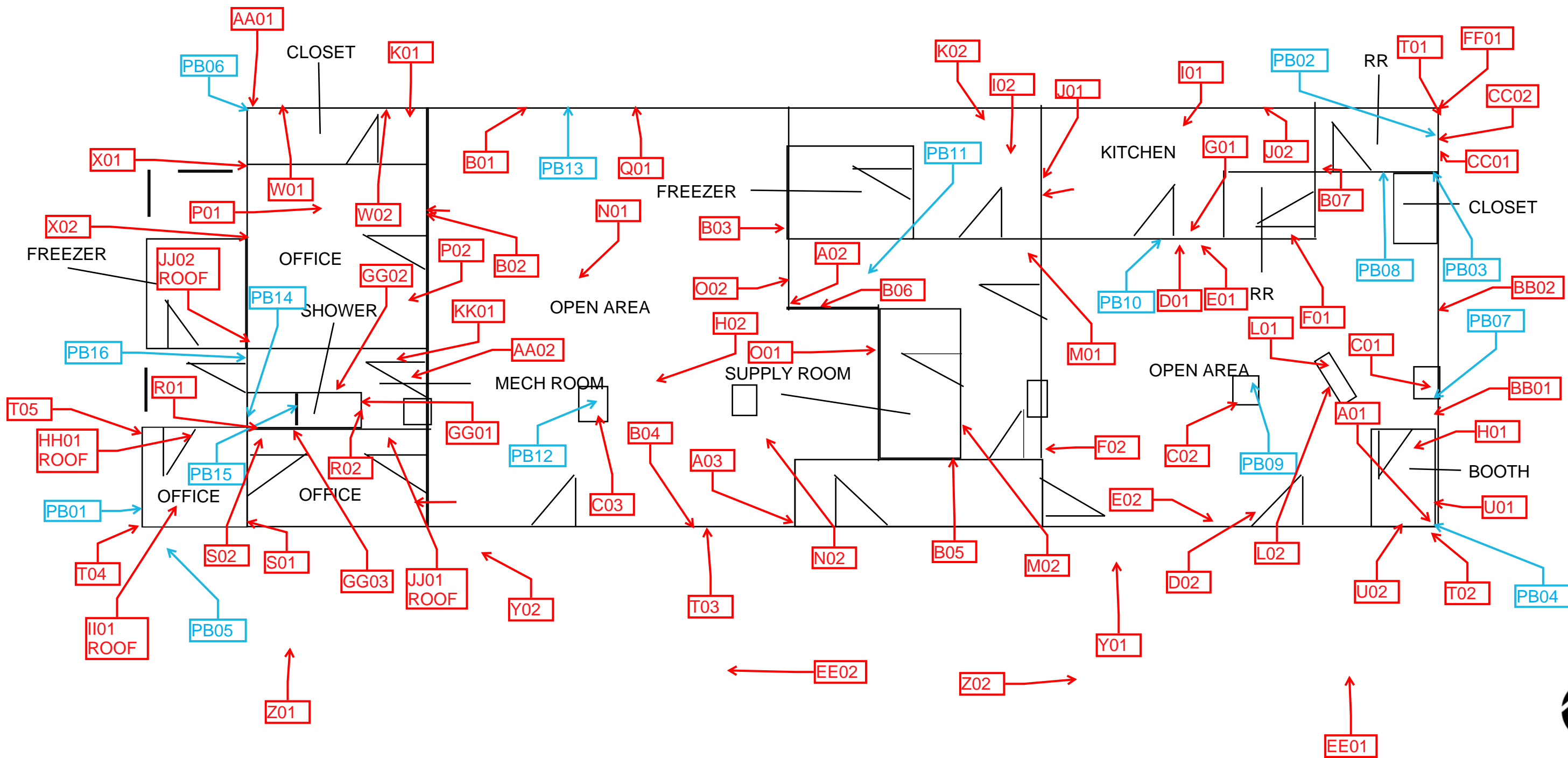
MATERIAL	CONTAMINANT	ESTIMATED QUANTITY
Fluorescent Tubes (4' Length)	Universal Waste	198
Other Non-Incandescent Lamps	Universal Waste	5
Electronic Waste: Monitors Etc.	Universal Waste	2
Batteries: Emergency Lights & Exit Signs	Universal Waste	7
Light Fixture Ballasts	Polychlorinated Biphenyls	108
HVAC Unit	Ozone Depleting Chemicals	2
Refrigerators	Ozone Depleting Chemicals	4
Walk-in Refrigerator	Ozone Depleting Chemicals	1
Thermostat Trigger	Mercury	1

**824 4<sup>TH</sup> STREET, ORLAND**  
**ASBESTOS SAMPLING INVENTORY**

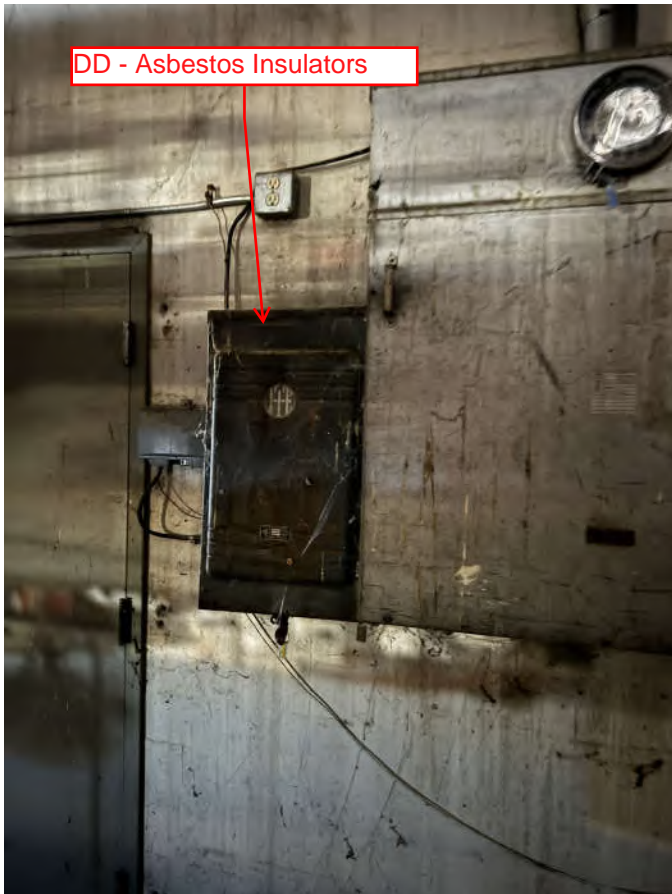
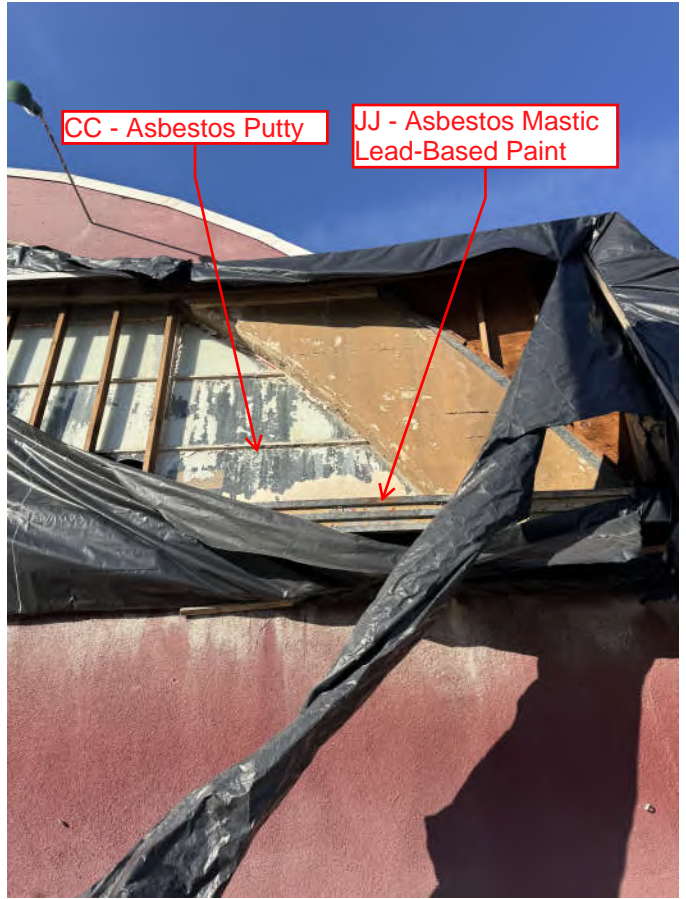
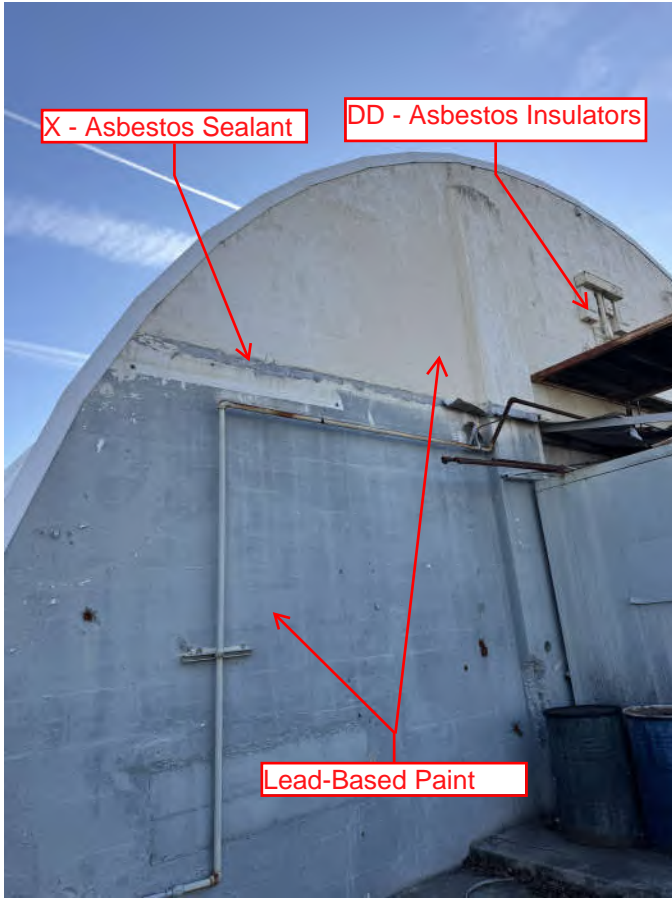
<b>HOMOGENEOUS ID</b>	<b>MATERIAL</b>	<b>DESCRIPTION</b>	<b># OF SAMPLES</b>
A	Wallboard/Joint Compound	White/White	3
B	Texture Coat	White, Small	7
C	Plaster	White & Gray, Curved Walls & Collums	3
D	Vinyl Floor Tile/Mastic	12" Black/Yellow	2
E	Vinyl Floor Tile/Mastic	12" Gray/Yellow	2
F	Basecove/Mastic	4" Black/Yellow	2
G	Vinyl Sheet Flooring/Mastic	Gray Speckled/Beige	2
H	Acoustical Ceiling Panel	2'x4' White, Fissured	2
I	Acoustical Ceiling Panel	2'x4' White, Solid	2
J	Mastic	Yellow, FRP Panel	2
K	Acoustical Ceiling Tile	1' x2'; White, Tacked On	2
L	Vinyl Sheet Flooring/Backing	Beige, Faux Stones/Gray	2
M	Vinyl Sheet Flooring/Mastic	Blue/Yellow	2
N	Vinyl Floor Tile/Mastic	12" Beige/Yellow	2
O	Wallboard/Joint Compound	White/White, Unfinished	2
P	Mastic/Leveling Compound	Yellow/White, Carpet	2
Q	Patch	Dark Gray, Concrete	1
R	Lathe	White, Button Board	2
S	Spray Applied Acoustical Ceiling	White	3
T	Paint/Stucco	Red/Gray	5
U	Lathe	White, Stucco	2
V	Not Used	Not Used	NA
W	Paint/Concrete	Beige/Gray, Walls	2

824 4<sup>TH</sup> STREET, ORLAND  
 ASBESTOS SAMPLING INVENTORY

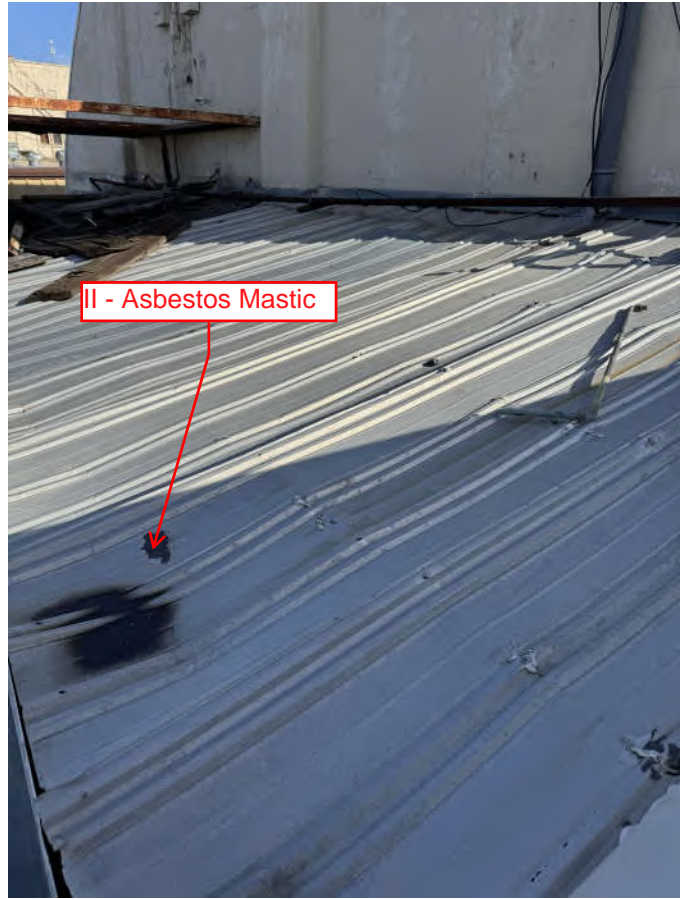
HOMOGENEOUS ID	MATERIAL	DESCRIPTION	# OF SAMPLES
X	Sealant	Gray, Flashing	2
Y	Concrete	Gray, Walkway	2
Z	Concrete	Gray, Driveway	2
AA	Concrete	Gray, Foundation	2
BB	Sealant	White, Aluminum Window Frame	2
CC	Putty	White, Metal Windows	2
DD	Insulators	Unknown. Switch Gear	Assumed
EE	Concrete	Gray, Parking Lot Patches	2
FF	Sealant	White, Wall Seams	1
GG	Paint/Plaster	White/Gray, Walls & Ceiling	3
HH	Sealant	White, Metal Roof	1
II	Mastic	Silver & Gray, Metal Roof	1
JJ	Mastic/Felt	Gray & Black, Flashing	2
KK	Insulation	Brown, Fire Door	1



824 4TH ST., ORLAND, CA  
PHOTO DOCUMENTATION



824 4TH ST., ORLAND, CA  
PHOTO DOCUMENTATION



# Bulk Asbestos Analysis

(EPA Method 40CFR, Part 763, Appendix E to Subpart E and EPA 600/R-93-116, Visual Area Estimation)  
 NVLAP Lab Code: 101459-1

Vista Environmental Consultants  
 Chris Burns  
 2984 Teagarden St.  
  
 San Leandro, CA 94577

**Client ID:** L1161  
**Report Number:** B380516  
**Date Received:** 01/30/26  
**Date Analyzed:** 02/04/26  
**Date Printed:** 02/04/26  
**First Reported:** 02/04/26

**Job ID/Site:** 250036001; 824 4th St., Orland

**SGSFL Job ID:** L1161  
**Total Samples Submitted:** 77  
**Total Samples Analyzed:** 77

**Date(s) Collected:** 01/27/2026

Sample ID	Lab Number	Asbestos Type	Percent in Layer	Asbestos Type	Percent in Layer	Asbestos Type	Percent in Layer
<b>824-A-01</b>	51917410						
Layer: White Drywall			ND				
Layer: Off-White Joint Compound			ND				
Layer: Paint			ND				
Total Percentage Values of Non-Asbestos Fibrous Components:							
Cellulose (20 %)	Fibrous Glass (10 %)						
<b>824-A-02</b>	51917411						
Layer: White Drywall			ND				
Layer: Off-White Joint Compound			ND				
Layer: Drywall Tape			ND				
Layer: Off-White Joint Compound			ND				
Layer: Paint			ND				
Total Percentage Values of Non-Asbestos Fibrous Components:							
Cellulose (20 %)	Fibrous Glass (10 %)						
<b>824-A-03</b>	51917412						
Layer: White Drywall			ND				
Layer: Off-White Joint Compound			ND				
Total Percentage Values of Non-Asbestos Fibrous Components:							
Cellulose (20 %)							
<b>824-B-01</b>	51917413						
Layer: Grey Cementitious Material			ND				
Layer: Off-White Joint Compound			ND				
Layer: Paint			ND				
Total Percentage Values of Non-Asbestos Fibrous Components:							
Cellulose (Trace)							
<b>824-B-02</b>	51917414						
Layer: Off-White Joint Compound			ND				
Layer: Paint			ND				
Total Percentage Values of Non-Asbestos Fibrous Components:							
Cellulose (Trace)							

Client Name: Vista Environmental Consultants

Report Number: B380516

Date Printed: 02/04/26

Sample ID	Lab Number	Asbestos Type	Percent in Layer	Asbestos Type	Percent in Layer	Asbestos Type	Percent in Layer
<b>824-B-03</b>	51917415						
Layer: Off-White Joint Compound			ND				
Layer: Paint			ND				
Total Percentage Values of Non-Asbestos Fibrous Components: Cellulose (Trace)							
<b>824-B-04</b>	51917416						
Layer: Off-White Joint Compound			ND				
Layer: Paint			ND				
Total Percentage Values of Non-Asbestos Fibrous Components: Cellulose (Trace)							
<b>824-B-05</b>	51917417						
Layer: Off-White Joint Compound			ND				
Layer: Paint			ND				
Total Percentage Values of Non-Asbestos Fibrous Components: Cellulose (Trace)							
<b>824-B-06</b>	51917418						
Layer: Off-White Joint Compound			ND				
Layer: Paint			ND				
Total Percentage Values of Non-Asbestos Fibrous Components: Cellulose (Trace)							
<b>824-B-07</b>	51917419						
Layer: Off-White Joint Compound			ND				
Layer: Paint			ND				
Total Percentage Values of Non-Asbestos Fibrous Components: Cellulose (Trace)							
<b>824-C-01</b>	51917420						
Layer: White Plaster			ND				
Layer: Paint			ND				
Total Percentage Values of Non-Asbestos Fibrous Components: Cellulose (Trace)							
<b>824-C-02</b>	51917421						
Layer: White Plaster			ND				
Layer: Paint			ND				
Total Percentage Values of Non-Asbestos Fibrous Components: Cellulose (Trace)							
<b>824-C-03</b>	51917422						
Layer: White Plaster			ND				
Layer: Paint			ND				
Total Percentage Values of Non-Asbestos Fibrous Components: Cellulose (Trace)							

Client Name: Vista Environmental Consultants

Report Number: B380516

Date Printed: 02/04/26

Sample ID	Lab Number	Asbestos Type	Percent in Layer	Asbestos Type	Percent in Layer	Asbestos Type	Percent in Layer
<b>824-D-01</b>	51917423						
Layer: Black Tile			ND				
Layer: Beige Mastic			ND				
Total Percentage Values of Non-Asbestos Fibrous Components: Cellulose (Trace)							
<b>824-D-02</b>	51917424						
Layer: Black Tile			ND				
Layer: Beige Mastic			ND				
Total Percentage Values of Non-Asbestos Fibrous Components: Cellulose (Trace)							
<b>824-E-01</b>	51917425						
Layer: Grey Tile			ND				
Layer: Tan Mastic			ND				
Total Percentage Values of Non-Asbestos Fibrous Components: Cellulose (Trace)							
<b>824-E-02</b>	51917426						
Layer: Grey Tile			ND				
Layer: Tan Mastic			ND				
Total Percentage Values of Non-Asbestos Fibrous Components: Cellulose (Trace)							
<b>824-F-01</b>	51917427						
Layer: Black Non-Fibrous Material			ND				
Layer: Beige Mastic			ND				
Total Percentage Values of Non-Asbestos Fibrous Components: Cellulose (Trace)							
<b>824-F-02</b>	51917428						
Layer: Black Non-Fibrous Material			ND				
Layer: Beige Mastic			ND				
Total Percentage Values of Non-Asbestos Fibrous Components: Cellulose (Trace)							
<b>824-G-01</b>	51917429						
Layer: Grey/Black Sheet Flooring			ND				
Layer: Fibrous Backing			ND				
Total Percentage Values of Non-Asbestos Fibrous Components: Cellulose (20 %)    Fibrous Glass (5 %)    Synthetic (10 %)							
<b>824-G-02</b>	51917430						
Layer: Grey/Black Sheet Flooring			ND				
Layer: Fibrous Backing			ND				
Total Percentage Values of Non-Asbestos Fibrous Components: Cellulose (20 %)    Fibrous Glass (5 %)    Synthetic (10 %)							

Client Name: Vista Environmental Consultants

Report Number: B380516

Date Printed: 02/04/26

Sample ID	Lab Number	Asbestos Type	Percent in Layer	Asbestos Type	Percent in Layer	Asbestos Type	Percent in Layer
<b>824-H-01</b>	51917431						
Layer: Beige Fibrous Material			ND				
Layer: Paint			ND				
Total Percentage Values of Non-Asbestos Fibrous Components:							
Cellulose (35 %)		Fibrous Glass (45 %)					
<b>824-H-02</b>	51917432						
Layer: Beige Fibrous Material			ND				
Layer: Paint			ND				
Total Percentage Values of Non-Asbestos Fibrous Components:							
Cellulose (35 %)		Fibrous Glass (45 %)					
<b>824-I-01</b>	51917433						
Layer: Beige Fibrous Material			ND				
Layer: Paint			ND				
Total Percentage Values of Non-Asbestos Fibrous Components:							
Cellulose (35 %)		Fibrous Glass (45 %)					
<b>824-I-02</b>	51917434						
Layer: Beige Fibrous Material			ND				
Layer: Paint			ND				
Total Percentage Values of Non-Asbestos Fibrous Components:							
Cellulose (35 %)		Fibrous Glass (45 %)					
<b>824-J-01</b>	51917435						
Layer: Off-White Mastic			ND				
Total Percentage Values of Non-Asbestos Fibrous Components:							
Cellulose (Trace)							
<b>824-J-02</b>	51917436						
Layer: Off-White Mastic			ND				
Total Percentage Values of Non-Asbestos Fibrous Components:							
Cellulose (Trace)							
<b>824-K-01</b>	51917437						
Layer: Brown Fibrous Material			ND				
Total Percentage Values of Non-Asbestos Fibrous Components:							
Cellulose (80 %)							
<b>824-K-02</b>	51917438						
Layer: Brown Fibrous Material			ND				
Total Percentage Values of Non-Asbestos Fibrous Components:							
Cellulose (80 %)							
<b>824-L-01</b>	51917439						
Layer: Beige Sheet Flooring			ND				
Layer: Fibrous Backing			ND				
Total Percentage Values of Non-Asbestos Fibrous Components:							
Cellulose (20 %)		Fibrous Glass (5 %)		Synthetic (10 %)			

Client Name: Vista Environmental Consultants

Report Number: B380516

Date Printed: 02/04/26

Sample ID	Lab Number	Asbestos Type	Percent in Layer	Asbestos Type	Percent in Layer	Asbestos Type	Percent in Layer
<b>824-L-02</b>	51917440						
Layer: Beige Sheet Flooring			ND				
Layer: Fibrous Backing			ND				
Total Percentage Values of Non-Asbestos Fibrous Components:							
Cellulose (20 %)	Fibrous Glass (5 %)	Synthetic (10 %)					
<b>824-M-01</b>	51917441						
Layer: Blue Tile			ND				
Layer: Beige Mastic			ND				
Total Percentage Values of Non-Asbestos Fibrous Components:							
Cellulose (Trace)							
<b>824-M-02</b>	51917442						
Layer: Blue Tile			ND				
Layer: Beige Mastic			ND				
Total Percentage Values of Non-Asbestos Fibrous Components:							
Cellulose (Trace)							
<b>824-N-01</b>	51917443						
Layer: Beige Tile			ND				
Layer: Tan Mastic			ND				
Total Percentage Values of Non-Asbestos Fibrous Components:							
Cellulose (Trace)							
<b>824-N-02</b>	51917444						
Layer: Beige Tile			ND				
Layer: Tan Mastic			ND				
Total Percentage Values of Non-Asbestos Fibrous Components:							
Cellulose (Trace)							
<b>824-O-01</b>	51917445						
Layer: White Drywall			ND				
Layer: Off-White Joint Compound			ND				
Total Percentage Values of Non-Asbestos Fibrous Components:							
Cellulose (20 %)							
<b>824-O-02</b>	51917446						
Layer: White Drywall			ND				
Layer: Off-White Joint Compound			ND				
Total Percentage Values of Non-Asbestos Fibrous Components:							
Cellulose (20 %)							
<b>824-P-01</b>	51917447						
Layer: Off-White Non-Fibrous Material			ND				
Layer: Tan Mastic			ND				
Total Percentage Values of Non-Asbestos Fibrous Components:							
Cellulose (Trace)							

Client Name: Vista Environmental Consultants

Report Number: B380516

Date Printed: 02/04/26

Sample ID	Lab Number	Asbestos Type	Percent in Layer	Asbestos Type	Percent in Layer	Asbestos Type	Percent in Layer
<b>824-P-02</b>	51917448						
Layer: Off-White Non-Fibrous Material			ND				
Layer: Tan Mastic			ND				
Total Percentage Values of Non-Asbestos Fibrous Components: Cellulose (Trace)							
<b>824-Q-01</b>	51917449						
Layer: Grey Cementitious Material			ND				
Layer: Paint			ND				
Total Percentage Values of Non-Asbestos Fibrous Components: Cellulose (Trace)							
<b>824-R-01</b>	51917450						
Layer: White Drywall			ND				
Total Percentage Values of Non-Asbestos Fibrous Components: Cellulose (20 %)							
<b>824-R-02</b>	51917451						
Layer: White Drywall			ND				
Total Percentage Values of Non-Asbestos Fibrous Components: Cellulose (20 %)							
<b>824-S-01</b>	51917452						
Layer: White Non-Fibrous Material			ND				
Total Percentage Values of Non-Asbestos Fibrous Components: Cellulose (Trace)							
<b>824-S-02</b>	51917453						
Layer: White Non-Fibrous Material			ND				
Total Percentage Values of Non-Asbestos Fibrous Components: Cellulose (Trace)							
<b>824-S-03</b>	51917454						
Layer: White Non-Fibrous Material			ND				
Total Percentage Values of Non-Asbestos Fibrous Components: Cellulose (Trace)							
<b>824-T-01</b>	51917455						
Layer: Grey Cementitious Material			ND				
Layer: Beige Cementitious Material			ND				
Layer: Paint			ND				
Total Percentage Values of Non-Asbestos Fibrous Components: Cellulose (Trace)							
<b>824-T-02</b>	51917456						
Layer: Light Grey Non-Fibrous Material			ND				
Layer: Dark Grey Cementitious Material			ND				
Layer: Paint			ND				
Total Percentage Values of Non-Asbestos Fibrous Components: Cellulose (Trace)							

Client Name: Vista Environmental Consultants

Report Number: B380516

Date Printed: 02/04/26

Sample ID	Lab Number	Asbestos Type	Percent in Layer	Asbestos Type	Percent in Layer	Asbestos Type	Percent in Layer
<b>824-T-03</b>	51917457						
Layer: Grey Cementitious Material			ND				
Layer: Paint			ND				
Total Percentage Values of Non-Asbestos Fibrous Components: Cellulose (Trace)							
<b>824-T-04</b>	51917458						
Layer: Grey Cementitious Material			ND				
Layer: Beige Cementitious Material			ND				
Layer: Paint			ND				
Total Percentage Values of Non-Asbestos Fibrous Components: Cellulose (Trace)							
<b>824-T-05</b>	51917459						
Layer: Grey Cementitious Material			ND				
Layer: Beige Cementitious Material			ND				
Layer: Paint			ND				
Total Percentage Values of Non-Asbestos Fibrous Components: Cellulose (Trace)							
<b>824-U-01</b>	51917460						
Layer: White Drywall			ND				
Total Percentage Values of Non-Asbestos Fibrous Components: Cellulose (20 %)							
<b>824-U-02</b>	51917461						
Layer: White Drywall			ND				
Total Percentage Values of Non-Asbestos Fibrous Components: Cellulose (20 %)							
<b>824-W-01</b>	51917462						
Layer: Grey Cementitious Material			ND				
Layer: Paint			ND				
Total Percentage Values of Non-Asbestos Fibrous Components: Cellulose (Trace)							
<b>824-W-02</b>	51917463						
Layer: Grey Cementitious Material			ND				
Layer: Paint			ND				
Total Percentage Values of Non-Asbestos Fibrous Components: Cellulose (Trace)							
<b>824-X-01</b>	51917464						
Layer: Beige Mastic		Chrysotile	5 %				
Layer: Paint			ND				
Total Percentage Values of Non-Asbestos Fibrous Components: Cellulose (Trace)							

Client Name: Vista Environmental Consultants

Report Number: B380516

Date Printed: 02/04/26

Sample ID	Lab Number	Asbestos Type	Percent in Layer	Asbestos Type	Percent in Layer	Asbestos Type	Percent in Layer
<b>824-X-02</b>	51917465						
Layer: Beige Mastic		Chrysotile	5 %				
Layer: Paint			ND				
Total Percentage Values of Non-Asbestos Fibrous Components: Cellulose (Trace)							
<b>824-Y-01</b>	51917466						
Layer: Grey Cementitious Material			ND				
Total Percentage Values of Non-Asbestos Fibrous Components: Cellulose (Trace)							
<b>824-Y-02</b>	51917467						
Layer: Grey Cementitious Material			ND				
Total Percentage Values of Non-Asbestos Fibrous Components: Cellulose (Trace)							
<b>824-Z-01</b>	51917468						
Layer: Grey Cementitious Material		Chrysotile	Trace				
Total Percentage Values of Non-Asbestos Fibrous Components: Cellulose (Trace)							
<b>824-Z-02</b>	51917469						
Layer: Grey Cementitious Material		Chrysotile	Trace				
Total Percentage Values of Non-Asbestos Fibrous Components: Cellulose (Trace)							
<b>824-AA-01</b>	51917470						
Layer: Grey Cementitious Material		Chrysotile	Trace				
Total Percentage Values of Non-Asbestos Fibrous Components: Cellulose (Trace)							
<b>824-AA-02</b>	51917471						
Layer: Grey Cementitious Material		Chrysotile	Trace				
Total Percentage Values of Non-Asbestos Fibrous Components: Cellulose (Trace)							
<b>824-BB-01</b>	51917472						
Layer: Beige Non-Fibrous Material			ND				
Total Percentage Values of Non-Asbestos Fibrous Components: Cellulose (Trace)							
<b>824-BB-02</b>	51917473						
Layer: Beige Non-Fibrous Material			ND				
Total Percentage Values of Non-Asbestos Fibrous Components: Cellulose (Trace)							
<b>824-CC-01</b>	51917474						
Layer: Beige Putty		Chrysotile	2 %				
Layer: Paint			ND				
Total Percentage Values of Non-Asbestos Fibrous Components: Cellulose (Trace)							

Client Name: Vista Environmental Consultants

Report Number: B380516

Date Printed: 02/04/26

Sample ID	Lab Number	Asbestos Type	Percent in Layer	Asbestos Type	Percent in Layer	Asbestos Type	Percent in Layer
<b>824-CC-02</b>	51917475						
Layer: Grey Putty			<b>ND</b>				
Layer: Paint			<b>ND</b>				
Total Percentage Values of Non-Asbestos Fibrous Components: Cellulose (Trace)							
<b>824-EE-01</b>	51917476						
Layer: Grey Cementitious Material			<b>ND</b>				
Total Percentage Values of Non-Asbestos Fibrous Components: Cellulose (Trace)							
<b>824-EE-02</b>	51917477						
Layer: Grey Cementitious Material			<b>ND</b>				
Total Percentage Values of Non-Asbestos Fibrous Components: Cellulose (Trace)							
<b>824-FF-01</b>	51917478						
Layer: Grey Cementitious Material			<b>ND</b>				
Layer: Paint			<b>ND</b>				
Total Percentage Values of Non-Asbestos Fibrous Components: Cellulose (Trace)							
<b>824-GG-01</b>	51917479						
Layer: White Drywall			<b>ND</b>				
Layer: White Plaster			<b>ND</b>				
Layer: Paint			<b>ND</b>				
Total Percentage Values of Non-Asbestos Fibrous Components: Cellulose (Trace)							
<b>824-GG-02</b>	51917480						
Layer: White Drywall			<b>ND</b>				
Layer: White Plaster		Chrysotile	<b>Trace</b>				
Layer: Paint			<b>ND</b>				
Total Percentage Values of Non-Asbestos Fibrous Components: Cellulose (Trace)							
<b>824-GG-03</b>	51917481						
Layer: White Drywall			<b>ND</b>				
Layer: White Plaster		Chrysotile	<b>Trace</b>				
Layer: Paint			<b>ND</b>				
Total Percentage Values of Non-Asbestos Fibrous Components: Cellulose (Trace)							
<b>824-HH-01</b>	51917482						
Layer: Off-White Non-Fibrous Material			<b>ND</b>				
Total Percentage Values of Non-Asbestos Fibrous Components: Cellulose (Trace)							

Client Name: Vista Environmental Consultants

Report Number: B380516

Date Printed: 02/04/26

Sample ID	Lab Number	Asbestos Type	Percent in Layer	Asbestos Type	Percent in Layer	Asbestos Type	Percent in Layer
<b>824-II-01</b>	51917483						
Layer: Black Mastic		Chrysotile	5 %				
Layer: Paint			ND				
Total Percentage Values of Non-Asbestos Fibrous Components:							
Cellulose (Trace)							
<b>824-JJ-01</b>	51917484						
Layer: Black Tar			ND				
Layer: Black Felt			ND				
Total Percentage Values of Non-Asbestos Fibrous Components:							
Cellulose (40 %) Fibrous Glass (35 %)							
<b>824-JJ-02</b>	51917485						
Layer: Black Tar with Debris		Chrysotile	2 %				
Layer: Black Felt			ND				
Total Percentage Values of Non-Asbestos Fibrous Components:							
Cellulose (40 %) Fibrous Glass (35 %)							
<b>824-KK-01</b>	51917486						
Layer: Brown Fibrous Material			ND				
Total Percentage Values of Non-Asbestos Fibrous Components:							
Cellulose (80 %)							



Vincent To, Laboratory Supervisor, Carson Laboratory

Note: Limit of Quantification ('LOQ') = 1%. 'Trace' denotes the presence of asbestos below the LOQ. 'ND' = 'None Detected'.

Inhomogeneous samples are separated into homogenous subsamples and analyzed individually. Analytical results and reports are generated by SGS at the request of and for the exclusive use of the person or entity (client) named on such report. Results, reports or copies of same will not be released by SGS to any third party without prior written request from client. This report applies only to the sample(s) tested. Supporting laboratory documentation is available upon request. This report must not be reproduced except in full, unless approved by SGS. The client is solely responsible for the use and interpretation of test results and reports requested from SGS. This report must not be used by the client to claim product endorsement by NVLAP or any other agency of the U.S. Government. SGS is not able to assess the degree of hazard resulting from materials analyzed. SGS reserves the right to dispose of all samples after a period of thirty (30) days, according to all state and federal guidelines, unless otherwise specified. All samples were received in acceptable condition unless otherwise noted.



VISTA ENVIRONMENTAL  
CONSULTING

ASBESTOS BULK SAMPLE LOG

2984 TEAGARDEN STREET  
SAN LEANDRO, CA 94577

OFFICE 510.346.8860  
FAX 888.653.8889

CLIENT: PARC

DATE: 01/27/26

LOCATION: 824 4th St., Orland

PROJECT NUMBER: 250036001

SAMPLED BY: CB

CAC OR SST No: 92-0224

BUILDING	HOMO AREA ID	NUMBER	MATERIAL	DESCRIPTION	LOCATION	QUANTITY (SF/LF/EA)
824	A	01	WB/SC	WHITE/WHITE	WITH TEXTURE	
824	A	02				
824	A	03				
824	B	01	TEXTURE COAT	WHITE, SMALL	WALLS	
824	B	02				
824	B	03				
824	B	04				
824	B	05				
824	B	06				
824	B	07				

ANALYTICAL METHOD: PLM 400 PT COUNT      TURNAROUND TIME: SAME DAY 24HR 48 HR 3 DAY

DATA SENT TO: Christopher Burns Via E-Mail: [chrisburns@vista-env.com](mailto:chrisburns@vista-env.com) ; [nocaladmin@vista-env.com](mailto:nocaladmin@vista-env.com)  
Questions call: Office\_510.346.8860 Cell\_925.348.5361

SPECIAL INSTRUCTIONS:

CHAIN OF CUSTODY:

1. [Signature]  
TRANSFER SIGNATURE

MUSJ. Rocha  
PRINTED NAME

01/27/26 - 0900  
DATE/TIME

Received

2. [Signature]  
TRANSFER SIGNATURE

Shirlysa Tieng  
PRINTED NAME

1/30/26 935 FX  
DATE/TIME

3. \_\_\_\_\_  
TRANSFER SIGNATURE

\_\_\_\_\_  
PRINTED NAME

\_\_\_\_\_  
DATE/TIME



VISTA ENVIRONMENTAL  
CONSULTING

ASBESTOS BULK SAMPLE LOG

2984 TEAGARDEN STREET  
SAN LEANDRO, CA 94577

OFFICE 510.346.8860  
FAX 888.653.8889

CLIENT: PARC

DATE: 01/27/26

LOCATION: 824 4th St., Orland

PROJECT NUMBER: 250036001

SAMPLED BY: CB

CAC OR SST No: 92-0224

BUILDING	HOMO AREA ID	NUMBER	MATERIAL	DESCRIPTION	LOCATION	QUANTITY (SF/LF/EA)
824	C	01	PAINT/PAPER	WHITE/WHITE	WALLS & CURVED COLUMNS	
824	C	02	↓	↓	↓	
824	C	03	↓	↓	↓	
824	D	01	VFT/MAS	12"BUCK/YELLOW		
824	D	02	↓	↓		
824	E	01	VFT/MAS	12" GRAY/YELLOW		
824	E	02	↓	↓		
824	F	01	BASECOAT/MAS	4"BUCK/YELLOW		
824	F	02	↓	↓		
824	G	01	VSP/MAS	GRAY, SPECKLED/BEGE		

ANALYTICAL METHOD: PLM 400 PT COUNT TURNAROUND TIME: SAME DAY 24HR 48 HR 3 DAY

DATA SENT TO: Christopher Burns Via E-Mail: [chrisburns@vista-env.com](mailto:chrisburns@vista-env.com) ; [nocaladmin@vista-env.com](mailto:nocaladmin@vista-env.com)  
Questions call: Office\_510.346.8860 Cell\_925.348.5361

SPECIAL INSTRUCTIONS:

CHAIN OF CUSTODY:

1. [Signature] LUIS S. ROCHA 01/27/26 - 0900  
TRANSFER SIGNATURE PRINTED NAME DATE/TIME

2. [Signature] Shirlysa Tieng 1/30/26 935 FX  
TRANSFER SIGNATURE PRINTED NAME DATE/TIME

3. \_\_\_\_\_ PRINTED NAME DATE/TIME



VISTA ENVIRONMENTAL  
CONSULTING

ASBESTOS BULK SAMPLE LOG

2984 TEAGARDEN STREET  
SAN LEANDRO, CA 94577

OFFICE 510.346.8860  
FAX 888.653.8889

CLIENT: PARC

DATE: 01/27/26

LOCATION: 824 4th St., Orland

PROJECT NUMBER: 250036001

SAMPLED BY: CB

CAC OR SST No: 92-0224

BUILDING	HOMO AREA ID	NUMBER	MATERIAL	DESCRIPTION	LOCATION	QUANTITY (SF/LF/EA)
824	G	02	↓	↓		
824	H	01	ACP	2'X4' WHITE, FIBROUS		
824	H	02	↓	↓		
824	I	01	ACP	2'X4' WHITE, SOLID		
<del>824</del>	<del>I</del>	<del>02</del>	<del>↓</del>	<del>↓</del>		
824	J	01	MASTIC	YELLOW	FPP PANELS	
824	J	02	↓	↓	↓	
824	K	01	ACT	1'X2' WHITE	TACKED ON	
824	K	02	↓	↓	↓	
824	L	01	VSF/BACK	BEIGE FALK STONE / GRAY		

ANALYTICAL METHOD: PLM 400 PT COUNT TURNAROUND TIME: SAME DAY 24HR 48 HR 3 DAY

DATA SENT TO: Christopher Burns Via E-Mail: [chrisburns@vista-env.com](mailto:chrisburns@vista-env.com) ; [nocaladmin@vista-env.com](mailto:nocaladmin@vista-env.com)  
Questions call: Office\_510.346.8860 Cell\_925.348.5361

SPECIAL INSTRUCTIONS: \_\_\_\_\_

CHAIN OF CUSTODY:

1. [Signature]  
TRANSFER SIGNATURE

LUIS S. ROCHA  
PRINTED NAME

01/27/26-0900  
DATE/TIME

2. [Signature]  
TRANSFER SIGNATURE

Shirlysa Tieng  
PRINTED NAME

1/30/26 935 Fx  
DATE/TIME

3. \_\_\_\_\_  
TRANSFER SIGNATURE

\_\_\_\_\_  
PRINTED NAME

\_\_\_\_\_  
DATE/TIME



VISTA ENVIRONMENTAL  
CONSULTING

ASBESTOS BULK SAMPLE LOG

2984 TEAGARDEN STREET  
SAN LEANDRO, CA 94577

OFFICE 510.346.8860  
FAX 888.653.8889

CLIENT: PARC

DATE: 01/27/26

LOCATION: 824 4th St., Orland

PROJECT NUMBER: 250036001

SAMPLED BY: CB

CAC OR SST No: 92-0224

BUILDING	HOMO AREA ID	NUMBER	MATERIAL	DESCRIPTION	LOCATION	QUANTITY (SF/LF/EA)
824	L	02	↓	↓		
824	M	01	VSP/MAS	BLUE/YELLOW		
824	M	02	↓	↓		
824	N	01	VFT/MAS	12" BEIGE/YELLOW		
824	N	02	↓	↓		
824	O	01	WB/DC	WHITE/WHITE	UNFINISHED	
824	O	02	↓	↓	↓	
824	P	01	MAS/LEVEL COMPOUND	YELLOW/WHITE	CARPET	
824	P	02	↓	↓	↓	
824	Q	01	PATCH	DARK GRAY	CONCRETE WALL	

ANALYTICAL METHOD: PLM 400 PT COUNT TURNAROUND TIME: SAME DAY 24HR 48 HR 3 DAY

DATA SENT TO: Christopher Burns Via E-Mail: [chrisburns@vista-env.com](mailto:chrisburns@vista-env.com) ; [nocaladmin@vista-env.com](mailto:nocaladmin@vista-env.com)  
Questions call: Office\_510.346.8860 Cell\_925.348.5361

SPECIAL INSTRUCTIONS: \_\_\_\_\_

CHAIN OF CUSTODY:

1. [Signature] TRANSFER SIGNATURE      LUIS D. BOCHA PRINTED NAME      01/27/26 - 0900 DATE/TIME
2. [Signature] TRANSFER SIGNATURE      Shirlusa Tieng PRINTED NAME      1/30/26 935 FX DATE/TIME
3. \_\_\_\_\_ TRANSFER SIGNATURE      \_\_\_\_\_ PRINTED NAME      \_\_\_\_\_ DATE/TIME



VISTA ENVIRONMENTAL  
CONSULTING

ASBESTOS BULK SAMPLE LOG

2984 TEAGARDEN STREET  
SAN LEANDRO, CA 94577

OFFICE 510.346.8860  
FAX 888.653.8889

CLIENT: PARC

DATE: 01/27/26

LOCATION: 824 4th St., Orland

PROJECT NUMBER: 250036001

SAMPLED BY: CB

CAC OR SST No: 92-0224

BUILDING	HOMO AREA ID	NUMBER	MATERIAL	DESCRIPTION	LOCATION	QUANTITY (SF/LF/EA)
824	R	01	LATHE	WHITE	BUTTON BOARD W.F.C	
824	R	02	↓	↓	↓	
824	S	01	SAAC	WHITE	CEILING	
824	S	02	↓	↓	↓	
824	S	03	↓	↓	↓	
824	T	01	PAINT/STUCCO	RED/GRAY	WALLS & CEILING	
824	T	02	↓	↓	↓	
824	T	03	↓	↓	↓	
824	T	04	↓	↓	↓	
824	T	05	↓	↓	↓	

ANALYTICAL METHOD: PLM 400 PT COUNT TURNAROUND TIME: SAME DAY 24HR 48 HR 3 DAY

DATA SENT TO: Christopher Burns Via E-Mail: [chrisburns@vista-env.com](mailto:chrisburns@vista-env.com) ; [nocaladmin@vista-env.com](mailto:nocaladmin@vista-env.com)  
Questions call: Office\_510.346.8860 Cell\_925.348.5361

SPECIAL INSTRUCTIONS:

CHAIN OF CUSTODY:

1. [Signature] LUIS S. ROCHA 01/27/26-0900  
TRANSFER SIGNATURE PRINTED NAME DATE/TIME

2. [Signature] Shirlusa Tieng 1/30/26 935 FX  
TRANSFER SIGNATURE PRINTED NAME DATE/TIME

3. \_\_\_\_\_ PRINTED NAME DATE/TIME



VISTA ENVIRONMENTAL  
CONSULTING

ASBESTOS BULK SAMPLE LOG

2984 TEAGARDEN STREET  
SAN LEANDRO, CA 94577

OFFICE 510.346.8860  
FAX 888.653.8889

CLIENT: PARC

DATE: 01/27/26

LOCATION: 824 4th St., Orland

PROJECT NUMBER: 250036001

SAMPLED BY: CB

CAC OR SST No: 92-0224

BUILDING	HOMO AREA ID	NUMBER	MATERIAL	DESCRIPTION	LOCATION	QUANTITY (SF/LF/EA)
824	U	01	LATHE	WHITE	BEHIND STUCCO	
824	U	02	↓	↓	↓	
824	W	01	PAINT/CONCRETE	BEIGE/GRAY	WALLS	
824	W	02	↓	↓	↓	
824	X	01	SEALANT	BLACK & GRAY	METAL FLASHING	
824	X	02	↓	↓	↓	
824	Y	01	CONCRETE	GRAY	WALKWAY	
824	Y	02	↓	↓	↓	
824	Z	01	CONCRETE	GRAY	DRIVEWAY	
824	Z	02	↓	↓	↓	

ANALYTICAL METHOD: PLM 400 PT COUNT TURNAROUND TIME: SAME DAY 24HR 48HR 3 DAY

DATA SENT TO: Christopher Burns Via E-Mail: [chrisburns@vista-env.com](mailto:chrisburns@vista-env.com) ; [nocaladmin@vista-env.com](mailto:nocaladmin@vista-env.com)  
Questions call: Office\_510.346.8860 Cell\_925.348.5361

SPECIAL INSTRUCTIONS: LETTER "V" NOT USED

CHAIN OF CUSTODY:

1. [Signature] LUIS S. ROCHA 01/27/26-0900  
TRANSFER SIGNATURE PRINTED NAME DATE/TIME

2. [Signature] Shirlysa Tieng 1/30/26 935 FX  
TRANSFER SIGNATURE PRINTED NAME DATE/TIME

3. \_\_\_\_\_  
TRANSFER SIGNATURE PRINTED NAME DATE/TIME



VISTA ENVIRONMENTAL  
CONSULTING

ASBESTOS BULK SAMPLE LOG

2984 TEAGARDEN STREET  
SAN LEANDRO, CA 94577

OFFICE 510.346.8860  
FAX 888.653.8889

CLIENT: PARC

DATE: 01/27/26

LOCATION: 824 4th St., Orland

PROJECT NUMBER: 250036001

SAMPLED BY: CB

CAC OR SST No: 92-0224

BUILDING	HOMO AREA ID	NUMBER	MATERIAL	DESCRIPTION	LOCATION	QUANTITY (SF/LF/EA)
824	AA	01	CONCRETE	GRAY	FOUNDATION	
824	AA	02	↓	↓	↓	
824	BB	01	SEALANT	WHITE	ALUMINUM WINDOW FRAMES	
824	BB	02	↓	↓	↓	
824	CC	01	PUTTY	WHITE	METAL WINDOWS	
824	CC	02	↓	↓	↓	
824	EE	01	CONCRETE	GRAY	PARKING LOT PATCHES	
824	EE	02	↓	↓	↓	
824	FF	01	SEALANT	WHITE	WALL SEAMS	
824	GG	01	PAINT/PLASTER	WHITE/GRAY	W&C	

ANALYTICAL METHOD: PLM 400 PT COUNT      TURNAROUND TIME: SAME DAY 24HR 48 HR 3 DAY

DATA SENT TO: Christopher Burns Via E-Mail: [chrisburns@vista-env.com](mailto:chrisburns@vista-env.com) ; [nocaladmin@vista-env.com](mailto:nocaladmin@vista-env.com)  
Questions call: Office 510.346.8860 Cell 925.348.5361

SPECIAL INSTRUCTIONS: LETTER "DD" ASSUMED

CHAIN OF CUSTODY:

1. [Signature]      LUIS J. ROCHA      01/27/26 - 0900  
TRANSFER SIGNATURE      PRINTED NAME      DATE/TIME
2. [Signature]      Shirlysa Tieng      1/30/26 935 FX  
TRANSFER SIGNATURE      PRINTED NAME      DATE/TIME
3. \_\_\_\_\_      \_\_\_\_\_      \_\_\_\_\_  
TRANSFER SIGNATURE      PRINTED NAME      DATE/TIME



VISTA ENVIRONMENTAL  
CONSULTING

ASBESTOS BULK SAMPLE LOG

2984 TEAGARDEN STREET  
SAN LEANDRO, CA 94577

OFFICE 510.346.8860  
FAX 888.653.8889

CLIENT: PARC

DATE: 01/27/26

LOCATION: 824 4th St., Orland

PROJECT NUMBER: 250036001

SAMPLED BY: CB

CAC OR SST No: 92-0224

BUILDING	HOMO AREA ID	NUMBER	MATERIAL	DESCRIPTION	LOCATION	QUANTITY (SF/LF/EA)
824	GG	02	↓	↓	↓	
824	GG	03	↓	↓	↓	
824	HH	01	SEALANT	WHITE	METAL ROOF RIVETS	
824	II	01	MASTIC	SILVER & GRAY	METAL ROOF RIVETS	
824	JJ	01	MASTIC/PELT	GRAY BLACK/BLACK	FLASHING	
824	JJ	02	↓	↓	↓	
824	KK	01	INSULATION	BROWN	FIRE DOOR	
<del>770 SAMPLES</del>						

ANALYTICAL METHOD: PLM 400 PT COUNT    TURNAROUND TIME: SAME DAY 24HR 48 HR 3 DAY

DATA SENT TO: Christopher Burns Via E-Mail: [chrisburns@vista-env.com](mailto:chrisburns@vista-env.com) ; [nocaladmin@vista-env.com](mailto:nocaladmin@vista-env.com)  
Questions call: Office\_510.346.8860 Cell\_925.348.5361

SPECIAL INSTRUCTIONS: \_\_\_\_\_

CHAIN OF CUSTODY:

- [Signature]      LUIS J. ROCHA      01/27/26 - 0900  
TRANSFER SIGNATURE      PRINTED NAME      DATE/TIME
- [Signature]      Shirlyca Tieng      1/30/26 935 FX  
TRANSFER SIGNATURE      PRINTED NAME      DATE/TIME
- \_\_\_\_\_  
TRANSFER SIGNATURE      PRINTED NAME      DATE/TIME



VISTA ENVIRONMENTAL  
CONSULTING

ASBESTOS BULK SAMPLE LOG

2984 TEAGARDEN STREET  
SAN LEANDRO, CA 94577

OFFICE 510.346.8860  
FAX 888.653.8889

CLIENT: PARC

DATE: 01/27/26

LOCATION: 824 4th St., Orland

PROJECT NUMBER: 250036001

SAMPLED BY: CB

CAC OR SST No: 92-0224

BUILDING	HOMO AREA ID	NUMBER	MATERIAL	DESCRIPTION	LOCATION	QUANTITY (SF/LF/EA)
824	A	01	WB/SC	WHITE/WHITE	WITH TEXTURE	
824	A	02	↓	↓	↓	
824	A	03	↓	↓	↓	
824	B	01	TEXTURE COAT	WHITE, SMALL	WALLS	
824	B	02	↓	↓	↓	
824	B	03	↓	↓	↓	
824	B	04	↓	↓	↓	
824	B	05	↓	↓	↓	
824	B	06	↓	↓	↓	
824	B	07	↓	↓	↓	

ANALYTICAL METHOD: PLM 400 PT COUNT      TURNAROUND TIME: SAME DAY 24HR 48 HR 3 DAY

DATA SENT TO: Christopher Burns Via E-Mail: [chrisburns@vista-env.com](mailto:chrisburns@vista-env.com) ; [nocaladmin@vista-env.com](mailto:nocaladmin@vista-env.com)  
Questions call: Office\_510.346.8860 Cell\_925.348.5361

SPECIAL INSTRUCTIONS:

CHAIN OF CUSTODY:

1. [Signature]  
TRANSFER SIGNATURE

MUSJ. Rocha  
PRINTED NAME

01/27/26 - 0900  
DATE/TIME

Received

2. [Signature]  
TRANSFER SIGNATURE

Shirlysa Tieng  
PRINTED NAME

1/30/26 935 FX  
DATE/TIME

3. \_\_\_\_\_  
TRANSFER SIGNATURE

\_\_\_\_\_  
PRINTED NAME

\_\_\_\_\_  
DATE/TIME



VISTA ENVIRONMENTAL  
CONSULTING

ASBESTOS BULK SAMPLE LOG

2984 TEAGARDEN STREET  
SAN LEANDRO, CA 94577

OFFICE 510.346.8860  
FAX 888.653.8889

CLIENT: PARC

DATE: 01/27/26

LOCATION: 824 4th St., Orland

PROJECT NUMBER: 250036001

SAMPLED BY: CB

CAC OR SST No: 92-0224

BUILDING	HOMO AREA ID	NUMBER	MATERIAL	DESCRIPTION	LOCATION	QUANTITY (SF/LF/EA)
824	C	01	PAINT/PAPER	WHITE/WHITE	WALLS & CURVED COLUMNS	
824	C	02	↓	↓	↓	
824	C	03	↓	↓	↓	
824	D	01	VFT/MAS	12"BUCK/YELLOW		
824	D	02	↓	↓		
824	E	01	VFT/MAS	12" GRAY/YELLOW		
824	E	02	↓	↓		
824	F	01	BASECOAT/MAS	4"BUCK/YELLOW		
824	F	02	↓	↓		
824	G	01	VSP/MAS	GRAY, SPECKLED	BEIGE	

ANALYTICAL METHOD: PLM 400 PT COUNT TURNAROUND TIME: SAME DAY 24HR 48 HR 3 DAY

DATA SENT TO: Christopher Burns Via E-Mail: [chrisburns@vista-env.com](mailto:chrisburns@vista-env.com) ; [nocaladmin@vista-env.com](mailto:nocaladmin@vista-env.com)  
Questions call: Office\_510.346.8860 Cell\_925.348.5361

SPECIAL INSTRUCTIONS: \_\_\_\_\_

CHAIN OF CUSTODY:

1. [Signature] LUIS S. ROCHA 01/27/26 - 0900  
TRANSFER SIGNATURE PRINTED NAME DATE/TIME

2. [Signature] Shirlysa Tieng 1/30/26 935 FX  
TRANSFER SIGNATURE PRINTED NAME DATE/TIME

3. \_\_\_\_\_  
TRANSFER SIGNATURE PRINTED NAME DATE/TIME



VISTA ENVIRONMENTAL  
CONSULTING

ASBESTOS BULK SAMPLE LOG

2984 TEAGARDEN STREET  
SAN LEANDRO, CA 94577

OFFICE 510.346.8860  
FAX 888.653.8889

CLIENT: PARC

DATE: 01/27/26

LOCATION: 824 4th St., Orland

PROJECT NUMBER: 250036001

SAMPLED BY: CB

CAC OR SST No: 92-0224

BUILDING	HOMO AREA ID	NUMBER	MATERIAL	DESCRIPTION	LOCATION	QUANTITY (SF/LF/EA)
824	G	02	↓	↓		
824	H	01	ACP	2'X4' WHITE, FIBROUS		
824	H	02	↓	↓		
824	I	01	ACP	2'X4' WHITE, SOLID		
<del>824</del>	<del>I</del>	<del>02</del>	<del>↓</del>	<del>↓</del>		
824	J	01	MASTIC	YELLOW	FPP PANELS	
824	J	02	↓	↓	↓	
824	K	01	ACT	1'X2' WHITE	TACKED ON	
824	K	02	↓	↓	↓	
824	L	01	VSF/BACK	BEIGE FALK STONE / GRAY		

ANALYTICAL METHOD: PLM 400 PT COUNT TURNAROUND TIME: SAME DAY 24HR 48 HR 3 DAY

DATA SENT TO: Christopher Burns Via E-Mail: [chrisburns@vista-env.com](mailto:chrisburns@vista-env.com) ; [nocaladmin@vista-env.com](mailto:nocaladmin@vista-env.com)  
Questions call: Office\_510.346.8860 Cell\_925.348.5361

SPECIAL INSTRUCTIONS: \_\_\_\_\_

CHAIN OF CUSTODY:

1. [Signature]  
TRANSFER SIGNATURE

LUIS S. ROCHA  
PRINTED NAME

01/27/26-0900  
DATE/TIME

2. [Signature]  
TRANSFER SIGNATURE

Shirlysa Tieng  
PRINTED NAME

1/30/26 935 Fx  
DATE/TIME

3. \_\_\_\_\_  
TRANSFER SIGNATURE

\_\_\_\_\_  
PRINTED NAME

\_\_\_\_\_  
DATE/TIME



VISTA ENVIRONMENTAL  
CONSULTING

ASBESTOS BULK SAMPLE LOG

2984 TEAGARDEN STREET  
SAN LEANDRO, CA 94577

OFFICE 510.346.8860  
FAX 888.653.8889

CLIENT: PARC

DATE: 01/27/26

LOCATION: 824 4th St., Orland

PROJECT NUMBER: 250036001

SAMPLED BY: CB

CAC OR SST No: 92-0224

BUILDING	HOMO AREA ID	NUMBER	MATERIAL	DESCRIPTION	LOCATION	QUANTITY (SF/LF/EA)
824	L	02	↓	↓		
824	M	01	VSP/MAS	BLUE/YELLOW		
824	M	02	↓	↓		
824	N	01	VFT/MAS	12" BEIGE/YELLOW		
824	N	02	↓	↓		
824	O	01	WB/DC	WHITE/WHITE	UNFINISHED	
824	O	02	↓	↓	↓	
824	P	01	MAS/LEVEL COMPOUND	YELLOW/WHITE	CARPET	
824	P	02	↓	↓	↓	
824	Q	01	PATCH	DARK GRAY	CONCRETE WALL	

ANALYTICAL METHOD: PLM 400 PT COUNT TURNAROUND TIME: SAME DAY 24HR 48 HR 3 DAY

DATA SENT TO: Christopher Burns Via E-Mail: [chrisburns@vista-env.com](mailto:chrisburns@vista-env.com) ; [nocaladmin@vista-env.com](mailto:nocaladmin@vista-env.com)  
Questions call: Office\_510.346.8860 Cell\_925.348.5361

SPECIAL INSTRUCTIONS: \_\_\_\_\_

CHAIN OF CUSTODY:

1. [Signature] TRANSFER SIGNATURE LUIS D. BOCHA PRINTED NAME 01/27/26 - 0900 DATE/TIME

2. [Signature] TRANSFER SIGNATURE Shirlusa Tieng PRINTED NAME 1/30/26 935 FX DATE/TIME

3. \_\_\_\_\_ TRANSFER SIGNATURE \_\_\_\_\_ PRINTED NAME \_\_\_\_\_ DATE/TIME



VISTA ENVIRONMENTAL  
CONSULTING

ASBESTOS BULK SAMPLE LOG

2984 TEAGARDEN STREET  
SAN LEANDRO, CA 94577

OFFICE 510.346.8860  
FAX 888.653.8889

CLIENT: PARC

DATE: 01/27/26

LOCATION: 824 4th St., Orland

PROJECT NUMBER: 250036001

SAMPLED BY: CB

CAC OR SST No: 92-0224

BUILDING	HOMO AREA ID	NUMBER	MATERIAL	DESCRIPTION	LOCATION	QUANTITY (SF/LF/EA)
824	R	01	LATHE	WHITE	BUTTON BOARD W.F.C	
824	R	02	↓	↓	↓	
824	S	01	SAAC	WHITE	CEILING	
824	S	02	↓	↓	↓	
824	S	03	↓	↓	↓	
824	T	01	PAINT/STUCCO	RED/GRAY	WALLS & EAVES	
824	T	02	↓	↓	↓	
824	T	03	↓	↓	↓	
824	T	04	↓	↓	↓	
824	T	05	↓	↓	↓	

ANALYTICAL METHOD: PLM 400 PT COUNT TURNAROUND TIME: SAME DAY 24HR 48 HR 3 DAY

DATA SENT TO: Christopher Burns Via E-Mail: [chrisburns@vista-env.com](mailto:chrisburns@vista-env.com) ; [nocaladmin@vista-env.com](mailto:nocaladmin@vista-env.com)  
Questions call: Office\_510.346.8860 Cell\_925.348.5361

SPECIAL INSTRUCTIONS:

CHAIN OF CUSTODY:

1. [Signature] LUIS S. ROCHA 01/27/26-0900  
TRANSFER SIGNATURE PRINTED NAME DATE/TIME

2. [Signature] Shirlusa Tieng 1/30/26 935 FX  
TRANSFER SIGNATURE PRINTED NAME DATE/TIME

3. \_\_\_\_\_ PRINTED NAME DATE/TIME



VISTA ENVIRONMENTAL  
CONSULTING

ASBESTOS BULK SAMPLE LOG

2984 TEAGARDEN STREET  
SAN LEANDRO, CA 94577

OFFICE 510.346.8860  
FAX 888.653.8889

CLIENT: PARC

DATE: 01/27/26

LOCATION: 824 4th St., Orland

PROJECT NUMBER: 250036001

SAMPLED BY: CB

CAC OR SST No: 92-0224

BUILDING	HOMO AREA ID	NUMBER	MATERIAL	DESCRIPTION	LOCATION	QUANTITY (SF/LF/EA)
824	U	01	LATHE	WHITE	BEHIND STUCCO	
824	U	02	↓	↓	↓	
824	W	01	PAINT/CONCRETE	BEIGE/GRAY	WALLS	
824	W	02	↓	↓	↓	
824	X	01	SEALANT	BLACK & GRAY	METAL FLASHING	
824	X	02	↓	↓	↓	
824	Y	01	CONCRETE	GRAY	WALKWAY	
824	Y	02	↓	↓	↓	
824	Z	01	CONCRETE	GRAY	DRIVEWAY	
824	Z	02	↓	↓	↓	

ANALYTICAL METHOD: PLM 400 PT COUNT TURNAROUND TIME: SAME DAY 24HR 48HR 3 DAY

DATA SENT TO: Christopher Burns Via E-Mail: [chrisburns@vista-env.com](mailto:chrisburns@vista-env.com) ; [nocaladmin@vista-env.com](mailto:nocaladmin@vista-env.com)  
Questions call: Office\_510.346.8860 Cell\_925.348.5361

SPECIAL INSTRUCTIONS: LETTER "V" NOT USED

CHAIN OF CUSTODY:

1. [Signature] LUIS S. ROCHA 01/27/26-0900  
TRANSFER SIGNATURE PRINTED NAME DATE/TIME

2. [Signature] Shirlysa Tieng 1/30/26 935 PX  
TRANSFER SIGNATURE PRINTED NAME DATE/TIME

3. \_\_\_\_\_ PRINTED NAME DATE/TIME  
TRANSFER SIGNATURE



VISTA ENVIRONMENTAL  
CONSULTING

ASBESTOS BULK SAMPLE LOG

2984 TEAGARDEN STREET  
SAN LEANDRO, CA 94577

OFFICE 510.346.8860  
FAX 888.653.8889

CLIENT: PARC

DATE: 01/27/26

LOCATION: 824 4th St., Orland

PROJECT NUMBER: 250036001

SAMPLED BY: CB

CAC OR SST No: 92-0224

BUILDING	HOMO AREA ID	NUMBER	MATERIAL	DESCRIPTION	LOCATION	QUANTITY (SF/LF/EA)
824	AA	01	CONCRETE	GRAY	FOUNDATION	
824	AA	02	↓	↓	↓	
824	BB	01	SEALANT	WHITE	ALUMINUM WINDOW FRAMES	
824	BB	02	↓	↓	↓	
824	CC	01	PUTTY	WHITE	METAL WINDOWS	
824	CC	02	↓	↓	↓	
824	EE	01	CONCRETE	GRAY	PARKING LOT PATCHES	
824	EE	02	↓	↓	↓	
824	FF	01	SEALANT	WHITE	WALL SEAMS	
824	GG	01	PAINT/PLASTER	WHITE/GRAY	W&C	

ANALYTICAL METHOD: PLM 400 PT COUNT      TURNAROUND TIME: SAME DAY 24HR 48 HR 3 DAY

DATA SENT TO: Christopher Burns Via E-Mail: [chrisburns@vista-env.com](mailto:chrisburns@vista-env.com) ; [nocaladmin@vista-env.com](mailto:nocaladmin@vista-env.com)  
Questions call: Office 510.346.8860 Cell 925.348.5361

SPECIAL INSTRUCTIONS: LETTER "DD" ASSUMED

CHAIN OF CUSTODY:

1. [Signature]      LUIS J. ROCHA      01/27/26 - 0900  
TRANSFER SIGNATURE      PRINTED NAME      DATE/TIME
2. [Signature]      Shirlysa Tieng      1/30/26 935 FX  
TRANSFER SIGNATURE      PRINTED NAME      DATE/TIME
3. \_\_\_\_\_      \_\_\_\_\_      \_\_\_\_\_  
TRANSFER SIGNATURE      PRINTED NAME      DATE/TIME



VISTA ENVIRONMENTAL  
CONSULTING

ASBESTOS BULK SAMPLE LOG

2984 TEAGARDEN STREET  
SAN LEANDRO, CA 94577

OFFICE 510.346.8860  
FAX 888.653.8889

CLIENT: PARC

DATE: 01/27/26

LOCATION: 824 4th St., Orland

PROJECT NUMBER: 250036001

SAMPLED BY: CB

CAC OR SST No: 92-0224

BUILDING	HOMO AREA ID	NUMBER	MATERIAL	DESCRIPTION	LOCATION	QUANTITY (SF/LF/EA)
824	GG	02	↓	↓	↓	
824	GG	03	↓	↓	↓	
824	HH	01	SEALANT	WHITE	METAL ROOF RIVETS	
824	II	01	MASTIC	SILVER & GRAY	METAL ROOF RIVETS	
824	JJ	01	MASTIC/PELT	GRAY BLACK/BLACK	FLASHING	
824	JJ	02	↓	↓	↓	
824	KK	01	INSULATION	BROWN	FIRE DOOR	
<b>770 SAMPLES</b>						

ANALYTICAL METHOD: PLM 400 PT COUNT    TURNAROUND TIME: SAME DAY 24HR 48 HR 3 DAY

DATA SENT TO: Christopher Burns Via E-Mail: [chrisburns@vista-env.com](mailto:chrisburns@vista-env.com) ; [nocaladmin@vista-env.com](mailto:nocaladmin@vista-env.com)  
Questions call: Office\_510.346.8860 Cell\_925.348.5361

SPECIAL INSTRUCTIONS: \_\_\_\_\_

CHAIN OF CUSTODY:

1. [Signature]    LUIS J. ROCHA    01/27/26 - 0900  
TRANSFER SIGNATURE    PRINTED NAME    DATE/TIME
2. [Signature]    Shirlyca Tieng    1/30/26 935 FX  
TRANSFER SIGNATURE    PRINTED NAME    DATE/TIME
3. \_\_\_\_\_    \_\_\_\_\_    \_\_\_\_\_  
TRANSFER SIGNATURE    PRINTED NAME    DATE/TIME



VISTA ENVIRONMENTAL  
CONSULTING

ASBESTOS BULK SAMPLE LOG

2984 TEAGARDEN STREET  
SAN LEANDRO, CA 94577

OFFICE 510.346.8860  
FAX 888.653.8889

CLIENT: PARC

DATE: 01/27/26

LOCATION: 824 4th St., Orland

PROJECT NUMBER: 250036001

SAMPLED BY: CB

CAC OR SST No: 92-0224

BUILDING	HOMO AREA ID	NUMBER	MATERIAL	DESCRIPTION	LOCATION	QUANTITY (SF/LF/EA)
824	A	01	WB/SC	WHITE/WHITE	WITH TEXTURE	
824	A	02				
824	A	03				
824	B	01	TEXTURE COAT	WHITE, SMALL	WALLS	
824	B	02				
824	B	03				
824	B	04				
824	B	05				
824	B	06				
824	B	07				

ANALYTICAL METHOD: PLM 400 PT COUNT      TURNAROUND TIME: SAME DAY 24HR 48 HR 3 DAY

DATA SENT TO: Christopher Burns Via E-Mail: [chrisburns@vista-env.com](mailto:chrisburns@vista-env.com) ; [nocaladmin@vista-env.com](mailto:nocaladmin@vista-env.com)  
Questions call: Office\_510.346.8860 Cell\_925.348.5361

SPECIAL INSTRUCTIONS:

CHAIN OF CUSTODY:

1. [Signature]  
TRANSFER SIGNATURE

MUSJ. ROCHA  
PRINTED NAME

01/27/26 - 0900  
DATE/TIME

Received

2. [Signature]  
TRANSFER SIGNATURE

Shirlysa Tieng  
PRINTED NAME

1/30/26 935 FX  
DATE/TIME

3. \_\_\_\_\_  
TRANSFER SIGNATURE

\_\_\_\_\_  
PRINTED NAME

\_\_\_\_\_  
DATE/TIME



VISTA ENVIRONMENTAL  
CONSULTING

ASBESTOS BULK SAMPLE LOG

2984 TEAGARDEN STREET  
SAN LEANDRO, CA 94577

OFFICE 510.346.8860  
FAX 888.653.8889

CLIENT: PARC

DATE: 01/27/26

LOCATION: 824 4th St., Orland

PROJECT NUMBER: 250036001

SAMPLED BY: CB

CAC OR SST No: 92-0224

BUILDING	HOMO AREA ID	NUMBER	MATERIAL	DESCRIPTION	LOCATION	QUANTITY (SF/LF/EA)
824	C	01	PAINT/PAPER	WHITE/WHITE	WALLS & CURVED COLUMNS	
824	C	02	↓	↓	↓	
824	C	03	↓	↓	↓	
824	D	01	VFT/MAS	12"BUCK/YELLOW		
824	D	02	↓	↓		
824	E	01	VFT/MAS	12" GRAY/YELLOW		
824	E	02	↓	↓		
824	F	01	BASECOAT/MAS	4"BUCK/YELLOW		
824	F	02	↓	↓		
824	G	01	VSP/MAS	GRAY, SPECKLED/BEGE		

ANALYTICAL METHOD: PLM 400 PT COUNT TURNAROUND TIME: SAME DAY 24HR 48 HR 3 DAY

DATA SENT TO:

Christopher Burns Via E-Mail: [chrisburns@vista-env.com](mailto:chrisburns@vista-env.com) ; [nocaladmin@vista-env.com](mailto:nocaladmin@vista-env.com)  
Questions call: Office\_510.346.8860 Cell\_925.348.5361

SPECIAL INSTRUCTIONS:

CHAIN OF CUSTODY:

1. [Signature] LUIS S. ROCHA 01/27/26 - 0900  
TRANSFER SIGNATURE PRINTED NAME DATE/TIME

2. [Signature] Shirlysa Tieng 1/30/26 935 FX  
TRANSFER SIGNATURE PRINTED NAME DATE/TIME

3. \_\_\_\_\_  
TRANSFER SIGNATURE PRINTED NAME DATE/TIME

PAGE 2 OF 8



VISTA ENVIRONMENTAL  
CONSULTING

ASBESTOS BULK SAMPLE LOG

2984 TEAGARDEN STREET  
SAN LEANDRO, CA 94577

OFFICE 510.346.8860  
FAX 888.653.8889

CLIENT: PARC

DATE: 01/27/26

LOCATION: 824 4th St., Orland

PROJECT NUMBER: 250036001

SAMPLED BY: CB

CAC OR SST No: 92-0224

BUILDING	HOMO AREA ID	NUMBER	MATERIAL	DESCRIPTION	LOCATION	QUANTITY (SF/LF/EA)
824	G	02	↓	↓		
824	H	01	ACP	2'X4' WHITE, FIBROUS		
824	H	02	↓	↓		
824	I	01	ACP	2'X4' WHITE, SOLID		
<del>824</del>	<del>I</del>	<del>02</del>	<del>↓</del>	<del>↓</del>		
824	J	01	MASTIC	YELLOW	FPP PANELS	
824	J	02	↓	↓	↓	
824	K	01	ACT	1'X2' WHITE	TACKED ON	
824	K	02	↓	↓	↓	
824	L	01	VSF/BACK	BEIGE FALK STONE / GRAY		

ANALYTICAL METHOD: PLM 400 PT COUNT TURNAROUND TIME: SAME DAY 24HR 48 HR 3 DAY

DATA SENT TO: Christopher Burns Via E-Mail: [chrisburns@vista-env.com](mailto:chrisburns@vista-env.com) ; [nocaladmin@vista-env.com](mailto:nocaladmin@vista-env.com)  
Questions call: Office\_510.346.8860 Cell\_925.348.5361

SPECIAL INSTRUCTIONS: \_\_\_\_\_

CHAIN OF CUSTODY:

1. [Signature]  
TRANSFER SIGNATURE

LUIS S. ROCHA  
PRINTED NAME

01/27/26-0900  
DATE/TIME

2. [Signature]  
TRANSFER SIGNATURE

Shirlysa Tieng  
PRINTED NAME

1/30/26 935 Fx  
DATE/TIME

3. \_\_\_\_\_  
TRANSFER SIGNATURE

\_\_\_\_\_  
PRINTED NAME

\_\_\_\_\_  
DATE/TIME



VISTA ENVIRONMENTAL  
CONSULTING

ASBESTOS BULK SAMPLE LOG

2984 TEAGARDEN STREET  
SAN LEANDRO, CA 94577

OFFICE 510.346.8860  
FAX 888.653.8889

CLIENT: PARC

DATE: 01/27/26

LOCATION: 824 4th St., Orland

PROJECT NUMBER: 250036001

SAMPLED BY: CB

CAC OR SST No: 92-0224

BUILDING	HOMO AREA ID	NUMBER	MATERIAL	DESCRIPTION	LOCATION	QUANTITY (SF/LF/EA)
824	L	02	↓	↓		
824	M	01	VSP/MAS	BLUE/YELLOW		
824	M	02	↓	↓		
824	N	01	VFT/MAS	12" BEIGE/YELLOW		
824	N	02	↓	↓		
824	O	01	WB/DC	WHITE/WHITE	UNFINISHED	
824	O	02	↓	↓	↓	
824	P	01	MAS/LEVEL COMPOUND	YELLOW/WHITE	CARPET	
824	P	02	↓	↓	↓	
824	Q	01	PATCH	DARK GRAY	CONCRETE WALL	

ANALYTICAL METHOD: PLM 400 PT COUNT TURNAROUND TIME: SAME DAY 24HR 48 HR 3 DAY

DATA SENT TO: Christopher Burns Via E-Mail: [chrisburns@vista-env.com](mailto:chrisburns@vista-env.com) ; [nocaladmin@vista-env.com](mailto:nocaladmin@vista-env.com)  
Questions call: Office\_510.346.8860 Cell\_925.348.5361

SPECIAL INSTRUCTIONS: \_\_\_\_\_

CHAIN OF CUSTODY:

1. [Signature] TRANSFER SIGNATURE      LUIS D. BOCHA PRINTED NAME      01/27/26 - 0900 DATE/TIME
2. [Signature] TRANSFER SIGNATURE      Shirlusa Tieng PRINTED NAME      1/30/26 935 FX DATE/TIME
3. \_\_\_\_\_ TRANSFER SIGNATURE      \_\_\_\_\_ PRINTED NAME      \_\_\_\_\_ DATE/TIME



VISTA ENVIRONMENTAL  
CONSULTING

ASBESTOS BULK SAMPLE LOG

2984 TEAGARDEN STREET  
SAN LEANDRO, CA 94577

OFFICE 510.346.8860  
FAX 888.653.8889

CLIENT: PARC

DATE: 01/27/26

LOCATION: 824 4th St., Orland

PROJECT NUMBER: 250036001

SAMPLED BY: CB

CAC OR SST No: 92-0224

BUILDING	HOMO AREA ID	NUMBER	MATERIAL	DESCRIPTION	LOCATION	QUANTITY (SF/LF/EA)
824	R	01	LATHE	WHITE	BUTTON BOARD W.F.C	
824	R	02	↓	↓	↓	
824	S	01	SAAC	WHITE	CEILING	
824	S	02	↓	↓	↓	
824	S	03	↓	↓	↓	
824	T	01	PAINT/STUCCO	RED/GRAY	WALLS & CEILING	
824	T	02	↓	↓	↓	
824	T	03	↓	↓	↓	
824	T	04	↓	↓	↓	
824	T	05	↓	↓	↓	

ANALYTICAL METHOD: PLM 400 PT COUNT TURNAROUND TIME: SAME DAY 24HR 48 HR 3 DAY

DATA SENT TO: Christopher Burns Via E-Mail: [chrisburns@vista-env.com](mailto:chrisburns@vista-env.com) ; [nocaladmin@vista-env.com](mailto:nocaladmin@vista-env.com)  
Questions call: Office\_510.346.8860 Cell\_925.348.5361

SPECIAL INSTRUCTIONS: \_\_\_\_\_

CHAIN OF CUSTODY:

1. [Signature] LUIS S. ROCHA 01/27/26-0900  
TRANSFER SIGNATURE PRINTED NAME DATE/TIME

2. [Signature] Shirlusa Tieng 1/30/26 935 FX  
TRANSFER SIGNATURE PRINTED NAME DATE/TIME

3. \_\_\_\_\_  
TRANSFER SIGNATURE PRINTED NAME DATE/TIME



VISTA ENVIRONMENTAL  
CONSULTING

ASBESTOS BULK SAMPLE LOG

2984 TEAGARDEN STREET  
SAN LEANDRO, CA 94577

OFFICE 510.346.8860  
FAX 888.653.8889

CLIENT: PARC

DATE: 01/27/26

LOCATION: 824 4th St., Orland

PROJECT NUMBER: 250036001

SAMPLED BY: CB

CAC OR SST No: 92-0224

BUILDING	HOMO AREA ID	NUMBER	MATERIAL	DESCRIPTION	LOCATION	QUANTITY (SF/LF/EA)
824	U	01	LATHE	WHITE	BEHIND STUCCO	
824	U	02	↓	↓	↓	
824	W	01	PAINT/CONCRETE	BEIGE/GRAY	WALLS	
824	W	02	↓	↓	↓	
824	X	01	SEALANT	BLACK & GRAY	METAL FLASHING	
824	X	02	↓	↓	↓	
824	Y	01	CONCRETE	GRAY	WALKWAY	
824	Y	02	↓	↓	↓	
824	Z	01	CONCRETE	GRAY	DRIVEWAY	
824	Z	02	↓	↓	↓	

ANALYTICAL METHOD: PLM 400 PT COUNT TURNAROUND TIME: SAME DAY 24HR 48HR 3 DAY

DATA SENT TO: Christopher Burns Via E-Mail: [chrisburns@vista-env.com](mailto:chrisburns@vista-env.com) ; [nocaladmin@vista-env.com](mailto:nocaladmin@vista-env.com)  
Questions call: Office\_510.346.8860 Cell\_925.348.5361

SPECIAL INSTRUCTIONS: LETTER "V" NOT USED

CHAIN OF CUSTODY:

1. [Signature] LUIS S. ROCHA 01/27/26-0900  
TRANSFER SIGNATURE PRINTED NAME DATE/TIME

2. [Signature] Shirlysa Tieng 1/30/26 935 PX  
TRANSFER SIGNATURE PRINTED NAME DATE/TIME

3. \_\_\_\_\_ PRINTED NAME DATE/TIME



VISTA ENVIRONMENTAL  
CONSULTING

ASBESTOS BULK SAMPLE LOG

2984 TEAGARDEN STREET  
SAN LEANDRO, CA 94577

OFFICE 510.346.8860  
FAX 888.653.8889

CLIENT: PARC

DATE: 01/27/26

LOCATION: 824 4th St., Orland

PROJECT NUMBER: 250036001

SAMPLED BY: CB

CAC OR SST No: 92-0224

BUILDING	HOMO AREA ID	NUMBER	MATERIAL	DESCRIPTION	LOCATION	QUANTITY (SF/LF/EA)
824	AA	01	CONCRETE	GRAY	FOUNDATION	
824	AA	02	↓	↓	↓	
824	BB	01	SEALANT	WHITE	ALUMINUM WINDOW FRAMES	
824	BB	02	↓	↓	↓	
824	CC	01	PUTTY	WHITE	METAL WINDOWS	
824	CC	02	↓	↓	↓	
824	EE	01	CONCRETE	GRAY	PARKING LOT PATCHES	
824	EE	02	↓	↓	↓	
824	FF	01	SEALANT	WHITE	WALL SEAMS	
824	GG	01	PAINT/PLASTER	WHITE/GRAY	W&C	

ANALYTICAL METHOD: PLM 400 PT COUNT      TURNAROUND TIME: SAME DAY 24HR 48 HR 3 DAY

DATA SENT TO: Christopher Burns Via E-Mail: [chrisburns@vista-env.com](mailto:chrisburns@vista-env.com) ; [nocaladmin@vista-env.com](mailto:nocaladmin@vista-env.com)  
Questions call: Office 510.346.8860 Cell 925.348.5361

SPECIAL INSTRUCTIONS: LETTER "DD" ASSUMED

CHAIN OF CUSTODY:

1. [Signature]      LUIS J. ROCHA      01/27/26 - 0900  
TRANSFER SIGNATURE      PRINTED NAME      DATE/TIME
2. [Signature]      Shirlysa Tieng      1/30/26 935 FX  
TRANSFER SIGNATURE      PRINTED NAME      DATE/TIME
3. \_\_\_\_\_      \_\_\_\_\_      \_\_\_\_\_  
TRANSFER SIGNATURE      PRINTED NAME      DATE/TIME



VISTA ENVIRONMENTAL  
CONSULTING

ASBESTOS BULK SAMPLE LOG

2984 TEAGARDEN STREET  
SAN LEANDRO, CA 94577

OFFICE 510.346.8860  
FAX 888.653.8889

CLIENT: PARC

DATE: 01/27/26

LOCATION: 824 4th St., Orland

PROJECT NUMBER: 250036001

SAMPLED BY: CB

CAC OR SST No: 92-0224

BUILDING	HOMO AREA ID	NUMBER	MATERIAL	DESCRIPTION	LOCATION	QUANTITY (SF/LF/EA)
824	GG	02	↓	↓	↓	
824	GG	03	↓	↓	↓	
824	HH	01	SEALANT	WHITE	METAL ROOF RIVETS	
824	II	01	MASTIC	SILVER & GRAY	METAL ROOF RIVETS	
824	JJ	01	MASTIC/PELT	GRAY BLACK/BLACK	FLASHING	
824	JJ	02	↓	↓	↓	
824	KK	01	INSULATION	BROWN	FIRE DOOR	
<del>770 SAMPLES</del>						

ANALYTICAL METHOD: PLM 400 PT COUNT      TURNAROUND TIME: SAME DAY 24HR 48 HR 3 DAY

DATA SENT TO:

Christopher Burns Via E-Mail: [chrisburns@vista-env.com](mailto:chrisburns@vista-env.com) ; [nocaladmin@vista-env.com](mailto:nocaladmin@vista-env.com)  
Questions call: Office\_510.346.8860 Cell\_925.348.5361

SPECIAL INSTRUCTIONS: \_\_\_\_\_

CHAIN OF CUSTODY:

- [Signature]      LUIS J. ROCHA      01/27/26 - 0900  
TRANSFER SIGNATURE      PRINTED NAME      DATE/TIME
- [Signature]      Shirlyca Tieng      1/30/26 935 FX  
TRANSFER SIGNATURE      PRINTED NAME      DATE/TIME
- \_\_\_\_\_  
TRANSFER SIGNATURE      PRINTED NAME      DATE/TIME

# Metals Analysis of Paints

(AIHA-LAP, LLC Accreditation, Lab ID #101629)

Vista Environmental Consultants  
 Chris Burns  
 2984 Teagarden St.

San Leandro, CA 94577

**Client ID:** L1161  
**Report Number:** M275618  
**Date Received:** 01/30/26  
**Date Analyzed:** 02/02/26  
**Date Printed:** 02/02/26  
**First Reported:** 02/02/26

**Job ID / Site:** 250036001; 824 4th St., Orland  
**Date(s) Collected:** 1/26/26

**SGSFL Job ID:** L1161  
**Total Samples Submitted:** 16  
**Total Samples Analyzed:** 16

Sample Number	Lab Number	Analyte	Result	Result Units	Reporting Limit*	Method Reference
824-PB01	LM301702	Pb	0.007	wt%	0.006	EPA 3050B/7000B
824-PB02	LM301703	Pb	1.5	wt%	0.2	EPA 3050B/7000B
824-PB03	LM301704	Pb	0.67	wt%	0.06	EPA 3050B/7000B
824-PB04	LM301705	Pb	0.046	wt%	0.006	EPA 3050B/7000B
824-PB05	LM301706	Pb	8	wt%	2	EPA 3050B/7000B
824-PB06	LM301707	Pb	1.2	wt%	0.2	EPA 3050B/7000B
824-PB07	LM301708	Pb	0.89	wt%	0.06	EPA 3050B/7000B
824-PB08	LM301709	Pb	< 0.006	wt%	0.006	EPA 3050B/7000B
824-PB09	LM301710	Pb	< 0.006	wt%	0.006	EPA 3050B/7000B
824-PB12	LM301711	Pb	0.091	wt%	0.006	EPA 3050B/7000B
824-PB13	LM301712	Pb	< 0.006	wt%	0.006	EPA 3050B/7000B
824-PB14	LM301713	Pb	1.4	wt%	0.2	EPA 3050B/7000B
824-PB15	LM301714	Pb	0.71	wt%	0.06	EPA 3050B/7000B
824-PB16	LM301715	Pb	0.58	wt%	0.06	EPA 3050B/7000B
824-PB10	LM301716	Pb	0.0015	wt%	0.0006	EPA 3050B/7000B
824-PB11	LM301717	Pb	< 0.0006	wt%	0.0006	EPA 3050B/7000B

\* The Reporting Limit represents the lowest amount of analyte that the laboratory can confidently detect in the sample, and is not a regulatory level. The Units for the Reporting Limit are the same as the Units for the Final Results.



Vincent To, Laboratory Supervisor, Carson Laboratory

Analytical results and reports are generated by SGS at the request of and for the exclusive use of the person or entity (client) named on such report. Results, reports or copies of same will not be released by SGS to any third party without prior written request from client. This report applies only to the sample(s) tested. Supporting laboratory documentation is available upon request. This report must not be reproduced except in full, unless approved by SGS. The client is solely responsible for the use and interpretation of test results and reports requested from SGS. SGS is not able to assess the degree of hazard resulting from materials analyzed. SGS reserves the right to dispose of all samples after a period of thirty (30) days, according to all state and federal guidelines, unless otherwise specified. Any modifications that have been made to referenced test methods are documented in SGS Standard Operating Procedures Manual. Sample results have not been blank corrected. Quality control and sample receipt condition were acceptable unless otherwise noted.

Note\* Sampling data used in this report was provided by the client as noted on the associated chain of custody form.

# LEAD BULK SAMPLE LOG

Oakland     Monterey     Anaheim     San Diego

CLIENT: PARC

DATE: 1/26/26

SITE/LOCATION: 824 4th St., Orland

PROJECT NUMBER: 250036001

SAMPLED BY: CB

CDPH CERT. NUMBER: 0698

Sample Number	Sample Location	Component	Color	Substrate	Quantity (sf/lf/ea)
✓ 824-PB01	EXT	Wall	RED	STUCCO	INTACT
✗ 824-PB02	EXT	Wall	Light Brown	Concrete	DAMAGED
✗ 824-PB03	EXT	Trim	Beige	Metal	DAMAGED
✗ 824-PB04	EXT	Parking stripe	White	Concrete	DAMAGED
✗ 824-PB05	EXT		Yellow	Concrete	D
✗ 824-PB06	EXT	Wall	Light Gray	Concrete	D
✓ 824-PB07	INT-EAST	Walls & Columns ceiling	OFF-white	Drywall + Plaster	I
✓ 824-PB08	INT-EAST	Wainscot, Doors, DFrame	Black	WOOD	I
✓ 824-PB09	INT-EAST	Walls, Columns	Green	Drywall + Plaster	I
✓ 824-PB10	INT-EAST	FLOOR	Gray	VINYL	I

Analytical Method:    Lead: Flame AA    TTLC    STLC    TCLP

Turnaround Time:    Same Day 24hr 48 HR 3 day

E-Mail: [chrisburns@vista-env.com](mailto:chrisburns@vista-env.com) Phone: 925.348.5361

Special Instructions: \_\_\_\_\_

### CHAIN OF CUSTODY

1. [Signature]  
Relinquished By (Sampler): Signature

Luis J. Rocha  
Printed Name

01/27/26 - 0900  
Dates Samples in Possession of Signer

2. \_\_\_\_\_  
Transfer/Courier: Signature

\_\_\_\_\_  
Printed Name

\_\_\_\_\_  
Dates Samples in Possession of Signer

3. [Signature]  
Received by: Signature - Laboratory

Shirlysa Tieng  
Printed Name - Laboratory

1/30/26 935 FX  
Date Received

# LEAD BULK SAMPLE LOG

Oakland     Monterey     Anaheim     San Diego

CLIENT: PARC

DATE: 1/26/26

SITE/LOCATION: 824 4th St., Orland

PROJECT NUMBER: 250036001

SAMPLED BY: CB

CDPH CERT. NUMBER: 0698

Sample Number	Sample Location	Component	Color	Substrate	Quantity (sf/lf/ea)
✓ 824-PB11	INT-EAST	FLOOR	Blue	Vinyl	Inter
824-PB12	INT-WEST	Column	Gray	Plaster	D
✓ 824-PB13	INT-WEST	Walls	White	Drywall	I
✓ 824-PB14	INT-WEST	W&C	White	Plaster	D
824-PB15	INT-WEST	DOORS	Light Green	WOOD	I
✓ 824-PB16	INT-WEST	wall	White	Concrete	I
<del>16 SAMPLES</del>					

Analytical Method:    Lead: Flame AA    TTLC    STLC    TCLP

Turnaround Time:    Same Day 24hr 48 HR 3 day

E-Mail: [chrisburns@vista-env.com](mailto:chrisburns@vista-env.com) Phone: 925.348.5361

Special Instructions: \_\_\_\_\_

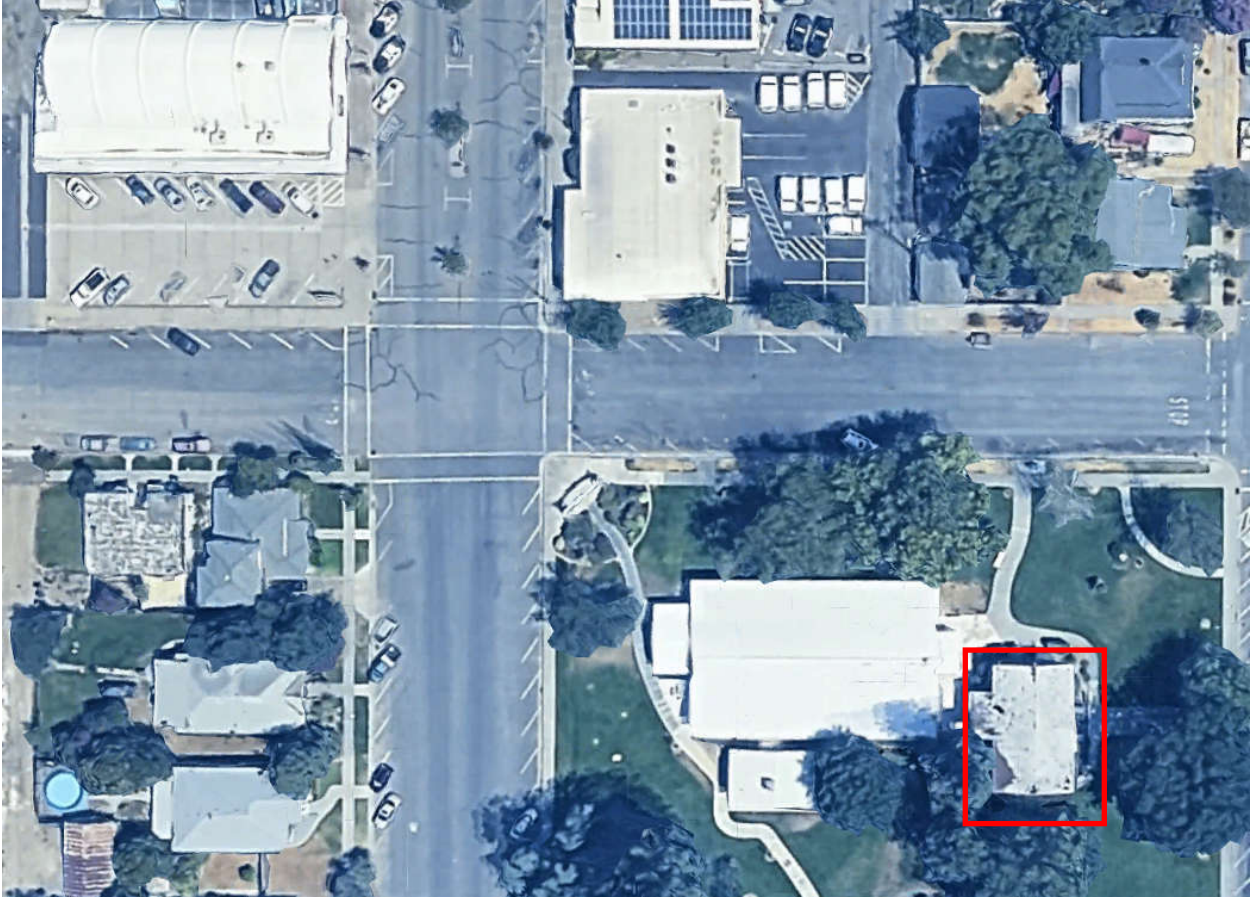
CHAIN OF CUSTODY.

1. [Signature] WIS J. Rocha 01/27/26 - 0900  
 Relinquished By (Sampler): Signature    Printed Name    Dates Samples in Possession of Signer

2. \_\_\_\_\_  
 Transfer/Courier: Signature    Printed Name    Dates Samples in Possession of Signer

3. [Signature] Shirlysa Tieng 1/30/26 935 FX  
 Received by: Signature - Laboratory    Printed Name - Laboratory    Date Received

## 912 3<sup>RD</sup> STREET, ORLAND



*The information contained in these appendices are not stand-alone documents and should not be separated from this report. For specific regulatory requirements regarding these materials please refer to the information provided in the Main Report. Quantities and locations listed in the tables are order of magnitude estimates and are not to be used for bidding purposes. It is the sole responsibility of the contractor to verify quantities and locations of hazardous materials in the path of construction through site visits and contractual bid set documents, including, but not limited to all specifications, drawings, and addenda. Any discrepancies between the contractual bid set documentation and site visits must be submitted in writing to the Owner or Owner's representative, prior to bidding.*

*NESHAP classifications are based upon the material's condition at the time of the survey or as rendered as a result of standard manual removal/demolition techniques. The use of "mechanical means", non-standard or other aggressive removal/demolition techniques may result in a different classification. NESHAP & Cal-OSHA classifications are based on the materials being >1% asbestos pending further analytical data that proves otherwise.*

# 912 3<sup>RD</sup> STREET, ORLAND HAZARDOUS MATERIALS SUMMARY

## *Asbestos*

HOMO. ID	MATERIAL	DESCRIPTION	LOCATION	CAL/OSHA CLASS	NESHAP CATEGORY	ESTIMATED QUANTITY
F	Vinyl Floor Tile/Mastic	12" White, Green Streaks/Yellow (Asbestos is in an Unknown Tile under this Tile	Throughout Town Council Room Under Carpeting and Wood Platform. Assumed in Closet 2 and Kitchen Under the Vinyl Sheet Flooring	Class II	Category I - Non-Friable	1,500 SF
BB	Mastic	Gray & Black, Roof	Roof	Class II	Category I - Non-Friable	15 SF

## *Lead*

Sample #	Component	Substrate	Color	Location	Result	Units
912-PB01	Walls & Ceilings	Plaster	Peach	Interior	<0.006	wt%
<b>912-PB02</b>	<b>Trim, Doors/Door Frames &amp; Baseboards</b>	<b>Wood</b>	<b>White</b>	<b>Interior</b>	<b>0.7</b>	<b>wt%</b>
912-PB03	Walls & Ceilings	Drywall	White	Interior	<0.007	wt%
912-PB04	Floor	Vinyl	Brown	Interior	<0.007	wt%
912-PB05	Cabinets	Wood	Varnish	Interior	<0.007	wt%
912-PB06	Hand Rails & Down Spouts	Metal	Brown	Exterior	0.1	wt%
912-PB07	Walls	Stucco	Brown	Exterior	0.011	wt%
<b>912-PB08</b>	<b>Fascia, Eaves, Doors/Door Frames, Windows/Window Frames</b>	<b>Wood</b>	<b>Brown</b>	<b>Exterior</b>	<b>3.6</b>	<b>wt%</b>
<b>912-PB09</b>	<b>Walls &amp; Ceilings</b>	<b>Plaster</b>	<b>White</b>	<b>Interior</b>	<b>1.4</b>	<b>wt%</b>
912-PB10	Door Frames & Baseboards	Wood	Blue	Interior	<0.007	wt%
912-PB11	Floor	Concrete	Gray	Interior	0.029	wt%

**Bold** =Lead-Based

912 3<sup>RD</sup> STREET, ORLAND  
HAZARDOUS MATERIALS SUMMARY

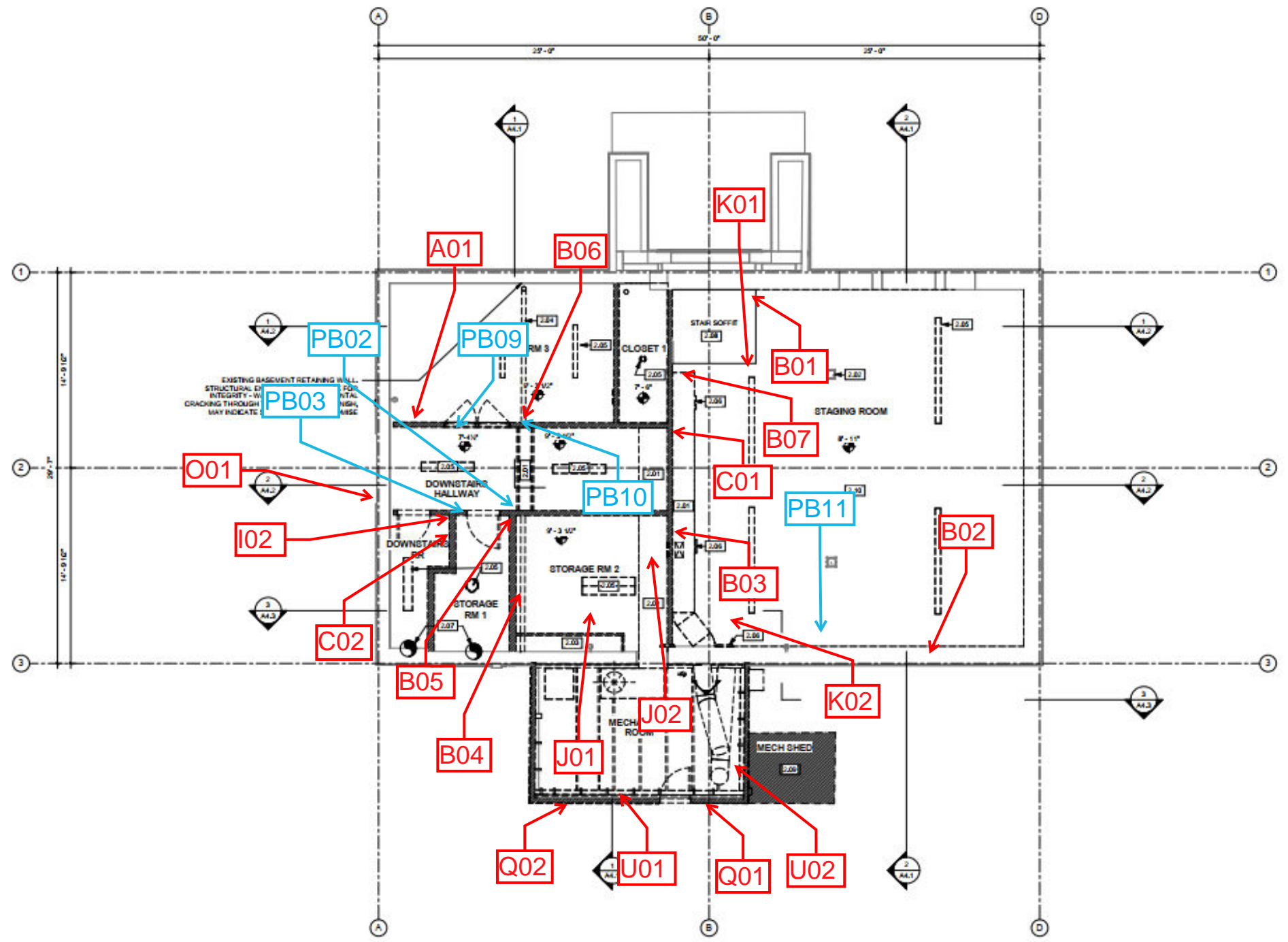
*Devices with Potential Hazardous Materials*

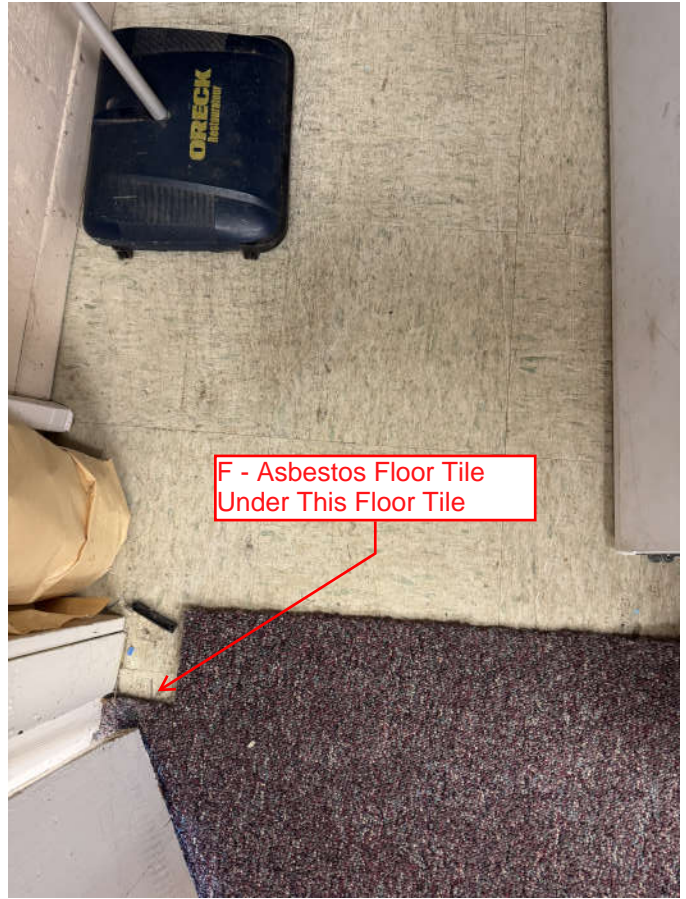
MATERIAL	CONTAMINANT	ESTIMATED QUANTITY
Fluorescent Tubes (4' Length)	Universal Waste	101
Other Non-Incandescent Lamps	Universal Waste	5
Batteries: Emergency Lights	Universal Waste	1
Light Fixture Ballasts	Polychlorinated Biphenyls	51
HVAC Unit	Ozone Depleting Chemicals	1
Water Coolers/Fountains	Ozone Depleting Chemicals	1
Thermostat Triggers	Mercury	2
Smoke Detectors	Low-Level Radiation	1

912 3<sup>RD</sup> STREET, ORLAND  
ASBESTOS SAMPLING INVENTORY

HOMOGENEOUS ID	MATERIAL	DESCRIPTION	# OF SAMPLES
A	Paint/Plaster	Beige/White	3
B	Texture Coat	White, Medium	7
C	Wallboard/Joint Compound	White/White	2
D	Vinyl Sheet Flooring/Backing	Beige, Square Pattern/Beige	2
E	Mastic	White, Sink	1
F	Vinyl Floor Tile/Mastic	12" White, Green Streaks/Yellow	2
G	Vinyl Sheet Flooring	Beige, Swirl	2
H	Basecove/Mastic	6" Beige/Yellow	2
I	Mastic	Yellow, Wainscot	2
J	Vinyl Floor Tile/Mastic	9" Beige/Yellow	2
K	Acoustical Ceiling Tile	12" White, Uniform Hole	2
L	Paint/Stucco	Red/Gray, Exterior	3
M	Brick/Mortar	Tan/Tan	2
N	Stone/Mortar	Red/Gray	2
O	Sealant	White, Door Frame (Basement)	1
P	Paint/Putty	Brown/White, Wood Windows	2
Q	Faux Brick/Mortar	Tan/Off-White	2
R	Patch	Gray, Stucco	2
S	Concrete	Gray, Walkway	2
T	Sealant	Gray, Store Front	1
U	Vapor Barrier	Black, Wall	2
V	Insulation	White, Blown-In	3
W	Patch	White, Brick Walls	1
X	Mastic	Yellow, Carpet	2
Y	Concrete	Gray, Foundation	2
Z	Basecove/Mastic	2" Brown/Beige	1
AA	Roofing	Gray & Black, Built-Up	2
BB	Mastic	Gray & Black, Roof	2







# Bulk Asbestos Analysis

(EPA Method 40CFR, Part 763, Appendix E to Subpart E and EPA 600/R-93-116, Visual Area Estimation)  
 NVLAP Lab Code: 101459-0

Vista Environmental Consultants  
 Chris Burns  
 2984 Teagarden St.  
 San Leandro, CA 94577

**Client ID:** L1161  
**Report Number:** B380526  
**Date Received:** 02/02/26  
**Date Analyzed:** 02/05/26  
**Date Printed:** 02/05/26  
**First Reported:** 02/05/26

**Job ID/Site:** 250036001- 912 3rd St, Orland

**SGSFL Job ID:** L1161  
**Total Samples Submitted:** 58  
**Total Samples Analyzed:** 58

**Date(s) Collected:** 01/27/2026

Sample ID	Lab Number	Asbestos Type	Percent in Layer	Asbestos Type	Percent in Layer	Asbestos Type	Percent in Layer
<b>A-01</b>	12845452						
Layer: Grey Plaster			ND				
Layer: White Plaster			ND				
Layer: Paint			ND				
Total Percentage Values of Non-Asbestos Fibrous Components:							
Cellulose (Trace)							
<b>A-02</b>	12845453						
Layer: Brown Plaster			ND				
Layer: Paint			ND				
Total Percentage Values of Non-Asbestos Fibrous Components:							
Cellulose (Trace)							
<b>A-03</b>	12845454						
Layer: Grey Plaster			ND				
Layer: White Plaster			ND				
Layer: Paint			ND				
Total Percentage Values of Non-Asbestos Fibrous Components:							
Cellulose (Trace)							
<b>C-01</b>	12845455						
Layer: White Drywall			ND				
Layer: White Joint Compound			ND				
Layer: Paint			ND				
Total Percentage Values of Non-Asbestos Fibrous Components:							
Cellulose (20 %)    Fibrous Glass (10 %)							
<b>C-02</b>	12845456						
Layer: White Drywall			ND				
Layer: Off-White Joint Compound			ND				
Layer: Paint			ND				
Total Percentage Values of Non-Asbestos Fibrous Components:							
Cellulose (20 %)    Fibrous Glass (10 %)							
<b>B-01</b>	12845457						
Layer: White Texture			ND				
Layer: Paint			ND				
Total Percentage Values of Non-Asbestos Fibrous Components:							
Cellulose (Trace)							

Client Name: Vista Environmental Consultants

Report Number: B380526

Date Printed: 02/05/26

Sample ID	Lab Number	Asbestos Type	Percent in Layer	Asbestos Type	Percent in Layer	Asbestos Type	Percent in Layer
<b>B-02</b>	12845458						
Layer: White Texture			ND				
Layer: Paint			ND				
Total Percentage Values of Non-Asbestos Fibrous Components: Cellulose (Trace)							
<b>B-03</b>	12845459						
Layer: White Texture			ND				
Layer: Paint			ND				
Total Percentage Values of Non-Asbestos Fibrous Components: Cellulose (Trace)							
<b>B-04</b>	12845460						
Layer: White Texture			ND				
Layer: Paint			ND				
Total Percentage Values of Non-Asbestos Fibrous Components: Cellulose (Trace)							
<b>B-05</b>	12845461						
Layer: White Texture			ND				
Layer: Paint			ND				
Total Percentage Values of Non-Asbestos Fibrous Components: Cellulose (Trace)							
<b>B-06</b>	12845462						
Layer: White Texture			ND				
Layer: Paint			ND				
Total Percentage Values of Non-Asbestos Fibrous Components: Cellulose (Trace)							
<b>B-07</b>	12845463						
Layer: White Texture			ND				
Layer: Paint			ND				
Total Percentage Values of Non-Asbestos Fibrous Components: Cellulose (Trace)							
<b>D-01</b>	12845464						
Layer: Brown Sheet Flooring			ND				
Layer: Fibrous Backing			ND				
Total Percentage Values of Non-Asbestos Fibrous Components: Cellulose (20 %)							
<b>D-02</b>	12845465						
Layer: Brown Sheet Flooring			ND				
Layer: Fibrous Backing			ND				
Total Percentage Values of Non-Asbestos Fibrous Components: Cellulose (20 %)							
<b>E-01</b>	12845466						
Layer: Off-White Mastic			ND				
Total Percentage Values of Non-Asbestos Fibrous Components:							

Client Name: Vista Environmental Consultants

Report Number: B380526

Date Printed: 02/05/26

Sample ID	Lab Number	Asbestos Type	Percent in Layer	Asbestos Type	Percent in Layer	Asbestos Type	Percent in Layer
<b>F-01</b>	12845467						
Layer: Beige Sheet Flooring			<b>ND</b>				
Layer: Off-White Sheet Flooring		Chrysotile	<b>Trace</b>				
Layer: Yellow Mastic			<b>ND</b>				
Total Percentage Values of Non-Asbestos Fibrous Components: Cellulose (Trace)							
<b>F-02</b>	12845468						
Layer: Beige Sheet Flooring			<b>ND</b>				
Layer: Yellow Mastic			<b>ND</b>				
Total Percentage Values of Non-Asbestos Fibrous Components: Cellulose (Trace)							
<b>G-01</b>	12845469						
Layer: Beige Sheet Flooring			<b>ND</b>				
Layer: Fibrous Backing			<b>ND</b>				
Layer: Yellow Mastic			<b>ND</b>				
Total Percentage Values of Non-Asbestos Fibrous Components: Cellulose (20 %)    Fibrous Glass (5 %)    Synthetic (3 %)							
<b>G-02</b>	12845470						
Layer: Beige Sheet Flooring			<b>ND</b>				
Layer: Fibrous Backing			<b>ND</b>				
Layer: Yellow Mastic			<b>ND</b>				
Total Percentage Values of Non-Asbestos Fibrous Components: Cellulose (20 %)    Fibrous Glass (5 %)    Synthetic (3 %)							
<b>H-01</b>	12845471						
Layer: Off-White Non-Fibrous Material			<b>ND</b>				
Layer: Beige Mastic			<b>ND</b>				
Total Percentage Values of Non-Asbestos Fibrous Components: Cellulose (Trace)							
<b>H-02</b>	12845472						
Layer: Off-White Non-Fibrous Material			<b>ND</b>				
Layer: Beige Mastic			<b>ND</b>				
Total Percentage Values of Non-Asbestos Fibrous Components: Cellulose (Trace)							
<b>I-01</b>	12845473						
Layer: Beige Mastic			<b>ND</b>				
Layer: Paint			<b>ND</b>				
Total Percentage Values of Non-Asbestos Fibrous Components: Cellulose (Trace)							
<b>J-01</b>	12845474						
Layer: Brown Tile			<b>ND</b>				
Layer: Tan Mastic			<b>ND</b>				
Total Percentage Values of Non-Asbestos Fibrous Components: Cellulose (Trace)							

Client Name: Vista Environmental Consultants

Report Number: B380526

Date Printed: 02/05/26

Sample ID	Lab Number	Asbestos Type	Percent in Layer	Asbestos Type	Percent in Layer	Asbestos Type	Percent in Layer
<b>J-02</b>	12845475						
Layer: Brown Tile			ND				
Layer: Tan Mastic			ND				
Total Percentage Values of Non-Asbestos Fibrous Components: Cellulose (Trace)							
<b>K-01</b>	12845476						
Layer: Tan Fibrous Material			ND				
Layer: Paint			ND				
Total Percentage Values of Non-Asbestos Fibrous Components: Cellulose (95 %)							
<b>K-02</b>	12845477						
Layer: Tan Fibrous Material			ND				
Layer: Paint			ND				
Total Percentage Values of Non-Asbestos Fibrous Components: Cellulose (95 %)							
<b>L-01</b>	12845478						
Layer: Grey Cementitious Material			ND				
Layer: Paint			ND				
Total Percentage Values of Non-Asbestos Fibrous Components: Cellulose (Trace)							
<b>L-02</b>	12845479						
Layer: Grey Cementitious Material			ND				
Layer: Paint			ND				
Total Percentage Values of Non-Asbestos Fibrous Components: Cellulose (Trace)							
<b>L-03</b>	12845480						
Layer: Grey Cementitious Material			ND				
Layer: Paint			ND				
Total Percentage Values of Non-Asbestos Fibrous Components: Cellulose (Trace)							
<b>M-01</b>	12845481						
Layer: Tan Cementitious Material			ND				
Layer: Grey Cementitious Material			ND				
Layer: Paint			ND				
Total Percentage Values of Non-Asbestos Fibrous Components: Cellulose (Trace)							
<b>M-02</b>	12845482						
Layer: Tan Cementitious Material			ND				
Layer: Grey Cementitious Material			ND				
Layer: Paint			ND				
Total Percentage Values of Non-Asbestos Fibrous Components: Cellulose (Trace)							

Client Name: Vista Environmental Consultants

Report Number: B380526

Date Printed: 02/05/26

Sample ID	Lab Number	Asbestos Type	Percent in Layer	Asbestos Type	Percent in Layer	Asbestos Type	Percent in Layer
<b>N-01</b>	12845483						
Layer: Red-Brown Cementitious Material			ND				
Layer: Grey Mortar			ND				
Total Percentage Values of Non-Asbestos Fibrous Components:							
<b>N-02</b>	12845484						
Layer: Red-Brown Cementitious Material			ND				
Layer: Grey Mortar			ND				
Total Percentage Values of Non-Asbestos Fibrous Components:							
<b>O-01</b>	12845485						
Layer: White Non-Fibrous Material			ND				
Layer: Paint			ND				
Total Percentage Values of Non-Asbestos Fibrous Components:							
Cellulose (Trace)							
<b>P-01</b>	12845486						
Layer: Off-White Putty			ND				
Layer: Paint			ND				
Total Percentage Values of Non-Asbestos Fibrous Components:							
Cellulose (Trace)							
<b>P-02</b>	12845487						
Layer: White Putty			ND				
Layer: Paint			ND				
Total Percentage Values of Non-Asbestos Fibrous Components:							
Cellulose (Trace)							
<b>Q-01</b>	12845488						
Layer: White Non-Fibrous Material			ND				
Layer: Red-Brown Cementitious Material			ND				
Total Percentage Values of Non-Asbestos Fibrous Components:							
Cellulose (2 %)		Fibrous Glass (Trace)					
<b>Q-02</b>	12845489						
Layer: White Non-Fibrous Material			ND				
Layer: Red-Brown Cementitious Material			ND				
Total Percentage Values of Non-Asbestos Fibrous Components:							
Cellulose (2 %)		Fibrous Glass (Trace)					
<b>R-01</b>	12845490						
Layer: Grey Cementitious Material			ND				
Layer: Paint			ND				
Total Percentage Values of Non-Asbestos Fibrous Components:							
Cellulose (Trace)							
<b>S-01</b>	12845491						
Layer: Grey Cementitious Material			ND				
Total Percentage Values of Non-Asbestos Fibrous Components:							
Cellulose (Trace)							

Client Name: Vista Environmental Consultants

Report Number: B380526

Date Printed: 02/05/26

Sample ID	Lab Number	Asbestos Type	Percent in Layer	Asbestos Type	Percent in Layer	Asbestos Type	Percent in Layer
<b>S-02</b>	12845492						
Layer: Grey Cementitious Material			<b>ND</b>				
Total Percentage Values of Non-Asbestos Fibrous Components: Cellulose (Trace)							
<b>T-01</b>	12845493						
Layer: Grey Non-Fibrous Material			<b>ND</b>				
Total Percentage Values of Non-Asbestos Fibrous Components: Cellulose (Trace)							
<b>U-01</b>	12845494						
Layer: Brown Felt			<b>ND</b>				
Total Percentage Values of Non-Asbestos Fibrous Components: Cellulose (99 %)							
<b>U-02</b>	12845495						
Layer: Brown Felt			<b>ND</b>				
Total Percentage Values of Non-Asbestos Fibrous Components: Cellulose (99 %)							
<b>V-01</b>	12845496						
Layer: White Fibrous Material			<b>ND</b>				
Total Percentage Values of Non-Asbestos Fibrous Components: Fibrous Glass (100 %)							
<b>V-02</b>	12845497						
Layer: White Fibrous Material			<b>ND</b>				
Total Percentage Values of Non-Asbestos Fibrous Components: Fibrous Glass (100 %)							
<b>V-03</b>	12845498						
Layer: White Fibrous Material			<b>ND</b>				
Total Percentage Values of Non-Asbestos Fibrous Components: Fibrous Glass (100 %)							
<b>W-01</b>	12845499						
Layer: White Non-Fibrous Material			<b>ND</b>				
Total Percentage Values of Non-Asbestos Fibrous Components:							
<b>X-01</b>	12845500						
Layer: Tan Mastic			<b>ND</b>				
Total Percentage Values of Non-Asbestos Fibrous Components: Synthetic (45 %)							
<b>X-02</b>	12845501						
Layer: Tan Mastic			<b>ND</b>				
Total Percentage Values of Non-Asbestos Fibrous Components: Synthetic (45 %)							

Client Name: Vista Environmental Consultants

Report Number: B380526

Date Printed: 02/05/26

Sample ID	Lab Number	Asbestos Type	Percent in Layer	Asbestos Type	Percent in Layer	Asbestos Type	Percent in Layer
<b>Y-01</b>	12845502						
Layer: Grey Cementitious Material			<b>ND</b>				
Total Percentage Values of Non-Asbestos Fibrous Components: Cellulose (Trace)							
<b>Y-02</b>	12845503						
Layer: Grey Cementitious Material			<b>ND</b>				
Total Percentage Values of Non-Asbestos Fibrous Components: Cellulose (Trace)							
<b>Z-01</b>	12845504						
Layer: Brown Non-Fibrous Material			<b>ND</b>				
Layer: Beige Mastic			<b>ND</b>				
Total Percentage Values of Non-Asbestos Fibrous Components: Cellulose (Trace)							
<b>R-02</b>	12845505						
Layer: Grey Cementitious Material			<b>ND</b>				
Layer: Paint			<b>ND</b>				
Total Percentage Values of Non-Asbestos Fibrous Components: Cellulose (Trace)							
<b>AA-01</b>	12845506						
Layer: Tan Fibrous Material			<b>ND</b>				
Layer: Black Tar			<b>ND</b>				
Layer: Black Felt			<b>ND</b>				
Layer: Black Tar			<b>ND</b>				
Layer: Black Felt			<b>ND</b>				
Layer: Black Tar			<b>ND</b>				
Layer: Black Felt			<b>ND</b>				
Total Percentage Values of Non-Asbestos Fibrous Components: Cellulose (40 %)    Fibrous Glass (10 %) Comment: Bulk complex sample.							
<b>AA-02</b>	12845507						
Layer: Tan Fibrous Material			<b>ND</b>				
Layer: Black Tar			<b>ND</b>				
Layer: Black Felt			<b>ND</b>				
Layer: Black Tar			<b>ND</b>				
Layer: Black Felt			<b>ND</b>				
Layer: Black Tar			<b>ND</b>				
Layer: Black Felt			<b>ND</b>				
Total Percentage Values of Non-Asbestos Fibrous Components: Cellulose (40 %)    Fibrous Glass (10 %) Comment: Bulk complex sample.							
<b>BB-01</b>	12845508						
Layer: Black Semi-Fibrous Tar		Chrysotile	<b>3 %</b>				
Total Percentage Values of Non-Asbestos Fibrous Components: Cellulose (Trace)							

Client Name: Vista Environmental Consultants

Report Number: B380526

Date Printed: 02/05/26

Sample ID	Lab Number	Asbestos Type	Percent in Layer	Asbestos Type	Percent in Layer	Asbestos Type	Percent in Layer
<b>BB-02</b>	12845509						
Layer: Black Semi-Fibrous Tar		Chrysotile	3 %				
Total Percentage Values of Non-Asbestos Fibrous Components:							
Cellulose (Trace)							



Maria Casper, Laboratory Supervisor, Hayward Laboratory

Note: Limit of Quantification ('LOQ') = 1%. 'Trace' denotes the presence of asbestos below the LOQ. 'ND' = 'None Detected'.

Inhomogeneous samples are separated into homogenous subsamples and analyzed individually. Analytical results and reports are generated by SGS at the request of and for the exclusive use of the person or entity (client) named on such report. Results, reports or copies of same will not be released by SGS to any third party without prior written request from client. This report applies only to the sample(s) tested. Supporting laboratory documentation is available upon request. This report must not be reproduced except in full, unless approved by SGS. The client is solely responsible for the use and interpretation of test results and reports requested from SGS. This report must not be used by the client to claim product endorsement by NVLAP or any other agency of the U.S. Government. SGS is not able to assess the degree of hazard resulting from materials analyzed. SGS reserves the right to dispose of all samples after a period of thirty (30) days, according to all state and federal guidelines, unless otherwise specified. All samples were received in acceptable condition unless otherwise noted.



VISTA ENVIRONMENTAL  
CONSULTING

ASBESTOS BULK SAMPLE LOG

2984 TEAGARDEN STREET  
SAN LEANDRO, CA 94577

OFFICE 510.346.8860  
FAX 888.653.8889

CLIENT: PARC

DATE: 01/27/26

LOCATION: 912 3rd St., Orland

PROJECT NUMBER: 250036001

SAMPLED BY: CB

CAC OR SST No: 92-0224

BUILDING	HOMO AREA ID	NUMBER	MATERIAL	DESCRIPTION	LOCATION	QUANTITY (SF/LF/EA)
912	A	01	PAINT/PLASTER	white/white	w/c	
912	A	02	↓	↓	↓	
912	A	03	↓	↓	↓	
912	C	01	w/c	white/white	w/c	
912	C	02	↓	↓	↓	
912	B	01	TEXTURE COAT	white, medium	w/c	
912	B	02				
912	B	03				
912	B	04				
912	B	05				

ANALYTICAL METHOD: PLM 400 PT COUNT TURNAROUND TIME: SAME DAY 24HR 48 HR 3 DAY

DATA SENT TO: Christopher Burns Via E-Mail: [chrisburns@vista-env.com](mailto:chrisburns@vista-env.com) ; [nocaladmin@vista-env.com](mailto:nocaladmin@vista-env.com)  
Questions call: Office\_510.346.8860 Cell\_925.348.5361

SPECIAL INSTRUCTIONS:

CHAIN OF CUSTODY:

1. [Signature]  
TRANSFER SIGNATURE

Luis J. Rocha  
PRINTED NAME

01/27/26-0900  
DATE/TIME

2. [Signature]  
TRANSFER SIGNATURE

Shirlysa Tieng  
PRINTED NAME

1/30/26 935 FX  
DATE/TIME

3. [Signature]  
TRANSFER SIGNATURE

Shirlysa Tieng  
PRINTED NAME

1/30/26 3PM FX  
DATE/TIME

PAGE 1 OF 6

FEB 03 2026

MC [Signature]

Received  
Relinquish



VISTA ENVIRONMENTAL  
CONSULTING

ASBESTOS BULK SAMPLE LOG

2984 TEAGARDEN STREET  
SAN LEANDRO, CA 94577

OFFICE 510.346.8860  
FAX 888.653.8889

CLIENT: PARC

DATE: 01/27/26

LOCATION: 912 3rd St., Orland

PROJECT NUMBER: 250036001

SAMPLED BY: CB

CAC OR SST No: 92-0224

BUILDING	HOMO AREA ID	NUMBER	MATERIAL	DESCRIPTION	LOCATION	QUANTITY (SF/LF/EA)
912	B	06	↓	↓	↓	
912	B	07	↓	↓	↓	
912	D	01	VSF/BACK	BEIGE, SQUARE PATTERN / BEIGE		
912	D	02	↓	↓	↓	
912	E	01	MASTIC	WHITE	SINK	
912	F	01	VFT/MAS	12" WHITE W/ GREEN STREAKS / YELLOW		
912	F	02	↓	↓	↓	
912	G	01	VSF/BACK	BEIGE SWIRL / BEIGE		
912	G	02	↓	↓		
912	H	01	BASECOAT/MAS	6" BEIGE / YELLOW		

ANALYTICAL METHOD: PLM 400 PT COUNT      TURNAROUND TIME: SAME DAY 24HR 48 HR 3 DAY

DATA SENT TO: Christopher Burns Via E-Mail: [chrisburns@vista-env.com](mailto:chrisburns@vista-env.com) ; [nocaladmin@vista-env.com](mailto:nocaladmin@vista-env.com)  
Questions call: Office 510.346.8860 Cell 925.348.5361

SPECIAL INSTRUCTIONS: \_\_\_\_\_

CHAIN OF CUSTODY:

1. [Signature] TRANSFER SIGNATURE      LUIS E. POOMA PRINTED NAME      01/27/26-0900 DATE/TIME

Received 2. [Signature] TRANSFER SIGNATURE      Shirlysa Tieng PRINTED NAME      1/30/26 935 FX DATE/TIME

Relinquish 3. [Signature] TRANSFER SIGNATURE      Shirlysa Tieng PRINTED NAME      1/30/26 3PM FX DATE/TIME

PAGE 2 OF 6

FEB 02 2026  
Mc [Signature]



VISTA ENVIRONMENTAL  
CONSULTING

ASBESTOS BULK SAMPLE LOG

2984 TEAGARDEN STREET  
SAN LEANDRO, CA 94577

OFFICE 510.346.8860  
FAX 888.653.8889

CLIENT: PARC

DATE: 01/27/26

LOCATION: 912 3rd St., Orland

PROJECT NUMBER: 250036001

SAMPLED BY: CB

CAC OR SST No: 92-0224

BUILDING	HOMO AREA ID	NUMBER	MATERIAL	DESCRIPTION	LOCATION	QUANTITY (SF/LF/EA)
912	H	02	↓	↓		
912	I	01	MASTIC	YELLOW	WAINSCOT	
<del>912</del>	<del>I</del>	<del>02</del>	<del>↓</del>	<del>↓</del>	<del>↓</del>	
912	J	01	VPT/MAS	9" BEIGE/YELLOW		
912	J	02	↓	↓		
912	K	01	ACT	12" WHITE	UNIFORM HOLE	
912	K	02	↓	↓	↓	
912	L	01	PAINT/STUCCO	RED/GRAY	EXTERIOR	
912	L	02	↓	↓	↓	
912	L	03	↓	↓	↓	

ANALYTICAL METHOD: PLM 400 PT COUNT      TURNAROUND TIME: SAME DAY 24HR 48 HR 3 DAY

DATA SENT TO: Christopher Burns Via E-Mail: [chrisburns@vista-env.com](mailto:chrisburns@vista-env.com) ; [nocaladmin@vista-env.com](mailto:nocaladmin@vista-env.com)  
Questions call: Office\_510.346.8860 Cell\_925.348.5361

SPECIAL INSTRUCTIONS: \_\_\_\_\_

CHAIN OF CUSTODY:

1. [Signature] TRANSFER SIGNATURE      LUIS J. ROCHA PRINTED NAME      01/27/26-0900 DATE/TIME
2. [Signature] TRANSFER SIGNATURE      SHIRLYSA TIENG PRINTED NAME      1/30/26 DATE/TIME  
935 FX
3. [Signature] TRANSFER SIGNATURE      SHIRLYSA TIENG PRINTED NAME      1/30/26 3PM FX DATE/TIME

PAGE 3 OF 6

FEB 02 2026  
ML J 10FX



VISTA ENVIRONMENTAL  
CONSULTING

ASBESTOS BULK SAMPLE LOG

2984 TEAGARDEN STREET  
SAN LEANDRO, CA 94577

OFFICE 510.346.8860  
FAX 888.653.8889

CLIENT: PARC

DATE: 01/27/26

LOCATION: 912 3rd St., Orland

PROJECT NUMBER: 250036001

SAMPLED BY: CB

CAC OR SST No: 92-0224

BUILDING	HOMO AREA ID	NUMBER	MATERIAL	DESCRIPTION	LOCATION	QUANTITY (SF/LF/EA)
912	M	01	BRICK/MORTAR	TAN/TAN	EXTERIOR	
912	M	02	↓	↓	↓	
912	N	01	STONE/MORTAR	RED/GRAY	EXTERIOR	
912	N	02	↓	↓	↓	
912	O	01	SEALANT	WHITE	DOOR FRAME	
912	P	01	PAINT/PUTTY	BROWN/WHITE	WOOD WINDOWS	
912	P	02	↓	↓	↓	
912	Q	01	FAUX BRICK/MORTAR	TAN/OFF-WHITE	EXTERIOR	
912	Q	02	↓	↓	↓	
912	R	01	STUCCO	BROWN/GRAY	PATCH EXTERIOR	

ANALYTICAL METHOD: PLM 400 PT COUNT      TURNAROUND TIME: SAME DAY 24HR 48 HR 3 DAY

DATA SENT TO: Christopher Burns Via E-Mail: [chrisburns@vista-env.com](mailto:chrisburns@vista-env.com) ; [nocaladmin@vista-env.com](mailto:nocaladmin@vista-env.com)  
Questions call: Office\_510.346.8860 Cell\_925.348.5361

SPECIAL INSTRUCTIONS: \_\_\_\_\_

CHAIN OF CUSTODY:

1. [Signature]      Luis S. Rocha      01/27/26 - 0900  
TRANSFER SIGNATURE      PRINTED NAME      DATE/TIME
2. [Signature]      Shirlysa Tieng      1/30/26 935 FX  
TRANSFER SIGNATURE      PRINTED NAME      DATE/TIME
3. [Signature]      Shirlysa Tieng      1/30/26 3PM FX  
TRANSFER SIGNATURE      PRINTED NAME      DATE/TIME

RCD

RLG

PAGE 4 OF 6

FEB 02 2026  
MC [Signature]



VISTA ENVIRONMENTAL  
CONSULTING

ASBESTOS BULK SAMPLE LOG

2984 TEAGARDEN STREET  
SAN LEANDRO, CA 94577

OFFICE 510.346.8860  
FAX 888.653.8889

CLIENT: PARC

DATE: 01/27/26

LOCATION: 912 3rd St., Orland

PROJECT NUMBER: 250036001

SAMPLED BY: CB

CAC OR SST No: 92-0224

BUILDING	HOMO AREA ID	NUMBER	MATERIAL	DESCRIPTION	LOCATION	QUANTITY (SF/LF/EA)
912	S	01	CONCRETE	GRAY	WALKWAY	
912	S	02	↓	↓	↓	
912	T	01	SEALANT	GRAY	STORE FRONT	
912	U	01	VAPOR BARRIER	BLACK	WALLS	
912	U	02	↓	↓	↓	
912	V	01	INSULATION	WHITE	BLOWN-IN "ATTIC"	
912	V	02	↓	↓	↓	
912	V	03	↓	↓	↓	
912	W	01	PATCH	WHITE	EXTERIOR BRICK WALLS	
912	X	01	MASTIC	YELLOW	CARPET	

ANALYTICAL METHOD: PLM 400 PT COUNT      TURNAROUND TIME: SAME DAY 24HR 48HR 3 DAY

DATA SENT TO: Christopher Burns Via E-Mail: [chrisburns@vista-env.com](mailto:chrisburns@vista-env.com) ; [nocaladmin@vista-env.com](mailto:nocaladmin@vista-env.com)  
Questions call: Office\_510.346.8860 Cell\_925.348.5361

SPECIAL INSTRUCTIONS: \_\_\_\_\_

CHAIN OF CUSTODY:

1. [Signature]      LUIS J. ROCHA      01/27/26-0900  
TRANSFER SIGNATURE      PRINTED NAME      DATE/TIME
2. [Signature]      Shirlysa Tieng      1/30/26 9:35 FX  
TRANSFER SIGNATURE      PRINTED NAME      DATE/TIME
3. [Signature]      Shirlysa Tieng      1/30/26 3PM FX  
TRANSFER SIGNATURE      PRINTED NAME      DATE/TIME

RLD

RLQ

FEB 02 2026  
MC [Signature] 107X



VISTA ENVIRONMENTAL  
CONSULTING

ASBESTOS BULK SAMPLE LOG

2984 TEAGARDEN STREET  
SAN LEANDRO, CA 94577

OFFICE 510.346.8860  
FAX 888.653.8889

CLIENT: PARC

DATE: 01/27/26

LOCATION: 912 3rd St., Orland

PROJECT NUMBER: 250036001

SAMPLED BY: CB

CAC OR SST No: 92-0224

BUILDING	HOMO AREA ID	NUMBER	MATERIAL	DESCRIPTION	LOCATION	QUANTITY (SF/LF/EA)	
912	X	02	↓	↓			
912	Y	01	CONCRETE	GRAY	FOUNDATION		
912	Y	02	↓	↓	↓		
912	Z	01	ASBESTOS/MS	2" BROWN/BETGE			
912	R	02	STUCCO	BROWN/GRAY	PATCH		
912	AA	01	ROOFING	GRAY & BLACK	BUILT-UP		
912	AA	02	↓	↓	↓		
912	BB	01	MASTIC	GRAY & BLACK	ROOF		
912	BB	02	↓	↓	↓		
			58 SAMPLES				

ANALYTICAL METHOD: PLM 400 PT COUNT TURNAROUND TIME: SAME DAY 24HR 48HR 3 DAY

DATA SENT TO: Christopher Burns Via E-Mail: [chrisburns@vista-env.com](mailto:chrisburns@vista-env.com) ; [nocaladmin@vista-env.com](mailto:nocaladmin@vista-env.com)  
Questions call: Office\_510.346.8860 Cell\_925.348.5361

SPECIAL INSTRUCTIONS: \_\_\_\_\_

CHAIN OF CUSTODY:

1. Luise Rocha  
TRANSFER SIGNATURE

LUISE ROCHA 01/27/26  
PRINTED NAME DATE/TIME

RCD

2. [Signature]  
TRANSFER SIGNATURE

Shirlysa Tieng 1/30/26 935 FX  
PRINTED NAME DATE/TIME

RLQ

3. [Signature]  
TRANSFER SIGNATURE

Shirlysa Tieng 1/30/26 3PM FX  
PRINTED NAME DATE/TIME

PAGE 6 OF 6

FEB 02 2026  
MC [Signature]

# Metals Analysis of Paints

(AIHA-LAP, LLC Accreditation, Lab ID #101762)

Vista Environmental Consultants  
Chris Burns  
2984 Teagarden St.

San Leandro, CA 94577

**Client ID:** L1161  
**Report Number:** M275651  
**Date Received:** 02/02/26  
**Date Analyzed:** 02/05/26  
**Date Printed:** 02/05/26  
**First Reported:** 02/05/26

**Job ID / Site:** 250036001 - 912 3rd St, Orland  
**Date(s) Collected:** 1/26/26

**SGSFL Job ID:** L1161  
**Total Samples Submitted:** 11  
**Total Samples Analyzed:** 11

Sample Number	Lab Number	Analyte	Result	Result Units	Reporting Limit*	Method Reference
912-PB01	30965725	Pb	< 0.006	wt%	0.006	EPA 3050B/7000B
912-PB02	30965726	Pb	0.7	wt%	0.2	EPA 3050B/7000B
912-PB03	30965727	Pb	< 0.007	wt%	0.007	EPA 3050B/7000B
912-PB04	30965728	Pb	< 0.007	wt%	0.007	EPA 3050B/7000B
912-PB05	30965729	Pb	< 0.007	wt%	0.007	EPA 3050B/7000B
912-PB06	30965730	Pb	0.10	wt%	0.006	EPA 3050B/7000B
912-PB07	30965731	Pb	0.011	wt%	0.007	EPA 3050B/7000B
912-PB08	30965732	Pb	3.6	wt%	0.6	EPA 3050B/7000B
912-PB09	30965733	Pb	1.4	wt%	0.2	EPA 3050B/7000B
912-PB10	30965734	Pb	< 0.007	wt%	0.007	EPA 3050B/7000B
912-PB11	30965735	Pb	0.029	wt%	0.007	EPA 3050B/7000B

\* The Reporting Limit represents the lowest amount of analyte that the laboratory can confidently detect in the sample, and is not a regulatory level. The Units for the Reporting Limit are the same as the Units for the Final Results.



Kevin Poon, Laboratory Supervisor, Hayward Laboratory

Analytical results and reports are generated by SGS at the request of and for the exclusive use of the person or entity (client) named on such report. Results, reports or copies of same will not be released by SGS to any third party without prior written request from client. This report applies only to the sample(s) tested. Supporting laboratory documentation is available upon request. This report must not be reproduced except in full, unless approved by SGS. The client is solely responsible for the use and interpretation of test results and reports requested from SGS. SGS is not able to assess the degree of hazard resulting from materials analyzed. SGS reserves the right to dispose of all samples after a period of thirty (30) days, according to all state and federal guidelines, unless otherwise specified. Any modifications that have been made to referenced test methods are documented in SGS Standard Operating Procedures Manual. Sample results have not been blank corrected. Quality control and sample receipt condition were acceptable unless otherwise noted.

Note\* Sampling data used in this report was provided by the client as noted on the associated chain of custody form.



# LEAD BULK SAMPLE LOG

Oakland   
  Monterey   
  Anaheim   
  San Diego   
 20#2

CLIENT: PARC  
 SITE/LOCATION: 912 3rd St., Orland  
 SAMPLED BY: CB

DATE: 01/26/26  
 PROJECT NUMBER: 250036001  
 CDPH CERT. NUMBER: 0698

Sample Number	Sample Location	Component	Color	Substrate	Quantity (sf/lf/ea)
912-PB11	INTERIOR	FLOOR	GRAY	CONCRETE	DAMAGED
11 SAMPLES					

Analytical Method: Lead: Flame AA    TTLC    STLC    TCLP  
 Turnaround Time: Same Day    148 HR    3 day  
 E-Mail: chrisburns@vista-env.com    Phone: 925.348.5361  
 Special Instructions: \_\_\_\_\_

RECEIVED  
 FEB 02 2026  
 BY: MLC J 10FX

**CHAIN OF CUSTODY:**

1. [Signature] Relinquished By (Sampler): Signature    LUIS J. ROCHA Printed Name    01/27/26-0900 Dates Samples in Possession of Signer  
 2. \_\_\_\_\_ Transfer/Courier: Signature    \_\_\_\_\_ Printed Name    \_\_\_\_\_ Dates Samples in Possession of Signer  
 RLD 3. [Signature] Received by: Signature - Laboratory    Shirlysa Tieng Printed Name - Laboratory    1/30/26 935 FX Date Received  
 RLQ [Signature] Shirlysa Tieng 1/30/26 3PM FX