

HRB Direction Needed

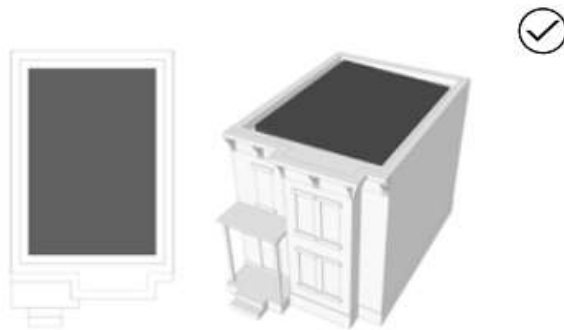
- Do you want to consider amending the HRB solar panel regulations to allow for more options for visible solar panels that comply with the HRB policies and can be processed as a type I building permit?
- Do you want to proceed with the outreach and adoption process as outlined by the staff, or do you want to revise the approach?



Work Plan Item #7 Improving the Historic Review Approval Process- Revisit HRB Policy #12 Solar Panels -

Installing Solar Collectors on a Historic Property

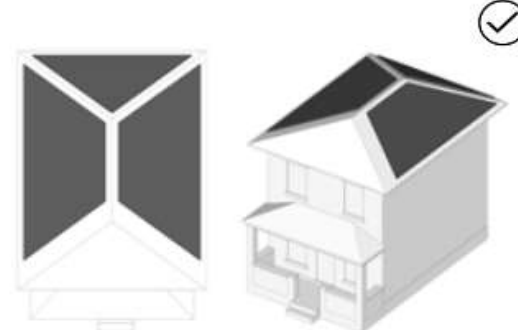
When installing solar collectors on a historic property, it is important to minimize visibility from the street and potential impacts on the historic character of the property. Below are examples of appropriate locations for solar panels on various roof forms.



SOLAR INSTALLATION ON A FLAT ROOF

Install solar panels in any configuration as long as the panels are entirely below the top of the parapet

Oregon City
Allowed as a Type I Review



SOLAR INSTALLATION ON A HIPPED ROOF

Install solar panels on side or rear slopes of roof and at least three feet back from the diagonal ridge at the front of the building

Oregon City
Requires Type III HRB Review



OC could
adopt larger
setback 5-10
feet.



City Of Denver –Examples

Installing Solar Collectors on a Historic Property

When installing solar collectors on a historic property, it is important to minimize visibility from the street and potential impacts on the historic character of the property. Below are examples of appropriate locations for solar panels on various roof forms.



OC could
adopt larger
setback 5-10
feet.



SOLAR INSTALLATION ON A FRONT GABLE ROOF

Install solar panels on side slopes of roof and at least three feet back from the front eave of the building

Oregon City
Requires Type III HRB Review



SOLAR INSTALLATION ON A SIDE GABLE ROOF

Install solar panels on rear slope of roof

Oregon City
Allowed as a Type I Review



City Of Denver –Examples

Installing Solar Collectors on a Historic Property

When installing solar collectors on a historic property, it is important to minimize visibility from the street and potential impacts on the historic character of the property. Below are examples of appropriate locations for solar panels on various roof forms.



SOLAR INSTALLATION ON A MANSARD ROOF

Install solar panels on side or rear slopes of roof. Solar panels may be installed on the low-slope at the front of the building (shown in gray hatch above) depending on visibility from the street.

SOLAR INSTALLATION ON A GAMBREL ROOF

Install solar panels on side slopes of roof and at least three feet back from the front eave of the building.

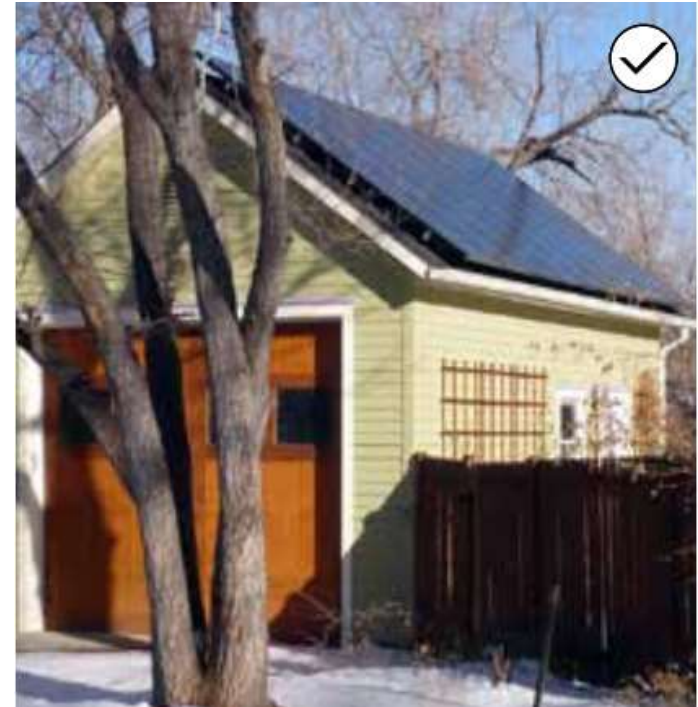
Figure 14: Solar Panel Installation

Oregon City
Requires Type III HRB Review

Oregon City
Requires Type III HRB Review



City Of Denver –Examples



Oregon City

Allowed as a Type I Review

Sloped roof location: Solar panels are permitted on secondary facades of historic buildings and on accessory structures



Work Plan Item #7 Improving the Historic Review Approval Process- Revisit HRB Policy #12 Solar Panels -