



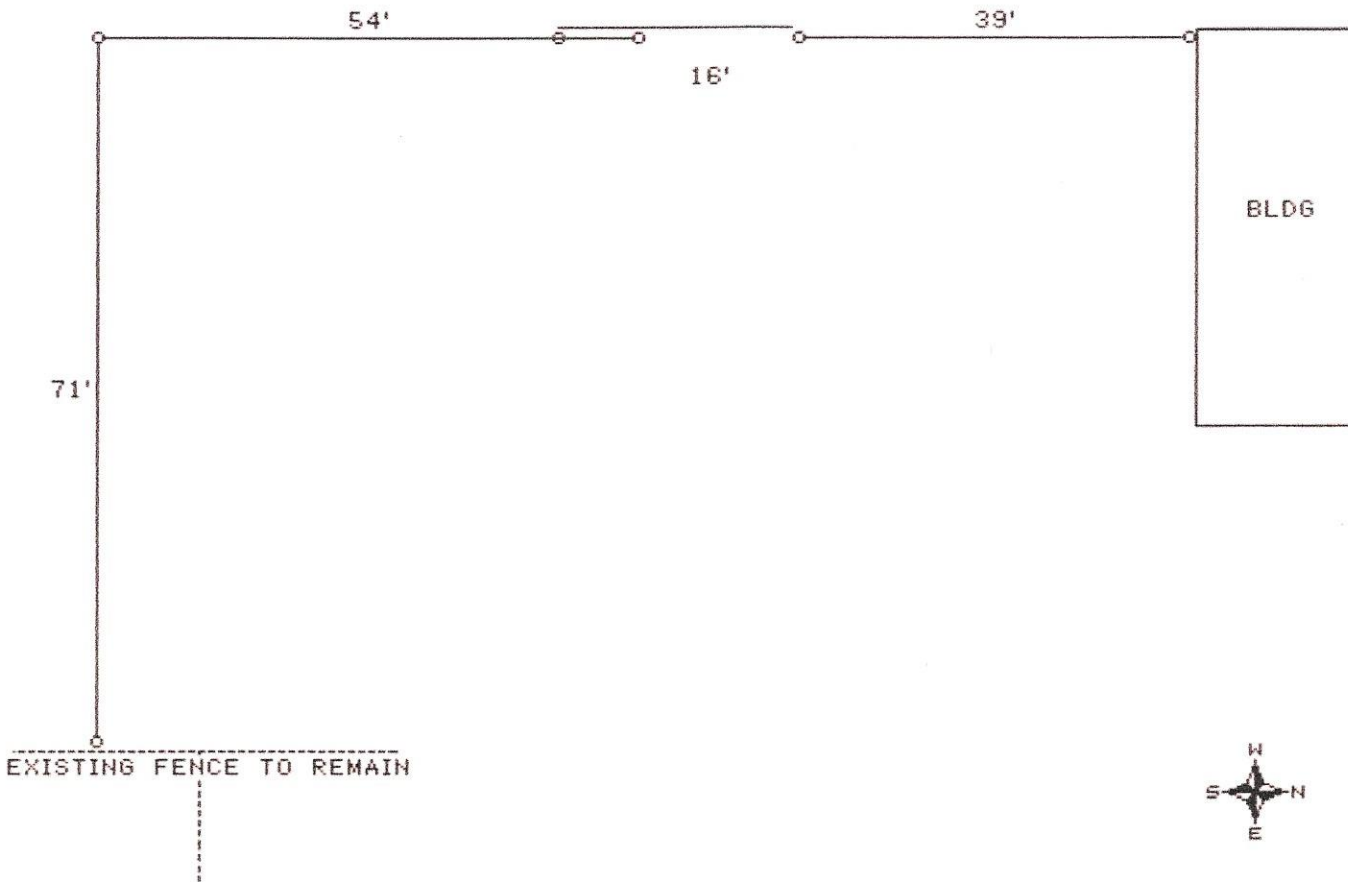
Miller FENCE CO.

Miller Fence & Flag Co., Inc.
1800 Burton Ave
Waterloo, Iowa 50703
(319) 291-6424

JOB SKETCH

CITY OF OELWEIN
PUBLIC WORKS
460 7TH AVE SW
OELWEIN, IOWA 50662

REMOVE PORTIONS OF EXISTING FENCE. INSTALL NEW 6' HIGH HEAVY COMMERCIAL GALVANIZED CHAIN LINK FENCE WITH AUTOMATED PIPE FRAME CANTILEVER GATE (POWER & COMMUNICATION WIRING TO BE SUPPLIED, INSTALLED & CONNECTED BY OTHERS AND IS NOT INCLUDED IN THIS PROPOSAL.)



ITEMIZED ESTIMATE

CITY OF OELWEIN
PUBLIC WORKS
460 7TH AVE SW
OELWEIN, IOWA 50662

REMOVE PORTIONS OF EXISTING FENCE. INSTALL NEW 6' HIGH HEAVY COMMERCIAL GALVANIZED CHAIN LINK FENCE WITH AUTOMATED PIPE FRAME CANTILEVER GATE (POWER & COMMUNICATION WIRING TO BE SUPPLIED, INSTALLED & CONNECTED BY OTHERS AND IS NOT INCLUDED IN THIS PROPOSAL.)

QTY.	SOURCE #	ITEM	AMOUNT
1	NONE	9150-380 DOORKING MODEL 9150 SLIDE GATE OPERATOR; 1 HP, 115 VAC /EA @ 4858.00 =	4858.00
1	NONE	9409-010 2-CHANNEL LOOP DETECTOR /EA @ 570.00 =	570.00
1	NONE	2600-495 BASE PLATE /EA @ 220.00 =	220.00
1	NONE	8080-070 CONTACT SAFETY EDGE 5' /EA @ 502.00 =	502.00
1	NONE	3028-50 2 CHANNEL RADIO RECEIVER @ 150.00 =	150.00
1	NONE	5166 ANTENNA KIT 18FT WITH F-CONNECTOR /EA @ 75.00 =	75.00
1	NONE	1601-154 DOORKING HEATER FOR 9150 @ 630.00 =	630.00
1	NONE	3022-10 EDGE TRANSMITTER @ 200.00 =	200.00
2	NONE	TSC #40 CHAIN 10' LONG @ 35.20 =	70.40
1	33041	4" X 8' DQ-40 PIPE POST @ 109.97 /Ea. =	109.97
4	33078	2 7/8" X 9' DQ-40 PIPE POST @ 77.95 /Ea. =	311.80
14	33056	2 3/8" X 8' DQ-40 PIPE POST @ 43.57 /Ea. =	609.98
2	33042	4" X 10'6" DQ-40 PIPE POST @ 131.31 /Ea. =	262.62
1	NONE	FABRICATION; WELD POST TO BASEPLATE /EA @ 65.00 =	65.00
2	NONE	TOURNIER CHAIN BRACKETS @ 44.80 =	89.60
1	NONE	TOURNIER CUSTOM LATCH @ 92.80 =	92.80
1	NONE	MISC. ELEC. CONDUIT AND CONNECTORS @ 65.00 =	65.00
2	NONE	IN GROUND LOOPS @ 450.00 =	900.00
6	NONE	3089-11 MULTI 1 BUTTON TRANSMITTER /EA @ 30.00 =	180.00
1	NONE	1515-080 SURFACE MOUNT KEYPAD /EA @ 508.00 =	508.00
1	NONE	GOOSENECK MOUNTING POST /EA @ 364.00 =	364.00
1	NONE	16' OPENING X 6'+ HT 2 3/8" DQ-40 PIPE CANTILEVER GATE (Gate Only) /EA @ 1601.98 =	1601.98
164	55417	72" 9 GA. GALVANIZED (2" Mesh) CHAIN LINK FABRIC @ 7.36 /Ft. =	1207.04
252	33005	1 5/8" DQ-40 PIPE @ 3.31 /Ft. =	834.12
15	10455	2 7/8" BEVELED BRACE BAND @ 1.98 /Ea. =	29.70
6	10304	2 3/8" REGULAR BRACE BAND @ 1.02 /Ea. =	6.12
7	10458	4" BEVELED BRACE BAND @ 2.16 /Ea. =	15.12
25	10255	2 7/8" BEVELED TENSION BAND @ 2.21 /Ea. =	55.25
5	10258	4" BEVELED TENSION BAND @ 2.80 /Ea. =	14.00
16	12506	1 5/8" PRESSED STEEL RAIL-END @ 2.21 /Ea. =	35.36
6	12507	1 5/8" PRESSED STEEL 2 HOLE RAIL-END @ 2.99 /Ea. =	17.94
6	13705	70" 3/16" X 3/4" TENSION BAR @ 7.25 /Ea. =	43.50
14	12254	2 3/8" X 1 5/8" PRESSED STEEL EYE-TOP @ 3.02 /Ea. =	42.28
4	11315	2 7/8" DIE-CAST ALUMINUM DOME CAP @ 2.67 /Ea. =	10.68
2	11608	4" PRESSED STEEL CAP @ 3.63 /Ea. =	7.26
6	12602	1 5/8" X 6" PRESSED STEEL SLEEVE @ 2.42 /Ea. =	14.52
75	23553	8 1/4" 9 GA. ALUMINUM TIE WIRE @ .18 /Ea. =	13.50
125	23552	6 1/2" 9 GA. ALUMINUM TIE WIRE @ .14 /Ea. =	17.50
58	10701	5/16" X 1 1/4" CARRIAGE BOLT @ .21 /Ea. =	12.18
6	17902	11' 3/8" TRUSS ROD @ 12.42 /Ea. =	74.52
6	18101	5 3/4" X 1" TRUSS ROD TIGHTENER @ 2.30 /Ea. =	13.80
1	NONE	CONCRETE /LS @ 1007.17 =	1007.17

QTY.	SOURCE #	ITEM	AMOUNT
4	18387	4" X 2 3/8" LOAD MASTER CANTILEVER GATE ROLLER @ 175.07 /Ea. =	700.28
MATERIALS TOTAL:			\$ 16607.99
LABOR TOTAL:			4059.00
TOTAL:			\$ 20666.99