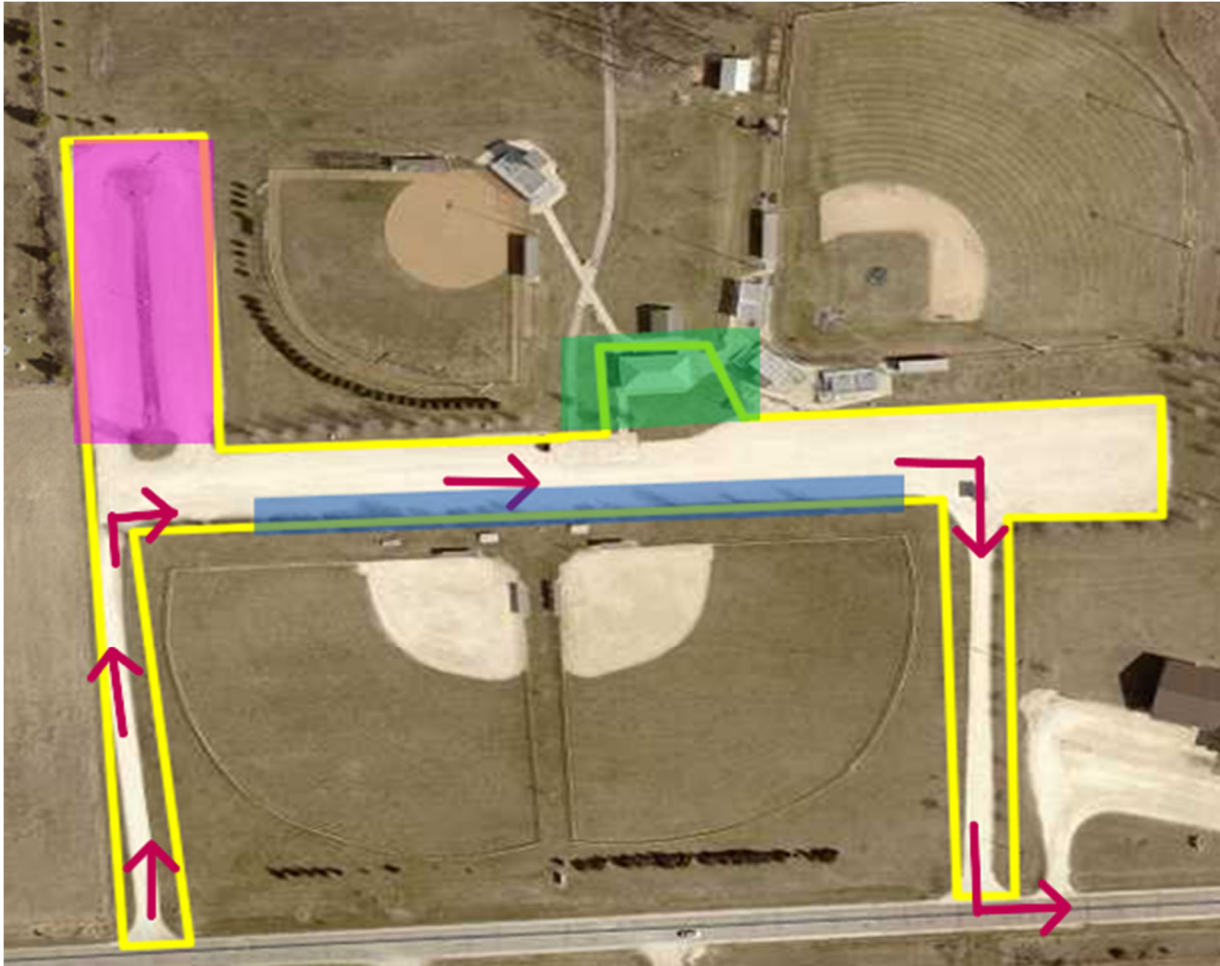


REGISTRATION



Campers will enter in from the west entrance and proceed through the parking lot as shown. They will exit the east entrance when finished. The concession stand will be used as well as erecting a tent. Inside the tent will be an area multiple people can sign in or register. Also, campers can fill their on-board water tanks. This will be used from Wednesday until Saturday.

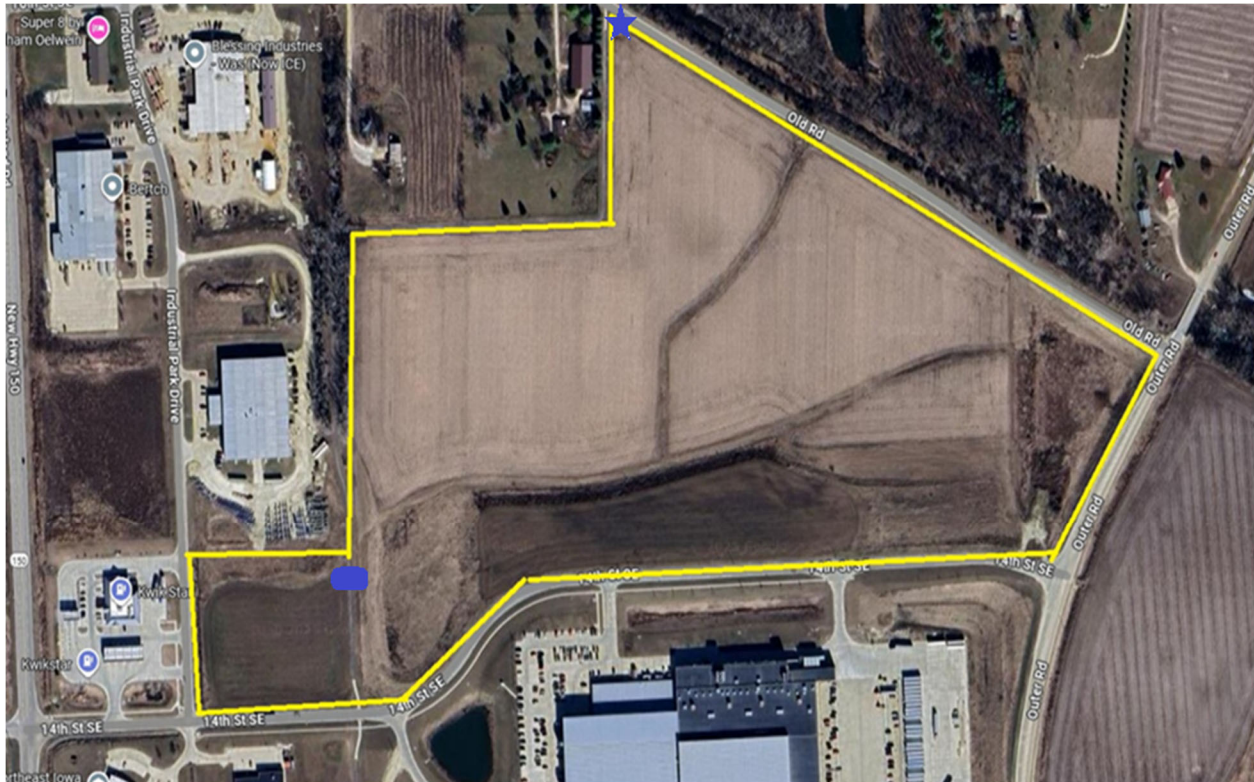
MAP KEY

GREEN – Registration area. This is where the tent would also need to be set up.

PINK – Overflow. If needed we can stage campers there as they come in.

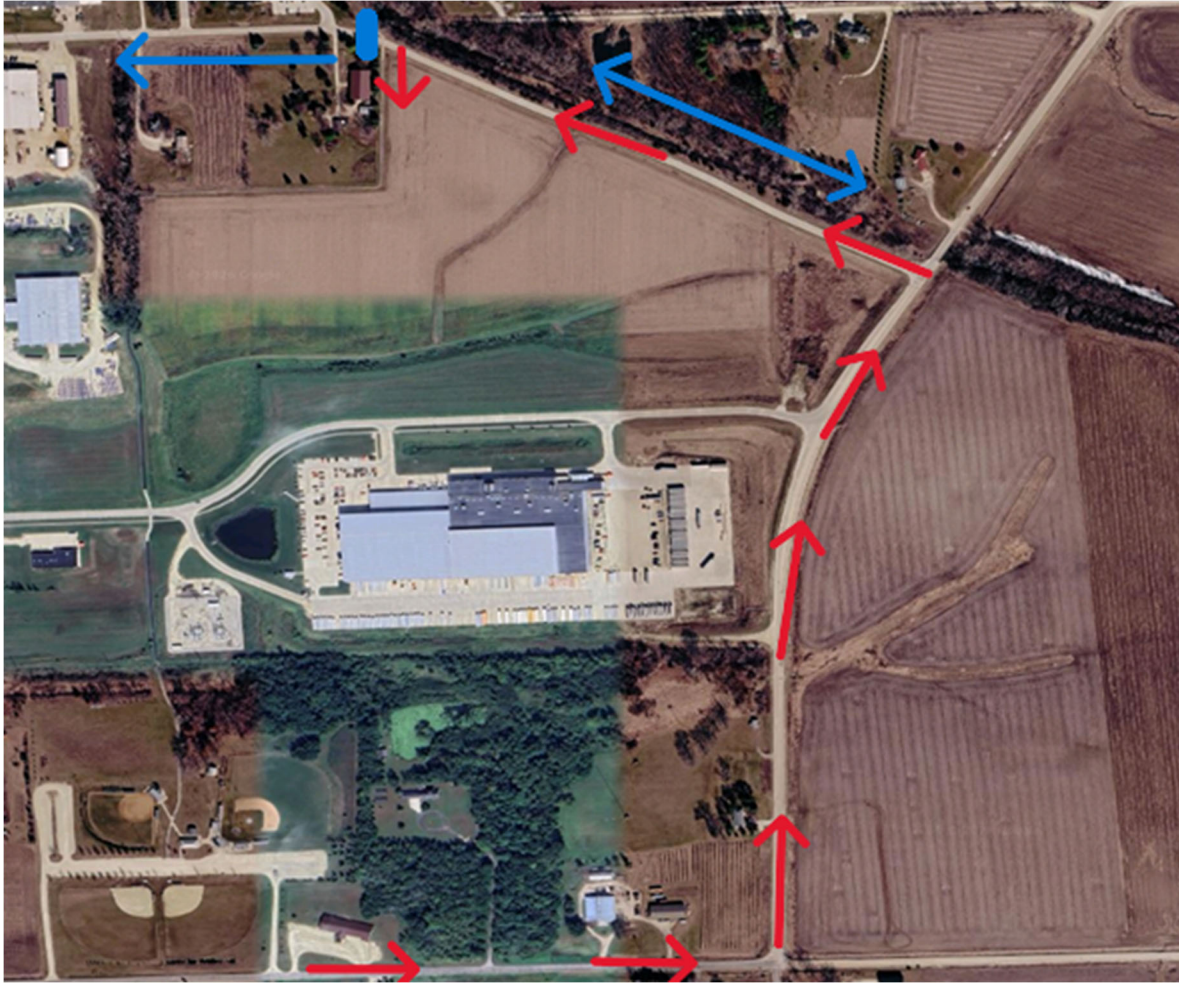
BLUE – Water Fill area for campers to fill on board water tanks.

CAMPGROUND



The Campground will be constructed on OCAD's property between Old Road and 14th Street Se. This area will be where participants will camp, attend entertainment and eat 2 catered meals. A power grid system will be designed and installed on this site. Alliant will run the power to the property line and a secondary company will be needed to install the power grid. After the 2028 convention, this will all be removed and returned to OCAD in the original condition. With the bike trail running through the middle of the property, this is why it would need closed to maintain safety and security of the event. The bike trail will have 1 designated crossing point (shown by blue box icon) to access the far west piece of property. The remaining bike trail will be closed off to keep golf carts and vehicles off. It is requested that the bike trail be closed from 10th Street to the sports complex. The entire border of the campground will be fenced off. The entrance will be staffed keeping anyone not registered for the event out. This is a security factor. (The entrance is marked with a star.) Committee members will also do random roaming patrols of the border to ensure compliance

Traffic Flow



The red arrows show how campers will come from the complex. This keeps campers from utilizing 14th St Se. This avoids and disruption to East Penn's operations. The blue arrows are the requested traffic flow change for the week of convention. Signage will be requested at a later date. The blue block is the point of traffic flow change.

CONTEST AREA



This area would be used on the Saturday of Convention for State Contest. This is a general area. Finalized plans would be presented to the council in the future. There are several contests that will be held during the day. IFA representatives will visit Oelwein a few months in advance to access the roadway conditions. By holding this event downtown, it will shut traffic down however, will be a great increase of foot traffic to the businesses and restaurants as event goers will patronize them. Also, it should be noted that in previous experience, the citizens of town will also come and spectate drawing more patrons into these businesses. It should also be noted that Non-profit groups and a few food trucks may set up near this event. This is still a work in progress however.