

Park and Cemetery Update:

PARKS / CEMETERY / TRAILS / AQUATICS / CAMPGROUND

STUMP WORK



8:39 AM

WINTERIZING



1:16 PM

STUMP GRINDING



8:30 AM

TREE PLANTING LOCATIONS



9:49 AM

BOARDS STAINED



1:10 AM

TRAILS SWEEP



2:26 PM

MAINTENANCE



11:34 AM

CITY PARK LEAVES



9:59 AM

WATER LINES



2:36 PM

BENCH INSTALLED



2:20 PM

TRAIL SWEEPING





TREE REMOVAL



CITY PARK LEAVES



TRAIL SWEEPING



WARTBURG PRESENTATION



AQUATICS



EQUIPMENT MAINTENANCE





3.4 Program Budget Description

Category	Item	Cost	Reasoning
Supplies	Trees	\$75,000	Add and replace trees in the urban forestry
Supplies	Water Fountains	\$50,000	Add and replace fountains throughout the city
Contractual	Grant Administration	\$25,000	Hire consultant to manage the grant administration
Construction	Playgrounds	\$1,000,000	To modify and revamp 3 City playgrounds
Construction	Solar Array Parking Lot	\$3,000,000	Reconstruct and add a solar array to a 1.5-acre asphalt parking lot
Construction	Urban Trail System	\$5,120,929	Complete all segments of the Urban Trail systems connecting the city
Construction	Splash Pad	\$500,000	Construct and add a sustainable splash pad
Construction	Pedestrian Crossings	\$3,310,000	Enhance 3 Pedestrian crossings connecting schools and the city
Construction	Park Model Cabins	\$400,000	Constructing 2-3 Sustainable Park Model Cabins
Other	Community Engagement	\$50,000	To provide transportation, childcare, and food options for community engagement and outreach events
10% de minimis rate		\$20,000	Based on non-construction items
	Total Cost:	\$13,550,929	



2024 OELWEIN TREES FOR KIDS PLANTING

2024

Project: Trees Forever Boulevard Tree Planting

Start Date: 08-15-2024

Estimated Cost: \$3000

Contractor: Manske Corner Market
Cannon's Greenhouse

Fund: Iowa DNR Trees for Kids

Status: Completed

Contract Completion Date: 10-02-2024

Completion Date: 10-02-2024

Actual Cost: \$2,995

Trees Planted - 23



Iowa Department of
Natural Resources



2024 OELWEIN TREES FOR KIDS PLANTING

PARKS / CEMETERY / TRAILS / AQUATICS / CAMPGROUND





2024 OELWEIN TREES FOR KIDS PLANTING

PARKS / CEMETERY / TRAILS / AQUATICS / CAMPGROUND





2024 OELWEIN TREES FOR KIDS PLANTING

PARKS / CEMETERY / TRAILS / AQUATICS / CAMPGROUND





2024 OELWEIN TREES FOR KIDS PLANTING

PARKS / CEMETERY / TRAILS / AQUATICS / CAMPGROUND





2024 OELWEIN TREES FOR KIDS PLANTING



City of Oelwein

Published by Joshua Johnson



October 3 at 7:40 AM

The Oelwein Tree Board was the recipient of the DNR "Trees for Kids" grant this year. Chip Murrow with the DNR, tree board members Kyle Scheel and John Fox, along with several high school students from **Oelwein Community Schools** with park employees assisted in planting trees at Wings Park yesterday. A variety of 24 trees purchased from **Cannon's Greenhouse & Corner Market and Greenhouse** were planted. Thanks to the Iowa DNR and everyone involved with this great project!



PARKS / CEMETERY / TRAILS / AQUATICS / CAMPGROUND



2024 OELWEIN TREES FOR KIDS PLANTING



DOWNLOAD OUR APP!

THURSDAY, OCTOBER 3, 2024 • www.oelweindailyregister.com

A lesson in forestry Wednesday



Iowa DNR Urban Forestry Specialist Chip Murrow taught the Oelwein pool employees how to properly plant a tree Wednesday as part of the Iowa DNR's Trees for Kids grant program. TAYLOR NOHRENBURG | Oelwein Daily Register

Pool, parks and rec plant 24 trees at Wings Park

By TAYLOR NOHRENBURG
reporter@oelweindailyregister.com

Oelwein's Parks and Rec and pool employees volunteered their time Wednesday at Wings Park to add 24 trees to help shade the ball diamonds and provide extra shade during the hot summer's heat.

Josh Johnson, parks superintendent, said the department received assistance from the Iowa Department of Natural Resources with the Trees for Kids grant to the tune of \$2,500 for 24 trees that will line two ball diamonds and a portion of the creek running through the park.

10:23 AM

"I have applied for this one for 5, 6 years and this is the first time I've got it," he said. "I'm pretty excited about that."

Around 10 Oelwein pool employees volunteered their time to plant the trees on a windy Wednesday. Iowa DNR Urban Forestry Specialist Chip Murrow and Oelwein Tree Board member Kyle Scheel were at Wings Park to demonstrate the proper way to plant the trees.

Holes were dug, posts were struck and mulch was left near holes for students to speed up planting. Water bags were also at each plant location for parks and rec employees to fill.

Ashlyn Sauser and her team of three other sophomores were quick learners when it came to planting.

"It was great, I'd call us pros," Sauser said, adding it wasn't difficult to learn to plant. "They taught us very well... call us pro foresters!"

June Bahe, part of Sauser's tree squad, also said her experience was much the same in that the trees were easy to plant.

"I like planting trees, it makes my heart feel good and it's pretty simple," she said, adding onto Sauser's comment.

See PARK, page A2



June Bahe (second from left) and her team said that the squad of four are "pro foresters" following Wednesday's planting at Wings Park. TAYLOR NOHRENBURG | Oelwein Daily Register

PARK Continued from A1

Container trees were purchased from both Corner Market and Greenhouse

of Oelwein and Cannon's Greenhouse of Westgate for under \$3,000 and supplied the remaining funds with matched dollars. A mixture of oak, Ginkgo and tulip trees were purchased to

vary species.

"We have a Trees Forever planting in two weeks," Johnson said. "The tree board guys have been going around and finding locations."

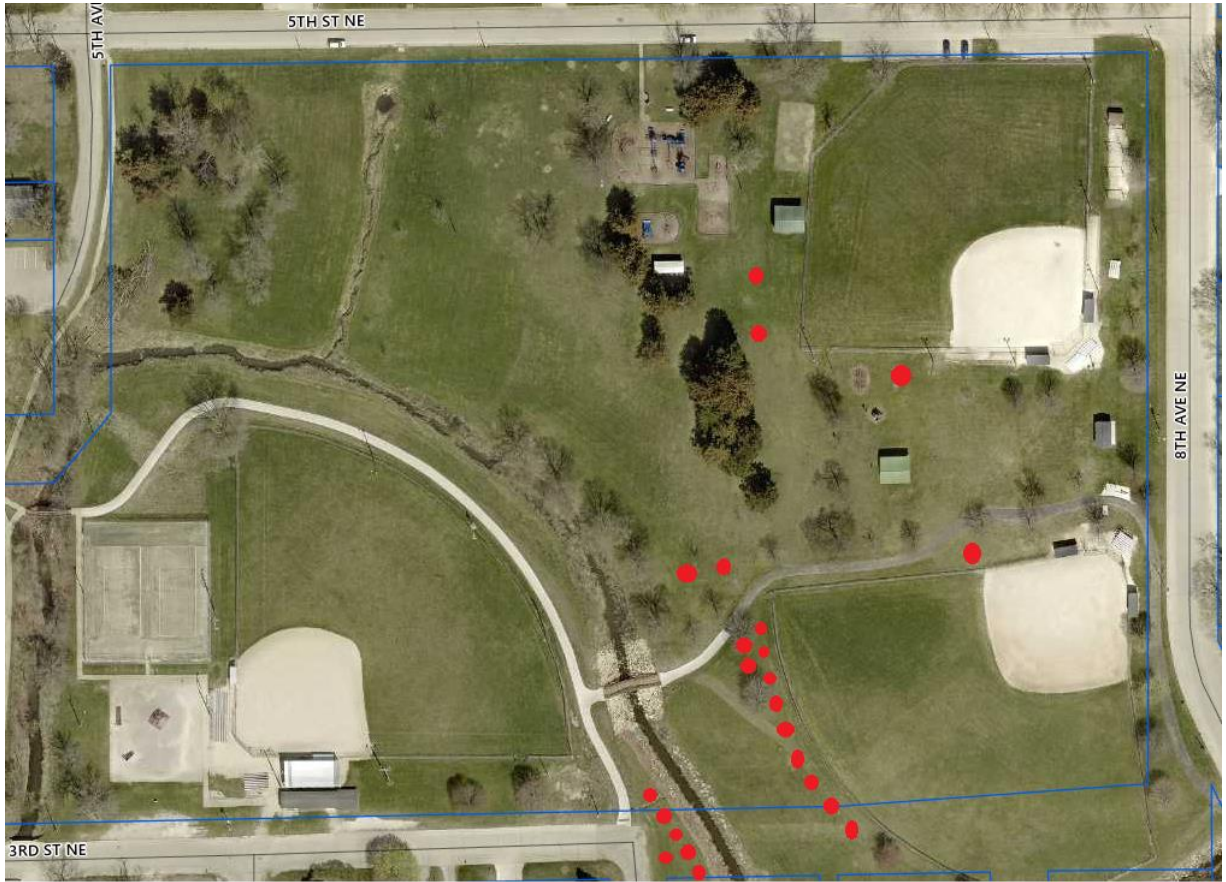
"We are happy we got the grant from the DNR and are grateful for all our Tree Board members," Johnson said. "They do great planting demonstrations and we are lucky to have them."



2024 OELWEIN TREES FOR KIDS PLANTING

PARKS / CEMETERY / TRAILS / AQUATICS / CAMPGROUND

LOCATIONS





2024 OELWEIN ONE MILLION TREES INITIATIVE PLANTING

2024

Project: Trees Forever Boulevard Tree Planting

Start Date: 10-16-2024

Estimated Cost: \$5000

Contractor: Manske Corner Market

Cannons Greenhouse

Fund: Trees Forever

Status: Completed

Contract Completion Date: 10-16-2024

Completion Date: 10-16-2024

Actual Cost: \$7,221.00

Trees Planted – 45





2024 OELWEIN - ONE MILLION TREES INITIATIVE PLANTING FACEBOOK PROMOTION



City of Oelwein
Published by Joshua Johnson
· 5 days ago ·

Congrats to the Oelwein tree board on receiving the [Trees Forever/ Alliant Energy](#) - One million Trees grant once again this year. Today 45 trees including 12 different varieties were planted throughout the community. Thanks to everyone that helped make today a great success!

- [Alliant Energy](#) - Devin Wever
- [Trees Forever](#) - Brianna Hull, Deb Roman
- [Corner Market and Greenhouse](#)
- [Cannon's Greenhouse](#)
- Tree board members - Jeff Milks, Kyle Scheel, Ron Lenth, John Fox & Terry Scherbring
- [East Penn Manufacturing Co.](#)
- Park and rec commission - Joe Bouska
- [Oelwein Community Schools](#) - Kim Lawless & Bethany Pierson
- [Scheel's Professional Lawn Care](#)
- Park and cemetery staff / administration
- [Oelwein Daily Register](#)



See insights and ads

Boost post

Alliant Energy, Oelwein Community Schools and 30 others

4 comments 6 shares

Like

Comment

Share



2024 OELWEIN - ONE MILLION TREES INITIATIVE PLANTING FACEBOOK PROMOTION

PARKS / CEMETERY / TRAILS / AQUATICS / CAMPGROUND

Corner Market and Greenhouse
5 days ago · 🌐

Good things are happening in Oelwein! And we love to be a part of it!! Thanks to everyone one that helped, especially Josh Johnson and his CREW!!!



City of Oelwein
Published by Joshua Johnson
· 5 days ago · 🌐

Congrats to the Oelwein tree board on receiving the **Trees Forever/ Alliant Energy** - One million Trees grant once again this year. Today 45 trees including 12 di... See more

👍❤️ 29

2 shares

👍 Like

💬 Comment

➦ Share



Trees Forever

9h · 🌐

⋮ ✕

The best time to start building a tree canopy is... now! This week the Oelwein, Iowa Tree Board planted areas of town lacking in tree cover utilizing trees purchased through an **Alliant Energy** Community Tree Planting Program grant. It was fun joining in with the volunteers that also included local high school students, Alliant representatives, city workers, and landscaping professionals. A real community effort!



Messenger

Contact Trees Forever

📧 Send message

👍❤️ Alliant Energy and 16 others

1 share



2024 OELWEIN - ONE MILLION TREES INITIATIVE PLANTING

PARKS / CEMETERY / TRAILS / AQUATICS / CAMPGROUND





2024 OELWEIN - ONE MILLION TREES INITIATIVE PLANTING

PARKS / CEMETERY / TRAILS / AQUATICS / CAMPGROUND





DOWNLOAD OUR APP!

THURSDAY, OCTOBER 17, 2024 • www.oelweindailyregister.com

See 5

Trees, trees and... more trees



TAYLOR NOHRENBERG | Oelwein Daily Register

Wednesday's tree planting group consisted of members from Parks and Rec, the Tree Board, East Penn Manufacturing, community members, Oelwein students and others.

Parks and Rec strengthens Oelwein's residential canopy

By TAYLOR NOHRENBERG
reporter@oelweindailyregister.com

A chilly morning, some glazed donuts and the positive energy of around 35 people wanting to better their community would be what some passersby would see when driving or walking past groups of two or three planting trees Wednesday morning.

Thanks to a \$5,000 grant from the Iowa Trees Forever Project, around 44 trees of various types were planted Wednesday, Oct. 16, with the assistance of high schoolers, Parks and Rec department employees, Scheel's Professional Lawn Care employees, some East Penn Manufacturing workers and Tree Board members. This is in addition to two other seasonal plantings, bringing the grand tree total to 109 trees within the last two months alone.

Josh Johnson, Oelwein parks superintendent, coordinated the day to have several groups travel around Oelwein to various

homes to plant trees following a 13 tree planting at Ashley Moulding and Northeast Iowa Community College's RAMS Center. Homeowners were contacted by Tree Board members to arrange the other 31 trees to be planted in street boulevards in Oelwein's southwest/southeast and the northeast quadrants.

In partnership with Alliant Energy's One Million Trees initiative, the grant provided funds for the purchase of trees from Corner Market and Greenhouse in Oelwein and Cannon's Greenhouse in Westgate. Many trees lost to the Emerald Ash Borer have been replaced, if not duplicated, by the efforts of the Parks and Rec department and the Tree Board.

Alliant Energy Customer Solutions Specialist Devin Wever said that he is grateful for the work Oelwein's Parks and Rec provides.

"I thank the City of Oelwein, city staff and volunteers that came out today on the brisk October morning to help plant trees

that will help reduce energy consumption and countless other benefits to the town," he said. "Alliant Energy is proud to offer our Community Tree Planting program as part of our One Million Trees initiative that grants communities up to \$5,000 for tree plantings that promote energy savings by shading and cooling from sun and wind. We are proud to partner with Trees Forever to help guide the communities to select diverse tree species and educate on proper care and planting to ensure longevity of the tree canopy for future generations and energy savings."

The group was also joined by City Administrator Dylan Mulfinger.

"The work that Joshua Johnson and his crew have put in to make sure Oelwein has a healthy urban canopy is incredible," he said. "Future generations will benefit from this work."

In fact, Johnson has been the key figure

See TREES, page A2



TAYLOR NOHRENBERG | Oelwein Daily

Ron Lenth (yellow) and Jeff Milks, Oelwein Tree Board members, demonstrate proper planting technique. Milks added that planting trees is one simple way to combat climate change.

TREES

Continued from A1

in writing and applying for grants, making purchases and organizing plantings. Many grants have been awarded to Johnson and his

team, and that work has not gone unnoticed. Oelwein has been recognized for the Tree City USA award for 23 years and the Tree City USA Growth Award for six.

The Oelwein Tree Board consists of John Fox,

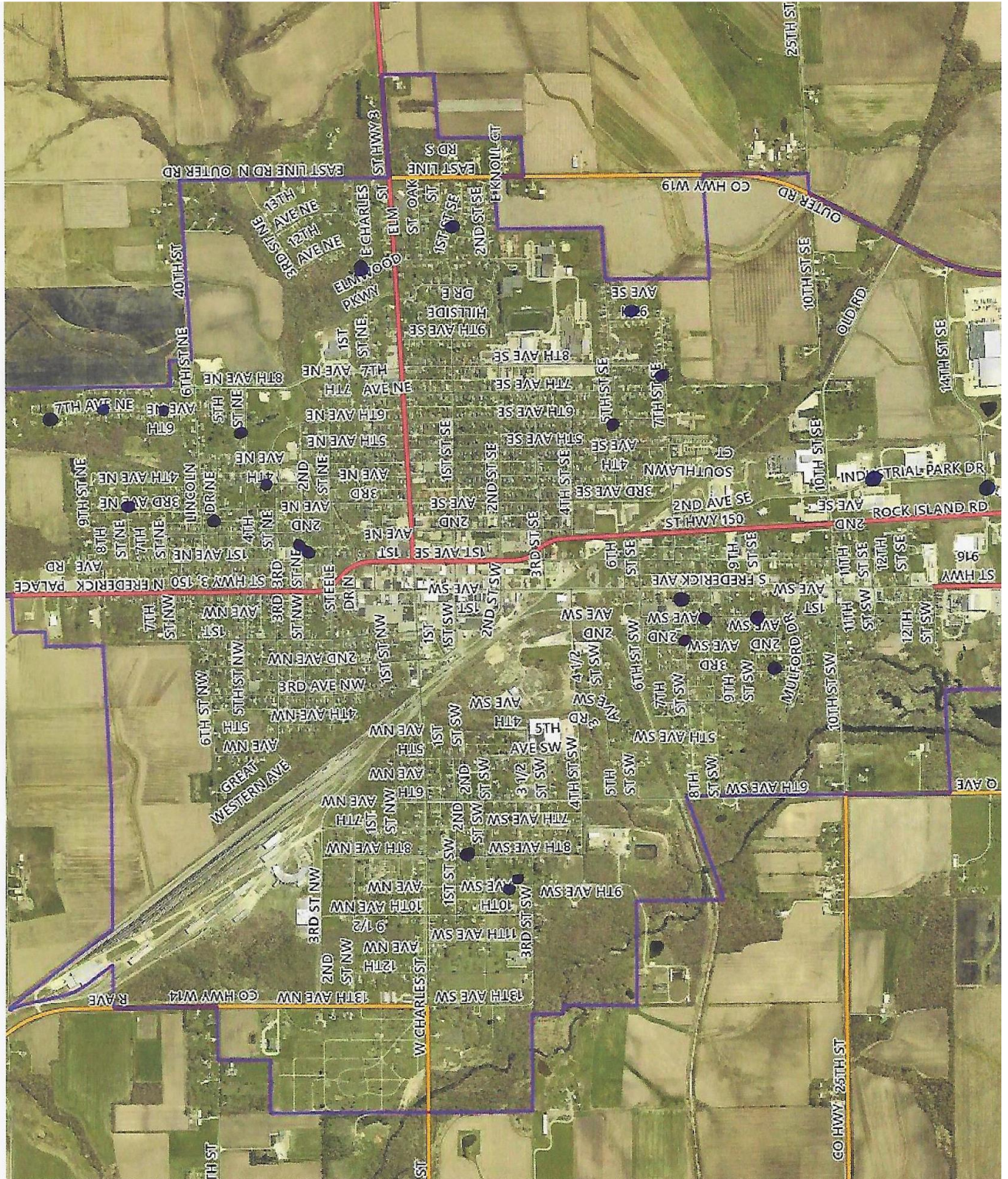
Johnson, Ron Lenth, Jeff Milks and Kyle Scheel. A planting demonstration was given by Milks and Lenth that morning.

Milks talked about how planting a tree can change how much a home uses energy, increases property

values and can help the environment by sequestering carbon. He explained during the planting demonstration that if a tree is planted incorrectly, then it may only live for 10-15 years, so planting correctly is essential for growth.

LOCATIONS

PARKS / CEMETERY / TRAILS / AQUATICS / CAMPGROUND





2024 OELWEIN - ONE MILLION TREES INITIATIVE PLANTING

LOCATIONS

PARKS / CEMETERY / TRAILS / AQUATICS / CAMPGROUND

2024						
Location	Owner	Tree 1	Tree 2	Tree 3	Tree 4	Tree 5
Group 1						
705 7th St. SE	Ron Luckerth	Cherry				
508 9th Ave SE	Jacob Hartwell	Aspen				
1301 1st St. SE	Barbara Fogarty	Magnolia				
628 S Frederick Ave.	Sacred Heart Church	Aspen				
205 7th St. SW	Nancy Bradshaw	Magnolia				
720 1st Ave SW	Jason Harper	Linden	Linden			
906 1st Ave SW	Sean Emery	Cherry				
917 3rd Ave SW	Dave King	Gingko				
723 1st St. SW	Westside Church	Hophornbeam	Tulip	Cherry	Cherry	
239 9th Ave SW	Denise Baker	Linden				
224 9th Ave SW	Lee Bormann	Honeylocust				
511 5th St. SE	Sharm Samuelson	Aspen				
951 2nd Ave SE	Ashley Moulding	Catalpa	Linden	Tulip	Honeylocust	Hophornbeam
1401 Technology Dr. SE	RAMS	Multiple	Catalpa	Magnolia	Gingko	Catalpa
			Hackberry	Tulip	Chery	Gingko
			Tulip			
Group 2						
302 2nd Ave NE	Brett Mahoney	Honeylocust				
120 3rd St. NE	Brad Dolf	Gingko				
408 4th Ave NE	Richard Wright	Yellow wood				
601 5th St. NE	Buzzy Bush	Elm				
601 2nd Ave NE	Dave Scharnhorst	Elm	Honeylocust			
801 3rd Ave NE	Jamie Jacobs	Aspen	Cherry			
625 7th Ave NE	Jim Tafolla	Elm				
731 7th Ave NE	John Klink	Elm				
910 7th Ave NE	Jeremiah Bratten	Elm	Cherry	Aspen		
1103 1st St. NE	Nick Wenner	Honeylocust				



TREE CITY USA®



TREE CITY USA®



TRAILS UPDATE:

PARKS / CEMETERY / TRAILS / AQUATICS / CAMPGROUND



IOWA DEPARTMENT OF NATURAL RESOURCES

LEADING IOWANS IN CARING FOR OUR NATURAL RESOURCES



FY2025 REAP City Parks Open Spaces - MEDIUM CITIES - Population between 2,000 and 25,000

Applicant Organization Name	Quality of Site/Project (3)	Relationship to State, Regional, Local Plans (4)	Environmental Benefits (2)	Public Benefit Served (2)	Local Support (2)	Public Communications Plan (1)	Total Score	Grant Amount	Grant Award
City of Sac City	21.6	27.2	17.2	15.2	14.4	6.8	102.4	\$75,000	\$75,000
City of Bondurant	19.2	25.6	12.4	14.4	15.2	6.4	93.2	\$100,000	\$100,000
City of Eldora	19.2	28	10	12	15.6	8	92.8	\$75,000	\$75,000
City of Oelwein	20.4	25.6	10.8	13.6	14	6.6	91	\$100,000	\$100,000
City of Estherville	18.6	25.6	10	12.8	14.8	7.2	89	\$100,000	\$100,000
City of Forest City	19.2	25.6	9.6	12.8	14	7	88.2	\$75,000	\$75,000
City of Perry	19.8	26.4	10.8	12.4	11.6	5.8	86.8	\$100,000	\$100,000
City of Newton	21.6	26.4	10.8	14.4	7.6	5	85.8	\$125,000	\$125,000
City of Burlington	17.4	23.2	10.4	12.8	12.8	7.8	84.4	\$95,500	\$95,500
City of Maquoketa	16.2	27.2	8.4	12.4	12	7	83.2	\$100,000	-0-
Medium City Total								\$945,500	\$845,500

*Red line denotes if REAP were fully funded at \$20 million, this and all projects above would have received full or partial funding.



2025 CONSTRUCTION – PENDING SIGNED AGREEMENT

PARKS / CEMETERY / TRAILS / AQUATICS / CAMPGROUND



SEGMENT 2 TRAIL
1.29 MILES
CITY OF OELWEIN



FEHR GRAHAM
ENGINEERING & ENVIRONMENTAL

APRIL 28, 2022

ILLINOIS
IOWA
WISCONSIN

© 2021 FEHR GRAHAM



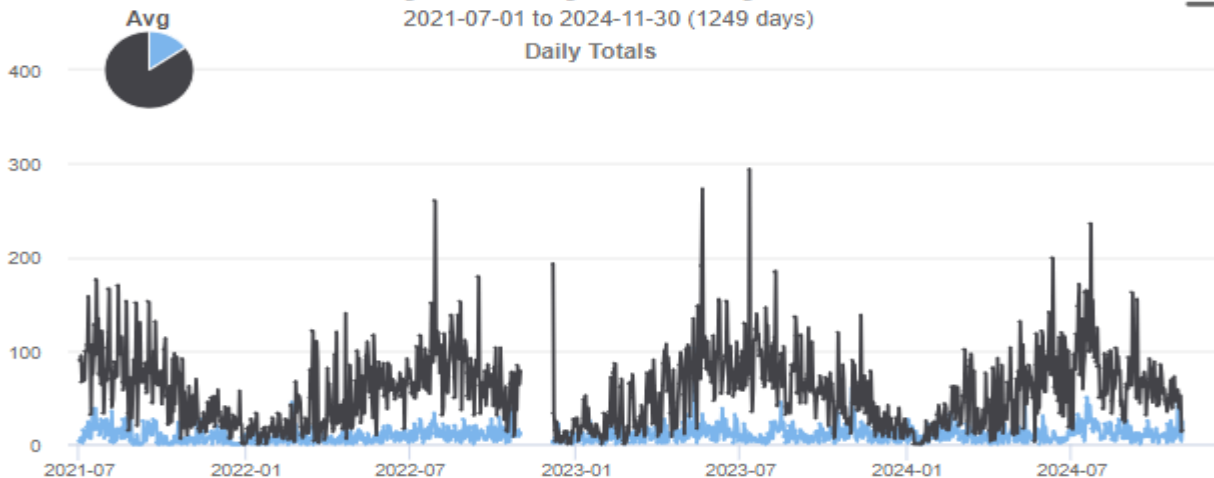


TRAIL COUNTS

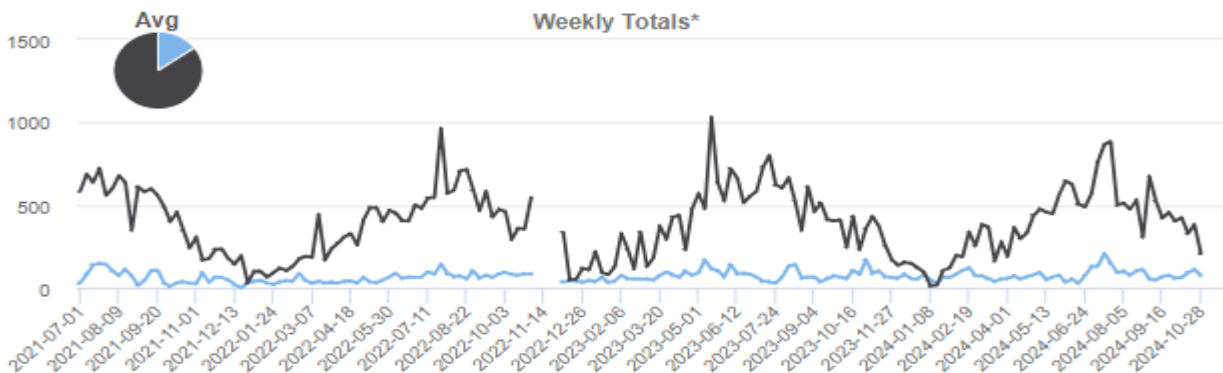
Daily/Weekly/Monthly totals

2021-07-01 to 2024-11-30 (1249 days)

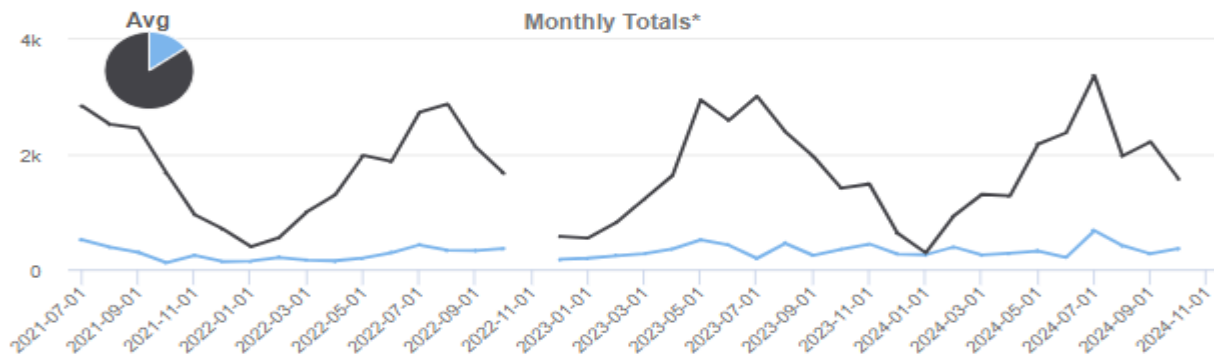
Daily Totals



Weekly Totals*



Monthly Totals*



■ Arlington Place Oelwein ■ Platt Park Oelwein

Master Summary

Download as Excel CSV

Year	Site	Jan	Feb	Mar	Apr	May	Jun	Jul	Aug	Sep	Oct	Nov	Dec	ADT†	ADT†x365	Days with data
2021	Arlington Place Oelwein							512*	388	294	115	242	134	9.115	3,327	183
	Platt Park Oelwein							2,845*	2,523	2,458	1,675	950	704	60.454	22,066	183
2022	Arlington Place Oelwein	146	207	158	148	199	290	426	332	327	362		173*	8.303	3,031	330
	Platt Park Oelwein	394	548	1,002	1,297	1,984	1,877	2,736	2,877	2,127	1,672		572*	51.497	18,796	330
2023	Arlington Place Oelwein	193	235	274	356	510	421	190	451	241	347	441	266	10.753	3,925	365
	Platt Park Oelwein	543	816	1,229	1,635	2,948	2,592	3,013	2,399	1,969	1,411	1,485	628	56.625	20,668	365
2024	Arlington Place Oelwein	254	389	247	279	319	208	673	414	269	360			11.187	4,094	305
	Platt Park Oelwein	287	930	1,305	1,276	2,181	2,378	3,373	1,972	2,223	1,571			57.364	20,995	305

ADT† = Average Daily Traffic

* = based upon that month's ADT [Learn more](#) Indicates months with less than 6 days of data.



City of Oelwein Camping Registration Comparison

PARKS / CEMETERY / TRAILS / AQUATICS / CAMPGROUND

	2007	2008	2009	2010	2011	2012	2013	2014	2015	2016	2017	2018	2019	2020	2021	2022	2023	2024
March						9			9					COVID				
April	34	7	7	55	1	68		12	36	29	20	41	25		2	156	238	126
May	239	267	273	224	289	403	419	420	246	353	354	586	1365	128	392	464	840	386
June	332	369	585	494	633	489	455	590	404	493	695	723	396	289	474	407	464	496
July	349	404	285	379	421	613	782	444	496	336	628	472	504	220	414	347	762	610
August	240	380	287	459	478	403	448	358	561	578	950	767	473	236	432	613	770	503
September	384	457	235	231	309	429	623	477	420	407	512	207	368	123	408	336	540	403
October	103	109	69	64	106	149	125	61	227	247	285	82	57	52	44	67	148	79
November						28	9	9	14	10	30							
December						21					15							
Occupancy Rate	27%	31%	28%	30%	36%	42%	46%	39%	39%	39%	56%	46%	51%	17%	34%	38%	60%	42%
TOTALS	1681	1993	1741	1906	2237	2612	2861	2371	2413	2450	3479	2878	3188	1048	2166	2390	3762	2603

Woodlawn Cemetery

- 28 full burials
- 22 cremations
- 1 infant transfer

Shelter Reservations

➤ 63



DAILY ACTIVITIES

- CLEAN/ORGANIZE SHOP AREAS
- PICK UP DOWNTOWN AREAS
- MAINTAINING PARK, CEMETERIES
- MAINTENANCE OF EQUIPMENT
- SAFETY MEETINGS
- SWEEPING TRAILS/STREETS/SKATE PARK
- MEET WITH CONTRACTORS
- RETRIEVE & UPLOAD TRAIL COUNT DATA
- WOODLAWN BURIALS
- PARK MAINTENANCE
- GRANT WORK

PROGRESS ON PROJECTS

- WEBSITE UPDATING
- TRAIL EASEMENTS/GRANTS
- PARK AND REC MASTER PLAN
- TRAIL MAINTENANCE
- GRINDING STUMPS
- CIVICREC WORK
- WOODLAWN WATERWAY CLEANED
- PLAYGROUND MAINTENANCE
- DEAD TREE REMOVAL
- FOUNDATIONS POURED
- PLAYGROUND SLIDES – CITY PARK
- TREES FOREVER TREE PLANTING COMPLETED
- TREES KIDS TREE PLANTING COMPLETED
- FINISHED WINTERIZING POOL
- TRIMMED DOWNTOWN
- WINTERIZE CAMPGROUND FOR WINTER
- PIRILLO BENCH INSTALLED
- MSA GRANT SUBMITTED

NEXT MONTH AND FUTURE PROJECTS

- REPURPOSE OLD WINGS BRIDGE
- GRANT WRITING
- TRAIL SEGMENT 2
- TRAIL SEGMENTS 4/5 ALIGNMENT
- PAINT ACCENT BRICK – POOL
- PLANT TREES IN CHRYSLER PARK
- BOARD AND COMMITTEE MEETINGS
- FLAGPOLE DIAMOND
- BUDGET AND FEES
- LAU AND CLASS OF 81' BENCH INSTALLATION

JOSHUA JOHNSON MA
OELWEIN PARK SUPERINTENDENT





Budget Cuts

Over the next three years:

Pool - \$15,000 / \$5k year

Cemetery - \$10,000 /\$3.3K year

Campground - \$5,000 /\$1,650 year

Parks - \$30,000 / \$10k year



**2025 FEES: PARK DEPARTMENT
COMPARABLE PRICING AND PROPOSED CHANGES
Aquatics**

American Red Cross / Group Lessons

Municipality (Population)	Length of Class	Length of Classes	Registration Fees	Number of Classes	Number of Sessions
City of Charles City (7344)	30 Min.	2 Weeks	\$25	8	2
City of Clear Lake (7687)	40 Min.	2 Weeks	\$32	8	3
City of Decorah (7587)	30 Min.	2 Weeks	\$35	8	3
City of DeWitt (5514)	40 Min.	2 Weeks	\$45	8	9
City of Fairbank (1111)	40 Min.	2 Weeks	\$35	8	-
City of Grinnell (9564)	30 Min.	1 Month	\$35	6	Year Round
City of Independence (6166)	40 Min.	2 Weeks	\$35	8	3
City of Manchester (5065)	40 Min.	2 Weeks	\$40	8	4
City of Nevada (6925)	40 Min.	2 Weeks	\$35	8	4
City of New Hampton (3478)	40 Min.	1 Week	\$40	8	2
City of Oelwein (5804)	40 Min.	2 Weeks	\$35	8	3
City of Vinton (4931)	40 Min.	2 Weeks	\$35	8	2
City of West Union (2956)					
Average			\$35.58		

RECOMMEND LEAVE AT \$35.00



Private Lessons

Municipality (Population)	Length of Class	Length of Classes	Registration Fees
City of Charles City (7344)	-	-	-
City of Clear Lake (7687)	-	-	-
City of Decorah (7587)	30 Min.	1 Week	\$85
City of DeWitt (5514)	30 Min.	1 Week	\$60
City of Fairbank (1111)	40 Min.	-	\$15 per / \$75
City of Grinnell (9564)	-	-	-
City of Independence (6166)	40 Min.	2 Weeks	\$15
City of Manchester (5065)	40 Min.	2 Weeks	\$80
City of Nevada (6925)	-	-	\$35
City of New Hampton (3478)	-	1 Week	\$25
City of Oelwein (5804)	40 Min.	1 Week	\$60
City of Vinton (4931)	40 Min.	1 Week	\$65
City of West Union (2956)	-	-	-
Averages			\$55.55

Recommended leave at \$60

www.oelweinparks.org



Season Passes

PARKS / CEMETERY / TRAILS / AQUATICS / CAMPGROUND

Municipality (Population)	Single	Family 2	Family 3-4	Family 5-6	Family 7-8	Family 9+	Senior/ Lap/Nanny	Family	Youth
City of Charles City (7344)	\$75.00	\$130.00	\$140.00 \$150.00	\$160.00 \$170.00	\$180.00 \$190.00	\$200.00 \$210.00			
City of Clear Lake (7687)	\$65.00	\$85.00	\$110.00	\$130.00	\$150.00	\$170.00	\$55.00		
City of Decorah (7587)	\$95.00	\$170.00	\$195.00 \$215.00	\$240.00 \$265.00	\$290.00	\$290.00	\$85.00		
City of DeWitt (5514)	\$60.00						\$91.00	\$126.00	\$35.00
City of Fairbank (1111)	\$75.00							\$150.00	
City of Grinnell (9564)	\$80.00					\$200.00	\$70.00	\$200.00	
City of Independence (6166)	\$75.00						\$10.00	\$130.00	
City of Manchester (5065)	\$75.00	\$130.00	\$140.00 \$150.00	\$160.00 \$170.00	\$180.00 \$190.00	\$190.00	\$60.00		
City of Nevada (6925)	\$60.00	\$115.00	\$145.00 \$170.00	Add \$25.00		\$295.00	\$50.00		
City of New Hampton (3478)	\$100.00	\$165.00	\$185.00	\$205.00	\$225.00	\$225.00			
City of Oelwein (5804)	\$85.00	\$140.00	\$160.00 \$180.00	\$200.00 \$220.00	\$240.00	\$240.00	\$60.00		\$40.00
City of Vinton (4931)	\$70.00	\$140.00	\$140.00	\$150.00	\$160.00	\$160.00	\$35.00		
City of West Union (2956)	\$100.00	\$170.00	\$180.00 \$190.00	\$200.00 \$225.00	\$250.00	\$250.00	\$60.00		\$50.00
Averages	\$78.08	\$138.33	\$155.00 \$165.56	\$182.22 \$194.44	\$209.37 \$211.87	\$223.00	\$57.10	\$151.50	\$41.66

Passes Sold 2024:

Single <6	Single >6	x2	x3	x4	x5	x6	x7+	Nanny
\$40.00	\$85.00	\$140.00	\$160.00	\$180.00	\$200.00	\$220.00	\$240.00	\$60.00
3	35	28	28	35	32	13	3	1
(178)								

10 - Punch Cards \$50.00 6+
10 - Punch Cards \$20.00 >6



City of Oelwein Pool Pass

Guidelines: Season passes are non-transferable and are used only by the patron(s) assigned. Immediate family members are those individuals who are family members and who live at the same residence (**maximum of two adults**) are eligible for a family pass. Children on a family pass must be under the age of 21 (maximum of four) and related to one or both the household adults as offspring or by marriage, adoption, foster care placement or legal guardianship.

Childcare Provider Pass MUST be purchased in addition to a Family Pass. Childcare provider must be at least 16 years old. The pass can only be used when the childcare provider attends the pool with the children. **\$60.00**

Instructions: Family Pass - fill out completely. **Single Pass** - If the pass is for a minor (under 18 yrs. old), put guardian name for main contact and youth name under "3. Child". If the pass is for an adult, fill out "Main Contact Information".

Main Contact Information

Main Contact Name _____

Street Address/City _____

#1 Phone _____ #2 Phone _____

Email _____

1. While engaging/observing in this activity, I/we bear full responsibility for any loss or theft of personal items 2. I/we release any photographs and/or videos taken during the activity to be used by the City of Oelwein 3. In the event of injury or illness, I give my permission for program staff to provide on-site first aid for minor injuries and for licensed physicians to provide necessary emergency medical services if I am unable to provide consent at the time of injury. I agree to assume all costs related to any such medical treatment. I authorize the disclosure of medical information to my insurance company for the purpose of this claim.

Signature of Parent/Guardian _____ **Date:** _____

First & Last Name Birthdate Relationship

1. Youth: _____ **Youth Pass \$40.00 5 & Under**

1. Adult: _____ **Single Pass \$85.00**

2. Adult: _____ **2 Members \$140.00**

3. Child: _____ **3 Members \$160.00**

4. Child: _____ **4 Members \$180.00**

5. Child: _____ **5 Members \$200.00**

6. Child: _____ **6 Members \$220.00**

7. Child: _____ **7 Members \$240.00**

Childcare provider: _____

\$60.00 First & Last Name Birthdate Phone Number Home Address

Office Only

Paid: _____ Date Paid: _____ City Hall Initials: _____

Payment Type: Check Cash Credit Card Pool Pass #: _____



Daily Admissions

Municipality (Population)	Infant	Student	Adult	Senior	Lap Swim
City of Charles City (7344)	\$2.00 0-5	\$3.00 6-17	\$4.00 18+	-	-
City of Clear Lake (7687)	Free 0-3	\$4.00 3+	\$4.00	\$4.00	\$3.00 (Free with Pass)
City of Decorah (7587)	Free 0-3	\$6.00 4-64	\$6.00 4-64	\$5.00 65+	NA
City of DeWitt (5514)	\$3.00 0-5	\$4.00 6-12	\$6.00 13+	\$6.00	NA
City of Fairbank (1111)	\$5.00	\$5.00	\$5.00	\$5.00	NA
City of Grinnell (9564)	NA	\$6.00 3+	\$6.00	\$5.00	\$5.00
City of Independence (6166)	\$5.00 0-5	\$5.00 5-18	\$5.00 18+	\$5.00	NA
City of Manchester (5065)	Free 0-2	\$3.00 3-5	\$5.00 6+	\$5.00	\$5.00
City of Nevada (6925)	Free 0-1	\$5.00 2-3	\$6.00 4-54	\$5.00 55+	NA
City of New Hampton (3478)	Free 0-3	\$7.00	\$7.00	\$5.00	NA
City of Oelwein (5804)	\$5.00 0-6	\$5.00 7-17	\$5.00 18+	\$5.00	\$5.00
City of Vinton (4931)	\$3.00 0-4	\$5.00 5-54	\$5.00 5-54	\$2.00	\$3.00
City of West Union (2956)	\$3.00 0-2	\$6.00	\$6.00	\$6.00	\$6.00
Averages	\$2.16	\$4.92	\$5.38	\$4.83	\$4.50

Recommend leave at \$5.00



Pool Rentals

Municipality (Population)	1-50	51-100	101-150	151-200
City of Charles City (7344)				
City of Clear Lake (7687)	\$175	\$175	\$225	\$225
City of Decorah (7587)	\$125	\$250	\$375	\$500
City of DeWitt (5514)	\$214ph	\$214ph	\$214ph	\$214ph
City of Fairbank (1111)	\$165	\$165	\$165	\$165
City of Grinnell (9564)	25-75 \$250	76-150 \$300	76-150 \$300	\$350
City of Independence (6166)	Shelter Rental \$10hr + Admission	Shelter Rental \$10hr + Admission	Shelter Rental \$10hr + Admission	Shelter Rental \$10hr + Admission
City of Manchester (5065)	-	-	-	-
City of Nevada (6925)	\$250/75 min.	\$250/75 min.	\$250/75 min.	\$250/75 min.
City of New Hampton (3478)	-	-	-	-
City of Oelwein (5804)	1 Hour \$200	1 Hour \$200	2 Hours \$275	2 Hours \$275
City of Vinton (4931)	\$150/hr	\$150/hr	\$150/hr	\$150/hr
City of West Union (2956)	\$175	\$200	\$225	\$250
Averages	\$181.55	\$208.22	\$228.22	\$254.88

2024 – 18 rentals

Recommend leave at:

1-hour 2-hours

\$200 \$275



Campground Rates / Park Fees

Campground				
Description	Detail	Current Amount	# Purchased this season	Proposed Change
			2024	
Tent Site	Primitive	\$15.00-max stay 4 consecutive days	186	\$20.00
	Supplementary to RV site	\$6.00	59	\$10.00
61 & under	30 Amp sites – Daily	\$25.00	12	\$25.00
	30 Amp sites – Weekly	\$100.00 (\$12.14 a day)	22	\$100.00
	30 Amp sites – Monthly (30 Days)	\$320.00 (\$10.33 a day)	6	\$320.00
61 & under	50 Amp sites - Daily	\$30.00	6	\$30.00
	50 Amp sites - Weekly	\$110.00	144	\$130.00
	50 Amp sites – Monthly (30 Days)	\$345.00 (\$11.16 a day)	21	\$345.00
Sr. 62+	30 Amp sites – Daily	\$20.00	20	\$20.00
	30 Amp sites – Weekly	\$95.00 (\$11.42 a day)	25	\$95.00
	30 Amp sites – Monthly (30 Days)	\$305.00 (\$9.83 a day)	22	\$305.00
	50 Amp sites – Daily	\$25.00	8	\$25.00
	50 Amp sites – Weekly	\$110.00 (12.85 a day)	126	\$120.00
	50 Amp sites – Monthly (30 Days)	\$325.00 (10.83 a day)	35	\$335.00
Kayak/Paddleboard	One Hour Per Kayak/PB	\$10.00	2	\$10.00
	Four Hours Per Kayak	\$35.00		\$35.00
	Two or more for four hours per kayak	\$30.00		\$30.00
Box of Wood		\$5.00	27	\$5.00
Shelter Rental	Capacity 60-100	\$30.00	70	\$30.00
Shelter Rental (Railroad shelter at City Park & new shelter at Platt's)	Capacity 200	\$30.00		\$30.00
Memorial Benches	Grey Stone with Plaque	\$1,500	4	\$2,000



Area Campgrounds

PARKS / CEMETERY / TRAILS / AQUATICS / CAMPGROUND

	Lakeshore	Fontana/ Jakway	Gilbertson/ Gouldsburg	Decorah Pulpit	Morewood	Independence	Backbone	Average
Tent	\$30.00	\$20	\$15	\$21	\$26	\$7	\$15	\$19.14
Daily	\$40.00	\$28	\$20	30amp \$36 50amp \$38	\$39	\$30	\$33	\$32.29
Weekly	\$215.00					\$135		\$175
Weekends					\$41			\$41
Monthly	\$525.00					\$350		\$437.50
Cabin		\$95			\$65		\$100 to \$150	\$95
Extra Person	\$5.00							\$5.00



Cemetery Rates

PARKS / CEMETERY / TRAILS / AQUATICS / CAMPGROUND

Cemetery			Per Remains
Description	Detail	Current Amount	Proposed Change
Grave Openings			
Regular Season			
Grave Opening	Weekday opening (Apr 1-Nov 30)	\$700.00	\$1,100.00
Grave Opening	Infant grave (Apr 1-Nov 30)	\$200.00	\$400.00
Grave Opening	Holidays/Saturdays (Apr 1-Nov 30)	\$900.00	\$1,300.00
Grave Opening	After hours (Apr 1-Nov 30)	\$850.00	\$1,300.00
Cremation Opening Per Individual	Cremation (Apr 1-Nov 30) Per Individual	\$300.00	\$550.00
Cremation Opening Per Individual	Holidays/Sat. cremation (Apr 1-Nov 30) After Hours Per Individual	\$450.00	\$650.00
Cold Weather Season			
Grave Opening	Weekday opening (Dec 1 –March 30)	\$800.00	\$1,300.00
Grave Opening	Infant grave (Dec 1 –March 30)	\$300.00	\$500.00
Grave Opening	Holidays/Saturdays (Dec 1 –March 30)	\$950.00	\$1,500.00
Grave Opening	After hours (Dec 1 –March 30)	\$900.00	\$1,500.00
Cremation Opening Per Individual	Cremation (Dec 1 –March 30) Per Individual	\$400.00	\$650.00
Cremation Opening Per Individual	Holidays/Sat. cremation (Dec 1 –March 30) After Hours Per Individual	\$500.00	\$750.00
Continuation on Weekdays	Any continuation of services keeping city crews after 3:30 PM (weekdays all year)	\$100 per hour	\$150 per hour
Late Notice Fee for All Burials		\$300.00	\$500.00
Grave Spaces			
Grave Space	Regular space	\$300.00	\$600.00
	Memorial section	\$250.00	\$350.00
	Infant lot	\$150.00	\$300.00
Interment Certificate	(formerly "Deed")	\$25.00	\$25.00
State Audit Fee		\$10.00	\$10.00
Exchange Grave Spaces		\$50.00	\$100.00
Foundations			
Foundations	Per running ft. (\$100 min)	\$80.00	\$90.00
Veterans	Per running ft. - 4' max	\$40.00	\$45.00
Disinterment / Reinterment			
Disinterment of a casket		\$800.00	\$1,400.00
Reinterment of a casket		\$600.00	\$1,400.00
Disinterment of a cremation vault		\$250.00	\$1,200.00
Reinterment of a cremation vault		\$250.00	\$1,200.00
Disinterment of an infant casket		\$175.00	\$1,000.00
Reinterment of an infant casket		\$175.00	\$1,000.00



Fairbank cemetery fees

Weekday burial	\$875
Weekday cremation	\$475
Sat. full burial	\$1,100
Sat. cremation	\$550
Sunday burial	\$1,350
Sun. cremation	\$750
Holiday burial	\$1,500
Holiday cremation	\$900

Iowa Funeral Directors Association:

The average cost of a funeral service in Iowa is \$13,125 (effective October 1, 2017).

47410	Burials		Full Burials	Cremations		
		2018	38	15		
		2019	41	23		
		2020	38	28		
		2021	31	14		
		2022	35	26		
		2023	34	26		
		Ave.	36.166667	22		
		2024*	26	19		
		Cost	\$1,100x35	\$550x26		
		Total	\$38,500.00	\$14,300.00	Total	\$52,800.00
47400	Grave Spaces			26.6666	\$600x27	\$16,200.00
41860	Foundations			175'	\$90x175	\$15,750.00
43000	Interest					\$5,000.00
					Rev	\$89,750.00
					Exp.	\$90,700.00