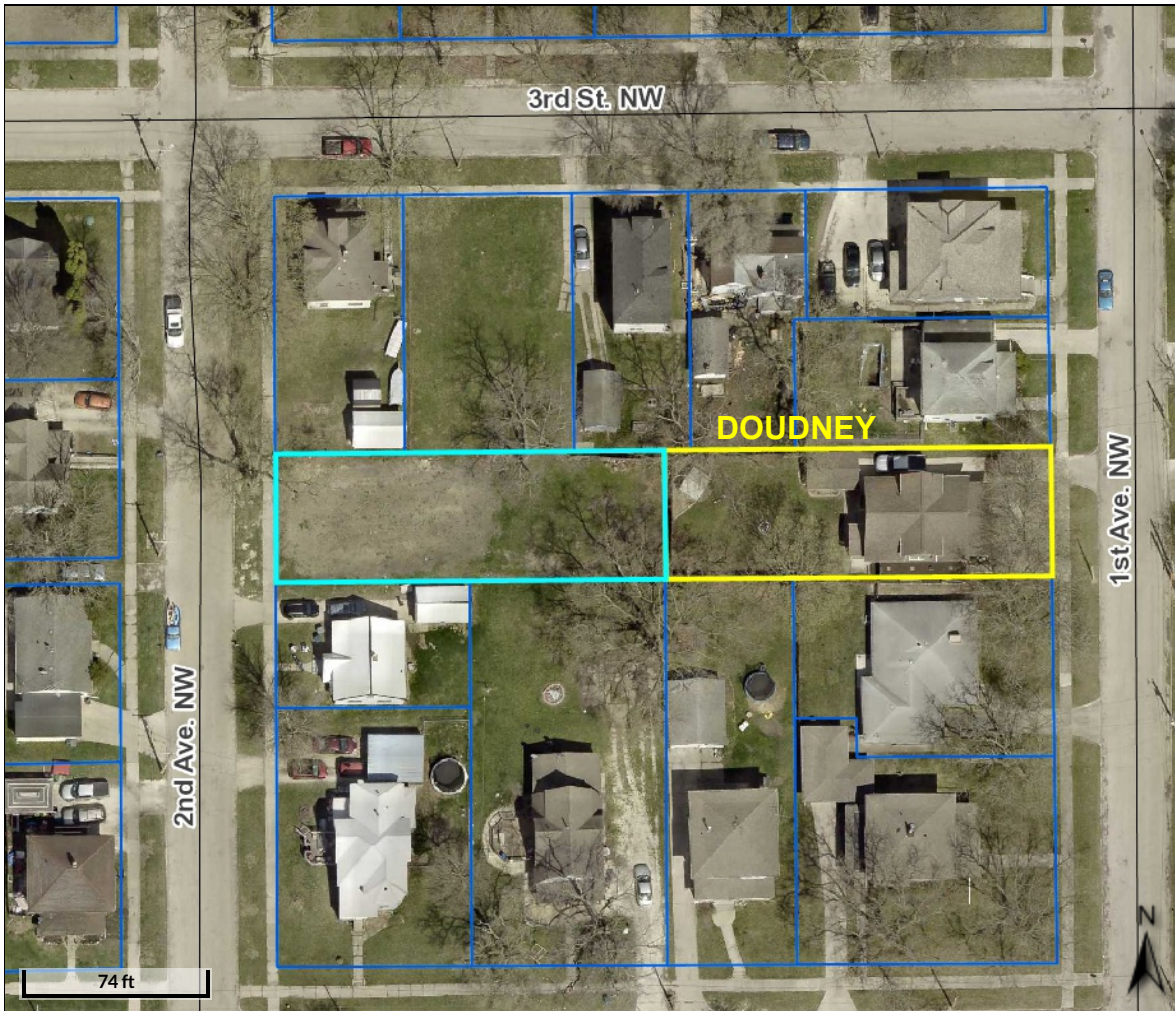
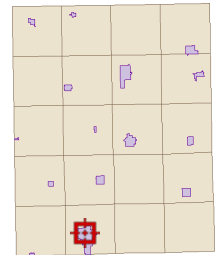










217 2nd Ave NW



**Overview**



**Legend**

-  Corporate Limits
-  Surveys
-  Survey Lines
-  Parcels
- Major Highways**
-  County Highway
-  Federal Highway
-  State Highway
-  Roads

<b>Parcel ID</b>	1821177001	<b>Alternate ID</b>	n/a	<b>Owner Address</b>	Oelwein, City Of
<b>Sec/Twp/Rng</b>	21-91-9	<b>Class</b>	R		City Hall 20 2nd Ave. SW
<b>Property Address</b>	217 2ND AVE. NW	<b>Acreage</b>	n/a		Oelwein, IA 50662-
	OELWEIN				
<b>District</b>	OELWEIN OELWEIN INC				
<b>Brief Tax Description</b>	S 50' LOTS 1,2,3				
	BLK 3				
	MARTINS 3RD ADD				
	<b>(Note: Not to be used on legal documents)</b>				

*Disclaimer: Fayette County, the Fayette County Assessor and their employees make every effort to produce and publish the most current and accurate information possible. The maps included in this website do not represent a survey and are compiled from official records, including plats, surveys, recorded deeds, and contracts, and only contain information required for government purposes. See the recorded documents for more detailed legal information. Data is provided in "as is" condition. No warranties, expressed or implied, are provided for the data herein, its use or its interpretation. Fayette County and its employees assume no responsibility for the consequences of inappropriate uses or interpretations of the data. Any person that relies on any information obtained from this site does so at his or her own risk. All critical information should be independently verified. If you have questions about this site please contact the Assessor's Office at (563) 422-3397.*

Not all Surveys that are recorded in Fayette County are portrayed in this online map. Always refer to the Fayette County Records Office for all recorded Surveys.

Not all Surveys that are recorded in Fayette County are portrayed in this online map. Always refer to the Fayette County Records Office for all recorded Surveys.