



PARKS / CEMETERY / AQUATICS / CAMPGROUND / TRAILS

Park and Recreation

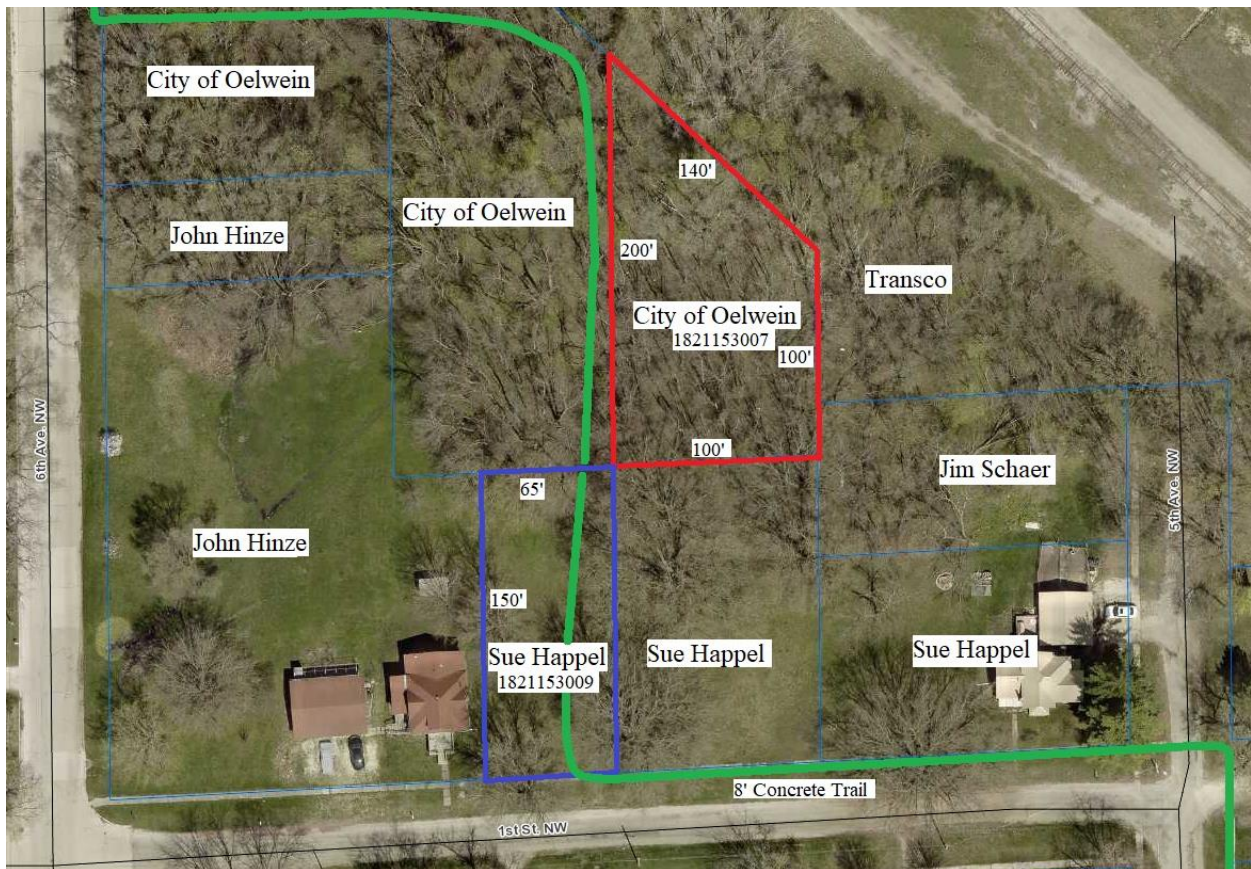
www.oelwein.fun

MEMORANDUM

TO: Oelwein City Council - Mayor Brett DeVore - City Administrator Dylan Mulfinger

SUBJECT: Property swap for trail segment 2

The trails committee has exhausted all options with all the surrounding neighbors to create trail segment two through this area in the northwest. The final viable option is to swap City owned parcel 1821153007 (highlighted in red) with Matt & Sue Happel that own parcel 1821153009 (highlighted in blue.) The committee has talked with the Happel's several times about different options with easements and this is the option that the Happels' are willing to consider. The 8' wide concrete trail will run approximately along the green line as shown on the map below.



Joshua Johnson MA
Oelwein Park Superintendent

