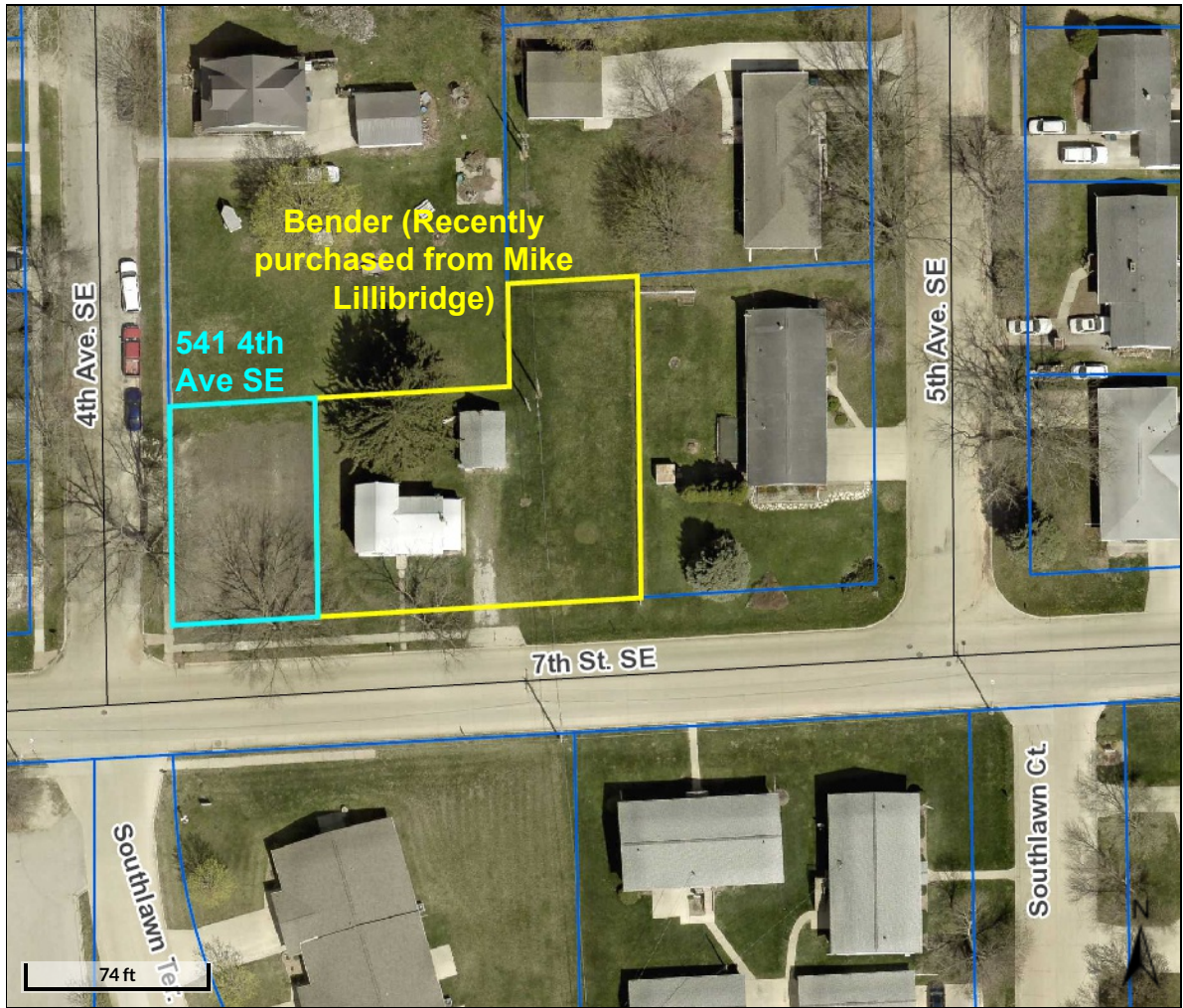
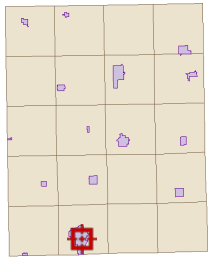


541 4th Ave SE



Overview



Legend

-  Corporate Limits
-  Parcels
- Major Highways**
-  County Highway
-  Federal Highway
-  State Highway
-  Roads

Parcel ID	1828227009	Alternate ID	n/a	Owner Address	Oelwein, City Of
Sec/Twp/Rng	28-91-9	Class	R		City Hall 20 2nd Ave. SW
Property Address	541 4TH AVE. SE	Acreeage	n/a		Oelwein, IA 50662-
	OELWEIN				
District	OELWEIN OELWEIN INC				
Brief Tax Description	COM 198' E & 550' S OF NW COR NENETH E 56 1/2' S 85' W 56 1/2' N TO BEG <span style="color: red;">(Note: Not to be used on legal documents)</span>				

*Disclaimer: Fayette County, the Fayette County Assessor and their employees make every effort to produce and publish the most current and accurate information possible. The maps included in this website do not represent a survey and are compiled from official records, including plats, surveys, recorded deeds, and contracts, and only contain information required for government purposes. See the recorded documents for more detailed legal information. Data is provided in "as is" condition. No warranties, expressed or implied, are provided for the data herein, its use or its interpretation. Fayette County and its employees assume no responsibility for the consequences of inappropriate uses or interpretations of the data. Any person that relies on any information obtained from this site does so at his or her own risk. All critical information should be independently verified. If you have questions about this site please contact the Assessor's Office at (563) 422-3397.*

Date created: 9/9/2021  
Last Data Uploaded: 9/9/2021 8:47:27 AM