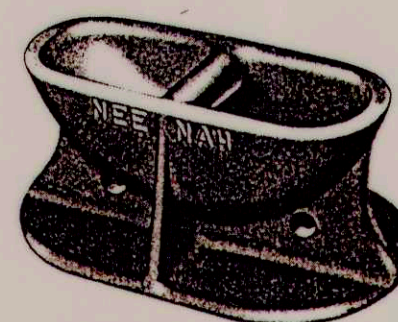


Airport Mooring Eyes

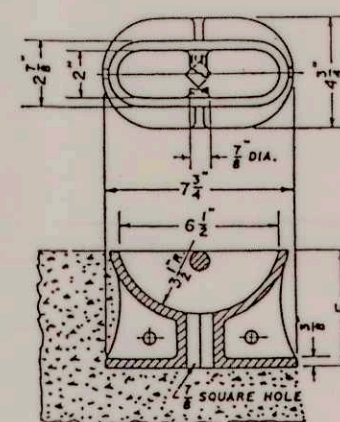
Mooring Eye is placed on subgrade and filled with sand to exclude concrete during the pouring and finishing operation. Sand is easily washed out when paving is completed. Opening at bottom of Eye is socket for wood or metal stake to bring Eye to grade. Square socket design prevents displacement while concrete is being poured and, if required, the hole provides drainage to the subgrade after Eye is in place. Alternative method of setting is to push the Eye in position in the wet concrete. Both methods are approved.

When used with bituminous slab, the Eyes should be set in concrete base before paving. Design permits in-flowing of concrete, and wide base insures proper anchorage. Ribs have 1/2-inch holes for reinforcing rods, if needed.



Catalog No.	"F"	Wt. lbs
R-3490	3 1/2"	7
R-3490-A	6 "	13

Also available in Ductile Iron.



ANTENNA POLE

TERMINAL

FUEL TANK FILL HOLE

FUEL TANK VENT STACK

DOUBLE FUEL PUMP

HEADER

HANGAR

SAW CUT PAVEMENT AND MEET EXISTING ELEVATION

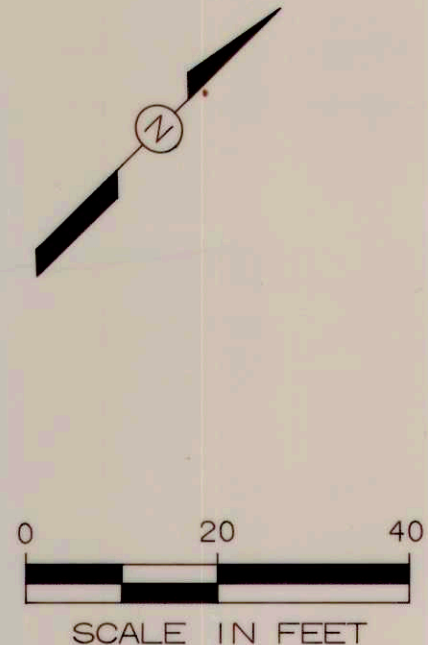
HANGAR

REVOLVING WIND CONE

ELECT.

NOTE: IRREGULAR SHAPED AREAS TO BE REINFORCED WITH W4 x W4 WELDED WIRE FABRIC 12" EACH WAY OR EQUIVALENT AREA OF STEEL. (TYP.) (REINFORCING INCIDENTAL TO PORTLAND CEMENT CONCRETE PAVEMENT)

WIND SOCK



ENGINEERS
ARCHITECTS
SCIENTISTS

Donohue

RUNWAY 13-31 REHABILITATION
OELWEIN MUNICIPAL AIRPORT
I.D.O.T. PROJECT NO. 17-0067-0005
TERMINAL APRON PAVEMENT JOINT LAYOUT

Sheet No. 19 of 24

Off. Loc. File No.

Project No. 50589.000

Drawing No.