



## PARKS / CEMETERY / AQUATICS / CAMPGROUND

Park and Recreation

Oelwein.fun

**FROM:** Joshua Johnson MA Parks Superintendent

**TO:** City Administrator Dylan Mulfinger – Mayor Brett Devore – Oelwein City Council

**SUBJECT:** Red Gate Park Shelter / Bathroom Upgrade & Woodlawn Cemetery Improvements

**DATE:** 04-23-2020

### Tornado 3-28-2020

On March 28<sup>th</sup> the City had an EF-1 tornado touch down in Red gate Park and Woodlawn Cemetery that had sustained winds of 107 MPH. With the insurance reimbursement that the City received from this event (\$105,661.53), the City would like to complete the following projects.

#### **Shelter replacement/modern bathroom**

The main shelter in Redgate Park was 50' x 21', which had a large ash tree fall on it. We would like to replace the shelter using the existing concrete slab, moving the support pillars to the outside of the concrete pad opening up the area to utilize better. On the west end of the shelter, we would like to add a modern bathroom with running water that would be under that same roof as the shelter. The bathroom would measure 12' x 21' with the doors facing the west. A sidewalk would start at the park driveway and traverse east to the bathroom with a sidewalk going around the bathroom on both ends accessing the shelter. Contractors would install a countertop on the back wall of the bathroom inside the shelter with multiple outlets for patrons to utilize when they rent the shelter. The new shelter will be a steel roof for longevity; no picnic tables were damaged in the tornado.

#### **Holding tank**

Redgate Park already has a ¾" water line run to it through Woodlawn, under West Charles Street to an old drinking fountain in the park. The closest sanitary sewer is at the corner of W Charles and 13<sup>th</sup> Avenue approximately 800LF from the proposed site. Our solution would be to install a 2,000-gallon holding tank would be buried to collect the waste from the bathrooms. We anticipate at most an annual pumping of this holding tank, which can be completed with City equipment.

#### **Tree Grinding**

All the trees that the city lost were piled in the SW corner of Woodlawn, which we estimated at 40 trees per site. T & W Grinding out of Delhi currently takes care of the cities yard waste site. Randy quoted a price of \$600 per hour to complete the grinding. We are allowing people in one at a time to cut up the trees to take for firewood. Once the grinding takes place, it will be easier to transfer the grindings to the yard waste site deemed necessary, or can be left for departmental use and citizens to take.

**Headstone placement**

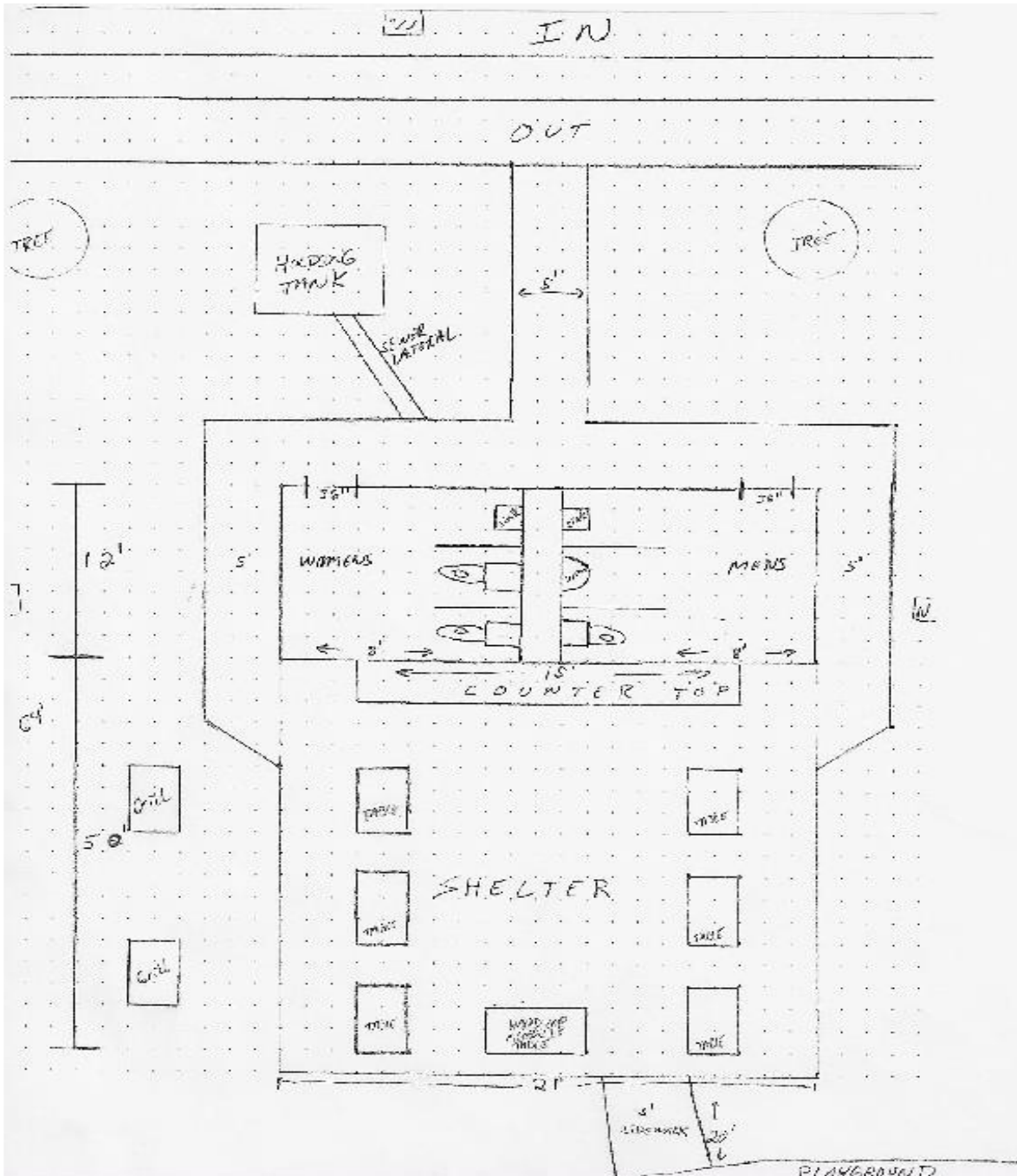
In all 58 headstones were knocked over in this tornado event. The workers reset the majority of the stones, which were smaller. We are proposing to hire a monument company can come and reset the monuments that are larger that staff cannot handle with City equipment and fasten to the foundations properly.

**Road repairs**

Spend the rest of the available funds on seal coating the roads in the cemetery and red gate park.

**Shelter / Bathroom Redgate Park**

West



East



## Description and Specifications Red Gate Restroom 12' x 21''

**Ladies Side                    8' x 12'**

- Ladies – Two    ADA Kohler Model # K-3551 Archer Comfort Height 2 piece elongated toilet
- Ladies – one    Bobrick B-1556 Series Frameless Mirror
- Ladies – Two    Sloan flush valves
- Ladies – Two    ADA Bobrick B-4288 Surface mounted multi-roll toilet paper dispenser
- Ladies – Two    Bobrick B-5806 x 24 24" (610mm) ADA Grab Bars
- Ladies – Two    Bobrick B-5806 x 48 48" (1220mm) ADA Grab Bar
- Ladies – One    Brenham ADA sink model # K-1999-8N-0
- Ladies – One    Delta Faucet 86T1153 86T Two Handle Metering Slow-Close Bathroom Faucet, Chrome
- Ladies – One    Bobrick B-7120 Quiet Dry Series ADA surface mounted Hand Dryer
- Ladies – Two    Interior lighting - 20w-vapor-tight-led-jelly-jar-light-2200-lumens-caged-ceiling-mount-light-5000k/5463/

**Men's Side                    8' x 12'**

- Men's – One    ADA Kohler Model # K-3551 Archer Comfort Height 2 piece elongated toilet
- Men's – One    ADA Kohler Model #K-4920-T Branham urinal
- Men's - One    Bobrick B-1556 Series Frameless Mirror
- Men's – Two    Sloan flush valves
- Men's – One    ADA Bobrick B-4288 Surface mounted multi-roll toilet paper dispenser
- Men's – One    Bobrick B-5806 x 24 24" (610mm) ADA Grab Bar
- Men's – One    Bobrick B-5806 x 48 48" (1220mm) ADA Grab Bar
- Men's – One    Brenham ADA sink model # K-1999-8N-0
- Men's – One    Delta Faucet 86T1153 86T Two Handle Metering Slow-Close Bathroom Faucet, Chrome
- Men's – One    Bobrick B-7120 Quiet Dry Series ADA surface mounted Hand Dryer
- Men's – Two    Interior lighting - 20w-vapor-tight-led-jelly-jar-light-2200-lumens-caged-ceiling-mount-light-5000k/5463/



**Restroom**

- Building material – split block to match other modern bathrooms
- Cement floor – minimum of 4” thickness – 3500# - in building plus rat wall around perimeter.
- 5’ wide concrete sidewalk from the road to bathroom and surrounding bathroom on north and south sides for access to shelter. In addition, 20’ of sidewalk from the east end of the shelter to the playground.
- Epoxy paint wall - white
- Two - 36” commercial grade steel doors/frames with closers/locks keyed same
- 4” block or poured concrete wall between stool and urinal – 8’ tall x 4’ long – men’s side
- 4” block or poured concrete wall between stool and urinal – 8’ tall x 4’ long – Ladies side
- Three lockable doors of steel construction for stalls – one men’s, two ladies
- Hose bib hook up on west outside wall between doors
- 100w-led-parking-lotshoebox-area-light-w-optional-photocell on exterior west end
- 8’ sidewalls
- Follow all City guidelines for electrical and plumbing specifications
- Trench ¾” water line from existing fountain with ¾” PEX tubing, NL fittings, approx. 70’

**Holding tank**

- 2000 gallon holding tank buried between road and bathroom to south of sidewalk
- Follow all City guidelines for plumbing specifications

**Shelter**

- Roof Pitch 4-12
- Minimum of 64’ in length, green steel roof – picture included -50’pad, 12’ bathroom 1’ overhang each end.
- 15’ counter top mounted to east wall of restroom, ADA accessible
- Square D 100 amp service– Overhead, mounted on east outside wall of bathroom
  - 20 amp - Square D breakers
- 8 – GFCI all-weather outlets equally mounted above countertop
- Lighting – (Three) LED Canopy Lights - Dimmable - 5000K - Surface Mount or Conduit Install - 55W (175W MH Equivalent) - 6,600 Lumens Part Number: LPG-50K55P

Steel Roof



Steel security doors

