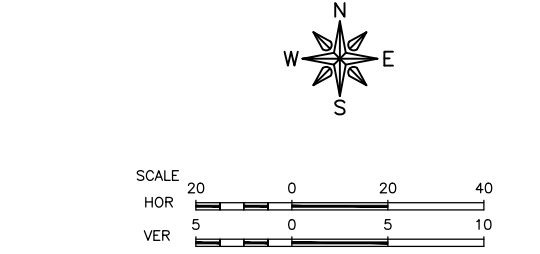
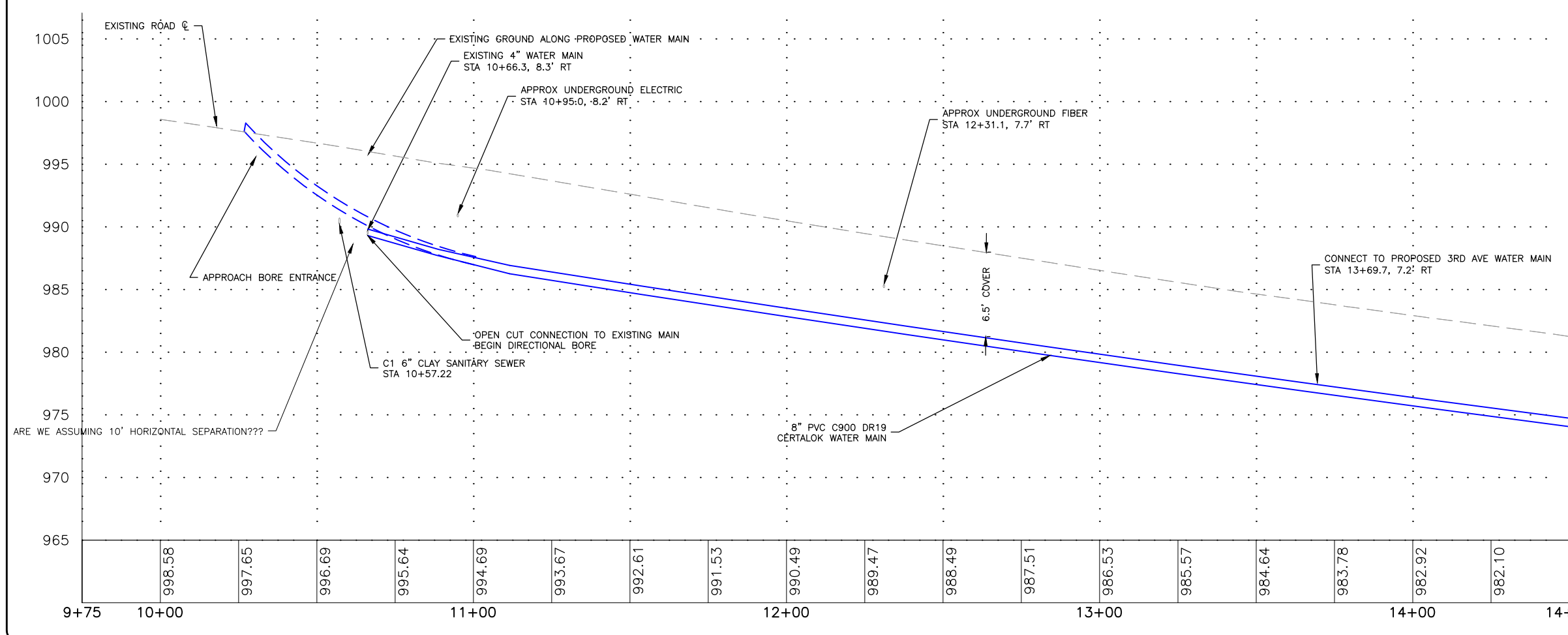


- NOTES:
- FIELD VERIFY SANITARY SEWER SERVICE LOCATIONS.
 - FIELD VERIFY UTILITY CROSSING LOCATIONS.
 - MAINTAIN MINIMUM 18" VERTICAL SEPARATION AND 10' HORIZONTAL SEPARATION BETWEEN SANITARY SEWER AND WATER MAINS.
 - FIELD VERIFY EXISTING WATER MAIN LOCATIONS.
 - FIELD VERIFY EXISTING WATER SERVICE SIZE.
 - CAP ENDS OF ALL WATER MAINS TO BE ABANDONED.
 - A TRACER SYSTEM WILL BE REQUIRED FOR ALL WATER LINES INSTALLED.
 - DIP SHALL BE POLY-WRAPPED.
 - USE LOW PERMEABILITY SOILS WITHIN 10' OF ALL SANITARY AND STORM SEWER CROSSINGS.



UTILITY CROSSING TABLE

CROSSING	UPPER PIPE	ELEVATION	LOWER PIPE	ELEVATION
C1	8" PVC WATER MAIN	-	6" VCP SANITARY	990.13'
-	-	-	-	-
-	-	-	-	-

ESTIMATED LOCATION, FIELD VERIFY FOR ACCURACY

FEHR GRAHAM
ENGINEERING & ENVIRONMENTAL

ILLINOIS
IOWA
WISCONSIN

OWNER/DEVELOPER:
CITY OF OELWEIN
20 2ND AVENUE SW
OELWEIN, IA 50662

PROJECT AND LOCATION:
2026 WATER SYSTEM
IMPROVEMENTS
OELWEIN, IOWA

DRAWN BY: JRA
APPROVED BY: JSB
DATE: 08/26/2025
SCALE: AS NOTED

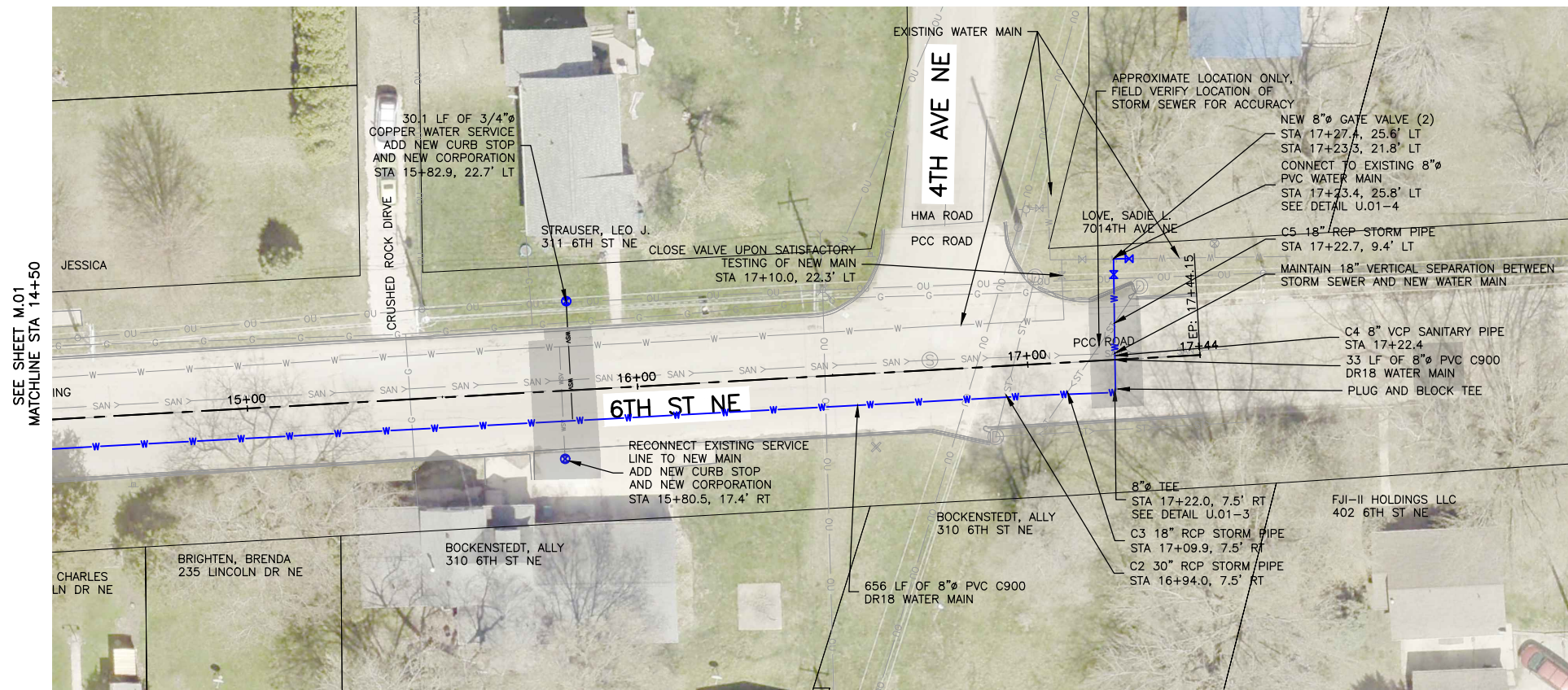
REVISIONS		
REV. NO.	DESCRIPTION	DATE
1	SANITARY SEWER SEPARATION DISTANCES	9/17/25

DRAWING:
PLAN AND PROFILE WATER MAIN 6TH ST &
3RD AVE - DIVISION 1

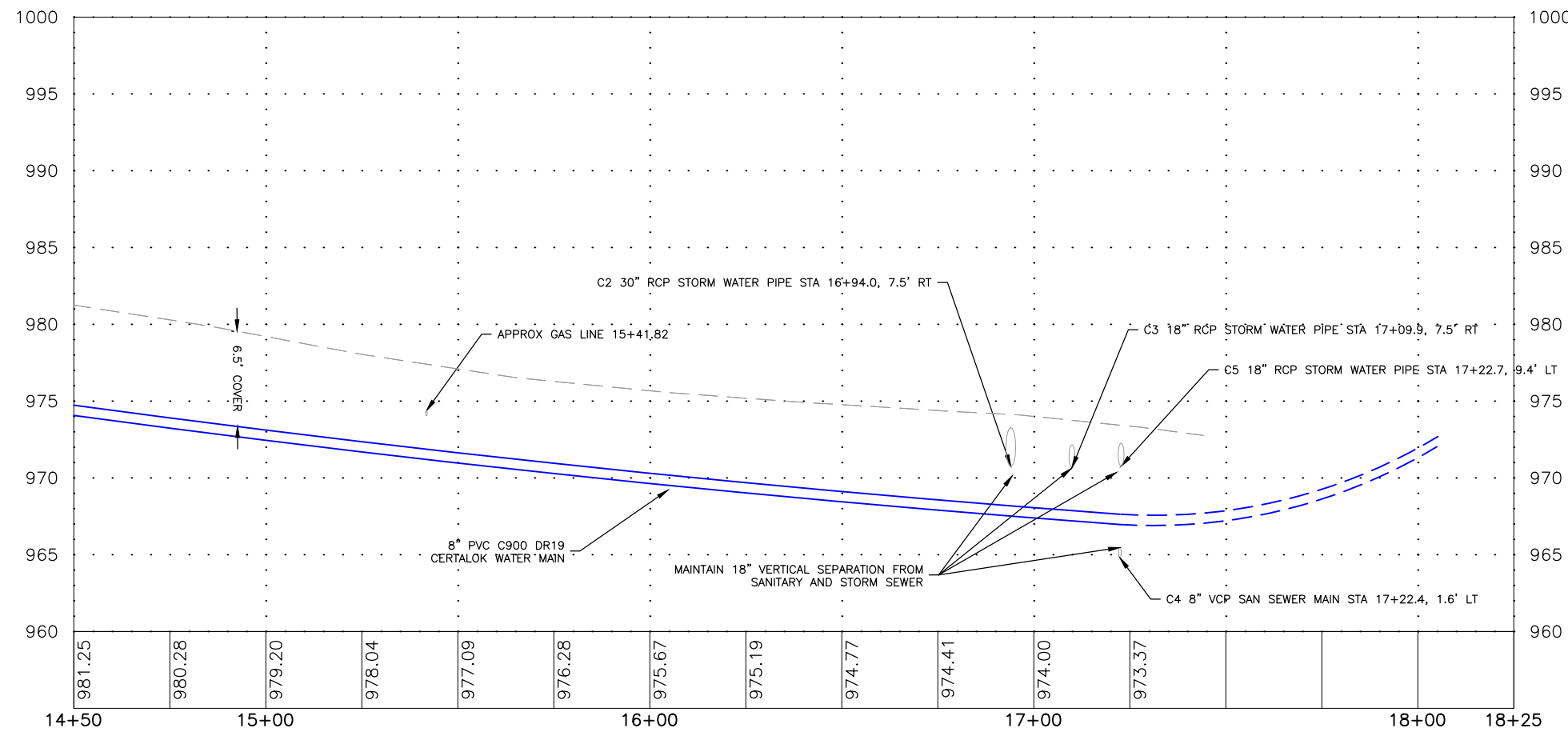
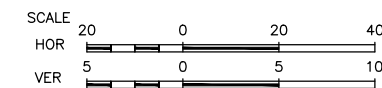
SET TYPE: PERMIT SET

JOB NUMBER:
25-905

SHEET NUMBER:
M.01



- NOTES:
- FIELD VERIFY SANITARY SEWER SERVICE LOCATIONS.
 - FIELD VERIFY UTILITY CROSSING LOCATIONS.
 - MAINTAIN MINIMUM 18" VERTICAL SEPARATION AND 10' HORIZONTAL SEPARATION BETWEEN SANITARY SEWER AND WATER MAINS.
 - FIELD VERIFY EXISTING WATER MAIN LOCATIONS.
 - FIELD VERIFY EXISTING WATER SERVICE SIZE.
 - CAP ENDS OF ALL WATER MAINS TO BE ABANDONED.
 - A TRACER SYSTEM WILL BE REQUIRED FOR ALL WATER LINES INSTALLED.
 - DIP SHALL BE POLY-WRAPPED.
 - USE LOW PERMEABILITY SOILS WITHIN 10' OF ALL SANITARY AND STORM SEWER CROSSINGS.



ESTIMATED LOCATION, FIELD VERIFY FOR ACCURACY

UTILITY CROSSING TABLE				
CROSSING	UPPER PIPE	ELEVATION	LOWER PIPE	ELEVATION
C2	30" RCP STORM	970.51'	8" PVC WATER MAIN	968.18'
C3	18" RCP STORM	970.66'	8" PVC WATER MAIN	967.87'
C4	8" PVC WATER MAIN	966.97'	8" VCP SANITARY	965.5'
C5	18" RCP STORM	970.76'	8" PVC WATER MAIN	967.63'

FEHR GRAHAM
ENGINEERING & ENVIRONMENTAL

ILLINOIS
IOWA
WISCONSIN

OWNER/DEVELOPER:
CITY OF OELWEIN
20 2ND AVENUE SW
OELWEIN, IA 50662

PROJECT AND LOCATION:
2026 WATER SYSTEM
IMPROVEMENTS
OELWEIN, IOWA

DRAWN BY: JRA
APPROVED BY: JSB
DATE: 08/26/2025
SCALE: AS NOTED

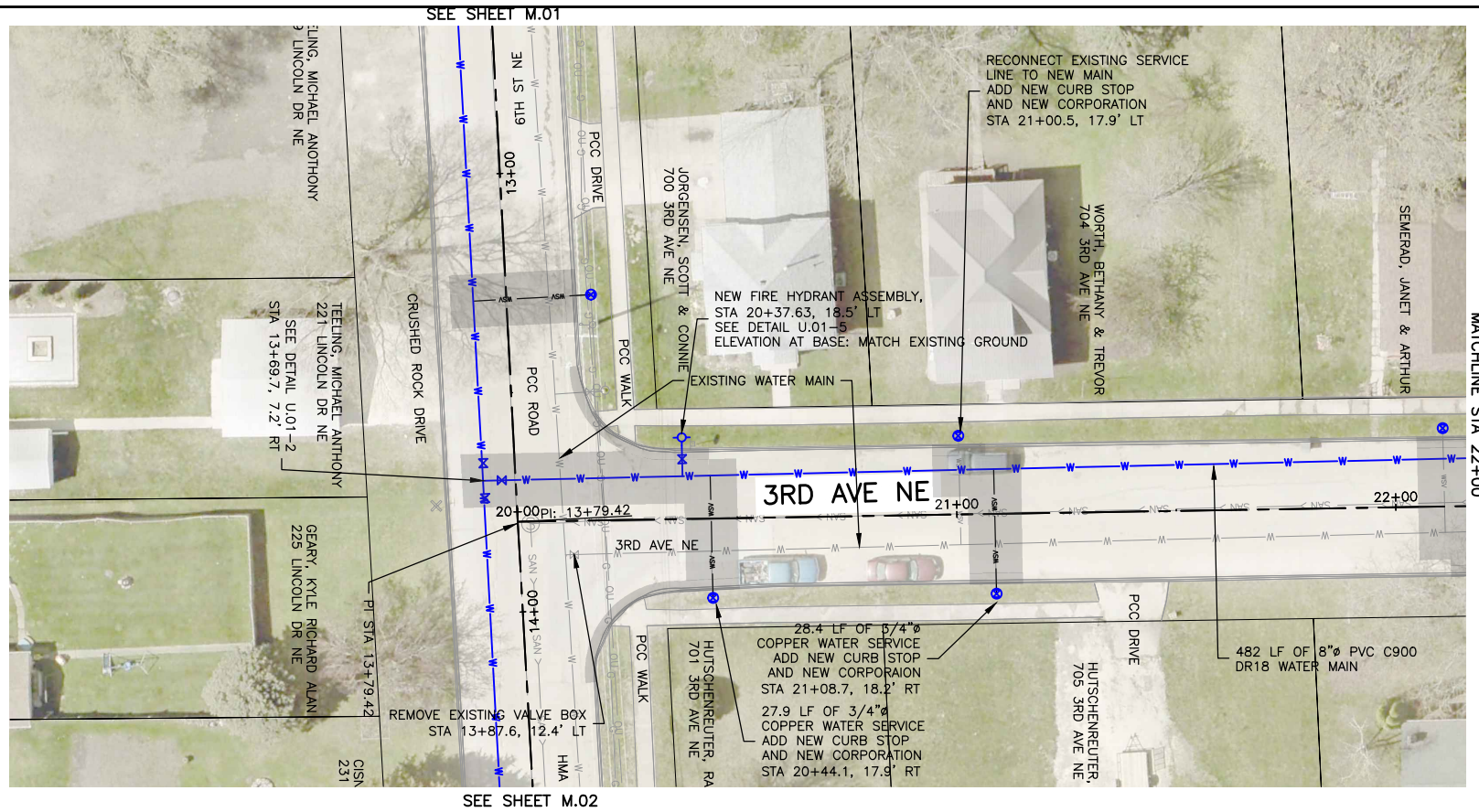
REVISIONS		
REV. NO.	DESCRIPTION	DATE
1	SANITARY SEWER SEPARATION DISTANCES	9/17/25

DRAWING:
PLAN AND PROFILE WATER MAIN 6TH ST &
3RD AVE - DIVISION 1

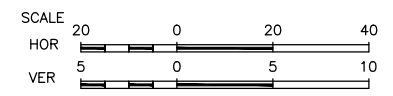
SET TYPE: PERMIT SET
G:\C30\25-905\25-905 DESIGN 6th St NE & 3rd Ave NE.dwg, M.02

JOB NUMBER:
25-905

SHEET NUMBER:
M.02

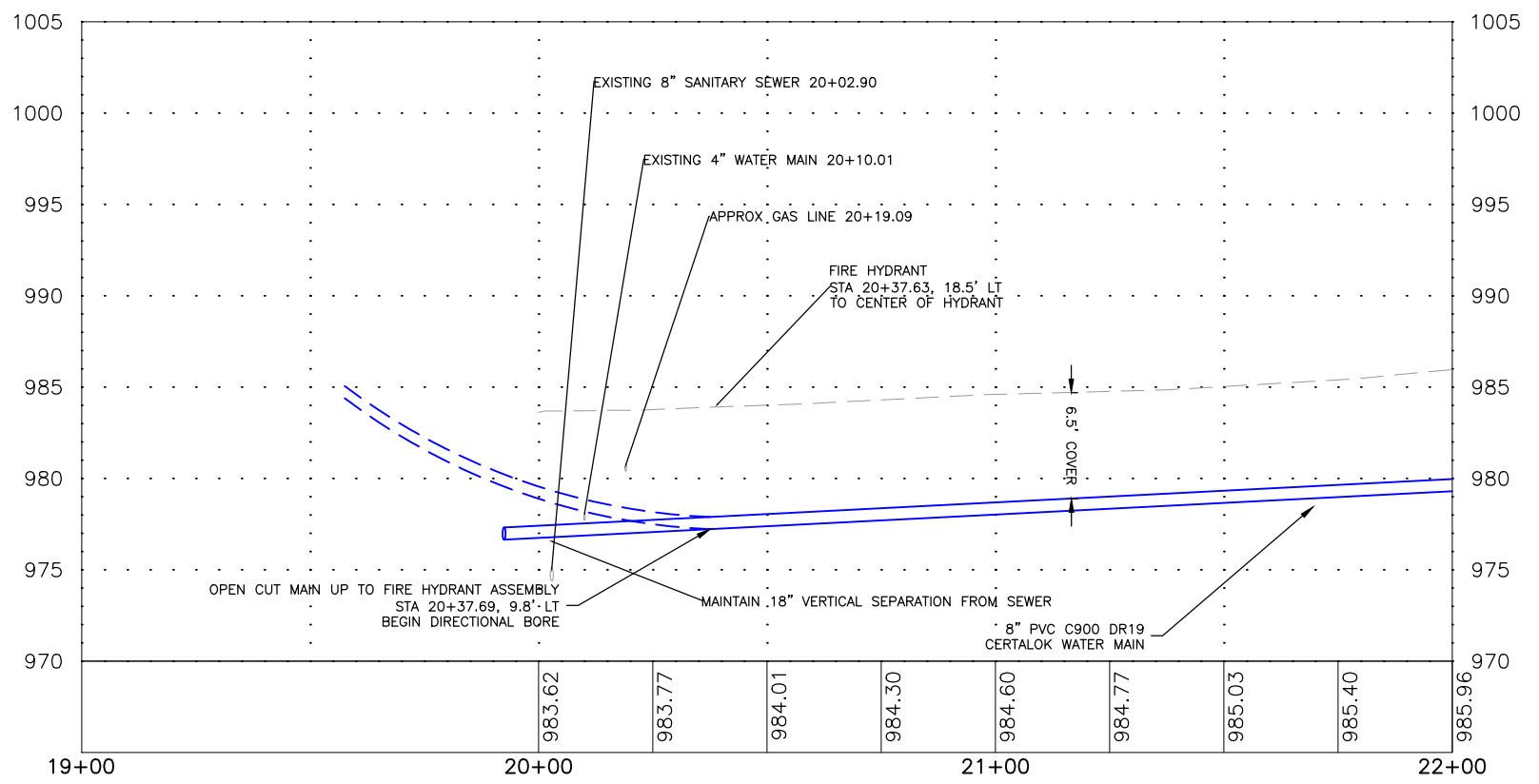


- NOTES:
- FIELD VERIFY SANITARY SEWER SERVICE LOCATIONS.
 - FIELD VERIFY UTILITY CROSSING LOCATIONS.
 - MAINTAIN MINIMUM 18" VERTICAL SEPARATION AND 10' HORIZONTAL SEPARATION BETWEEN SANITARY SEWER AND WATER MAINS.
 - FIELD VERIFY EXISTING WATER MAIN LOCATIONS.
 - FIELD VERIFY EXISTING WATER SERVICE SIZE.
 - CAP ENDS OF ALL WATER MAINS TO BE ABANDONED.
 - A TRACER SYSTEM WILL BE REQUIRED FOR ALL WATER LINES INSTALLED.
 - DIP SHALL BE POLY-WRAPPED.
 - USE LOW PERMEABILITY SOILS WITHIN 10' OF ALL SANITARY AND STORM SEWER CROSSINGS.



UTILITY CROSSING TABLE

CROSSING	INVERT OF UPPER PIPE	ELEVATION	CROWN OF LOWER PIPE	ELEVATION
-	-	-	-	-
-	-	-	-	-
-	-	-	-	-



FEHR GRAHAM
ENGINEERING & ENVIRONMENTAL

ILLINOIS
IOWA
WISCONSIN

OWNER/DEVELOPER:
CITY OF OELWEIN
20 2ND AVENUE SW
OELWEIN, IA 50662

PROJECT AND LOCATION:
2026 WATER SYSTEM
IMPROVEMENTS
OELWEIN, IOWA

DRAWN BY: JRA
APPROVED BY: JSB
DATE: 08/26/2025
SCALE: AS NOTED

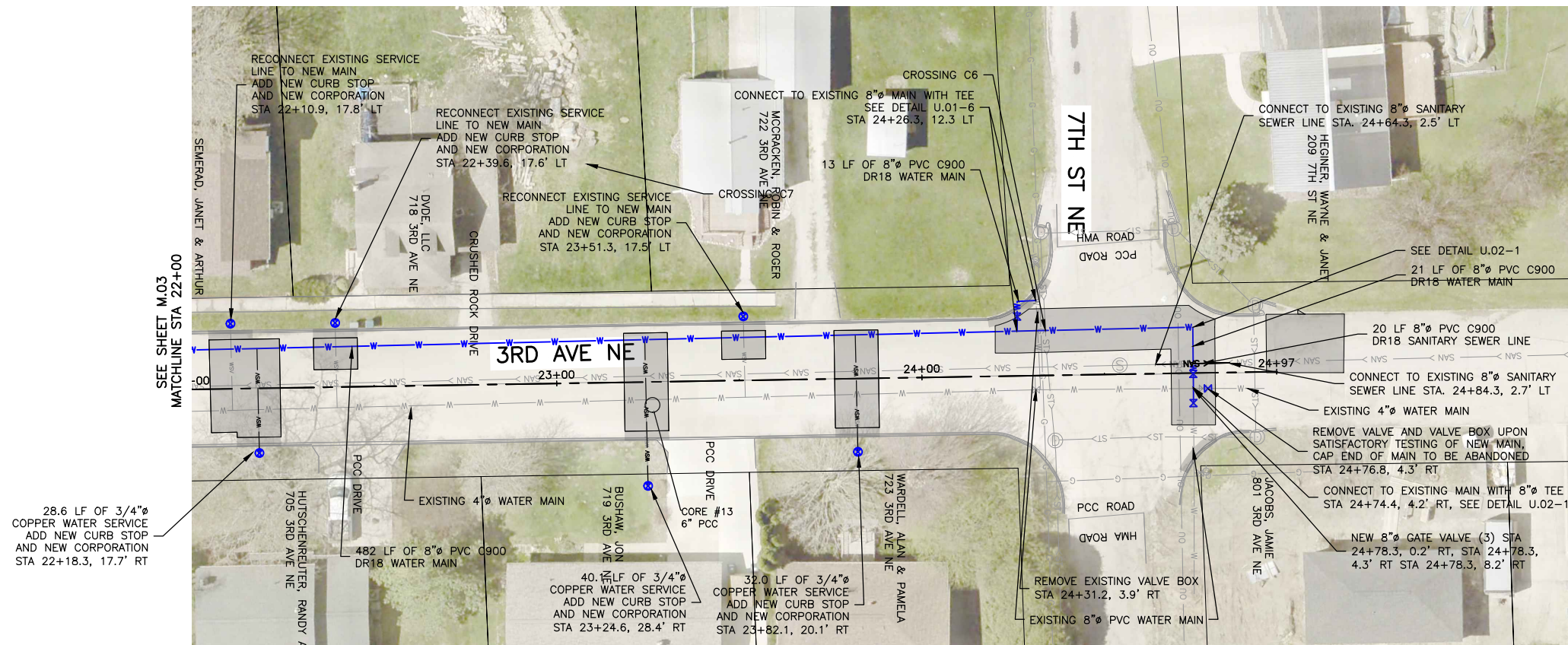
REVISIONS		
REV. NO.	DESCRIPTION	DATE
1	SANITARY SEWER SEPARATION DISTANCES	9/17/25

DRAWING:
PLAN AND PROFILE WATER MAIN 6TH ST &
3RD AVE - DIVISION 1

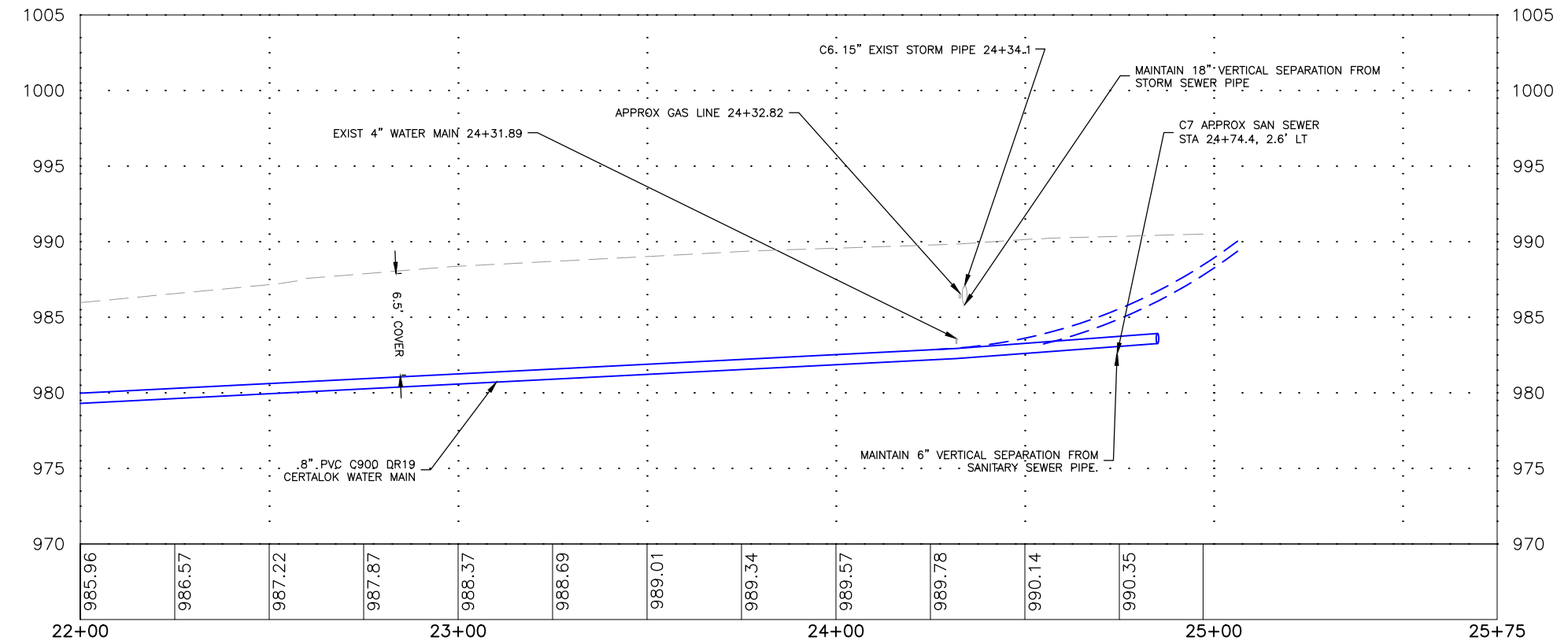
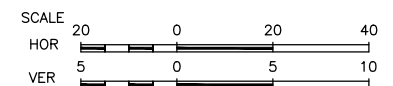
SET TYPE: PERMIT SET

JOB NUMBER:
25-905

SHEET NUMBER:
M.03



- NOTES:
- FIELD VERIFY SANITARY SEWER SERVICE LOCATIONS.
 - FIELD VERIFY UTILITY CROSSING LOCATIONS.
 - MAINTAIN MINIMUM 18" VERTICAL SEPARATION AND 10' HORIZONTAL SEPARATION BETWEEN SANITARY SEWER AND WATER MAINS.
 - FIELD VERIFY EXISTING WATER MAIN LOCATIONS.
 - FIELD VERIFY EXISTING WATER SERVICE SIZE.
 - CAP ENDS OF ALL WATER MAINS TO BE ABANDONED.
 - A TRACER SYSTEM WILL BE REQUIRED FOR ALL WATER LINES INSTALLED.
 - DIP SHALL BE POLY-WRAPPED.
 - USE LOW PERMEABILITY SOILS WITHIN 10' OF ALL SANITARY AND STORM SEWER CROSSINGS.



UTILITY CROSSING TABLE

CROSSING	INVERT OF UPPER PIPE	ELEVATION	CROWN OF LOWER PIPE	ELEVATION
C6	15" PCP STORM	986.0'	8" PVC WATER MAIN	982.97'
C7	8" PVC WATER MAIN	983.06'	8" VCP SANITARY	982.45'
-	-	-	-	-

ESTIMATED LOCATION, FIELD VERIFY FOR ACCURACY

FEHR GRAHAM
ENGINEERING & ENVIRONMENTAL

ILLINOIS
IOWA
WISCONSIN

OWNER/DEVELOPER:
CITY OF OELWEIN
20 2ND AVENUE SW
OELWEIN, IA 50662

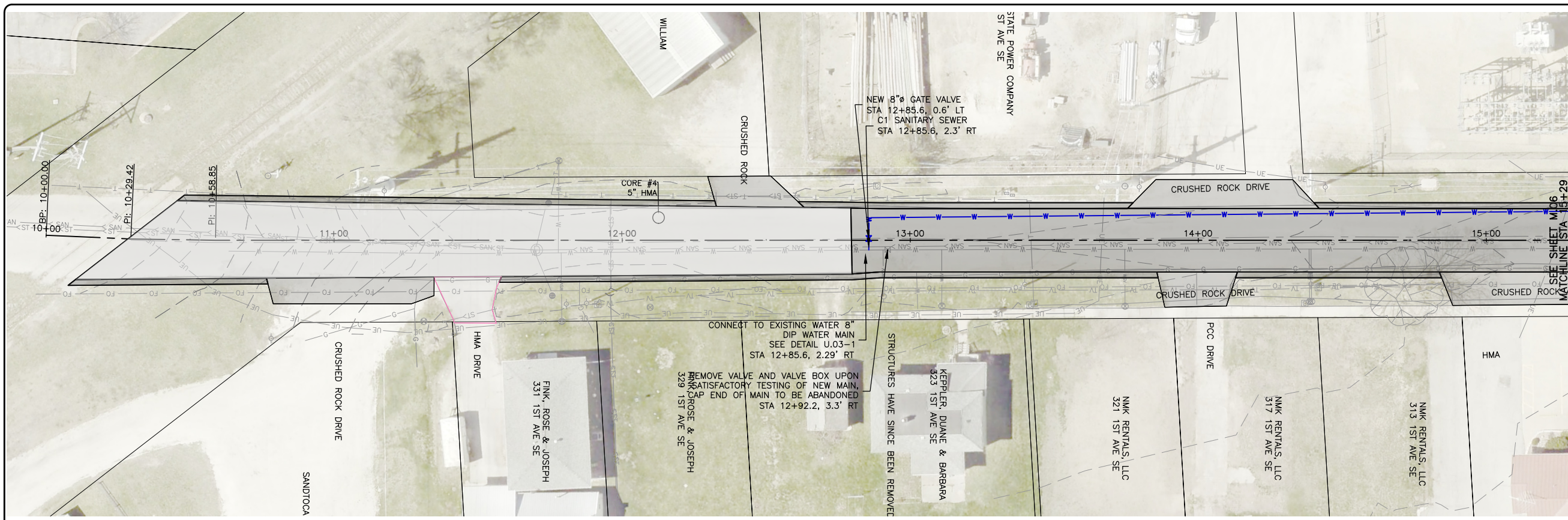
PROJECT AND LOCATION:
2026 WATER SYSTEM
IMPROVEMENTS
OELWEIN, IOWA

DRAWN BY: JRA
APPROVED BY: JSB
DATE: 08/26/2025
SCALE: AS NOTED

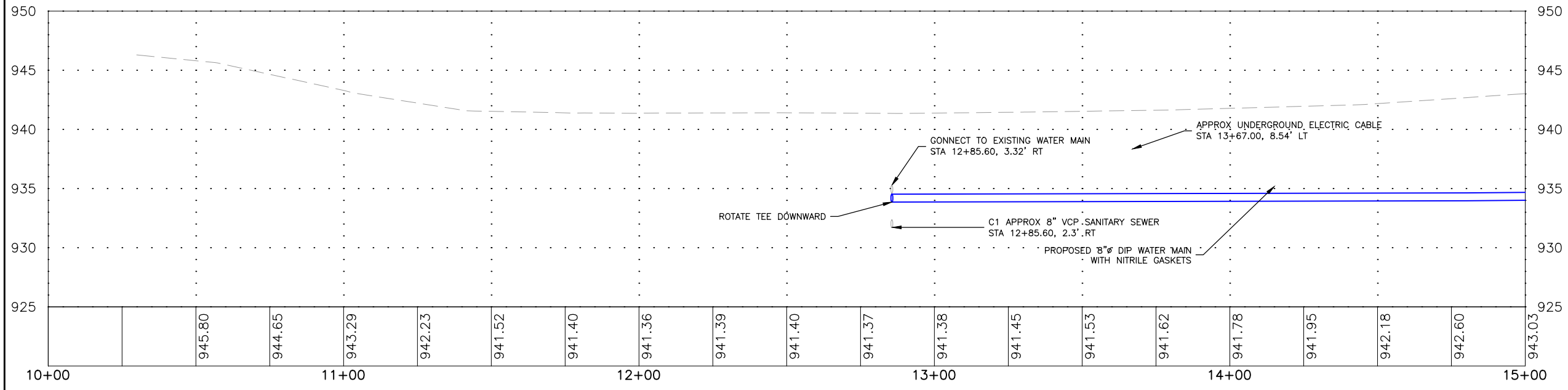
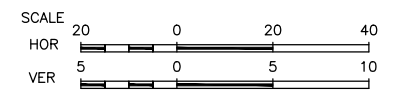
REVISIONS		
REV. NO.	DESCRIPTION	DATE
1	SANITARY SEWER SEPARATION DISTANCES	9/17/25

DRAWING:
PLAN AND PROFILE WATER MAIN 6TH ST &
3RD AVE - DIVISION 1
SET TYPE: PERMIT SET

JOB NUMBER:
25-905
SHEET NUMBER:
M.04



- NOTES:
- FIELD VERIFY SANITARY SEWER SERVICE LOCATIONS.
 - FIELD VERIFY UTILITY CROSSING LOCATIONS.
 - MAINTAIN MINIMUM 18" VERTICAL SEPARATION AND 10' HORIZONTAL SEPARATION BETWEEN SANITARY SEWER AND WATER MAINS.
 - FIELD VERIFY EXISTING WATER MAIN LOCATIONS.
 - FIELD VERIFY EXISTING WATER SERVICE SIZE.
 - CAP ENDS OF ALL WATER MAINS TO BE ABANDONED.
 - A TRACER SYSTEM WILL BE REQUIRED FOR ALL WATER LINES INSTALLED.
 - DIP SHALL BE POLY-WRAPPED.
 - USE LOW PERMEABILITY SOILS WITHIN 10' OF ALL SANITARY AND STORM SEWER CROSSINGS.
 - OPEN CUT WATER MAIN ON 1ST AVE SE.



CROSSING	INVERT OF UPPER PIPE	ELEVATION	CROWN OF LOWER PIPE	ELEVATION
C1	8" DIP WATER MAIN	933.86'	8" VCP SANITARY	932.36'
-	-	-	-	-
-	-	-	-	-

FEHR GRAHAM
ENGINEERING & ENVIRONMENTAL

ILLINOIS
IOWA
WISCONSIN

OWNER/DEVELOPER:
CITY OF OELWEIN
20 2ND AVENUE SW
OELWEIN, IA 50662

PROJECT AND LOCATION:
2026 WATER SYSTEM
IMPROVEMENTS
OELWEIN, IOWA

DRAWN BY: JRA
APPROVED BY: JSB
DATE: 08/26/2025
SCALE: AS NOTED

REVISIONS		
REV. NO.	DESCRIPTION	DATE
1	SANITARY SEWER SEPARATION DISTANCES	9/17/25

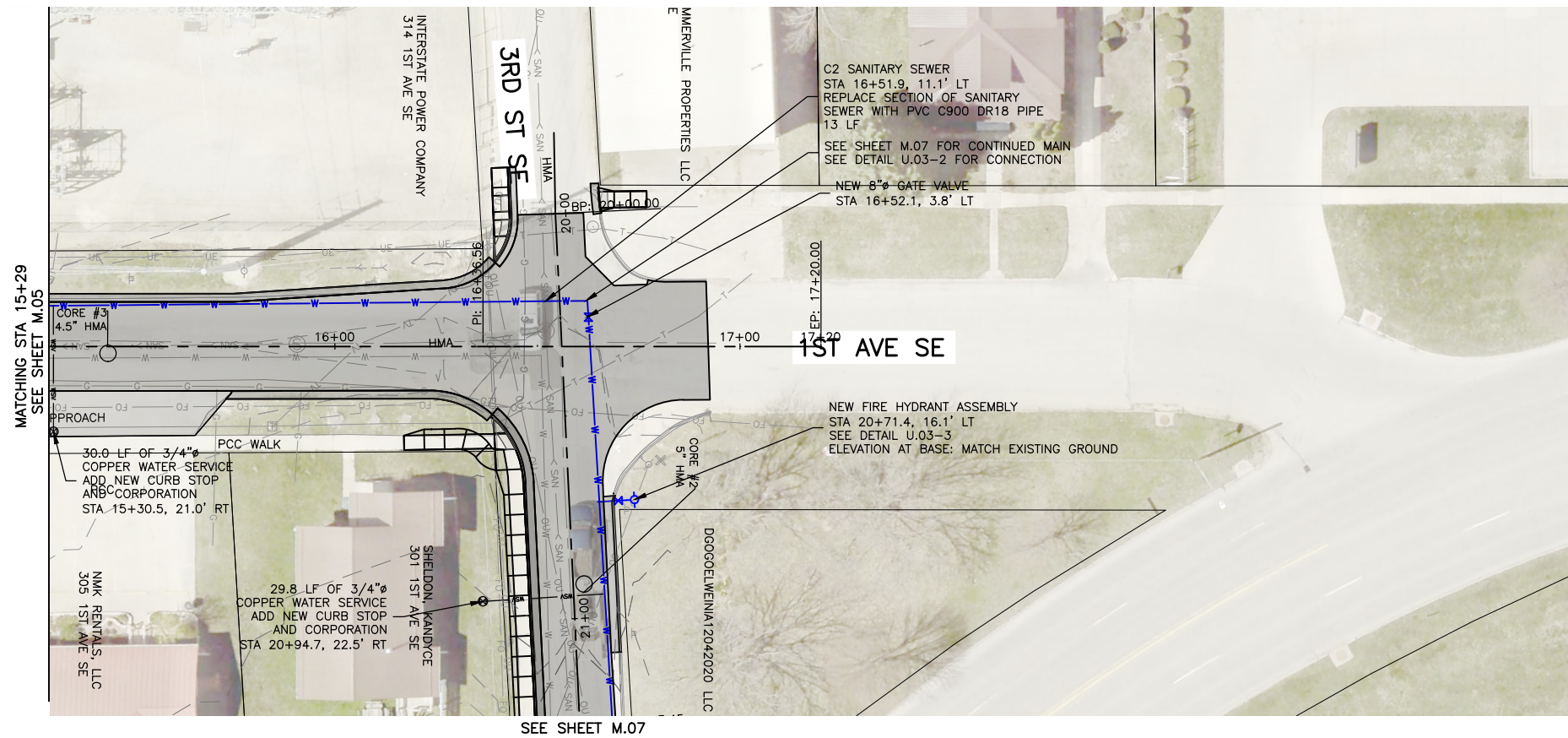
DRAWING:
PLAN AND PROFILE WATER MAIN 3RD ST &
1ST AVE - DIVISION 2

SET TYPE: PERMIT SET

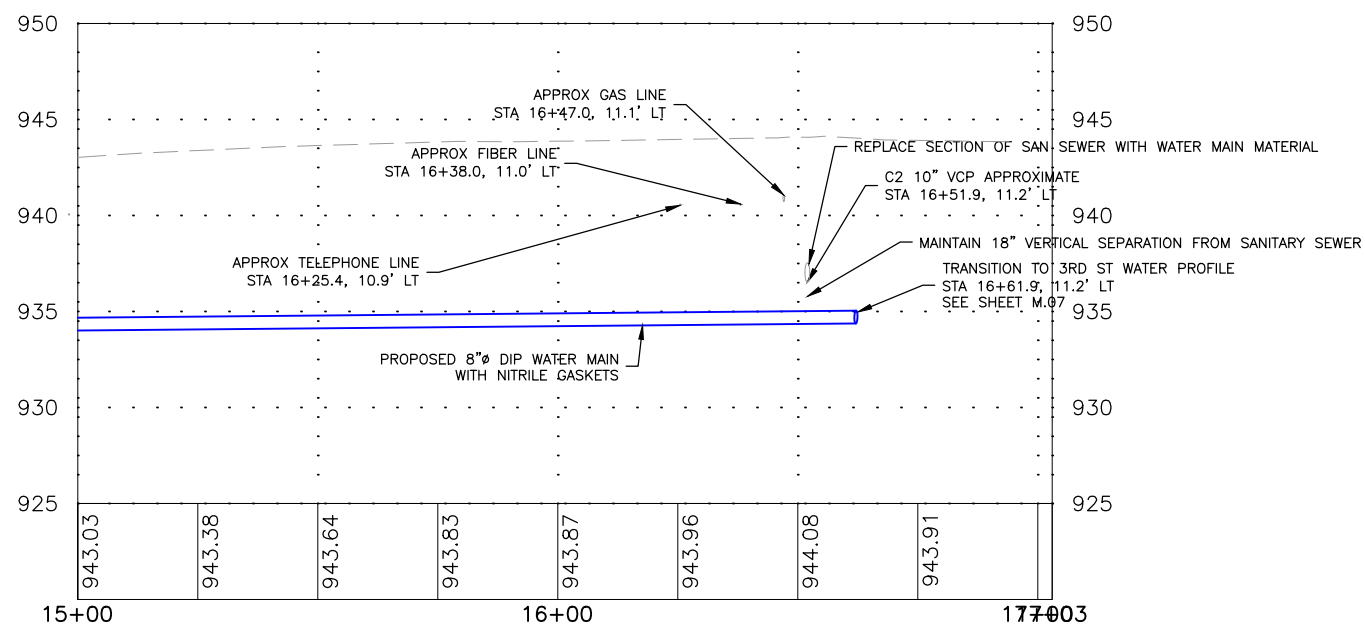
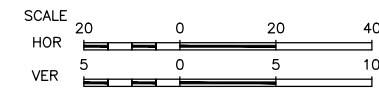
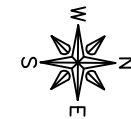
G:\C30\25\25-905\25-905 DESIGN 3rd St SE and 1st Ave SE.dwg, M.05

JOB NUMBER:
25-905

SHEET NUMBER:
M.05



- NOTES:
- FIELD VERIFY SANITARY SEWER SERVICE LOCATIONS.
 - FIELD VERIFY UTILITY CROSSING LOCATIONS.
 - MAINTAIN MINIMUM 18" VERTICAL SEPARATION AND 10' HORIZONTAL SEPARATION BETWEEN SANITARY SEWER AND WATER MAINS.
 - FIELD VERIFY EXISTING WATER MAIN LOCATIONS.
 - FIELD VERIFY EXISTING WATER SERVICE SIZE.
 - CAP ENDS OF ALL WATER MAINS TO BE ABANDONED.
 - A TRACER SYSTEM WILL BE REQUIRED FOR ALL WATER LINES INSTALLED.
 - DIP SHALL BE POLY-WRAPPED.
 - USE LOW PERMEABILITY SOILS WITHIN 10' OF ALL SANITARY AND STORM SEWER CROSSINGS.
 - OPEN CUT WATER MAIN ON 1ST AVE SE.



UTILITY CROSSING TABLE

CROSSING	INVERT OF UPPER PIPE	ELEVATION	CROWN OF LOWER PIPE	ELEVATION
C2	10" VCP SANITARY	936.40'	8" DIP WATER MAIN	935.02'
-	-	-	-	-
-	-	-	-	-

FEHR GRAHAM
ENGINEERING & ENVIRONMENTAL

ILLINOIS
IOWA
WISCONSIN

OWNER/DEVELOPER:
CITY OF OELWEIN
20 2ND AVENUE SW
OELWEIN, IA 50662

PROJECT AND LOCATION:
2026 WATER SYSTEM
IMPROVEMENTS
OELWEIN, IOWA

DRAWN BY: JRA
APPROVED BY: JSB
DATE: 08/26/2025
SCALE: AS NOTED

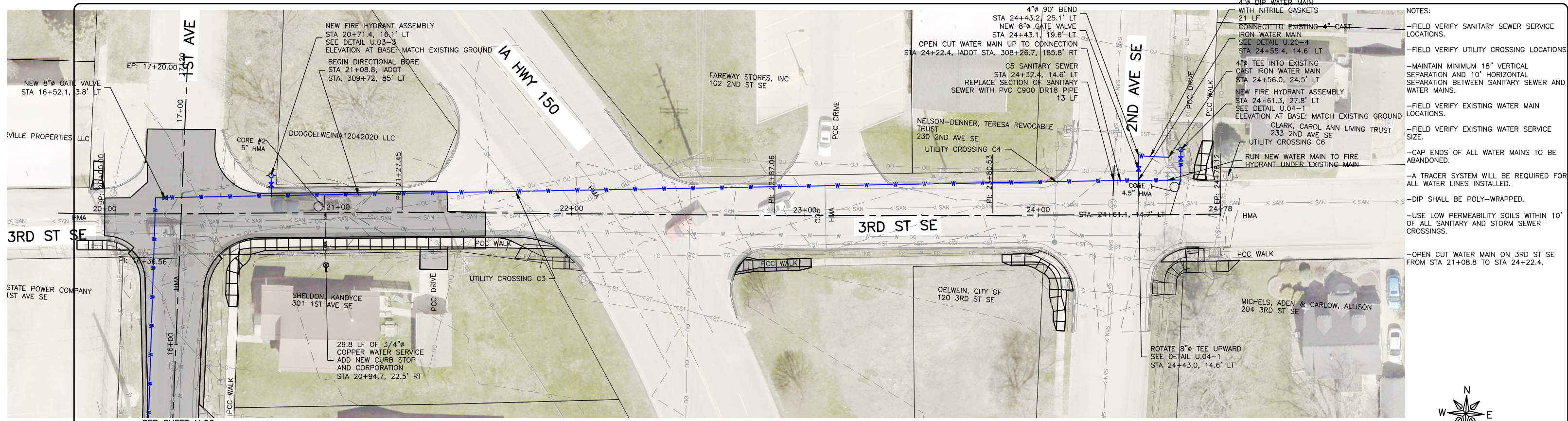
REVISIONS		
REV. NO.	DESCRIPTION	DATE
1	SANITARY SEWER SEPARATION DISTANCES	9/17/25

DRAWING:
PLAN AND PROFILE WATER MAIN 3RD ST &
1ST AVE - DIVISION 2

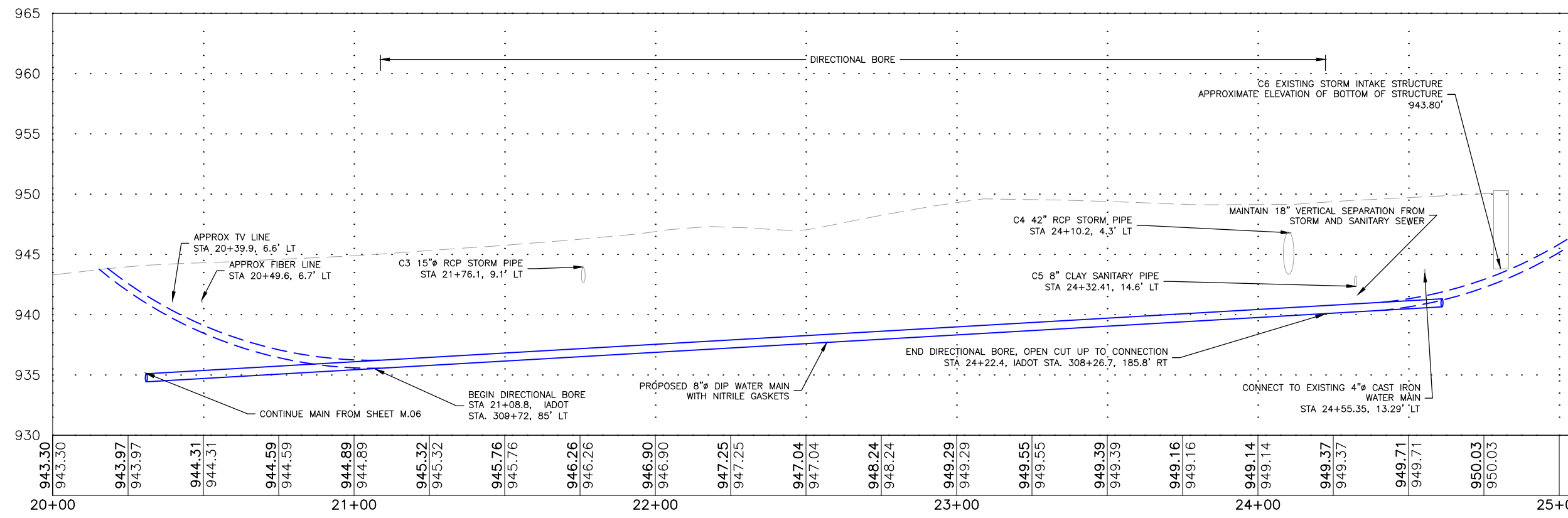
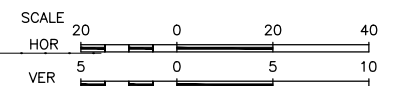
SET TYPE: PERMIT SET
G:\C30\25\25-905\25-905 DESIGN 3rd St SE and 1st Ave SE.dwg, M.06

JOB NUMBER:
25-905

SHEET NUMBER:
M.06



- NOTES:
- FIELD VERIFY SANITARY SEWER SERVICE LOCATIONS.
 - FIELD VERIFY UTILITY CROSSING LOCATIONS
 - MAINTAIN MINIMUM 18" VERTICAL SEPARATION AND 10' HORIZONTAL SEPARATION BETWEEN SANITARY SEWER AND WATER MAINS.
 - FIELD VERIFY EXISTING WATER MAIN LOCATIONS.
 - FIELD VERIFY EXISTING WATER SERVICE SIZE.
 - CAP ENDS OF ALL WATER MAINS TO BE ABANDONED.
 - A TRACER SYSTEM WILL BE REQUIRED FOR ALL WATER LINES INSTALLED.
 - DIP SHALL BE POLY-WRAPPED.
 - USE LOW PERMEABILITY SOILS WITHIN 10' OF ALL SANITARY AND STORM SEWER CROSSINGS.
 - OPEN CUT WATER MAIN ON 3RD ST SE FROM STA 21+08.8 TO STA 24+22.4.



UTILITY CROSSING TABLE

CROSSING	INVERT OF UPPER PIPE	ELEVATION	CROWN OF LOWER PIPE	ELEVATION
C3	15" RCP STORM PIPE	942.64'	8" DIP WATER MAIN	937.20'
C4	42" RCP STORM PIPE	943.35'	8" DIP WATER MAIN	940.58'
C5	8" VCP SANITARY	942.35'	8" DIP WATER MAIN	940.90'
C6	BOTTOM OF PCC STORM INTAKE STRUCTURE	943.80'	8" WATER MAIN BORE PATH	-

FEHR GRAHAM
ENGINEERING & ENVIRONMENTAL

ILLINOIS
IOWA
WISCONSIN

OWNER/DEVELOPER:
CITY OF OELWEIN
20 2ND AVENUE SW
OELWEIN, IA 50662

PROJECT AND LOCATION:
2026 WATER SYSTEM
IMPROVEMENTS
OELWEIN, IOWA

DRAWN BY: JRA
APPROVED BY: JSB
DATE: 08/26/2025
SCALE: AS NOTED

REVISIONS

REV. NO.	DESCRIPTION	DATE
1	SANITARY SEWER SEPARATION DISTANCES	9/17/25

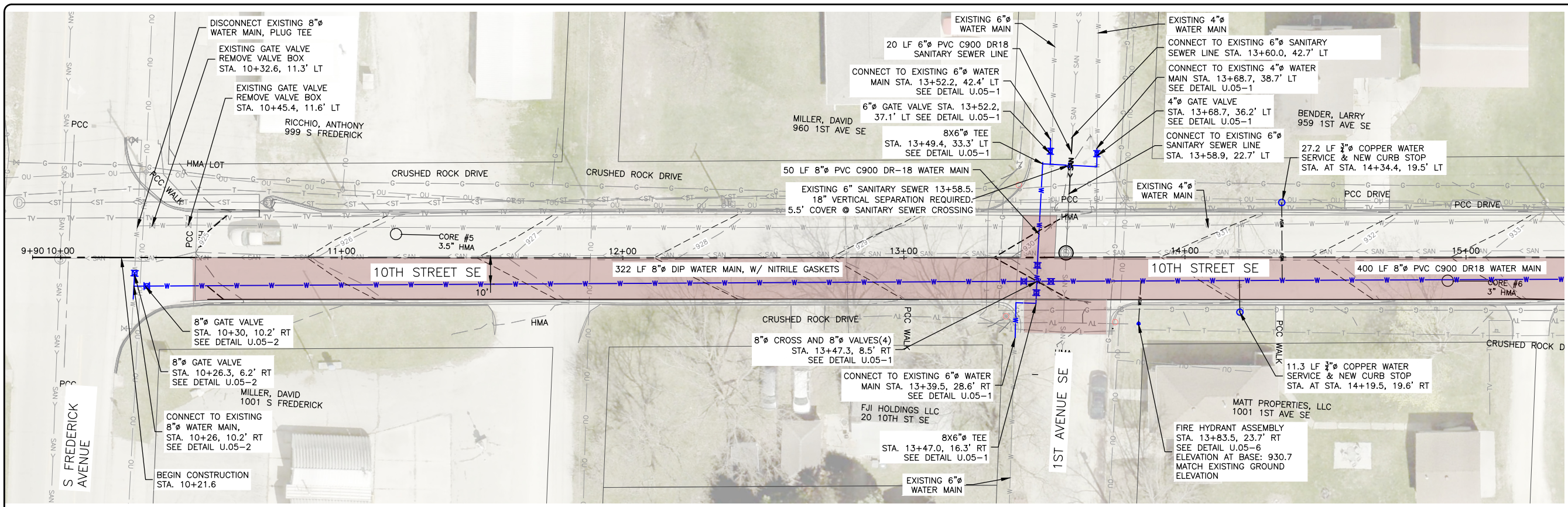
DRAWING:
PLAN AND PROFILE WATER MAIN 3RD ST &
1ST AVE - DIVISION 2

SET TYPE: PERMIT SET

G:\C30\25-905\25-905 DESIGN 3rd St SE and 1st Ave SE.dwg, M.07

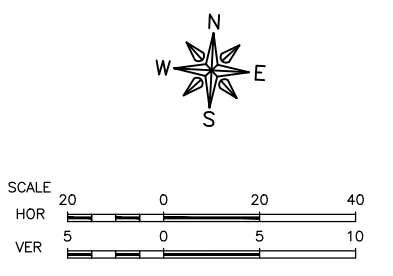
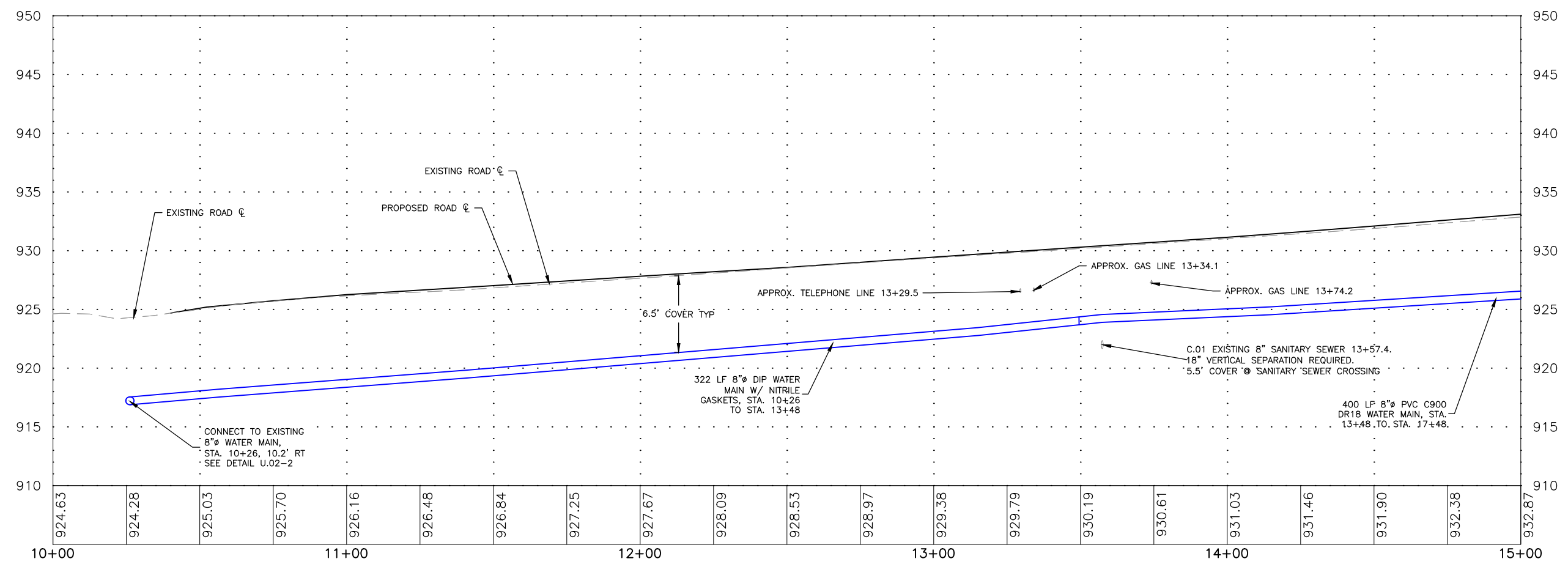
JOB NUMBER:
25-905

SHEET NUMBER:
M.07



- NOTES:
- FIELD VERIFY SANITARY SEWER SERVICE LOCATIONS.
 - MAINTAIN MINIMUM 18" VERTICAL SEPARATION AND 10' HORIZONTAL SEPARATION BETWEEN SANITARY SEWER AND WATER MAINS.
 - FIELD VERIFY EXISTING WATER MAIN LOCATIONS.
 - FIELD VERIFY EXISTING WATER SERVICE SIZE.
 - CAP ENDS OF ALL WATER MAINS TO BE ABANDONED.
 - A TRACER SYSTEM WILL BE REQUIRED FOR ALL WATER LINES INSTALLED.
 - DIP SHALL BE POLY-WRAPPED
 - USE LOW PERMEABILITY SOILS WITHIN 10' OF ALL SANITARY AND STORM SEWER CROSSINGS.

SEE SHEET M.08
MATCHLINE STA 15+00



UTILITY CROSSING TABLE

CROSSING	INVERT OF UPPER PIPE	ELEVATION	CROWN OF LOWER PIPE	ELEVATION
C.01	8" DIP WATER MAIN	923.90	6" PVC SANITARY SEWER	922.33
-	-	-	-	-
-	-	-	-	-

FEHR GRAHAM
ENGINEERING & ENVIRONMENTAL

ILLINOIS
IOWA
WISCONSIN

OWNER/DEVELOPER:
CITY OF OELWEIN
20 2ND AVENUE SW
OELWEIN, IA 50662

PROJECT AND LOCATION:
2026 WATER SYSTEM
IMPROVEMENTS
OELWEIN, IOWA

DRAWN BY: JRA
APPROVED BY: JSB
DATE: 08/26/2025
SCALE: AS NOTED

REVISIONS

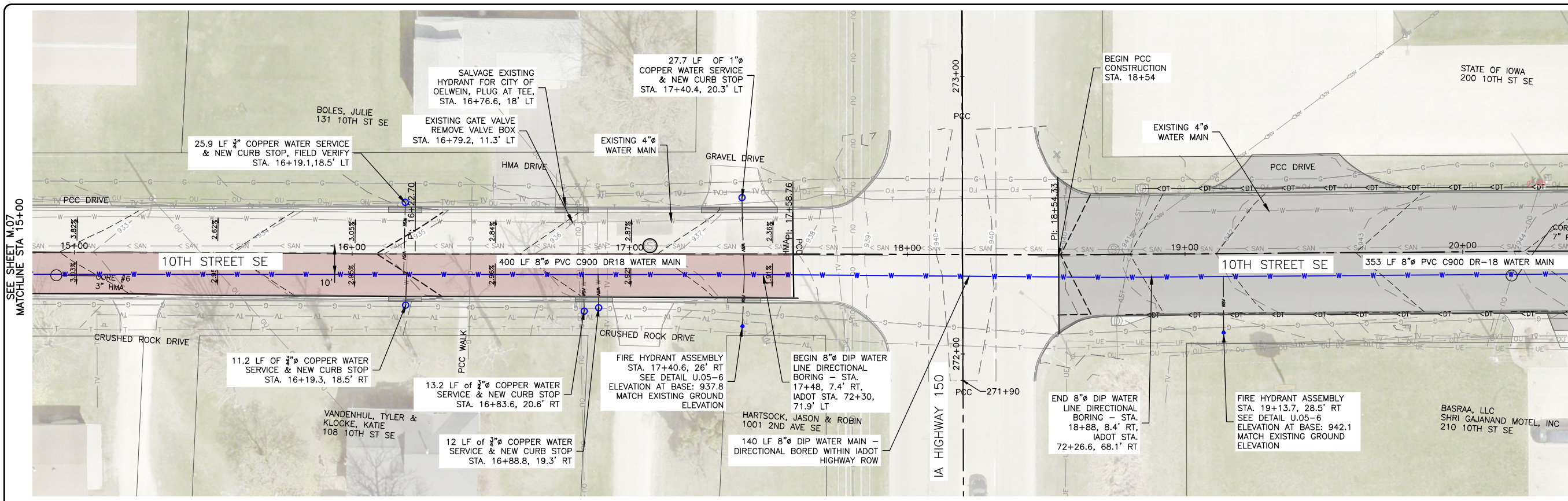
REV. NO.	DESCRIPTION	DATE
1	SANITARY SEWER SEPARATION DISTANCES	9/17/25

DRAWING:
PLAN AND PROFILE WATER MAIN 10TH ST
- DIVISION 3

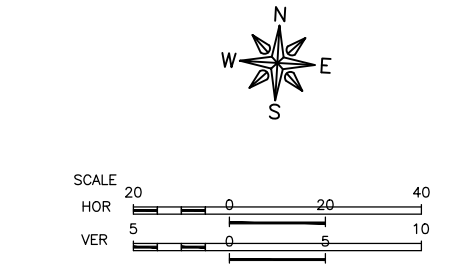
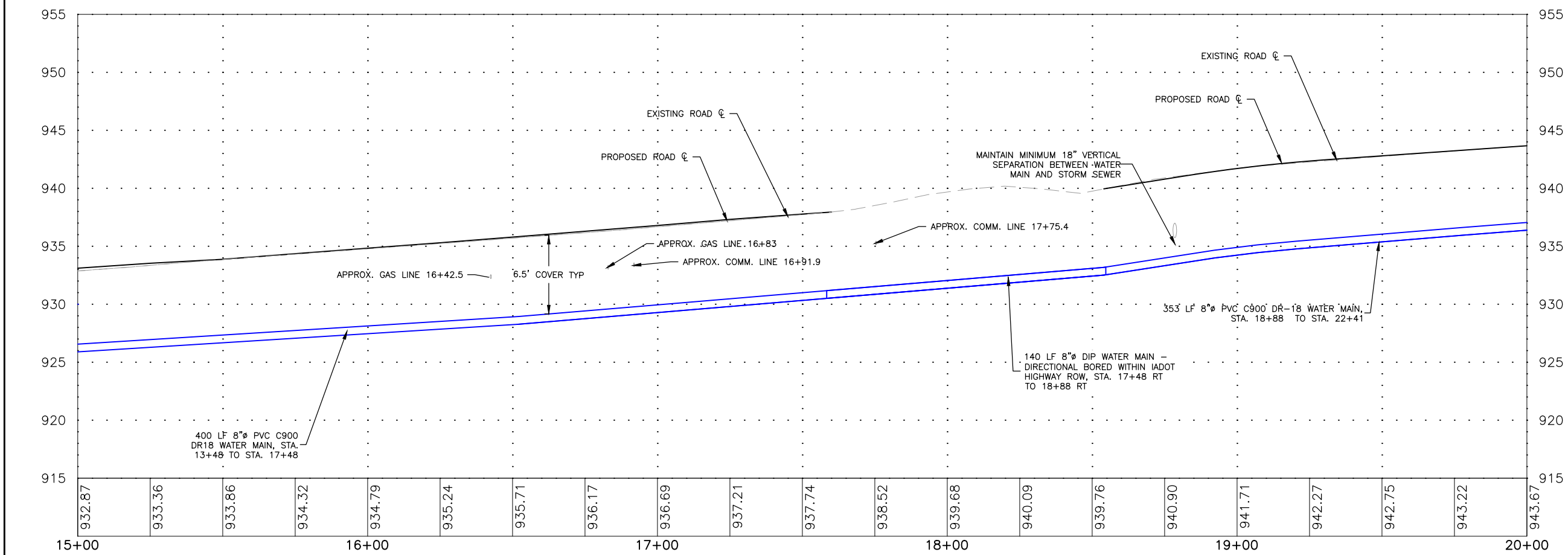
SET TYPE: PERMIT SET
G:\C30\25-905\25-905 DESIGN 10th St SE & SW.dwg, M.08

JOB NUMBER:
25-905

SHEET NUMBER:
M.08



- NOTES:
- FIELD VERIFY SANITARY SEWER SERVICE LOCATIONS.
 - MAINTAIN MINIMUM 18" VERTICAL SEPARATION AND 10' HORIZONTAL SEPARATION BETWEEN SANITARY SEWER AND WATER MAINS.
 - FIELD VERIFY EXISTING WATER MAIN LOCATIONS.
 - FIELD VERIFY EXISTING WATER SERVICE SIZE.
 - CAP ENDS OF ALL WATER MAINS TO BE ABANDONED.
 - A TRACER SYSTEM WILL BE REQUIRED FOR ALL WATER LINES INSTALLED.
 - DIP SHALL BE POLY-WRAPPED
 - USE LOW PERMEABILITY SOILS WITHIN 10' OF ALL SANITARY AND STORM SEWER CROSSINGS.



UTILITY CROSSING TABLE

CROSSING	INVERT OF UPPER PIPE	ELEVATION	CROWN OF LOWER PIPE	ELEVATION
C.02	15" RCP SANITARY SEWER	935.75-	8" DIP WATER MAIN	934.14
-	-	-	-	-
-	-	-	-	-

FEHR GRAHAM
ENGINEERING & ENVIRONMENTAL

ILLINOIS
IOWA
WISCONSIN

OWNER/DEVELOPER:
CITY OF OELWEIN
20 2ND AVENUE SW
OELWEIN, IA 50662

PROJECT AND LOCATION:
2026 WATER SYSTEM
IMPROVEMENTS
OELWEIN, IOWA

DRAWN BY: JRA
APPROVED BY: JSB
DATE: 08/26/2025
SCALE: AS NOTED

REVISIONS		
REV. NO.	DESCRIPTION	DATE
1	SANITARY SEWER SEPARATION DISTANCES	9/17/25

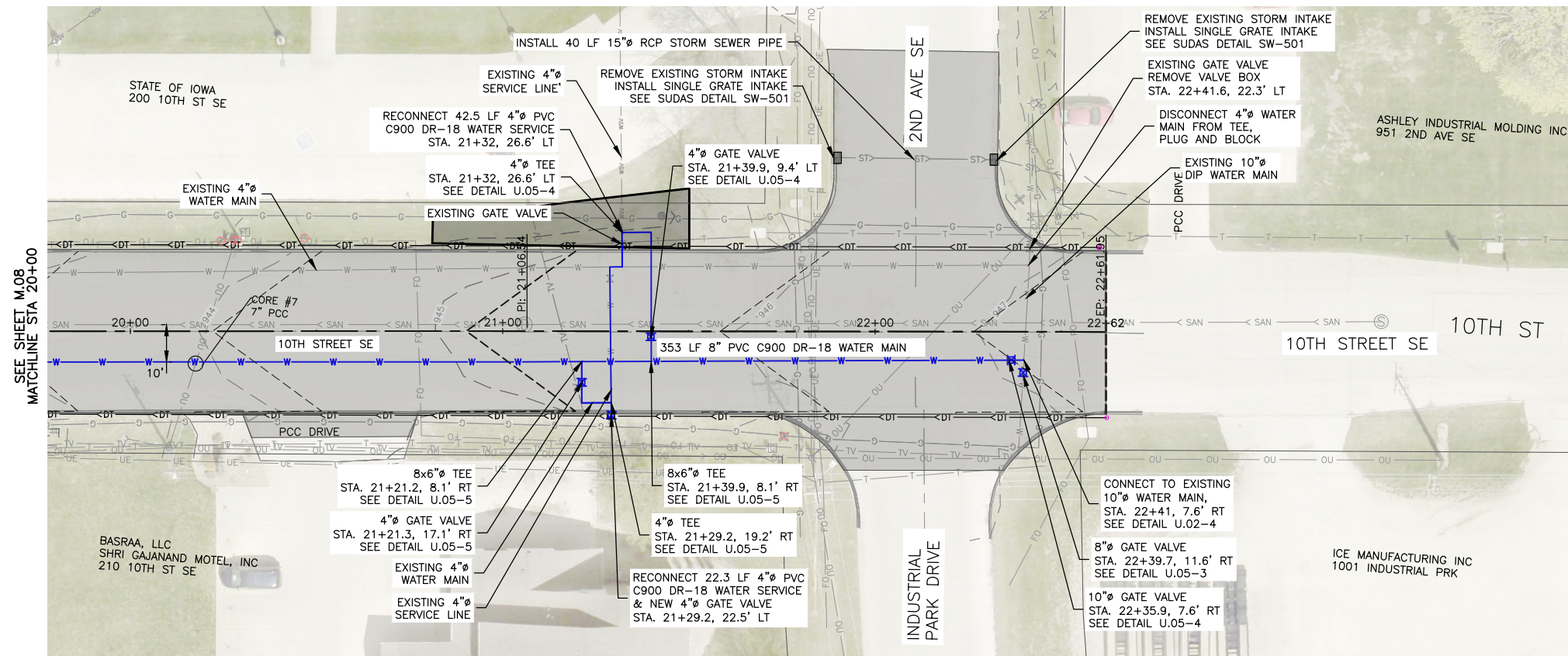
DRAWING:
PLAN AND PROFILE WATER MAIN 10TH ST
- DIVISION 3

SET TYPE: PERMIT SET

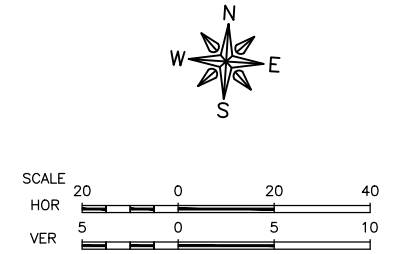
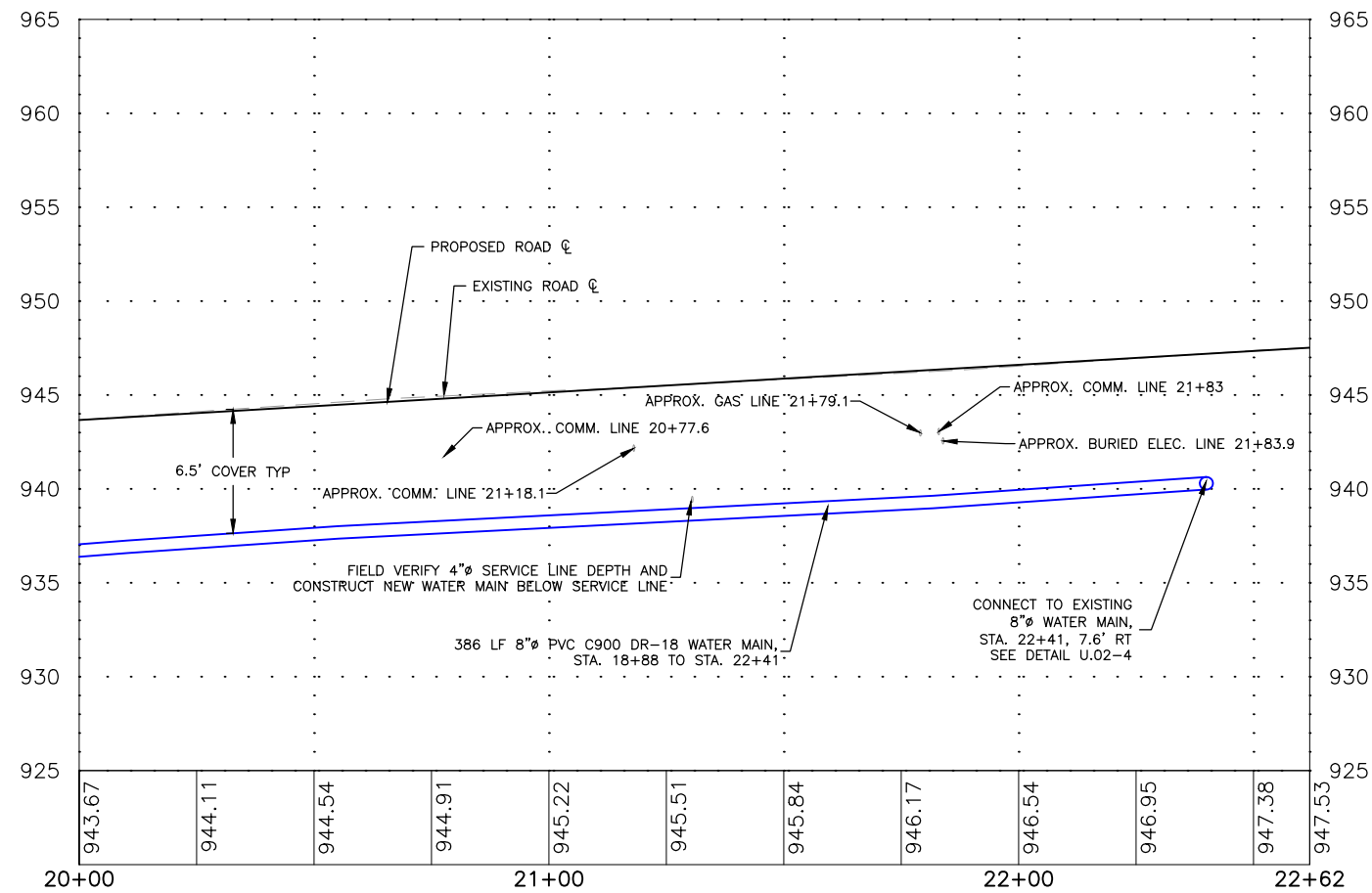
G:\C30\25\25-905\25-905 DESIGN 10th St SE & SW.dwg, M.09

JOB NUMBER:
25-905

SHEET NUMBER:
M.09



- NOTES:
- FIELD VERIFY SANITARY SEWER SERVICE LOCATIONS.
 - MAINTAIN MINIMUM 18" VERTICAL SEPARATION AND 10' HORIZONTAL SEPARATION BETWEEN SANITARY SEWER AND WATER MAINS.
 - FIELD VERIFY EXISTING WATER MAIN LOCATIONS.
 - FIELD VERIFY EXISTING WATER SERVICE SIZE.
 - CAP ENDS OF ALL WATER MAINS TO BE ABANDONED.
 - A TRACER SYSTEM WILL BE REQUIRED FOR ALL WATER LINES INSTALLED.
 - DIP SHALL BE POLY-WRAPPED
 - USE LOW PERMEABILITY SOILS WITHIN 10' OF ALL SANITARY AND STORM SEWER CROSSINGS.



FEHR GRAHAM
ENGINEERING & ENVIRONMENTAL

ILLINOIS
IOWA
WISCONSIN

OWNER/DEVELOPER:
CITY OF OELWEIN
20 2ND AVENUE SW
OELWEIN, IA 50662

PROJECT AND LOCATION:
2026 WATER SYSTEM
IMPROVEMENTS
OELWEIN, IOWA

DRAWN BY: JRA
APPROVED BY: JSB
DATE: 08/26/2025
SCALE: AS NOTED

REVISIONS		
REV. NO.	DESCRIPTION	DATE
1	SANITARY SEWER SEPARATION DISTANCES	9/17/25

DRAWING:
PLAN AND PROFILE WATER MAIN 10TH ST
- DIVISION 3
SET TYPE: PERMIT SET
G:\C30\25\25-905\25-905 DESIGN 10th St SE & SW.dwg, M.10

JOB NUMBER:
25-905
SHEET NUMBER:
M.10