

The first picture shows an existing setup that I like.



The first window goes into non loading bearing block wall. The block is 16*8. The window would need to be 64 inches wide 32 inches tall. We would need a service panel in this window. It would be at counter height.

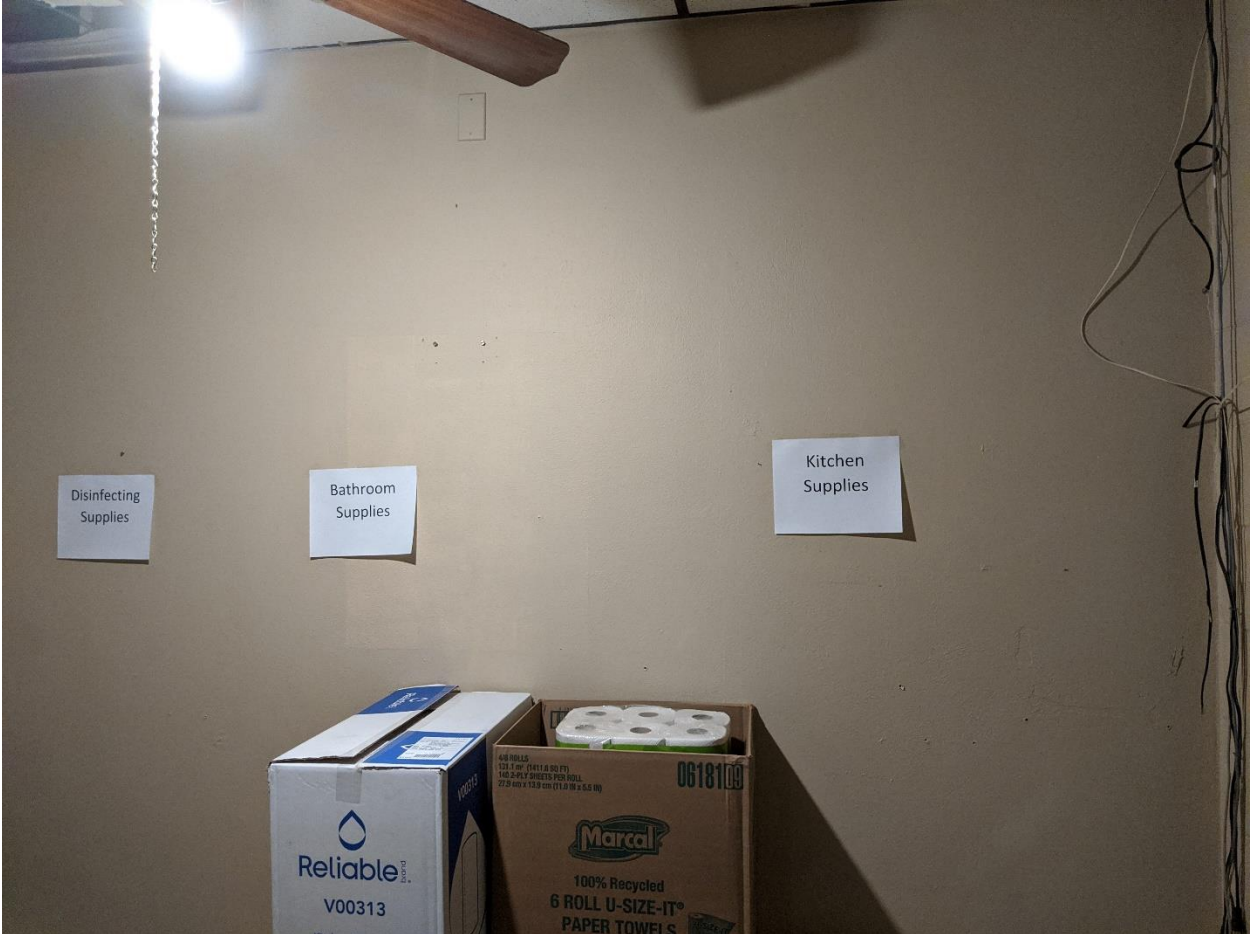


The second window would be another service window. This wall is a non-load bearing sheet rock stud wall. Same dimensions as the window above.



The two service windows would ideally be some type of safety glass.

The third window would be so that one office could see the larger office. Just for viewing and not for serving. If you have a recommendation or a standard size, I am okay with that. Otherwise, 64*32 works for me.

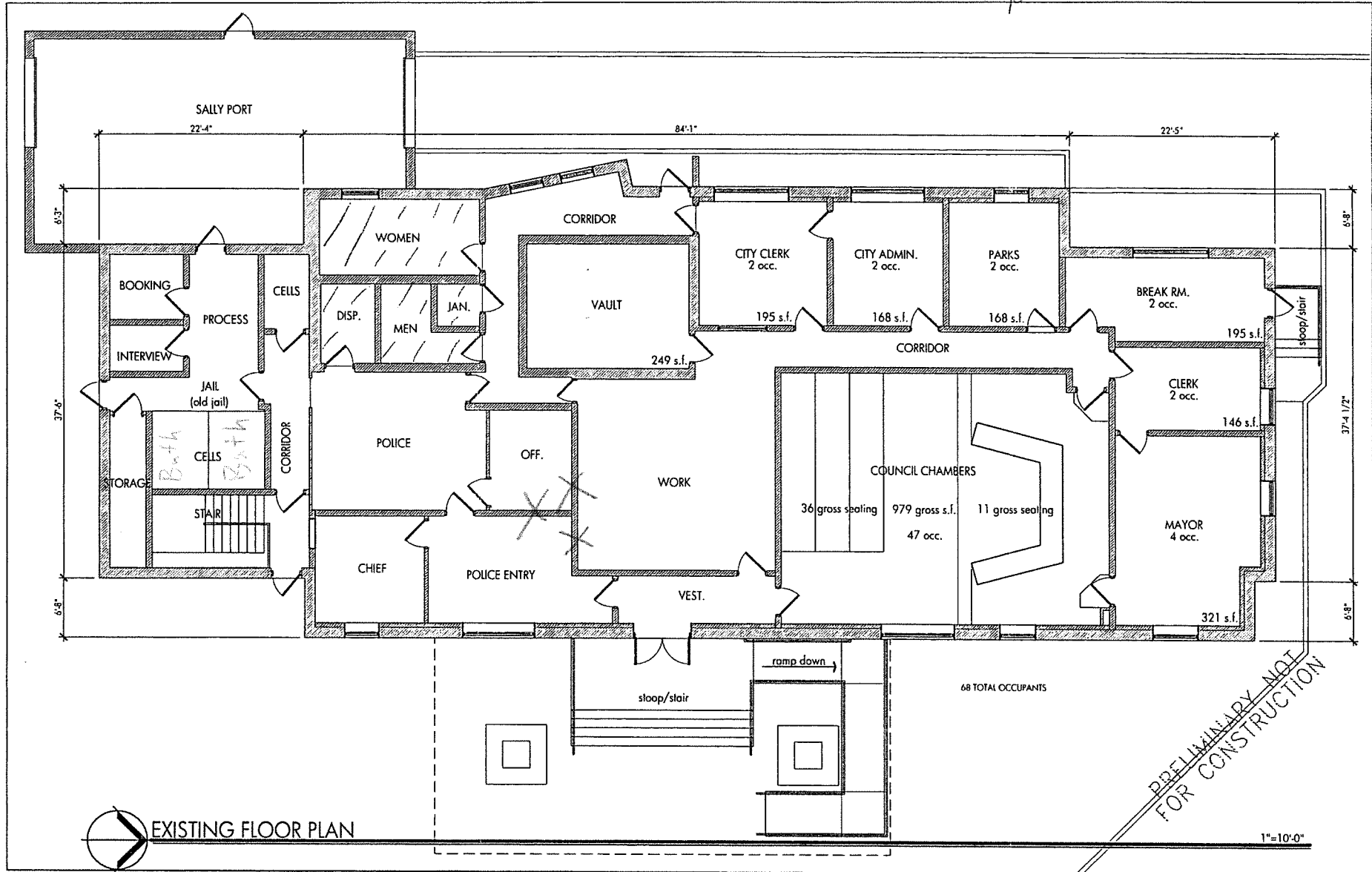




The last option would be for a new main service window. It would match the other service windows and be removing an older window. This wall is non-load bearing block. Same size as the other service windows.

Hatched Area to remain undisturbed - NEVER Renovation

COVID-19 update



EXISTING FLOOR PLAN

PRELIMINARY NOT FOR CONSTRUCTION

Sheet set

© 2015
Morris Goodner
Architects P.C.

CITY OF ORWEN
CITY HALL TESTING
20 SECOND AVENUE SW
ORWEN, IOWA

MGA
MARTIN GARDNER
ARCHITECTURE

700 11TH STREET
SUITE 201
MASON, IOWA
52302
(319) 377-7692

11502 390TH ST
STRAWBERRY POINT
IOWA 52074
(563) 933-4712

10605.02

1"=10'-0"