



October 13, 2020

City of Oelwein
20 2nd Avenue SW
Oelwein, IA 50662

Attn: Mr. Dylan Mulfinger
Subj: Restroom Project

Dylan,

We propose to furnish all material, labor, and equipment required to turn two (2) existing jail cells into public restrooms in accordance with your request, our site visit, the attached sketch, and the following description of work for the lump sum amount of \$40,713.00.

Description of Work

1. Building Permit ... none required
2. Demolition Work
 - a. Remove steel privacy screens
 - b. Remove concrete bed bases
 - c. Remove steel ceiling
 - d. Prep floor for new floorcovering
 - e. Plumbing demolition
 - f. Electrical demolition
3. Patch masonry at plumbing wall as needed
4. Doors, Frames, and Finish Hardware
 - a. 3' x 7' flush hollow metal doors with hollow metal frames
 - b. Hardware – privacy locksets, hinges, closers with stops
5. Drywall partition at front wall of restrooms
 - a. Metal studs, sound insulation, and 5/8" gypsum board at each side
6. Acoustic Ceiling
 - a. 2' x 2' acoustic ceiling system with fine fissured tile
7. Resilient Flooring
 - a. Skim coat existing floor
 - b. 12' x 12" vinyl tile at restrooms
 - c. 6" vinyl base in restrooms and 4" vinyl base at hallway side of new wall
8. Painting
 - a. Existing masonry walls in restrooms
 - b. New drywall partition
 - c. Hollow metal doors and frames

9. Accessories

- a. Grab bar sets in each restroom – 18", 36", and 42"
- b. 24 x 36 mirrors
- c. Sanitary napkin disposal at Women's Restroom
- d. Paper towel dispensers
- e. Toilet paper dispensers
- f. Liquid soap dispensers
- g. Handicap signs
- h. **Note** – If the owner's paper vendor supplies the dispensers, we will provide a credit for any accessories we wouldn't need to furnish.

10. Mechanical Work

- a. Wall mounted sinks with sensor operated faucets
- b. Water closets with sensor operated flush valves
- c. Restroom exhaust fans
- d. Floor drains
- e. New supply air diffusers

11. Electrical

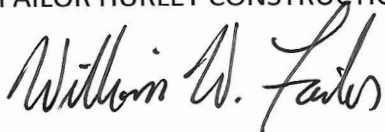
- a. New 2' x 2' LED Light in each restroom
- b. New switch in drywall partition to control lights and exhaust fans
- c. Wiring to be completed using existing circuits

12. Schedule – we anticipate the project duration to be approximately 1 month. The start date would be coordinated around material deliveries ... approximately mid November.

We trust our proposal meets with your approval and we will have your early order to proceed. Please feel free to contact us if you have any questions.

Sincerely,

FAILOR HURLEY CONSTRUCTION

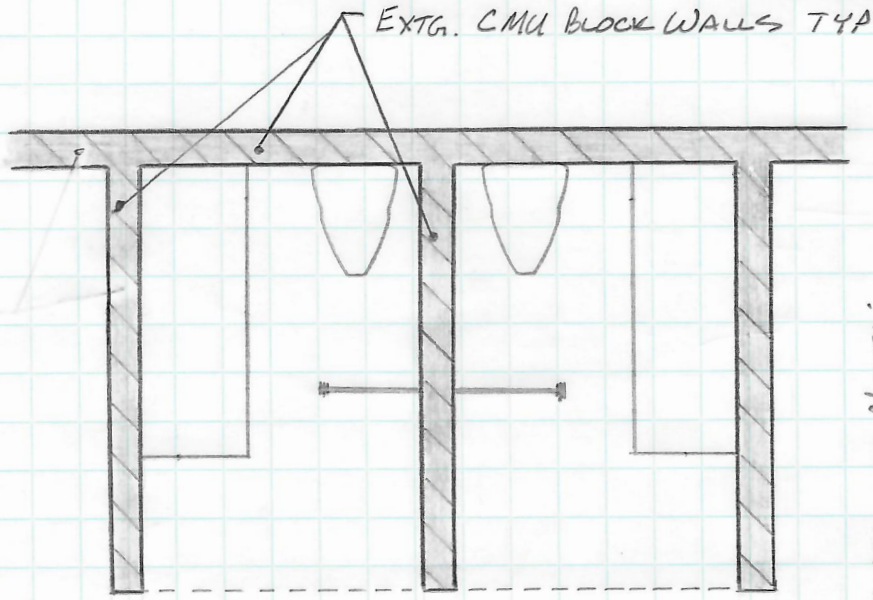


William W. Failor

RESTROOM PROJECT - CITY HALL
CITY OF DELWEIN

Fallor Hurley Construction
3337 Marnie Ave.
Waterloo, IA 50701

- E. VCT FLOORING w/ 6" VINYL BASE
- F. WALL MOUNTED SINK
- G. WALL MOUNTED TOILET
- H. EXHAUST FAN
- I. LIGHT FIXTURE

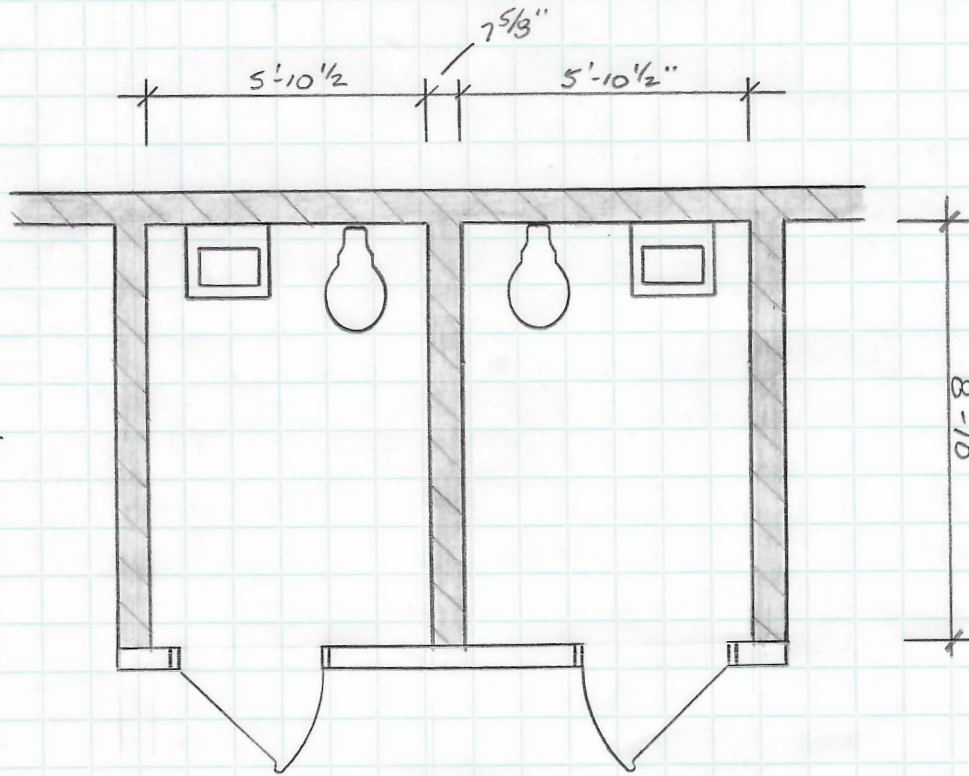


DEMOLITION NOTES:

- 1 REMOVE STEEL SCREENS
- 2 REMOVE STEEL CEILING
- 3 REMOVE CONC./BLOCK BEARS
- 4 REMOVE PLUMBING FIXTURES
- 5 REMOVE LIGHTS
- 6 PREP FLOOR FOR NEW VCT FLOORING

NEW CONSTRUCTION NOTES:

- A. HOLLOW METAL DOORS & FRAMES
 - PRIVACY LOCK, BB HINGES, CLOSER w/ STOPS
- B. DRYWALL PARTITION - MTL. STUDS, INSULATION, 5/8 GYP. BO.
- C. 2' x 2' ACOUSTIC CEILING - FISSURED TILE
- D. PAINTING - EXTG. BLOCK WALL, NEW DRYWALL, HM DOORS/FRAMES



SCALE: 1/4" = 1'-0"