

# Oelwein Park and Recreation

---

## Master Plan

2024



## Mayor

Brett Devore

## City Administrator

Dylan Mulfinger

### City Council

- ❖ Matt Weber 1<sup>st</sup> Ward
- ❖ Dave Lenz 2<sup>nd</sup> Ward
- ❖ Lynda Payne 3<sup>rd</sup> Ward
- ❖ Dave Garrigus 4<sup>th</sup> Ward
- ❖ Tom Stewart At Large
- ❖ Karen Seeders At Large

### Park and Recreation Committee

- ❖ Dave Garrigus
- ❖ Joseph Bouska
- ❖ Dr. Tim Gearhart
- ❖ Connie Jorgensen
- ❖ Mike Meska
- ❖ Dan Stasi

### Trails Committee

- ❖ Sue Crandall
- ❖ Sandie Graf
- ❖ Marcia Woodraska
- ❖ Wayne Saur
- ❖ Mark Levin
- ❖ Larry Murphy

### Tree Board

- ❖ Ron Lenth
- ❖ Kyle Scheel
- ❖ Jeff Milks
- ❖ John Fox

### Wellness Steering Committee?

- ❖ Dylan Mulfinger
- ❖ Jeremy Logan
- ❖ Clint Berryman
- ❖ Travis Druvenga
- ❖ Josh Ehn
- ❖ Candace King

### Park Superintendent

- ❖ Joshua Johnson MA

### Recreation Coordinator

- ❖ Jessica Burkhart

- ❖ Introduction
- ❖ Vision / Mission Statement / Goals
- ❖ Strategic Planning
- ❖ Park Planning
- ❖ Recreation Programming
- ❖ Oelwein Municipal Urban Trail System
- ❖ Aquatics Programming
- ❖ Cemeteries
- ❖ Tree Stewardship
- ❖ Public Playground Policy
- ❖ Implementation
- ❖ Key Initiatives
- ❖ Action Plan
- ❖ Appendices



## **Vision**

Complete the Parks and Recreation system by anticipating future needs of patrons, providing excellent parks, trails and recreational facilities.

## **OPRD Mission Statement**

It is the mission of the Oelwein Parks and Recreation Department to create recreational opportunities and provide consistent, reliable public service; creating diverse programs and services to promote community involvement; and being a leader in recreation and leisure services while preserving our facilities for future generations.

## **Goals**

1. Make City Park the premiere urban park in Northeast Iowa.
2. Expand upon the existing trail ways to connect all quadrants of the community and make connections to other regional trail systems.
3. Continue to update and modernize current park facilities and offer equal opportunities for each facility.
4. Have the safest playgrounds and facilities available.
5. Encourage healthy community lifestyles by expanding recreational programming that changes due to the needs of the public.



**Enhance and Grow Recreation Opportunities**  
 Oelwein's residents highly appreciate the city's walkable environment and the existing trail network with expressed desire to expand it. Additionally, residents expressed interest in park improvements and city-wide landscaping and beautification efforts.



**Improve the Transportation Network and Infrastructure**  
 Transportation and connectivity was a recurring theme in necessary improvements for the City of Oelwein. Residents expressed particular concern about the lack of connectivity between East and West Oelwein including the deterioration of the Charles Street Viaduct. Overall infrastructure improvements and sidewalk expansion were also expressed as necessary improvements.

## SWOT Analysis: Mobility

### Strengths

- Great sidewalks downtown
- Great path/trail network
- Very easy to access downtown and amenities throughout community
- City's location at junction of two highways - lots of pass-through traffic
- Traffic moves smoothly through downtown

### Opportunities

- Expand trail system
- Increase accessibility
- Seek additional funding to improve road system
- Seek additional funding to update viaduct/mobility between east and west sides of town

## SWOT Analysis: Beautification

### Strengths

- Nice existing parks
- New mural at the quilt shop
- Community library
- Historic buildings
- Holding people accountable for maintaining their properties has been effective
- Downtown streetscape is wonderful, very walkable

### Opportunities

- Upgrade downtown and parks
- Clean up dilapidated buildings/properties
- Increase tourist/destination interest
- Enhance landscaping
- Continue enhancing downtown storefronts



### Parks & Recreation

**Goal 1:** Provide a robust recreation system to all residents and visitors.

**Goal 2:** Develop and support a comprehensive system of safe, aesthetically pleasing, and useful open spaces and trails that serve the entire community.

### Background

Oelwein’s recreation ranks very high on the list of contributions towards an improved quality of life. These recreational amenities provide residents and visitors with a higher quality of life and will help keep the county growing and thriving. Additionally, recreational opportunities add economic value and positively affect property value, tourism, and commerce. The following are goals and strategies to support recreation, parks, and trails throughout Oelwein.

## Parks & Recreation Goals & Strategies

**Goal 1:**  
Provide a robust recreation system to all residents and visitors.

**Goal 2:**  
Develop and support a comprehensive system of safe, aesthetically pleasing, and useful open spaces and trails that serve the entire community.

**Strategy 1a:**  
Diversify recreational facilities to expand opportunities for numerous activities.

**Strategy 1b:**  
Prioritize distribution of adequate green space in future development.

**Strategy 2a:**  
Establish and continue partnerships with Fayette County, the State of Iowa, adjacent cities, school districts, churches, and civic organizations to provide recreation facilities and programs.

**Strategy 2a:**  
Improve accessibility of recreation facilities and programs for residents and visitors.

**Strategy 2c:**  
Devise a comprehensive park and recreation assessment and plan that evaluates impacts of the Otter Creek tributary on existing parks and potential greenspace. Evaluate opportunities to make improvements or relocate City facilities located in floodplain areas.



<b>Goal 1:</b> Provide a robust recreation system to all residents and visitors.				
<b>Strategy 1a:</b> Diversify recreational facilities to expand opportunities for numerous activities.		<b>Strategy 1c:</b> Prioritize distribution of adequate green space in future development.		
<b>Action Item 1a1</b> Develop a comprehensive inventory of current and desired recreational facilities and activities.	2	PW, PR, PRC	<b>Action Item 1c1</b> Identify areas deficient in recreational space.	1 CC, PZC, PR, PRC
<b>Action Item 1a2</b> Establish a means to fund current and additional recreational opportunities for residents and individuals.	2	AD, CC, PR, PRC	<b>Action Item 1c2</b> Create development standards to include adequate green space in future land use plans.	1 CC, PZC, PR, PRC

## Priority Levels

1	2	3	4
Urgent (1-3 years)	Short-term (3-10 years)	Long-term (10-20 years)	Ongoing

<b>Goal 2:</b> Develop and support a comprehensive system of safe, aesthetically pleasing, and useful open spaces and trails that serve the entire community.				
<b>Strategy 2a:</b> Establish and continue partnerships with government entities, churches and civic organizations to provide recreation facilities and programs.		<b>Strategy 2a:</b> Improve accessibility of recreation facilities and programs for residents and visitors.		<b>Strategy 2b:</b> Devise a comprehensive park and recreation assessment and plan that evaluates impacts of the Otter Creek tributary on existing parks and potential greenspace.
<b>Action Item 2a1</b> Identify opportunities for and encourage involvement in regional trail development.	2	AD, CC, PR, PRC	<b>Action Item 1b1</b> Evaluate physical and financial accessibility to recreational services for residents and visitors of all socioeconomic situations.	1 AD, CC, PR, PRC, CAD
<b>Action Item 2a2</b> Coordinate Oelwein's transportation and recreation plans with those of the region to optimize projects and development.	2	AD, CC, CDD, PR, PRC, IDOT	<b>Action Item 1b2</b> Engage community members to help guide recreational planning and development.	2 AD, CC, PR, PRC
			<b>Action Item 2b1</b> Identify alternatives for existing parks and potential recreation areas that are impacted by flooding of the Otter Creek tributary, including Wings park.	1 AD, CC, PR, PRC, IDNR
			<b>Action Item 2b2</b> Consider redevelopment, relocation, and any other feasible flood mitigation tactics to reduce impact on park and recreation areas.	2 AD, CC, PR, PRC, IDNR

### Potential Partners

- AD:** Oelwein Administration Department
- PZC:** Oelwein Planning & Zoning Commission
- CC:** Oelwein City Council
- BOA:** Oelwein Board of Appeals
- ZBOA:** Oelwein Zoning Board of Adjustment
- CDD:** Oelwein Community Development Department
- CAD:** Oelwein Chamber & Area Development
- CSC:** Oelwein Civil Service Commission
- PR:** Oelwein Parks and Recreation Department
- PRC:** Oelwein Parks & Recreation Commission

- PW:** Oelwein Public Works Department
- ES:** Oelwein Emergency Services (Fire and Police)
- PL:** Oelwein Public Library
- LBT:** Oelwein Library Board of Trustees
- WC:** Oelwein (Williams) Wellness Center
- TB:** Oelwein Tree Board
- AB:** Oelwein Airport Board
- IDNR:** Iowa Department of Natural Resources
- IDOT:** Iowa Department of Transportation





## 1-5 Year Development and Improvement Plans

### AQUATIC FACILITIES:

- Complete the upgrades included with the bond project including:
  - Shelter construction, Umbrella installations, Slide pump/motor
  - Upgrade and picnic table replacement.
  - Replace main filtration system and run effluent to sanitary sewer
- Expand programming
- Replace deck furniture
- Institute online payment system for the facility

### TRAILS:

- Design and construct trails as funds allow.
- Acquire easements from landowners as needed.
- Maintain existing facilities.
- Complete segment 2
- Raise funding for segments 4/5
- Complete segments 4/5 to City Park
- Crack seal east asphalt trail

### PARKS:

- Build facilities back into red gate park
- Develop City Park into the greatest park in NE Iowa
- Update fencing at diamond 1 or 2 at Wings Park
- Playground equipment replacement at Platt Park
- Finish ash tree removal
- Plant more trees in all parks
- Institute online payment system for shelter rentals
- Develop and implement playground safety policy
- Install signage at all playground equipment locations

### RECREATION PROGRAMMING/WELLNESS CENTER:

- Increased participation
- Structured coaches meeting
- Expectations of coaches and referees
- Development of structured practices for programs

### CAMPGROUND FACILITIES:

- Build cabins for year-round facility use
- Purchase new shed facility to house, mower, split wood, kayaks and paddleboards
- Seal chip the road around the facility
- Institute online payment system for the campground, WIFI
- Replace all electrical receptacles

### CEMETERY:

- Continue to upgrade equipment as needed
- Chip seal roads as needed
- Convert records to digital format

### TREES:

- Build gravel bed for bare root trees
- Continue trimming recently planted trees
- Plant as many trees as possible with donations and grants
- Continue to receive Tree City designation each year
- Continue to expand programming

## 6-10 Year Development and Improvement Plans

### AQUATIC FACILITIES:

- Replace the shell to the pool
- Continue to make upgrades to the facility year to year
- Paint the shower house interior
- Install skate park in old mini golf area
- Play structure painting

### TRAILS:

- Complete construction of trails as funds allow.
- Acquire easements from landowners as needed.
- Maintain and replace existing facilities as needed.

### PARKS:

- Replace/upgrade equipment at Levin Park
- Install splash pad at Reidy Park
- New shelter at Wings Park between diamonds one & two
- Make improvements City Park/Lake Oelwein
- Replace main signs at all Parks
- Update playground equipment
- Install lighting at diamond two
- Convert lighting at Wings diamonds to LED
- Cold storage building by park maintenance building

### RECREATION PROGRAMMING/WELLNESS CENTER:

- 
- 
- 
- 

### CAMPGROUND FACILITIES:

- Increase amenities
- Update playground equipment

### CEMETERY:

- Replace C-1 pickup
- Mini excavator

### TREES:

- Continue to replace ash trees removed
- Continue trimming recently planted trees
- Plant as many trees as possible with donation and grants
- Continue to receive Tree City designation each year
- Continue to expand programming to satisfy growth award

## 11-25 Year Development and Improvement Plans

### AQUATIC FACILITIES:

- Replace slide
- Assess overall feasibility of facility

### CAMPGROUND FACILITIES:

- Continue to add amenities that suit the growing trends
- Replace shelter
- Upgrade shower house
- Install sewer system to each pad

### TRAILS:

- Design and construct future trails to join regional trails.
- Acquire easements from landowners as needed.
- Maintain and replace existing facilities.

### PARKS:

- Upgrade/repair playground equipment as needed
- Install lighting at complex diamonds
- Install bike track at Reidy Park
- New bathroom at diamond one in Wings Park

### RECREATION PROGRAMMING/WELLNESS CENTER:

- 1
- 2
- 3
- 4

### CAMPGROUND FACILITIES:

- Continue to add amenities that suit the growing trends
- Replace shelter
- Upgrade shower house
- Install sewer system to each pad

### CEMETERY:

- Replace three buildings with one larger building

### TREES:

- Continue trimming recently planted trees
- Plant as many trees as possible with donation and grants
- Continue to receive Tree City designation each year
- Continue to expand programming to satisfy growth award

## Improvements:

- ❖ Ice rink north side of log cabin
- ❖ Benches
- ❖ Upgrade drinking fountain
- ❖ Tree plantings
- ❖ Farmers market Improvements
  - ❖ Realignment
  - ❖ Electrical panel

## Improvements:

- ❖ Modern restroom near front playground area
- ❖ Playground equipment replacement / upgrades
- ❖ Trail connection
- ❖ Lake fountain
- ❖ Tree plantings
- ❖ Clear lake front areas
- ❖ Beach area near campground
- ❖ Log cabins built in campground area
- ❖ Sewer run to all campsites

## Appreciation Park



## City Park / Campground



## Improvements:

- ❖ Prairie Planting
- ❖ Playground equipment replacement / upgrades
- ❖ Shelter
- ❖ Tree plantings
- ❖ Trail stretching station

## Improvements:

- ❖ Playground equipment replacement / upgrades
- ❖ Trail connections
- ❖ Prairie plantings
- ❖ Benches
- ❖ Tree plantings
- ❖ Stretching station

## Levin Park



## Platt Park



## Improvements:

- ❖ Remove primitive toilet facilities
- ❖ Playground equipment replacement / upgrades
- ❖ Bocce ball court updates
- ❖ Tree plantings

## Improvements:

- ❖ Playground equipment replacement / upgrades
- ❖ Trail connections
- ❖ Splash pad
- ❖ Benches
- ❖ Bike Track
- ❖ Shelter
- ❖ Tree plantings

## Redgate Park



## Reidy Park



## Improvements:

- ❖ Soccer fields
- ❖ Playground equipment replacement / upgrades
- ❖ Trail connections
- ❖ Ball diamond lighting
- ❖ Solar panels
- ❖ Tree plantings

## Improvements:

- ❖ Trail connections
- ❖ Tree plantings
- ❖ Benches
- ❖ Art additions
- ❖ Military piece

## Sports Complex



## Veterans / Chrysler Park



## Improvements:

- ❖ Baseball field fencing diamonds 1 & 2
- ❖ Backstop overhangs
- ❖ Playground equipment replacement / upgrades
- ❖ Trail connections
- ❖ Ball diamond lighting diamond 2
- ❖ Convert existing diamond lighting to LED
- ❖ Tree plantings
- ❖ New shelter between diamonds 1 & 2

## Wings Park





Recreation

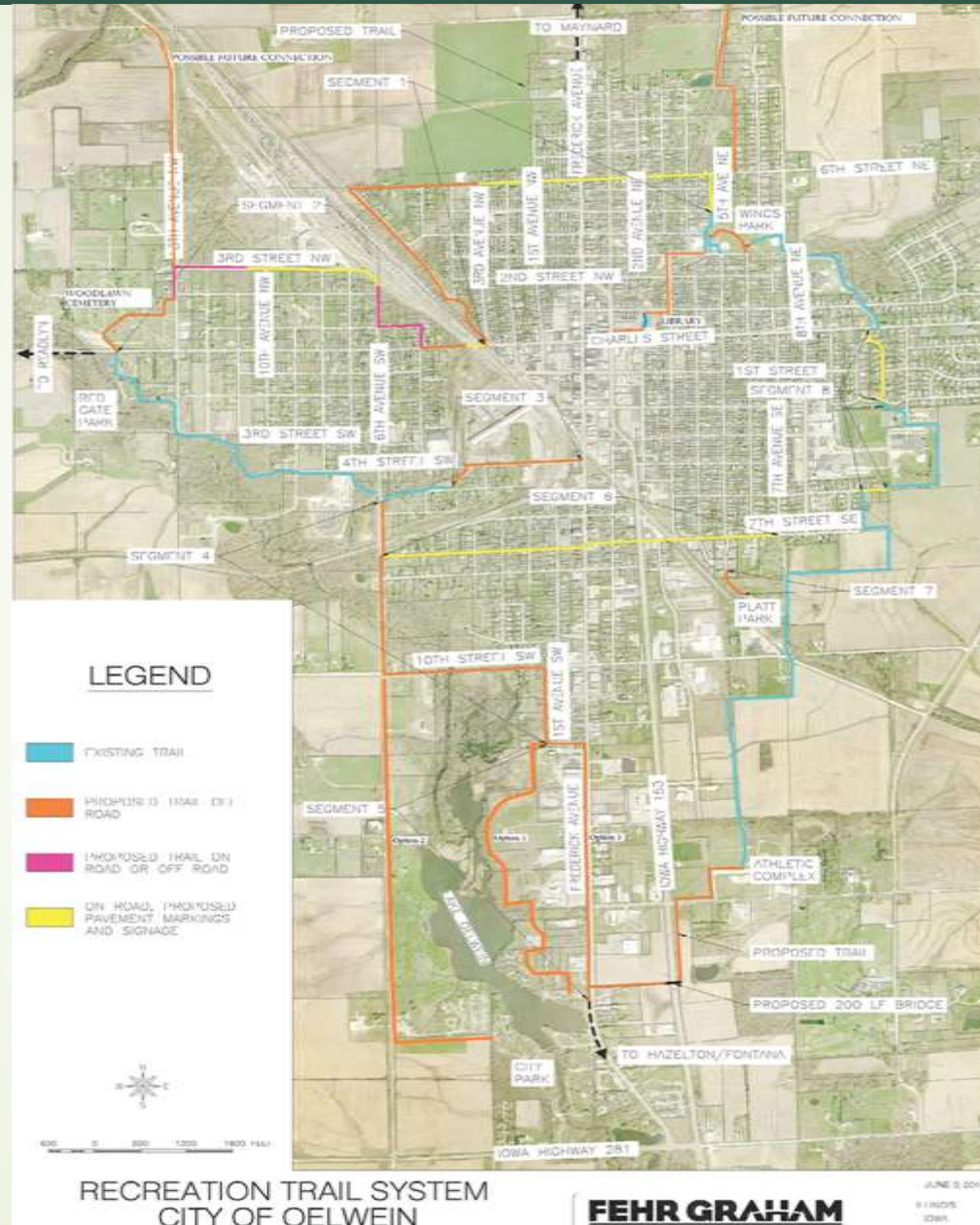


Wellness Center



## Oelwein Municipal Urban Trail System Concept

A citywide network of non-motorized, multi-use pathways that are used by bicyclists, walkers and runners for both transportation and recreation purposes.



## Health Benefits of Trail Use

- Improved heart health
- Eases joint pain
- Decreased risk of diseases
- Reduced stress and improved mood
- Sharpens mental capacity
- Improved balance/coordination
- Improves sleep
- Social benefits
- Enjoy nature
- Improves circulation
- Strengthen bones/muscles
- Weight loss
- Lowers Alzheimer's risk
- Boosts immune function



## Trail Goals

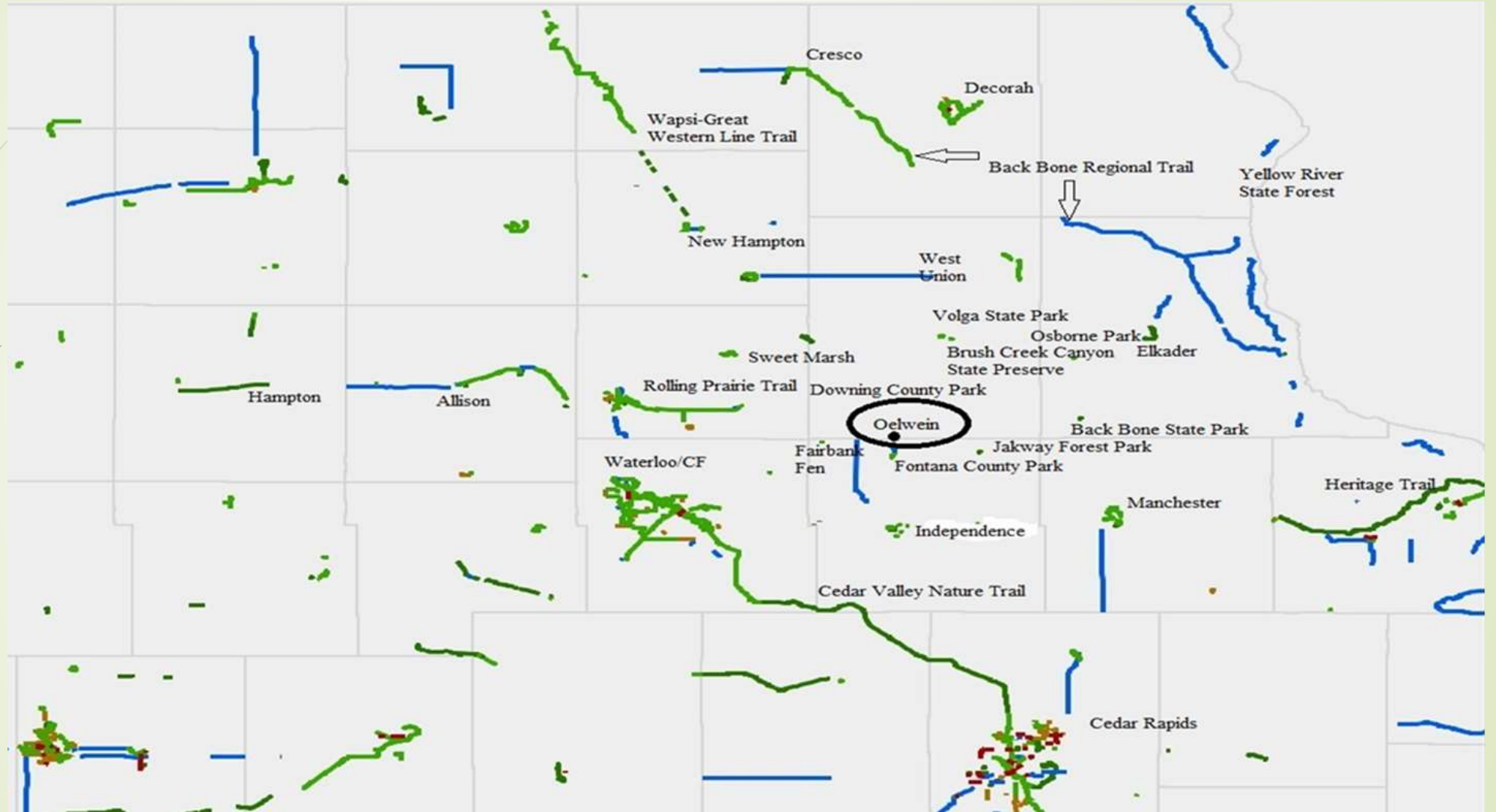
- ❖ Acquire the necessary easements for future trail growth
- ❖ Ensure that all existing trails are maintained and on a regular maintenance schedule.
- ❖ Update and add signage where needed.
- ❖ Address any safety or ADA accessibility issues in the trail system.
- ❖ Implement aesthetic improvements along trails including plantings
- ❖ Conduct a trails usage survey
- ❖ Increase access to create a highly accessible, citywide network of comfortable trail facilities that connects all quadrants, including schools, parks, library, and the downtown.
- ❖ Connect existing urban trails, incorporate sidewalk network and expand trail system to regional trail systems.
- ❖ Ensure adequate trail width (8 ft.) to accommodate both foot and bicycle traffic.
- ❖ Incorporate trail amenities and features that create unique additions and greenways.
- ❖ Develop and maintain a high-quality bicycle network, including both bikeways and stretching stations.



## Effects of trail implementation

- ❖ Follows image set by city council members & comprehensive plan
- ❖ Promotes wellness among community members
- ❖ Bring in tourism dollars to community
- ❖ Trails improve property values
- ❖ Trails boost community pride and appeal

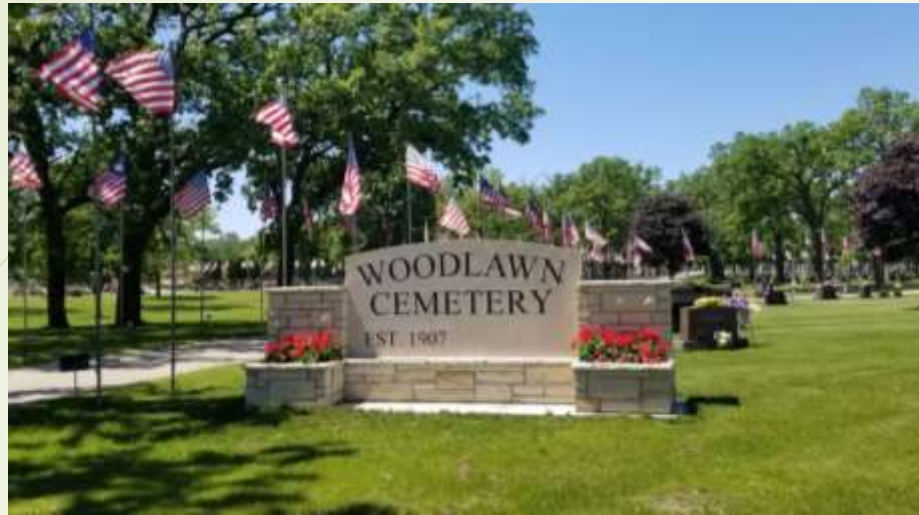
# Regional Trail System Connectivity





## Future endeavors

- ❖ Continue expansion of programming
- ❖ Replace the shell to the pool
- ❖ Continue to make upgrades to the facility year to year
- ❖ Replace slide when needed
- ❖ Assess overall feasibility of facility
- ❖ Skate park in old mini golf area



## Future endeavors

- ❖ Continue with equipment upgrades as needed
- ❖ Street maintenance
- ❖ Digital conversion of records
- ❖ Combine three buildings into one efficient building



## Trees Planted:

2016	39	2020	66
2017	69	2021	68
2018	39	2022	50
2019	254	2023	<u>117</u>
			702

## TREE STEWARDSHIP

The goal of the Oelwein Tree Board is to expand a robust and diverse urban forest. Trees can provide a multitude of benefits to the community, and sound management allows a community to best take advantage of these benefits. Management is especially important considering the serious threats posed by forest pests such as the emerald ash borer (EAB).

## Achievements

- ❖ Iowa DNR Street Tree Survey
- ❖ 2016 Hosted operation ReLeaf -distributing 240 trees to the public
- ❖ 2018 street tree survey with Iowa DNR Forestry department
- ❖ 2022 park and cemetery tree survey with Iowa DNR Forestry department
- ❖ Tree City Award - 2017, 2018, 2019, 2020, 2021, 2022
- ❖ Growth Award - 2020, 2022
- ❖ 2019 Governors volunteer award
- ❖ 2021 Outstanding community organization - Iowa Urban Tree Council

Grant Dollars received: \$43,089.84



## Public Playground Management and Operation Policy Statement

In the continuing effort by the City of Oelwein to provide quality, well-maintained, clean, and safer parks and facilities for the public, the City of Oelwein has developed the following standard operating procedures to protect and preserve its unsupervised public playground facilities and its users. This program may only be accomplished through a commitment to a public playground management and operation program that assures that every attempt will be made to eliminate or mitigate playground safety concerns while not totally eliminating the element of risk or challenge, which is an essential part of a child's development and a well-designed children's play and learning environment.

All playgrounds shall be designed, installed, inspected, and maintained in substantial compliance of current CPSC Guidelines, ASTM voluntary playground safety standards and guides, and where applicable meets the intent of the DOJ 2010 ADA Standards for Accessible Design.



### Standard of Care

To guarantee the continued success of this program, the following guidelines will be adhered to by City of Oelwein Park and Recreation department and staff:

- All playgrounds will be subject to the playground management and operation program guidelines.
- All equipment shall be installed according to manufacturer specifications.
- The City of Oelwein shall provide reasonable resources to ensure prudent and timely inspections and repairs as determined necessary by the playground program.
- All play equipment shall be inspected, repaired, and maintained by the City of Oelwein's employees or independent contractor on a regular basis, with the necessary written documentation.
- All playground equipment purchasers, installers, inspectors, and maintenance employees performing repairs shall be trained in accordance with the City of Oelwein's public playground safety-related training program, in order to maintain the playground equipment in substantial compliance with the current local standard of care.
- All equipment shall be purchased and certified in writing to the International Playground Equipment Manufacturers Association (IPEMA)\* certified playground equipment program or any other third-party certification program with adequate product liability insurance, so long as it is in writing from an authorized manufacturer's officer.
- Any equipment that is not specifically and prescriptively addressed by the current performance specifications for specific equipment types shall have documented by the equipment designer and manufacturer that it complies with the current ASTM F1487 Standard and/or has had a hazard identification and risk assessment completed by a qualified person or persons.
- All new play areas shall meet the minimum DOJ 2010 ADA Standards for Accessible Design.



## Key Initiatives

### Park Development

- Develop parks to create an integrated park and open space system.

### Equity and access

- Ensure that all residents in Oelwein have equal access to inclusive parks and healthy recreation opportunities that serve all ages and abilities in the City.

### Trail connectivity

- Create a walkable, bike-able, and interconnected city by providing a network of bicycle and pedestrian trails.

### Recreation diversity

- Create unique and vibrant recreation facilities that reflect the character, identity, and needs of the community.

### Activity

- Facilitate events, programs, sports, and indoor recreation activities to support community health, fitness, development, and lifelong learning.

### Stewardship

- Manage and maintain Oelwein's parks and recreation assets through good stewardship, proactive asset management, and the wise use of resources to support a sustainable, resilient, safe, and comfortable park system.

### Collaboration

- Engage residents, partners, volunteers, local businesses, and other agencies in enhancing parks and recreation opportunities.

### Investment

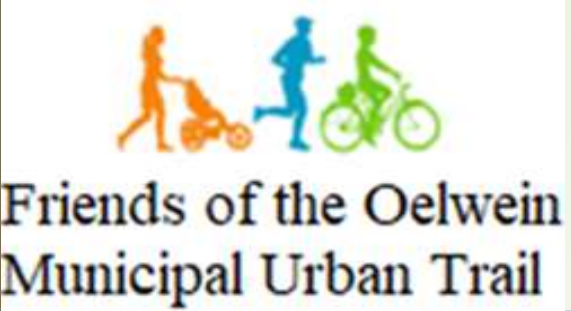
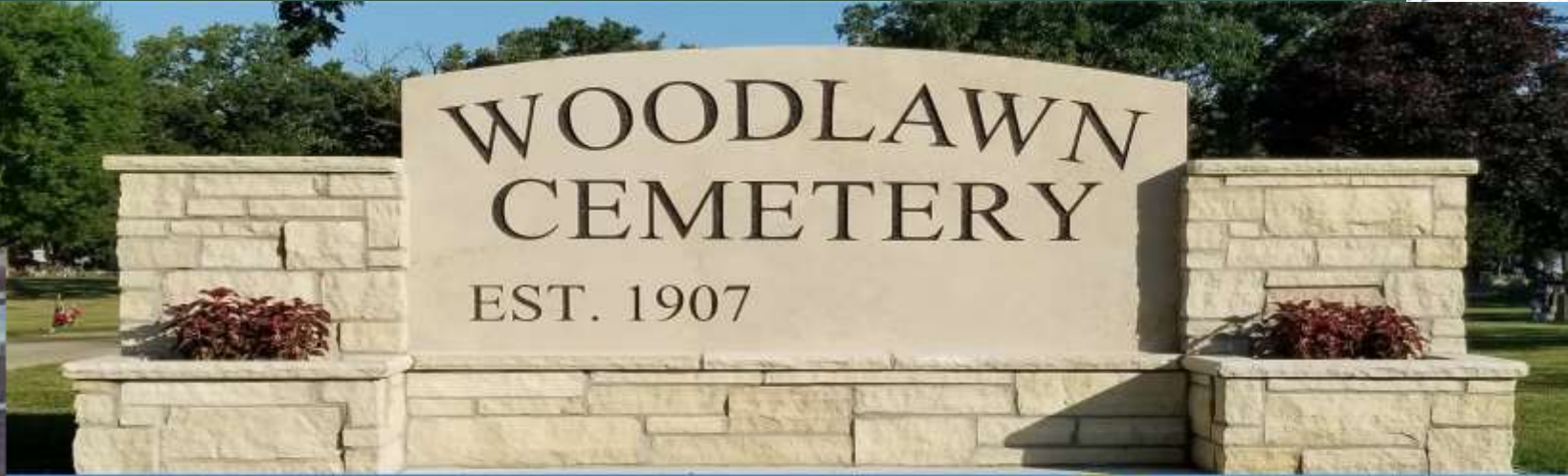
- Diversify funding, generate revenues, and support the capital and operational investment needed to enhance the park and recreation system.



## Action Plan

1. Prioritize maintenance and asset management.
2. Increase fees for new development and replacement.
3. Follow guidelines of the public playground policy.
4. Streamline programming by implementing an online payment system.
5. Explore all grant opportunities along with public and private support.
6. Create a wide range of recreational opportunities for the public as needed.
7. Develop and maintain the Oelwein Municipal Urban Trail System.
8. Update joint-use agreements with the Oelwein Community School District (OCSD).
9. Extend cost recovery recommendations to new programs and services.






# Completed Projects






---

 Joshua Johnson MA

 319 283 0544

 [jjohnson@cityofuelwein.org](mailto:jjohnson@cityofuelwein.org)

 [www.uelweinparks.org](http://www.uelweinparks.org)

