

**This is Task Order No. 2003-20A
consisting of 3 pages.**

Task Order

In accordance with paragraph 1.01 of the Master Agreement between Owner and Engineer for Professional Services dated September 15, 2008 ("Agreement"), Owner and Engineer agree as follows:

Specific Project Data

A. Title: Oelwein NE Sanitary Sewer Improvements

B. Description: Portions of the City of Oelwein's existing sanitary sewer collection system pipes are undersized based on the peak flow events. During peak wet weather events, City Staff have to pump out of manholes to protect homes from sanitary sewer backups. Staff has received several complaints from citizens stating that they have had basement backups. Staff desires a sanitary sewer study and recommendation of improvements in the following areas:

1. 1st Ave NE (2nd St NE to 4th St NE)
2. 2nd Ave NE (2nd St NE to 3rd St NE)
3. 2nd St NE (N Frederick to 2nd Ave NE)
4. 4th Ave NE & 5th Ave NE (3rd St NE to 6th St NE)

The improvement budget has yet to be determined. The preliminary design will help determine the scope of improvements along with estimated total projects. The preliminary design will also be utilized to apply for Community Development Block Grant (CDBG) funds. This Task Order is for preliminary design services only.

1. Services of Engineer - Basic Services of Engineer shall be as per Exhibit A except as modified below:

a. A1.01 (Study and Report Phase) – This scope of services is not included with this Task Order.

b. A1.02 (Preliminary Design Phase) – As per exhibit A, but with the following additions:

- (1) TOPOGRAPHIC SURVEY: The Engineer will prepare a topographic survey of the project areas. A legal boundary survey will not be performed. Survey area will be limited to existing right of way and will include manhole rims, manhole flowlines, manhole condition reports (photos/logs), street (surface features), and private utilities from map locations.
- (2) MODELING SANITARY SYSTEM: The Engineer will model the existing sanitary lines in the general four (4) study areas (Items 1-4 shown in the Description). Engineering will utilize the sanitary sewer model to replicate the backup condition to estimate the peak flowrate in the basin. Ideally staff would be able to provide an estimate of the high-water mark in certain manholes to better estimate the peak flow. Based on the model results, FOX will determine the costs associated to remove and replace the upsized sanitary sewer in place.
- (3) PRELIMINARY DESIGN: FOX will evaluate and propose design improvements in each of the four (4) study areas. Evaluation includes an alternative relief sewer route and its associated cost (4th Ave NE & 5th Ave NE Study Area). Evaluation of a permanent pump station with force main (assume at 5th & 5th). The Preliminary Design includes opinion of probable of construction cost for each design option. The Engineer will furnish a Preliminary Design Memo to the Owner. Memo includes the summary of the design options, opinion of costs, project schedule, and potential funding sources.
- (4) Meetings with Staff and City Council (assume 2 meetings).
- (5) The work does NOT include a meeting with property owners to discuss the project. If the City desires a property owner meeting, this would be provided as additional services.

c. A1.03 (Final Design Phase) – This scope of services is not included with this Task Order.

d. A1.04 (Bidding Phase) - This scope of services is not included with this Task Order.

e. A1.05 (Construction Phase) - This scope of services is not included with this Task Order.

f. Part 2 (Additional Services) - As per exhibit A except for services specifically identified in this document as part of other phases of work.

1. Funding Assistance - Funding Administration will be by others. The Engineer shall provide funding assistance as described in the Master Agreement under A2.01.A.1 and other services required to comply with funding requirements as requested by the Owner. All time and expenses associated with submittal, review and design modifications associated with project funding shall be included in this phase.
2. If requested by Owner, Engineer will prepare for and participate in other public meetings.

2. Owner's Responsibilities - As per Exhibit B, but with the following additional responsibilities:

1. The Owner shall be responsible for all property and easement acquisitions and right of entry for survey as per B.2.01.C.3, if required.
2. The Owner shall be responsible for obtaining the services of a geotechnical firm for completion of geotechnical investigations if recommended during the Preliminary Design.
3. The Owner shall pay for all permit fees associated with the project. Such fees are not included in this contract.

3. Times for Rendering Services - Engineer and Owner are aware that there are factors outside the Engineer's control that may affect the Engineer's schedule for completing the services to be provided under this Agreement. The Engineer shall perform these services with reasonable diligence and expediency consistent with sound professional services. The following schedule is estimated based on a December 21, 2020 signed Agreement:

<u>Phase</u>	<u>Completion Date</u>
Funding Assistance	As required
Preliminary Design Phase	May of 2021

4. Payments to Engineer - As per Exhibit C and as follows:

Phase	(Hourly/Lump Sum)*	Amount
Funding Assistance	Method B: Standard Hourly Rates	\$2,000 (estimated)
Topographic Survey	Method A: Lump Sum	\$8,500
Modeling Sanitary System	Method A: Lump Sum	\$7,500
Preliminary Design	Method A: Lump Sum	\$16,500

Notes:

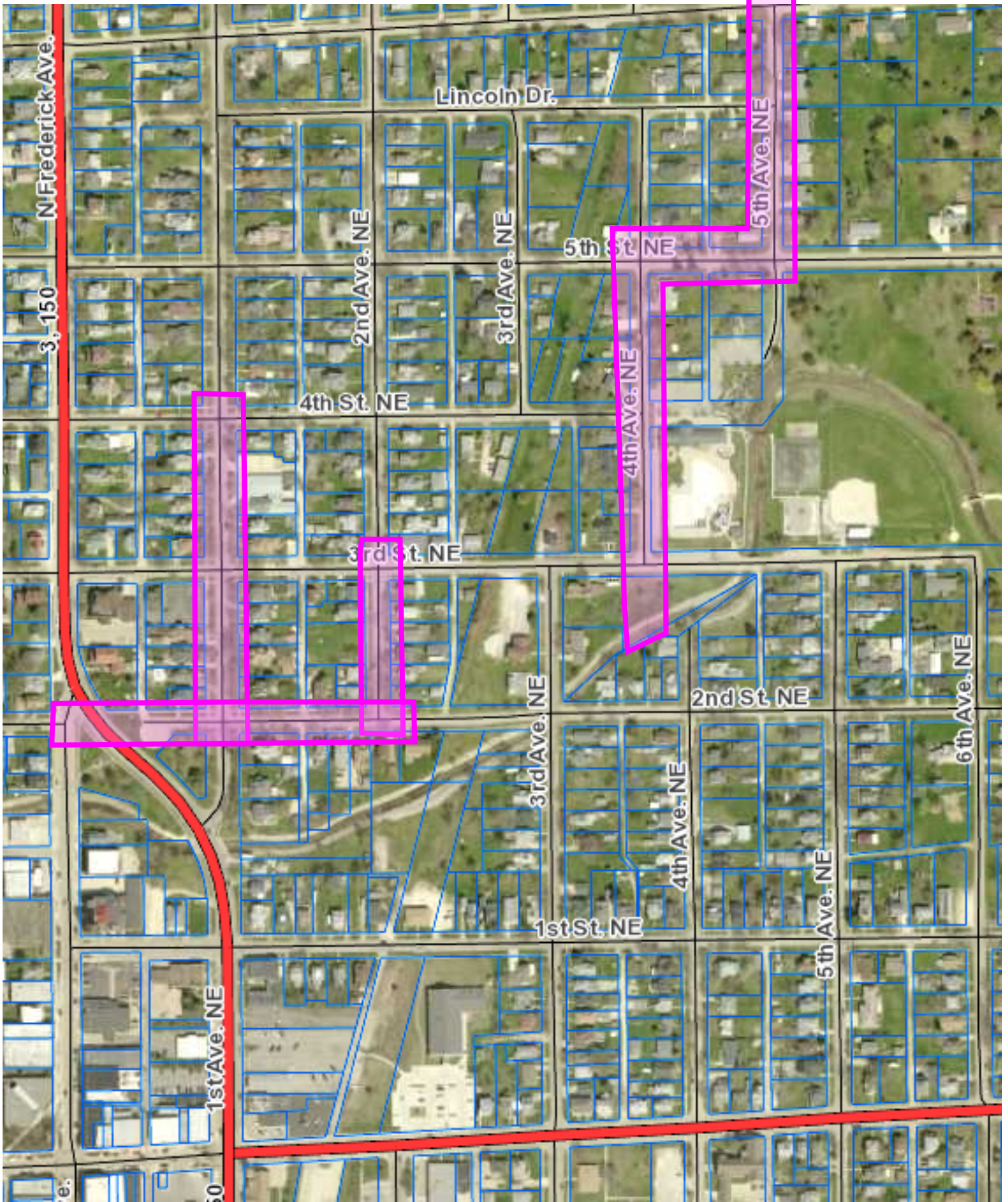
1. Method A Lump Sum fees noted above include appropriate amounts for direct expenses for each item.
2. Amounts listed above that are based on Standard Hourly Rates and Reimbursable Expenses are estimates only; actual fees and charges for those items may differ from the estimated amounts, but will not exceed the estimated amount without prior approval by the Owner.
3. The total of the lump sum fees is \$32,500
4. The total of the hourly estimated fees is \$2,000.
- 5. The total lump sum and hourly estimated fees is \$34,500.**

5. Engineer's Consultants - None

6. Other Modifications to Master Agreement - None

7. Attachments – Oelwein NE Sanitary Sewer Improvements - Figure

8. Documents Incorporated By Reference - None



Oelwein NE Sanitary Sewer Improvements