



PARKS MONTHLY UPDATE, DECEMBER 2021
PARKS / CEMETERY / AQUATICS / CAMPGROUND / TRAILS

Park and Recreation

www.oelwein.fun

This month in the park department, I have been busy with interviewing and lining up paperwork for the new park assistant, Nathan Weidemann. Chris and Willie came in and poured six more disc golf pads this past Friday as we are wrapping up concrete pouring. Kevin Stickle is working on installing the shelter at the aquatic center for pool patrons to use for facility rentals. Maintenance is ongoing with some of the bigger equipment so I can get it out of the shop and into storage. I went through the viaduct with the leaf blower and cleaned both sidewalks out this week as well. I have been getting the snow removal equipment ready to go, as the snow will be coming soon. I came in Saturday morning and picked up the downtown from the old time Christmas event. Later Saturday morning I met with the tree board downtown as they helped with their annual tree pruning of the downtown streetscape trees. I had Chris and Willie push in all the new posts at the cemetery so Jake Blitsch and volunteers can start installing block signs.

This month in the park department, Chris, Willie and I finished pouring the last four disc golf pads at City Park. I went around Wednesday and brought down all the flags in the parks and cemeteries with the high windstorm coming in that evening. The parks had little damage with the storm damage as just some smaller limbs broken off trees. Maintenance on the equipment is ongoing, I was able to get out to the cemetery and bring all the equipment back to the park shop. We took advantage of the warm weather on Wednesday and power sprayed the remaining equipment. The memorial bench for the Reeves family was picked up this month and will be installed at the sports complex. On Saturday, Chris and I came in and cleared sidewalks with the snow that we received Friday night.



PARKS MONTHLY UPDATE, DECEMBER 2021
PARKS / CEMETERY / AQUATICS / CAMPGROUND / TRAILS

Park and Recreation www.oelwein.fun

DISC GOLF PADS



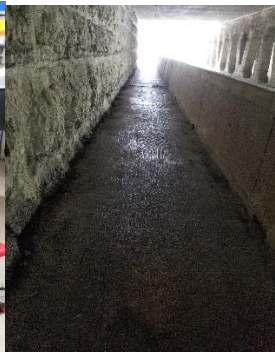
AQUATICS SHELTER



MAINTENANCE



VIADUCT



SNOW PREP





PARKS MONTHLY UPDATE, DECEMBER 2021
PARKS / CEMETERY / AQUATICS / CAMPGROUND / TRAILS

Park and Recreation

www.oelwein.fun

DOWNTOWN TREE TRIMMING



NEW BLOCK SIGNS



SNOW REMOVAL





PARKS MONTHLY UPDATE, DECEMBER 2021
PARKS / CEMETERY / AQUATICS / CAMPGROUND / TRAILS

Park and Recreation

www.oelwein.fun

DISC GOLF PADS

AQUATICS SHELTER



FLAG REMOVAL



MINOR STORM DAMAGE



MAINTENANCE



MEMORIAL BENCH





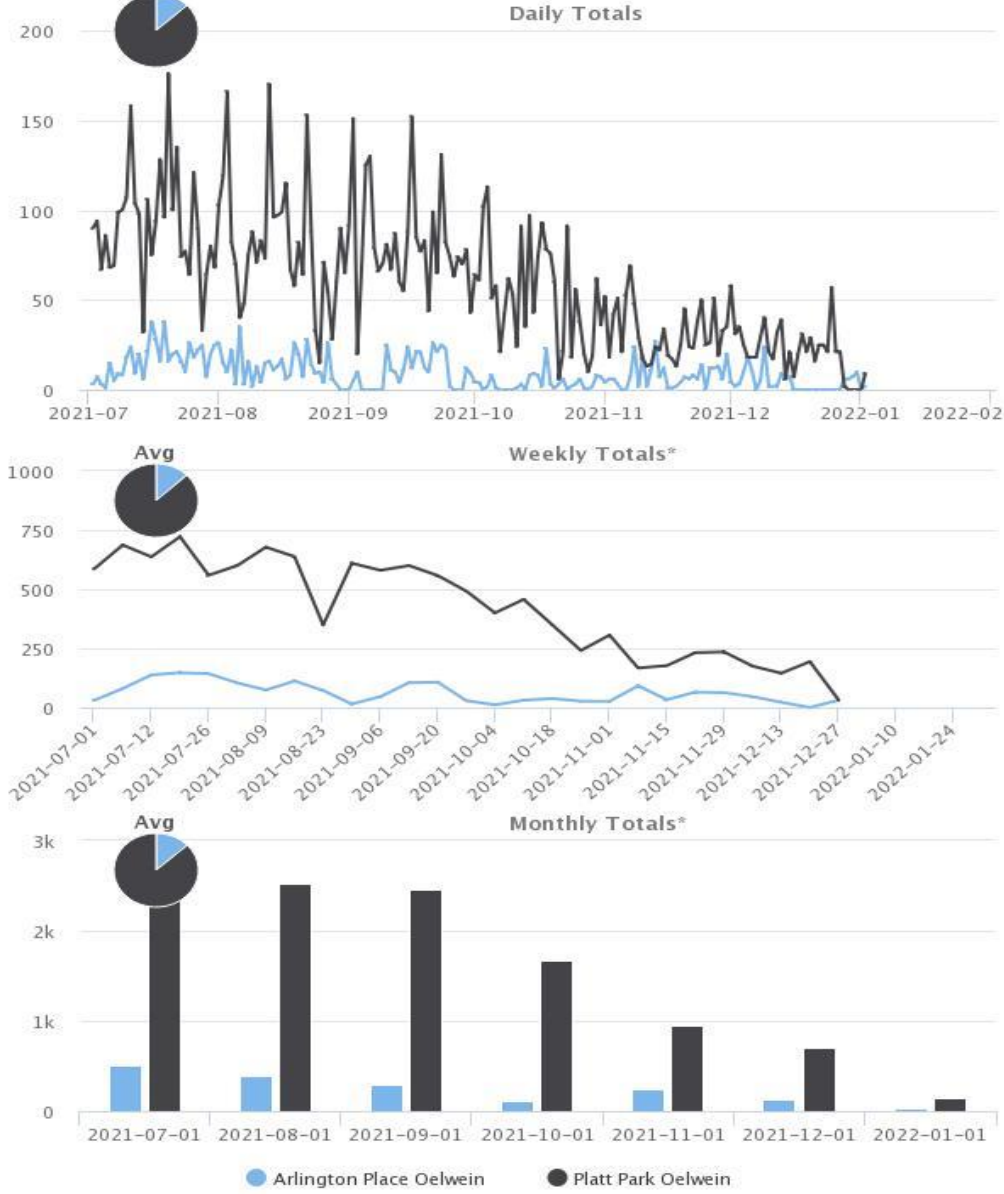
PARKS MONTHLY UPDATE, DECEMBER 2021
 PARKS / CEMETERY / AQUATICS / CAMPGROUND / TRAILS

Park and Recreation

www.oelwein.fun

Daily/Weekly/Monthly totals

2021-07-01 to 2022-01-31 (215 days)



SITE

Arlington Place Oelwein
 Platt Park Oelwein

2021 TRAIL TOTALS

	JULY	AUG	SEPT.	OCT	NOV.	DEC.	ADT
Arlington Place Oelwein	512	388	294	115	242	134	9.11
Platt Park Oelwein	2845	2523	2458	1676	950	704	60.45

TOTAL TRAIL USERS 12,841



PARKS MONTHLY UPDATE, DECEMBER 2021
PARKS / CEMETERY / AQUATICS / CAMPGROUND / TRAILS

Park and Recreation

www.oelwein.fun

Daily Activities

www.oelwein.fun

- ❖ Sanitizing shop and equipment
- ❖ Pick up garbage downtown
- ❖ Checking/maintaining parks, cemeteries
- ❖ Maintenance on equipment
- ❖ Order supplies for all departments
- ❖ Safety meetings
- ❖ Meet with contractors
- ❖ Retrieve & upload trail count data
- ❖ Snow Removal

Progress on Projects

www.oelwein.fun

- ❖ Website work ongoing
- ❖ Trail easements/grants
- ❖ Work on Park and Rec master plan
- ❖ Finished pool winterization
- ❖ Pool shelter progress
- ❖ Equipment maintenance
- ❖ CEU classes
- ❖ Block signs at Woodlawn completed
- ❖ Disc golf course pads installed

Next Month and Future Projects

www.oelwein.fun

- ❖ Diamond 3 in-field fencing
- ❖ Website work
- ❖ Remove old well houses at City Park
- ❖ Drinking fountain install Platt Park
- ❖ Arching sign for entrance at Woodlawn
- ❖ Replace decking on old bridge
- ❖ Grant writing
- ❖ Motor/Pump replacement at pool
- ❖ Install basketball anchors
- ❖ Install new slide sign at pool
- ❖ Move fence line at pool
- ❖ Trail development
- ❖ Disc golf signage, backfilling
- ❖ Equipment maintenance
- ❖ Paint bathroom doors
- ❖ Redgate parking area
- ❖ Ash tree removal
- ❖ Sealcoating roads in Spring
- ❖ Prairie planting

JOSHUA JOHNSON MA
OELWEIN PARK SUPERINTENDENT

