

7/18/2023

Attn: Honorable Mayor and Council Members

During the spring of 2023 my assistant and I identified deteriorating roads that we felt needed sealcoat maintenance. Attached are maps of said roads along with two bids from local contractors.

Blacktop services submitted a bid of \$2.50 a square yard with a total cost of \$51,320.

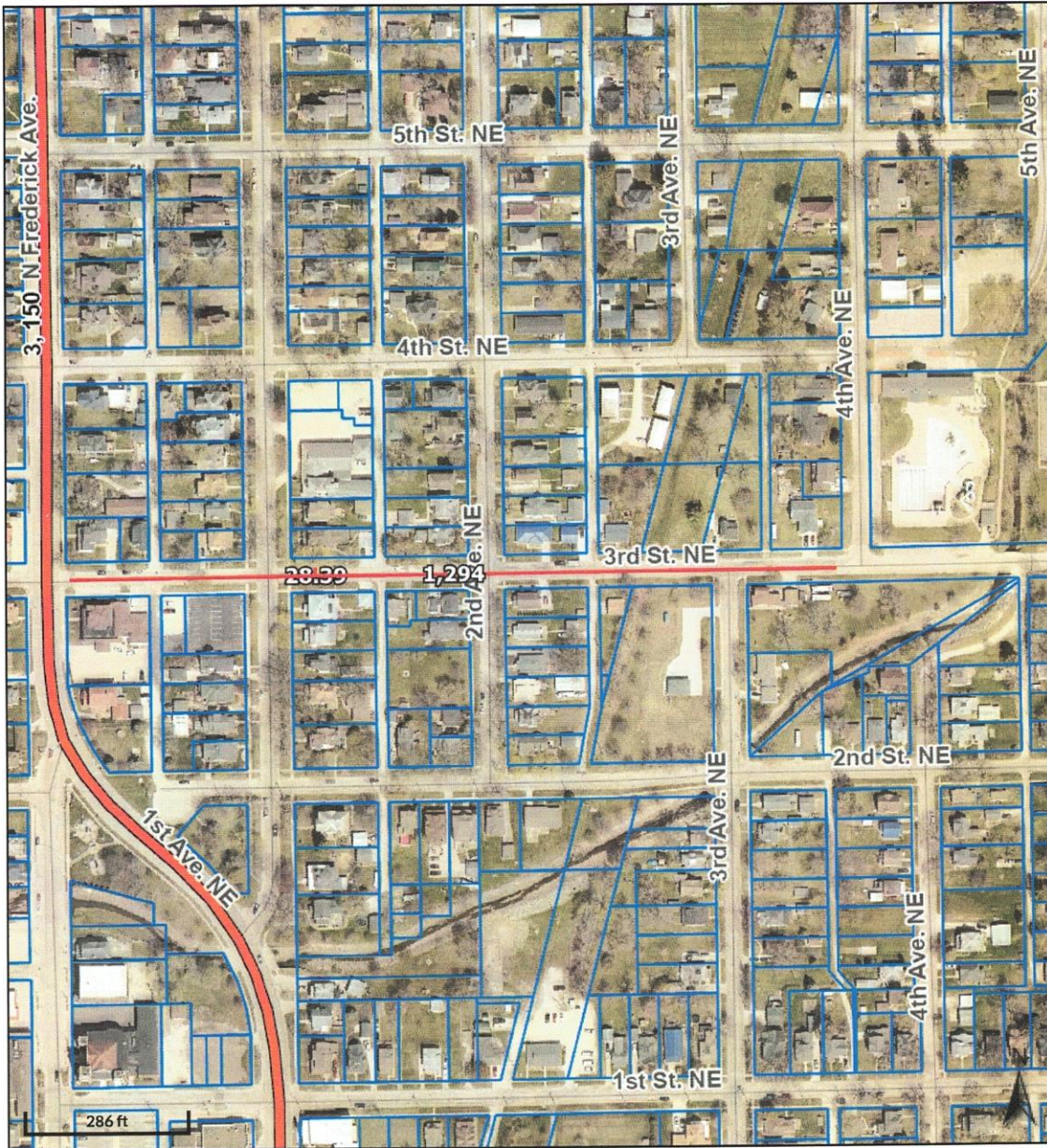
Prairie Road Builders submitted a bid of \$2.38 a square yard with a total cost of \$49,240.44.

Based on the bids received I am recommending that we award the 2023 sealcoating project to Prairie Road Builders.

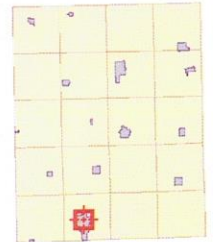
Thank you for your time and consideration.

A handwritten signature in black ink that reads "Herb Doudney". The signature is written in a cursive style with a long, sweeping underline.

From the Desk of  
Public Works Director Herb Doudney



Overview



Legend

-  Corporate Limits
-  Parcels
- Major Highways**
  -  County Highway
  -  Federal Highway
  -  State Highway
  -  Roads

**Disclaimer:** Fayette County, the Fayette County Assessor and their employees make every effort to produce and publish the most current and accurate information possible. The maps included in this website do not represent a survey and are compiled from official records, including plats, surveys, recorded deeds, and contracts, and only contain information required for government purposes. See the recorded documents for more detailed legal information. Data is provided in "as is" condition. No warranties, expressed or implied, are provided for the data herein, its use or its interpretation. Fayette County and its employees assume no responsibility for the consequences of inappropriate uses or interpretations of the data. Any person that relies on any information obtained from this site does so at his or her own risk. All critical information should be independently verified. If you have questions about this site please contact the Assessor's Office at (563) 422-3397.

Date created: 6/12/2023  
 Last Data Uploaded: 6/12/2023 3:31:34 AM

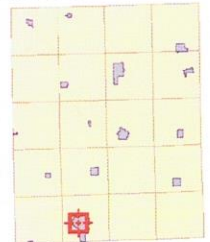
Developed by  **Schneider**  
 GEOSPATIAL

$$28 \times 1300 = 36,400 \text{ ft}^2$$

$$4044 \text{ yd}^2$$



Overview



Legend

-  Corporate Limits
-  Parcels
- Major Highways**
  -  County Highway
  -  Federal Highway
  -  State Highway
  -  Roads

**Disclaimer:** Fayette County, the Fayette County Assessor and their employees make every effort to produce and publish the most current and accurate information possible. The maps included in this website do not represent a survey and are compiled from official records, including plats, surveys, recorded deeds, and contracts, and only contain information required for government purposes. See the recorded documents for more detailed legal information. Data is provided in "as is" condition. No warranties, expressed or implied, are provided for the data herein, its use or its interpretation. Fayette County and its employees assume no responsibility for the consequences of inappropriate uses or interpretations of the data. Any person that relies on any information obtained from this site does so at his or her own risk. All critical information should be independently verified. If you have questions about this site please contact the Assessor's Office at (563) 422-3397.

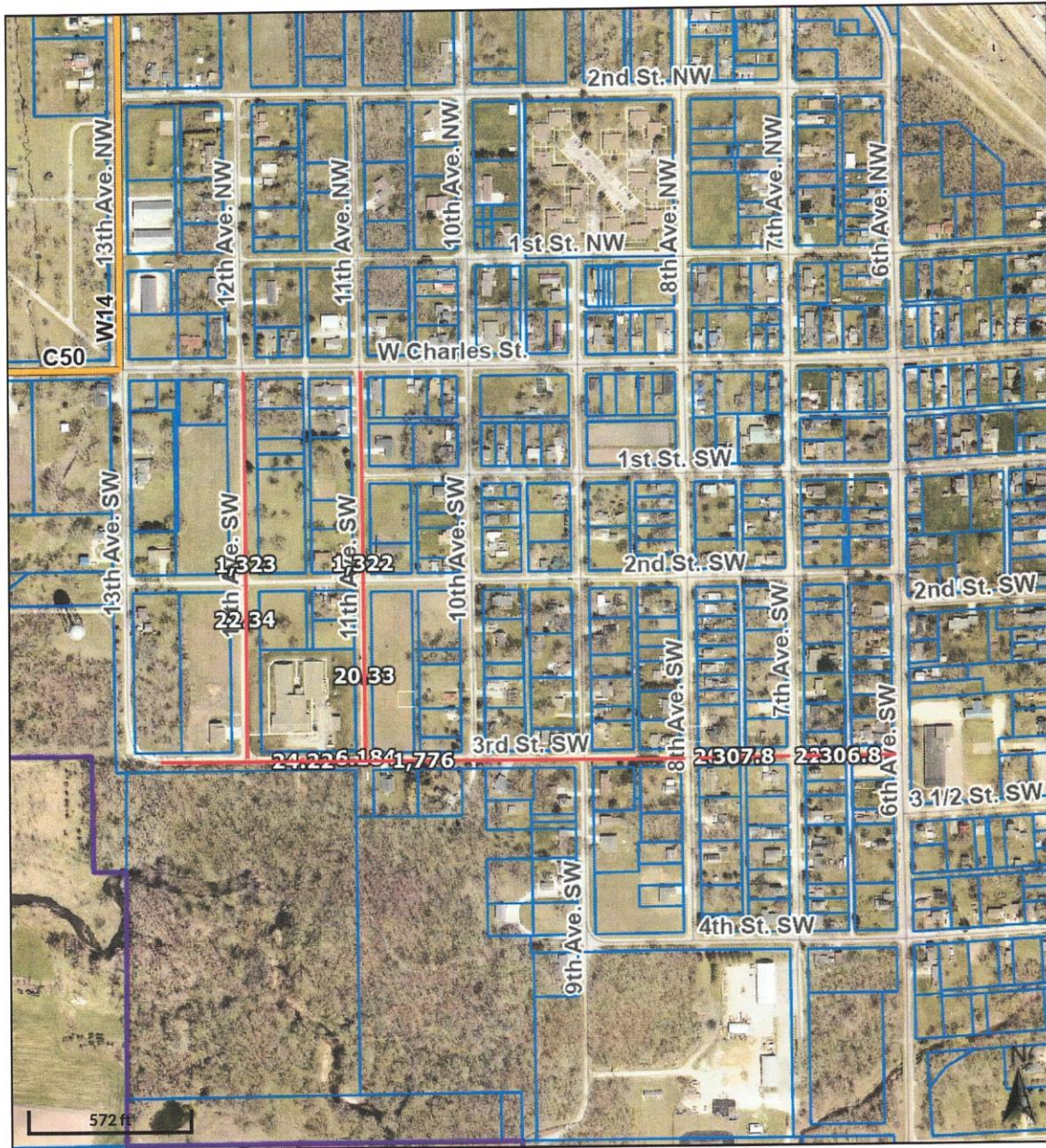
Date created: 6/12/2023  
 Last Data Uploaded: 6/12/2023 3:31:34 AM

Developed by  **Schneider**  
 GEOSPATIAL

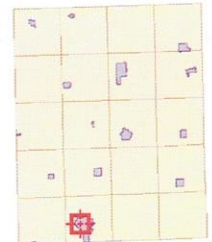
$$22 \times 1440 = 31,680 \text{ ft}^2$$

$$3520 \text{ yd}^2$$

12,964 yds<sup>2</sup> Total



Overview



Legend

- Corporate Limits
- Parcels
- Major Highways**
- County Highway
- Federal Highway
- State Highway
- Roads

**Disclaimer:** Fayette County, the Fayette County Assessor and their employees make every effort to produce and publish the most current and accurate information possible. The maps included in this website do not represent a survey and are compiled from official records, including plats, surveys, recorded deeds, and contracts, and only contain information required for government purposes. See the recorded documents for more detailed legal information. Data is provided in "as is" condition. No warranties, expressed or implied, are provided for the data herein, its use or its interpretation. Fayette County and its employees assume no responsibility for the consequences of inappropriate uses or interpretations of the data. Any person that relies on any information obtained from this site does so at his or her own risk. All critical information should be independently verified. If you have questions about this site please contact the Assessor's Office at (563) 422-3397.

Date created: 6/8/2023  
Last Data Uploaded: 6/8/2023 3:28:18 AM

Developed by Schneider  
GEOSPATIAL

12th Ave From 3rd to Charles  
 $22 \times 1350 = 29,700 \text{ ft}^2 = 3300 \text{ yds}^2$

11th Ave From 3rd to Charles  
 $22 \times 1350 = 29,700 \text{ ft}^2 = 3300 \text{ yds}^2$

3rd St From 13th to 6th Ave  
 $24 \times 1800 = 43,200 \text{ ft}^2 = 4800 \text{ yds}^2$   
 $22 \times 300 = 6,600 \text{ ft}^2 = 782 \text{ yds}^2$   
 $22 \times 320 = 7,040 \text{ ft}^2 = 782 \text{ yds}^2$