



Metro Counties Government Center
2099 University Avenue West
Saint Paul, MN 55104-3431

(651) 645-9149 ~ www.mmcd.org

November 15th, 2023

New Prague City Administrator
Joshua Tetzlaff
118 Central Avenue South
New Prague, MN 56071

Dear Joshua,

Enclosed is a summary of work completed by the Metropolitan Mosquito Control District (MMCD) in the New Prague area during the 2023 mosquito control season.

For the third consecutive year the Twin Cities area experienced drought conditions throughout most of the summer which contributed to lower levels of annoyance mosquitoes. Near record snowfall during the winter of 2022-23 brought standing water in the spring, which ushered in a surge of mosquitoes exceeding the 10-year average in late May and early June. Lack of rainfall in the subsequent months led to a decrease in the mosquito population and it remained low through the rest of the summer. (See back for numbers from 2023.)

West Nile virus was active in the District and elsewhere in Minnesota in 2023. Testing of mosquitoes this year for WNV returned the highest rate of infection in the history of the District's WNV surveillance. One hundred twenty-nine of 818 mosquito samples tested were positive for WNV. While most human illnesses have been reported, some are still being evaluated. As of November 14, 20 WNV illnesses had been confirmed in Minnesota with nine of those cases in residents of the District (Anoka Co. 1, Dakota Co. 1, Hennepin Co. 5, Washington Co. 1). As of November 14, illnesses caused by two other mosquito-borne viruses had been reported in Minnesota. Two Jamestown Canyon illnesses were confirmed in residents of Anoka County and Ramsey County. One case of La Crosse encephalitis was confirmed in a resident of Scott County. For more information about vector-borne disease in 2023 look for the MMCD Technical Advisory Board report coming in the spring of 2023.

MMCD employees controlled immature black flies (biting gnats) in small streams and large rivers throughout the metropolitan area. In 2023, 121 black fly larvicide treatments were made to the rivers and streams in the District. Spring flooding caused a slight delay in sampling efforts. After the extremely high-water levels in May, the continuing drought in the area caused rivers to go well below average through September resulting in few treatments after June. Adult black flies remained at tolerable levels for most of season with the number of black fly annoyance calls in 2023 (46), higher than 2022 (11) but less than 2021 (151).

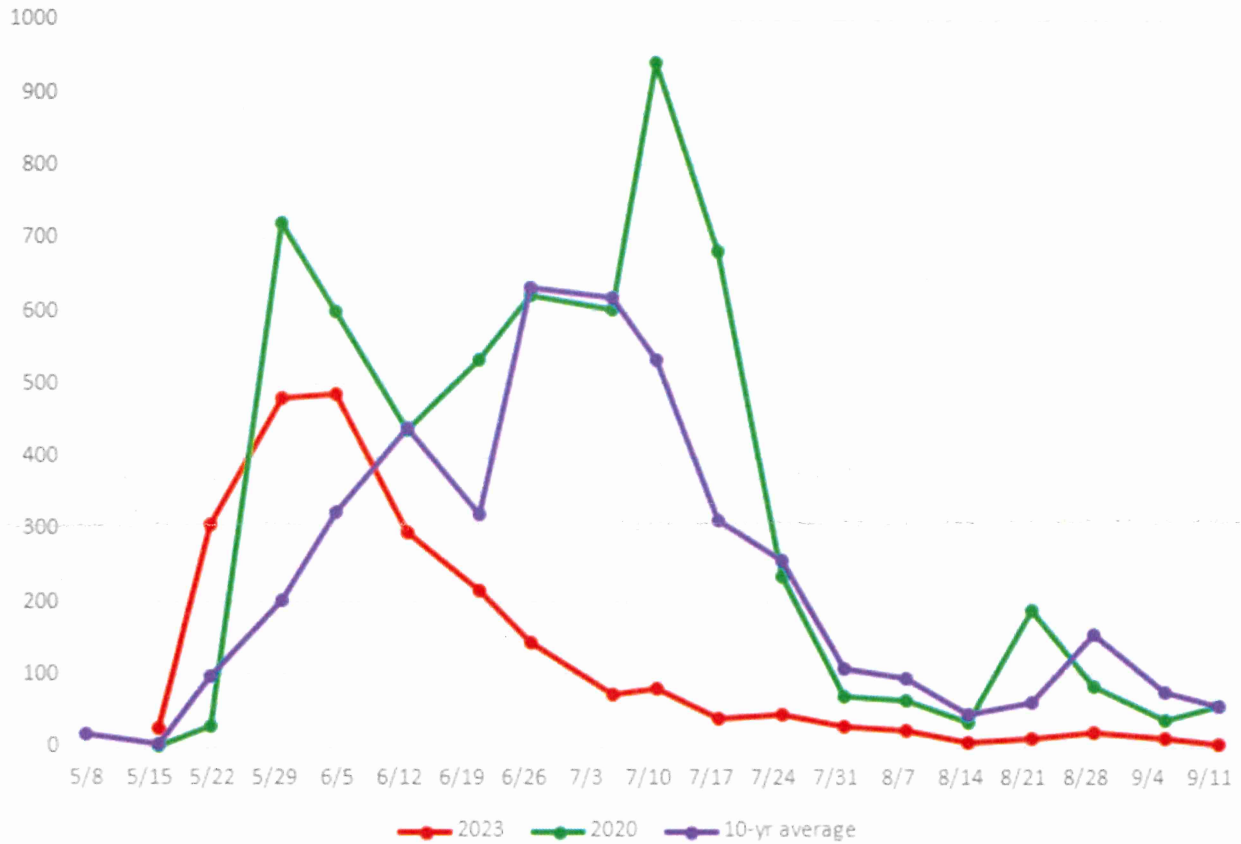
District staff have been present at schools and community events throughout the year to provide information on mosquito biology and habitat, disease concerns, and preventative measures. If you would like MMCD to speak to your group or attend an event, please let us know!

If you have any questions or would like to meet to discuss our agency's activities, please contact me.

Sincerely,

Alex Carlson, Public Affairs Manager
Phone: (651) 643-8342 // Email: acarlson@mmcd.org

Weekly Averages of Human-biting Mosquitoes in CO2 Traps, 2023



Graph created by Dr. Scott Larson, MMCD Assistant Entomologist

District-Wide Numbers from 2023:

57,526 Larval mosquito inspections	171,894.75 Acres of larval mosquito treatments	10,921 Tires recycled
316,899 Catch basin treatments	1,959.02 Acres of adult mosquito treatments	3,098 Customer calls

City and Community Presentations Available

MMCD staff are available to provide an update on mosquito activity, give city specific information, or share resources about mosquito, tick, and black fly reduction measures to cities. Presentations or live questions and answers are great for **City Council Meetings, Township Board Meetings, Sustainability Commissions**, or events for residents. If you would like to schedule a presentation, please contact Alex Carlson:

Alex Carlson, Public Affairs Manager

acarlson@mmcd.org

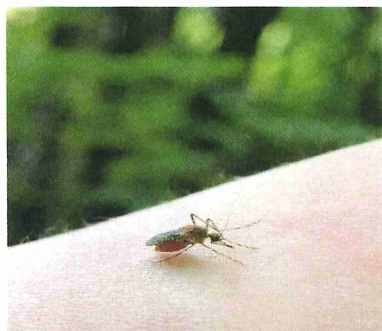
Direct: (651) 643-8342

2023 Activity Summary for New Prague and Helena

LARVAL CONTROL

Most of the control done by MMCD targets mosquitoes during their larval stage. Mosquito larvae usually develop in standing water and are most common after a rainfall. Larval control materials are applied via helicopter, backpack, drone, or by hand.

Larval Control in New Prague and Helena in 2023:
Sites Inspected: 111 | Acres Treated: 1290.70



ADULT CONTROL

MMCD supplements our larval control program with limited adult mosquito control. Adult control materials are applied via backpack during the day or truck-mounted cold fogger in the evening.

Adult Mosquito Control in New Prague and Helena in 2023:
Sites Inspected: 51 | Acres Treated: 7.39

DISEASE PREVENTION

Controlling the mosquito species that are most likely to spread disease is a top priority for MMCD. Removing containers that could hold stagnant water is critical to reducing the spread.

Disease Prevention Activity in New Prague and Helena:
Tires Removed: 616 | Catch Basins Treated: 283
Disease Prevention Property Inspections: 15



CUSTOMER CALLS

We encourage residents of the district to call MMCD to report mosquito annoyance, employee or helicopter concerns, request waste tire removal, or for anything else.

Customer Calls from New Prague and Helena in 2023: 13

For questions about your city's data,
please contact Alex Carlson –
acarlson@mmcd.org

