

**1201 1ST STREET NE
NEW PRAGUE, MN 56071**

INSPECTION/CONDITION NOTES – MAY 7, 2026



SIGN

- Incandescent bulb sign for time and temperature
- Not turned on. Not sure if it is working.



ROOF

- UNIQUE STANDING SEAM COPPER ROOF SYSTEM



ROOF

- Two small area of flat roof on the building



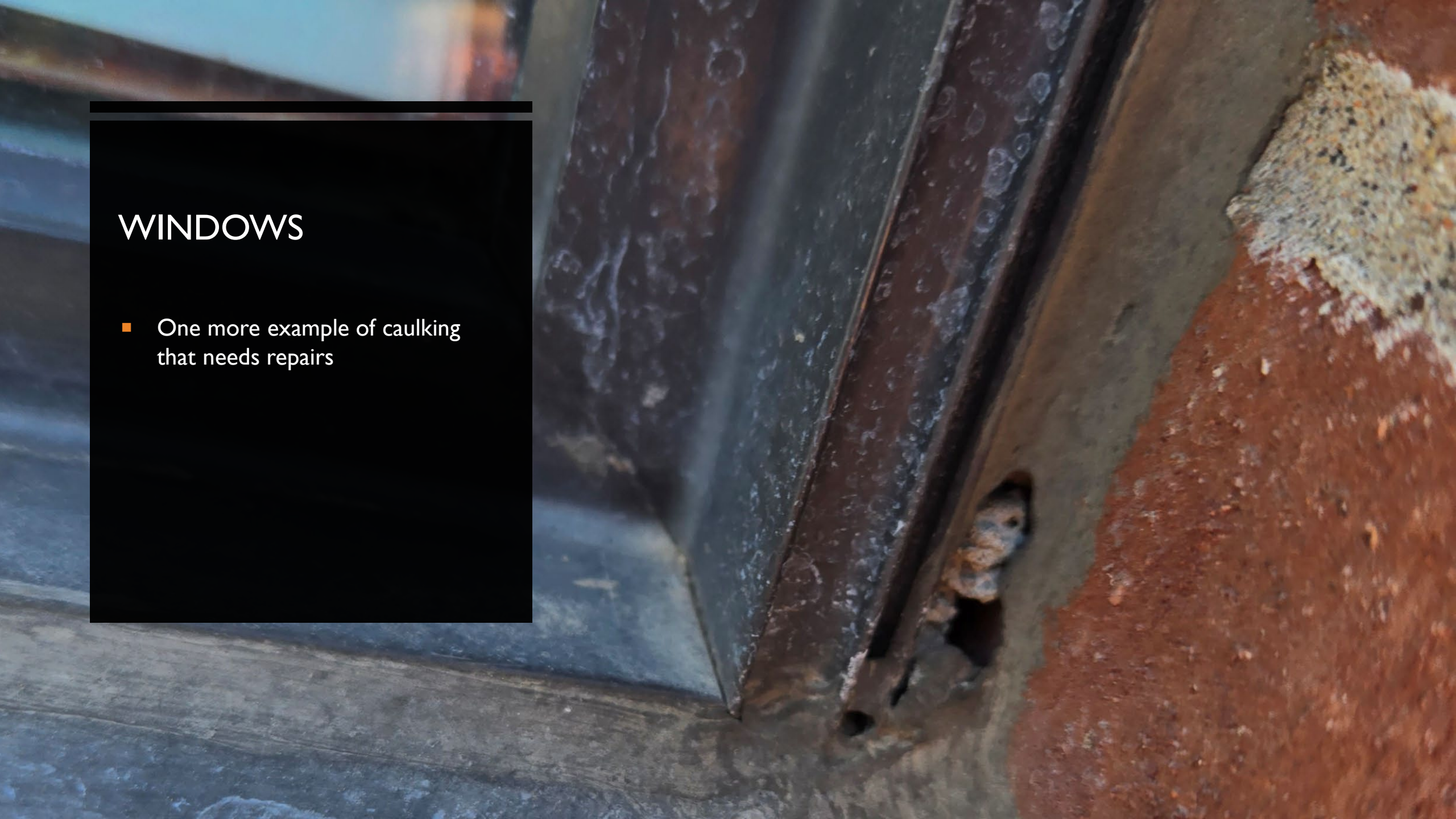
A close-up photograph of a window frame set into a red brick wall. The window frame is dark grey or black. The mortar between the bricks is light-colored. A black rectangular overlay is positioned at the bottom of the image, containing white text. The text includes the word 'WINDOWS' in all caps and a bullet point followed by a sentence about caulking repairs.

WINDOWS

- Caulking around the windows is drying and need some minor repairs

WINDOWS

- One more example of caulking that needs repairs



WALL FLASHING

- Flashing over Door 7 may need minor repairs.

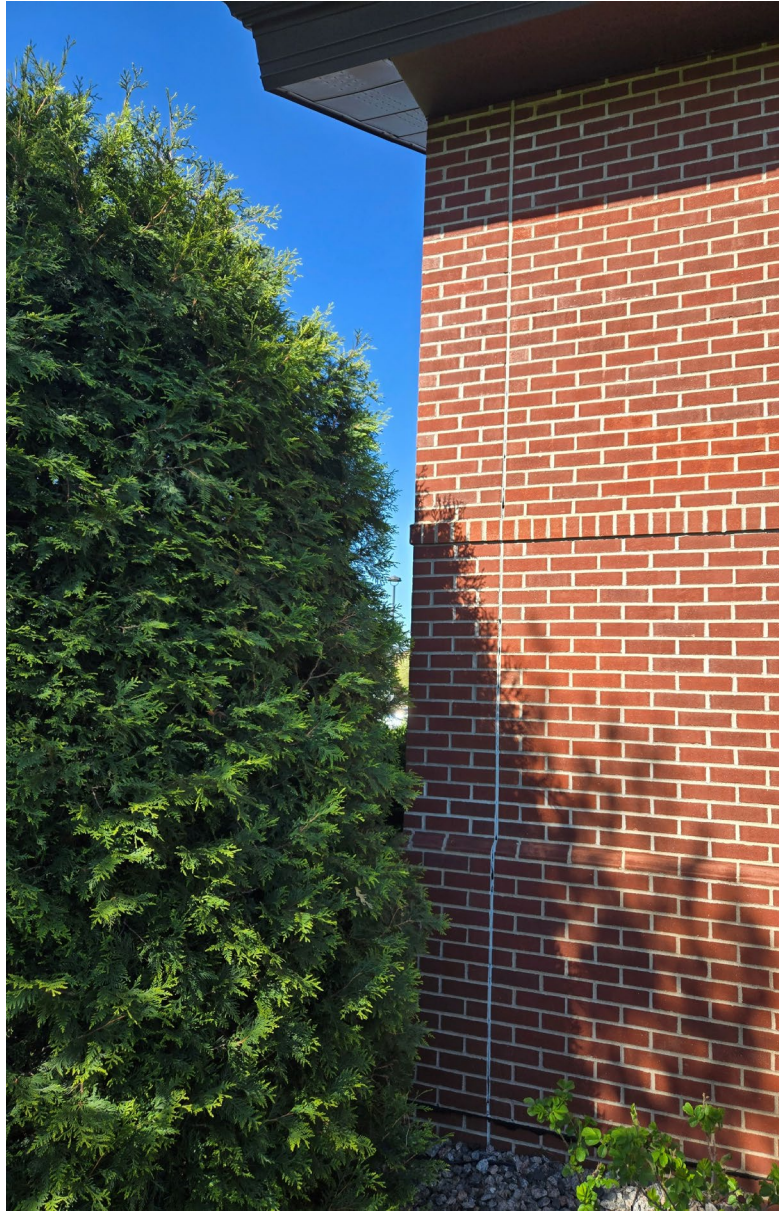


EXPANSION JOINTS

- Expansion joint caulking on the exterior of the facility need to be touched up.



MORE EXPANSION JOINT EXAMPLES



WATER HEATER INSTALLED 2019

CAUTION!
ELECTRIC SHOCK!
Do not store or use gasoline or other flammable vapors and liquids in the vicinity of this or any other appliance.

WARNING!
FOR YOUR SAFETY!
Do not store or use gasoline or other flammable vapors and liquids in the vicinity of this or any other appliance.

MODEL #: WER052C2X045N
REV / REL #: 00001 / 00009
ORDER #: 00000C000093686

Date: 11/29/2018 Time: 5:56 PM

INSPECTED BY
MB

FOR REPAIR PARTS
SCAN THE QR CODE.

OR GO TO:
[HTTP://SHOPHP.COM/ECOMMERCE/CATALOGHOTSP.OT.ASF?X7HSP=305](http://SHOPHP.COM/ECOMMERCE/CATALOGHOTSP.OT.ASF?X7HSP=305)
PL0011

Government Federal Law prohibits removal of this label before consumer purchase

ENERGYGUIDE

Westinghouse
Model WER052C2X045N

Water Heater - Electric
Tank Size (Storage Capacity): 48 gallons

Estimated Yearly Energy Cost
\$419

Cost Range of Similar Models
\$120 to \$423

First Hour Rating
Water you get in the first hour of use

medium
2 Gallons

high

SPARE
SPRINKLER
HEADS AND
WRENCH TO
REPLACE



OLYMPIC FIRE PROTECTION CORP. (507) 455-1150

DRAIN TEST: Before 10/01 Residual 80 Static 85

ALARMS: Flow: Local OK Supervisory NA

Tampers: Local OK Supervisory NA

Others Local alarm only

Hose Racks _____

Standpipes _____

Fire Pumps _____

Date 7-22-03

Inspector Meg Evans

Remarks: Tamper rings outside alarm
call Dispatcher 1st 758-4455

SPRINKLER SYSTEM INSTALL 2003

**WATER
SOFTENER NOT
PLUGGED AND
BYPASSED WITH
VALVES**



BRINE TANK



SOFTNER BYPASS VALVES CLOSED



HVAC EQUIPMENT



HVAC EQUIPMENT

HEAT EXCHANGER FAN
AND MOTOR MISSING A
BELT



HVAC EQUIPMENT

UNINVITED GUEST IN THE
HEAT EXCHANGER



HVAC EQUIPMENT

COIL IN THE HEAT EXCHANGER





HVAC EQUIPMENT

FAN AND MOTOR ON THE
OPPOSITE SIDE OF THE HEAT
EXCHANGER

HVAC EQUIPMENT

- Heat Exchanger Cabinet





HVAC EQUIPMENT

GEOHERMAL SUPPLY AND RETURN LINES HAVE SOME RUST



HVAC EQUIPMENT

THE LABELS ON THE PIPES
THAT ARE SHOWING RUST



REPAIRS DONE UNDER KITCHEN
AT SOME POINT



GEOHERMAL MOTORS AND PUMPS

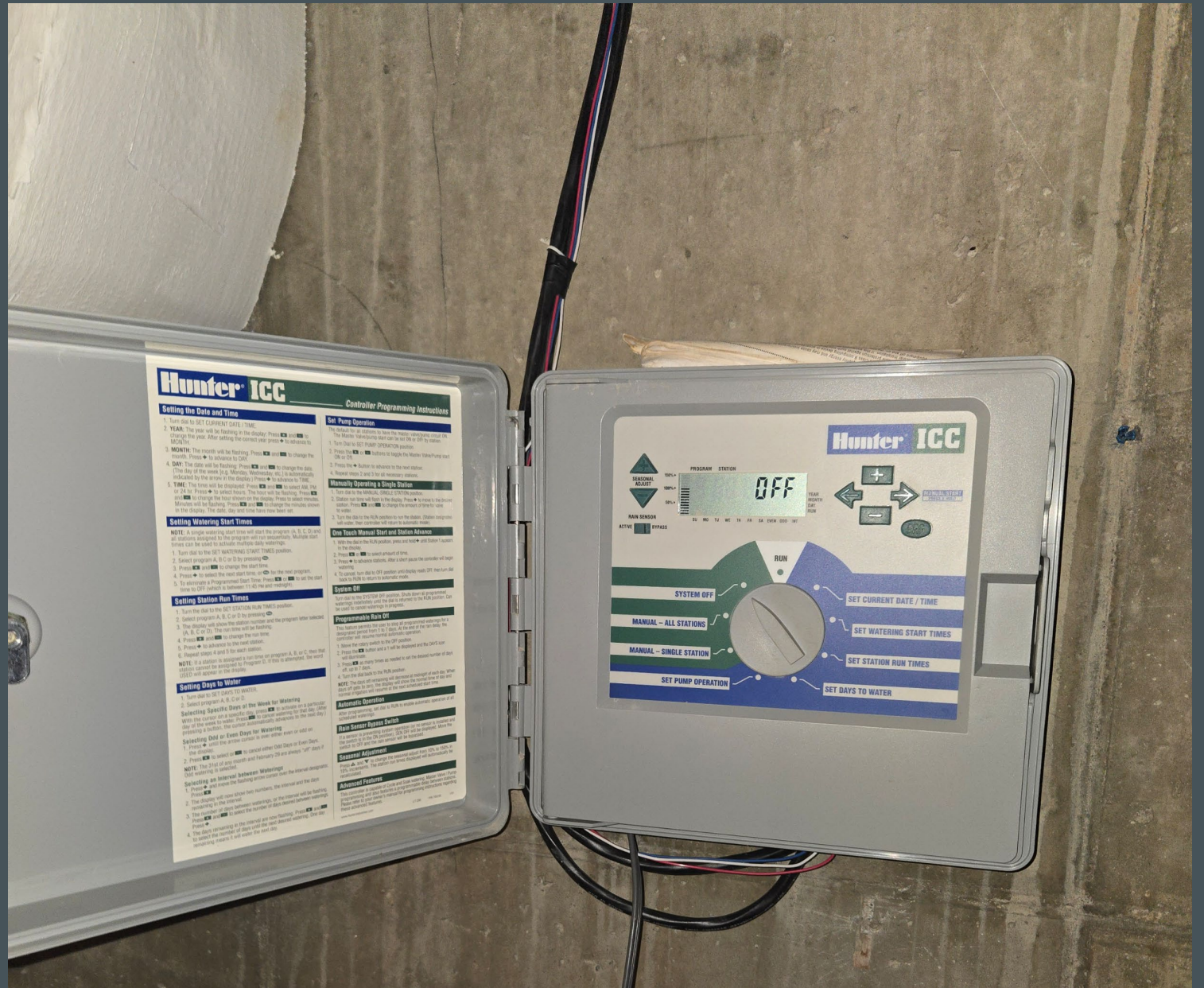
SUMP PUMP REPLACED IN 2023



HIGH WATER MONITOR SYSTEM FOR SUMP PUMP



LAWN IRRIGATION SYSTEM TURNED OFF



FIRE EXTINGUISHER IN BASEMENT, MOST ARE SIMILARLY CERTIFIED



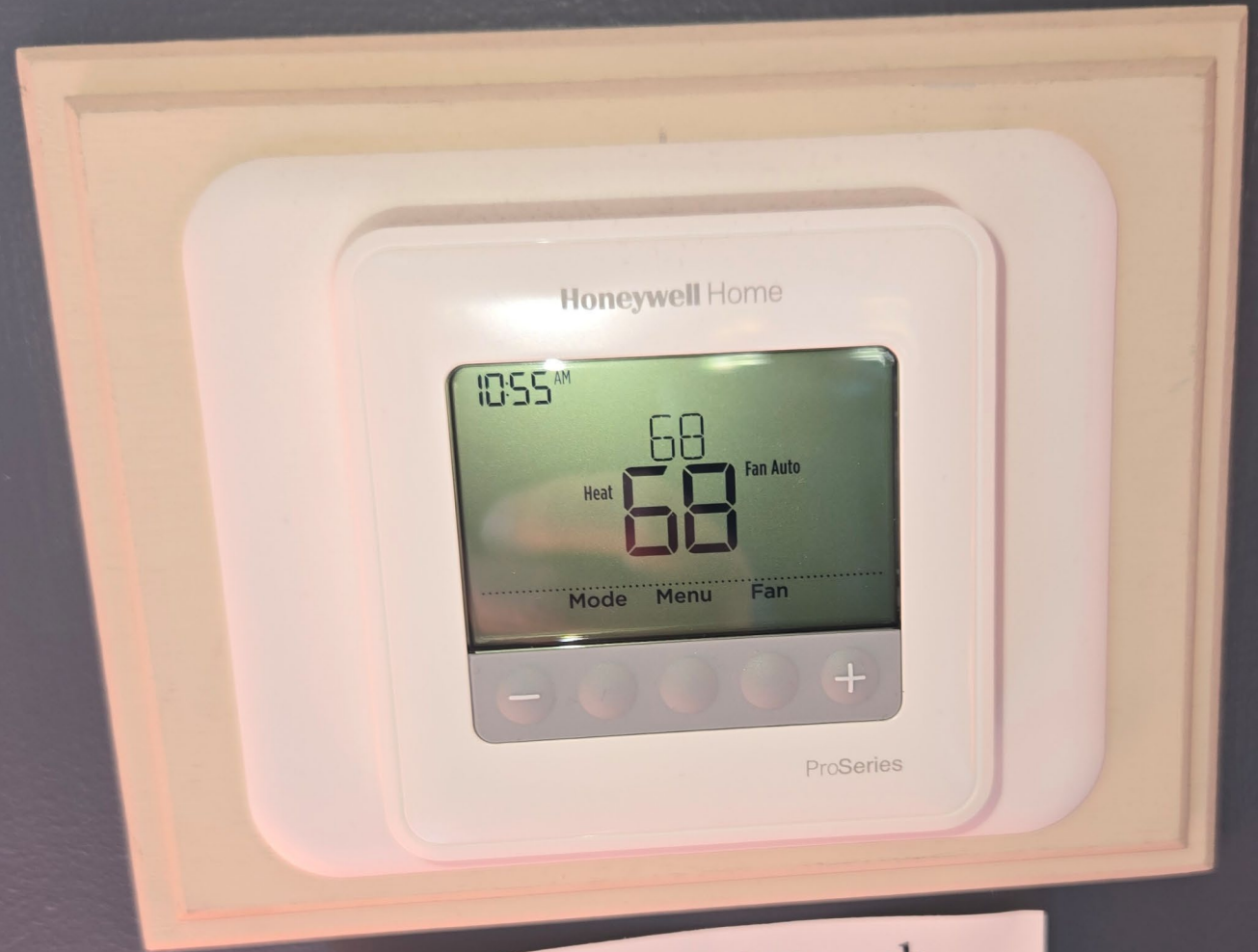
TWO NEW SPARE
EXTERIOR LIGHT
POSTS IN BASEMENT



ROOF DECKING
AND WHERE
DEMOED
BATHROOMS
WERE
PREVIOUSLY
VENTED

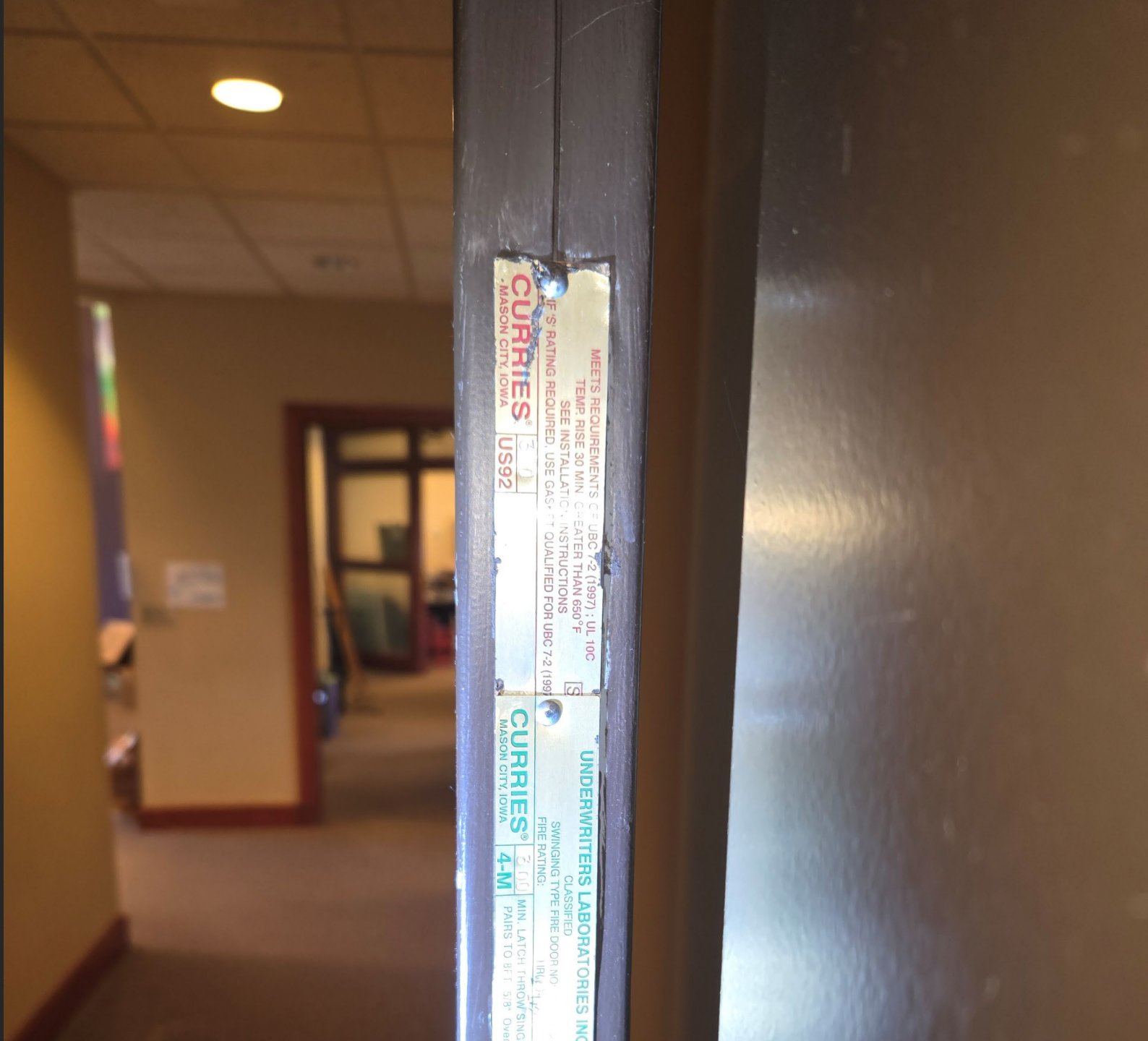


THERMOSTAT IN THE OCTAGON



Please don't touch
thermostat.

RATED DOOR IN FIRE WALL



MEETS REQUIREMENTS OF UBC 7-2 (1997); UL 100
TEMP. RISE 30 MIN. EXCEEDS 650°F
SEE INSTALLATION INSTRUCTIONS
IF S. RATING REQUIRED, USE GAS-FIT QUALIFIED FOR UBC 7-2 (1997)

CURRIES
MASON CITY, IOWA

2 0
US92

UNDERWRITERS LABORATORIES INC.
CLASSIFIED
SWINGING TYPE FIRE DOOR NO. 1184
FIRE RATING: 4-M
MIN. LATCH THROW SING. PAIRS TO R.F.T. 5/8" Over

CURRIES
MASON CITY, IOWA



KITCHEN