



# Small Area Plan Summary Diagrams

## **City Center Block**

*New Prague, Minnesota | July 15, 2024*

## Site Features: City Block



Multi-family residential

Playground

Community room

Multi-use plaza (farmers mkt, food trucks, parking, etc.)

Outdoor performance stage

Stormwater treatment (area TBD)

"Skinny" street w/planted median & parking

Entry plaza

Overflow parking (if needed)

Commercial infill building (per market demand)

# Buildings

Multi-family  
residential

Community room  
(approx. 13,000 sf)

Outdoor stage

Regulation hockey  
rink (85' x 200')

Commercial/retail infill  
(approx. 6400 sf)





# Blue & Green Layer



Stormwater treatment

Approx. area needed to treat on-site improvements

Optional stormwater overflow

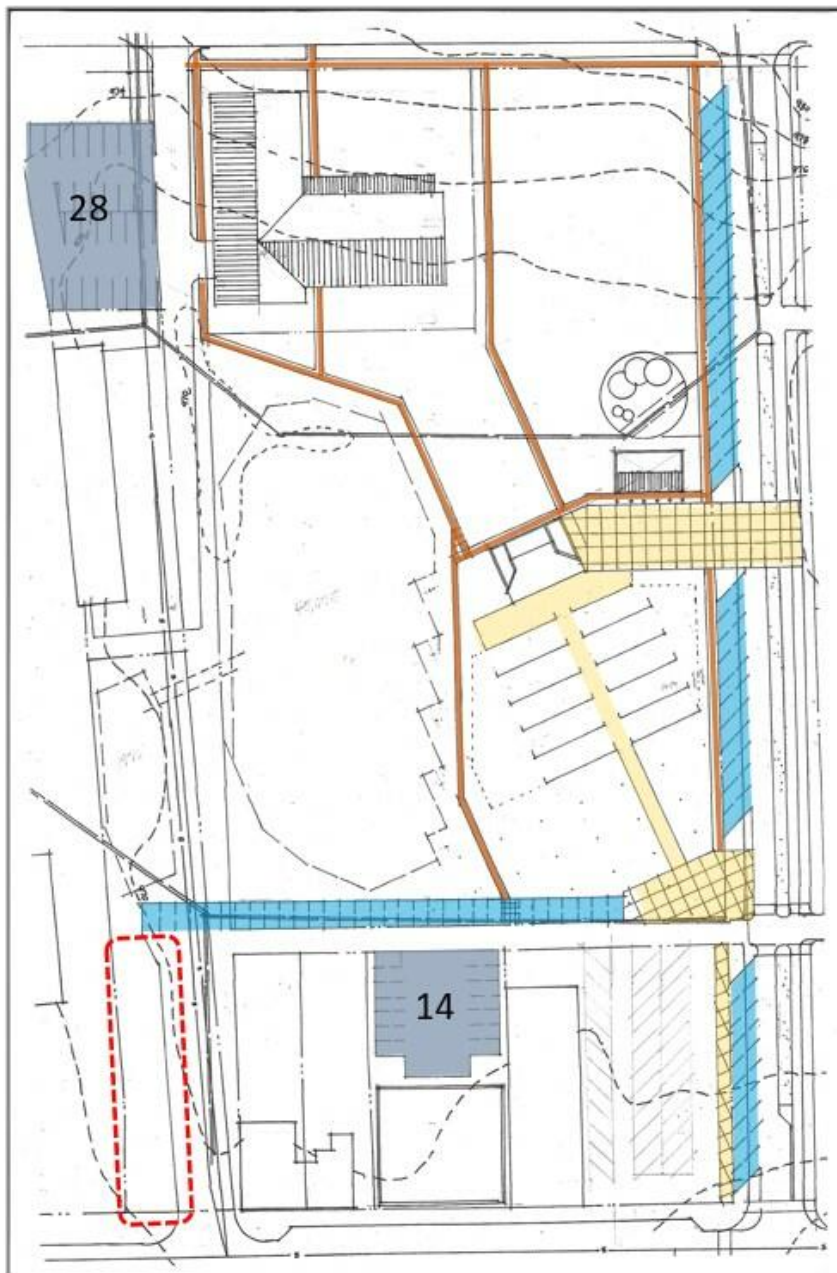
Playground

Multi-use plaza

"Skinny" street

Art/sculpture walk

Entry plaza



# Walks & Parking



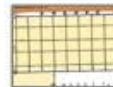
Sidewalk network



On-street diagonal parking = 60 spaces



Alley loaded = 34 spaces



Plaza parking = 8 spaces

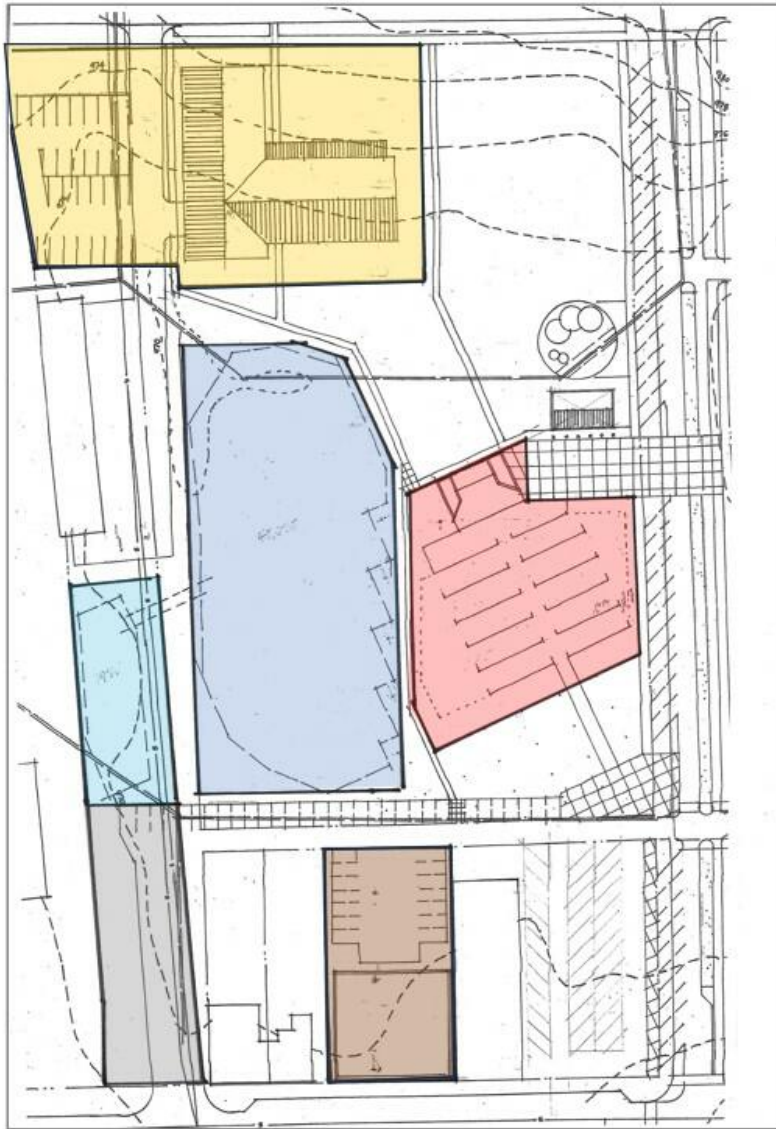


Private off-street = 42 spaces



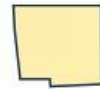
Overflow parking area (if needed)





## Site Quantities

City Block = ~ 4.4 acres



Residential = 1.2 ac



Stormwater area = 1.1 ac



Outdoor stage = .6 ac



Park/open space = 1.5 ac



Potential stormwater overflow = 10,725 SF



Potential overflow parking = 13,650 SF



Commercial/retail lot = 14,450 sf

# Performance Stage & Seating

Stage dimensions = 40' D x 50' W

Stage includes dressing and storage rooms (●)

Seating area = approx. 720 seats/1000+ with overflow



Tree grove/potential expansion area

# Outdoor Stage Comparisons



Rosemount: 116'



Eden Prairie: 109'



Buffalo: 125'



Strike Force Bowl, 309 Main St W, New Prague, P  
11 Jul 2024 15:47 UTC-5 **LIVE**

Solar data for the selected location

Dawn: 05:04:48  
Sunrise: 05:40:15  
Culmination: 13:19:58  
Sunset: 20:59:14  
Dusk: 21:34:35  
Daylight duration: 15h18m59s  
Distance [km]: 152,078,560  
Altitude: 52.22°  
Azimuth: 245.58°  
Shadow length [m]: 0.78  
at an object level [m]: 1

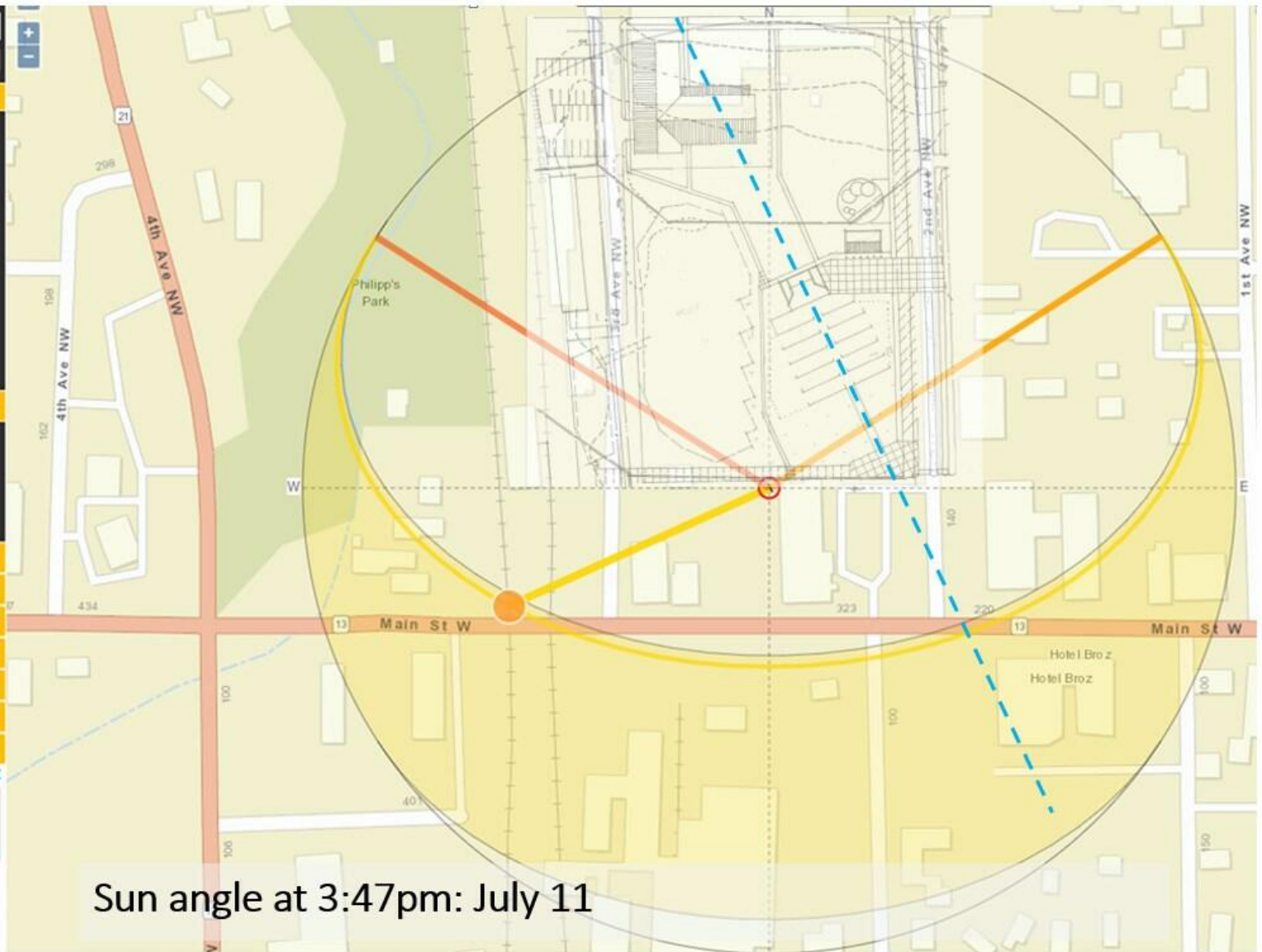
Geodata for the selected location

Height: 301m [Set Lat/Lon](#)  
Lat: N 44°32'38.69" 44.54408°  
Long: W 93°34'53.4" -93.58150°  
UTM: 15T 453807 4932470  
TZ: America/Chicago DST CDT

[More solar data & Photovoltaic](#)  
[Print](#)  
[Contact](#)  
[Help](#)  
[More for Moon|Planets|Satellites](#)  
[Donate](#)  
[Legal Disclosure|Privacy Policy|Cookies](#)

**CONTINUE →**

[How To Continue](#)



Sun angle at 3:47pm: July 11

Strike Force Bowl, 309 Main St W, New Prague, MN

11 Jul 2024 20:59 UTC-5 ▶ LIVE ↺

Solar data for the selected location

Dawn: 05:04:48  
Sunrise: 05:40:15  
Culmination: 13:19:58  
Sunset: 20:59:14  
Dusk: 21:34:35  
Daylight duration: 15h18m59s  
Distance [km]: 152,077,464  
Altitude: -0.27°  
Azimuth: 302.62°  
Shadow length [m]: n/a  
at an object level [m]: 1

Geodata for the selected location

Height: 301m [Set Lat/Lon](#)  
Lat: N 44°32'38.69" 44.54408°  
Lng: W 93°34'53.4" -93.58150°  
UTM: 15T 453807 4932470  
TZ: America/Chicago DST CDT

[More solar data & Photovoltaic](#)

[Print](#)

[Contact](#)

[Help](#)

[More for Moon|Planets|Satellites](#)

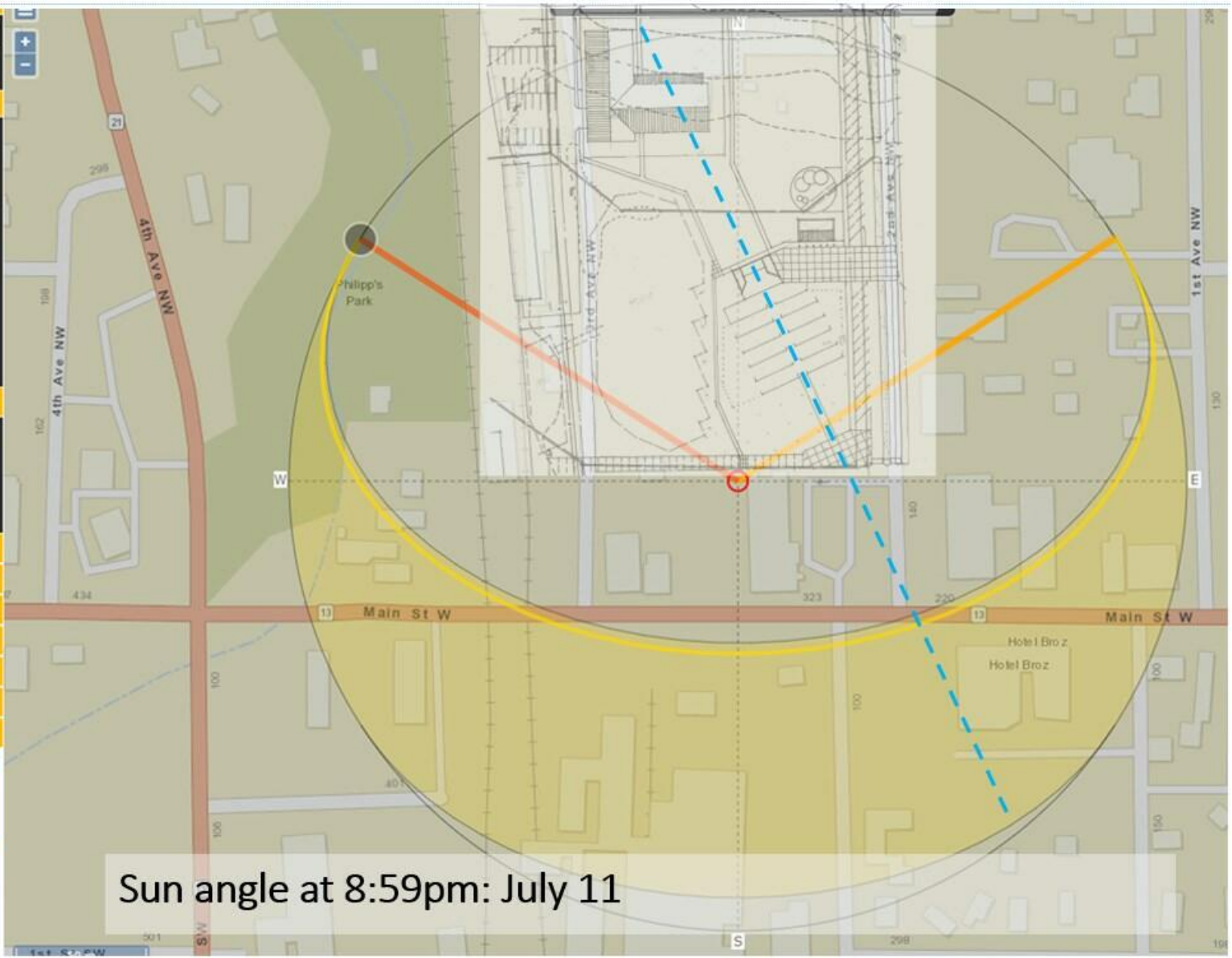
[Donate](#)

[Legal Disclosure|Privacy Policy|Cookies](#)

CONTINUE →

How To Continue

How To Continue and



Sun angle at 8:59pm: July 11

# Potential Phase 1



Stormwater treatment area



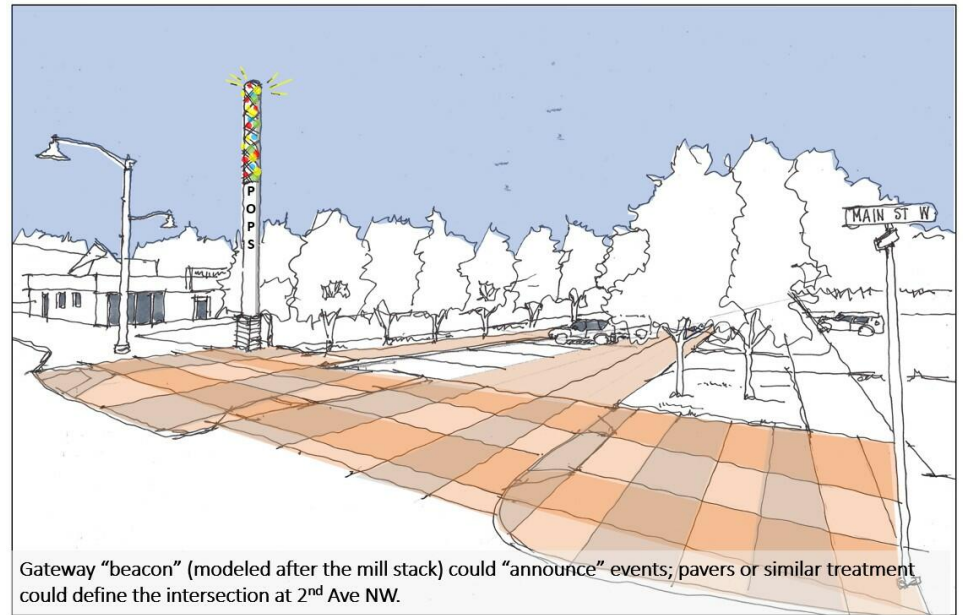
Outdoor performance stage



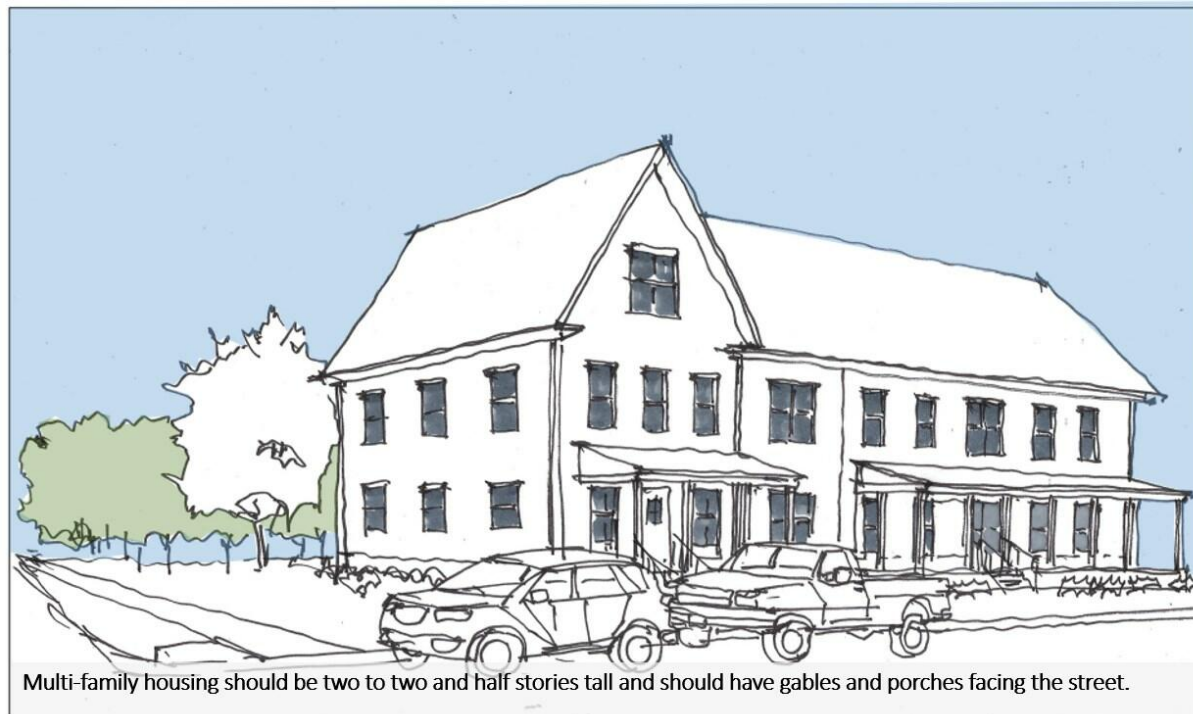




Praha "Porch" could be a feature of the community building and provide before and after activities related to outdoor events



Gateway "beacon" (modeled after the mill stack) could "announce" events; pavers or similar treatment could define the intersection at 2<sup>nd</sup> Ave NW.



Multi-family housing should be two to two and half stories tall and should have gables and porches facing the street.