

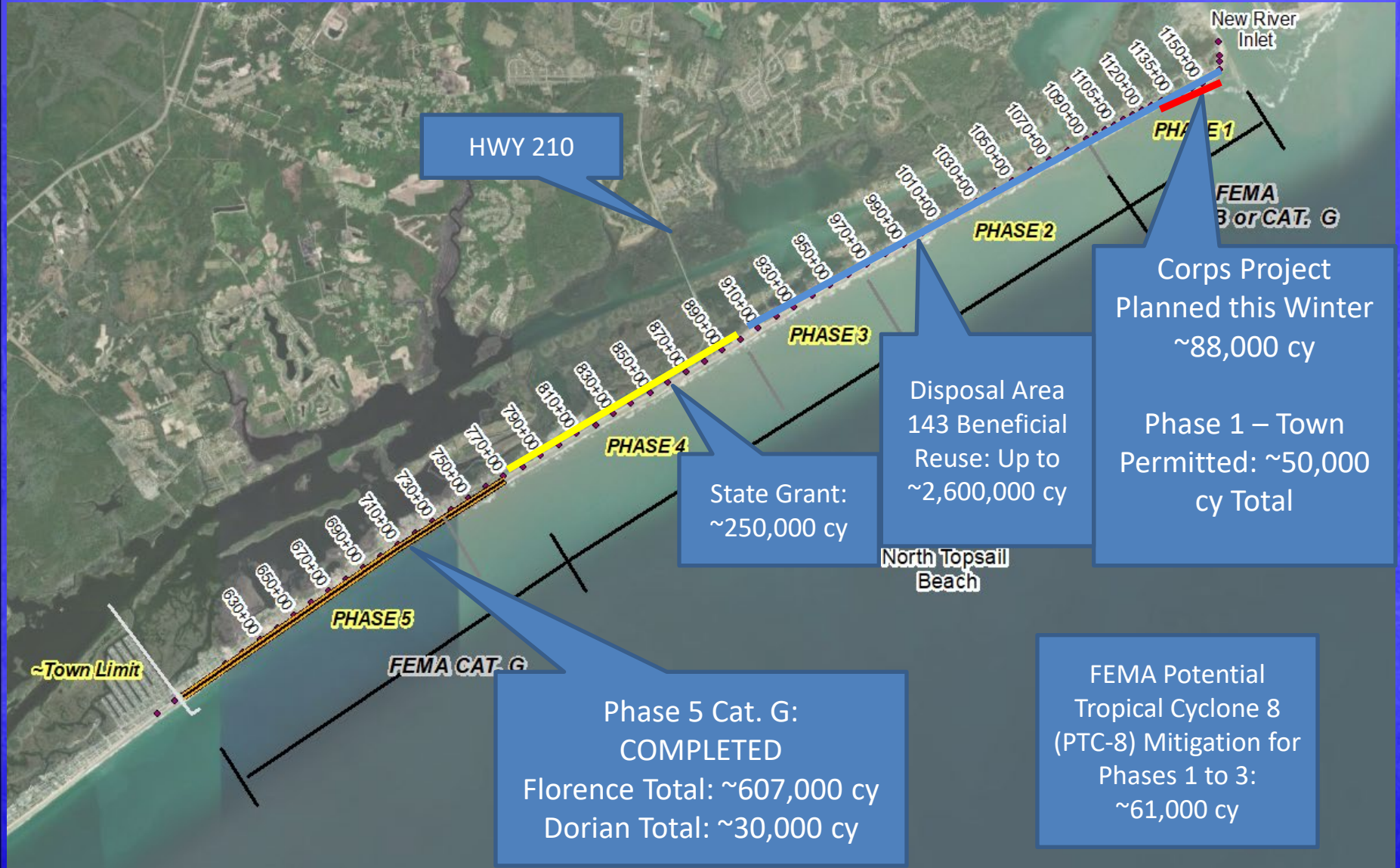
North Topsail Beach Coastal Update January 2025



Marina, Coastal, Environmental
& Water Resources Engineers

Recent and Upcoming Projects Overview

State Grant, Beneficial Reuse, FEMA, Corps Projects



USACE Navigation Dredging and Placement This Winter Corps Project Awarded to Southwinds:

Slated to Begin in early February (Southwinds is now working on Core Creek north of Morehead in January)

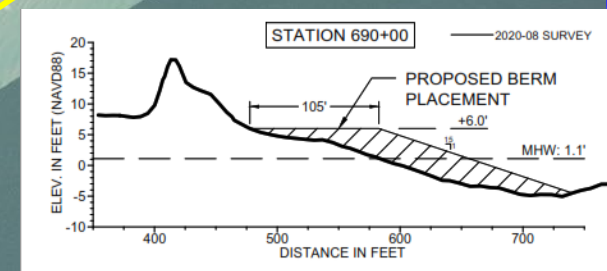
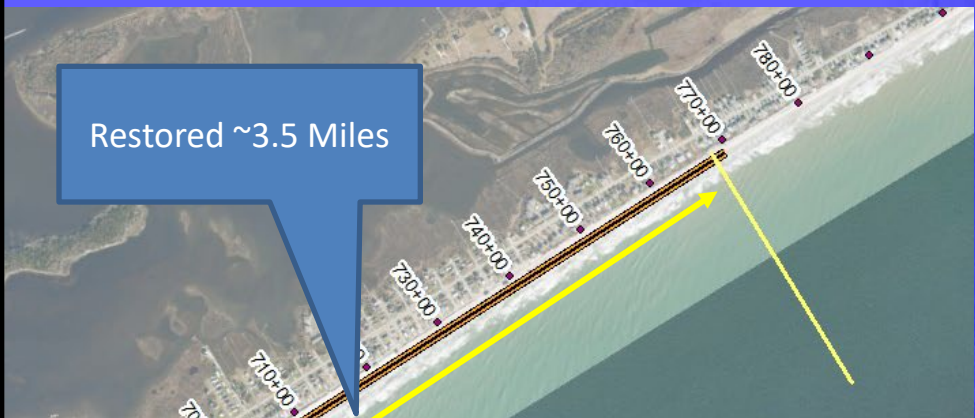
Dredging

Fill Placement in
Phase 1

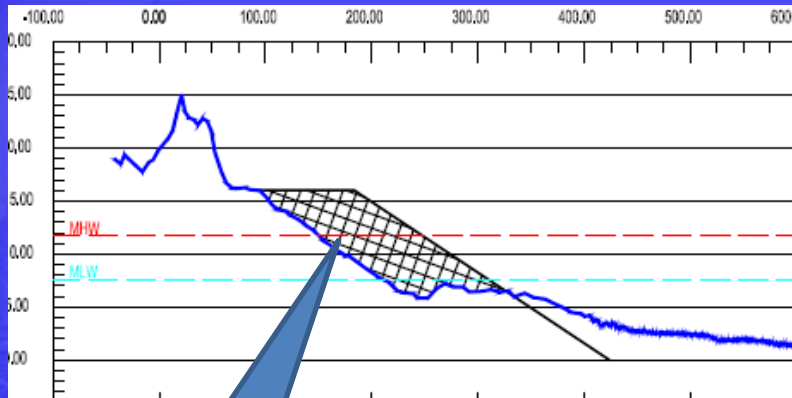


Estimated Yardage in Corps Bid Package: 88,000 cy
Begins at 2334 New River Inlet Road and Works South

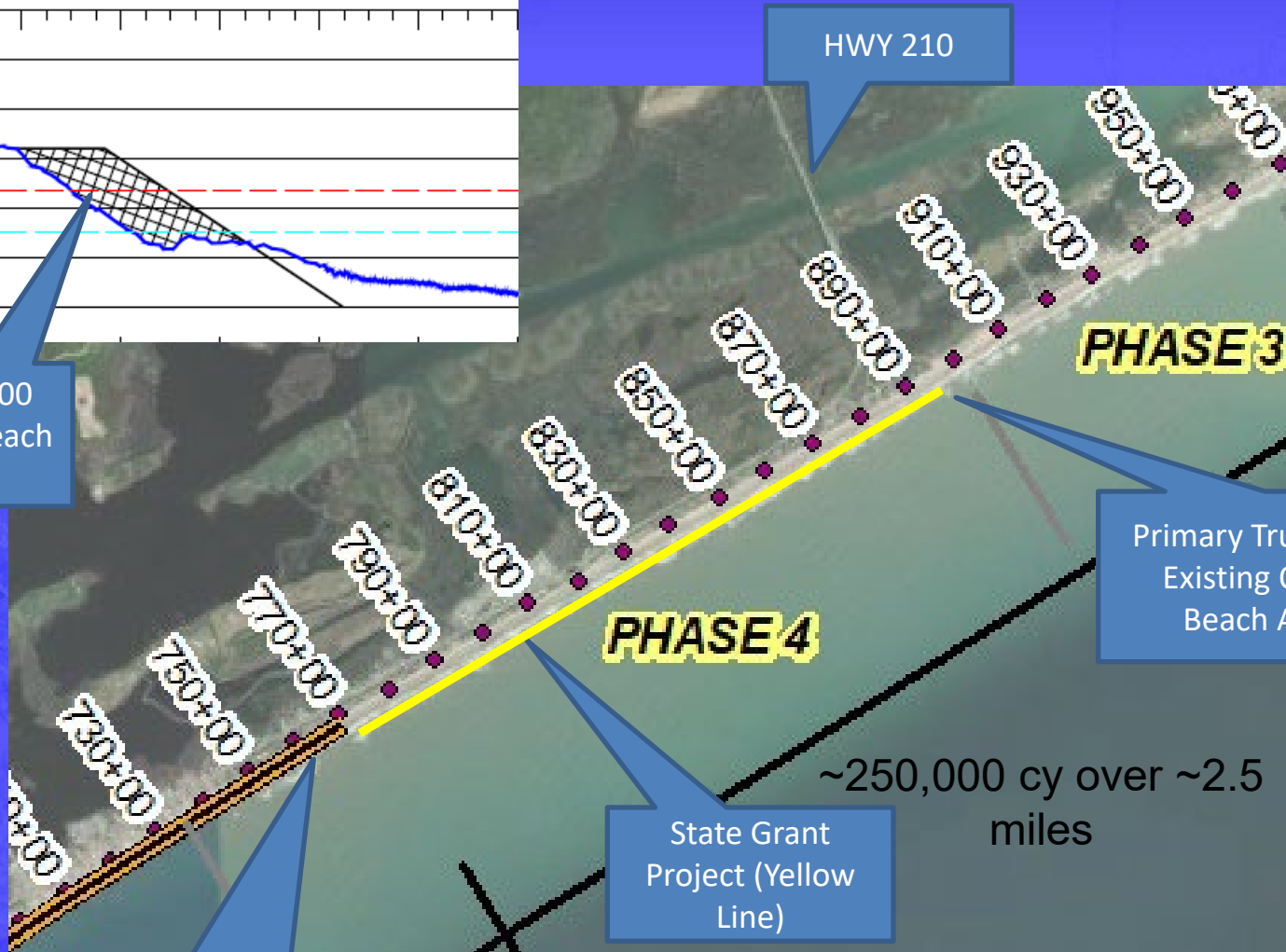
COMPLETED FEMA Mitigation Nourishment in Phase 5 (and some Phase 4) Beach (not Dune) Nourishment. ~3.5 Miles of Restored Beach



Successful State Grant in Phase 4. Beach (and some Dune) Nourishment



~80 to 100 Feet of Beach Width



HWY 210

PHASE 3

PHASE 4

Primary Truck Access at Existing Opening at Beach Access 33

~250,000 cy over ~2.5 miles

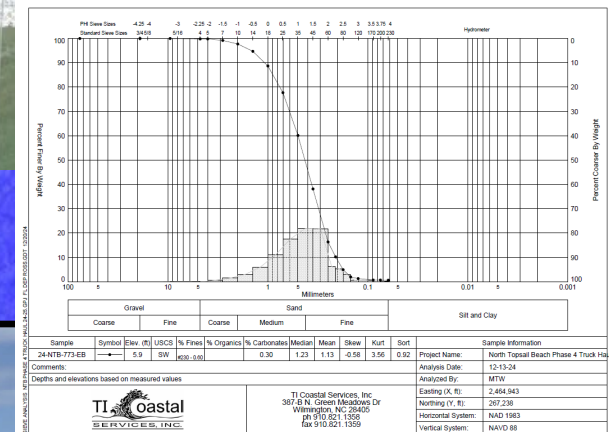
State Grant Project (Yellow Line)

Secondary Truck Access at Existing Opening at 2nd Avenue

Phase 4 Nourishment



~12,175 cy Placed In December



Disposal Area (DA) 143 Beneficial Reuse and Placement in Phases 1, 2, and 3

- Investigations Ongoing,
- Permit Application to Follow.
- 2024 Analysis shows up to 2.6 million cubic yards at DA 143 (1.9 million cubic yards was previous estimate)



Potential Tropical Cyclone (PTC) 8

DECLARED OCTOBER 19, 2024

SUMMARY

STATE: North Carolina
NUMBER: FEMA-4837-DR
INCIDENT: Potential Tropical Cyclone Eight
INCIDENT PERIOD: September 16-20, 2024
DATE REQUESTED BY GOVERNOR: October 16, 2024
FEDERAL COORDINATING OFFICER: E. Craig Levy, Sr.
National FCO Program

DESIGNATIONS AND TYPES OF ASSISTANCE:

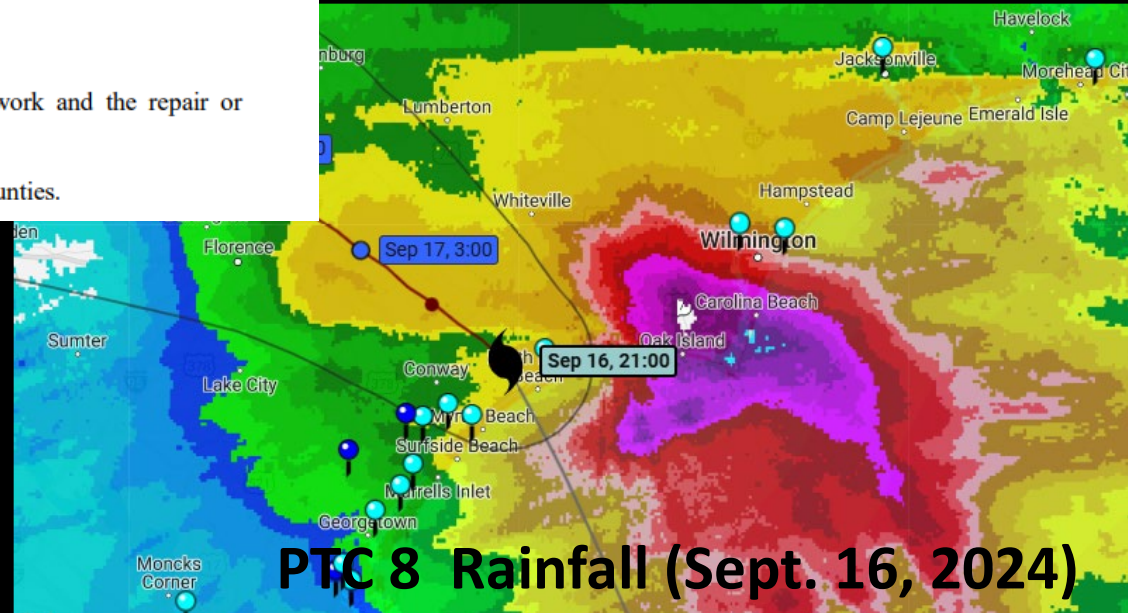
INDIVIDUAL ASSISTANCE (Assistance to individuals and households):

Not Requested.

PUBLIC ASSISTANCE (Assistance for emergency work and the repair or replacement of disaster-damaged facilities):

Brunswick, Carteret, New Hanover, and Onslow Counties.

- Phase 5
“Engineered Beach” Shoreline
– Gained Volume
- Dune losses
measured for
entire shoreline



PTC 8 Rainfall (Sept. 16, 2024)

Potential Tropical Cyclone (PTC) 8

Dune Losses

	Shoreline Length (miles)	Net loss (CY)	Gross Loss (CY)
PHASE 1	1.5	14,641	15,629
PHASE 2	2.3	22,068	33,710
PHASE 3	1.3	7,414	7,697
PHASE 4	3.2	16,956	26,274
PHASE 5	3.1	-28,680	4,502
TOTALS		32,400	87,812

Net Losses = ~61,000 cy when not including Phase 5

Dune Losses



Town Beach Projects Updates

- Phase 1 – Corps AIWW Project this winter (~88,000 cy estimated, Southwinds Dredging). Southwinds now estimates beginning in early February.
- New River Inlet Management Master Plan EIS: Final Sections of Draft EIS under development.
- State Grant Nourishment - ~250,000 cy in Phase 4 has begun
- Post Tropical Storm Survey submitted to FEMA/NCEM for PTC 8. 61,000 cy to 88,000 cy potentially eligible. Focus on Phases 1,2 and 3.
- Disposal Area 143 Beneficial Reuse for Nourishment of Phases 1,2,3 of between ~1.9 and ~2.6 million cubic yards - investigations ongoing , then permitting
- Working with NTB Finance Officer and DEC Associates regarding funding for FEMA and State funded projects
- Grant Coordination
- Permitting Coordination (all projects)

