

**ONSLOW WATER AND SEWER AUTHORITY
TOPSAIL ISLAND BOOSTER PUMPING STATION
JANUARY 4, 2023**

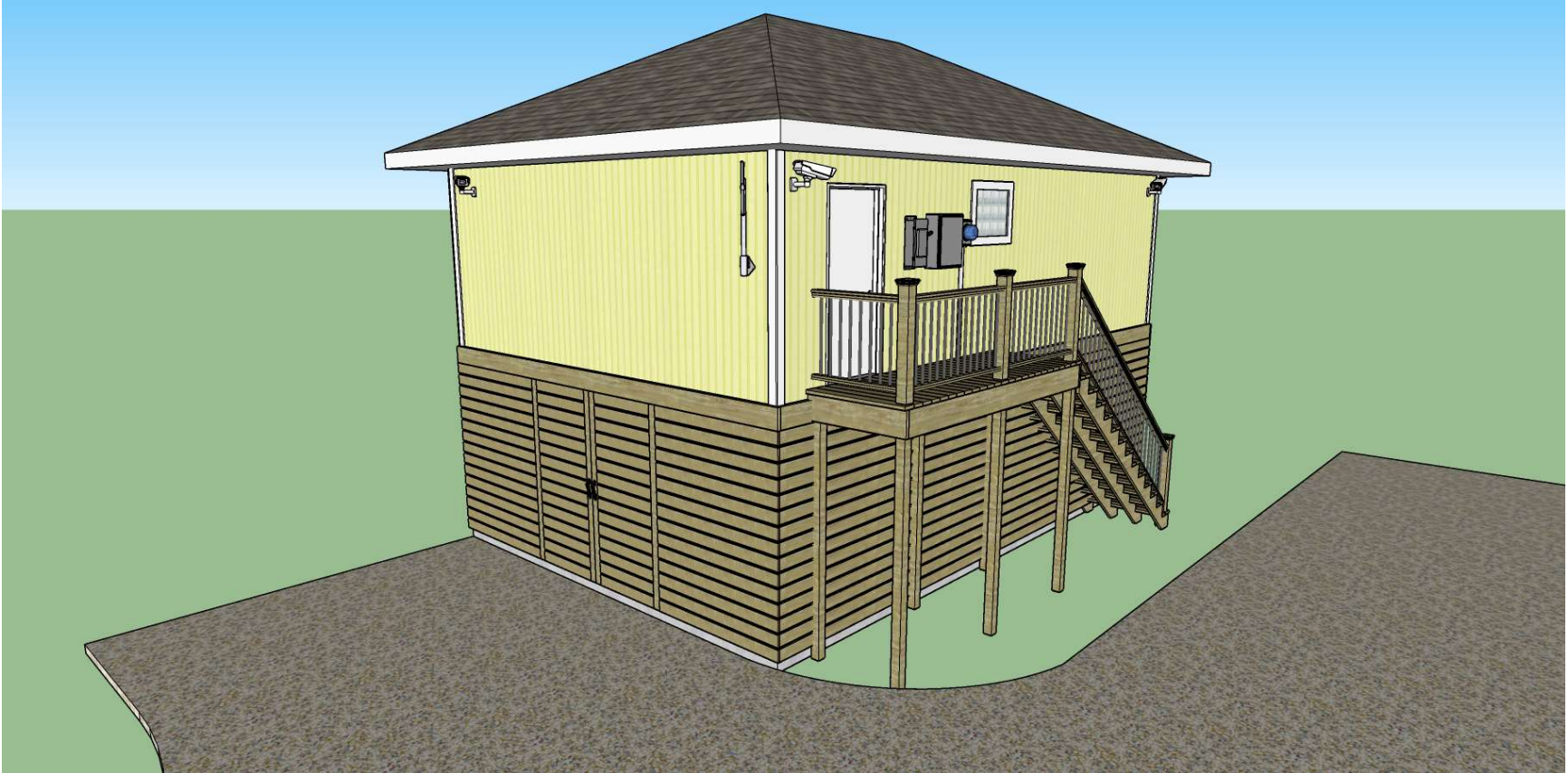


Figure 1 – Proposed building configuration. Construction is a reinforced concrete main floor supported by steel pilings to an elevation above the 100 year-flood (approximately 8 feet above existing grade). Remainder of the building is conventional stick frame construction, with materials selected for weather resistance and reduced maintenance. Color scheme will be selected to complement the adjacent Town Hall structure.

**ONslow WATER AND SEWER AUTHORITY
TOPSAIL ISLAND BOOSTER PUMPING STATION
JANUARY 4, 2023**

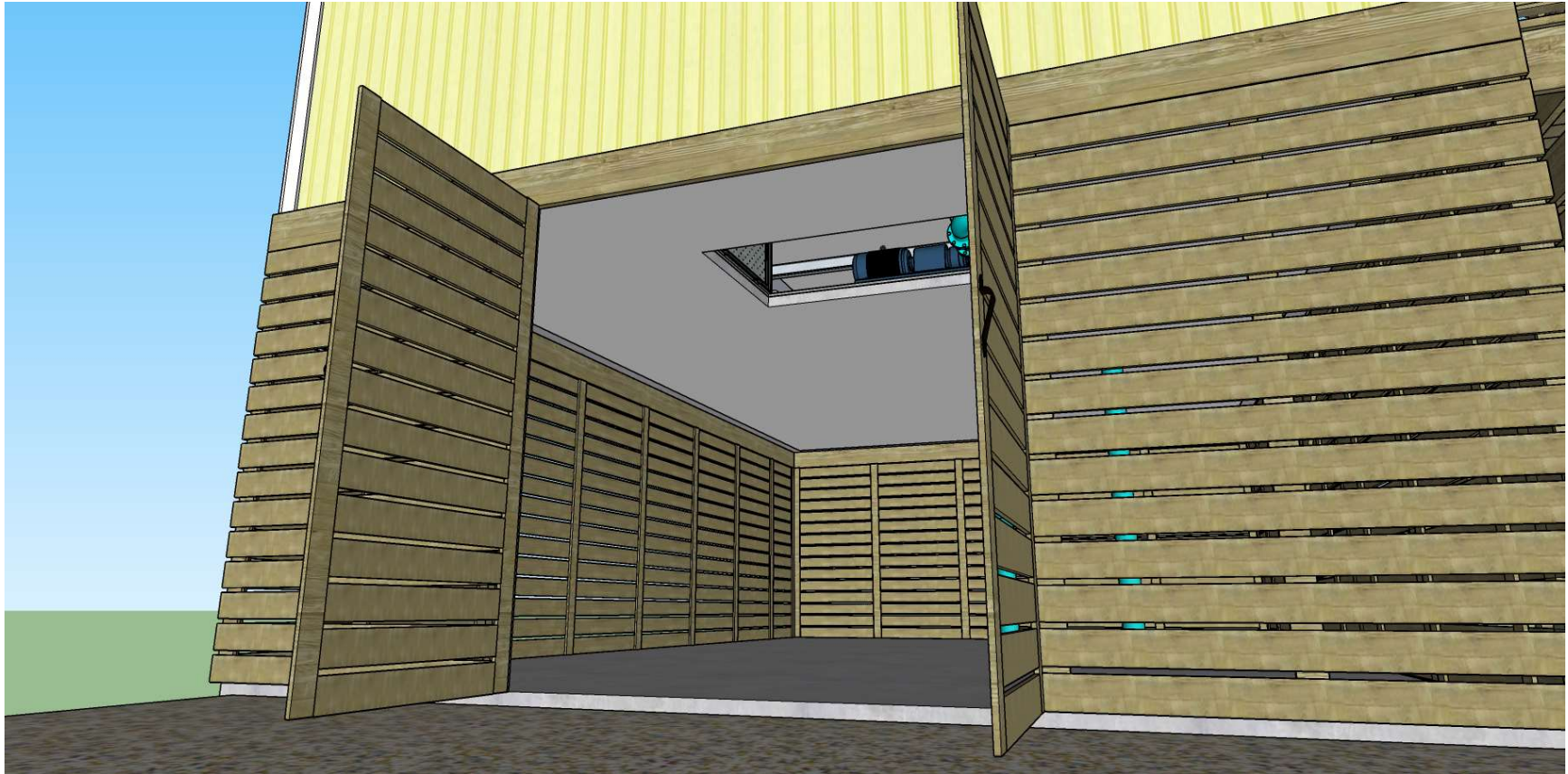


Figure 2 – Proposed lower-level storage area with gravel floor, to be made available to the Town of North Topsail Beach as needed. The access opening in the ceiling will normally be sealed by a hatch and only used in the event a pump or motor assembly must be removed from the building for service.

**ONSLOW WATER AND SEWER AUTHORITY
TOPSAIL ISLAND BOOSTER PUMPING STATION
JANUARY 4, 2023**

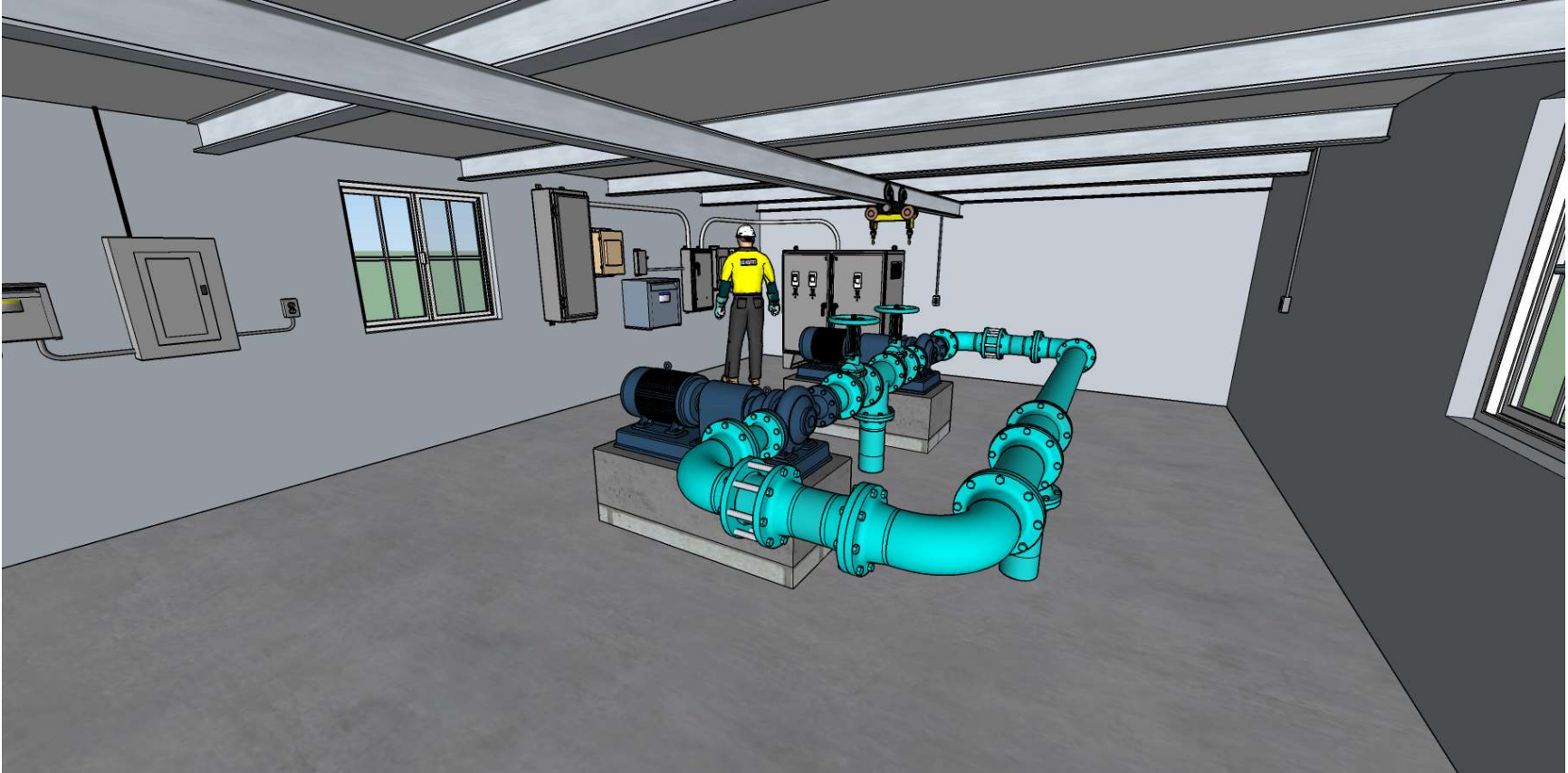


Figure 3 – Rendering of the building interior with dual booster pumps, control equipment, and overhead crane rail to facilitate motor or pump removal. Please note the sliding windows shown will be replaced with glass block windows to improve protection from weather events and vandalism. The equipment will be linked to ONWASA’s 24-hour System Control Center via telemetry that will allow for remote monitoring and operation.